

REGISTRATION

On-Line Registration—Two-step procedure

1. Annual USFS Registration; only once/year

Fiscal year is July 1 through June 30.

<http://www.learntoskateusa.com>

- **A. New Skaters:** click on “Sign in”
- Answer questions. Learn to Skate USA will issue your skater a **lifetime number**. **Keep this number handy and safely stored.**
- **B. Skaters with USFS numbers :** click “Log on”. Your name address comes up automatically.
- **Once registered for 2017-2018 you need not register again** with learntoskate.usa until September 2018.

2) Register for classes: [www.swfsc.com/Skate USA](http://www.swfsc.com/SkateUSA) .

- Parents use **your skater’s name** and **your skater’s USFS** identification number.
- Select your class
- Pay the “**Early Bird**” class fee on line **OR** by check the first day of class..
- **Late Fees:** A \$15.00 late fee will be automatically applied for registrations received after the session deadline date, including “walk-on” the first day of class. No student will be allowed on the ice without payment
- **Skates free with the registration. See inside panel for skate information, session fees, progression levels.**

JUMPSTART YOUR SKATING

Beginner— Advanced Tots—Adults

Figure, Hockey, Speed Skating

1/2 –3/4 hour group lesson plus 1/2 to 3/4 hour of free instructor supervised practice ice

Southern Wisconsin Skating School

- ◆ Year-round group/ private instruction from a qualified, sincere and fun loving staff
- ◆ SWSS allows skaters to progress **at their own rate** throughout the session
- Endorsed by US Figure Skating; US Hockey and US Speed Skating
- **Mission of SWSS is to:**
- teach and inspire individuals of all ages, abilities and interests
- teach strong fundamentals in a fun environment
- encourage the development of a lifelong enjoyable year-round sport activity
- enable interested skates to become a competitive figure, hockey or speed skater.



Southern Wisconsin Skating School

McFarland Community Ice Center

4812 Marsh Rd., McFarland, WI 53558



FUN –TASTIC

Saturday classes 11:30 AM—12:45 PM
1/2 –3/4 hour group lesson plus 1/2 to 3/4 hour of free instructor supervised practice ice

2017-2018 Sessions - Schedule

I Fall September 23—October 28

Free Open House [Sunday Oct 29th](#)
[1:00-3:00 PM Games-Prizes, Free Instruction](#)

II. Winter I November 4—December 23

[Holiday Show: December 16 –6:30-7:30 PM](#)

III. Winter II January 6-February 24

Annual Basic Skills Competition –March 3,2018

IV. Spring March 17—May 19

[Spring Club Show: May 5 -6:00-7:00 PM](#)

V. Summer Session June 11, - August 13, 2018

Contact: Alice : wentworth_alice@rocketmail.com

608-445-1935

2017-2018 Early Bird Fees:

Session 1 Fall 5 weeks \$75.00

September 23—October 28, 2017

Session 2 Winter I 7-weeks \$105.00

November 4—December 23, 2017

Session 3: Winter II 8 weeks \$120.00

January 6—February 28, 2018

Session 4: Spring 8 weeks \$120.00

March 17—May 19, 2018

Session 5: Summer 10 weeks \$120.00

Ten classes for the price of 8

June 11 through August 13, 2018

Sibling Discount: 5.00 discount for each additional family member** Use Coupon code for sibling discount : **Sib18**

Parents/ skate on practice ice free—Must sign waiver. Friends may skate on practice ice .

\$5.00/walk on Must sign waiver and pay cash at the registration desk.

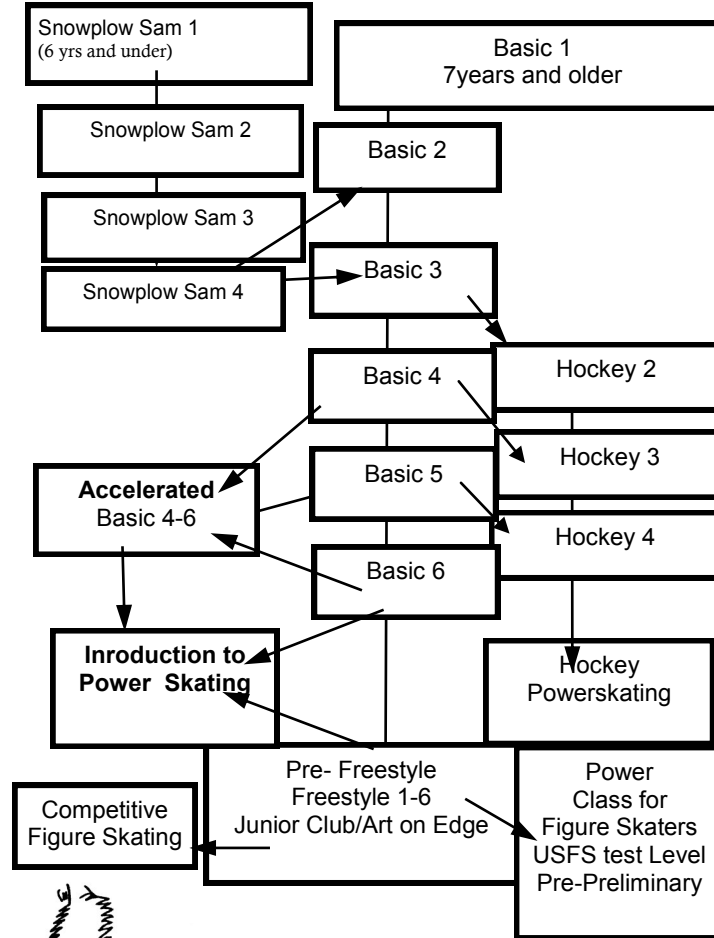
Registration must be completed on line two days prior to the start of each session.

Late Fees:

- A \$15.00 fee will be automatically applied for registrations received after the session deadline date and for on site registrations the day that classes begin.
- No student will be allowed on the ice without payment. You must register for your class on line before the deadline date to avoid a late registration fee. You may pay on line when you register or by check the first day of class; but you Need help—wentworth_@rocketmail.com

Progression Levels - detailed class information at www.learnatoskateusa.com

Skaters must have passed their current level before proceeding to the next level.



Class Procedure—Equipment

- Recommend helmets for beginners and tots
- Loose fitting warm clothing—mittens
- Arrive 15 minutes before class -
- Check in at the registration desk
- Use the assigned locker rooms - usually #1
- Your teacher will take you from the locker rooms to your class area the first day.

Skaters make the best progress with proper skates!

Basic 4 and above are recommended to have their own skates. Quality used skates for purchase :

SWFSC contact: sue_cook@charter.net

New “rink rental” skates now available for your class use. First come first serve each class. **Dry and return to cabinet at the end of your class.**

- ♦ “Junior Club” “bridge” program—accelerate your progress.
- ♦ Eligible skaters: Basic 4 –Freeskate 6
- ♦ Monday’s or Thursdays: 5:15-6:15 pm or 6:30-7:30 PM on the Club’s Contract ice.
- ♦ Receive 1/2 hour semi-private lesson, then use the other 1/2 hour for practice.
- ♦ Enrollment is limited
- ♦ 6 hours full ice sheet skating with 1/2 hour semi-private lesson.

Session 1: 9/18/2017-10/25/2017 = \$120.00

Session 2: 11/6/2017-12/10/2017 = \$120.00

Session 3: 1/22/2018 –2/26/2018 = \$120.00

Session 4: 3/12/18— 4/23/2018 = \$120.00

See Junior Club Flyer for details.

Southern Wisconsin Skating School



Contact: Alice – email: wentworth_alice@rocketmail.com
Or 608-445-1935