



2017 QUEEN of the BAY



WESTHAMPTON YACHT SQUADRON Remsenburg, NY 11960

Sunday, September 3, 2017

SAILING INSTRUCTIONS

(revised September 01, 2017)

1. **RULES** - The race will be governed by *The Racing Rules of Sailing for 2017-2020 including US Sailing Prescriptions (RRS)*, except as changed by these Sailing Instructions.
2. **ELIGIBILITY** - The Westhampton Yacht Squadron (WYS) Queen of the Bay Race is open to any class of sailboat skippered by a member, or family of a member, of WYS. Boats and crews must register prior to the race. Boats will be handicapped at the start as noted later in these Sailing Instructions. Boats entered but not listed in these Sailing Instructions will receive a handicap start time at the skippers' meeting.
3. **NOTICES TO COMPETITORS** - Notices to competitors will be posted on the official WYS notice board located north of the flagpole.
4. **CHANGES TO SAILING INSTRUCTIONS** - Changes to the Sailing Instructions will be posted by noon on the day it will take effect. Oral instructions may be given on the water, as necessary, with a loud hailer from the Race Committee boat or by an official support boat. RRS 90.2(c) refers.
5. **SIGNALS MADE ASHORE** - Signals made ashore will be displayed on the WYS flagpole.
 - **Code Flag L** with one horn blast:
 - Ashore: A notice to competitors has been posted.
 - Afloat: Come within hail or follow this boat.
 - **Code flag AP** (red and white stripes) with two horn blasts means the race is postponed. A single horn blast accompanies the lowering of the flag.
6. **SAFETY** - Competitors ages 18 and under and all competitors racing single-handedly **must** wear a U.S. Coast Guard approved Type III or Type V Personal Flotation Device (PFD) at all times on the water. **All** competitors **must** wear an approved PFD at all times on the water when the Y Flag (yellow and orange diagonal stripes) is flown on the Race Committee Boat.
7. **SCHEDULE OF RACES** - Racers must check in with the Race Committee boat on the water prior to the race. If leaving the race area, communicate that information to the Race Committee as soon as possible. The start times will be staggered based on handicaps for each class of boat entered.

Registration	1100
Skippers' Meeting	1200
1 st Start	1300

8. **RACING AREA and COURSE** - Races will be held on Moriches Bay, and the start and finish line will be in front of the Westhampton Yacht Squadron. The Course Diagram is attached to these SIs and will also be available at the skippers' meeting. The race will cover a total distance of approximately 10 miles.
9. **MARKS** - Marks will be orange inflatable pyramids, government channel buoys and private channel buoys. The start-finish line will be between an orange flag on the Race Committee boat and the small orange ball in the water (the pin).
10. **HANDICAPS and START TIMES** – The start of the first class will be the 3-minute sequence as per modified Rule 26. The start of subsequent classes will be based on handicap minutes after the first start and will be indicated by a horn and the class flag. Times shall be taken from the visual signals; the failure of a sound signal shall be disregarded. A siren will be sounded approximately one minute before the warning signal but is not part of the 3-minute sequence.

Handicap Minutes and Start Times will be communicated at the skippers' meeting. Estimated starting sequence below is for illustrative purposes.

<u>Class</u>	<u>Class Flag</u>
Optimist	Blue Opti insignia on a white field
SS	Black SS insignia on a red field
Sunfish	Red Sunfish insignia on a white field
JY15	Blue Flag
Flying Scot	Blue FS insignia on a white field
Laser	Yellow Flag
420	Green Flag
Multi-hull	Red Flag

11. **RECALLS**

- **Code flag X** (blue cross on a white field) and 1 horn blast signals an individual recall. As a courtesy, the Race Committee will attempt to hail the sail numbers for boats that are OCS (on the course side). This modifies RRS 41. Boats shall not be entitled to redress for the following: the failure of a boat to hear or receive a recall hail; the order of recall numbers hailed; the promptness of the hail. This modifies RRS 62.1(a).
- **Code flag First Substitute** (blue pennant with yellow triangle) and 2 horn blasts signals a general recall. A single horn blast accompanies the lowering of the flag. The warning signal will be made one minute after removal.

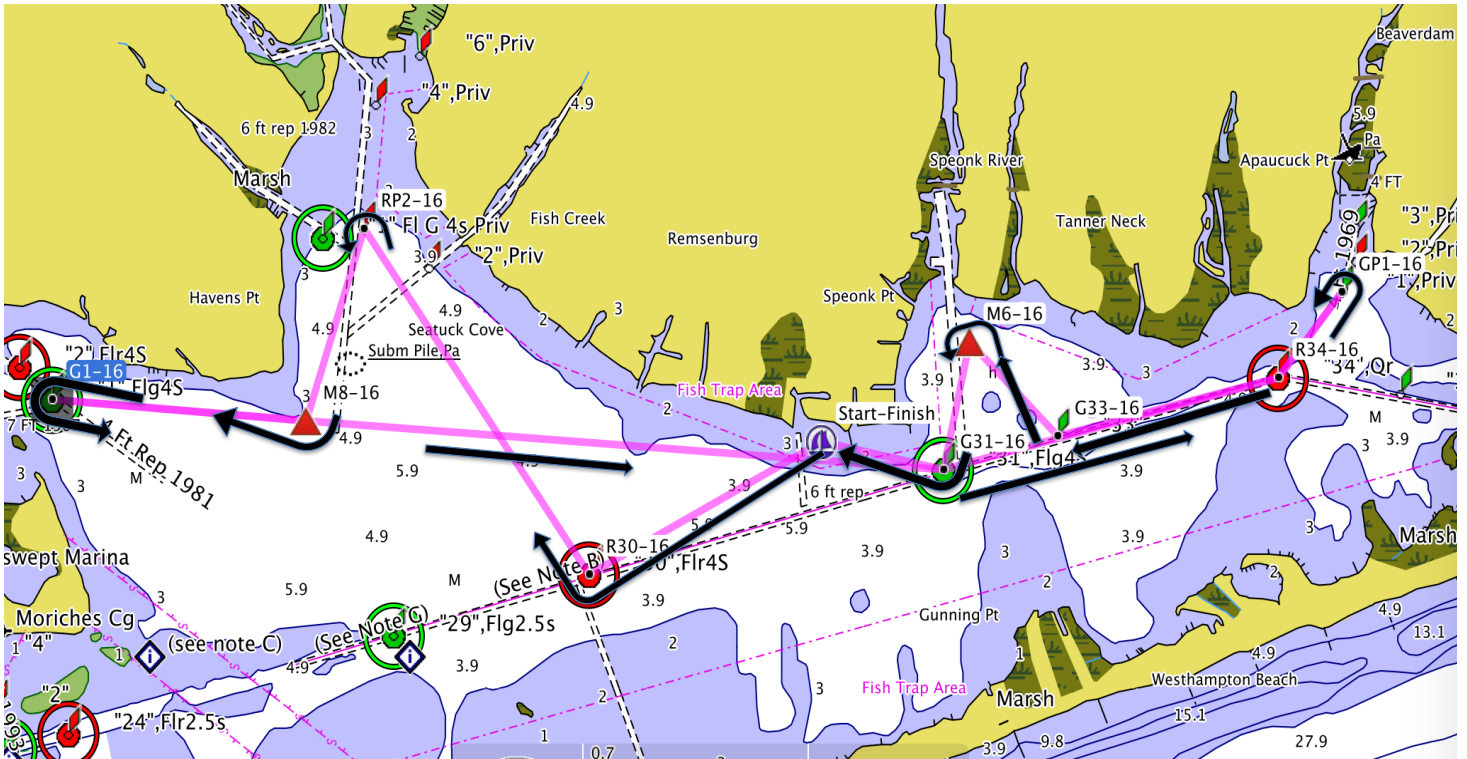
12. **ABANDONING AFTER THE START –**

- **Code flag N** (blue and white checks) and 3 horn blasts signal abandon race; return to start area. A single horn blast accompanies the lowering of the flag. The warning signal will be made one minute after removal.
- **Code flag AP over Code flag H** (red and white stripes over white and red vertical stripe) and 3 horn blasts signal abandon race, return to shore.

13. **RETIREMENT** - A boat that retires from a race shall notify the Race Committee as soon as possible.

14. **TIME LIMIT** - Boats failing to finish within 45 minutes after the first boat finishes will be scored DNF (did not finish). This changes RRS 35 and A4.
15. **PROTESTS** - The Race Committee will post the docking time at the end of racing each day on the official notice board. Protest forms are available at the club and completed protest forms shall be delivered to the Protest Committee no later than one hour after the docking. The same time applies to protests by the Race Committee about incidents they observe in the racing area and to requests for redress. This changes Rules 61.3 and 62.2. Protests will be heard in approximately the order of receipt as soon as possible.
16. **SCORING** - The first boat to cross the finish line will be the winner, and the remaining boats will be scored in the order of finish.
17. **DISCLAIMER OF LIABILITY** - Competitors in this Summer Series are participating entirely at their own risk and are bound by *The Racing Rules of Sailing for 2017-2020 including US Sailing Prescriptions* and all other rules that govern this event, and assume full responsibility for starting or continuing to race (Rule 4, Decision to Race). The organizing authority, host club and/or personnel conducting this event will not accept any liability for material damages or personal injury or death sustained in conjunction with or prior to, during, or after the event.

Westhampton Yacht Squadron
Queen of the Bay Race
 Sunday, September 03, 2017
 Skipper's Meeting: 1200 Warning Signal: 1300
 Low Tide at Moriches Coast Guard Station: 1322



Leg	From	To	Mark Desc.	Location	Course (°mag)	Mark Rounding	Distance (miles)	Cum Distance (miles)
1	SF	R30	Red "30"	Channel West	254°	Stbd	0.8	0.8
2	R30	RP2	Red Private "2"	Seatuck Cove	341°	Port	1.3	2.1
3	RP2	M8	Orange Tetrahedron	Havens Point	211°	Stbd	0.7	2.8
4	M8	G1	Green "1"	Hart's Cove	289°	Port	0.8	3.6
5	G1	M8	Orange Tetrahedron	Havens Point	109°	Port	0.8	4.4
6	M8	G31	Green "31"	Channel East	108°	Port	2.0	6.4
7	G31	R34	Red "34"	Channel East	88°	Port	1.1	7.5
8	R34	GP1	Green Private "1"	Beaver Dam Creek	50°	Port	0.3	7.8
9	GP1	R34	Red "34"	Channel East	230°	Stbd	0.3	8.1
10	R34	G33	Green "33"	Channel East	269°	Stbd	0.7	8.8
11	G33	M6	Orange Tetrahedron	Speonk River	331°	Port	0.4	9.2
12	M6	G31	Green "31"	Channel East	205°	Stbd	0.4	9.6
13	G31	SF	Finish	WYS	297°	Finish	0.4	10.0