



2019 QUEEN of the BAY RACE

WESTHAMPTON YACHT SQUADRON
Remsenburg, NY 11960



September 1, 2019

NOTICE OF RACE

(Revised August 21 2019)

1. RULES

- 1.1 The races will be governed by “The Racing Rules of Sailing for 2017-2020, including US Sailing Prescriptions” (“RRS”), except as changed by this Notice of Race or the Sailing Instructions.

2. ELIGIBILITY AND ENTRY

- 2.1 The Westhampton Yacht Squadron (WYS) Queen of the Bay Race is open to any class of sailboat skippered by a member, or family of a member, of WYS. Boats and crews must register prior to the race. Boats will be handicapped at the start as noted later in the Sailing Instructions. Boats entered but not listed in the Sailing Instructions will receive a handicap start time at the skippers’ meeting.
- 2.2 . Registration will be held on September 1, 2019 at 11:00 a.m. in the Andon Graham Sailing Center. Competitors are to sail in boats in which they are registered. Any changes made to the registered entry must be approved by the WYS Race Committee before racing and can only be made by the end of the skipper’s meeting.

3. USE OF CLUB BOATS

- 3.1 There are a number of WYS owned boats "club boats" available for use for the Queen of the Bay race, which use is subject to the Club Boat Use Policy. In order to use a 420 or JY, a reservation must be made with the Club Manager by calling (631) 325-8321 or sending an email via the "Contact Us" tab on the WYS website. Flying Scot reservations can be made by contacting Dave Kisla at davekisla@gmail.com. Sunfish reservations can be made by contacting Suzanne Hulme at skhulme@optonline.net.
- 3.2 Reservations must be made by 4pm on Friday, August 30, 2019..

4. SAFETY

- 4.1 All competitors racing must wear a U.S. Coast Guard approved Type III or Type V Personal Flotation Device (PFD) at all times on the water. All competitors must wear

an approved PFD at all times on the water when the Y Flag (yellow and orange diagonal stripes) is flown on the Race Committee Boat.

5. SAILING INSTRUCTIONS

- 5.1 Sailing Instructions will be available on the WYS Website and at registration. Changes to the Sailing Instructions will be posted on the official WYS Notice Board located just north of the flagpole by noon on the day it will take effect. Oral instructions may be given on the water, as necessary, with a loud hailer from the Race Committee boat or by an official support boat, as permitted by RRS 90.2(c).

6. RACING AREA

- 6.1 The racing area is on Moriches Bay with the start and finish lines in front of the WYS Club House.

7. THE COURSE

- 7.1 The course diagram will be available at the skippers meeting and will be approximately 10 miles in length.

8. SCHEDULE OF RACES

- 8.1 The racing day will consist of one race, with the start time for each class being staggered based on handicaps as published on the GSBYRA website (<http://www.gsbyra.org/forms/Portsmouth%20Numbers.html>) as of the day of the race.
- 8.2 Racers must check in with the Race Committee boat on the water prior to the race. If leaving the race area, a racer should communicate that information to the Race Committee as soon as possible.
- 8.3 A Skipper's meeting will be held at 1200 on the race day with the warning signal for the race at 1300.

9. SCORING

- 9.1 The first boat to cross the finish line will be the winner, and the remaining boats will be scored in order of finish.

10. DISCLAIMER OF LIABILITY

- 10.1 Competitors in this Summer Series are participating entirely at their own risk. See Rule 4, Decision to Race. The organizing authority, host club and/or personnel conducting

this event will not accept any liability for material damages or personal injury or death sustained in conjunction with or prior to, during, or after the event.

11. FURTHER INFORMATION

- 11.1 For further information contact:
Dave Kisla
Event Coordinator
davekisla@gmail.com
631-875-9898

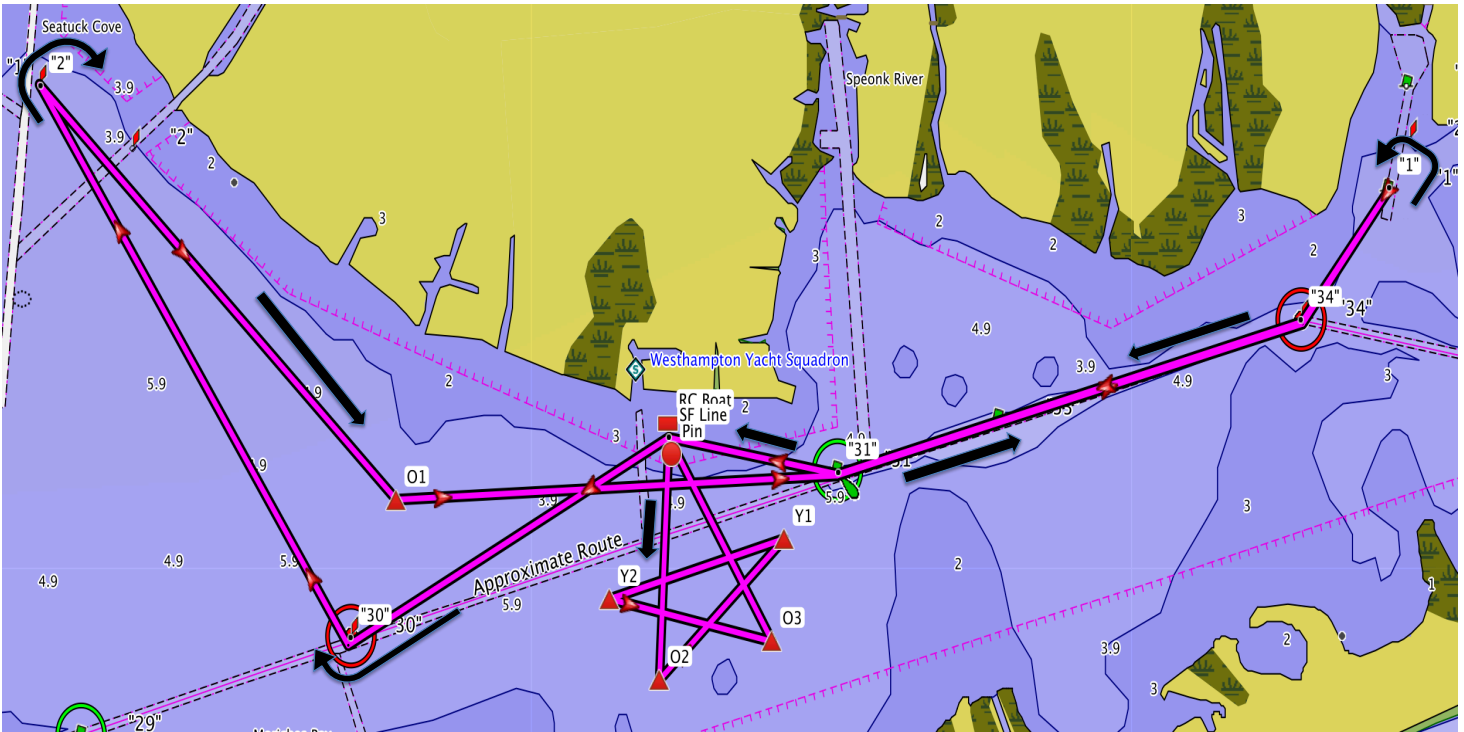
Westhampton Yacht Squadron

Queen of the Bay Race

Sunday, September 01, 2019

Skipper's Meeting: 1200 Warning Signal: 1300

High Tide at Moriches Coast Guard Station: 1302



Leg	From	To	Mark Desc.	Location	Course (°mag)	Mark Rounding	Distance (miles)	Cum Distance (miles)
1	SF	"30"	Red "30"	Channel West	254°	Stbd	0.9	0.9
2	"30"	"2"	Red Private "2"	Seatuck Cove	341°	Stbd	1.5	2.4
3	"2"	O1	Orange Tetrahedron	Remsenburg Shore	149°	Port	1.2	3.6
4	O1	"31"	Green "31"	Channel East	101°	Port	1.0	4.6
5	"31"	"34"	Red "34"	Channel East	88°	Port	1.1	5.7
6	"34"	"1"	Green Private "1"	Beaver Dam Creek	50°	Port	0.3	6.0
7	"1"	"34"	Red "34"	Channel East	231°	Stbd	0.3	6.3
8	"34"	"31"	Green "33"	Channel East	268°	Stbd	1.1	7.4
9	"31"	Pin	Start Pin	WYS	294°	Port	0.4	7.8
10	Pin	O2	Orange Tetrahedron	Channel South	196°	Port	0.5	8.3
11	O2	Y1	Yellow Tetrahedron	Channel South	59°	Port	0.4	8.7
12	Y1	Y2	Yellow Tetrahedron	Channel South	267°	Port	0.4	9.1
13	Y2	O3	Orange Tetrahedron	Channel South	117°	Port	0.4	9.5
14	O3	SF	Finish Line	WYS	343°	Port	0.5	10.0