

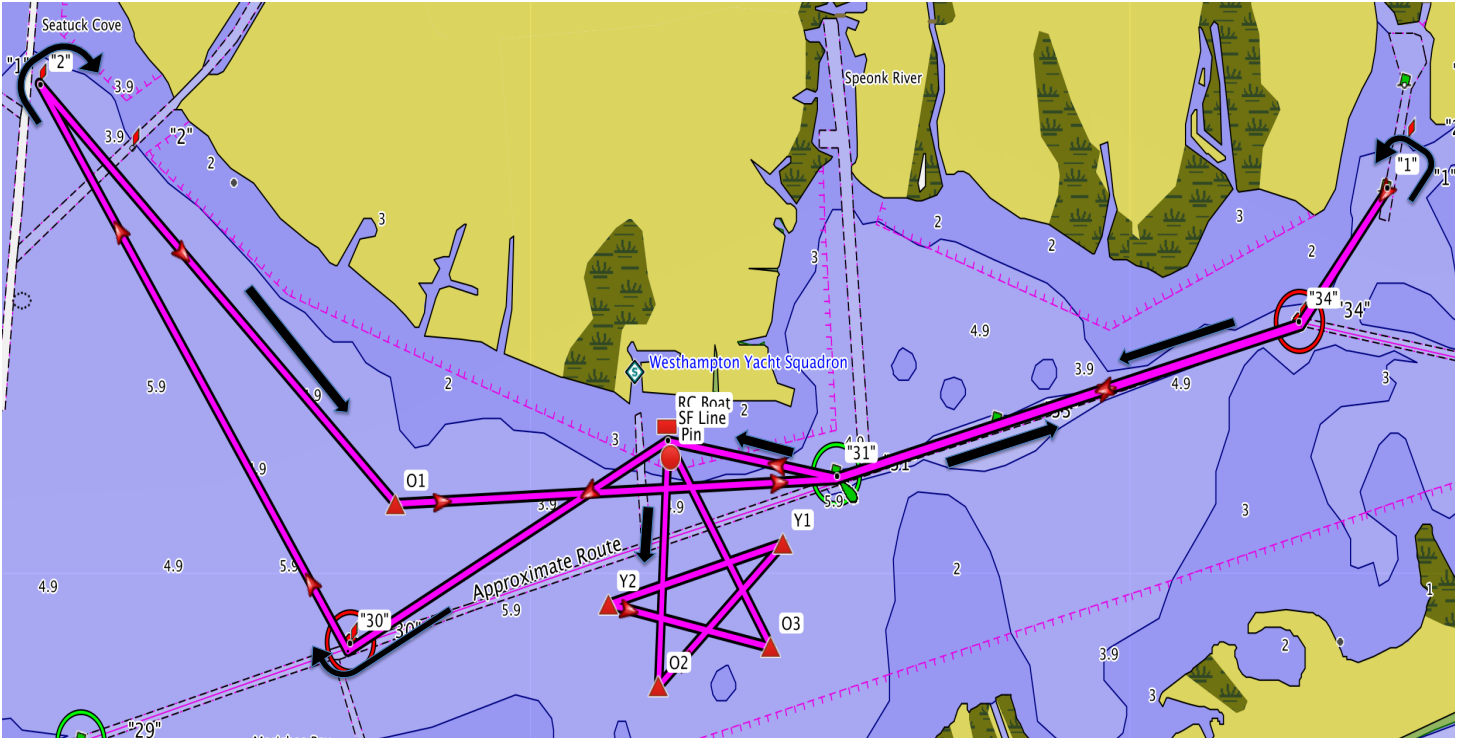
# Westhampton Yacht Squadron

## Queen of the Bay Race

Sunday, September 6, 2020

Skipper's Meeting: 1200 Warning Signal: 1300

High Tide at Moriches Coast Guard Station: 1216



Leg	From	To	Mark Description	Location	Course (°mag)	Mark Rounding	Distance (miles)	Cum Distance (miles)
1	SF	"30"	Red "30"	Channel West	254°	Stbd	0.9	0.9
2	"30"	"2"	Red Private "2"	Seatuck Cove	341°	Stbd	1.5	2.4
3	"2"	O1	Orange Tetrahedron	Remsenburg Shore	149°	Port	1.2	3.6
4	O1	"31"	Green "31"	Channel East	101°	Port	1.0	4.6
5	"31"	"34"	Red "34"	Channel East	88°	Port	1.1	5.7
6	"34"	"1"	Green Private "1"	Beaver Dam Creek	50°	Port	0.3	6.0
7	"1"	"34"	Red "34"	Channel East	231°	Stbd	0.3	6.3
8	"34"	"31"	Green "31"	Channel East	268°	Stbd	1.1	7.4
9	"31"	Pin	Start Pin	WYS	294°	Port	0.4	7.8
10	Pin	O2	Orange Tetrahedron	Channel South	196°	Port	0.5	8.3
11	O2	Y1	Yellow Tetrahedron	Channel South	59°	Port	0.4	8.7
12	Y1	Y2	Yellow Tetrahedron	Channel South	267°	Port	0.4	9.1
13	Y2	O3	Orange Tetrahedron	Channel South	117°	Port	0.4	9.5
14	O3	SF	Finish Line	WYS	343°	Port	0.5	10.0