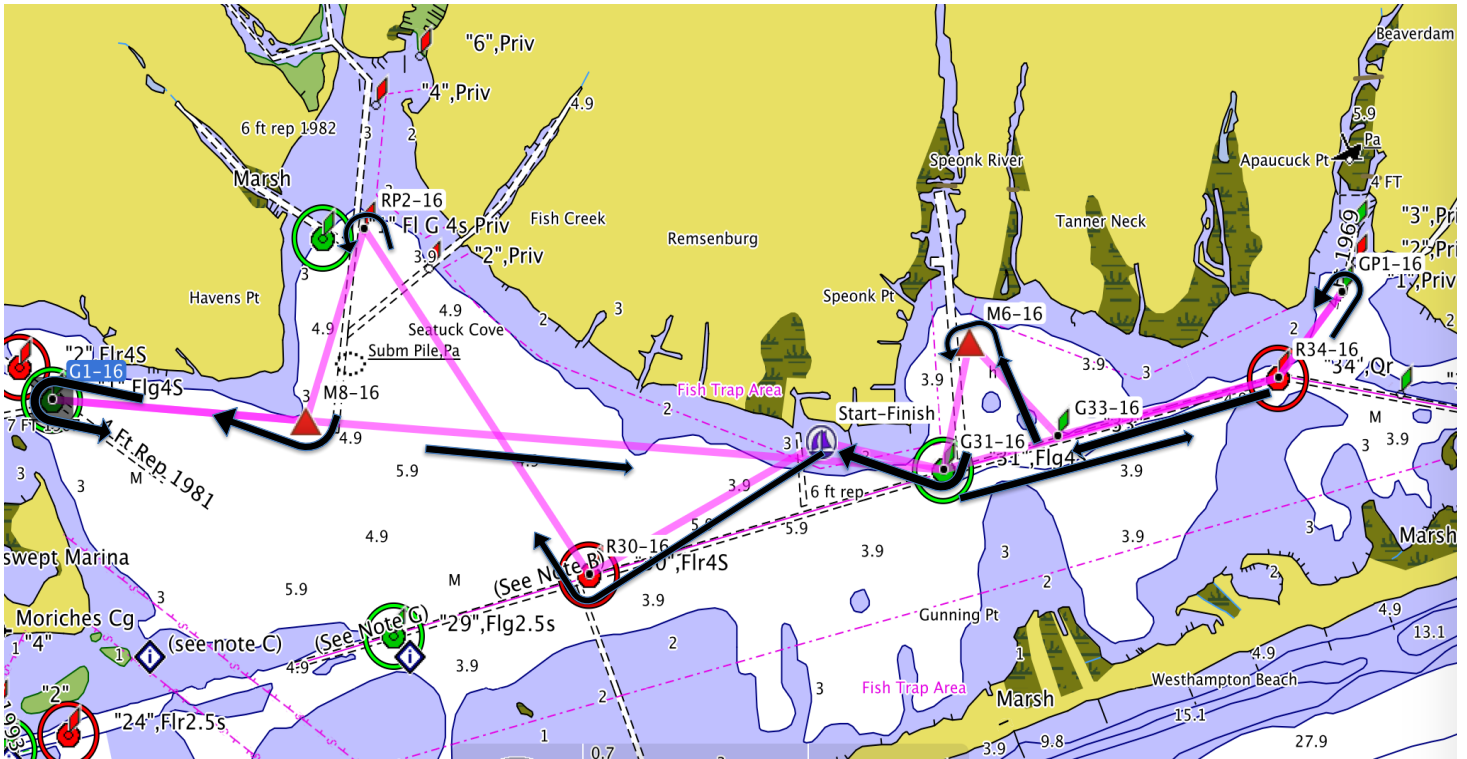


**Westhampton Yacht Squadron**  
**Queen of the Bay Race**  
 Sunday, September 03, 2017  
 Skipper's Meeting: 1200 Warning Signal: 1300  
 Low Tide at Moriches Coast Guard Station: 1322



Leg	From	To	Mark Desc.	Location	Course (°mag)	Mark Rounding	Distance (miles)	Cum Distance (miles)
1	SF	R30	Red "30"	Channel West	254°	Stbd	0.8	0.8
2	R30	RP2	Red Private "2"	Seatuck Cove	341°	Port	1.3	2.1
3	RP2	M8	Orange Tetrahedron	Havens Point	211°	Stbd	0.7	2.8
4	M8	G1	Green "1"	Hart's Cove	289°	Port	0.8	3.6
5	G1	M8	Orange Tetrahedron	Havens Point	109°	Port	0.8	4.4
6	M8	G31	Green "31"	Channel East	108°	Port	2.0	6.4
7	G31	R34	Red "34"	Channel East	88°	Port	1.1	7.5
8	R34	GP1	Green Private "1"	Beaver Dam Creek	50°	Port	0.3	7.8
9	GP1	R34	Red "34"	Channel East	230°	Stbd	0.3	8.1
10	R34	G33	Green "33"	Channel East	269°	Stbd	0.7	8.8
11	G33	M6	Orange Tetrahedron	Speonk River	331°	Port	0.4	9.2
12	M6	G31	Green "31"	Channel East	205°	Stbd	0.4	9.6
13	G31	SF	Finish	WYS	297°	Finish	0.4	10.0