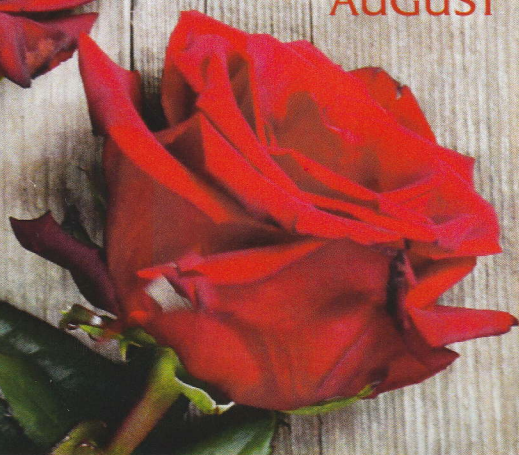
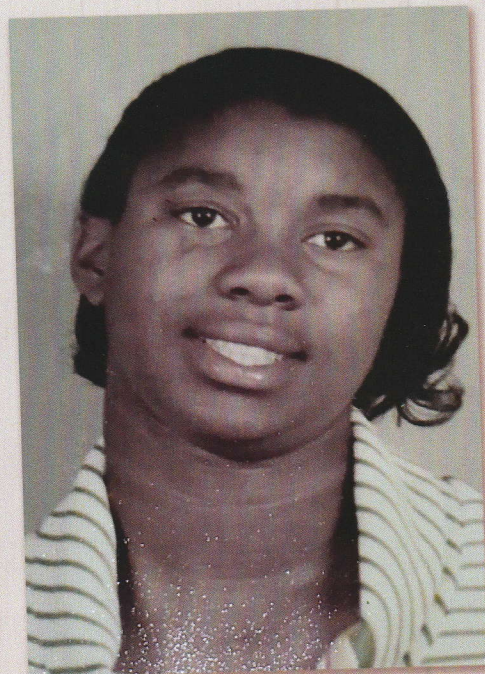
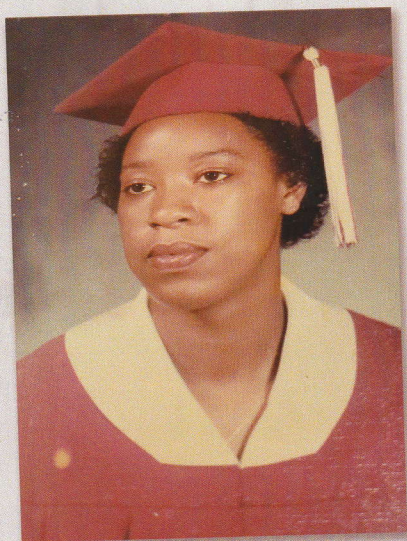


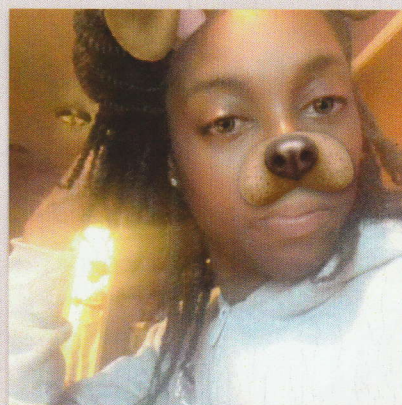
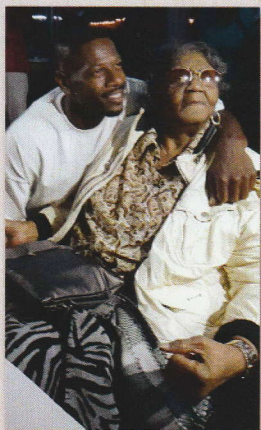
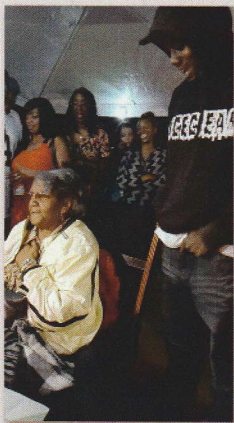


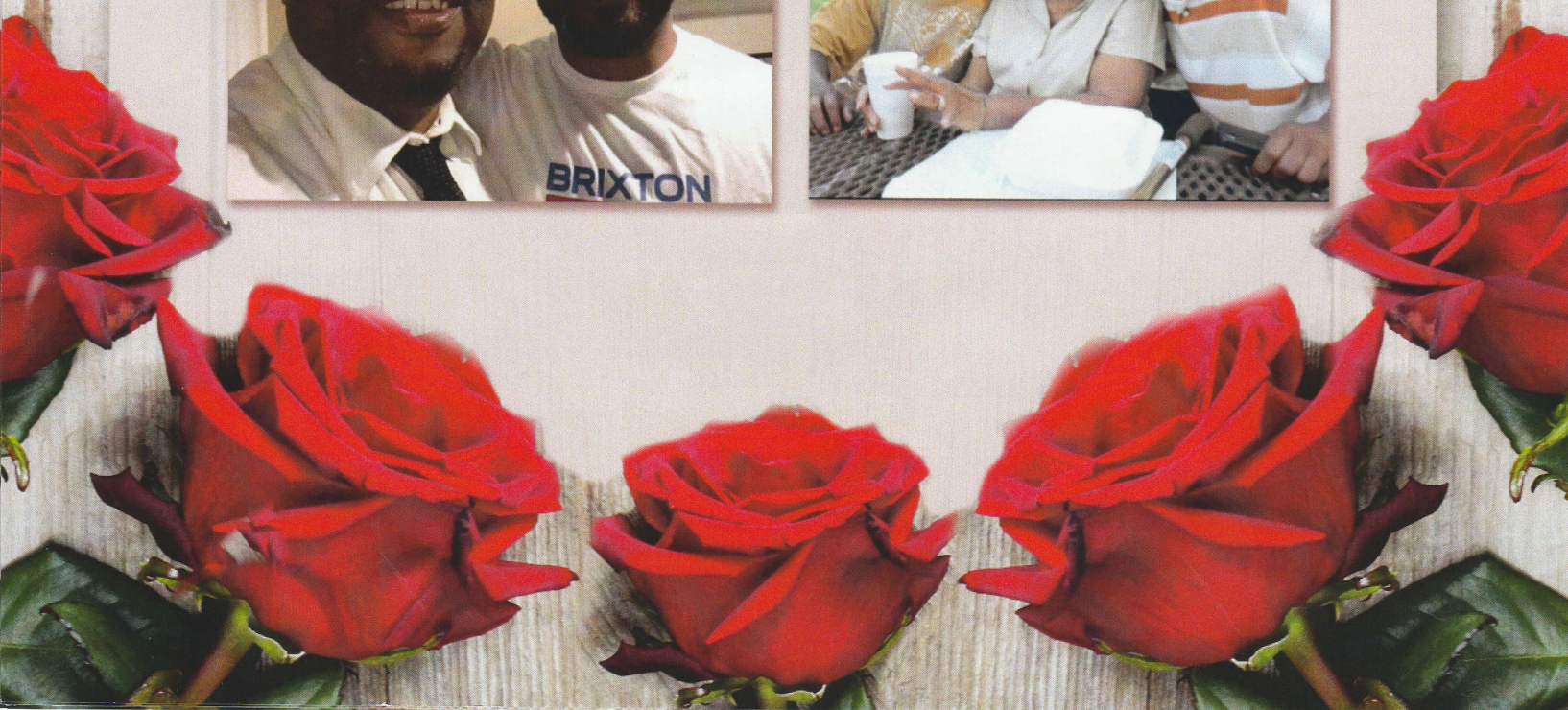
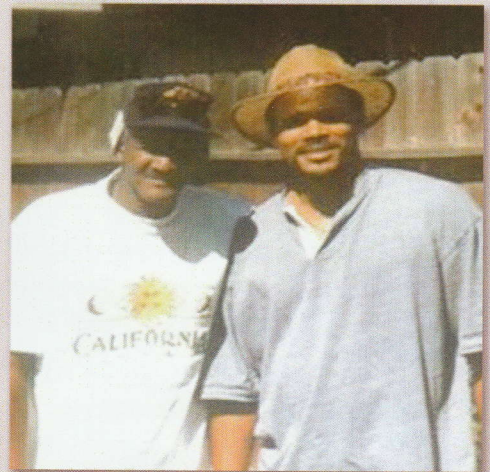
Earline
TURNER-KEYES

AUGUST 18, 1925 · AUGUST 25, 2021









She's Gone

You can shed tears that she is gone

Or you can smile because she has lived

You can close your eyes and pray that she will come back

Or you can open your eyes and see all that she has left

Your heart can be empty because you can't see her

Or you can be full of the love that you shared

You can turn your back on tomorrow and live yesterday

Or you can be happy for tomorrow because of yesterday

You can remember her and only that she is gone

Or you can cherish her memory and let it live on

You can cry and close your mind,

be empty and turn your back

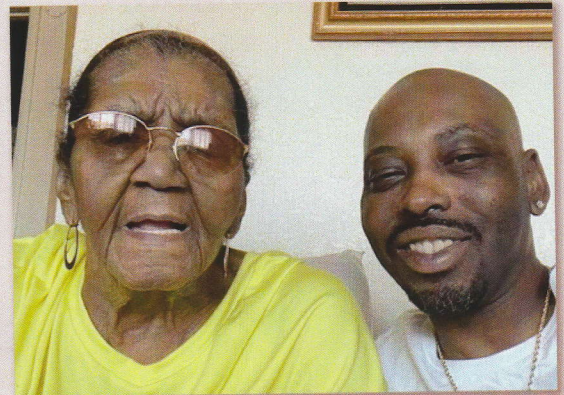
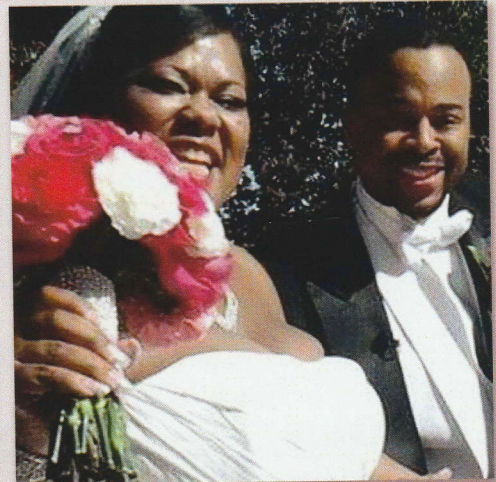
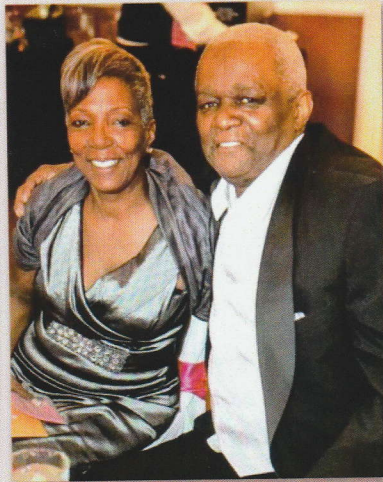
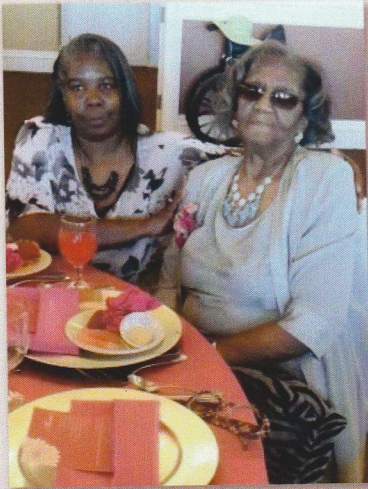
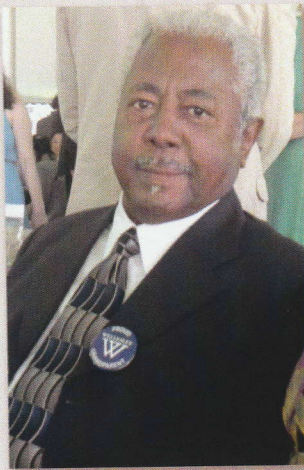
Or you can do what she would want:

smile, open your eyes, love and go on.



Earline
TURNER-KEYES





Whether it was her work in the health care field providing patient care at convalescent homes, cleaning services for the sick and down trodden, or just being a bonus mother, grandmother, aunt, and friend, to her niece's, nephew's, neighborhood kids, and anyone she came in contact with she gave 1000% of herself Always!

Earline had an open-door policy for all who knew her, no matter her location. Her home and heart were filled with love wisdom and fun. She loved music, dancing and would cut a rug in a heartbeat. On any given day you could find her at the casino, on the slot machines or in any of her favorite stores shopping. She was a skilled player an avid lover of basketball, a trait which she passed on to most of her offspring.

Earline lived for and loved the Lord until she was called to eternal rest on August 25, 2021. She was preceded in death by her parents James and Janie Turner, her brothers Curtis, George, R.J., and James Turner. Sisters Oretha Grice, Anna-Bell Fisher, and Rose Clark, Son James Wellington, Grandchildren Kim, Milton, Tammy, Kelly, Jepeobo, Clay, Clayton, and Odell and a number of great-grands.

She leaves to mourn brother Aaron Turner, Children- Melvin (Debra), Ronnie (Joyce), Anthony, Gloria (Odis), Kerry (Deb), Diane Grandkids- Renell, Eric, Karri, Sophia, Anthony, Giannia, Antoinette, Nakia, Antonio, Avery, Brandon, Brandy, John, Jasmine, Shameka, Tamara, Marisha, Tameika, Angel, Antonia, Gary, Odis and a host of great and great-great grands, devoted niece's, nephew's, cousins, and friends. Her life will forever be cherished in our hearts.



Earline
TURNER-KEYES

Reflections of Life

Earlene Turner Keyes affectionately known as Chuka was born on August 18th, 1925, to James and Janie Turner (Leffall) in Marshall Texas. She is the 7th of 9 children.

Earlene received Christ at an early age and was a choir member of Bethel Missionary Baptist church in the early sixties as well as a member of Union Baptist church in the seventies after moving to California.

Earlene married the late James Theodore Wellington (JT) which ended in divorce. To this union were born 2 sons James and Melvin. Earlene had 5 additional blessings Ronnie, Anthony, Gloria, Kerry, and Diane. All 7 of whom were her most precious gifts in life. Earlene later met and married the late Leon Keyes after moving to Oakland no children were born to this Union.

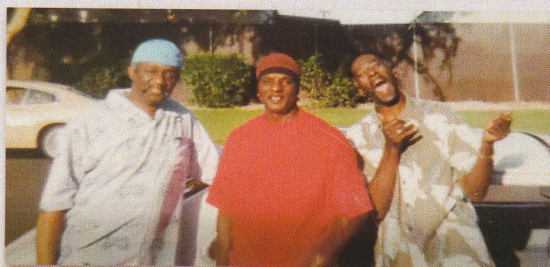
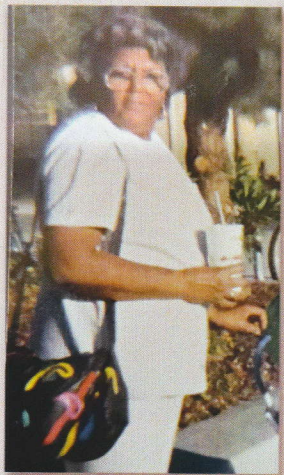
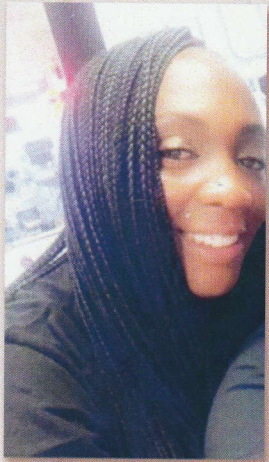
Earlene moved about between Texas and Fresno CA, before she permanently relocated to Oakland in the 60's and purchased a home on 71 st (7-1) in 1968 where she lived until the year 2000 when she ultimately moved to Sacramento.

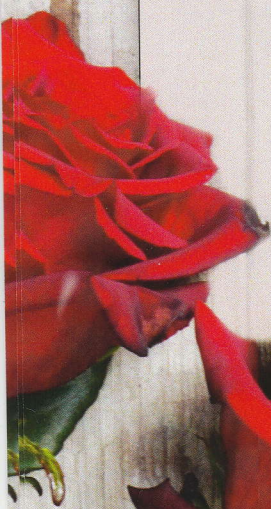
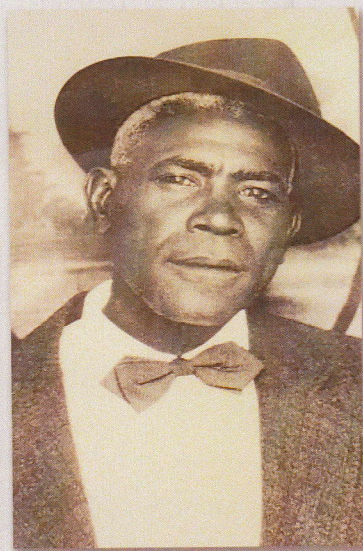
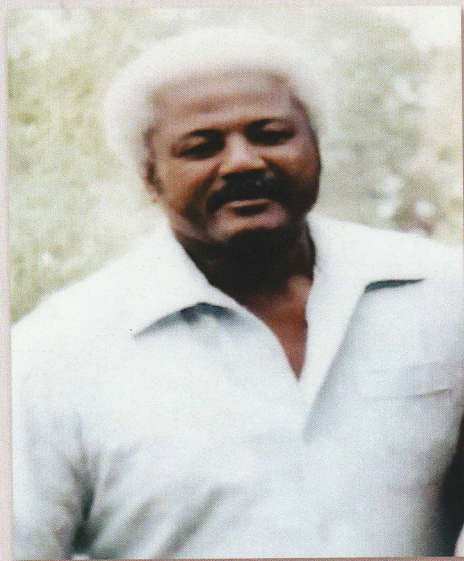
Earlene was a people person. She spent her entire life taking care of others. When she wasn't providing for her own family, she was taking care of folks within the community.



Earlene
TURNER-KEYES







Order of Service

PROCESSIONAL

OPENING SCRIPTURE / PRAYER OF COMFORT

RONNIE WELLINGTON

EXODUS 20:12 · REVELATIONS 21 "4

MUUSICAL SELECTION

MABLE L. PAIGE

OBITUARY & CARDS

SOPHIA/TA'SHIYANNA

EXPRESSIONS OF LOVE (2 MIN)

MUSICAL SELECTION

MABLE L. PAIGE

EULOGY

MONTE MITCHELL

SLIDESHOW/POEM

CLOSING PRAYER

MUSICAL SELECTION

RECESSIONAL

A decorative border at the bottom of the page features several vibrant red roses and two white doves in flight. The doves are positioned on either side of the name 'Earline', appearing to fly towards the center. The roses are scattered around the bottom edge, with some fully bloomed and others as buds. The entire scene is set against a light-colored, vertically-grained wooden background.

Earline
TURNER-KEYES