



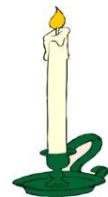
Flower Bearers

Samantha Jones
Janice Wilson
Shanika Simpson
Takeesha Johnson
Debra Grate
Shanice Adams
Alisa Webb

Pall Bearers

Jermaine Mackey
Darrell Cunningham
Dushon Cunningham
Chris Mark
Jeff Jones

*We watched her suffer a little each day,
And it caused us bitter grief to know
She was slowly passing away.
And we couldn't give her relief
Her weary hours and days of pain
Her troubled nights have passed,
And in our aching hearts
We know she has found sweet rest at last.
We owe it all to the one
Who bared all our sin and all our pain,
The Lord and Savior Jesus Christ
Thank you Lord,
For the time that she was with us.
Her Family*



**Professional Services Entrusted to:
Marcus D. Brown Funeral Home, Inc.
1212 South Main Street
Anderson, South Carolina 29624
(864) 225-2220**

"An Eternal Flame of Remembrance"

In Loving Memory

of

Mrs. Annette Gilliard Corner



**Wednesday, October 26, 2016
2:00 p.m.**

**Ollie Robinson Brown Memorial Chapel
of
Marcus D. Brown Funeral Home
Anderson, SC
Rev. Jarvis Brown, Officiating**

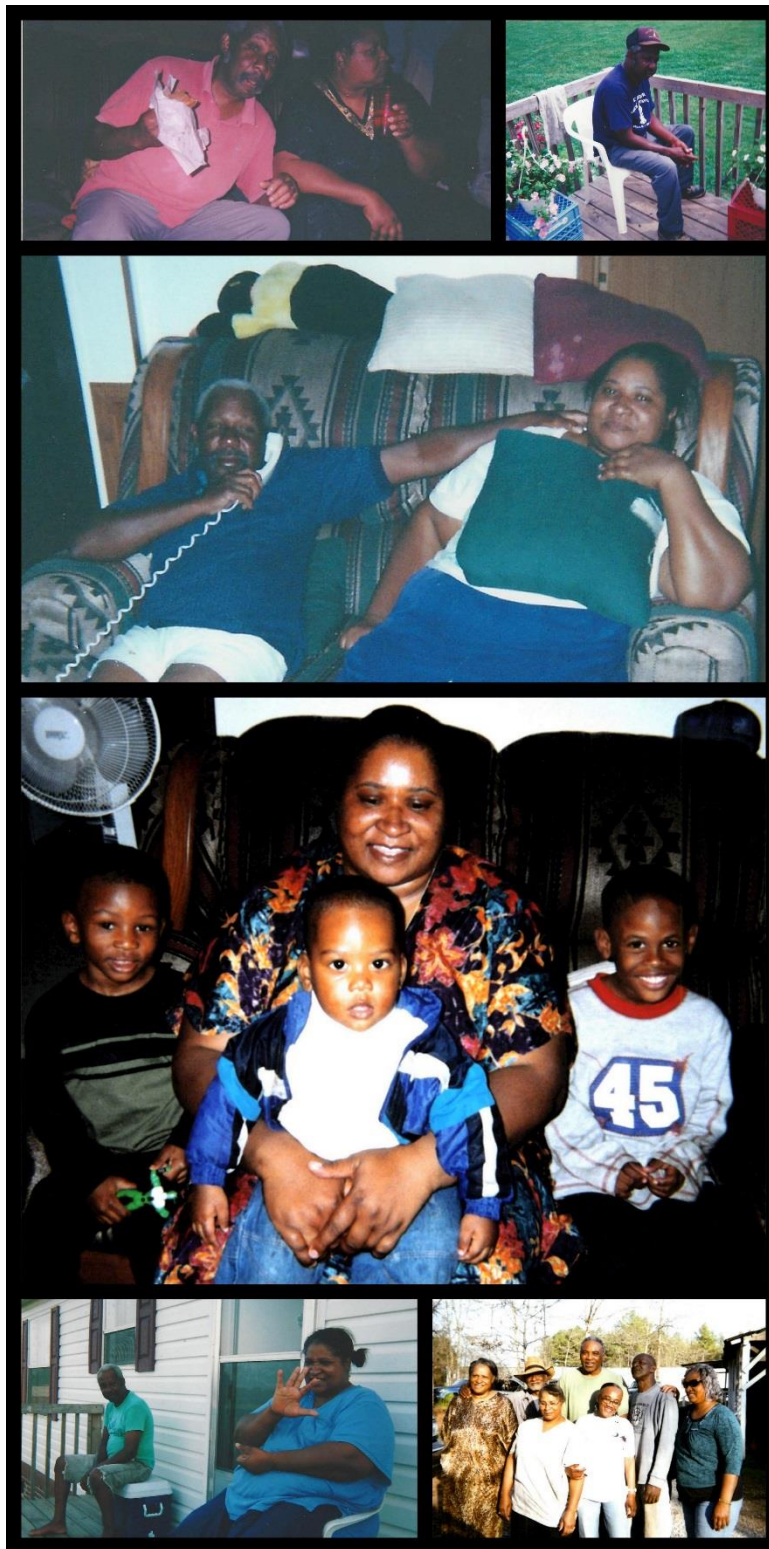
Order of Service

Prelude.....Soft Music
Processional.....Ministers & Family
Selection.....Yolanda G. Ellis
Scripture.....Minister
Prayer.....Minister
Remarks.....Hospice Representative
Selection.....Yolanda G. Ellis
Words of Comfort.....Rev. Jarvis Brown
Closing Prayer.....Rev. Small
Recessional.....Soft Music
Interment.....Anderson Memorial Gardens
Committal/Prayer/Benediction.....Ministers



Acknowledgements

We would like to thank everyone for all you have done for us on this day, that we will never see again. This is the day that the Lord has made, so let us all rejoice and be glad in it and thank the Lord though out this day and the days to come.



Obituary

Mrs. Annette Gilliard Corner, was born September 14, 1950 in Anderson County. She departed this life on October 22, 2016 at her home. She was the daughter of the late David and Josephine Johnson Gilliard.

She joined New Prospect Baptist Church in Townville, SC at an early age. She worked at the Shell Station in Townville, SC and the Truck Stop in Fairplay, SC until her illness.

Annette married Thomas Corner in 1968. There were married for almost 40 years. Thomas passed away in 2007.

She is survived by her sons, Clarence Corner, Darrell Corner, Tony Corner, and Damion Robertson, of Seneca, SC; three sisters, Lucille (Bobby) Lewis, of Seneca, SC, Dorothy (John) Ardister, of Anderson, SC and Rosa Geer, of Anderson, SC; six brothers, James (Idnell) Johnson, of Seneca, SC, William (Grace) Johnson, Alvin (Angie) Gilliard, of Townville, SC; John Thomas Gilliard, of Seneca, SC, David Gilliard and James Gilliard of Anderson, SC; eleven grandchildren, one great-grandchild; two sisters-in-law, Ruth Robinson and Geraldine Robinson of Spartanburg, SC; and a host of aunts, cousins, nieces, nephews and friends.

She was preceded in death by her husband, Thomas Corner; parents, David and Josephine Johnson Gilliard; one son, Ronnie James Corner; and one sister, Lena Smith.

