

---

# *Hinchliff Pearson West*

---

FUNERAL DIRECTORS  
CREMATION SERVICES

---

**SERVING THE COMMUNITY  
FOR OVER 100 YEARS**

[www.h-p-w.com](http://www.h-p-w.com)



1070 West Fremont Street ♦ Galesburg, IL 61401 ♦ (309) 343-2101



206 North Washington Street ♦ Abingdon, IL 61410 ♦ (309) 462-2325

---

# *Hinchliff Pearson West*

FUNERAL DIRECTORS  
CREMATION SERVICES

---

1070 West Fremont Street  
Galesburg, IL 61401  
(309) 343-2101  
Fax: (309) 343-7070

206 North Washington Street  
Abingdon, IL 61410  
(309) 462-2325  
Fax: (309) 462-3095

www.h-p-w.com  
info@h-p-w.com

## General Price List

Effective January 1, 2024

Subject to change without notice.

### Traditional Funeral Service

We offer to the families we serve this package which includes, but is not limited to, the following services, use of equipment and facilities: Removal and transfer of the remains to the funeral home, Professional care of the remains which includes embalming, cosmetizing, casketing and other items which are necessary for the funeral services, Consultation with the family, clergy and friends concerning the arrangements for the visitation and funeral, Preparing and filing all necessary documents and notices, Necessary staff to prepare for and be available during the visitation, Personal attention to all the family's needs which include being available the afternoon of the visitation for a private viewing, if desired, Necessary staff to service the funeral at the location of the family's choice, Necessary staff to attend the disposition services and post-service activities, Use of necessary vehicles to transport the family within the local area, Use of necessary vehicles to transport the pallbearers to the cemetery, Use of the hearse to transport the remains to the location of the final disposition, Transportation of floral remembrances to the cemetery or, upon the family's request, to another location, A funeral register book completed with the details of the service, floral remembrances and friends who called to pay their respects, All necessary acknowledgment cards and Twenty-four hour attention to all details surrounding the performance of our services.

**\$8,590.00**

(Charges included in this amount are designated by )

The goods and services shown below are those we can provide to our customers. You may choose only the items you desire. However any funeral arrangements you select will include a charge for our basic services and overhead. If legal or other requirements mean you must buy items you did not specifically ask for, we will explain the reason in writing on the statement we provide describing the funeral goods and services you selected.

## Services of the Funeral Home and Staff

If you desire a service other than the Traditional Funeral Service, the following prices will allow you to choose only the items you desire to use.

### Charges for Professional Services and Facilities

- Minimum professional services of the funeral director and staff .....\$3,395.00

This professional service charge includes, but is not limited to, our initial consultation and arrangements made with the responsible party to determine the service desired; the preparation and filing of the necessary notices, authorizations and consents; and the coordination of these service plans with all participants involved.

This fee for our basic services and overhead will be added to the total cost of the funeral arrangements you select. (This fee is already included in our charges for direct cremations, immediate burials, and forwarding or receiving remains.)

### Additional services of the funeral directors and staff

- Coordination and direction of a funeral or memorial service, as well as necessary facilities, at the funeral home or at another location .....\$895.00
- Supervision and facilities for the visitation period, arrangement of floral pieces and other memorial tributes for a visitation at the funeral home or at another location (each night or portion of any day) .....\$695.00
- Supervision and facilities for the visitation period, arrangement of floral pieces and other memorial tributes for a private viewing .....\$300.00
- Supervision for committal services at cemetery or crematory .....\$595.00
- Embalming .....\$995.00

Embalming is the scientific preparation and sanitary care of the body by licensed professional using universal precautions for the protection of public health. Except in certain special cases, embalming is not required by law. Embalming may be necessary, however, if you select certain funeral arrangements, such as a funeral with viewing. If you do not want embalming, you usually have the right to choose an arrangement that does not require you to pay for it, such as direct cremation or immediate burial. All embalming is performed by licensed staff or agents who may be assisted by licensed trainees or mortuary students to the extent allowed by law.

### Other preparation of the body .....

- Standard cosmetic care, dressing and casketing .....\$475.00
- Special care of autopsied cases, additional charge .....\$150.00
- Special care of donor cases, additional charge .....\$190.00
- Special or extensive restorative care, additional charge based on number of hours, charge is per hour .....\$100.00
- Hairdressing by staff, additional charge.....\$50.00

### Charges for Equipment

- Local transfer of remains to funeral home .....\$695.00
- Use of hearse .....\$595.00
- Use of limousine .....\$350.00
- Use of utility vehicle .....\$350.00

For transportation out of the local area, i.e., greater than fifty miles one way, there will be a charge of \$2.50 per loaded mile per car.

- Transportation to or from Chicago.....\$525.00
- Transportation to or from Iowa City.....\$300.00

**Alternatives to the Traditional Funeral Service**

- Forwarding of remains to another funeral home .....\$4,140.00  
This charge includes the removal and shelter of remains, minimum staff services, necessary authorizations, embalming and local transportation. This does not include any shipping charges.
- Receiving of remains from another funeral home .....\$3,740.00  
This charge includes minimum staff services, care and shelter of the remains and local transportation to the cemetery.

**Direct cremations**

Our charge for cremation without any ceremony includes:

- Removal and shelter of the remains
  - Transportation to the crematory
  - Minimum professional staff services
- (Cremation will be performed as soon as practical but may take as long as two weeks.)
- Direct cremation-with obituary posted to our website/Cremation Process and Permits included.....\$4,286.00
  - Direct cremation-without obituary/Cremation Process and Permits included .....\$3,373.00

Alternative containers encase the body and can be made of materials like fiberboard or composition materials (with or without an outside covering). The containers we provide are constructed out of cardboard. Please see the detailed Cremation Price List for additional options.

**Immediate Burials**

Our charge for immediate burial without any ceremony includes:

- Removal and shelter of the remains
  - Transportation to the cemetery
  - Minimum professional staff services
  - Cemetery charges are a separate cash advance
- Immediate Burial with casket provided by purchaser .....\$4,584.00
  - Immediate Burial with casket purchased from funeral home (casket price is additional) .....\$4,584.00

**Caskets: from \$1,500.00 to \$12,000.00**  
(A complete price list will be provided at the funeral home)

**Outer burial containers: from \$900.00 to \$15,500.00**  
(A complete price list will be provided at the funeral home)

## Tier Package Pricing For Traditional Burial

In an effort to make the selection process simpler and easier for our families, on the following pages you will find several packages for burial which include all the necessary services and items to celebrate the memory of your loved one. The package price list includes all the following:

### Professional Services

- Basic Services of Funeral Director and Staff
- Embalming & Restorative Arts
- Cosmetology, Dressing, Casketing & other Preparation of the Body
- Register Book and Memorial Folders
- Flowers (average cost of \$300)

### Facilities, Staff & Equipment

- Viewing/ Visitation/ Gathering in our Funeral Home or another facility
- Celebration of Life in our Funeral Home or another facility
- Graveside Committal

### Transportation & Automotive

- Transfer of Deceased to the Funeral Home
- Funeral Coach (Hearse)
- Service / Utility Vehicle
- 1 or 2 Limousines

### Casket & Vault

- Traditional Burial Casket (each Tier includes specific caskets listed)
- Burial Vault (each Tier includes specific vault listed)

### Additional Expenses

- Cash Advance Items (approx \$1,800)
- Taxes

---

# *Hinchliff Pearson West*

FUNERAL DIRECTORS  
CREMATION SERVICES

---

1070 West Fremont Street  
Galesburg, IL 61401  
(309) 343-2101

206 North Washington Street  
Abingdon, IL 61410  
(309) 462-2325

# Premium Casket & Vault Traditional Burial Package (Includes SST Vault)

\$16,090

*Caskets in this package are \$4,200*

## Moonstone SST

2 Point Natural Brush / Gunmetal

White Velvet

Stainless Steel



## Morgan SST

4 Pt Natural Brushed Champagne Rose

Beige Velvet

Stainless Steel





**Barnwood**

Weathered Oak Finish  
Natural Duckcloth  
Weathered Oak Hardwood

**Herron**

Two Tone Sable Satin Finish  
Beige Basketweave  
Solid Hardwood



**Oak Manor**

Light Satin Stain  
Almond Velvet  
Solid Oak

## Heritage Casket & Vault Traditional Burial Package (Includes Venetian Vault)

\$14,490

*Caskets in this package are \$3,500*

### **Buffalo Oak**

Medium Satin Finish

Rosetan Crepe

Oak Veneer

### **Kerrigan Copper**

Natural Brush / Copper

Ivory Velvet

18 Gauge Steel





### **Hyacinth**

Natural Brushed Hyacinth  
Shaded Coral  
Pink Velvet  
18 Gauge Steel



### **Stratford**

Gold Brushed Ebony  
Gold Pin Stripe  
Beige Velvet  
18 Gauge Steel

# Heritage Casket & Vault Burial Package (Includes Venetian Vault)

## Jason Poplar

Honey Satin Finish  
Rosetan Crepe  
Solid Poplar



## Sandhurst

Light Pecan Satin Finish  
Rosetan Crepe  
Solid Poplar





**Monroe**  
Cherry Gloss Finish  
Rosetan Crepe  
Solid Poplar



**Monroe**  
Walnut Gloss Finish  
Rosetan Crepe  
Solid Poplar

## Traditional Casket & Vault Burial Package (Includes Continental Vault)

\$13,590

*Caskets in this package are \$2,900*

### Richmond

Monarch Blue

Blue Crepe

18 Gauge Steel

### Richmond

Bronze and Beige

Rosetan Crepe

18 Gauge Steel





• Ebony w/White Crepe



• Orchid w/Pink Crepe



• Silver w/White Crepe



• Light Blue w/Blue Crepe



• White w/Pink Crepe

# Traditional Casket & Vault Burial Package (Includes Continental Vault)

## Tremont Green

Hunter Green

Eggshell Crepe

20 Gauge Gasketed Steel



•Wineberry shaded Silver  
White Crepe



•Purple shaded Silver  
White Crepe



**Estate**

Golden Cherry  
Rosetan Crepe  
Engineered Wood  
\* 26" Interior Width



**Bancroft**

Amber Pine  
Beige Linwood  
Engineered Wood



**Quincy**

Dark Cherry  
Rosetan Crepe  
Engineered Wood

# Patriot Plus Casket & Vault Traditional Burial Package (Includes Monticello Vault)

\$12,890

*Caskets in this package are \$2,500*

## Patriot

Metallic Blue

Blue Crepe

18 Gauge Steel



## Patriot

Pewter

White Crepe

18 Gauge Steel





**Corinthian**  
 White  
 White Crepe  
 18 Gauge Steel

**Additional Colors Available:**



- Blue Blue Crepe



- White Pink Crepe



**Serenity**  
 Powder Blue  
 Blue Crepe  
 In God's Care Head Panel  
 20 Gauge Gasketed Steel

**Additional Colors Available:**



- Copper w/ Rosetan Crepe



- Silver w/ White Crepe



- Orchid w/ Pink Crepe



- White w/ White Crepe

# Simple Casket & Vault Traditional Burial Package (Includes Monticello Vault)

\$12,590

*Caskets in this package are \$2,200*

## Tremont Copper

Copper shaded Ebony

Rosetan Crepe

20 Gauge Gasketed Steel



### Additional Colors Available:



•Blue shaded Silver  
Blue Crepe



•Silver shaded Ebony  
White Crepe



•White shaded Orchid  
Pink Crepe



•White shaded Gold  
White Crepe

# The Franklin Series



**Silver**  
Silver  
White Crepe  
20 Gauge Gasketed Steel



**Ebony**  
Ebony  
Silver Pin Stripe  
White Crepe  
20 Gauge Gasketed Steel

## Additional Colors Available:



•Blue  
Blue Crepe



•Copper  
Rosetan Crepe



•White  
White Crepe



•Orchid  
Pink Crepe

## Basic Casket & Vault Traditional Burial Package (Includes Monticello Vault)

\$11,890

*Caskets in this package are \$1,500*

### Truman

Brown

White Crepe

20 Gauge, Non-Gasketed Steel



### Truman

Grey

White Crepe

20 Gauge, Non-Gasketed Steel





**Clair**  
 Copper  
 Rosetan Crepe  
 20 Gauge Non-Gasketed Steel

**Additional Colors Available:**



• Ebony w/ White Crepe



• Blue w/ Blue Crepe



• Silver w/ White Crepe



• White w/ White Crepe



**Alex**  
 Blue  
 Blue Crepe  
 20 Gauge Non-Gasketed Steel

**Additional Colors Available:**



• Copper w/ Rosetan Crepe



• Ebony w/ White Crepe

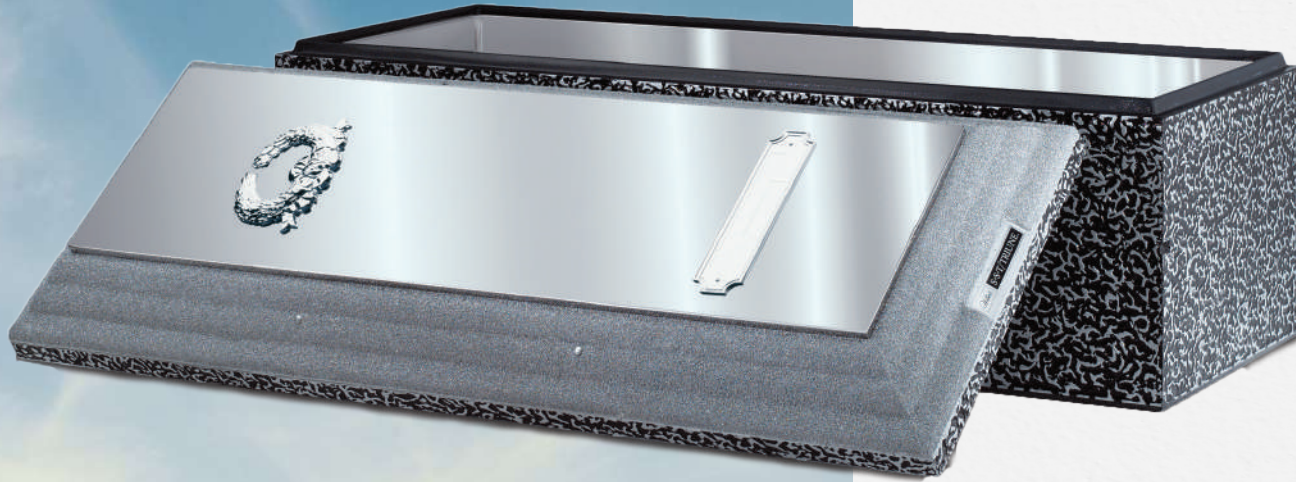


• Silver w/ White Crepe



• White w/ Pink Crepe  
 (Also available with White Crepe)

## Burial Vaults Included In Tier Traditional Burial Packages



### SST

Included in Premium  
Burial Package  
(*\$3,000 Vault Only*)

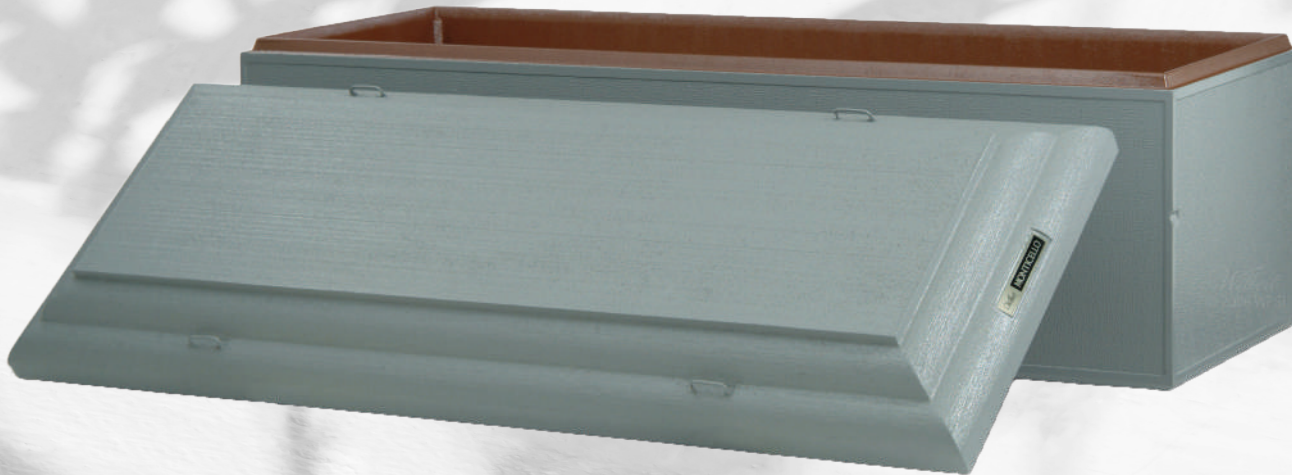


### Venetian

Included in Heritage  
Burial Package  
(*\$2,100 Vault Only*)



**Continental**  
Included in Traditional  
Burial Package  
(\$1,800 Vault Only)



**Monticello**  
Included in Simple, Basic & Patriot  
Burial Packages  
(\$1,500 Vault Only)

## Stand Alone Casket Offerings (Services and Vaults NOT included)



### Agean Altoona Solid Copper

2pt Natural Brush / Altoona Bronze

Camelia Velvet

Solid Copper

\$7,500 Casket Only



### Athena Solid Copper

2pt Natural Brush / Lilac

Pink Velvet

Solid Copper

\$7,500 Casket Only



**Nelson Cherry**

Colonial Gloss Finish

Light Beige Velvet

Solid Cherry

\$7,100 Casket Only



**Mansfield Oak**

Nut Brown Satin Finish

Beige Velvet

Solid Oak

\$6,900 Casket Only

## Stand Alone Casket Offerings (Services and Vaults NOT included)



### Roosevelt Walnut

Walnut Satin Finish

Beige Velvet

Solid Walnut

\$5,300 Casket Only



### Wyoming Maple

Natural Maple Gloss Finish

Champagne Velvet

Solid Maple

\$5,900 Casket Only



**Clark**

Sangria Gloss Finish  
Beige Velvet  
Cherry Veneer  
\$4,500 Casket Only



**Princeville**

Pecan Satin Finish  
Champagne Velvet  
Solid Pecan  
\$4,800 Casket Only

---

# *Hinchliff Pearson West*

---

FUNERAL DIRECTORS  
CREMATION SERVICES

---

You talk about many things with your loved ones: from day-to-day details to big events. Sharing stories with those who matter most isn't just important today; it will be especially significant when it's time to honor and commemorate your lives.

Memorialization at the end of life is more than it used to be. It can reflect a person's life story and be transformative, healing and comforting.

Meaningful memorialization starts when loved ones talk about what matters most: memories made, lessons learned and how they hope to be remembered.

*Hinchliff • Pearson • West*  
Funeral Directors and Cremation Services  
1070 West Fremont Street  
Galesburg, IL 61401  
(309) 343-2101

*Hinchliff • Pearson • West*  
Funeral Directors and Cremation Services  
206 North Washington Street  
Abingdon, IL 61410  
(309) 462-2325

[www.h-p-w.com](http://www.h-p-w.com)

*Printed image colors may vary slightly from actual product.*

Hinchliff • Pearson • West Funeral Homes makes no representations or warranties regarding caskets, outer burial containers, cremation urns, preplanning caskets, or other funeral goods sold by the funeral home. The only warranties, expressed or implied, granted in connection with the goods sold with our funeral home are the expressed warranties, if any extended by the manufacturers thereof. No other warranties, expressed or implied, including the implied warranties of merchantability or fitness for a particular purpose, are extended by this funeral home.