



**Your Memories.  
Your Community. Your Funeral Homes.**

**General Price List**

**Taylor A. Brown, Managing Director and Owner**

**The prices set out in this schedule are effective as of February 7, 2024  
Taxes are in addition to the prices shown, unless otherwise specified.**

**T.A. Brown Funeral Home**  
[www.tabrownfuneralhome.com](http://www.tabrownfuneralhome.com)  
510 Mill Street, Port Elgin, ON  
519 832 2222

**Tannahill Funeral Home**  
[www.tannahill.com](http://www.tannahill.com)  
1178 4<sup>th</sup> Ave West, Owen Sound, ON  
519 376 3710

## PROFESSIONAL & STAFF SERVICES

### Basic Professional Fees

Professional consultation with licensed personnel, which may include but is not limited to, expert advice on options to meet your needs, including essential services relating to disposition, drafting notices, planning scheduling of services, advising regarding possible government benefits. A Basic professional fee is payable whenever we provide services to you.

**\$ 795**

### Co-ordinating Rites and Ceremonies

Co-ordination of all rites and ceremonies, before, during and after they have been provided, including services and supplies provided by us, as well as those provided by third party suppliers, such as flowers and death notices.

**\$ 550 - 1175**

### Documentation – Permits, Forms, etc.

Completion and filing of all documents necessary to carry out the services and supplies requested, including, but not limited to, death registration, burial permit, coroner's certificate for cremation, documentation necessary to ship the body out of the country. As part of this service, we will provide you with as many proof of death certificates as are required by the estate; such certificates are usually accepted for most estate settlement purposes, but sometimes a provincial Death Certificate will be necessary and is available from the Office of the Registrar General.

**\$ 300**

### Transport Remains

Transportation of the remains from one place to another, for example the hospital to our premises, or from our premises to the cemetery or crematorium using a transfer vehicle, for distances not exceeding 25 km. A charge applies for each transportation request. This cost is included in the cost of the vehicle that would be required for the transport.

(see Vehicles)

*\$ 150 Additional staff service charge for removal from a residence or other non-institutional setting.*

*\$ 150 Additional staff service charge for remains in excess of 300 lbs.*

*A one way per kilometer rate will apply to all transports in excess of 25km from the central location in Owen Sound.*

*Transportation to and from the Flesherton Cemetery Crematorium, in Flesherton, Ontario will be charged at \$300.00 return including staff and kilometers.*

**Basic Preparation of Remains**

(requires Facilities for preparation/embalming/shelter)

The preparation of the body for placement into the casket, including bathing, dressing and the setting of facial features for identification or viewing without embalming.

**\$ 180**

**Embalming of Remains** (in addition to basic preparation of remains)

Embalming is the process of replacing blood and bodily fluids with chemical preservatives. It is a process of sanitation, restoration and temporary preservation. Embalming is not legally required, but may be recommended to preserve the body between the time of death and the visitation or disposition of the deceased. Our professional funeral directors will make a recommendation based on the condition of the body and expected service needs.

**\$ 380**

**Staff Services for Visitation at Our Location**

Staff to coordinate and oversee the visitation (informal gathering) at our premises for a period of up to 4 hours.

If the visitation takes place at an offsite location, an equipment charge (see below) and additional staff services charges will apply.

**\$ 275**

**Staff Services for Visitation at a Remote Location**

(requires equipment for visitation and staff services and equipment for ceremony)

Staff to coordinate and oversee the visitation (informal gathering) at a remote location for a period of up to 4 hours.

**\$ 350**

**Equipment for Visitation at a Remote Location**

(2<sup>nd</sup> day at remote location)

(requires staff services for visitation at a remote location)

(requires Equipment for ceremony at a remote location)

Transportation and set-up of any necessary equipment, flowers, etc. for visitation at a remote location within 25km.

**\$ 125**

**Staff Services for Ceremony at Our Location**

Staff to coordinate and oversee the ceremony or memorial at our premises. If the ceremony takes place at an offsite location, an equipment charge (see below) and additional staff services charges will apply.

**\$ 290**

**Staff Services for a Ceremony at a Remote Location**

(requires equipment for services at a remote location)

Staff to coordinate and oversee the ceremony or memorial at a remote location.

**\$ 275**

**Equipment for Ceremony at a Remote Location**

Initial transportation and set-up of any necessary equipment, flowers, etc. for visitation at a remote location within 25km.

**\$ 580**

**Staff Services for Reception**

Two hostesses will be provided to serve, and clean up as reception is ongoing.

**\$ 250**

**FACILITY CHARGES****Basic Facilities**

Use of our general and common areas, parking lot, public washrooms, cloakrooms, heating, lighting and maintenance. This charge applies whenever we provide services to you.

**\$ 735**

**Facilities for Preparation/Embalming/Shelter**

Facilities used to prepare, embalm and/or shelter the body; this charge applies whenever the body is in our facility for any purpose.

**\$ 230**

**Facilities for Visitation**

(requires staff services for visitation)

Designated facilities used for visitation for any part of a day up to 4 hours.

**\$ 200**

**Facilities for Ceremony**

(requires staff services for ceremony)

Designated facilities at our Funeral Home used for the ceremony or memorial service or initial public gathering.

**\$ 655**

**Reception Facilities**

(requires staff services for reception)

Use of facilities for a reception following the ceremony or memorial service, which includes the set up of the facilities, the use of the facilities and amenities, including, plates, cups, glasses, napkins, and coffee percolator.

**\$ 395 - 495**



## **VEHICLES**

### **Transfer Vehicle:**

This vehicle is used for the transfer of the remains of the deceased from the place of death to the funeral home. This fee applies to all transfers performed by our firm.

**\$ 225.00**

### **Utility Vehicle:**

This vehicle is used by our staff for picking up and filing documentation. It is also used for delivery of equipment and floral tributes to the cemetery, church, or other place of service.

**\$ 175**

### **Administration Vehicle:**

This vehicle is used by our staff in making arrangements, and any other trips that are necessary in conjunction with the services being provided by this firm, such as, return of cremated remains from the crematorium. It is also used for transportation of clergy to the funeral home or place of funeral service, and/or to the place of final disposition. This is used for leading and control of the funeral procession by a licensed funeral director.

**\$ 225**

### **Service Vehicle:**

The use of this specialized vehicle includes the transportation of the deceased from our facility to the place of funeral ceremony, and to the place of final disposition.

**\$ 275**

### **Additional Mileage and Staff**

Additional mileage will be charged on any vehicle use that exceeds 25km from the central funeral home location of Owen Sound. Mileage will be calculated at the Ontario Coroner's rate of \$ 2.40 per kilometre, starting from the central location of Owen Sound for each kilometre travelled one way. A minimum staff charge of \$150.00 for the first 3 hours and \$25.00 for each additional hour.

## OFFERING "A"

### TRADITIONAL FUNERAL SERVICE WITH VISITATION HOURS

#### **Professional Services:**

Basic Professional Fee	795.00
Coordinating rites and ceremonies	1,175.00
Staff services for ceremony	290.00
Staff services for visitation	275.00
Documentation	300.00
Embalming of remains	380.00
Basic preparation of remains	180.00
	<b>\$3,395.00</b>

#### **Facilities & Equipment:**

Basic Facilities	735.00
Facilities for preparation/embalming/shelter	230.00
Facilities for ceremony	655.00
Facilities for visitation	200.00
	<b>\$1,820.00</b>

#### **Automotive Equipment:**

Transfer Vehicle	225.00
Utility Vehicle	175.00
Administration Vehicle	225.00
Service Vehicle	275.00
	<b><u>\$900.00</u></b>

**TOTAL SERVICES AS ABOVE:** **\$ 6115.00**

## OFFERING "A2" Remote Location Service

### TRADITIONAL FUNERAL SERVICE WITH VISITATION HOURS

#### **Professional Services:**

Basic Professional Fee	795.00
Coordinating rites and ceremonies	1,175.00
Staff Services for a ceremony at a remote location	365.00
Staff Services for visitation	275.00
Documentation	300.00
Embalming of remains	380.00
Basic preparation of remains	180.00
	<b>\$3,470.00</b>

#### **Facilities & Equipment:**

Basic Facilities	735.00
Facilities for preparation/embalming/shelter	230.00
Equipment for ceremony at a remote location	580.00
Facilities for visitation	200.00
	<b>\$1,745.00</b>

#### **Automotive Equipment:**

Transfer Vehicle	225.00
Utility Vehicle	175.00
Administration Vehicle	225.00
Service Vehicle	275.00
	<b><u>\$900.00</u></b>

**TOTAL SERVICES AS ABOVE:** **\$ 6115.00**

## OFFERING "A3" Remote Location Service and Visiting

### TRADITIONAL FUNERAL SERVICE WITH VISITATION HOURS

#### **Professional Services:**

Basic Professional Fee	795.00
Coordinating rites and ceremonies	1,175.00
Staff Services for a ceremony at a remote location	365.00
Staff Services for visitation at a remote location	350.00
Documentation	300.00
Embalming of remains	380.00
Basic preparation of remains	180.00
	<b>\$3,545.00</b>

#### **Facilities & Equipment:**

Basic Facilities	735.00
Facilities for preparation/embalming/shelter	230.00
Equipment for ceremony at a remote location	580.00
Equipment for visiting at a remote location (2 <sup>nd</sup> day)	125.00
	<b>\$1,670.00</b>

#### **Automotive Equipment:**

Transfer Vehicle	225.00
Utility Vehicle	175.00
Administration Vehicle	225.00
Service Vehicle	275.00
	<b><u>\$900.00</u></b>

**TOTAL SERVICES AS ABOVE:** **\$ 6115.00**



## **OFFERING "B"**

### **TRADITIONAL FUNERAL WITH NO VISITATION HOURS** **(Facilities available one hour prior to service)**

#### **Professional Services:**

Basic Professional Fee	795.00
Coordinating rites and ceremonies	1,175.00
Staff Services for ceremony	290.00
Documentation	300.00
Embalming of remains	380.00
Basic preparation of remains	180.00
	<b>\$3,120.00</b>

#### **Facilities & Equipment:**

Basic Facilities	735.00
Facilities for preparation/embalming/shelter	230.00
Facilities for ceremony	655.00
	<b>\$1,620.00</b>

#### **Automotive Equipment:**

Transfer Vehicle	225.00
Utility Vehicle	175.00
Administration Vehicle	225.00
Service Vehicle	275.00
	<b><u>\$900.00</u></b>

**TOTAL SERVICES AS ABOVE: \$5640.00**

## **OFFERING "B2" Remote Location Service**

### **TRADITIONAL FUNERAL WITH NO VISITATION HOURS**

**(Facilities available one hour prior to service)**

#### **Professional Services:**

Basic Professional Fee	795.00
Coordinating rites and ceremonies	1,175.00
Staff Services for a ceremony at a remote location	365.00
Documentation	300.00
Embalming of remains	380.00
Basic preparation of remains	180.00
	<b>\$3,195.00</b>

#### **Facilities & Equipment:**

Basic Facilities	735.00
Facilities for preparation/embalming/shelter	230.00
Equipment for ceremony at a remote location	580.00
	<b>\$1,545.00</b>

#### **Automotive Equipment:**

Transfer Vehicle	225.00
Utility Vehicle	175.00
Administration Vehicle	225.00
Service Vehicle	275.00
	<b><u>\$900.00</u></b>

**TOTAL SERVICES AS ABOVE:** **\$5640.00**

## **OFFERING "C"**

### **GRAVESIDE FUNERAL WITH NO VISITATION HOURS**

#### **Professional Services:**

Basic Professional Fee	795.00
Coordinating rites and ceremonies	550.00
Staff Services for ceremony	290.00
Documentation	300.00
Embalming of remains	380.00
Basic preparation of remains	180.00
	<b>\$2,495.00</b>

#### **Facilities & Equipment:**

Basic Facilities	735.00
Facilities for preparation/embalming/shelter	230.00
	<b>\$965.00</b>

#### **Automotive Equipment:**

Transfer Vehicle	225.00
Utility Vehicle	175.00
Administration Vehicle	225.00
Service Vehicle	275.00
	<b><u>\$900.00</u></b>

**TOTAL SERVICES AS ABOVE:                   \$ 4360.00**

## OFFERING "D"

### LIFE CELEBRATION CEREMONY

#### **Professional Services:**

Basic Professional Fee	795.00
Coordinating rites and ceremonies	550.00
Staff Services for ceremony	290.00
Documentation	300.00
Basic preparation of remains	180.00
	<b>\$2,115.00</b>

#### **Facilities & Equipment:**

Basic Facilities	735.00
Facilities for preparation/embalming/shelter	230.00
Facilities for ceremony	655.00
	<b>\$ 1,620.00</b>

#### **Automotive Equipment:**

Transfer Vehicle	225.00
Utility Vehicle	175.00
Administration Vehicle	225.00
Service Vehicle	275.00
	<b><u>\$900.00</u></b>

<b><u>TOTAL SERVICES AS ABOVE:</u></b>	<b><u>\$4635.00</u></b>
--	-------------------------



## OFFERING "D2" Remote Location Service

### LIFE CELEBRATION CEREMONY

#### **Professional Services:**

Basic Professional Fee	795.00
Coordinating rites and ceremonies	550.00
Staff Services for a ceremony at a remote location	365.00
Documentation	300.00
Basic preparation of remains	180.00
	<b>\$2,190.00</b>

#### **Facilities & Equipment:**

Basic Facilities	735.00
Facilities for preparation/embalming/shelter	230.00
Equipment for ceremony at a remote location	580.00
	<b>\$ 1,545.00</b>

#### **Automotive Equipment:**

Transfer Vehicle	225.00
Utility Vehicle	175.00
Administration Vehicle	225.00
Service Vehicle	275.00
	<b><u>\$900.00</u></b>

<b><u>TOTAL SERVICES AS ABOVE:</u></b>	<b><u>\$4635.00</u></b>
--	-------------------------

## OFFERING "E"

### LIFE CELEBRATION CEREMONY WITH VISITATION HOURS

#### **Professional Services:**

Basic Professional Fee	795.00
Coordinating rites and ceremonies	750.00
Staff services for ceremony	290.00
Documentation	300.00
Basic preparation of remains	180.00
Staff services for visitation	275.00
	<b>\$2,590.00</b>

#### **Facilities & Equipment:**

Basic Facilities	735.00
Facilities for preparation/embalming/shelter	230.00
Facilities for ceremony	655.00
Facilities for visitation	200.00
	<b>\$ 1,820.00</b>

#### **Automotive Equipment:**

Transfer Vehicle	225.00
Utility Vehicle	175.00
Administration Vehicle	225.00
Service Vehicle	275.00
	<b><u>\$900.00</u></b>

<b><u>TOTAL SERVICES AS ABOVE:</u></b>	<b><u>\$5310.00</u></b>
--	-------------------------

## OFFERING "E2" Remote Location Service

### LIFE CELEBRATION CEREMONY WITH VISITATION HOURS

#### **Professional Services:**

Basic Professional Fee	795.00
Coordinating rites and ceremonies	750.00
Staff services for ceremony at a remote location	365.00
Documentation	300.00
Basic preparation of remains	180.00
Staff services for visitation	175.00
	<b>\$2,665.00</b>

#### **Facilities & Equipment:**

Basic Facilities	735.00
Facilities for preparation/embalming/shelter	230.00
Equipment for ceremony at a remote location	580.00
Facilities for visitation	200.00
	<b>\$1,745.00</b>

#### **Automotive Equipment:**

Transfer Vehicle	225.00
Utility Vehicle	175.00
Administration Vehicle	225.00
Service Vehicle	275.00
	<b><u>\$900.00</u></b>

**TOTAL SERVICES AS ABOVE: \$5310.00**

## OFFERING "E3" Remote Location Service and Visiting

### LIFE CELEBRATION CEREMONY WITH VISITATION HOURS

#### Professional Services:

Basic Professional Fee	795.00
Coordinating rites and ceremonies	750.00
Staff Services for a ceremony at a remote location	365.00
Staff Services for visitation at a remote location	350.00
Documentation	300.00
Basic preparation of remains	180.00

**\$2,740.00**

#### Facilities & Equipment:

Basic Facilities	735.00
Facilities for preparation/embalming/shelter	230.00
Equipment for ceremony at a remote location	580.00
Equipment for visitation at a remote location (2 <sup>nd</sup> day)	125.00

**\$1,670.00**

#### Automotive Equipment:

Transfer Vehicle	225.00
Utility Vehicle	175.00
Administration Vehicle	225.00
Service Vehicle	275.00

**\$900.00**

**TOTAL SERVICES AS ABOVE:** **\$5310.00**



## OFFERING "F"

### BASIC TRANSFER SERVICE

#### **Professional Services:**

Funeral Director & Staff	795.00
Documentation	300.00
Basic preparation of remains	180.00
	<b>\$1,275.00</b>

#### **Facilities & Equipment:**

Basic Facilities	735.00
Facilities for preparation/embalming/shelter	230.00
	<b>\$965.00</b>

#### **Automotive Equipment:**

Transfer Vehicle	225.00
Utility Vehicle	175.00
Administration Vehicle	225.00

**\$625.00**

**TOTAL SERVICES AS ABOVE: \$ 2865.00**

## OFFERING "G"

### RECEIVING REMAINS FROM ANOTHER FUNERAL HOME WITH FUNERAL SERVICE AND TWO HOURS OF VISITATION PRIOR TO SERVICE

#### **Professional Services:**

Basic Professional Fee	795.00
Coordinating rites and ceremonies	1,175.00
Staff services for ceremony	290.00
Staff services for visitation	275.00
	<b>\$2,535.00</b>

#### **Facilities & Equipment:**

Basic Facilities	735.00
Facilities for preparation/embalming/shelter	230.00
Facilities for ceremony	655.00
Facilities for visitation	200.00
	<b>\$1,820.00</b>

#### **Automotive Equipment:**

Utility Vehicle	175.00
Administration Vehicle	225.00
Service Vehicle	275.00
	<b><u>\$675.00</u></b>

**TOTAL SERVICES AS ABOVE:** **\$ 5030.00**

## CASKETS

All Caskets listed are Adult Standard Shell Size. Oversize, youth and infant available as required.

**CASKET NAME & #:** "PARLIAMENT" #10-9600-00

**MANUFACTURER:** Victoriaville Caskets

**DESCRIPTION:** Solid Oak, hand polished Persian fawn finish,  
Beige velvet interior.

**PRICE:**..... \$6195.00



**CASKET NAME & #:** "WABASH" #05-5550-01

**MANUFACTURER:** Victoriaville Caskets

**DESCRIPTION:** Solid cherry, hand-rubbed high gloss finish  
Beige velvet interior.

**PRICE:**..... \$4695.00





**CASKET NAME & #:** "FOREST" #A-18-180  
**MANUFACTURER:** Victoriaville Caskets  
**DESCRIPTION:** 18 gauge steel, sealing,  
Tan crepe interior.  
\*\*Not Suitable for cremation

**PRICE:**..... \$3795.00



**CASKET NAME & #:** "MAXIMA" #10-5710-10  
**MANUFACTURER:** Victoriaville Caskets  
**DESCRIPTION:** Solid oak, satin finish, insert cap panel,  
interchangeable corners, tan crepe interior.

**PRICE:**..... \$3795.00





**CASKET NAME & #:** "NORTHGATE" #10-5756-00  
**MANUFACTURER:** Victoriaville Caskets  
**DESCRIPTION:** Solid oak, satin finish,  
Medium tone crepe interior.

**PRICE:**.....

**\$3795.00**



**CASKET NAME & #:** "DOMINION" #20-5610-01  
**MANUFACTURER:** Victoriaville Caskets  
**DESCRIPTION:** Solid maple, mahogany finish,  
Medium tone crepe interior.

**PRICE:**.....

**\$3795.00**





**CASKET NAME & #:** "FAIRHOLME" #10-700-01  
**MANUFACTURER:** Victoriaville Caskets  
**DESCRIPTION:** Solid oak, octagon design, high gloss finish  
Pink crepe interior with embroidered single rose .

**PRICE:**.....

**\$3595.00**



**CASKET NAME & #:** "BRIGHTON" #52-8012-02  
**MANUFACTURER:** Victoriaville Caskets  
**DESCRIPTION:** Solid Poplar, bronze satin,  
Interchangeable interior

**PRICE:**.....

**\$3595.00**



CASKET NAME & #: "CARNABY" #50-5610-112  
MANUFACTURER: Victoriaville Caskets  
DESCRIPTION: Solid Poplar, vantablack satin finish,  
beige basket weave interior

PRICE:..... \$3495.00



CASKET NAME & #: "LOGICA" #50-5134-01  
MANUFACTURER: Victoriaville Caskets  
DESCRIPTION: Solid poplar, water-based rustic brown satin finish  
100% natural cotton interior

PRICE:..... \$3395.00



LOGICA  
100% NATURAL COTTON  
HARDWOOD  
50-5134-01



**CASKET NAME & #:** "DIGBY" #32-62-12  
**MANUFACTURER:** Victoriaville Caskets  
**DESCRIPTION:** Quality Appalachian ash & veneer construction  
Gloss finish, Tan crepe interior.

**PRICE:**..... **\$2995.00**



DIGBY PC  
BEIGE CREPE  
WHITE ASH  
32-62-12

**CASKET NAME & #:** "AUSTIN" #52-34-02  
**MANUFACTURER:** Victoriaville Caskets  
**DESCRIPTION:** Quality poplar & veneer construction  
Satin finish, Beige crepe interior.

**PRICE:**..... **\$2695.00**



AUSTIN PC  
BEIGE CREPE  
POPLAR  
52-34-02

**CASKET NAME & #:** "NATURA" #51-5195-01  
**MANUFACTURER:** Victoriaville Caskets  
**DESCRIPTION:** Solid Poplar, natural finish  
100% natural cotton interior

**PRICE:**..... **\$2595.00**



NATURA  
100% NATURAL COTTON  
HARDWOOD  
51-5175-01

**CASKET NAME & #:** "ALFRED" #52-417-102  
**MANUFACTURER:** Victoriaville Caskets  
**DESCRIPTION:** Veneer sided poplar shell with solid poplar components  
Titan color treatment, satin finish, beige crepe interior

**PRICE:**..... **\$2295.00**



ALFRED  
VENEER SIDED  
POPULAR  
52-417-102



**CASKET NAME & #:** "FERGUS" #52-417-103  
**MANUFACTURER:** Victoriaville Caskets  
**DESCRIPTION:** Veneer sided poplar shell with solid poplar components  
 Rustic brown color treatment, satin finish, beige crepe interior  
**PRICE:**..... \$2295.00



**CASKET NAME & #:** "NORTHGATE CEREMONIAL" #10-5756-03  
**MANUFACTURER:** Victoriaville Caskets  
**DESCRIPTION:** Solid oak, satin finish,  
 Medium tone crepe interior.  
 Includes removable plywood cremation insert.  
**PRICE:**..... \$2090.00



NORTHGATE PC  
 TAN CREPE  
 SOLID OAK  
 10-5756-03  
 10-5756-03 27"  
 10-5756-03 30"  
 10-5756-03 33"

**CASKET NAME & #:** "MOKA" #M-25B-3D  
**MANUFACTURER:** Victoriaville Caskets  
**DESCRIPTION:** Constructed of pressboard, Veneer finish,  
Beige crepe interior, Wood bar handles.

**PRICE:**.....

**\$1895.00**



MOKA S PC  
BEIGE CREPE  
WOODGRAIN  
M-25E-3D

**CASKET NAME & #:** "DIAMOND" #50-479-01  
**MANUFACTURER:** Victoriaville Caskets  
**DESCRIPTION:** Solid Poplar,  
White silk interior, Wood bar handles.

**PRICE:**.....

**\$1565.00**



DIAMOND PC  
WHITE CREPE  
SOLID POPLAR  
50-479-01



**CASKET NAME & #:** "TOLEDO" #90-55-01  
**MANUFACTURER:** Victoriaville Caskets  
**DESCRIPTION:** Constructed of presswood material,  
Grey cloth, raised top, White satin interior.

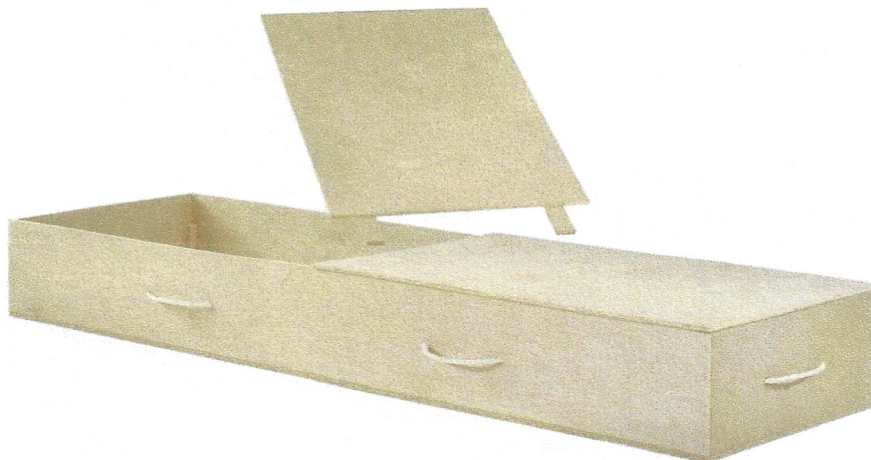
**PRICE:**..... **\$1195.00**



TOLEDO PC  
WHITE SILK  
BLUE PLAIN  
90-55-01

**CASKET NAME & #:** "GLENCOVE" #CR879-00033-CC  
**MANUFACTURER:** Victoriaville Caskets  
**DESCRIPTION:** Select wood, natural maple woodgrain  
Basic lining and pillow, rope carriers

**PRICE:**..... **\$985.00**



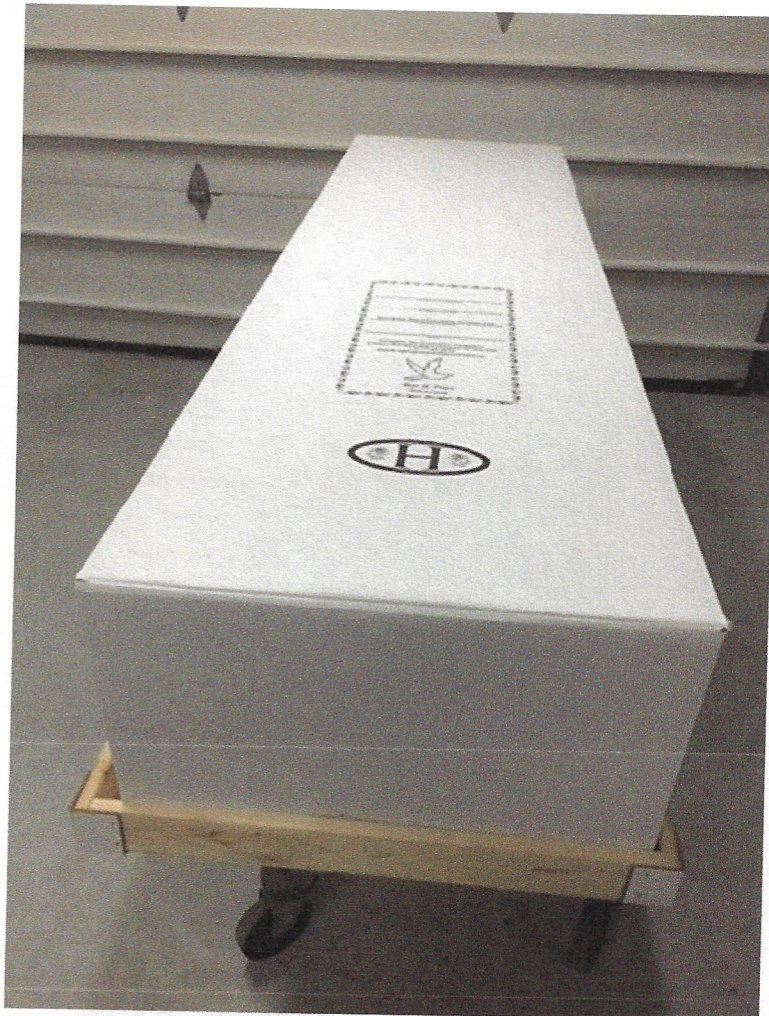
**CASKET NAME & #:** "Basic"

**MANUFACTURER:** Georgian Bay Cremation Services

**DESCRIPTION:** Constructed of pressboard material,  
No interior or exterior finish

**PRICE:** .....

**\$395.00**





## CASKET VAULTS

### GRASS & DEVICE

When the vault company has to supply grass and device there is a charge of **\$80.00**.

### HABERER INTERMENT SERVICES

#### Reflection

Interior has a black polystyrene liner and stainless steel plating.

Exterior can be finished in black/silver OR white/pink

**\$3465.00**



#### Trilogy

Interior is reinforced steel and lined with polystyrene.

Exterior is white with gold accents

**\$2445.00**

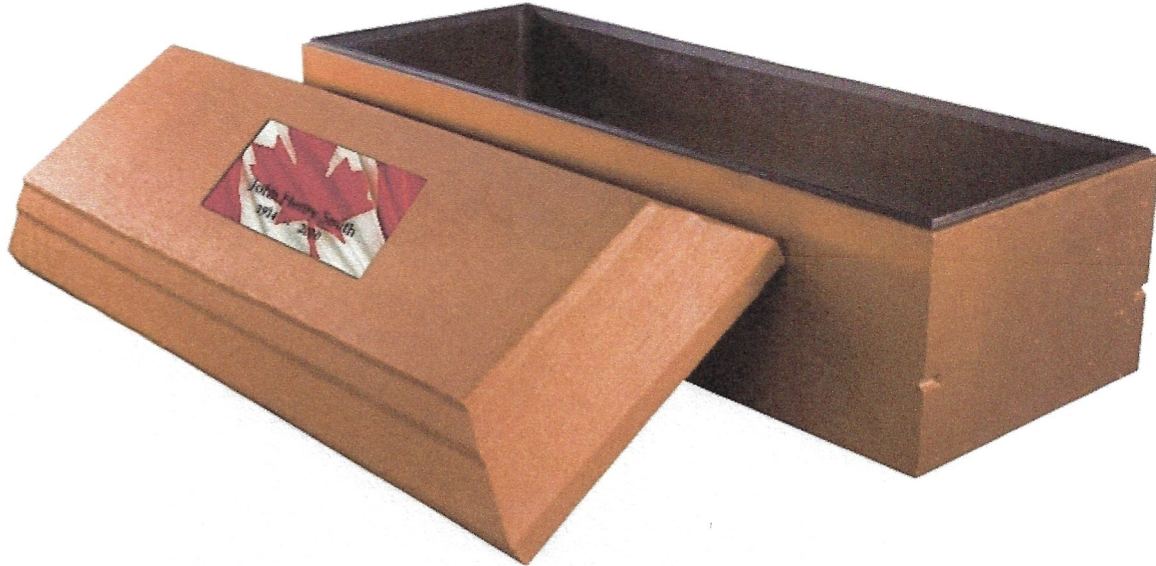




**Estate**

Interior is reinforced with steel.  
Exterior is painted copper.

**\$1815.00**



**Basic Vault Topseal III**

No lining, reinforced concrete  
Rubber sealant between base and lid  
Exterior painted with gold concrete sealant

**\$1410.00**



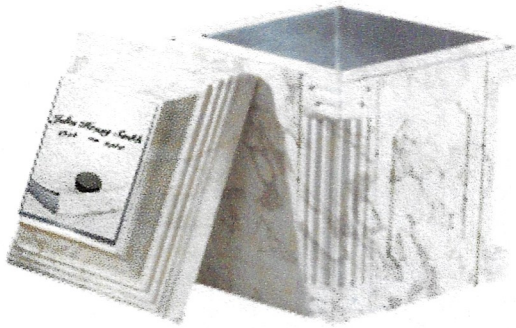
## URN VAULTS

### HABERER INTERMENT SERVICES

#### **Aegean Elite**

Lined interior and exterior with polystyrene.  
Interior lined with stainless steel plating.  
Exterior encased with simulated stone-white marble  
Stainless steel carapace on vault lid

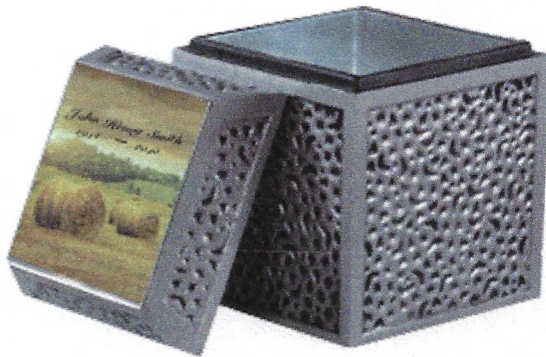
**\$1295.00**



#### **Reflection**

Lined with polystyrene and stainless steel plating  
Painted black/silver OR white/pink  
Stainless steel carapace on the vault lid.

**\$1195.00**

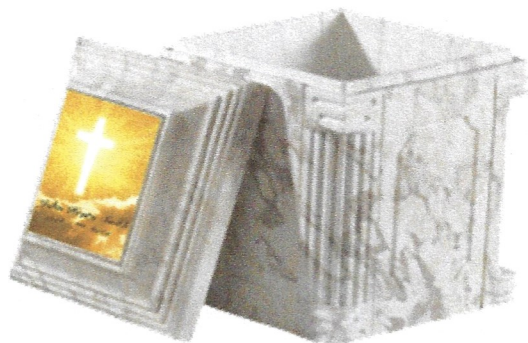


**Aegean**

Interior lined with polystyrene.

Exterior encased in a premium white simulated stone polystyrene.  
4 corner columns

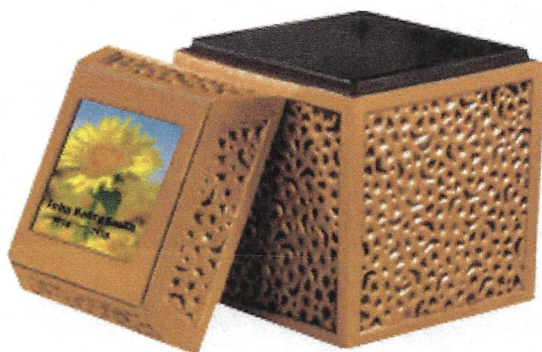
**\$875.00**

**Harmony**

Lined with molded polystyrene

Exterior painted with copper concrete sealant  
and black accents.

**\$695.00**





## **TRIBUTE SUPPLIES**

Tribute supplies will be customized to the family's directions immediately following arrangements.

Custom packaging available on request, and will be quoted as designed.

The following packages all include a register book, 100 custom memorial cards, 50 thank you cards.

<b>Custom Tribute Package</b>	<b>\$350.00</b>
-------------------------------	-----------------

<b>PHOTO MEMORY BOOK &amp; DVD</b>	<b>\$295.00</b>
------------------------------------	-----------------

Includes Memorial book and DVD set to music

## **FLOWERS**

Custom designed floral tributes available and quoted upon request, starting at;  
**\$50.00**

<b>VISUAL EQUIPMENT</b>	<b>\$100.00</b>
-------------------------	-----------------

LCD monitor for the display of family produced videos. This fee is included in the purchase of a memorial video.

## **STAFF AND PROFESSIONAL SERVICES**

<b>Extended Funeral Care</b>	<b>\$550.00</b>
------------------------------	-----------------

Assistance with completion of application for Canada Pension Benefits, cancellation of Health Card, Driver's Licence, SIN, Credit Cards, ATM Cards, and Passport, Pension and Insurance claims, and any other necessary items as needed.

<b>Hairdressing</b>	<b>\$150.00</b>
---------------------	-----------------

This includes styling and trim as needed. Does not include full cut and colouring, this cost will be discussed on a custom basis.

<b>Priority Cremation</b>	<b>\$150.00</b>
---------------------------	-----------------

Availability and timing will be discussed at time of need.

<b>Website and Internet Funeral Notice Composition</b>	<b>\$50.00</b>
--	----------------

Composing and placing of Funeral Notice on our website, Canada Obits, and Facebook as requested.

<b>Single Use Transfer equipment</b>	<b>\$150.00</b>
--------------------------------------	-----------------

**Professional Restorative Procedures****\$100.00 per hour**

In some circumstances, additional restorative efforts beyond those captured in the standard embalming procedure are necessary to enhance the appearance of the deceased. In such cases, the funeral director will discuss the available options and their cost. Professional restorative procedures will be charged per hour.

**Scattering of cremated remains**

We will scatter cremated remains in accordance with Ontario and municipal laws and by-laws on land. Fees for scattering from a plane or boat will be in addition to this charge and will be discussed upon request.

**\$350.00****Catering Services**

Catering is available in the funeral home or at a remote location. A separate Catering Menu is available, and begins at a cost of **\$17.00** per person. Catering with alcohol is available and begins at **\$22.00** per person. Additional facility cost and staffing costs are required for catering with alcohol.

**Removal of pacemaker or implant**

The removal of a pacemaker or implant will be carried out by a licensed professional.

**\$150.00****Environmental Service Surcharge**

A charge for biohazard materials and disposal costs will be made in some circumstances; our professional staff will discuss this issue with you.

**Ship Out Services Charge**

If remains are being shipped to another location, we will arrange for transport and all necessary paperwork. This cost will be calculated and discussed on a custom basis.

**Receiving Cremated Remains from another Establishment**

Cremated remains are to be picked up within 7 days

Each additional 7 days period is \$150.00

**\$150.00****Refundable Deposit for Cremated Remains**

When human remains are to be cremated, a refundable deposit will be required to be paid. If the cremated remains are not claimed within one year of the cremation, the deposit may be used to inter the cremated remains in common ground. If the cremated remains are claimed before they are interred, the deposit will be refunded.

**\$350.00****Temporary Storage of Cremated Remains**

Temporary storage of cremated remains is available at the funeral home, and will be charged after 30 days on a monthly basis.

**\$150.00**



### **Additional Custom Services**

Any and all other services or merchandise requested by the purchaser will be discussed, quoted, and agreed upon by all parties prior to engagement.

### **MISCELLANEOUS CHARGES**

**Single use residential removal kit**  
**\$150.00**

**Each additional video presentation (Book and DVD)**  
**\$100.00**

**Additional DVD's only**  
**\$25.00**

**Additional Laminates**  
**\$10.00**

**Special Occasion Permit**  
**At Cost**

**Skelton Memorials**  
**At Cost**

**Administration and Attendance for Interment**  
**(other than at time of funeral – i.e. Spring Interments, Cremation Interments)**  
**\$250.00**

**Additional rate for Saturday Interments**  
**\$250.00**

**Delay of Service**  
**\$250.00 per 7 day period**

### **DISBURSEMENTS**

Disbursements are items arranged for and possibly paid for on your behalf by the Funeral Home. You are expected to pay for these items at the time the contract is entered into. The following are some items that are often identified as disbursements.

Coroner's fee - this is a fee charged by the coroner for issuing a certificate that allows cremation to take place. The fee is set by the Chief Coroner for Ontario.

Clergy honorarium - this is an amount paid to the clergy for their services. In some cases the amount is set by the clergy, in others it is an amount to be determined by you.

Newspaper or radio notices - these are charges for death notices placed in newspapers or radio or other media outlets.

Cemetery fees – will be set by the individual cemetery, or municipality.

Crematorium fee – will be set by the individual crematorium.

Registration Fee – as set out by individual municipality

Other disbursements will be discussed as required.

## **Payment, Financing and Funding**

We are proud to offer various payment, funding and financing options to our clients.

### **Payment**

Unless otherwise specified, **payment in full is due within 15 days of signing the contract.** Payment may be made by cash, cheque, debit, and most major credit cards. Beyond the allotted time, any balance owing will bear interest at a rate of 24% per annum, calculated monthly, from the due date until paid in full.

### **Funding**

For your convenience, we offer two funding options when prepaying services or supplies. When prepaying, you pay for the services and supplies today and the money will be used to pay for the services and supplies when they are delivered at the time of death.

**Trust:** You may pay the money directly to us and we will place it in trust, where it will accrue interest until the contract is fulfilled (when the services and supplies are delivered) or the contract is cancelled.

**Insurance:** You may purchase an insurance contract where the proceeds of the insurance contract will be used to pay for the services or supplies at the time they are delivered or the contract is cancelled.

Additional information about our payment, financing and funding options is available upon request.

We are proudly affiliated with:

Huron Shores Cremation Services  
506 Mill Street, Port Elgin, ON N0H 2C0

Tannahill Funeral Home  
1178 4<sup>th</sup> Ave West, Owen Sound ON N4K 4W5

Breckenridge-Ashcroft Funeral Home  
241 9<sup>th</sup> Street, West, Owen Sound ON N4K 3N7

**Offering:** \_\_\_\_\_

**Casket:** \_\_\_\_\_

**Vault:** \_\_\_\_\_

**Urn:** \_\_\_\_\_

**Milage Charges:** \_\_\_\_\_

**Stationary Pkg:** \_\_\_\_\_

**Video Presentation:** \_\_\_\_\_

**Luncheon:** \_\_\_\_\_

**Reception Suite:** \_\_\_\_\_

**Hostess:** \_\_\_\_\_

**Flowers:** \_\_\_\_\_

**HST:** \_\_\_\_\_

**Subtotal:** \_\_\_\_\_

**Media Notices:** \_\_\_\_\_

**Cemetery Charges:** \_\_\_\_\_

**Crematorium Charges:** \_\_\_\_\_

**Coroner:** \_\_\_\_\_

**Clergy Honorarium:** \_\_\_\_\_

**Organist:** \_\_\_\_\_

**HST:** \_\_\_\_\_

**Subtotal:** \_\_\_\_\_

**TOTAL:** \_\_\_\_\_



## **FUNERAL HOMES**



510 Mill Street, Port Elgin, Ontario  
519-832-2222



1178 4<sup>th</sup> Ave West, Owen Sound, Ontario  
519-376-3710

## **TRANSFER SERVICE**



506 Mill Street, Port Elgin, Ontario  
888-982-8175

*Brown Family Funeral Homes  
Proudly Owned and Operated by  
Taylor Brown and Melanie Leclair*