

LAKELAND
FUNERAL &
CREMATION CENTRE



**19 Moose Road
Lindsay, Ontario
K9V 0A2**

705-324-1988 1-888-299-9058

www.lakelandfuneralcentre.com

A Division of Little Lake Cemetery Company

Person in charge of day-to-day operations: Don Finlayson

Price List Effective: April 18, 2024



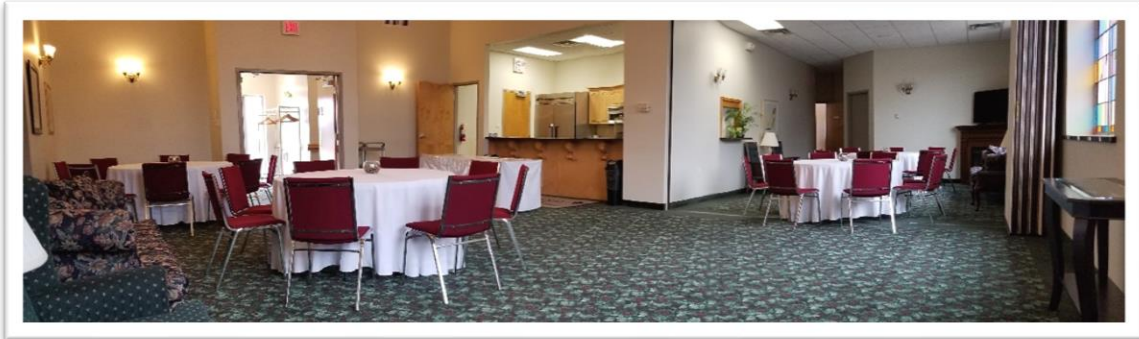
Welcome to the **Lakeland Funeral & Cremation Centre**, a facility for Lindsay and the surrounding area that has elevated the standards of funeral and reception facilities, while ensuring you receive the highest level of professionalism and compassion.

The Lakeland Funeral & Cremation Centre, formerly Parker Funeral Home & Cremation Centre, was purchased in the fall of 2015 by the Little Lake Cemetery Company of Peterborough. Little Lake Cemetery has over 160 years of history in the Kawarthas and has continued to operate as a **non-profit** company with the focus of serving families in all aspects of the bereavement journey. Little Lake Cemetery Company strives to ensure every life is honoured, celebrated and remembered with respect and dignity.

Our non-denominational **Chapel** and Tribute Centre can comfortably accommodate up to 250 people, while still maintaining a comfortable atmosphere for smaller gatherings.



In addition, the **Reception Centre** can cater to all needs, accommodating both large and small gatherings. By recognizing the needs and wishes of our families, our reception facilities are fully equipped to ensure all the fine details are managed. This allows families to use the reception facility as the sole way of celebrating their loved one's life; or provide a post funeral and memorial reception.



From the moment we are called upon, our **non-commissioned staff** will be there to guide you through every aspect of this difficult process, ensuring the services are as personalized and unique as your loved one's life.

Explanation of Our Services

Co-ordinating Activities, Rites, Ceremonies

- Professional Consultation with licensed personnel, including, but not limited to, expert advice on options to meet your needs \$925.00
- Co-ordination of funeral and memorial service details with clergy, musicians, cemetery and/or crematorium and organization of vehicles and staff.
- Ordering of caskets, urns, flowers, catering or other products from suppliers Immediate
- Preparation and placement of newspaper death notices Cremation
- Includes usage of telephone, fax, computer and photocopier as required \$425.00
- Administration includes accounting and maintenance of the file
- 24 hour availability of a funeral director by phone

Documentation - Permits, Forms, etc.

- Completion and filing of all documents necessary to carry out the services and supplies requested, including, but not limited to, death registration, burial permit, coroner's certificate for cremation, documentation necessary to ship the body out of the country \$230.00
- Provision of Proofs of Death issued by Lakeland Funeral Centre (our proofs of death are usually accepted for most estate settlement purposes, but sometimes a provincial "Death Certificate" will be necessary and is available from the Office of the Registrar General)

Transport Deceased - Initial 40 km

- Transfer of the deceased from the place of death (Residence, Nursing Home or Hospital) to our Funeral Home holding facility within a 40 km radius of the establishment \$275.00
- Additional mileage charge after 40 km is \$2.75 / km (one way) for all vehicles

Embalming of Remains (Requires Facilities for Preparation/ Embalming/Shelter)

(This charge is in addition to the basic preparation of remains)

\$495.00

- Embalming is the disinfection, restoration and temporary preservation of the deceased including bathing, dressing, casketing and cosmetics as required
- Embalming is not legally required, but may be recommended to preserve the deceased between the time of death and the visitation or disposition of the deceased.
- Professional Hairdresser when required at a cost of \$60.

Basic Preparations of Remains

(Requires Facilities for Preparation / Embalming / Shelter)

\$95.00

- The preparation may include when necessary, bathing, dressing, casketing and setting of facial features for identification or immediate viewing purposes without embalming

Applicable taxes are in addition to all prices.

Explanation of Our Services (cont'd)

Staff Services for Visitation <ul style="list-style-type: none"> Includes receiving and arranging of floral tributes, room set-up, staff assistance and supervision during visitation, co-ordination of donations and other duties associating with certain rites for up to 4 hours 	<u>Up to 4 hours</u> \$400.00 <u>Up to 2 hours</u> \$250.00
Staff Services for Ceremony <ul style="list-style-type: none"> Includes preparation and set up of chapel, staff support and direction of services, as required and co-ordination of donations 	\$575.00
Facilities for Preparation/ Embalming/ Shelter <ul style="list-style-type: none"> Facilities used to prepare, embalm and shelter the body 	\$290.00
Facilities for Visitation (requires Staff Services for Visitation) <ul style="list-style-type: none"> Use of Room for up to 4 hours prior to the service for the informal gathering of family to receive guests and offer condolences. Complimentary coffee and tea. May include: all furnishings, flower and picture stands, religious equipment and audio/visual equipment 	\$375.00
Facilities for Ceremony (requires Staff Services for Ceremony) <ul style="list-style-type: none"> Rental of the chapel for up to 2 hours on the day of the service. May include: all furnishings, audio equipment, flower stands, religious equipment and memory boards 	\$375.00
Exclusivity Fee <ul style="list-style-type: none"> May be applied when family wishes to have exclusivity of the facility during their service or to book their service outside of the staff designated times on Saturdays. 	\$800.00
Administration Vehicle (within 40 km) <ul style="list-style-type: none"> This vehicle is used by the Funeral Director (and Minister if present) to lead the procession from the Chapel or other venue to the cemetery or crematorium To deliver documents for death registration and other duties as required 	\$150.00
Funeral Coach or Hearse <ul style="list-style-type: none"> The Hearse is required for the transportation of the deceased from the chapel or other venue to any cemetery or crematorium (within 40 km) 	\$450.00
Transfer / Service Vehicle (within 40 km) <ul style="list-style-type: none"> This vehicle is required to transfer the deceased from place of death to the funeral home 	\$205.00
Deferral or Holiday Fee <ul style="list-style-type: none"> This fee may be applied when services are deferred by more than four days. Includes ongoing communication, coordination and when required care of the deceased 	\$350.00
General Service Areas	\$300.00

Applicable taxes are in addition to all prices.

Explanation of Our Services (cont'd)

Service at Other Location <ul style="list-style-type: none">Includes preparation and set up of facility, equipment such as flower stands, picture boards, memorial table or casket equipment	\$450.00
Family Identification (Requires Northern Chaise Viewer) <ul style="list-style-type: none">Use of visitation room for immediate family (10 persons) for 30 minutes. Includes dressing and setting features, no embalming	\$175.00
Reception Facility (Requires catering provided by Lakeland at an additional cost OR Professional Caterer) <ul style="list-style-type: none">Use of reception room facilities, dishes, complimentary tea, coffee, water and reception hostess for up to 2 hours following a funeral or memorial service in the chapel.	\$550.00
Reception Facility - Chapel (Requires catering provided by Lakeland at an additional cost OR Professional Caterer) <ul style="list-style-type: none">Use of the chapel for a reception, dishes, complimentary tea, coffee, water and reception hostess for up to 2 hours. (requires Package: Service D)	\$725.00
Storage of Deceased <ul style="list-style-type: none">Rate per day after five days	\$50.00
Refundable Deposit for Cremated Remains <ul style="list-style-type: none">When human remains are to be cremated, a refundable deposit will be required to be paid. If the cremated remains are not claimed within one year of the cremation, the deposit may be used to inter the cremated remains in common ground. If the cremated remains are claimed before they are interred, the deposit will be refunded	\$350.00
Filling of Urns/Keepsakes Not Purchased from Lakeland <ul style="list-style-type: none">Fee for filling Urn/Keepsakes not purchased from LakelandFirst Urn/Keepsake/Jewelry: \$50Each additional: \$15 <p>*Note that Lakeland does not accept any liability for damage of items or their suitability for holding cremated remains that are not purchased from Lakeland.</p>	\$50.00
Removal of Pacemaker or Implant <ul style="list-style-type: none">The removal of a pacemaker or implant will be carried out by a licensed professional. For cremation only.	\$95.00
Body Pouch <ul style="list-style-type: none">May be required when death occurs at residence, nursing home and situations where a pouch has not already been provided	\$65.00

Applicable taxes are in addition to all prices.

Explanation of Our Services (cont'd)

Witness of Cremation at Crematorium <ul style="list-style-type: none"> Funeral Director guidance and supervision at Crematorium 	\$250.00
Additional Staff Person <ul style="list-style-type: none"> Extraordinary circumstances (per additional person, 3 hour period) 	\$100.00
Stationery Package By Gravure Craft / Commercial Press <ul style="list-style-type: none"> Customized Register Book, Thank You Cards, Personalized Memorial Cards 	\$310.00
Additional Memorial Cards per card	\$2.00
Webcasting	\$295.00
Catering (Requires Reception Facility) <ul style="list-style-type: none"> Classic Includes a variety of gourmet sandwiches (egg salad & assorted meats) on assorted buns and breads, vegetables & dip, assorted dessert squares, pickles & olives. Complimentary tea, coffee, water & iced tea. Deluxe Includes everything in the Classic package plus fruit & yogurt dip, assorted cheeses & crackers. Premium Includes everything in the Classic & Deluxe packages plus pumpernickel bread & dip & antipasto assorted cured meats. Fruit & Desserts only Complimentary tea, coffee, water & iced tea. 	Classic \$15.00/ person Deluxe \$17.00/ person Premium \$19.00/ person Fruit & Dessert \$11.00/person
Beverage Service <ul style="list-style-type: none"> May include when necessary the rental of beverage glasses, one smart server, retrieving beverages and Special Occasion Permit All alcohol is an additional cost. 	\$500.00
Aftercare Support <ul style="list-style-type: none"> This includes assistance through our Aftercare Program to complete and organize government letters and applications (CPP Death Benefit, Survivor Benefit, cancellation of SIN, driver's license, health card, accessible parking permit, passport etc. and notifying the Credit Bureau). Includes organizational folder with a supporting private website as well as an information booklet with template letters and phone numbers to both government and private institutions and estate checklists. 	\$350.00

Applicable taxes are in addition to all prices.



FUNERAL PACKAGES

	Service A	Service B	Service C	Service D	Service E	Service F
Co-ordination Activities, Rites and Ceremonies	\$ 925.00	925.00	925.00	925.00	925.00	425.00
Documentation - permits, forms etc.	\$ 230.00	230.00	230.00	230.00	230.00	230.00
Transport Deceased - initial (within 40 km)	\$ 275.00	275.00	275.00	275.00	275.00	275.00
Staff for Services: Funeral / Memorial / Memorial Reception / Graveside Committal	\$ 575.00	575.00	575.00	575.00	575.00	N/A
Staff Services for Visitation	\$ 400.00	250.00	250.00	N/A	N/A	N/A
Facilities for Visitation	\$ 375.00	N/A	N/A	N/A	N/A	N/A
Facilities for Ceremony	\$ 375.00	375.00	375.00	Reception Facility 550.00	N/A	N/A
Facilities (Prepare / Embalm / Shelter Remains)	\$ 290.00	290.00	290.00	290.00	290.00	290.00
Embalming of Deceased	\$ 495.00	495.00	N/A	N/A	N/A	N/A
Basic Preparation of Deceased	\$ 95.00	95.00	95.00	95.00	95.00	95.00
Automobiles:						
Funeral Coach	\$ 450.00	450.00	N/A	N/A	N/A	N/A
Administration Car	\$ 150.00	150.00	150.00	150.00	150.00	150.00
Transfer / Service Vehicle (Deceased Transfer)	\$ 205.00	205.00	205.00	205.00	205.00	205.00
Sub-Total	\$ 4,840.00	4,315.00	3,370.00	3,295.00	2,745.00	1,670.00

Applicable taxes are in addition to all prices.

with Funeral Coach
\$3,195.00

A VISITATION PERIOD IS A MAXIMUM OF TWO HOURS

- SERVICE A:** Two visitation periods with funeral service the following day
SERVICE B: One visitation period with funeral service the same day
SERVICE C: One memorial visitation period with service the same day
SERVICE D: Memorial Reception - two hours in Reception Room (catering cost extra)
SERVICE E: Graveside service with casket / urn burial with no visitation
SERVICE F: Immediate cremation with no visitation or service

Caskets

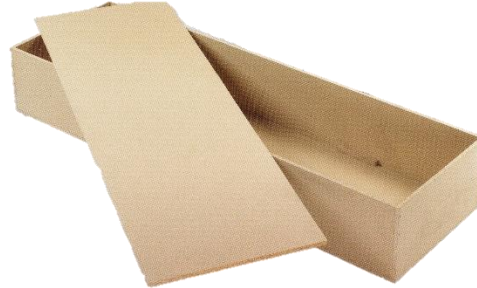
Applicable taxes are in addition to all prices

* Identifies which caskets are NOT suitable for cremation.

Please note the rental casket has been used before, and may be used again and are for cremation only. A new rental liner and interior is used for each deceased. Please note in some cases a larger casket is required. A Funeral Director will consult with the family at the time of need.

Northern #10 Particle Board Cremation Casket

Sealed Bottom Panel
No Interior
Remains up to 225 pounds
Adult 75" x 22" x 12.5"



\$405.00

Northern #10 Particle Board Cremation Casket Oversize

Sealed Bottom Panel
No Interior
Remains 225 - 300 pounds
Adult 81" x 27.5" x 16"



\$605.00

Northern #102 Eden Enviro

Pine Construction,
Softwood 4 Handles,
Natural Finish,
Cloth Interior,
Remains up to 225 pounds
Adult 77" x 23" x 13"



\$820.00

Northern Chaise Viewer

Rental includes insert - reconstructed cardboard
Cloth Interior
Remains up to 350 pounds
Adult 75" x 22" x 12.5"
***Includes up to 30 minutes private family viewing
(10 people max)***



\$995.00

Northern #70

Blue Cloth Covering
Satin Interior
Metal Handles
Adult 84" x 31" x 24"



\$1,540.00

Northern #116 Eden Enviro

Natural Satin Finish
Natural Cotton Interior
Woodbar Handles
Adult 77" x 25" x 17"



\$1,640.00

Northern #528 Autumn Walnut

Solid Poplar
Satin Amber Finish
Rosetan Crepe Interior
Metal Handles
Adult 77" x 22" x 15"
Plus Size Available



\$1,795.00

Northern #526M Norway

Poplar Veneer
Tan Interior
Adult 80" x 29.5" x 20"



\$2,035.00

Northern #707 Homestead

Rental / Purchase
Rental includes insert - Ash Construction
Maple
Algonquin Mist Finish
Rosetan Crepe Interior
Woodbar Handles
Adult 83" x 29" x 23"



Rental
\$1,995.00

Purchase
\$3,290.00

Northern #228 Carter

Poplar Construction
Crepe Interior
Solid Woodbar Handles
Natural, Mahogany (shown),
Light Walnut or Walnut Finish
Adult 79.5" x 26" x 21"



\$2,210.00

Northern #444 Glentay

Ash
Satin Interior
Woodbar Handles
Adult 80" x 29.5" x 20"



\$2,260.00

Northern #405 Delta

Pine
Minwax Portland Satin Finish
Rosetan Crepe Interior
Wood Lug Handles
Adult 83" x 29" x 23"



\$2,310.00

Northern #702 Cameron

Solid Maple
Velvet Interior
Woodbar Handles
Adult 82" x 22" x 29"



\$2,520.00

Northern #632 Minto

Poplar Veneer
Rubbed Walnut Finish
Rosetan Crepe Interior
Woodbar Handles
Adult 80" x 20" x 27"



\$2,675.00

Northern #32 Antique

Ash Veneer
Rosetan Crepe Interior
Woodbar Handles
Adult 80" x 28" x 22"



\$2,775.00

Northern #303 Camo

Ash Veneer
Butternut with Realtree® Finish
Realtree® & Rosetan Crepe Interior
Woodbar Handles
Adult 80" x 28" x 22"



\$3,085.00

Northern #500 Ladies Rosehall

Oak
K-Panel
Rose Bouquet Pink Crepe Interior
Woodbar Handles
Adult 81" x 27" x 21.5"



\$3,290.00

Northern #520 Vista

Oak
Perfection Cut
Blended Rub Stain
Rosetan Crepe Interior
Woodbar Handles
Adult 80"x 28"x 22"



\$3,290.00

Burial Vaults

Applicable taxes are in addition to all prices.

Holiday and Weekend surcharge for Vault Delivery starting at \$185.00

Cemetery Equipment: Included casket lowering devices and artificial greens setup (when there is no outer container purchased) \$550.00.

<p>Crypt (not considered a vault) by Kawartha Vault Non-reinforced Porous thin-walled concrete meant to maintain the integrity of the grave only</p>		<p>\$1,195.00</p>
<p>Standard Liner (not considered a vault) by Kawartha Vault Non-reinforced porous concrete liner meant to maintain the integrity of the grave only</p>		<p>\$1,395.00</p>
<p>Monticello / Montclair By Kawartha Vault / Century (WV30) 2,600 lbs, 65-year warranty, Finest single-reinforced burial vault (concrete / plastic). High-strength concrete with premium ABS Marbelon™ plastic-reinforced cover and base (2nd generation plastic) and has 4 times the impact strength of the Strentex® liner. Rich look of polished marble, ABS Plastic carapace. Personalization choice available.</p>		<p>\$1,695.00</p>
<p>Venetian / Cathedral By Kawartha Vault 2,600 lbs, 65-year warrant, Finest single-reinforced burial vault, High-strength concrete with high-impact plastic and a reinforced cover and base, Inner liner available in marbling or solid. Personalization choices available.</p>		<p>\$2,295.00</p>
<p>Stainless Steel / Cameo Rose Triune by Century (SST30, CR30) 3,000 lbs, 75-year warranty, Mid-line burial vault, Double reinforced unit (concrete/plastic/stainless steel), Cover and base reinforced with high-impact ABS plastic (2nd generation plastic), strong, corrosion-resistant stainless steel, Brilliant stainless-steel carapace. Includes Memorialization Plus™ brass capsule, special emblems and customized nameplate, Personalization available</p>		<p>Stainless Steel \$3,195.00 Cameo Rose \$3,195.00</p>
<p>Copper / Bronze Triune by Century (CT30, BT30) 3,000 lbs, 75-year warranty, Double-reinforced burial vault (concrete/plastic/copper or bronze), High-strength concrete with copper/bronze (one of the finest metals used in burial) and high-impact ABS plastic, (2nd generation plastic), Cover and base reinforced with non-rusting copper/bronze, Rich copper/bronze carapace, Includes Memorialization Plus™ brass capsule, special emblems and customized nameplate, Custom Legacy Series personalization is available as well as standard personalization options</p>		<p>Bronze \$3,795.00 Copper \$3,995.00</p>

Urn Vaults

Applicable taxes are in addition to all prices.

Sand Spun Urn Vault

by Eckles

#027

Basic entry level urn vault

Size: 14-1/2" W x 9" D x 9" H

Interior Dimensions: 12" W x 8" D x 8" H



\$395.00

Universal Urn Vault

by Century

Basic Protection products are single-reinforced and feature concrete construction combined with plastic-reinforcement for strength.



\$820.00

Monticello Urn Vault

by Century

Basic Protection products are single-reinforced and feature concrete construction combined with plastic-reinforcement for strength.



\$1,080.00

Cameo / Stainless Steel Triune Urn Vault

by Century

High-strength concrete, stainless steel, and high-impact ABS Trilon® thermoplastic combine for durable inner protection in these double-reinforced products. All triune series burial vaults can be personalized with Wilbert Legacy Series' prints or Life's Reflections' appliques.



\$1,230.00

Urns

Applicable taxes are in addition to all prices.

Scattering Tube

- PI- _____
- Various Images
- Large
- Cardboard
- by Commemorate Group
- 12.6" x 5.1"



\$175.00

Commemorate Group Speckled

- Emerald A213
- Indigo A212
- Brass
- 10.75"x5.75"x5.75"



\$295.00

North Urn 202

- Various Standard Images
- Rosewood •Cherry •Maple •Ash
- Amber •Poplar •Dark Walnut •Golden Oak
- 9"x6.25"x6.5"
- Custom Picture/Names & Dates Additional \$95
(Custom pictures on Maple or Cherry only)



\$360.00

Commemorate Group Infinity

- Pewter A210
- Gold A211
- Brass
- 10.5"x6.3"x6.3"



\$395.00

Commemorate Group Prairie Wheat

- A131
- Brass
- 9.5"x5.5"x5.5"



\$440.00

Joyal & Allard Returning Home

- 09948
- Brass
- 9.8"x6.5"x6.5"



\$440.00

Commemorate Group Floral Etched

- A124
- Brass
- 10"x6"x6"



\$440.00

North Urn Inlaid Style

- 210
- Oak (shown) •Cherry
- 10.5"x5.5"x9.5"



\$460.00

Les Quad Marmo

- Blue Pearl UMARMO-BP
- Carrera White UMARMO-CW
- Marble
- 9.25"x4"x8.75"



\$475.00

Commemorate Group Blessing

- Midnight A292
- Pearl A290
- Lavender A298
- Brass & Aluminum
- 11"x6.5"x6.5"



\$495.00

North Urn Camo Tambour

- 212
- Ash
- 9.5"x5.5"x9.25"



\$490.00

North Urn Howard Miller Tranquility Chest

- 800-114
- Elm Burl Natural Finish
- Brass Finishes
- 10"x8.25"x6.75"
- Ceremonial Rental at Lakeland \$95.00



\$695.00

Companion Urns

Applicable taxes are in addition to all prices.

North Urn Companion

- NU203
- One Standard Image Included
- Dark Walnut •Light Walnut •Rosewood
- Poplar •Ash •Cherry
- 11"x9"x10"



\$510.00

North Urn Contemporary Companion

- NU207
- Oak •Cherry
- 11"x9"x10"



\$625.00

Les Quad Double Companion

- Carrera White UE-DCW/2
- Marble
- 10.25"x7.5x8"



\$775.00

Keepsake Urns

Applicable taxes are in addition to all prices.

Joyal & Allard Pocket Keepsake

- 02901-02924
- Silver, Black, Rose Gold, Gold
- Blank, Tree of Life, Hearts
- Metal
- 1.5"x1"



\$75.00

Commemorate Group Keepsakes

- K124 •K131 •K210 •K211 •K501
- K290 •K292 •K298 •K213 •K212
- Various Designs
- Brass
- 2"x2"x3.25"



\$130.00

North Urn Keepsake

- 240
- Various Standard Images
- Ash •Walnut •Oak
- Pine •Cherry •Poplar
- 5"x3.75"x4"
- Custom Picture / Names & Dates
- Additional \$95



\$195.00

Gravure Craft Pendants

- URJ-_____
- Various Types
- Stainless Steel
- Chain Included



\$129.95

Loved Remembered Stainless Steel

- Stainless1 •Stainless2 •Stainless3
- Stainless4 •Stainless5 •Stainless6
- Stainless7 •Stainless8 •Stainless9
- Stainless10 •Stainless11 •Stainless12
- Various Types
- Fingerprint & Engraving Included
- Chain Included
- Ask your Funeral Director for more options

			
\$155.00	\$159.00	\$169.00	\$179.00
holds remains	does not hold remains	holds remains	holds remains
Stainless 3	Stainless 10	Stainless 4	Stainless 5

Starting From:
\$155.00

Eternity's Touch Sterling Silver Pendant

- Fingerprint Included
- Engraving Additional
- Chain Included: 18", 20", 22" or 24"
- Chain Thickness: Normal or Thick
- Ask your Funeral Director for more options



As Quoted

Portraits Under Glass Custom Blown Glass Bead

- PUG-01 •PUG-02 •PUG-03
- PUG-04 •PUG-05
- Various Types & Colours
- Fits Pandora® bracelets
- Bracelet or Chain not included
- Made in Ontario

		<table border="0"> <tr> <td></td> <td>Light Blue</td> <td></td> <td>Sand</td> </tr> <tr> <td></td> <td>Dark Blue</td> <td></td> <td>Light Green</td> </tr> <tr> <td></td> <td>White</td> <td></td> <td>Dark Green</td> </tr> <tr> <td></td> <td>Black</td> <td></td> <td>Turquoise</td> </tr> <tr> <td></td> <td></td> <td></td> <td>Pink</td> </tr> <tr> <td></td> <td></td> <td></td> <td>Purple</td> </tr> </table>		Light Blue		Sand		Dark Blue		Light Green		White		Dark Green		Black		Turquoise				Pink				Purple
	Light Blue			Sand																						
	Dark Blue			Light Green																						
	White			Dark Green																						
	Black			Turquoise																						
			Pink																							
			Purple																							
PUG-01 (without metal core)	PUG-03 (without metal core)																									
PUG-02 (with metal core)	PUG-04 (with metal core)																									
																										
PUG-05 chain included																										

Bead
\$225.00

Pendant
\$260.00

Loved Remembered Murano Glass Heart

- MH3269 •MH3906 •MH3913 •MH3946
- Various Colours
(Birthstones and additional options)
- Engraving Included
- Ask your Funeral Director for more options

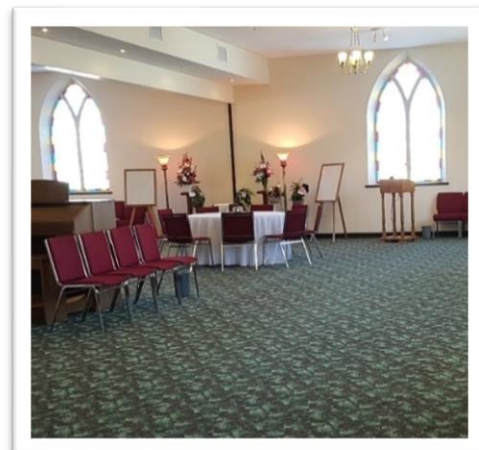


\$265.00

Disbursements may include:

Disbursements are fees charged to the family, which the funeral provider pays on the family's behalf. Prices include applicable taxes.

Municipal Registration	\$21.00
Bereavement Authority of Ontario Consumer Protection Fee	\$30.00
Coroner's Fee	\$75.00
Clergy Honourarium	\$350.00
Organist	At Cost
Newspaper Notices	At Cost
Church Fees	At Cost
Opening/Closing Fees at Cemetery	At Cost
Cremation Fee	At Cost



Payment, Financing and Funding

We are proud to offer various payment, funding and financing options to our clients.

Payment

Unless otherwise specified, a deposit of 50% is required on the day of signing the contract. Balance is due within 30 days of signing the contract. Payment may be made by cash, cheque, debit, and most major credit cards. Beyond the allotted time, interest can be charged at a rate of 1.5% per month, which is equivalent to 18% per annum (APR).

If you are prepaying for services or supplies, pre-authorized chequing is also available.

Financing (Pre-arrangements only)

Our payment plans give you the option of making payments over time. We offer a competitive financing program, administration fees and interest rates.

Funding (Pre-arrangements only)

For your convenience, we offer two funding options when prepaying services or supplies. When prepaying, you pay for the services and supplies today and the money will be used to pay for the services and supplies when they are delivered at the time of death.

Trust: Money is directed into a individual trust, where it will accrue interest until the contract is fulfilled (when the services and supplies are delivered) or the contract is cancelled.

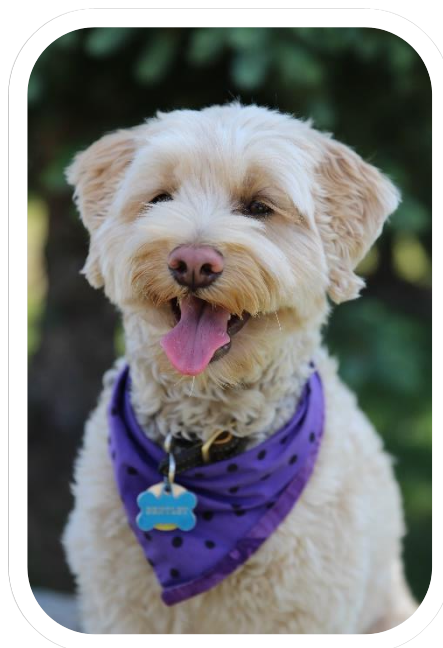
Insurance: You may purchase an insurance contract where the proceeds of the insurance contract will be used to pay for the services or supplies at the time they are delivered or the contract is cancelled.

Additional information about funding, payment and financing options is available on request.

Come and meet our

Comfort Dog

Bentley 



Affiliations

Little Lake Cemetery offers a wide range of services through affiliate companies. Below are the companies Little Lake Cemetery Co. owns and operates.

Little Lake Cemetery - Established 1850

Located on Haggart Street, Peterborough. Provides a peaceful and tranquil surrounding to honour and memorialize your loved. Lots and niches available for purchase.

Highland Park Cemetery - Established since the 1970s

Located at 2510 Bensfort Road, Peterborough, Highland Park Cemetery provides serenity with its park like setting.

Highland Park Funeral Centre and Highland Park Cemetery

Located at 2510 Bensfort Road, Peterborough, the Funeral Home officially opened in October of 2012 as a fully licensed funeral home operating at Highland Park Cemetery. The Highland Park Cemetery was established in the 1960s and provides serenity with its park like setting.

Highland Park Crematorium - Established 1975

Located at Highland Park Cemetery, the crematorium ensures your loved one is cared for in the same dignified and compassionate way you have come to expect from the Little Lake Cemetery Co.

Trent Cremation Services - Established 2001

Located at 2510 Bensfort Road, Peterborough, Trent Cremation Services provides alternative services to those requesting simple, dignified arrangements.

Mill Valley Funeral & Cremation Centre - Established 2021

The Mill Valley Funeral & Cremation Centre, centrally located in Millbrook, Ontario was formerly known as the Fallis & Shields Funeral Home (December 2015 to October 2021). The Mill Valley Funeral & Cremation Centre specializes in providing affordable funeral and cremation options to the families located in and around the Millbrook community.

