



HIGHLAND PARK FUNERAL CENTRE



“The Comfort of Care”

**2510 Bensfort Road
Peterborough, Ontario
K9J 1C5**

705-745-6984 1-800-672-9652

www.highlandparkfuneralcentre.com

A Division of Little Lake Cemetery Company

Price List Effective: April 18, 2024

Person in charge of day-to-day operations: James Belk

**Unless otherwise identified,
all prices do not include applicable taxes**



Welcome to the Highland Park Funeral Centre, a landmark facility for Peterborough that has elevated the standards of funeral and reception facilities, while ensuring you receive the same level of professionalism you have come to expect.

Highland Park opened in the fall of 2010 and was built to encompass the ever-changing needs of our families, while keeping the future in mind and securing a positive outlook for the lot owners of both Little Lake and Highland Park Cemeteries.



Our Non-denominational Chapel and Tribute Centre can comfortably accommodate up to 350 people, while still maintaining a comfortable atmosphere for smaller gatherings.

In addition, the Reception Centre can cater to all needs accommodating both large and small gatherings. By recognizing the needs and wishes of our families, our reception facilities are fully equipped with state-of-the-art flat screen televisions and sound equipment. This allows families to use this part of our facility as the sole way of celebrating their loved one's life or continuing the journey after a service of remembrance.

For over 160 years, Little Lake Cemetery Company has been assisting families as they journey through the most difficult times in their lives. This "Comfort of Care" allow families to focus on the most important aspects of their grief journey as they celebrate the life of their loved one. From the moment we are called upon, we will be there to guide you through every aspect of this difficult process, providing all your needs at one location.



Explanation of Our Services

<p>Co-ordinating Activities, Rites, Ceremonies</p> <ul style="list-style-type: none"> Professional Consultation with licensed personnel, including, but not limited to, expert advice on options to meet your needs Co-ordination of funeral and memorial service details with clergy, musicians, cemetery and/or crematorium and organization of vehicles and staff. Ordering of caskets, urns, flowers, catering or other products from suppliers Preparation and placement of newspaper death notices Includes usage of telephone, fax, computer and photocopier as required Administration includes accounting and maintenance of the file 24-hour availability of a funeral director by phone 	<p><u>Traditional</u> \$1,500.00 <u>Sameday</u> \$1,350.00 <u>Memorial</u> \$1,350.00 <u>Graveside</u> \$1,000.00 <u>Direct</u> <u>Disposition</u> \$700.00</p>
<p>Documentation - Permits, Forms, etc.</p> <ul style="list-style-type: none"> Completion and filing of all documents necessary to carry out the services and supplies requested, including, but not limited to, death registration, burial permit, coroner's certificate for cremation, documentation necessary to ship the body out of the country Provision of Proofs of Death issued by Highland Park Funeral Centre (our proofs of death are usually accepted for most estate settlement purposes, but sometimes a provincial "Death Certificate" will be necessary and is available from the Office of the Registrar General) 	<p>\$285.00</p>
<p>Transport Deceased - Initial Transfer</p> <ul style="list-style-type: none"> Transfer of the deceased from the place of death (Residence, Nursing Home or Hospital) to our Funeral Home holding facility within a 40 km radius of the establishment Additional mileage charge after 40 km is \$2.75 / km (one way) for all vehicles 	<p>\$275.00</p>
<p>Embalming of Remains (Requires Facilities for Preparation/ Embalming/Shelter) (This charge is in addition to the basic preparation of remains)</p> <ul style="list-style-type: none"> Embalming is the disinfection, restoration and temporary preservation of the deceased including bathing, dressing, casketing and cosmetics as required Embalming is not legally required, but may be recommended to preserve the deceased between the time of death and the visitation or disposition of the deceased. Professional Hairdresser when required at a cost of \$60. 	<p>\$300.00</p>
<p>Basic Preparations of Remains (Requires Facilities for Preparation / Embalming / Shelter)</p> <ul style="list-style-type: none"> The preparation may include when necessary, bathing, dressing, casketing and setting of facial features for identification or immediate viewing purposes without embalming 	<p>\$150.00</p>

Applicable taxes are in addition to all prices.

Explanation of Our Services (cont'd)

Staff Services for Visitation <ul style="list-style-type: none"> Includes receiving and arranging of floral tributes, room set-up, staff assistance and supervision during visitation, co-ordination of donations and other duties associating with certain rites for up to 4 hours 	<u>Up to 4 hours</u> \$450.00 <u>Up to 2 hours on same day</u> \$250.00
Staff Services for Ceremony <ul style="list-style-type: none"> Includes preparation and set up of chapel, staff support and direction of services, as required and co-ordination of donations 	\$400.00 <u>Graveside</u> \$250.00
Facilities for Preparation/ Embalming/ Shelter <ul style="list-style-type: none"> Facilities used to prepare, embalm and shelter the body 	\$150.00
Facilities for Visitation (requires Staff Services for Visitation) <ul style="list-style-type: none"> Use of Room for up to 4 hours prior to the service for the informal gathering of family to receive guests and offer condolences. Complimentary coffee and tea. May include: all furnishings, flower and picture stands, religious equipment and audio/visual equipment 	\$450.00
Facilities for Ceremony (requires Staff Services for Ceremony) <ul style="list-style-type: none"> Rental of the chapel for up to 2 hours on the day of the service. May include: all furnishings, flower and picture stands, religious equipment and audio/visual equipment 	\$550.00
Lead Vehicle (within 40 km) <ul style="list-style-type: none"> This vehicle is used by the Funeral Director (and Minister if present) to lead the procession from the Chapel or other venue to the cemetery or crematorium 	\$100.00
Funeral Coach or Hearse <ul style="list-style-type: none"> The Hearse is required for the transportation of the deceased from the Chapel or other venue to any cemetery or crematorium (within 40 km) (within 40 km and / or 3 hour usage) Overtime charges apply - \$120 per hour 	\$450.00
Transfer / Administration Vehicle (within 40 km) <ul style="list-style-type: none"> This vehicle is required to transfer the deceased from place of death to the funeral home as well as complete, when necessary, any administrative duties 	\$175.00
Service at Other Location <ul style="list-style-type: none"> Includes preparation and set up of facility, equipment such as flower stands, picture boards, memorial table or casket equipment 	\$450.00
General Service Areas	\$550.00
Additional Staff Person – Extraordinary Circumstances (per 3 hour period)	\$100.00/ person

Applicable taxes are in addition to all prices.

Explanation of Our Services (cont'd)

<p>Reception Centre (Catering is additional)</p> <ul style="list-style-type: none"> • Facility is equipped with a divisional wall to accommodate both large and small groups • Includes all furnishings, audio/visual equipment and the set-up and clean-up of facilities 	\$550.00
<p>Host / Hostess – minimum of 1 hostess required per 100 people</p> <ul style="list-style-type: none"> • Required only when catering is supplied from an outside source • Price depends on needs and time required 	Quoted as needed
<p>Catering</p> <ul style="list-style-type: none"> • Depending on selections – A selection of refreshments for post funeral gathering (Note: prices for groups less than 50 people are quoted personally by your Funeral Director) 	Quoted as needed
<p>Beverage Service</p> <ul style="list-style-type: none"> • May include, when necessary, the rental of beverage glasses, one smart server, retrieving beverages and Special Occasion Permit • All alcohol is an additional cost 	\$500.00
<p>Beverages</p> <ul style="list-style-type: none"> • Required when catering is supplied from an outside source • Includes tea, coffee and juice 	\$95.00
<p>Aftercare Support</p> <ul style="list-style-type: none"> • This includes assistance through our Aftercare Program to complete and organize government letters and applications (CPP Death Benefit, Survivor Benefit, cancellation of SIN, driver's license, health card, accessible parking permit, passport etc. and notifying the Credit Bureau). Includes organizational folder with a supporting private website as well as an information booklet with template letters and phone numbers to both government and private institutions and estate checklists. 	\$350.00
<p>Exclusivity Fee</p> <ul style="list-style-type: none"> • May be applied when client family wishes to have exclusivity of the facility during their service or wishes to book their service outside of the staff designated times on Saturdays. 	\$800.00
<p>Deferral or Holiday Fee</p> <ul style="list-style-type: none"> • This fee may be applied when services are deferred by more than four days • Includes ongoing communication, coordination and when required care of the deceased 	\$350.00
<p>PPE Provision</p> <ul style="list-style-type: none"> • May include masks for attendees, staff or other PPE as needed 	\$150.00
<p>Web broadcasting</p>	\$295.00
<p>Flowers</p>	As selected

Applicable taxes are in addition to all prices.

Explanation of Our Services (cont'd)

Refundable Deposit for Cremated Remains	
<ul style="list-style-type: none"> When human remains are to be cremated, a refundable deposit will be required to be paid. If the cremated remains are not claimed within one year of the cremation, the deposit may be used to inter the cremated remains in common ground. If the cremated remains are claimed before they are interred, the deposit will be refunded. 	\$350.00
Filling of Urns/Keepsakes Not Purchased from Highland Park	
<ul style="list-style-type: none"> Fee for filling Urn/Keepsakes not purchased from Highland Park First Urn/Keepsake/Jewelry: \$50 Each additional: \$15 	\$50.00
*Note that Highland Park does not accept any liability for damage of items or their suitability for holding cremated remains that are not purchased from Highland Park.	
Removal of Pacemaker or Implant	
<ul style="list-style-type: none"> The removal of a pacemaker or implant will be carried out by a licensed professional 	\$95.00
Body Pouch	
<ul style="list-style-type: none"> May be required when death occurs at a residence, nursing home and situations where a pouch has not been used. 	\$65.00
Stationery - by Gravure Craft / Commercial Press	
<ul style="list-style-type: none"> Superior Package - Register Book, Thank You Cards and 100 Personalized Memorial Cards Additional Memorial Cards available 	\$310.00 \$1.75 / card

Disbursements may include:

Disbursements are fees charged to the family, which the funeral provider pays on the family's behalf. Prices include applicable taxes.

Municipal Registration	\$32.50
Bereavement Authority of Ontario Consumer Protection Fee	\$30.00
Coroner's Fee	\$75.00
Clergy Honourarium	\$300.00
Organist	At Cost
Newspaper Notices	At Cost
Church Fees	At Cost
Opening/Closing Fees at Cemetery	At Cost
Cremation Fee	At Cost

FUNERAL PACKAGES

	<u>Traditional</u> Visitation for up to 4 hours followed by a Service next day	<u>Sameday</u> Visitation for up to 2 hours immediately followed by a Service on the same day	<u>Memorial Service</u> When cremation has taken place, a service preceded by visitation up to 2 hours	<u>Graveside Service</u> Service at Graveside	<u>Direct Cremation</u> No Visitation or Service
Professional & Staff Services					
Co-ordination Activities, Rites and Ceremonies	\$ 1,500.00	1,350.00	1,350.00	1,000.00	700.00
Documentation - permits, forms etc.	\$ 285.00	285.00	285.00	285.00	285.00
Local Transfer	\$ 275.00	275.00	275.00	275.00	275.00
Embalming of Remains	\$ 300.00	300.00	-	-	-
Basic Preparation of Remains	-	-	150.00	150.00	150.00
Staff Services for Visitation	\$ 450.00	250.00	250.00	-	-
Staff Services for Ceremony	\$ 400.00	400.00	400.00	250.00	-
Facilities for Visitation Room	\$ 450.00	-	-	-	-
Facilities for Ceremony	\$ 550.00	550.00	550.00	-	-
Facilities for Preparation / Embalming / Shelter	\$ 150.00	150.00	150.00	150.00	150.00
Automobiles:					
Lead Vehicle	N / C	N / C	N / C	N / C	-
Funeral Coach	\$ 450.00	450.00	-	-	-
Transfer / Administration Vehicle	\$ 175.00	175.00	175.00	175.00	175.00
Total Service Fees	\$ 4,985.00	4,185.00	3,585.00	2,285.00	1,735.00

Applicable taxes are in addition to all prices.

**With Funeral Coach
\$2,735**

**With Funeral Coach
\$2,185**

Caskets Applicable taxes are in addition to all prices

* Identifies which caskets are NOT suitable for cremation.

Please note the rental casket has been used before, and may be used again and are for cremation only.

A new rental liner and interior is used for each deceased.

Please note in some cases a larger casket is required. A Funeral Director will consult with the family at time of need.

All cremation caskets and caskets are suitable for cremation and priced at adult standard sizes.

Cremation Caskets

Enhanced Container

CR199-00001

Corrugated with a wood tray bottom

No Interior, nylon handles

Remains up to 150 pounds

Victoriaville

Adult 75" x 22" x 12.5"



\$325.00

#10 Particle Board

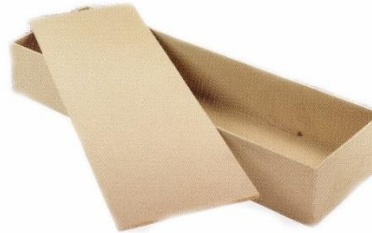
Sealed Bottom Panel

No Interior

Remains up to 225 pounds

Northern Casket

Adult 75" x 22" x 12.5"



\$405.00

Glendale HC LP LINED

80-5070-90

Select wood Natural finish

Basic white crepe interior

No handles

Victoriaville

Adult 80" x 24" x 15"



\$725.00

Plain #40

Plain Blue Cloth Exterior

Lift Off Lid

White Taffeta Interior

Metal Handles

Northern Casket

Adult 78" x 25" x 13"



\$1,025.00

Plain #60

Plain Blue Cloth Exterior

White Taffeta Interior

Metal Handles

Northern Casket

Adult 84" x 31" x 24"



\$1,335.00

Caskets

Diamond PC

50-479-01
Solid Poplar
Natural Finish
White Crepe Interior
Woodbar Handles
Victoriaville
Adult 77" x 25" x 17"



\$1,540.00

Rental Casket

Carlton

33
Ash
Golden Gloss Finish
Rosetan Crepe Interior
Northern

The rental casket insert is suitable for cremation and priced at adult standard size. Please note the rental casket has been used before, and may be used again and are for cremation only. A new rental liner and interior is used for each deceased.



Rental
\$1,595.00

Purchase
\$2,570.00

Bamboo Coffin

PI-Coff
Natural Bamboo Weave
Rope and Bamboo Handles
Natural Cotton Interior
Northern
Adult 82" x 27" x 13"



\$2,695.00

Oxford

450
Tweed Felt Finish
White Crepe Interior
Metal Bar Handles
Northern
Adult 80" x 29" x 22"



\$2,160.00

Kleinburg

646
Poplar
High gloss finish
Rosetan crepe interior
620P Northern Casket
Adult 82" x 28" x 22"



\$3,085.00

#500 Rosehall Oak

Oak
K-Panel
Blended High Gloss Finish
Pink Crepe Interior
Woodbar Handles
Northern Casket
Adult 81" x 27" x 21.5"



\$3,290.00

Carson

52-8012-01
Poplar
Sangria Polish Finish
Tan Crepe Interior
Victoriaville
Adult



\$3,495.00

Wood Park

659
Canadian Solid Oak
Hand Rubbed Gloss Finish
Wood Bar Handles
Rosetan Crepe Interior
Northern
Adult 80" x 29" x 22"



\$3,910.00

Cambrian

23
Oak
High Gloss Brown Finish
Velvet Interior
Northern Casket
Adult 82" x 28" x 21"



\$4,630.00

Woodford Pecan

242987
Pecan Veneers with Engineered Wood Construction
with Pecan Solids
Batesville Casket
Adult 81" x 28" x 22"



\$5,350.00

Burial Vaults **Applicable taxes are in addition to all prices.**

Holiday and Weekend surcharge for Vault Delivery \$185.00

Cemetery Equipment: Included casket lowering devices and artificial greens setup (when there is no outer container purchased) \$375.00.

<p>Crypt (not considered a vault) by Kawartha Vault Non-reinforced Porous thin-walled concrete meant to maintain the integrity of the grave only</p>		<p>\$1,195.00</p>
<p>Standard Liner (not considered a vault) by Kawartha Vault Non-reinforced porous concrete liner meant to maintain the integrity of the grave only</p>		<p>\$1,395.00</p>
<p>Monticello / Montclair By Kawartha Vault / Century (WV30) 2,600 lbs, 65-year warranty, Finest single-reinforced burial vault (concrete / plastic). High-strength concrete with premium ABS Marbelon™ plastic-reinforced cover and base (2nd generation plastic) and has 4 times the impact strength of the Strentex® liner. Rich look of polished marble, ABS Plastic carapace. Personalization choice available.</p>		<p>\$1,695.00</p>
<p>Venetian / Cathedral By Century 2,600 lbs, 65-year warrant, Finest single-reinforced burial vault, High-strength concrete with high-impact plastic and a reinforced cover and base, Inner liner available in marbling or solid. Personalization choices available.</p>		<p>\$2,295.00</p>
<p>Stainless Steel / Cameo Rose Triune by Century (SST30, CR30) 3,000 lbs, 75-year warranty, Mid-line burial vault, Double reinforced unit (concrete/plastic/stainless steel), Cover and base reinforced with high-impact ABS plastic (2nd generation plastic), strong, corrosion-resistant stainless steel, Brilliant stainless-steel carapace. Includes Memorialization Plus™ brass capsule, special emblems and customized nameplate, Personalization available</p>		<p>Stainless Steel \$3,195.00 Cameo Rose \$3,195.00</p>
<p>Copper / Bronze Triune by Century (CT30, BT30) 3,000 lbs, 75-year warranty, Double-reinforced burial vault (concrete/plastic/copper or bronze), High-strength concrete with copper/bronze (one of the finest metals used in burial) and high-impact ABS plastic, (2nd generation plastic), Cover and base reinforced with non-rusting copper/bronze, Rich copper/bronze carapace, Includes Memorialization Plus™ brass capsule, special emblems and customized nameplate, Custom Legacy Series personalization is available as well as standard personalization options</p>		<p>Bronze \$3,795.00 Copper \$3,995.00</p>

Urn Vaults

Applicable taxes are in addition to all prices.

Sand Spun Urn Vault

by Eckles
#027

Basic entry level urn vault

Size: 14-1/2" W x 9" D x 9" H

Interior Dimensions: 12" W x 8" D x 8" H



\$395.00

Universal Urn Vault

by Century

Basic Protection products are single-reinforced and feature concrete construction combined with plastic-reinforcement for strength.



\$820.00

Monticello Urn Vault

by Century

Basic Protection products are single-reinforced and feature concrete construction combined with plastic-reinforcement for strength.



\$1,080.00

Venetian Urn Vault

by Century

Basic Protection products are single-reinforced and feature concrete construction combined with plastic-reinforcement for strength.



\$1,195.00

Cameo / Stainless Steel Triune Urn Vault

by Century

High-strength concrete, stainless steel, and high-impact ABS Trilon® thermoplastic combine for durable inner protection in these double-reinforced products. All triune series burial vaults can be personalized with Wilbert Legacy Series' prints or Life's Reflections' appliques.



\$1,230.00

Copper / Bronze Triune Urn Vault

Wilbert's double-reinforced premium protection vaults include high-strength concrete lined with corrosion-resistant bronze or copper. These premium protection products provide excellent durability. All triune series burial vaults can be personalized with Wilbert Legacy Series' prints or Life's Reflections' appliques.



\$1,495.00

Urns

Applicable taxes are in addition to all prices.

Scattering Tube

PI- _____

- Various Images
- Large
- Cardboard
- by Commemorate Group
- 12.6" x 5.1"



\$175.00

Journey

4110 AB

- Biodegradable
- by Eckles
- 13" x 3" x 13"



\$240.00

Standard Plain

NU202

- Solid wood
- Dark Walnut •Rosewood •Poplar
- Light Walnut •Ash •Cherry
- Custom Picture/Names & Dates - Additional \$95
- by North Urn
- 9" x 6.5" x 6.5"



\$360.00

Commemorate Pewter

A210

- Brass
- by Commemorate Group
- 10.5" x 6.3" x 6.3"



\$395.00

Returning Home

09948

- Brass
- by Joyal & Allard
- 9.8" x 6.5" x 6.5"



\$440.00

Floral Etched

A124

- Brass
- by Commemorate Group
- 10" x 6" x 6"



\$440.00

Prairie Wheat

A131

- Brass
- by Commemorate Group
- 9.5" x 5.5" x 5.5"



\$440.00

Inlaid Style

NU210

- Solid wood
- Oak •Cherry
- by North Urn
- 10.5" x 5.5" x 9.5"



\$460.00

Regal Dove

5501

- Composite
- by Eckels
- 5.25" x 7" x 8.5"



\$465.00

Regal Rose

5502

- Composite
- by Eckels
- 5.25" x 7" x 8.5"



\$465.00

**Black / White Kent
FKV180 / FKV100**

- Cultured Marble
- by Fabhaven
- 9" x 6.5" x 4.75"



\$475.00

**Fairmont Cherry
3523**

- Solid Cherry
- by Eckels
- 11.5" x 7" x 6"



\$495.00

Commemorate Group Blessing

- Midnight A292
- Pearl A290
- Lavender A298
- Brass & Aluminum
- 11"x6.5"x6.5"



\$495.00

**Chestnut Bronze
205404**

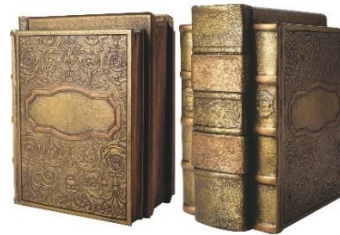
- Brass
- by Batesville
- 9.75" x 6.5" x 6.5"



\$495.00

**Antique Journal
5200**

- Composite
- by Eckels
- 8" x 5.5" x 9.5"



\$595.00

**Walnut Memento
148351**

- Crafted Walnut with Royal Blue Velvet Lining
- by Batesville
- 10.5" x 8" x 6"



\$695.00

Sheet Bronze Plain Chest

148341

- 64 oz Sheet Bronze
- by Batesville
- 9" x 4.75" x 6"



\$750.00

Brushed

235554

- Crafted 64 oz Sheet Bronze with Brushed Finish
- Life Symbols™
- by Batesville
- 4.44" x 8.19" x 9.06"



\$795.00

Bradbury

208692

- Crafted in Pecan Wood with Light Pecan Finish
- Life Symbols™
- by Batesville
- 11" x 10.5" x 8.25"



\$830.00

Provincial

216022

- Rich Rosewood Stain and High Gloss Finish
- Burl Wood Inlay
- by Batesville
- 11.75" x 9.25" x 5.5"



\$850.00

Muskoka

901MUSK

- Black Etched Marble with Design
- by Eckels
- 8.5" x 6" x 6"



\$895.00

Companion Urns

Applicable taxes are in addition to all prices.

Contemporary NU207

- Cherry
- by North Urn
- 11" x 9" x 10"



\$625.00

Together Forever Natural Stone EA1007-E

- Constructed of Natural Stone
- Hand Painted
- by RK Productions
- 9.75" x 9.75" x 7.5"



\$925.00

The Unity 148358

- Constructed of 64 oz Sheet Bronze
- by Batesville
- 9.75" x 6" x 8.25"



\$1,025.00

Two Piece Marble Heart SH2PC110


- Cultured Marble
- by Fabhaven
- 9" x 9" x 9"



\$1,190.00

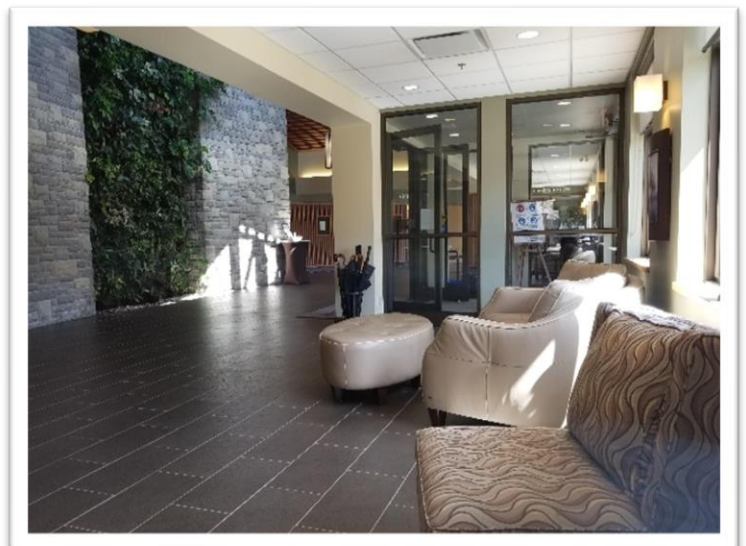
Keepsake Urns

Applicable taxes are in addition to all prices.

<p>Keepsakes</p> <ul style="list-style-type: none">•K124 Floral Etched •K131 Prairie Wheat•K210 Infinity Pewter •K501 Returning Home•Brass•by Commemorate Group•3.25" x 2" x 2"		<p>\$130.00</p>
<p>Comfort Cub</p> <ul style="list-style-type: none">•Stuffed Teddy Bear•Double Heart Keepsake included•by Inevitable Exodus		<p>\$130.00</p>
<p>Chestnut Bronze / Ashen Pewter</p> <ul style="list-style-type: none">•205406 / 205401•Handcrafted Brass with Polished Accents•by Batesville•3.25" x 2" x 2"		<p>\$195.00</p>
<p>Standard Engraving</p> <ul style="list-style-type: none">•Name and Dates <p>Custom Engraving available at an additional cost</p>		<p>\$95.00</p>





Modern and spacious lobby provides an area for larger visitations and services to gather inside. This is beneficial when the weather conditions do not permit.



Keepsake Jewelry

Applicable taxes are in addition to all prices.

<p>Gravure Craft Pendants</p> <ul style="list-style-type: none"> •URJ-_____ •Various Types •Stainless Steel •Chain Included 		<p>\$129.95</p>
<p>Portraits Under Glass Custom Blown Glass Bead</p> <ul style="list-style-type: none"> •PUG-01 •PUG-02 •PUG-03 •PUG-04 •PUG-05 •Various Types & Colours •Fits Pandora® bracelets •Bracelet or Chain not included •Made in Ontario 	 <p>Small European Bead</p> <p>Large European Bead</p> <p>PUG-01 (without metal core)</p> <p>PUG-02 (with metal core)</p> <p>PUG-03 (without metal core)</p> <p>PUG-04 (with metal core)</p> <p>PUG-05 chain included</p> <p>Black White Dark Blue Lite Blue</p> <p>Turquoise Dark Green Lite Green</p> <p>Purple Pink Red Sand</p>	<p>Bead \$225.00</p> <p>Pendant \$260.00</p>

One of the visitation rooms which has the flexibility to be made twice the size by removing temporary wall.



Payment, Financing and Funding

We are proud to offer various payment, funding and financing options to our clients.

Payment

Unless otherwise specified, a deposit of 50% is required on the day of signing the contract. Balance is due within 30 days of signing the contract. Payment may be made by cash, cheque, debit, and most major credit cards. Beyond the allotted time, interest can be charged at a rate of 1.5% per month, which is equivalent to 18% per annum (APR).

If you are prepaying for services or supplies, pre-authorized chequing is also available.

Financing (Pre-arrangements only)

Our payment plans give you the option of making payments over time. We offer a competitive financing program, administration fees and interest rates.

Funding (Pre-arrangements only)

For your convenience, we offer two funding options when prepaying services or supplies. When prepaying, you pay for the services and supplies today and the money will be used to pay for the services and supplies when they are delivered at the time of death.

Trust: Money is directed into a individual trust, where it will accrue interest until the contract is fulfilled (when the services and supplies are delivered) or the contract is cancelled.

Insurance: You may purchase an insurance contract where the proceeds of the insurance contract will be used to pay for the services or supplies at the time they are delivered or the contract is cancelled.

Additional information about funding, payment and financing options is available on request.



Affiliations

Little Lake Cemetery offers a wide range of services through affiliate companies. Below are the companies Little Lake Cemetery Co. owns and operates.

Little Lake Cemetery - Established 1850

Located on Haggart Street, Peterborough. Provides a peaceful and tranquil surrounding to honour and memorialize your loved. Lots and niches available for purchase.

Highland Park Cemetery - Established since the 1970s

Located at 2510 Bensfort Road, Peterborough, Highland Park Cemetery provides serenity with its park like setting.

Highland Park Crematorium - Established 1975

Located at Highland Park Cemetery, the crematorium ensures your loved one is cared for in the same dignified and compassionate way you have come to expect from the Little Lake Cemetery Co.

Trent Cremation Services - Established 2001

Located at 2510 Bensfort Road, Peterborough, Trent Cremation Services provides alternative services to those requesting simple, dignified arrangements.

Lakeland Funeral & Cremation Centre – Purchased in October 2015

Located at 19 Moose Road, Lindsay, Lakeland is a licensed funeral home providing a full range of services and facilities to help you celebrate the life of a loved one.

Mill Valley Funeral & Cremation Centre - Established 2021

The Mill Valley Funeral & Cremation Centre, centrally located in Millbrook, Ontario was formerly known as the Fallis & Shields Funeral Home (December 2015 to October 2021). The Mill Valley Funeral & Cremation Centre specializes in providing affordable funeral and cremation options to the families located in and around the Millbrook community.

