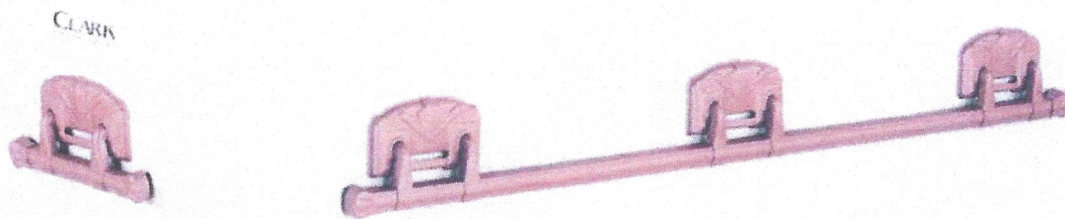


### **BURNISHED BRONZE STEEL 12 GAUGE**

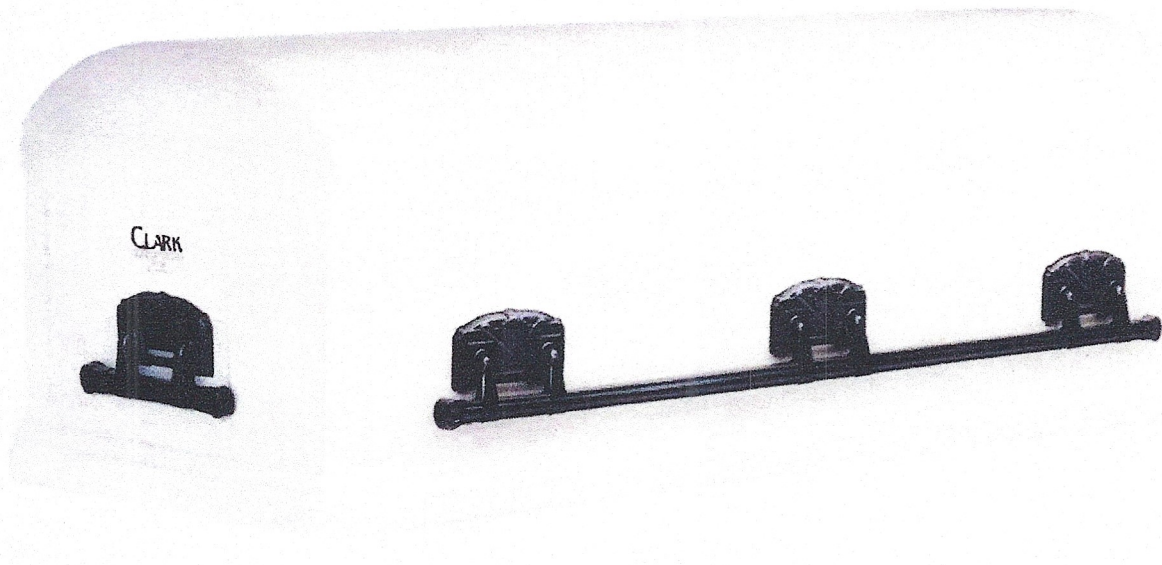
A magnificent finish in the image of one of the world's most elegant metals.



### **WHITEROSE STEEL 12 GAUGE**

- The natural properties of premium quality aluminum protects caskets from the elements for generations.
- Available in 1/8 inch thickness, series 5052 aluminum is commonly used in boat hulls, hydraulic tubing

**ALSO AVAILABLE IN:**

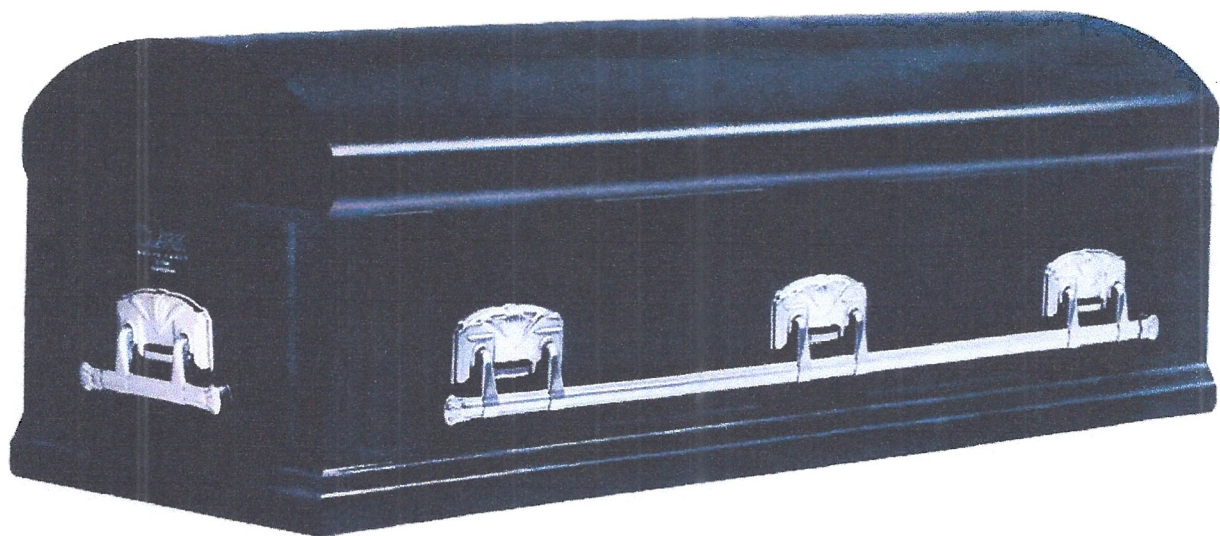


**BROWNSTONE 1/8" ALUMINUM**

State-of-the-art aluminum wrapped in an elegant brownstone finish provides enduring protection at an unmatched value. Clark's all-aluminum construction preserves the vault's integrity, while the dome-shaped design channels water away from the casket.



## **ALUMINUM 1/8" MPI10**



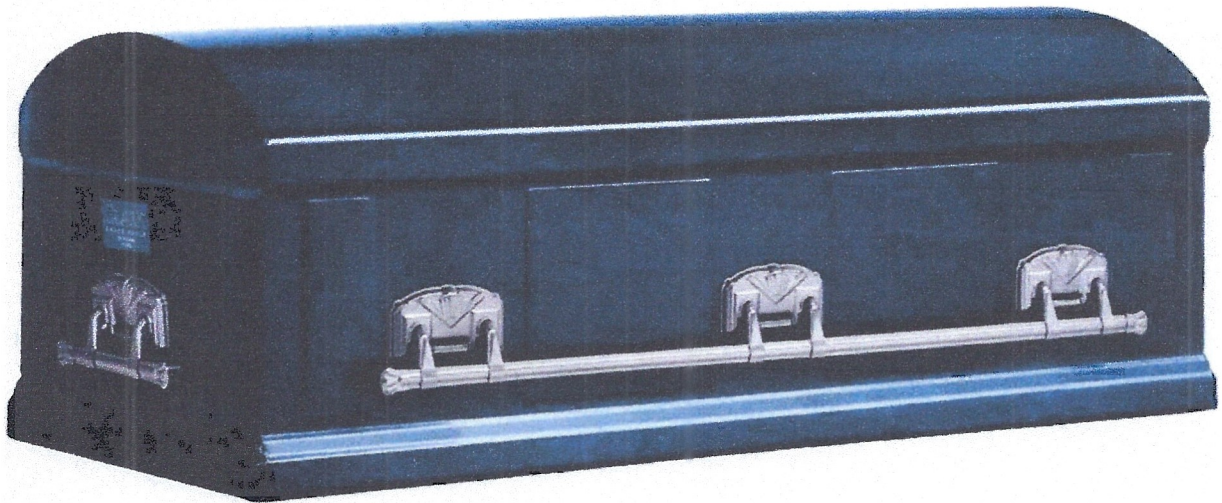
**A RICH DEEP BLUE FINISH ENHANCES THE LUSTER AND STRENGTH OF ALUMINUM.**

Aluminum construction combined with a dome-shaped design moves water away from the casket.

### **ALL ENHANCED SERIES VAULTS OFFER:**

- An extra measure of protection with a choice of two metals: Aluminum and Galvanized Steel.
- Galvanized steel, available in three non-porous metal thicknesses - 7 gauge, 10 gauge and 12 gauge - doubles the life of the vaults.
- You find this type of more durable galvanizing in guardrails, highway sign frames and posts, and light posts.

A delicate whiterose finish belies this vault's uncompromising protection.

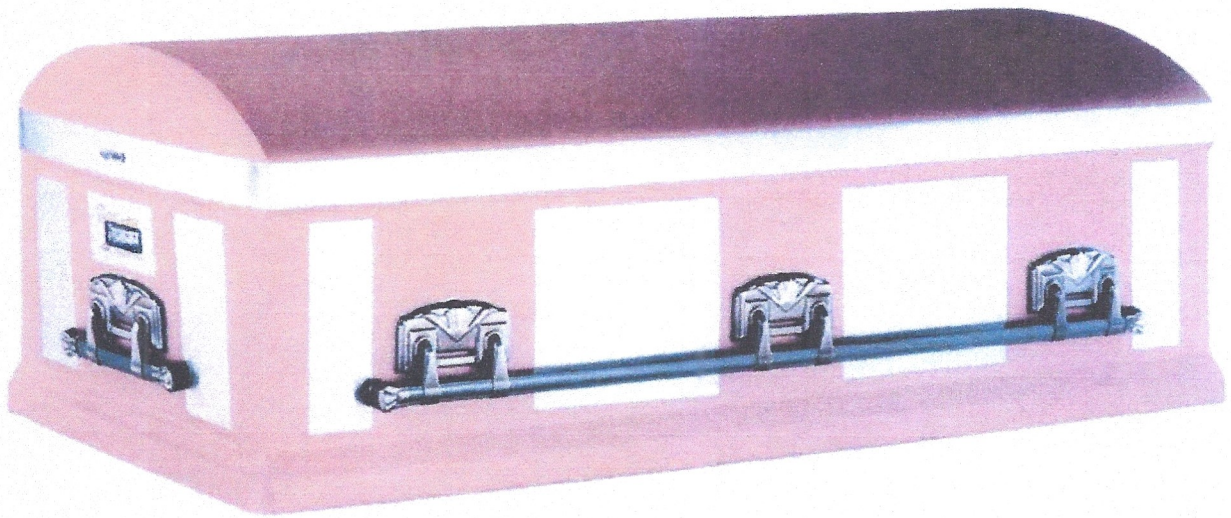


### **DEEP RIVER BLUE STEEL 12 GAUGE**

Finished in deep blue with highlights of silver and white, this vault is as beautiful as it is protective.

- Stainless steel is an alloy of iron, carbon, chromium, and nickel. The stainless steel used in Clark vaults is a premium grade alloy with high chromium and nickel content. The Gateway Arch in St. Louis is made of the same high quality alloy used to manufacture stainless Clark Vaults. Many common kitchen accessories are available in stainless steel such as cookware, flatware and sinks.

**ALSO AVAILABLE IN:**



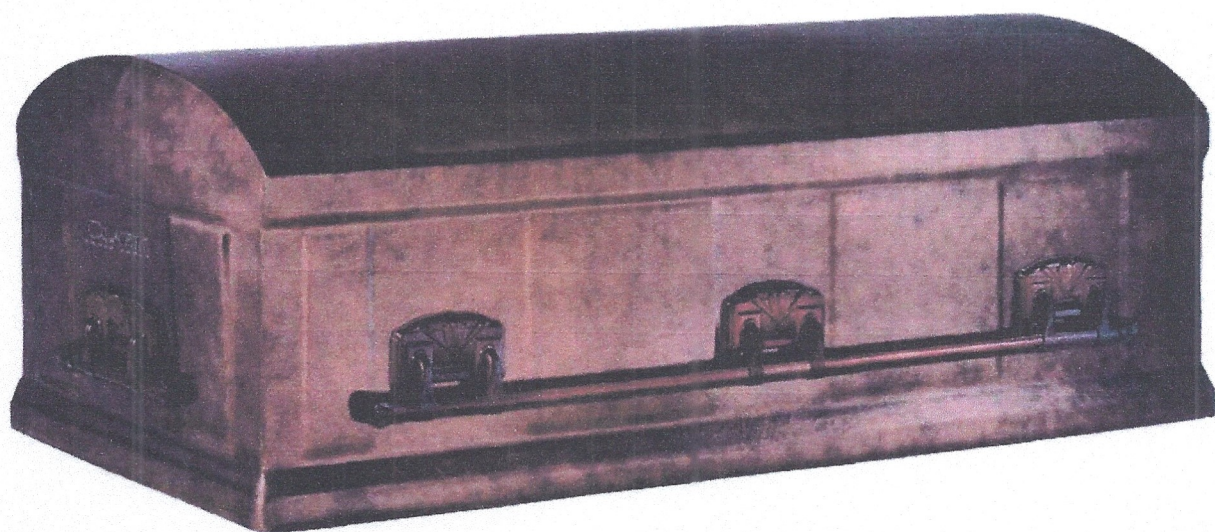
**ROSE STAINLESS STEEL 12 GAUGE**

Rose offers a special radiance to durable stainless steel. This attractive vault features brushed panels and bands on sides and ends.



- The natural properties of premium quality aluminum protects caskets from the elements for generations.
- Available in 1/8 inch thickness, series 5052 aluminum is commonly used in boat hulls, hydraulic tubing and appliances.

**ALSO AVAILABLE IN:**



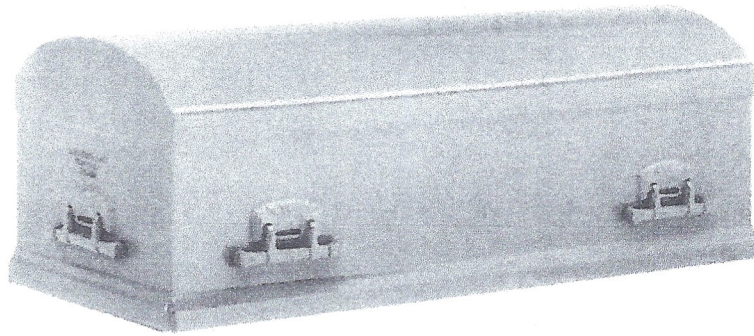
**STATUARY GALVANIZED STEEL 12 GAUGE**

A look of refinement combined with uncompromising protection. Clark's exclusive galvanizing process doubles the life of the steel.

## Econovault.

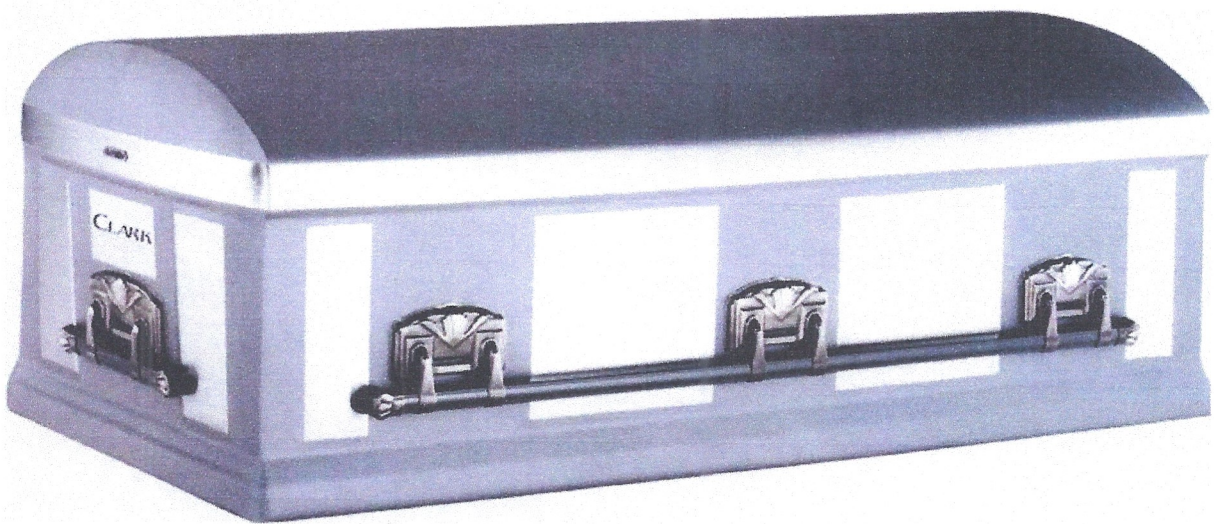
Solid metal  
protection for  
those with more  
limited budget  
considerations.

12 gauge steel.  
Available in gray.



ECONO-LINE  
PRODUCTS

## STAINLESS STEEL 12 GAUGE MPI+



**OFFERS A SPECIAL SILVER RADIANCE TO DURABLE STAINLESS STEEL.**

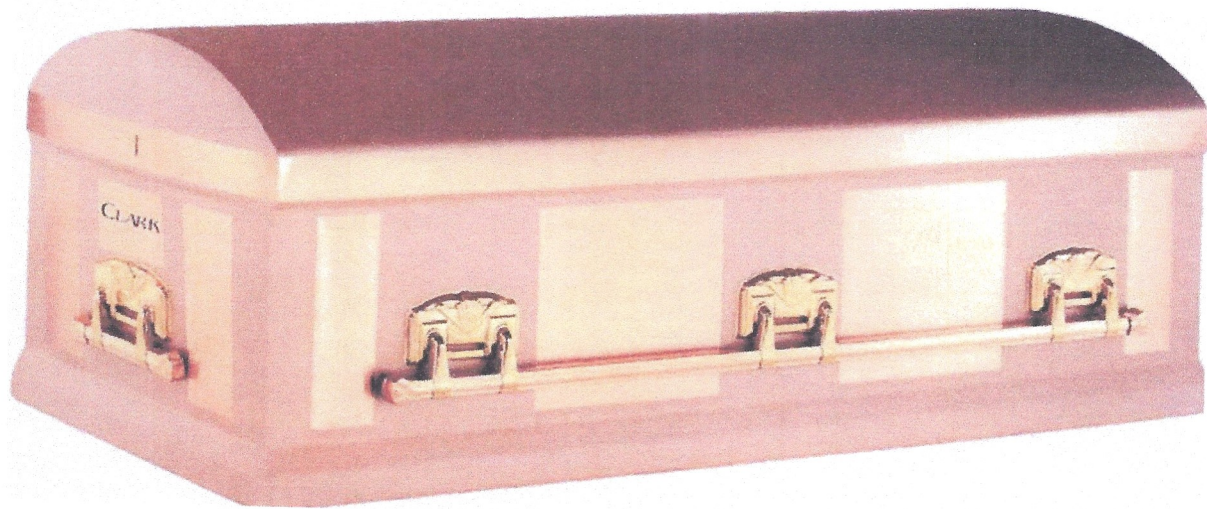
This attractive vault features brushed panels and bands on sides and ends.

### **ALL PREMIUM SERIES VAULTS OFFER:**

- Unequaled eternal protection.
- Choice of two metals: copper and stainless steel.
- Copper offers the ultimate in underground durability. Archeological digs often recover items made of pure copper in superb condition after 8,000 years.



## **SOLID COPPER 12 GAUGE MPI++**



### **ACCENTED WITH THE BEAUTY OF BRUSHED COPPER.**

Copper's natural beauty is accented by brushed side panels, ends, and an attractive band around the top.

### **ALL PREMIUM SERIES VAULTS OFFER:**

- Unequaled eternal protection.
- Choice of two metals: copper and stainless steel.
- Copper offers the ultimate in underground durability. Archeological digs often recover items made of pure copper in superb condition after 8,000 years.