

ISANGI REDD+ VCS-CCB PROJECT DESCRIPTION SUMMARY



Document prepared by:



Project Name	Isangi REDD+ Project
Project Location	Isangi territory, Yangambi District, Orientale Province, Democratic Republic of the Congo
Project Proponent	Jadora, LLC. Contact: Donald Tuttle, CEO, +1 425 614-6191, don@jadorallc.com
Document Prepared By	Ecological Carbon Offsets Partners, LLC (ecoPartners)
Auditor	Rainforest Alliance. Contact: Janice O'Brien, +1-647-899-7214, jobrien@ra.org
Project Start Date	01 – August – 2009
GHG accounting period and lifetime	Starting 01 – August – 2009 and ending 31 – July – 2039
Project Implementation Period and GHG Monitoring Period	August 1, 2009 – December 31, 2013
Validation	Seeking full validation
CCB Status History	Undergoing Initial Validation and Verification
CCB Standards Edition Used	Climate, Community and Biodiversity (CCB) Standards, Second Edition, December 2008
CCB Benefits Summary	The project seeks to address the issue of deforestation in the DRC on a local level, protecting the climate and biodiversity by maintaining and enhancing this tract of rainforest while enhancing the quality of life of the local communities through sustainable agriculture and economic development TODO Update this field
Gold Level Criteria	Biodiversity – The project will protect endangered and vulnerable floral species through forest conservation.
Date of PD Completion	3/15/14
PD Version Number	V1.3 (subject to change)
Expected Verification Schedule	April 17-25, 2014

1 CLIMATE, COMMUNITY AND BIODIVERSITY SUMMARY

1.1 Original Conditions in the Project Area (G1)

Project Location (G1.1)

Nearest Large City: Yangambi (100 Km West of Kisangani)
Territory: Isangi
District: Yangambi
Province: Orientale
Precise Location of Project Activities: 0°24' North, 23° 55' East
Description: Isangi Logging Concessions of *Safbois* S.P.R.L

Project Area and Project Zone boundaries (G1.3)

Located in the central northeast of the DRC, the Isangi territory resides at the heart of the Congo River basin, and is specifically described as a triangular penneplain at the confluence of the Congo River and one of its midreach ordered rivers, the Lomami. Surrounding it on the remaining sides are upland and lowland tropical forests.

The project area is the forested area within the Safbois logging concessions. The project zone is the project area and the land within the boundaries of the adjacent communities potentially affected by the project.

1.2 Project Design and Goals (G3)

Summary of CCB Objectives (G3.1)

Jadora seeks to address the issue of deforestation in the RDC on a local level, protecting the climate and reducing CO₂ emissions that result from the conversion of intact forest to agricultural land. The project will implement a program to prevent degradation and deforestation by replacing the drivers of deforestation with more sustainable ways to meet the needs of the local community. The project will preserve and enhance a threatened but biologically diverse forest habitat for thousands of rare and declining species while maintaining viable natural populations and conserving the function of the natural ecosystem. It will also increase the local and global understanding of biodiversity in the project zone and within the larger Congo River Basin.

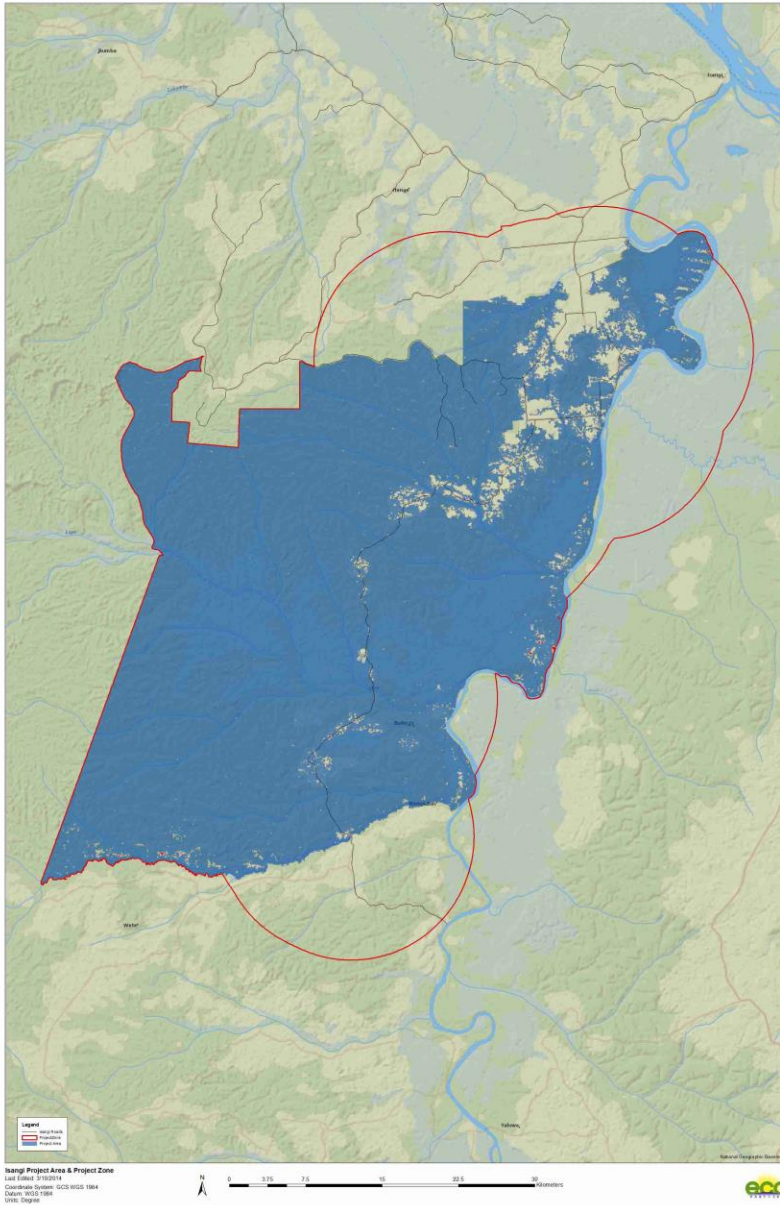
The project looks to improve quality of life and alleviate poverty for communities in the project zone by increasing access to quality education, improving public health practices, as well as promoting sustainable economic development and agricultural practices. In doing so, the project seeks to maintain the value of the ecosystem services upon which the community depends while supporting them to maintain their traditional, cultural and spiritual identities.

Project Activities in relation to Project Objectives (G3.2)

Project activities to be implemented are categorized under four main program areas, Education, Improved Access, Land Use Planning and Improved Production. Each of these program areas has one or more connections to the Climate Community and Biodiversity objectives outlined by the project. For example, project activity of cessation of logging lies under the Land Use Planning program and directly affects climate and biodiversity objectives. Other examples of project activities include demonstration of improved agricultural practices, hiring school teachers, and the construction of tilapia ponds.

Project Location map

All project activities will occur throughout the indicated Project Area.



Map 1: Project Area in blue and Project Zone boundary in red.

Project Lifetime and Implementation Schedule

The project lifetime will be 30 years long beginning on August 1, 2009 and ending on July 31, 2039. The project is divided into four phases of implementation:

- Phase 1: August 1, 2009 – December 31, 2013

- Phase 2: January 1, 2014 – December 31, 2018
- Phase 3: January 1, 2019 – December 31, 2023
- Phase 4: January 1, 2024 – July 31, 2039

1.3 Management Capacity and Best Practices (G4)

Project Proponent (G4.1)

Jadora LLC (Jadora) is a sustainable land and resource management company based in Kirkland, Washington, USA. Jadora is the Project Proponent and is solely responsible for all aspects of project design, implementation, and management. As discussed in section 3.2 below, Jadora has full right of use for all emissions reductions from the Isangi REDD+ Project.

Contact (USA): Donald Tuttle, Founder & CEO
Address: 6401 Lake Washington Blvd Unit 208
Kirkland, WA 98033
Telephone: +1 425 614-6191
Email: don@jadorallc.com
Website: www.jadorallc.com

Other Entities Involved in the Project

Societe Africaine du Bois S.P.R.L. (SAFBOIS) is a Congolese logging company that produces selectively logged, exotic hardwood timber and timber products. SAFBOIS owns the timber rights to the project area and provides Jadora with in-country assistance. This assistance includes access to facilities and equipment, as well as transportation and other logistics inside the DRC. Jadora entered into an agreement with SAFBOIS in August 2009 to be the sole project developer for the Isangi project in exchange for in-country (DRC) logistical support during the project's development and a revenue share of the sale of carbon credits resulting from the development of the project. This agreement grants Jadora all carbon rights associated with the project area.

Contact (DRC): Daniel Blattner, President
Address: 1 Ave Des Poids Lourdes Kingabwa, Limete, Kinshasa
DRC Telephone: +243 81 500 8300
USATelephone: +1 215 295-4040
Email: daniel.blattner@usa.net