



2011/2012

**AVALANCHE RESCUE EQUIPMENT**

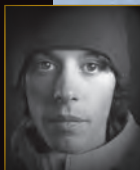




At BCA we live for riding powder, we strive to constantly develop new tools and education so others too can explore the backcountry...and live to tell about it.

We often hear stories of people being rescued with our beacons. This is by far the most rewarding part of working at BCA. We are honoring those lucky people by featuring their stories in our ads.

**LIVING PROOF** I knew I was buried deep. After realizing I was certainly dead, I must have passed out. Having a well-trained friend with a Tracker saved my life.  
– Todd Weselake, Fernie, BC Canada



I triggered a large avalanche which pummeled me through rocks and trees and buried me. Thanks to my Tracker, I was quickly located and airlifted to the hospital, badly injured, but alive. One of my crew found me with his own Tracker—it performed flawlessly under severe stress and ultimately saved my life.  
– Matt Potratz, Lewiston, ID



I descended an exposed 45-60° slope in the Spanish Pyrenees when a crown broke above me. The raging river of snow sucked me away and I was buried 5 feet deep with no air pocket. I felt like I was dying until I heard voices calling my name. I'm grateful my friends had Trackers, knew how to use them and found me so quickly.  
– Fer Barrios, San Martin De Los Andes, Argentina



I was a 16-year-old kid who knew very little about the backcountry. Two years ago a BCA Tracker saved my life. I was buried for eight minutes and I was dug up by friends whom I consider family today. My goal is to become a guide so that I will have the ability to protect people like my former self. Thanks to BCA for saving my life and giving me inspiration.  
– Randall Stacy, Vermont



PHOTO: BIGSKYY.COM/THUNDERSTRUCK FILMS  
TRENNIS BAER TURNS OUT



## TABLE OF CONTENTS

BEACONS :: 2-3

AIRBAGS :: 4-7

PROBES :: 8-9

SHOVELS :: 10-13

STASH PACKS :: 14-15

EDUCATIONAL/SNOW STUDY TOOLS :: 16



## 2011/2012 PRODUCTS

FLOAT 18 :: 4

FLOAT 36 :: 7

BOMBER SHOVEL SERIES :: 10

ARSENAL SHOVEL SERIES :: 12

SNOW STUDY KIT :: 16



## TRACKER AVALANCHE BEACONS

WHEN EASE OF USE MATTERS MOST

TRACKER2™ | TRACKER DTS™

At Backcountry Access, we create our avalanche rescue equipment from the debris pile up. When we design a product, the rescuers' needs come first. We don't create technology for technology's sake. We design our products to save real people in real avalanches. The Tracker2 is the culmination of 15 years of experience in the field.

### TRACKER2™

THE FASTEST, THE EASIEST

Our Tracker2™ offers the industry's fastest, most precise pinpointing, with triple receive antenna, instantaneous real-time display, and the same easy-to-use interface as Tracker DTS™. An intuitive mechanical search/transmit switch makes it easy to use right "out of the box." Thinner profile and harness than Tracker DTS™. Includes Special Mode and multiple burial indicator lights.

**WEIGHT** :: 6.4 ounces / 181 grams without harness and batteries  
10.4 ounces / 295 grams with harness and batteries

**DIMENSIONS** :: 5x3.5x1" / 13x8.5x2.5 cm

**FREQUENCY** :: 457 kHz

**POWER SUPPLY** :: Three AAA alkaline batteries

**WARRANTY** :: 5 years

U.S. patent numbers: 6,167,249 & 6,484,021, B



PHOTO: BIGSKYY.COM/T-HINDERSTROCK FILMS



We've done our homework: our research shows that, in real avalanches, ease of use matters most. That was the foundation of our Tracker DTS, the world's first digital transceiver. The results speak for themselves. Our Trackers are the most trusted and widely used beacons of all time. And more importantly, they have saved scores of lives.

## TRACKER DTS™

THE WORLD'S FIRST DIGITAL AVALANCHE BEACON

Tracker DTS™ is the most established and widely used beacon on the market because of its rapid processor and simple user interface. A real-time, digital display shows both direction and distance with bright red LEDs (light emitting diodes). The distance is shown in meters and indicator lights display the direction of transmitting beacons. As the world's most widely used transceiver, the Tracker has established a strong reputation for durability and reliability. A carrying case and harness are included.

**WEIGHT** :: 8.6 ounces / 245 grams without harness and batteries

13.6 ounces / 385 grams with harness and batteries

**DIMENSIONS** :: 5.2x3.4x1" / 13.2x8.6x2.5 cm

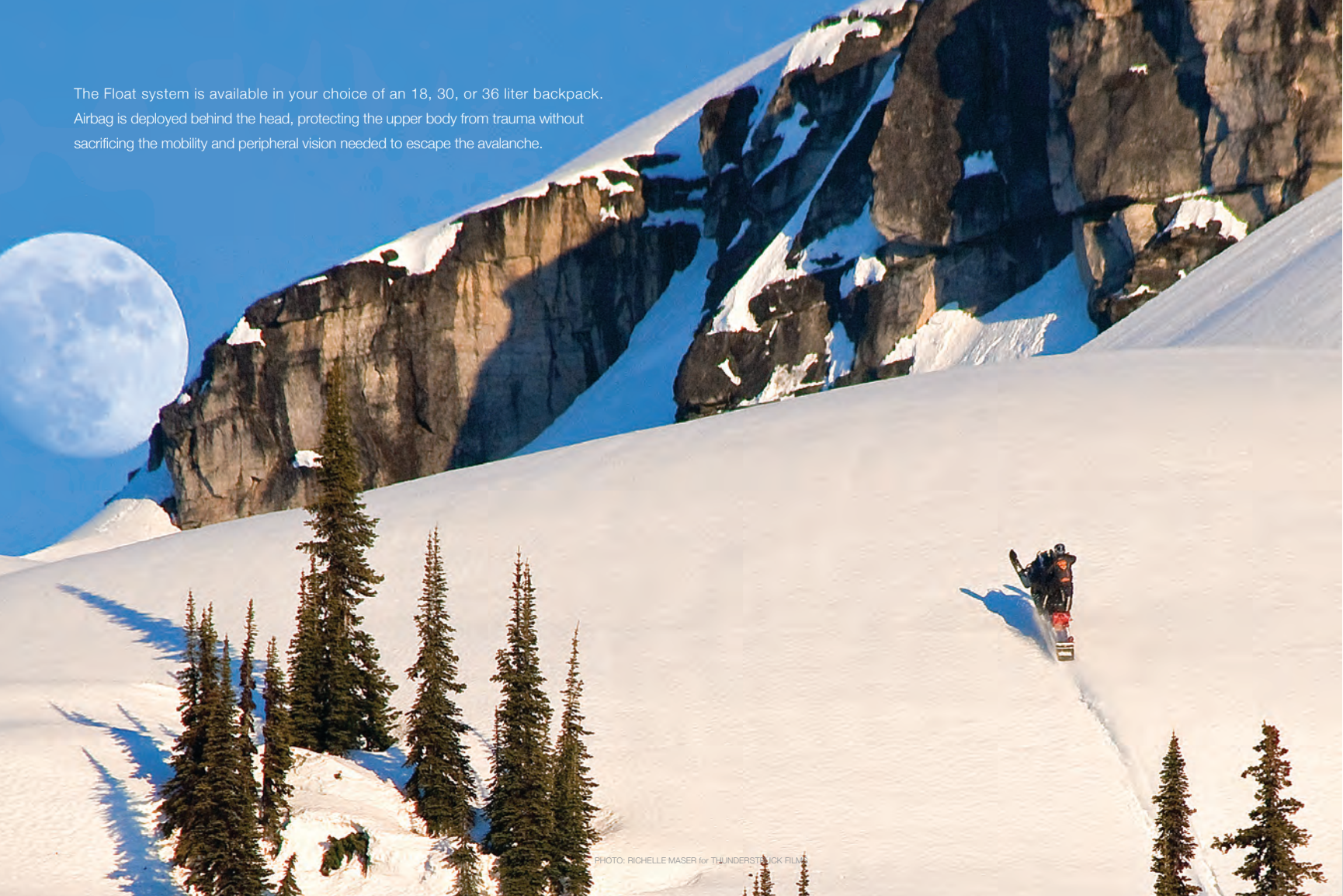
**FREQUENCY** :: 457 kHz

**POWER SUPPLY** :: Three AAA alkaline batteries

**WARRANTY** :: 5 years

U.S. patent numbers: 6,167,249 & 6,484,021, B1

The Float system is available in your choice of an 18, 30, or 36 liter backpack.  
Airbag is deployed behind the head, protecting the upper body from trauma without  
sacrificing the mobility and peripheral vision needed to escape the avalanche.



## FLOAT AVALANCHE AIRBAGS

STAY AFLOAT

FLOAT 18™ | FLOAT 30™ | FLOAT 36™

Excavation time is by far the biggest contributing factor in avalanche fatalities.\*

Our Float avalanche airbags are designed to minimize excavation time by preventing burial. These are the first airbags that are both affordable and easy to use and reuse. A wide network of BCA-authorized refill centers provide unmatched service to Float purchasers. A small 2,700-psi (186 bar) compressed-air cylinder, single-chamber 150-liter airbag, and super efficient venturi system make the Floats easier to carry, repack and refill than European systems.



**new** On all of our Float packs, the new EZ Pull trigger is easier to grab and deploy. Located on the right shoulder strap so you never have to take your hand off the throttle.

### FLOAT 18™ **new**

OUR MINIMALIST MODEL FOR HIGH-PERFORMANCE MOUNTAIN RIDING

Thin profile and lightweight; enough volume to carry rescue tools, lunch, water, and an extra layer. Features internal shovel/probe pockets, helmet and diagonal ski carrying system, waist belt pockets, and optional snowboard attachment kit (sold as accessory).

**PACK VOLUME** :: 1010 cubic inches / 18 liters

**WEIGHT** :: 6.5 pounds / 2948 grams (system)

3 pounds / 1360 grams (pack only)

**TORSO LENGTHS** :: 17-22"

U.S. patent: #7,878,141



\*Digging Deeper: The Real Issues in North American Avalanche Burials found online at [backcountryaccess.com/research](http://backcountryaccess.com/research).



PHOTO: BIGSKYY.COM/THUNDERSTRUCK FILMS  
RIDER: JULIO FIGUEN PULLS A QUICK TURN

## FLOAT AVALANCHE AIRBAGS

STAY AFLOAT

FLOAT 18™ | FLOAT 30™ | FLOAT 36™



### FLOAT 30™

Our existing mid sized pack that will carry all the essential avalanche and survival gear. Features external shovel and probe pockets, diagonal ski carrying system, helmet carry system, waist belt pockets, lined goggle pocket, hydration sleeve, and optional snowboard attachment kit (sold as accessory).

**PACK VOLUME** :: 1830 cubic inches / 30 liters

**WEIGHT** :: 8 pounds / 3629 grams (system)

4.5 pounds / 2041 grams (pack only)

**TORSO LENGTHS** :: 17-22"

U.S. patent: #7,878,141



## FLOAT 36™ new

Designed for pros, guides, and dedicated backcountry riders carrying the full quiver of essentials. Larger and lighter than the Float 30™, Includes big volume, load lifters, back panel access, internal shovel/probe pockets, waist belt pockets, ski and snowboard carry system, lined goggle pocket, and hydration sleeve.

**PACK VOLUME** :: 2197 cubic inches / 36 liters

**WEIGHT** :: 7.7 pounds / 3492 grams (system)  
4.2 pounds / 1905 grams (pack only)

**TORSO LENGTHS** :: 17-22"

U.S. patent: #7,878,141



PHOTO: BIGSKYY.COM/THUNDERSTRUCK FILMS  
RIDER: RANDY SWENSON

7



PHOTO CREDIT: BIGSKYY.COM/THUNDERSTRUCK FILMS  
RIDER: CAM HICKS



# AVALANCHE PROBES

EVERY SECOND COUNTS

SPOT 203 | PROFILE 240 | SR3 | CARBON 260 | CARBON 340

Our Quickie system is the fastest and most intuitive probe tensing hardware in the industry. All BCA probes come with depth markings in one-centimeter increments. Now with grip tape, coated cable for the quickest draw in the West.

## SPOT 203

COMPACT, AFFORDABLE, FAST

**WEIGHT** :: 8.5 ounces / 241 grams

**EXTENDED LENGTH** :: 6' 8" / 203 cm

**COLLAPSED LENGTH** :: 13" / 33 cm

**DIAMETER** :: .43" / 1.1 cm

## PROFILE 240

OUR MAINSTREAM, TOP-SELLING PROBE

**WEIGHT** :: 9 ounces / 255 grams

**EXTENDED LENGTH** :: 7' 11" / 240 cm

**COLLAPSED LENGTH** :: 18" / 45.75 cm

**DIAMETER** :: .43" / 1.1 cm

## SR3

OUR BURLIEST PROBE,  
FOR SEARCH AND RESCUE

**WEIGHT** :: 12 ounces / 340 grams

**EXTENDED LENGTH** :: 9' 8" / 300 cm

**COLLAPSED LENGTH** :: 19" / 48 cm

**DIAMETER** :: .49" / 1.24 cm

## CARBON 260

SUPER LIGHT, YET FULL LENGTH

**WEIGHT** :: 7.5 ounces / 213 grams

**EXTENDED LENGTH** :: 8' 6" / 260 cm

**COLLAPSED LENGTH** :: 16.5" / 42 cm

**DIAMETER** :: .403" / 1 cm

## CARBON 340

OUR LONGEST PROBE,  
FOR SEARCH AND RESCUE

**WEIGHT** :: 11.5 ounces / 326 grams

**EXTENDED LENGTH** :: 11' 2" / 340 cm

**COLLAPSED LENGTH** :: 18.5" / 47 cm

**DIAMETER** :: .5" / 1.3 cm



SPOT  
203

PROFILE  
240

CARBON  
260

SR3

CARBON  
340

NEW SHOVEL BLADE SIZES AND DESIGNS FOR THE BOMBER AND ARSENAL LINES.

B-52

B-2 / A-2

B-1 / A-1



## BOMBER AVALANCHE SHOVELS

DIGS HARD. PACKS SMALL.

B-1 | B-1 EXT | B-2 | B-2 EXT | B-52

We've upped the ante in 2011-12 with a bombproof new lineup of shovels. Our new Arsenal and Bomber lines are even stronger than before and fit better in your pack. They feature our oval shaft with a more packable "neckless" blade, new ergonomic grip, super-strong torsional rigidity and an eye catching industrial design. From the leaders in shoveling technology and education.

### B-1

WORLD'S LIGHTEST AVALANCHE SHOVEL NOW WITH THE STRONGEST BLADE ON THE MARKET

**WEIGHT** :: 18.5 ounces / 525 grams

**HANDLE AND SHAFT LENGTH** :: 16" / 40.5 cm

**BLADE DIMENSIONS** :: 9x10" / 23x25.5 cm

**ASSEMBLED LENGTH** :: 22.5" / 57 cm

### B-1 EXT

EXTENDABLE HANDLE WITH UNBEATABLE STRENGTH-TO-WEIGHT RATIO

**WEIGHT** :: 21 ounces / 595 grams

**COMPRESSED HANDLE AND SHAFT LENGTH** :: 16" / 40.5 cm

**EXTENDED HANDLE AND SHAFT LENGTH** :: 22.25" / 56.5 cm

**BLADE DIMENSIONS** :: 9x10" / 23x25.5 cm

**ASSEMBLED COMPRESSED LENGTH** :: 22.5" / 57 cm

**ASSEMBLED EXTENDED LENGTH** :: 28.75" / 73 cm

For the latest on strategic shoveling technique and research, visit: [www.backcountryaccess.com/shoveling](http://www.backcountryaccess.com/shoveling).

PHOTO: BIGSKYY.COM/THUNDERSTRUCK FILMS

## B-1 SYSTEM WITH PROBE

WORLD'S LIGHTEST, MOST COMPACT  
SHOVEL AND PROBE COMBINATION

**WEIGHT** :: 24.0 ounces / 680 grams  
**HANDLE AND SHAFT LENGTH** :: 17" / 43 cm  
**BLADE DIMENSIONS** :: 9x10" / 23x25.5 cm  
**ASSEMBLED LENGTH** :: 24" / 61 cm

INCLUDES INTEGRATED B-1 PROBE IN SHAFT.  
**PROBE WEIGHT** :: 5 ounces / 142 grams  
**PROBE EXTENDED LENGTH** :: 6' / 180 cm



## B-2

OUR MEDIUM-SIZE SHOVEL WITH  
A STRONG AND PACKABLE BLADE

**WEIGHT** :: 22 ounces / 624 grams  
**HANDLE AND SHAFT LENGTH** :: 17" / 43 cm  
**BLADE DIMENSIONS** :: 10x11" / 25x28 cm  
**ASSEMBLED LENGTH** :: 24.5" / 62 cm

## B-2 EXT

EXTENDABLE, YET PACKABLE  
THE SHOVEL OF CHOICE FOR AGGRESSIVE SLEDDERS

**WEIGHT** :: 25.5 ounces / 723 grams  
**COMPRESSED HANDLE AND SHAFT LENGTH** :: 16.5" / 42 cm  
**EXTENDED HANDLE AND SHAFT LENGTH** :: 23.25" / 59 cm  
**BLADE DIMENSIONS** :: 10x11" / 25x28 cm  
**ASSEMBLED COMPRESSED LENGTH** :: 24" / 61 cm  
**ASSEMBLED EXTENDED LENGTH** :: 31" / 79 cm

## B-52

OUR BIGGEST, BADDEST DIGGING MACHINE

**WEIGHT** :: 34 ounces / 963 grams  
**BLADE DIMENSIONS** :: 11x13.25" / 28x33.5 cm  
**ASSEMBLED COMPRESSED LENGTH** :: 30" / 76 cm  
**ASSEMBLED EXTENDED LENGTH** :: 40" / 101 cm



## ARSENAL SHOVEL SYSTEM <sup>NEW</sup>

LOCKED AND LOADED FOR SAFETY

A-1 + SAW | A-1 EXT + SAW | A-1 + 240 PROBE | A-2 + 240 PROBE

A-2 + SAW | A-2 EXT + SAW

Backcountry Access invented integrated shovels and probes. We've improved on this system with our Arsenal line of shovels, probes, and saws. With BCA's Arsenal shovel systems, your snow safety weaponry is instantly accessible and fully functional at all times. Features our oval shaft and welded "neckless" blade, from the leaders in shoveling ingenuity and education.

### A-1 + 35 CM SAW

WEIGHT :: 25 ounces / 708 grams

LENGTH :: 27.75" / 65.5 cm

### A-1 EXT + 35 CM SAW

WEIGHT :: 28 ounces / 794 grams

COLLAPSED LENGTH :: 27.5" / 70 cm

EXTENDED LENGTH :: 31.75" / 80.6 cm

The ARSENAL SAW SYSTEM includes a 35 cm wood/snow saw that is stowed inside the shovel grip. Once the saw is deployed, the shovel remains fully assembled and functional: the shaft does not have to be removed from the blade and the grip is still intact. Available in four versions, including both fixed-length and extendable.



THE ARSENAL PROBE SYSTEM includes a full-length 240 cm probe that is stowed inside the shovel shaft. Like the Arsenal saw, the probe can be instantly deployed from the grip. Once the probe is deployed, the shovel is still fully functional. Available in two different blade sizes, fixed-length shaft only.

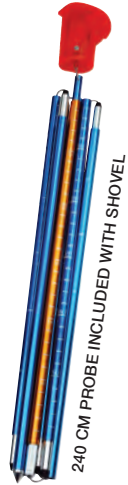


### A-1 + 240 CM PROBE

WEIGHT :: 26.5 ounces / 749 grams  
 LENGTH :: 26.25" / 66 cm

### A-2 + 240 CM PROBE

WEIGHT :: 31 ounces / 878 grams  
 LENGTH :: 27.5" / 70 cm



240 CM PROBE INCLUDED WITH SHOVEL



### A-2 + 35 CM SAW

WEIGHT :: 28 ounces / 793 grams  
 LENGTH :: 27" / 68 cm

### A-2 EXT + 35 CM SAW

WEIGHT :: 33 ounces / 935 grams  
 COLLAPSED LENGTH :: 28.5" / 72 cm  
 EXTENDED LENGTH :: 35.75" / 91 cm

## STASH HYDRATION PACKS

FREE-FLOWING HYDRATION IN ALL CONDITIONS

STASH THROTTLE™ | STASH OB™ | STASH BC™ | STASH SQUALL™ | STASH ALP 40™

Redesigned and relaunched, our new Stash line has been turning heads.

Featuring more durable materials and more helmet and ski/snowboard carrying options. Designed to meet the needs of responsible mountain riders carrying avalanche rescue equipment.

All BCA packs include freezeproof Stash hydration; underside mesh conducts body heat and traps it inside the Stash sleeve, keeping your hose and bite valve from freezing. All include hydration reservoir or Nalgene bottle-compatible system.



### STASH THROTTLE™

DESIGNED BY BIG MOUNTAIN RIDERS

**VOLUME** :: 2135 cubic inches / 35 liters

**WEIGHT** :: 54 ounces / 1530 grams

**TORSO LENGTHS** :: 17-22"

**HYDRATION** :: 100 ounces / 3 liter reservoir

**HIGHLIGHTS** :: quick access to pockets while sitting

**COLOR** :: available in black only



### STASH OB™

LOW PROFILE AND LIGHTWEIGHT FOR HIGH PERFORMANCE RIDING

**VOLUME** :: 976 cubic inches / 16 liters  
**WEIGHT** :: 35 ounces / 992 grams  
**TORSO LENGTHS** :: 15-22"  
**HYDRATION** :: 70 ounces / 2 liter reservoir  
**HIGHLIGHTS** :: thin profile, low volume, snowboard carry and Noose diagonal ski carry system.  
**COLOR** :: available in all colors



### STASH BC™

ALL-DAY BACKCOUNTRY RIDING

**VOLUME** :: 2135 cubic inches / 35 liters  
**WEIGHT** :: 54 ounces / 1530 grams  
**TORSO LENGTHS** :: 17-22"  
**HYDRATION** :: 100 ounces / 3 liter reservoir  
**HIGHLIGHTS** :: stowable helmet carry system, snowboard carry system, A-frame and Noose diagonal ski carry system  
**COLOR** :: available in all colors



### STASH SQUALL™

BARE-BONES MINIMALIST PACK

**VOLUME** :: 1647 cubic inches / 27 liters  
**WEIGHT** :: 32 ounces / 907 grams  
**TORSO LENGTHS** :: 17-22"  
**HYDRATION** :: 70 ounces / 2 liter reservoir  
**HIGHLIGHTS** :: roll top, back panel access, affordable, diagonal ski carry  
**COLOR** :: available in all colors

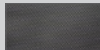


### STASH ALP 40™

PRO/GUIDING PACK

**VOLUME** :: 2440 cubic inches / 40 liters  
**WEIGHT** :: 55 ounces / 1559 grams  
**TORSO LENGTHS** :: 17-22"  
**HYDRATION** :: Nalgene-compatible system  
**HIGHLIGHTS** :: extendable/removable top lid and roll top, improved durability, side access, Nalgene bottle-compatible hydration for easy refills and cleaning, diagonal and A-frame ski carrying system.  
**COLOR** :: available in black and orange only

AVAILABLE COLORS ::



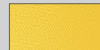
STEALTH BLACK



EMERALD BLUE



LIZARD GREEN



FLAME ORANGE

## EDUCATION AND SNOW STUDY TOOLS

ELEVATE YOUR GAME

At Backcountry Access we want our users to be prepared, knowledgeable and informed. We offer online educational resources, Beacon Training Parks, Beacon Checkers, and a full lineup of educational DVD's and handouts. Our representatives are educators and guides, not slick salespeople. We provide more than just innovative products; we provide industry-leading knowledge, research, and training.

### CALIBRATABLE DIGITAL THERMOMETER

TEMPERATURE RANGE :: -50°C to 200°C (-58°F to 392°F)

### SLOPE METER

ANGLE RANGE :: 0° - 60°

Redesigned for measuring a greater range of slope angles. Can be read from the side and above.

### 6X MAGNIFYING LOUPE

The loupe has a folding metal base with a glass lens.

### ALUMINUM CRYSTAL CARD

DIMENSIONS :: 6x4 inches / 15x10 cm

Includes snow grain classifications, slope angle map tool, and 1 mm and 3 mm grids to help you in your snowpack evaluations.

### BCA SNOW STUDY KIT

New fabric carrying case, includes all items above.

### LEXAN CRYSTAL CARD

DIMENSIONS :: 6x4 inches / 15x10 cm

Has all the same graphics as the aluminum card printed on 2mm thick Lexan. Ideal for sunny climates.

### FIELD BOOK

Developed by the American Institute for Avalanche Research and Education (AIARE), and compliant with the American Avalanche Association (AAA) SWAG standards.

### 35 CM SNOW SAW

### 2 M FIBERGLASS RULER



We designed our snow study tools in conjunction with North America's most experienced avalanche educators. Strong enough for the pros, affordable for the masses. New in 2011/12: a new slope meter design, new Lexan crystal card and a new case for our snow study kit.



For info on avalanche conditions, BCA Beacon Training Parks and where to take an avalanche course, please see: [www.backcountryaccess.com/education](http://www.backcountryaccess.com/education).



Backcountry Access, Inc.  
phone :: 303.417.1345  
email :: info@backcountryaccess.com



PHOTO: BIGSKYY.COM/THUNDERSTRUCK FILMS  
JULIO EIGUREN ROCKETS UP A VERY TIGHT CHUTE



PHOTO: BIGSKYY.COM/THUNDERSTRUCK FILMS  
KIM CARTER CARVING



PHOTO: BIGSKYY.COM/THUNDERSTRUCK FILMS  
RANDY SWENSON IN DEEP POW IN JOSS



Backcountry Access, Inc.  
2820 Wilderness Place Unit H  
Boulder, Colorado 80301 USA  
[www.backcountryaccess.com](http://www.backcountryaccess.com)