



2011/2012

AVALANCHE RESCUE EQUIPMENT

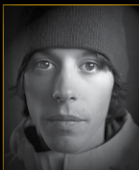




At BCA we live for riding powder, we strive to constantly develop new tools and education so others too can explore the backcountry...and live to tell about it.

We often hear stories of people being rescued with our beacons and airbags. This is by far the most rewarding part of working at BCA. We are honoring those lucky people by featuring their stories in our ads.

LIVING PROOF I knew I was buried deep. After realizing I was certainly dead, I must have passed out. Having a well-trained friend with a Tracker saved my life.
– Todd Weselake, Fernie, BC Canada



I triggered a large avalanche which pummeled me through rocks and trees and buried me. Thanks to my Tracker, I was quickly located and airlifted to the hospital, badly injured, but alive. One of my crew found me with his own Tracker—it performed flawlessly under severe stress and ultimately saved my life.
– Matt Potratz, Lewiston, ID



I descended an exposed slope in the Pyrenees when a crown broke above me. I was buried five feet deep with no air pocket. I felt like I was dying until I heard voices calling my name. I'm grateful my friends had Trackers, knew how to use them and found me so quickly.
– Fer Barrios, San Martin De Los Andes, Argentina



I was a 16-year-old kid who knew very little about the backcountry. Two years ago a BCA Tracker saved my life. I was buried for eight minutes and I was dug up by friends whom I consider family today. My goal is to become a guide so that I will have the ability to protect people like my former self. Thanks to BCA for saving my life and giving me inspiration.
– Randall Stacy, Ipswich, MA

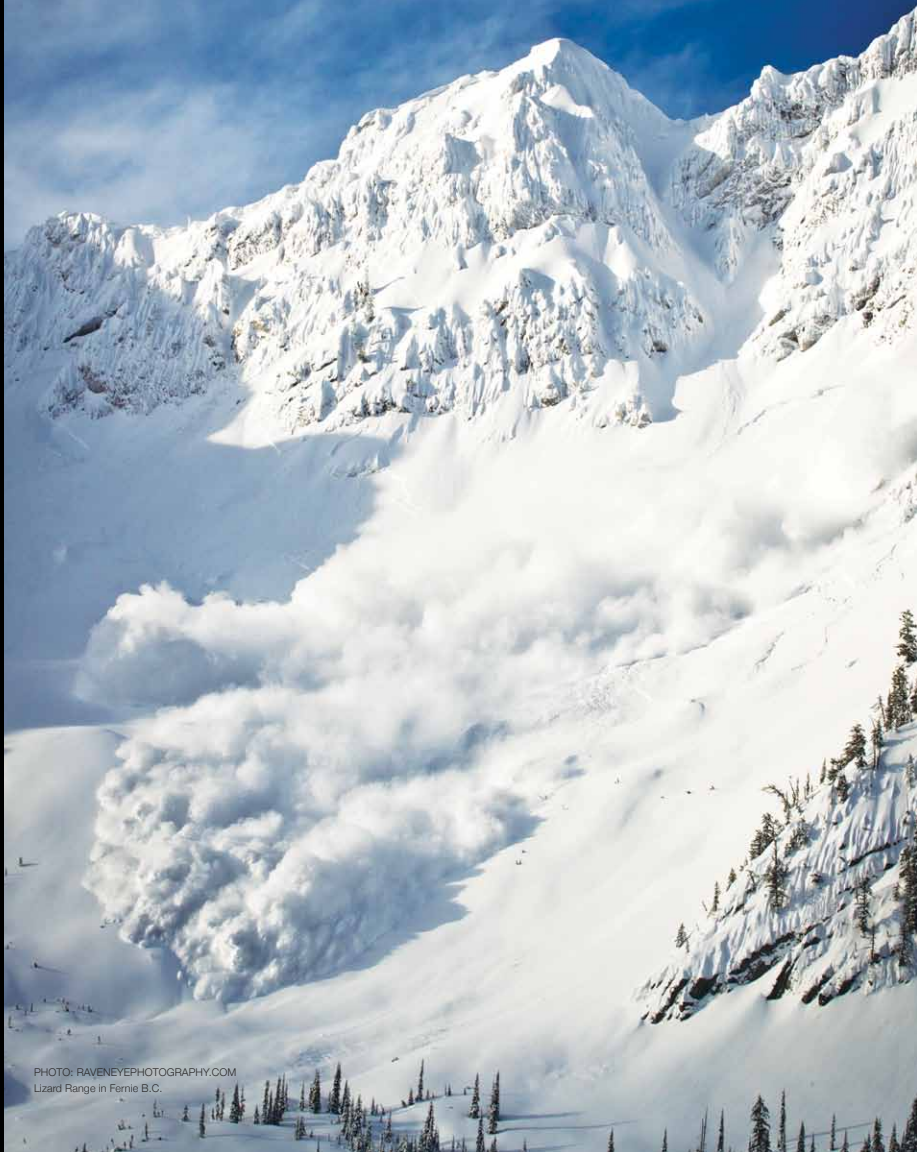


PHOTO: RAVENEYEPHOTOGRAPHY.COM
Lizard Range in Fernie B.C.



TABLE OF CONTENTS

BEACONS :: 2-3

AIRBAGS :: 4-7

PROBES :: 8-9

SHOVELS :: 10-13

STASH PACKS :: 14-15

TREKKERS AND SKINS :: 17

EDUCATIONAL AND SNOW STUDY TOOLS :: 19

EDUCATION AND AVALANCHE AWARENESS :: 20

new 2011/2012 PRODUCTS

FLOAT 18 :: 4

FLOAT 36 :: 7

BOMBER SHOVEL SERIES :: 10

ARSENAL SHOVEL SERIES :: 12

MAGIC CARPET SKINS :: 17

SNOW STUDY KIT :: 19

PHOTO: JEFF CRICCO
Pete Wurster in the Telluride backcountry, CO.

TRACKER AVALANCHE BEACONS

WHEN EASE OF USE MATTERS MOST

TRACKER2™ | TRACKER DTS™

At Backcountry Access, we create our avalanche rescue equipment from the debris pile up. When we design a product, the rescuers' needs come first. We don't create technology for technology's sake. We design our products to save real people in real avalanches. The Tracker2 is the culmination of 15 years of experience in the field.

TRACKER2™

THE FASTEST, THE EASIEST

Our Tracker2™ offers the industry's fastest, most precise pinpointing, with triple receive antenna, instantaneous real-time display, and the same easy-to-use interface as Tracker DTS™. An intuitive mechanical search/transmit switch makes it easy to use right "out of the box." Thinner profile and harness than Tracker DTS™. Includes Special Mode and multiple burial indicator lights.

WEIGHT :: 6.4 ounces / 181 grams without harness and batteries
10.4 ounces / 295 grams with harness and batteries

DIMENSIONS :: 5x3.5x1" / 13x8.5x2.5 cm

FREQUENCY :: 457 kHz

POWER SUPPLY :: Three AAA alkaline batteries

WARRANTY :: 5 years

U.S. patent numbers: 6,167,249 & 6,484,021, B



PHOTO: RYAN KOUPAL
Austin Bigret, Josh Holleb and Andy Wenberg skinning up Ala Bel Pass, Kyrgyzstan.



We've done our homework: our research shows that in real avalanches, ease of use matters most. That was the foundation of our Tracker DTS, the world's first digital transceiver. The results speak for themselves. Our Trackers are the most trusted and widely used beacons of all time. And more importantly, they have saved scores of lives.

TRACKER DTS™

THE WORLD'S FIRST DIGITAL AVALANCHE BEACON

Tracker DTS™ is the most established and widely used beacon on the market because of its rapid processor and simple user interface. A real-time, digital display shows both direction and distance with bright red LEDs (light emitting diodes). The distance is shown in meters and indicator lights display the direction of transmitting beacons. As the world's most widely used transceiver, the Tracker has established a strong reputation for durability and reliability. A carrying case and harness are included.

WEIGHT :: 8.6 ounces / 245 grams without harness and batteries
13.6 ounces / 385 grams with harness and batteries

DIMENSIONS :: 5.2x3.4x1" / 13.2x8.6x2.5 cm

FREQUENCY :: 457 kHz

POWER SUPPLY :: Three AAA alkaline batteries

WARRANTY :: 5 years

U.S. patent numbers: 6,167,249 & 6,484,021, B1



PHOTO: TIM MACKENZIE
Tim Mackenzie Summit of Treble Cone, Lake Wanaka, New Zealand.

FLOAT AVALANCHE AIRBAGS

STAY AFLOAT

FLOAT 18™ | FLOAT 30™ | FLOAT 36™

Excavation time is by far the biggest contributing factor in avalanche fatalities.*

Our Float avalanche airbags are designed to minimize excavation time by preventing burial. These are the first airbags that are both affordable and easy to use and reuse. A wide network of BCA-authorized refill centers provides unmatched service to Float purchasers. A small 2,700-psi (186 bar) compressed-air cylinder, single-chamber 150-liter airbag, and super efficient venturi system make the Floats easier to carry, repack and refill than European systems.



new On all of our Float packs, the new EZ Pull trigger is easier to grab and deploy.

FLOAT 18™ **new**

OUR MINIMALIST MODEL FOR OUT-OF-BOUNDS, OFF-PISTE, FREERIDE AND MECHANIZED SKIING

Thin profile and lightweight; enough volume to carry rescue tools, lunch, water, and an extra layer. Features internal shovel/probe pockets, helmet and diagonal ski carrying system, waist belt pockets, and optional snowboard attachment kit (sold as accessory).

PACK VOLUME :: 1010 cubic inches / 18 liters

WEIGHT :: 6.5 pounds / 2948 grams (system)
3 pounds / 1360 grams (pack only)

TORSO LENGTHS :: 17-22"

U.S. patent: #7,878,141



*Digging Deeper: The Real Issues in North American Avalanche Burials found online at backcountryaccess.com/research.



FLOAT AVALANCHE AIRBAGS



FLOAT 30™

Our mid-sized pack for half and full days. Features external shovel and probe pockets, diagonal ski carrying system, helmet carry system, waist belt pockets, lined goggle pocket, hydration sleeve, and optional snowboard attachment kit (sold as accessory).

PACK VOLUME :: 1830 cubic inches / 30 liters

WEIGHT :: 8 pounds / 3629 grams (system)

4.5 pounds / 2041 grams (pack only)

TORSO LENGTHS :: 17-22"

U.S. patent: #7,878,141

PHOTO: MARK RIKKERS, TELLURIDE HELITRAX
West Badger slide path in Ophir, CO.



FLOAT AVALANCHE AIRBAGS



FLOAT 36™ new

Designed for pros, guides, and dedicated backcountry junkies carrying the full quiver of essentials. Larger and lighter than the Float 30™, Includes big volume, load lifters, back panel access, internal shovel/probe pockets, waist belt pockets, ski and snowboard carry system, lined goggle pocket, and hydration sleeve.

PACK VOLUME :: 2197 cubic inches / 36 liters

WEIGHT :: 7.7 pounds / 3492 grams (system)
4.2 pounds / 1905 grams (pack only)

TORSO LENGTHS :: 17-22"

U.S. patent: #7,878,141



PHOTO: ANDREW DIMMEN
Bryan Feinstein rappelling into Apocalypse Couloir on
Prospectors Mountain in Grand Teton National Park.



PHOTO: JEFF CRICCO
Pete Wurster in the Vail backcountry, CO.

AVALANCHE PROBES

EVERY SECOND COUNTS

SPOT 203 | PROFILE 240 | SR3 | CARBON 260 | CARBON 340

Our Quickie system is the fastest and most intuitive probe tensing hardware in the industry. All BCA probes come with depth markings in one-centimeter increments. Now with grip tape and coated cable for the quickest draw in the West.

SPOT 203

COMPACT, AFFORDABLE, FAST

WEIGHT :: 8.5 ounces / 241 grams
EXTENDED LENGTH :: 6' 8" / 203 cm
COLLAPSED LENGTH :: 13" / 33 cm
DIAMETER :: .43" / 1.1 cm

PROFILE 240

OUR MAINSTREAM, TOP-SELLING PROBE

WEIGHT :: 9 ounces / 255 grams
EXTENDED LENGTH :: 7' 11" / 240 cm
COLLAPSED LENGTH :: 18" / 45.75 cm
DIAMETER :: .43" / 1.1 cm

SR3

OUR BURLIEST PROBE, FOR PROFESSIONALS AND PEOPLE WHO PREFER LONGER PROBES

WEIGHT :: 12 ounces / 340 grams
EXTENDED LENGTH :: 9' 8" / 300 cm
COLLAPSED LENGTH :: 19" / 48 cm
DIAMETER :: .49" / 1.24 cm

CARBON 260

SUPER LIGHT, YET FULL LENGTH

WEIGHT :: 7.5 ounces / 213 grams
EXTENDED LENGTH :: 8' 6" / 260 cm
COLLAPSED LENGTH :: 16.5" / 42 cm
DIAMETER :: .403" / 1 cm

CARBON 340

OUR LONGEST, FOR THOSE WHO PREFER LONGER PROBES

WEIGHT :: 11.5 ounces / 326 grams
EXTENDED LENGTH :: 11' 2" / 340 cm
COLLAPSED LENGTH :: 18.5" / 47 cm
DIAMETER :: .5" / 1.3 cm

**exceptional weight-to-length ratio*



SPOT
203

PROFILE
240

CARBON
260

SR3

CARBON
340



PHOTO: TIM MACKENZIE
Amy Macdonald and Anna Cameron hiking through native
New Zealand beech forest at Broken River, Canterbury, New Zealand.

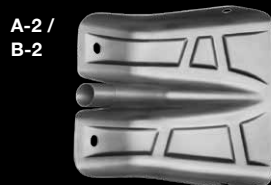
BOMBER AVALANCHE SHOVELS new

DIG HARD. PACK SMALL.

B-1 | B-1 EXT | B-1 SYSTEM | B-2 | B-2 EXT | B-52

We've upped the ante in 2011-12 with a bombproof new lineup of shovels. They feature our oval shaft with a more packable "neckless" blade, new ergonomic grip, super-strong torsional rigidity and an eye catching industrial design. From the leaders in shoveling ingenuity and education.

NEW SHOVEL BLADE SIZES AND DESIGNS FOR THE ARSENAL AND BOMBER LINES.



For the latest on strategic shoveling technique and research, visit
www.backcountryaccess.com/shoveling.

B-1

WORLD'S LIGHTEST AVALANCHE SHOVEL NOW WITH THE STRONGEST BLADE ON THE MARKET

WEIGHT :: 18.5 ounces / 525 grams

HANDLE AND SHAFT LENGTH :: 16" / 40.5 cm

BLADE DIMENSIONS :: 9x10" / 23x25.5 cm

ASSEMBLED LENGTH :: 22.5" / 57 cm

B-1 EXT

EXTENDABLE HANDLE WITH UNBEATABLE STRENGTH-TO-WEIGHT RATIO

WEIGHT :: 21 ounces / 595 grams

BLADE DIMENSIONS :: 9x10" / 23x25.5 cm

COMPRESSED HANDLE AND SHAFT LENGTH :: 16" / 40.5 cm

EXTENDED HANDLE AND SHAFT LENGTH :: 22.25" / 56.5 cm

ASSEMBLED COMPRESSED LENGTH :: 22.5" / 57 cm

ASSEMBLED EXTENDED LENGTH :: 28.75" / 73 cm

B-1 SYSTEM WITH PROBE

WORLD'S LIGHTEST, MOST COMPACT SHOVEL AND PROBE COMBINATION

WEIGHT :: 24.0 ounces / 680 grams

HANDLE AND SHAFT LENGTH :: 17" / 43 cm

BLADE DIMENSIONS :: 9x10" / 23x25.5 cm

ASSEMBLED LENGTH :: 24" / 61 cm

INCLUDES INTEGRATED B-1 PROBE IN SHAFT.

PROBE WEIGHT :: 5 ounces / 142 grams

PROBE EXTENDED LENGTH :: 6' / 180 cm

B-2

OUR MEDIUM-SIZE SHOVEL WITH A STRONG AND PACKABLE BLADE

WEIGHT :: 22 ounces / 624 grams

HANDLE AND SHAFT LENGTH :: 17" / 43 cm

BLADE DIMENSIONS :: 10x11" / 25x28 cm

ASSEMBLED LENGTH :: 24.5" / 62 cm



B-2 EXT

EXTENDABLE, YET PACKABLE FOR THOSE AS SERIOUS ABOUT SHOVELING AS US

WEIGHT :: 25.5 ounces / 723 grams

COMPRESSED HANDLE AND SHAFT LENGTH :: 16.5" / 42 cm

EXTENDED HANDLE AND SHAFT LENGTH :: 23.25" / 59 cm

BLADE DIMENSIONS :: 10x11" / 25x28 cm

ASSEMBLED COMPRESSED LENGTH :: 24" / 61 cm

ASSEMBLED EXTENDED LENGTH :: 31" / 79 cm

B-52

OUR BIGGEST, BADDEST DIGGING MACHINE

WEIGHT :: 34 ounces / 963 grams

BLADE DIMENSIONS :: 11x13.25" / 28x33.5 cm


ASSEMBLED COMPRESSED LENGTH :: 30" / 76 cm

ASSEMBLED EXTENDED LENGTH :: 40" / 101 cm

ARSENAL SHOVEL SYSTEM ^{new}

LOCKED AND LOADED FOR SAFETY

A-1 + SAW | A-1 EXT + SAW | A-1 + 240 PROBE | A-2 + 240 PROBE | A-2 + SAW | A-2 EXT + SAW



Backcountry Access invented integrated shovels and probes. THE ARSENAL PROBE SYSTEM includes a full-length 240 cm probe that is stowed inside the shovel shaft. Like the Arsenal saw, the probe can be instantly deployed from the grip. Once the probe is deployed, the shovel is still fully functional. Available in A-1 and A-2 blade sizes, fixed-length shaft only.




PHOTO: STEVE CHRISTIE
Larry Goldie in a snow pit, Mazama backcountry, WA.

The ARSENAL SAW SYSTEM includes a 35 cm wood/snow saw that is stowed inside the shovel grip. Once the saw is deployed, the shovel remains fully assembled and functional: the shaft does not have to be removed from the blade and the grip is still intact. Available in four versions, A-1 and A-2 blade, and fixed-length or extendable.

A-1 + 35 CM SAW

WEIGHT :: 25 ounces / 708 grams
LENGTH :: 27.75" / 65.5 cm
BLADE DIMENSIONS :: 9x10" / 23x25.5 cm

A-1 EXT + 35 CM SAW

WEIGHT :: 28 ounces / 794 grams
COLLAPSED LENGTH :: 27.5" / 70 cm
EXTENDED LENGTH :: 31.75" / 80.6 cm
BLADE DIMENSIONS :: 9x10" / 23x25.5 cm

A-2 + 35 CM SAW

WEIGHT :: 28 ounces / 793 grams
LENGTH :: 27" / 68 cm
BLADE DIMENSIONS :: 10x11" / 25x28 cm

A-2 EXT + 35 CM SAW

WEIGHT :: 33 ounces / 935 grams
COLLAPSED LENGTH :: 28.5" / 72 cm
EXTENDED LENGTH :: 35.75" / 91 cm
BLADE DIMENSIONS :: 10x11" / 25x28 cm

A-1 + 240 CM PROBE

WEIGHT :: 26.5 ounces / 749 grams
LENGTH :: 26.25" / 66 cm
BLADE DIMENSIONS :: 9x10" / 23x25.5 cm

A-2 + 240 CM PROBE

WEIGHT :: 31 ounces / 878 grams
LENGTH :: 27.5" / 70 cm
BLADE DIMENSIONS :: 10x11" / 25x28 cm





STASH HYDRATION PACKS

FREE-FLOWING HYDRATION IN ALL CONDITIONS

STASH THROTTLE™ | STASH OB™ | STASH BC™ | STASH SQUALL™ | STASH ALP 40™

Redesigned and relaunched, our new Stash line has been turning heads.

Featuring more durable materials and more helmet and ski/snowboard carrying options. Designed to meet the needs of responsible mountain riders carrying avalanche rescue equipment.

All BCA packs include freezeproof Stash hydration; underside mesh conducts body heat and traps it inside the Stash sleeve, keeping your hose and bite valve from freezing. All include hydration reservoir or Nalgene bottle-compatible system. And if that's not enough, our packs carry your skis and boards anywhere you want to go with our Noose carry system and snowboard carry options.



STASH BC™

ALL-DAY; DO ANYTHING

VOLUME :: 2135 cubic inches / 35 liters

WEIGHT :: 54 ounces / 1530 grams

TORSO LENGTHS :: 17-22"

HYDRATION :: 100 ounces / 3 liter reservoir

HIGHLIGHTS :: stowable helmet carry system, snowboard carry system, A-frame and Noose diagonal ski carry system

COLOR :: available in all colors



PHOTO: JEFF CRICCO
Mike Barnett skiing the Gore Range with a Stash BC™



STASH OB™

LOW PROFILE AND LIGHTWEIGHT

VOLUME :: 976 cubic inches / 16 liters

WEIGHT :: 35 ounces / 992 grams

TORSO LENGTHS :: 15-22"

HYDRATION :: 70 ounces / 2 liter reservoir

HIGHLIGHTS :: thin profile, low volume, snowboard carry and Noose diagonal ski carry system.

COLOR :: available in all colors



STASH SQUALL™

BARE-BONES MINIMALIST PACK

VOLUME :: 1647 cubic inches / 27 liters

WEIGHT :: 32 ounces / 907 grams

TORSO LENGTHS :: 17-22"

HYDRATION :: 70 ounces / 2 liter reservoir

HIGHLIGHTS :: roll top, back panel access, affordable, diagonal ski carry

COLOR :: available in all colors



STASH ALP 40™

PRO/GUIDING/DIEHARD PACK

VOLUME :: 2440 cubic inches / 40 liters

WEIGHT :: 55 ounces / 1559 grams

TORSO LENGTHS :: 17-22"

HYDRATION :: Nalgene-compatible system

HIGHLIGHTS :: extendable/removable top lid and roll top, improved durability, side access, Nalgene bottle-compatible hydration for easy refills and cleaning, diagonal and A-frame ski carrying system.

COLOR :: available in black and orange only

AVAILABLE COLORS ::



STEALTH BLACK



EMERALD BLUE



LIZARD GREEN



FLAME ORANGE



TREKKERS AND SKINS

ACCESS THE GOODS

ALPINE TREKKER | TREKKER JR. | TREKKER CRAMPON | BCA MAGIC CARPET SKINS

The higher you climb the greater the reward. BCA's Alpine Trekkers and Magic Carpet climbing skins ensure easy access to your favorite backcountry hideouts. The Trekkers are a must-have for those looking to break into the touring scene and for hard-charging skiers wanting the performance and reliability of their full alpine binding on burly descents. Throw these into the mix with BCA's Magic Carpet skins and the possibilities are waist deep.

ALPINE TREKKER

FITS INTO STANDARD ALPINE BINDINGS FOR THE ASCENT. REMOVED PRIOR TO SKIING DOWNHILL.

WEIGHT PER PAIR :: 2 pounds, 11 ounces / 1228 grams

SIZING :: 240-355mm (one size fits all)

CLIMBING BAR HEIGHT :: 1.25 inches / 3.2 cm
or 1.75 inches / 4.5 cm

TREKKER JR.

THE TREKKER JR. IS CONFIGURED TO FIT MONDO SIZE 22 AND UP.

TREKKER CRAMPON

AVAILABLE SIZES :: standard-70 mm
fat-90 mm

Available as an accessory. Readily attaches to bottom of Trekker toe piece to prevent a slide for life on hard snow.



BCA MAGIC CARPET SKINS new

AVAILABLE WIDTHS :: 100 mm, 110 mm,
120 mm, 130 mm, 140 mm, 150 mm

We've overhauled our skin program with all new suppliers, new material, new glue, and stylish new graphics. Our skins are killer! Designed to accommodate the widest and most rockered freeride skis, the glide on these skins will make you feel like you're riding up the skin track on a magic carpet.

Includes water repellent Nylon plush and new glue formulated for cold North American temperatures.

Our tip and tail hardware is compatible with most ski designs, including rounded twin-tip designs. The included trim kit gives you the tools you need to cut your skins to fit any sidecuts.





PHOTO: RYAN KROUPAL
Ellis Smith and Andy Wenberg in the Ichke Jergez backcountry, Kyrgyzstan.

EDUCATION AND SNOW STUDY TOOLS

ELEVATE YOUR GAME

We designed our snow study tools in conjunction with North America's most experienced avalanche educators. Strong enough for the pros, affordable for the masses. New in 2011/12: a new slope meter design, new Lexan crystal card and a new case for our snow study kit.

CALIBRATABLE DIGITAL THERMOMETER

TEMPERATURE RANGE :: -50°C to 200°C (-58°F to 392°F)

SLOPE METER

ANGLE RANGE :: 0° - 60°

Redesigned for measuring a greater range of slope angles. Can be read from the side and above. Doubles as scraper.

6X MAGNIFYING LOUPE

The loupe has a folding metal base with a glass lens.

ALUMINUM CRYSTAL CARD

DIMENSIONS :: 6x4 inches / 15x10 cm

Includes snow grain classifications, slope angle map tool, and 1 mm and 3 mm grids to help you in your snowpack evaluations.

BCA SNOW STUDY KIT

New fabric carrying case, includes all items above.

LEXAN CRYSTAL CARD

DIMENSIONS :: 6x4 inches / 15x10 cm

Has all the same graphics as the aluminum card printed on 2mm thick Lexan. Ideal for sunny climates.

FIELD BOOK

Developed by the American Institute for Avalanche Research and Education (AIARE), and compliant with the American Avalanche Association (AAA) SWAG standards.

35 CM SNOW SAW

2 M FIBERGLASS RULER



For info on avalanche conditions, BCA Beacon Training Parks and where to take an avalanche course, please see: www.backcountryaccess.com/education.

EDUCATION AND AVALANCHE AWARENESS

THE SINGLE MOST IMPORTANT AVALANCHE SAFETY TOOL: YOUR MIND.

At Backcountry Access we want our users to be prepared, knowledgeable and informed. We offer online educational resources, Beacon Training Parks, Beacon Checkers, and a full lineup of educational displays, DVD's and handouts. Our tech reps are educators, guides, and patrollers, not slick salespeople. We provide more than just innovative products; we provide industry-leading knowledge, research, and training.

EDUCATIONAL DVDs

THE FINE LINE

FROM ROCKY MOUNTAIN SHERPAS

The greatest snow sports athletes join North America's leading avalanche professionals to bring you a new movement in avalanche education. Includes a rowdy feature film (57 minutes) and four training films about understanding avalanche bulletins, choosing terrain, predicting avalanches, and emergency self rescue.

TAKE CHARGE: LEADING A COMPANION RESCUE FROM BCA AND TGR

Learn how to organize and execute a fast avalanche rescue. Take Charge is an instructional video that demonstrates how to perform a step-by-step avalanche rescue. Focuses on beacon, probe, shovel, and leadership skills (18 minutes).

BEACON TRAINING PARKS

These training devices are located in almost 100 locations around the world! Users can practice searching in different scenarios without having to bury or dig up transmitters. The training parks have up to eight transmitters that can be turned on and off depending on the desired complexity.

Locations of our beacon training parks can be found online at www.backcountryaccess.com/trainingparks.



BEACON CHECKER

The BCA Beacon Checker is an exciting new product that not only ensures safety, but promotes the use of avalanche transceivers. This compact and weatherproof box is mounted at backcountry access points, ski patrol headquarters, alpine huts and other areas where transceivers are used. Tracker technology inside detects whether the closest user's beacon is transmitting. This is indicated with a green "O" or red "X". Includes a sensitivity control, dimmer, audible buzzer, and outputs for gate latches and other mechanical devices. Includes signage and complete installation manual. Great for promoting beacon use in your area!

Additional information about our education and awareness program efforts can be found online at www.backcountryaccess.com/education.





PHOTO: JEFF CRICCO
Rete Wurster riding in the Gore Range backcountry, CO.



PHOTO: ANDREW DIMMEN
Joe Brannen and Jordan White returning from a trip to ski the Snake Couloir on Mount Sheffels CO.

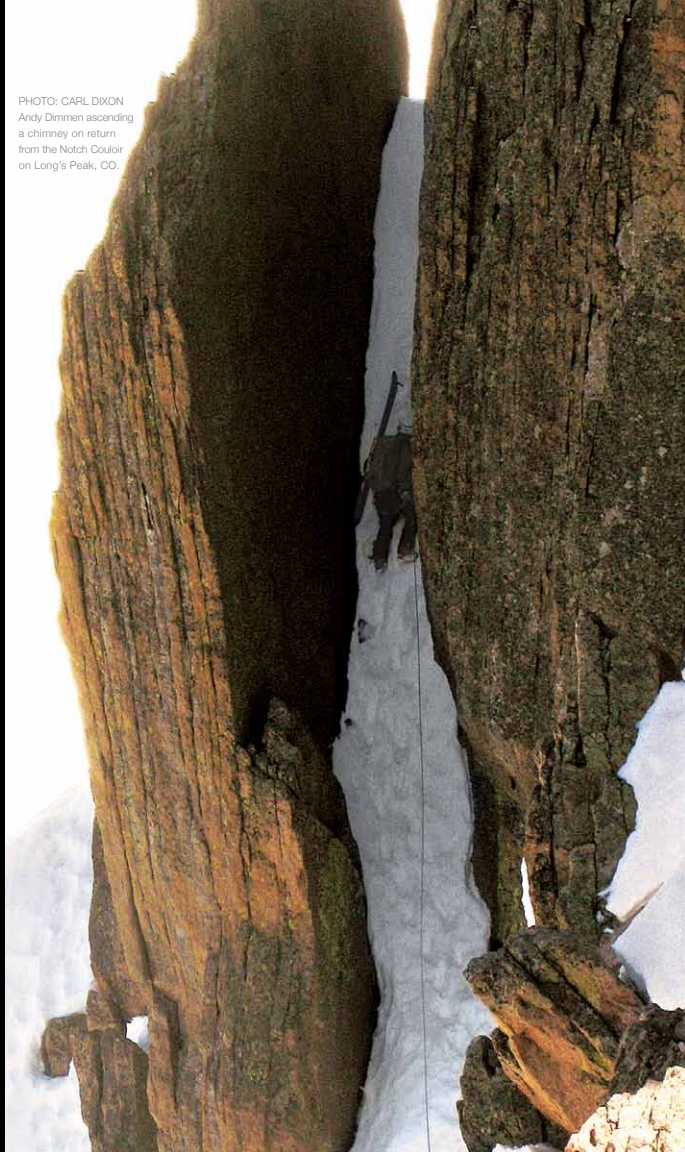


PHOTO: CARL DIXON
Andy Dimmen ascending
a chimney on return
from the Notch Couloir
on Long's Peak, CO.



BACKCOUNTRY ACCESS, INC.
2820 Wilderness Place Unit H
Boulder, Colorado 80301 USA
phone :: 303.417.1345
email :: info@backcountryaccess.com
www.backcountryaccess.com

FRONT COVER PHOTO: GRANT GUNDERSON
Cody Townsend on Mt. Baker, backcountry, WA

BACK COVER PHOTO: ANDREW DIMMEN
Dave Bourassa skiing on Buffalo Pass, Steamboat, CO