



Backcountry Access

At BCA we live for riding powder. We strive to constantly develop new rescue tools and advances in avalanche education so others can also explore the backcountry...and live to tell about it. Our mission to help you to stay safe and have fun—in that order—has led BCA to become the most trusted name in snow safety. Hang with us and you'll stay ahead of the curve.

Our equipment is not a substitute for knowledge and education. For information on avalanche safety, courses, and conditions, please see: www.backcountryaccess.com/education.

Table of Contents

FLOAT SYSTEMS	1
BEACONS	4
SHOVELS	6
PROBES	8
STASH PACKS	10
SKINS & ALPINE TREKKERS	12
EDUCATION + SNOW STUDY TOOLS	13


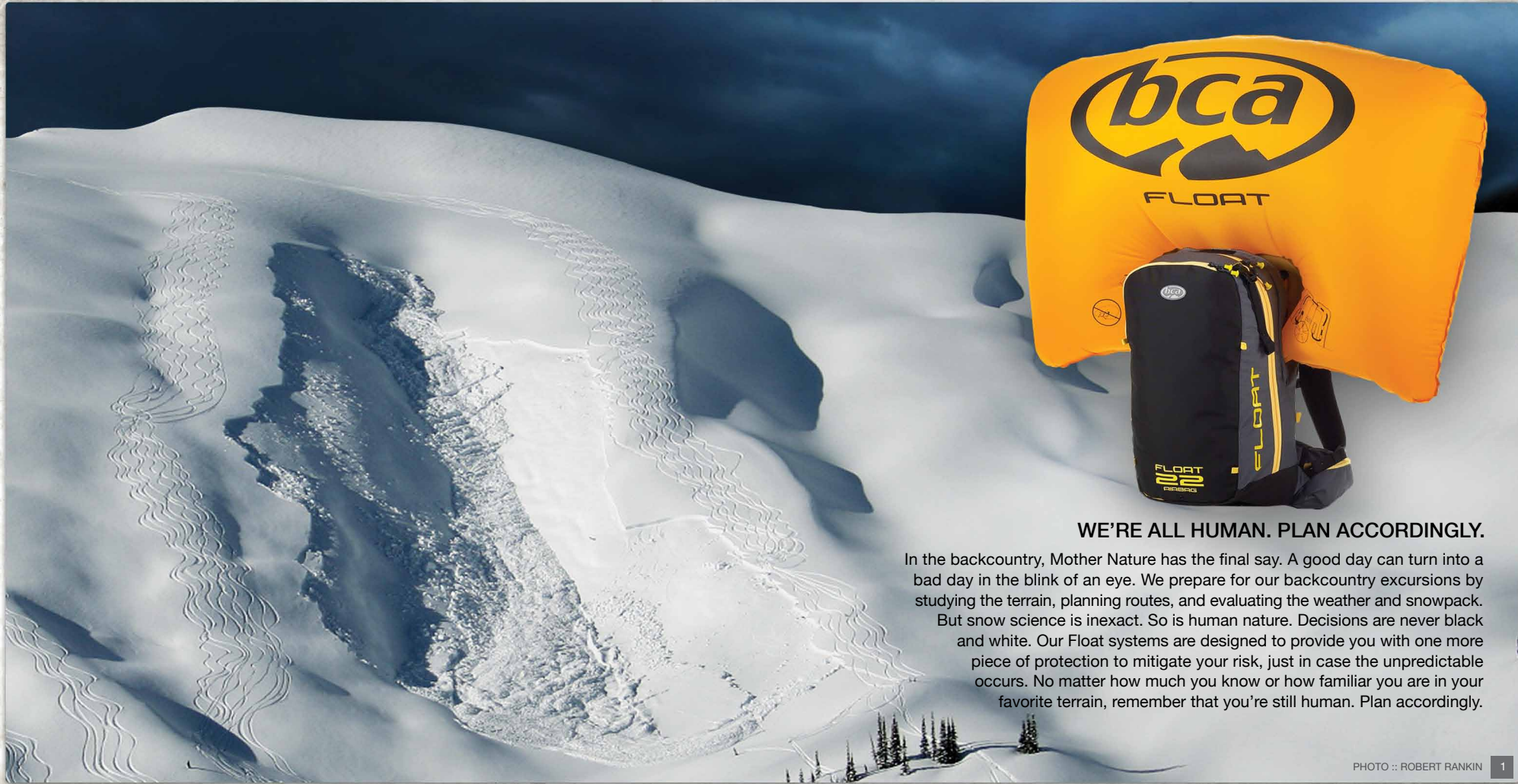
 **LIVING PROOF** *Saving lives is what it's all about at BCA. To read about success stories with our equipment, please go to: www.backcountryaccess.com/rescues*

PHOTO :: RYAN KOUPAL



FLOAT SYSTEMS — *Stay afloat*



WE'RE ALL HUMAN. PLAN ACCORDINGLY.

In the backcountry, Mother Nature has the final say. A good day can turn into a bad day in the blink of an eye. We prepare for our backcountry excursions by studying the terrain, planning routes, and evaluating the weather and snowpack. But snow science is inexact. So is human nature. Decisions are never black and white. Our Float systems are designed to provide you with one more piece of protection to mitigate your risk, just in case the unpredictable occurs. No matter how much you know or how familiar you are in your favorite terrain, remember that you're still human. Plan accordingly.

FLOAT SYSTEMS — Stay afloat

BCA Float systems are now the **lightest** and most **affordable** avalanche airbags on the market. The airbag, ejector, and cylinder, are fully **interchangeable** between our 2012/13 models. Systems use 2,700 psi compressed air, single-chamber airbag and patented super-efficient venturi system.

FLOAT SYSTEM TIP: Practice deploying your Float system before heading into avalanche terrain. This will ensure you are familiar with the trigger location and pull force needed to deploy the bag. Make sure to refill the cylinder after practicing.



blue/yellow

new FLOAT 22™

Our minimalist model for out-of-bounds, off-piste, freeride and mechanized skiing/riding.

Thin profile and lightweight; enough volume to carry rescue tools, lunch, water and extra layers. Features new dedicated shovel/probe pocket, helmet and diagonal ski carrying system, and waist belt pocket.

PACK VOLUME :: 1,343 cubic inches / 22 liters

WEIGHT :: 5.5 pounds / 2,495 grams (entire system including cylinder)

4.2 pounds / 1,905 grams (pack, airbag, engine, no cylinder)

2.45 pounds / 1,111 grams (pack only, no airbag, engine or cylinder)

COLOR :: available in blue/yellow and black

U.S. patent: #7,878,141

*Cylinders are sold separately. *Optional snowboard carry attachment sold as accessory.



new FLOAT 32™

Designed for pros, guides, and dedicated backcountry junkies carrying all the essentials.

Includes big volume, load lifters, new dedicated shovel/probe pocket and waist belt pocket. Trigger can be set for the left or right shoulder strap, and hydration can be routed through the other side.

PACK VOLUME :: 1,593 cubic inches / 32 liters

WEIGHT :: 6.4 pounds / 2,903 grams (entire system including cylinder)

5.1 pounds / 2,313 grams (pack, airbag, engine, no cylinder)

3.4 pounds / 1,542 grams (pack only, no airbag, engine or cylinder)

COLOR :: black/red

U.S. patent: #7,878,141

*Cylinders are sold separately. *Optional snowboard carry attachment sold as accessory.

Check out our Float 22 Throttle, specific to snowmobilers.
Only available with trigger on right side:
www.backcountryaccess.com/float



FLOAT COMPRESSED AIR CYLINDER

Sold separately. Includes Consumer Refill Kit.

The Float cylinder is the power and driving force behind our Float system. When the Float trigger is pulled, it activates the release of 2,700 psi of compressed air, inflating the airbag. Always make sure your cylinder is full and hooked up correctly before heading out.

WEIGHT :: 1.3 pounds / 590 grams (full cylinder)

★ *BCA has a rapidly expanding network of convenient Float refill and cylinder exchange centers. For a complete list, go to: www.backcountryaccess.com/refillcenters*

★ *For cylinder refill instructions, visit: backcountryaccess.com/customer-service*

FLOAT SYSTEMS — Stay afloat



SNOWBOARD CARRY ATTACHMENT

Attaches to back panel on all Float models.
Carries snowboard horizontally.



EXTENSION STRAP KIT

Includes extension waist belt, sternum strap, and leg loop.



CONSUMER REFILL KIT

Included with each cylinder.

INCLUDES :: Allen wrench, O-ring pick, grease and five O-rings.



REPACKING TIP:

Use an accordion method to correctly fold the airbag.
Full repacking instructions: www.backcountryaccess.com/repack

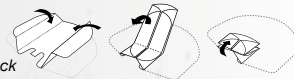


PHOTO :: RYAN KOUPAL

TRACKER AVALANCHE BEACONS — *When ease of use matters most*

Keeping calm in the event of an avalanche can determine the difference between a successful and unsuccessful rescue. That's why we've designed Tracker avalanche beacons to be **cool under pressure**. We've done our research and found that in real avalanches, ease of use matters most. This means using a beacon that gives you a clear distance and direction no matter how fast you're moving—and no matter how many signals or how much noise is out there. Trackers are engineered to keep you searching and always moving, even in the most complex of rescue scenarios.



TRACKER2™

North America's best-selling avalanche transceiver.

Our Tracker2™ offers the industry's fastest, most precise pinpointing, with triple receive antenna, instantaneous real-time display, and the same easy-to-use interface as Tracker DTS™. An intuitive mechanical search/transmit switch makes it easy to use right "out of the box." Thinner profile and harness than Tracker DTS.™ Includes Special Mode and multiple burial indicator lights.

WEIGHT :: 8.7 ounces / 248 grams
includes batteries, not harness

DIMENSIONS :: 5 x 3.5 x 1" / 13 x 8.5 x 2.5 cm

FREQUENCY :: 457 kHz

POWER SUPPLY :: Three AAA alkaline batteries

WARRANTY :: 5 years

All beacons include harness and batteries.
U.S. patent numbers: 6,167,249 & 6,484,021, B





TRACKER DTS™

The world's first digital multi-antenna transceiver.

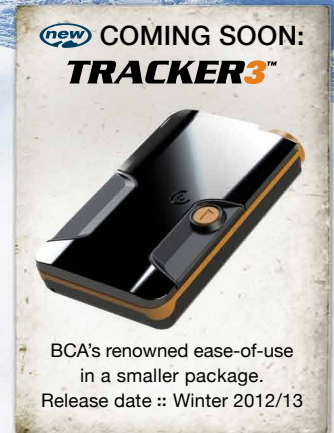
Tracker DTS™ is the most trusted and widely used beacon on the market because of its rapid processor and efficient user interface. A real-time, digital display shows both direction and distance with bright red LEDs. The distance is shown in meters and indicator lights display the direction of transmitting beacons. As the world's most widely used transceiver, the Tracker has established a strong reputation for durability and reliability.

- WEIGHT** :: 9 ounces / 257 grams
includes batteries, not harness
- DIMENSIONS** :: 5.2 x 3.4 x 1" / 13.2 x 8.6 x 2.5 cm
- FREQUENCY** :: 457 kHz
- POWER SUPPLY** :: Three AAA alkaline batteries
- WARRANTY** :: 5 years

All beacons include harness and batteries.
U.S. patent numbers: 6,167,249 & 6,464,021, B1

★ **BEACON TIP:** Always perform a trailhead beacon check to make sure that all members in your party are transmitting before heading out.

▶ Dial in your beacon searching skills by watching our video at: backcountryaccess.com/education

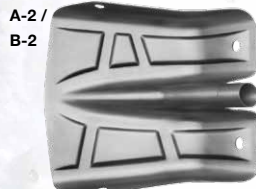


BCA's renowned ease-of-use
in a smaller package.
Release date :: Winter 2012/13

AVALANCHE SHOVELS — Dig hard. Pack small.

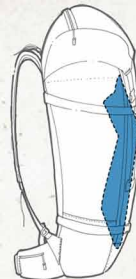
Our Bomber, Arsenal, and new Dozer shovels feature an oval shaft with a more packable, bombproof, "ferrule-less" blade, ergonomic grip and T6 heat treatment. All BCA shovels boast an off-the-chart strength to weight ratio, while taking up minimal storage space in your pack.

Available shovel blade sizes.



See how a ferrule-less blade is more packable than other designs.

EXCELLENT



POOR

POOR

AVALANCHE SHOVELS — Dig hard. Pack small.



B-1

The lightest and most compact BCA shovel.

Fixed-length shaft, B-1 probe fits inside.

WEIGHT :: 1.2 pounds / 525 grams

BLADE DIMENSIONS :: 9 x 10" / 23 x 25.5 cm

HANDLE AND SHAFT LENGTH :: 17" / 43.2 cm

ASSEMBLED LENGTH :: 22.5" / 57 cm



B-1 EXT

Light and bombproof, our best-selling Bomber shovel lives up to its name.

Extendable handle and unbeatable strength-to-weight ratio.

WEIGHT :: 1.3 pounds / 595 grams

BLADE DIMENSIONS :: 9 x 10" / 23 x 25.5 cm

COLLAPSED HANDLE & SHAFT LENGTH :: 16" / 40.5 cm

EXTENDED HANDLE & SHAFT LENGTH :: 22.25" / 56.5 cm

ASSEMBLED COLLAPSED LENGTH :: 22.5" / 57 cm

ASSEMBLED EXTENDED LENGTH :: 28.75" / 73 cm



A-2 EXT WITH SAW

Locked and loaded for safety.

Wood/snow saw stows in shaft. Arsenal shovel is functional even when the saw is deployed.

WEIGHT :: 1.9 lbs / 880 g

COLLAPSED HANDLE & SHAFT LENGTH :: 17" / 43 cm

EXTENDED HANDLE & SHAFT LENGTH :: 23.5" / 60 cm

ASSEMBLED COLLAPSED LENGTH :: 24" / 61 cm

ASSEMBLED EXTENDED LENGTH :: 30.5" / 77.5 cm

SAW BLADE LENGTH :: 11.5" / 29 cm

SAW TOTAL LENGTH :: 16.25" / 41 cm



B-2 EXT

Extendable and packable.

The ultimate tool for those as serious about digging and snow safety as we are.

WEIGHT :: 1.6 pounds / 723 grams

BLADE DIMENSIONS :: 10 x 11" / 25 x 28 cm

COLLAPSED HANDLE & SHAFT LENGTH :: 16.5" / 42 cm

EXTENDED HANDLE & SHAFT LENGTH :: 23.25" / 59 cm

ASSEMBLED COLLAPSED LENGTH :: 24" / 61 cm

ASSEMBLED EXTENDED LENGTH :: 31" / 79 cm



B-52

Our biggest, baddest digging machine.

For mechanized and industrial use.

WEIGHT :: 2.1 pounds / 963 grams

BLADE DIMENSIONS :: 11 x 13.25" / 28 x 33.5 cm

COLLAPSED HANDLE & SHAFT LENGTH :: 21" / 53 cm

EXTENDED HANDLE & SHAFT LENGTH :: 30.5" / 77.5 cm

ASSEMBLED COLLAPSED LENGTH :: 30" / 76 cm

ASSEMBLED EXTENDED LENGTH :: 40" / 101 cm



new D-2 EXT

Dig like a machine.

Inspired by modern leashless ice tools, the Dozer is the most effective hoe shovel available; with positive slip-proof grips on both the shaft and blade. Easily converts to traditional shovel.

WEIGHT :: 2 pounds / 936 grams

BLADE DIMENSIONS :: 10 x 11" / 25 x 28 cm

COLLAPSED HANDLE & SHAFT LENGTH :: 18" / 46 cm

EXTENDED HANDLE & SHAFT LENGTH :: 24" / 61 cm

ASSEMBLED COLLAPSED LENGTH :: 24.6" / 62.6 cm

ASSEMBLED EXTENDED LENGTH :: 31.9" / 81.1 cm



TIP: Always begin excavation downhill of the probe strike. This preserves the victim's air pocket and allows for easier extraction.



Check out our ABC's and D of Digging video at: backcountryaccess.com/education

STEALTH QUICK-LOCK PROBES — *Every second counts*

Stealth Quick-Lock probes guarantee the easiest and fastest assembly on the market, while freeing up additional storage space in your pack. Say goodbye to flogging cables and deployment hang-ups. The Stealth probes can save valuable seconds when time matters.

★ PROBE TIP: Always probe perpendicular to the slope angle in concentric circles from the lowest distance reading on your beacon.



8 PHOTO :: RYAN KOU PAL





new STEALTH 240

Compact, lightweight and economical. Laser-etched depth markings for snowpack evaluation and measurement.

WEIGHT :: 9 ounces / 255 grams
EXTENDED LENGTH :: 7' 11" / 240 cm
COLLAPSED LENGTH :: 18" / 45.75 cm
DIAMETER :: .43" / 1.1 cm



new STEALTH 300

Our burliest probe for professionals and those traveling in deep snowpacks. Laser-etched depth markings for added durability.

WEIGHT :: 12 ounces / 340 grams
EXTENDED LENGTH :: 9' 8" / 300 cm
COLLAPSED LENGTH :: 19" / 48 cm
DIAMETER :: .49" / 1.24 cm



new STEALTH 270

BCA's mainstream probe for the advanced recreationalist; perfect for most snowpacks. Laser-etched depth markings for added durability.

WEIGHT :: 10.5 ounces / 298 grams
EXTENDED LENGTH :: 8' 10" / 270 cm
COLLAPSED LENGTH :: 18.5" / 47 cm
DIAMETER :: .49" / 1.24 cm



new STEALTH 260 CARBON

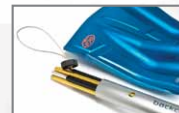
Our lightest probe for the weight-conscious crowd.

WEIGHT :: 7.5 ounces / 213 grams
EXTENDED LENGTH :: 8' 6" / 260 cm
COLLAPSED LENGTH :: 16.5" / 42 cm
DIAMETER :: .403" / 1 cm

All probes come in a redesigned carry bag.



B-1 probe fits inside the B-1 shovel shaft.



STASH PACKS — *It's all Stash country.*

Slackcountry, Sidecountry, Backcountry. It's all Stash country. The Stash line features a pack for any winter objective that you can dream of. Built around durability and function, all members of the Stash line feature optimal helmet and ski/snowboard carrying options. Hydration system can be placed in the Stash hydration sleeve to prevent freezing.



red



green/yellow

new STASH BC™

Big or small, the BC does it all. Our most versatile pack for all-day charging.

VOLUME :: 2,135 cubic inches / 35 liters

WEIGHT :: 3.4 pounds / 1,530 grams

TORSO LENGTHS :: 17-22"

HIGHLIGHTS :: stowable helmet carry system, vertical snowboard carry system, A-frame and diagonal ski carry system.

COLOR :: available in black, green/yellow, and red

*Hydration reservoir is not included.





green/yellow



new STASH OB™

Low profile and lightweight for lift served and out-of-bounds hot laps.

VOLUME :: 976 cubic inches / 16 liters

WEIGHT :: 2.2 pounds / 992 grams

TORSO LENGTHS :: 15-22"

HIGHLIGHTS :: thin profile, low volume, vertical snowboard carry and diagonal ski carry system.

COLOR :: available in black and green/yellow

*Hydration reservoir is not included.



new STASH ALP 40™

Pro/guiding/peak-bagging pack.

VOLUME :: 2,440 cubic inches / 40 liters

WEIGHT :: 3.4 pounds / 1,559 grams

TORSO LENGTHS :: 17-22"

HIGHLIGHTS :: extendable/removable top lid and roll top, helmet carry, side access, vertical snowboard carry, diagonal and A-frame ski carrying system.

COLOR :: available in red only

*Hydration reservoir is not included.

MAGIC CARPET SKINS

Designed to accommodate the widest and most rockered skis, the glide on these skins will make you feel like you're riding up the skin track on a magic carpet. Includes water repellent Nylon plush and glue formulated for cold North American temperatures. Our tip and tail hardware is compatible with most ski designs, including rounded twin-tip designs. The included trim kit gives you the tools you need to cut your skins to fit any sidecuts.

AVAILABLE WIDTHS :: 100 mm, 110 mm, 120 mm, 130 mm, 140 mm, 150 mm

ALPINE TREKKER

The Trekkers are a must-have for those looking to break into the touring scene as well as hard-charging skiers wanting the performance and reliability of a full alpine binding on burly descents. Fits into standard alpine bindings for the ascent. Remove prior to skiing downhill.

WEIGHT :: 2.7 pounds / 1228 grams

SIZING :: 240-355 mm (one size fits all)

CLIMBING BAR HEIGHT :: 1.25 inches / 3.2 cm
or 1.75 inches / 4.5 cm

TREKKER CRAMPON

Available as an accessory. Readily attaches to bottom of Trekker toe piece to prevent a slide for life on hard snow.

AVAILABLE SIZE :: 90 mm



EDUCATION AND SNOW STUDY TOOLS — *Elevate your game*

Our snow study tools allow you to gather all of the data you need, without breaking the bank. At Backcountry Access we want our users to be prepared, knowledgeable and informed.



BCA SNOW STUDY KIT

Durable fabric carry case includes all items below, each are also sold separately.

CALIBRATABLE DIGITAL THERMOMETER

TEMPERATURE RANGE :: -50°C to 200°C (-58°F to 392°F)

SLOPE METER

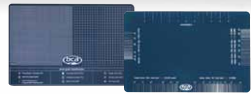
ANGLE RANGE :: 0° - 60°
Can be read from the side and above.
Doubles as scraper.

MAGNIFYING LOUPE

Uses a folding metal base with glass lens.

ALUMINUM CRYSTAL CARD

DIMENSIONS :: 6 x 4" / 15 x 10 cm
Includes snow grain classifications, slope angle map tool, and 1 mm and 3 mm grids to help you in your snowpack evaluations.



LEXAN CRYSTAL CARD

DIMENSIONS :: 6 x 4" / 15 x 10 cm

Has all the same graphics as the aluminum card printed on 2 mm thick Lexan. Ideal for sunny climates.



FIELD BOOK

Developed by the American Institute for Avalanche Research and Education (AIARE), and compliant with the American Avalanche Association (AAA) SWAG standards.



35 CM SNOW SAW

Cuts both snow and wood. Ideal length for isolating snow columns for stability tests.



2 M RULER



EDUCATIONAL DVD'S

THE FINE LINE FROM ROCKY MOUNTAIN SHERPAS

The greatest snow sports athletes join North America's leading avalanche professionals to bring you a new movement in avalanche education. Includes a rowdy feature film (57 minutes) and four training films about understanding avalanche bulletins, choosing terrain, predicting avalanches, and emergency self rescue.



TAKE CHARGE: LEADING A COMPANION RESCUE FROM BCA AND TETON GRAVITY RESEARCH

Learn how to organize and execute a fast avalanche rescue. Take Charge is an instructional video that demonstrates how to perform a step-by-step avalanche rescue. Focuses on beacon, probe, shovel, and leadership skills (18 minutes).



BEACON TRAINING PARK

These training devices are located worldwide! Users can practice searching in different scenarios without having to bury or dig up transmitters. The training parks have up to eight transmitters that can be turned on and off depending on the desired complexity. 2012/13 models will be wireless for easy installation and portability. Available with four or eight transmitters.



BEACON CHECKER

This compact, weatherproof box is mounted at resort access gates, patrol and alpine huts, mechanized operations and other areas where transceivers are used. Using Tracker technology, the checker shows a green "O" when a transmitting signal is present and red "X" when no signal is detected.



Follow us on our website, Facebook, and Twitter for updates on BCA products, snow safety techniques and epic stories. Stay ahead of the curve by learning from our library of videos on the BCA YouTube channel: www.youtube.com/BackcountryAccess.



Locations of our beacon training parks can be found online at: www.backcountryaccess.com/trainingparks



Backcountry Access, Inc.
2820 Wilderness Place, Unit H
Boulder, Colorado 80301 USA
800.670.8735

info@backcountryaccess.com
www.backcountryaccess.com