

# INSTALLATION INSTRUCTIONS

## HIGH & LOW GAS PRESSURE SWITCH INSTALLATION KIT XVERS (POWERED BY KOR) BOILERS (SIZES: 1007 THROUGH 4007)

**⚠ WARNING** These instructions are for use by qualified personnel specifically trained and experienced in the installation of this type of heating equipment and related system components. Installation and service personnel may be required to be licensed in some states. Persons not qualified shall not attempt to install this equipment nor attempt repairs according to these instructions.

**⚠ WARNING** Make sure water, gas, and power have been turned OFF before making any repairs or servicing this equipment. Make sure the heat exchanger is not under any pressure before attempting to service this part. Allow the appliance to cool before attempting this installation.

**⚠ DANGER** **SHOCK HAZARD:** Make sure the electrical power to the unit is disconnected to avoid damage to components, potential serious personal injury or death.

**SCOPE:** The details of this document provide information for installing high and low gas pressure switches on Raypak XVers (powered by KOR) boilers (sizes: 1007 through 4007).

### RAYPAK INCLUDED PARTS:

Kit Number	Description	Qty.
100-10008646	Low-Pressure Gas Switch	1
	Wire Harness Assembly	1

Kit Number	Description	Qty.
100-10008647	High-Pressure Gas Switch	1
	Wire Harness Assembly	1

### TOOLS REQUIRED:

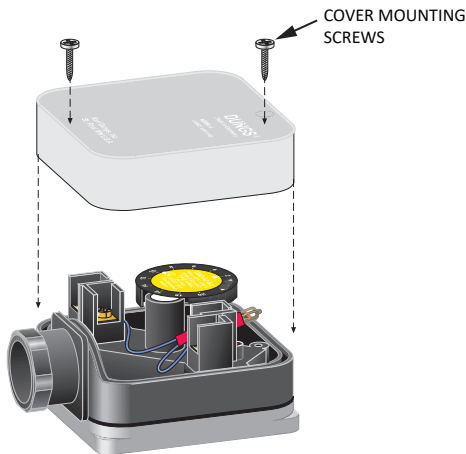
Description
• Phillips Head Screwdriver

## PREPARATION

1. Turn off the electrical power to the unit at the breaker panel and at the unit's power switch.
2. Turn off gas to the unit's manual shut-off valve.
3. Close the incoming water valves.
4. Release the four (4) snap fasteners to remove the unit's front panel. Next, vertically remove the right-side panels from the unit. Place all panels aside for re-assembly.

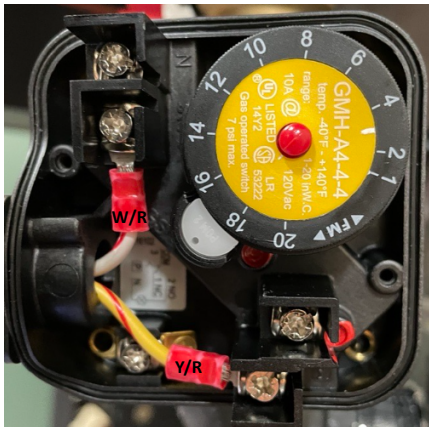
## PRE-WIRING THE PRESSURE SWITCHES

1. In preparation for pressure switch installation, detach the gas pressure switch cover by removing the two (2) screws holding it in place. See **Figure 1**.

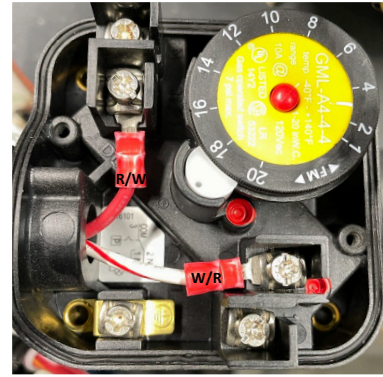


**Figure 1. Pressure Switch Cover Removal**

2. Route the supplied kit wire harness through each high and low gas pressure switch conduit connector. Connect each wire to its corresponding pressure switch terminal as shown in **Figure 2** and **Figure 3**.



**Figure 2. High-Pressure Switch Wiring (W/R - Y/W)**

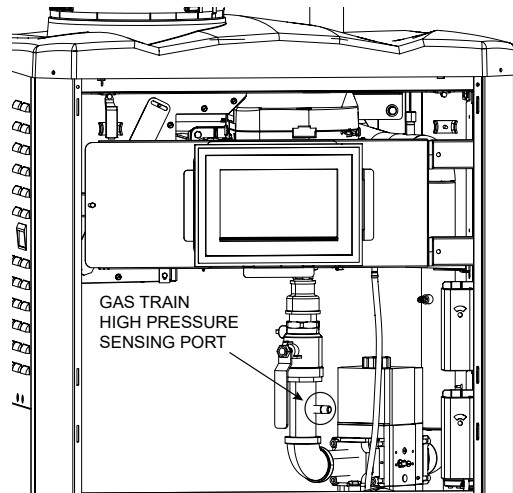


**Figure 3. Low-Pressure Switch Wiring (R/W - W/R)**

3. Reattach and secure the pressure switch cover.

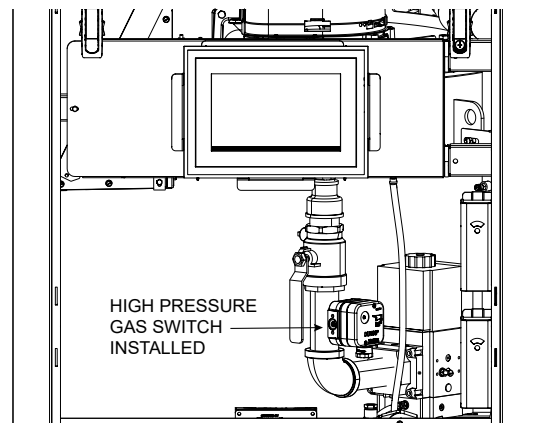
## PRESSURE SWITCH INSTALLATION

1. Locate the high-pressure sensing port on the gas train. See **Figure 4**.



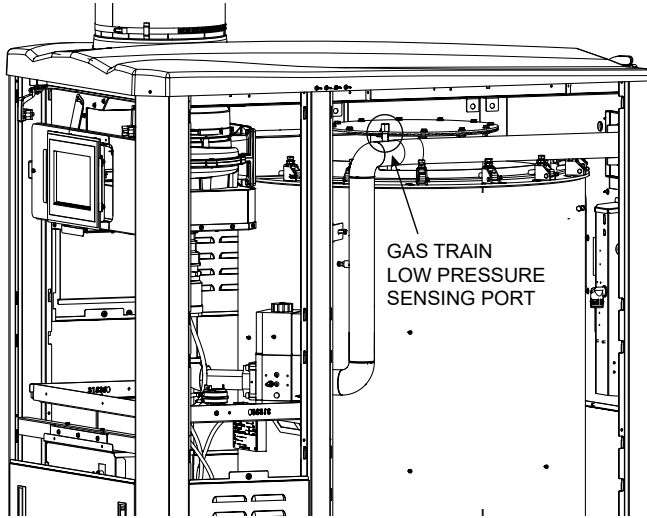
**Figure 4. High-Pressure Port Location**

2. Remove the pressure sensing cap. Apply approved gas-rated thread sealant and thread the high-gas-pressure switch onto the pressure sensing port. See **Figure 5**.



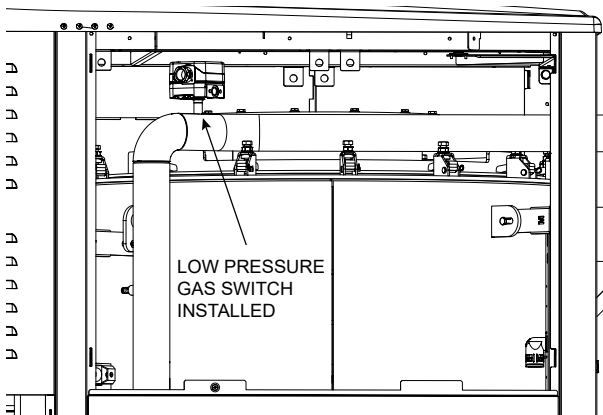
**Figure 5. High-Pressure Gas Switch Installed**

3. Locate the low-pressure sensing port on the unit's gas train. See **Figure 6**.



**Figure 6. Low-Pressure Port Location**

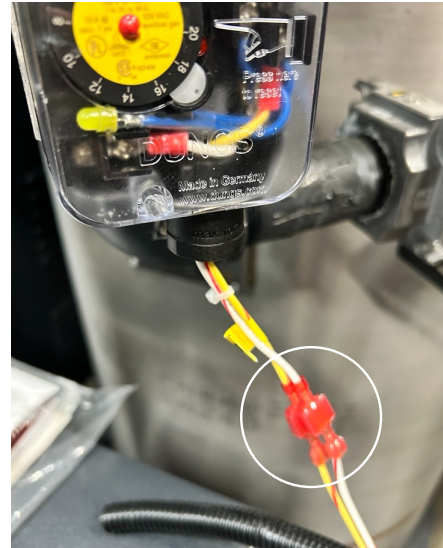
4. Remove the pressure sensing cap. Apply approved gas-rated thread sealant and thread the low gas pressure switch onto the pressure sensing port. See **Figure 7**.



**Figure 7. Low-Pressure Gas Switch Installed**

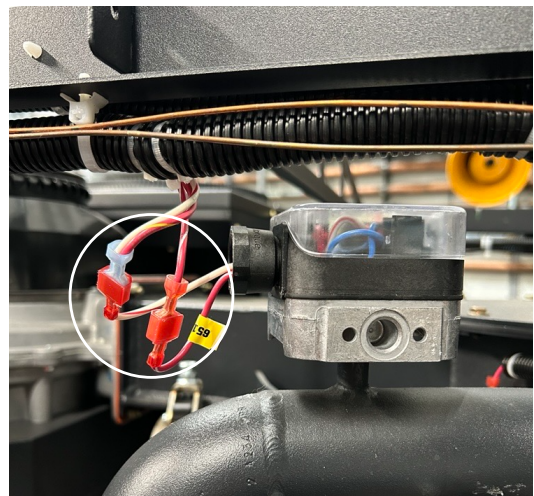
## CONNECT SWITCHES TO WIRE HARNESS

1. Locate the unit wiring loom along the inner frame that contains the R/W and Y/R pressure switch wires. Connect the high-pressure switch terminals to the corresponding wires in the unit harness. See **Figure 8**.



**Figure 8. High-Pressure Gas Switch Wiring**

2. Locate the unit wiring loom along the inner frame that contains the R/W and W/R pressure switch wires. Connect the low-pressure switch terminals to the corresponding wires in the unit harness. See **Figure 9**.



**Figure 9. Low-Pressure Gas Switch Wiring**

## COMPLETION

1. Reinstall the unit's panels, then follow step 3 through step 1 in reverse order to restore the unit to operational status.