



Product Submittal for XPAK-FT®

Wall-Hung Condensing Boiler

Models 88AR, 108AR, 198AR, 278AR & 398A

Date: _____ Job: _____ Location: _____

Equipment Tags: _____ Engineer: _____ Contractor: _____

Model: _____ Notes: _____

Prepared by: _____ Indoor ☐ Outdoor ☐ Gas Type: Natural Gas ☐ Propane ☐

Versa IC® controller with LCD display

Soft Start, electronic modulation, up to 10:1 turndown

LCD status display with full diagnostics and fault memory

3-in-1 Vent adapter (PVC/CPVC - Duravent® polypro - SS)

Meets 2012 NOx requirements (< 14 ng/J (< 55 PPM NOx))

Minimum inlet water temp 50°F (10°C)

Maximum outlet water temperature: 195°F (90.6°C)

Maximum system temperature: 190°F (87.8°C)

Limited 20-year thermal shock warranty

Limited 10-year closed-loop heat exchanger warranty

Modbus RTU RS485 port

Wall-mounted design

Proudly assembled in the USA



*Configured for PVC vent standard. Maximum inlet temperature of 170°F (76.7°C) for PVC vent.

Features and Options

Heat Exchanger

Headers

- All stainless steel construction
- Gasketless heat exchanger design
- ASME H stamped; 80 PSIG MAWP
- National board registered
- ASME Pressure relief valve 30 PSIG
- T&P Gauge (shipped loose)

Power

- 120V, 60Hz, 1Ø Power supply

Control

- VERSA IC® LCD display
- Outdoor reset with indirect priority
- 0-10 VDC input for BMS
- Cascade up to 8 boilers
- Direct Spark Ignition (DSI)
- Remote flame sensor
- High limit, manual reset, fixed, 200°F (93.3°C)
- Alarm dry contact connection
- On/off power switch
- Blocked vent pressure switch
- Boiler, DHW & system pump contacts
- Water temperature sensors (4) 10kΩ (2 shipped loose)
- Outdoor air sensor (1) 10kΩ (shipped loose)
- Modbus RTU BMS Port (Up to 115K Baud,
 - ☐ B-85 – BMS Gateway – BACnet MS/TP, BACnet IP, N2 Metasys or Modbus TCP
 - ☐ B-86 – BMS Gateway – LonWorks

Burner

- Ultra-Low NOx: less than 14 ng/J (<20 ppm)

Gas Train

- Fuel
 - ☐ Natural gas
 - ☐ Propane (minimum grade HD-5)
- Dual-seat combination valve
- Electronic modulating firing mode (H7)

Construction

- Indoor construction only
- Front controls enclosed
- PolyTuf powder coat finish
- Bottom connections (gas,water)

- Top connections (combustion air, vent, PRV)
- Design Certified ANSI Z21.13/ CSA 4.9
- Condensate trap
- Elevation
 - ☐ 0-2,000 feet
 - ☐ 5,000-9,999 feet

Venting (all shipped separately)

- ☐ D-11 - Outdoor SS vent termination
- ☐ D-91 Polypro elbow termination
 - ☐ Duravent 2" (model 88A only)
 - ☐ Duravent 3" (models 88A to 398A)
 - ☐ Duravent 4" (model 398A only)
 - ☐ Centrotherm 2" (model 88A only)
 - ☐ Centrotherm 3" (models 88A to 398A)
 - ☐ Centrotherm 4" (model 398A only)
- ☐ D-92 - Polypro reducer (88AR & 398A only)
 - ☐ Duravent 3" to 2" (model 88A only)
 - ☐ Duravent 4" to 3" (model 398A only)
 - ☐ Centrotherm 3" to 2" (model 88A only)
 - ☐ Centrotherm 4" to 3" (model 398A only)
- ☐ D-94 - Horizontal twin pipe polypro
 - ☐ Duravent 2" (model 88A only)
 - ☐ Duravent 3" (models 88A to 398A)
 - ☐ Duravent 4" (model 398A only)
 - ☐ Centrotherm 2" (model 88A only)
 - ☐ Centrotherm 3" (models 88A to 398A)
 - ☐ Centrotherm 4" (model 398A only)
- ☐ D-95 - Horizontal concentric termination, polypro
 - ☐ Duravent 2" (model 88A only)
 - ☐ Duravent 3" (models 88A to 398A)
 - ☐ Duravent 4" (model 398A only)
 - ☐ Centrotherm 2" (model 88A only)
 - ☐ Centrotherm 3" (models 88A to 398A)
 - ☐ Centrotherm 4" (model 398A only)
- ☐ D-96 - Vertical concentric termination, polypro
 - ☐ Duravent 2" (model 88A only)
 - ☐ Duravent 3" (models 88A to 398A)
 - ☐ Duravent 4" (model 398A only)
 - ☐ Centrotherm 2" (model 88A only)
 - ☐ Centrotherm 3" (models 88A to 398A)
 - ☐ Centrotherm 4" (model 398A only)
- ☐ D-103 SS vertical/horizontal termination
 - ☐ Duravent 3" (models 88A to 398A)
 - ☐ Duravent 4" (model 398A only)

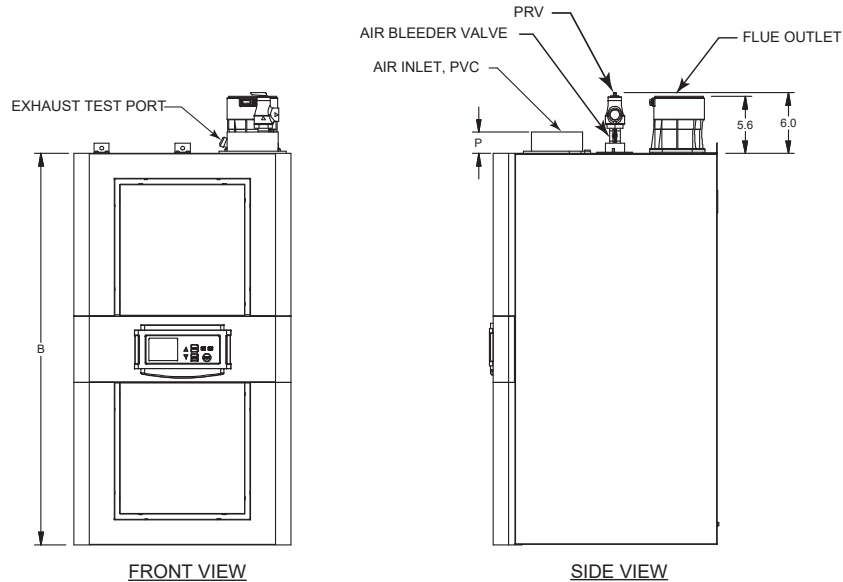
- ☐ D-104 Bird guard
 - ☐ Duravent 2" (model 88A only)
 - ☐ Duravent 3" (models 88A to 398A)
 - ☐ Duravent 4" (model 398A only)
 - ☐ Centrotherm 2" (model 88A only)
 - ☐ Centrotherm 3" (models 88A to 398A)
 - ☐ Centrotherm 4" (model 398A only)
- ☐ D-105 Locking band
 - ☐ Duravent 2" (model 88A only)
 - ☐ Duravent 3" (models 88A to 398A)
 - ☐ Duravent 4" (model 398A only)
 - ☐ Centrotherm 2" (model 88A only)
 - ☐ Centrotherm 3" (models 88A to 398A)
 - ☐ Centrotherm 4" (model 398A only)
- ☐ D-107 Appliance adapter
 - ☐ Centrotherm 2" (model 88A only)
 - ☐ Centrotherm 3" (models 88A to 398A)
 - ☐ Centrotherm 4" (model 398A only)

Options

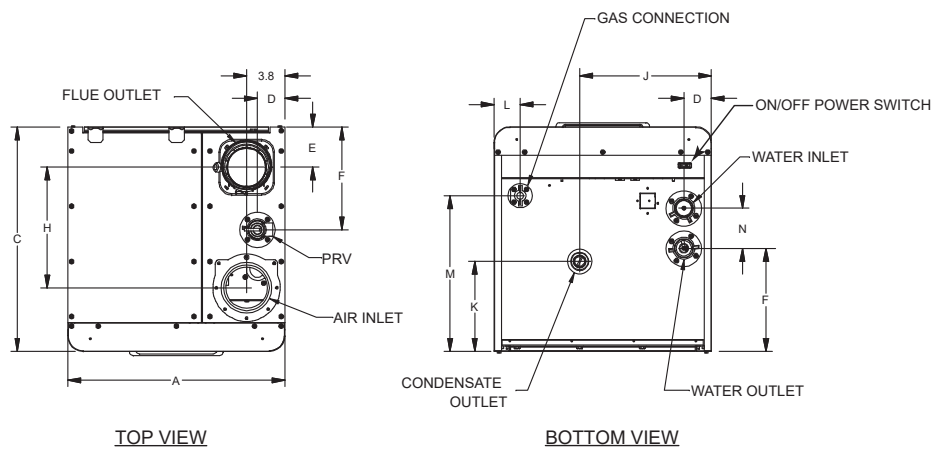
- ☐ B-36 2-4 Heaters
- ☐ B-37 5-10 Heaters
- ☐ B-38 11-16 Heaters
- ☐ B-39* EMS 4-20mA remote setpoint interface module
- ☐ B-62* BACnet MS/TP interface
(*Must be used with B-36 to B-38)
- ☐ E-5 Boiler alarm with buzzer
- ☐ F-1 Flow Switch – (Loose)
- ☐ F-10 Low water cut-off, manual reset
(standard on model 398A)
- ☐ L-1 Propane gas conversion
(models 198A-398A only)
- ☐ L-2 Natural gas conversion
(models 198A-398A only)
- ☐ P_____ Pump: _____ HP, 120V, 1Ø, 60Hz
 - ☐ Cast iron
 - ☐ Stainless steel
- ☐ S-1/S-2 High and low gas pressure switches
manual reset
- ☐ Z-12 Condensate treatment kit

Additional options or accessories

☐ _____



For mounting data,
see the manual.



Dimensions in (mm)																	
Model	A	B	C	D	E	F	H	J	K	L	M	N	P	Vent	Air Inlet	Water Conn. (NPT)	Gas Conn. (NPT)
<input type="checkbox"/> 88AR	16.4 (417)	35.8 (909)	16.5 (419)	2.1 (53)	2.7 (69)	6.3 (160)	7.8 (198)	9.5 (241)	5.5 (140)	1.5 (38)	4.6 (117)	2.8 (71)	2.3 (58)	2 (51)/ 3 (102) (1)	2 (51)/ 3 (102) (1)	1 (25)	1/2 (13)
<input type="checkbox"/> 108AR	16.4 (417)	35.8 (909)	16.5 (419)	2.1 (53)	2.7 (69)	6.3 (160)	7.8 (198)	9.5 (241)	5.5 (140)	1.5 (38)	4.6 (117)	2.8 (71)	2.3 (58)	3 (76)	3 (76)	1 (25)	1/2 (13)
<input type="checkbox"/> 198AR	18.6 (472)	36.2 (919)	19.4 (493)	2 (51)	3.1 (79)	8.2 (208)	10 (254)	11.3 (287)	7.1 (180)	1.7 (43)	11.5 (76.7)	3.6 (91)	2.3 (58)	3 (76)	3 (76)	1-1/4 (32)	3/4 (19)
<input type="checkbox"/> 278AR	18.6 (472)	36.2 (919)	19.4 (493)	2 (51)	3.1 (79)	8.2 (208)	10 (254)	11.3 (287)	7.1 (180)	1.7 (43)	11.5 (76.7)	3.6 (91)	2.3 (58)	3 (76)	3 (76)	1-1/4 (32)	3/4 (19)
<input type="checkbox"/> 398A	21.4 (544)	38.6 (980)	22.1 (561)	2.7 (69)	4 (102)	10.1 (257)	12 (305)	13 (330)	8.9 (226)	2.6 (66)	15.3 (389)	4 (102)	2.1 (53)	3 (76)/ 4 (102) (2)	3 (76)/ 4 (102) (2)	1-1/2 (38)	3/4 (19)

1. Model 88AR collar is 3" standard but can be reduced to 2" with shorter run. See the manual.
2. Model 398A collar is 4" standard but can be reduced to 3" with shorter run. See the manual.



Product Submittal for XPAK-FT®

Wall-Hung Condensing Boiler

Job: _____

Model	Input MBH (kW)			Minimum Operating Input (MBH)	Amps	Operating Weight
	Min	Max	AFUE Rating %			
<input type="checkbox"/> 88AR	17 (5)	85 (25)	95	12 (4)	5	126 (57.1)
<input type="checkbox"/> 108AR	22 (6)	110 (32)	95	13 (4)		128 (58)
<input type="checkbox"/> 198AR	39.8 (12)	199 (58)	95	28.4 (8)		187 (84.8)
<input type="checkbox"/> 278AR	55 (16)	275 (81)	95	36.6 (11)		186 (84.4)
<input type="checkbox"/> 398A	39.9 (12)	399 (117)	96	39.9 (12)		262 (118.8)

RATES OF FLOW AND PRESSURE DROPS												
Model	30°F ΔT		40°F ΔT		50°F ΔT		Minimum Flow			Maximum Flow		
	GPM (L/min)	ΔP ft (m)	GPM (L/min)	ΔP ft (m)	GPM (L/min)	ΔP ft (m)	GPM (L/min)	ΔP ft (m)	ΔT °F (°C)	GPM (L/min)	ΔP ft (m)	ΔT °F (°C)
<input type="checkbox"/> H7-88AR	5.4 (20)	3.3 (1)	4 (15)	2.3 (0.7)	3.2 (12)	1.8 (0.5)	2.7 (10)	1.4 (0.4)	60 (33)	8.1 (31)	1.4 (0.4)	20 (11)
<input type="checkbox"/> H7-108AR	7.0 (27)	4.5 (1.4)	5.2 (20)	3.2 (1)	4.2 (16)	2.4 (0.7)	3.5 (13)	2 (0.6)	60 (33)	10.5 (40)	3 (0.6)	20 (11)
<input type="checkbox"/> H7-198AR	12.6 (48)	6.2 (1.9)	9.5 (36)	4.3 (1.3)	7.6 (29)	3.5 (1.1)	6.3 (24)	3 (0.9)	60 (33)	18.9 (72)	4 (0.9)	20 (11)
<input type="checkbox"/> H7-278AR	17.4 (66)	10.1 (3.1)	13.1 (50)	6.5 (2)	10.5 (40)	4.9 (1.5)	8.7 (33)	4 (1.2)	60 (33)	26.1 (99)	5 (1.2)	20 (11)
<input type="checkbox"/> H7-398A	25.5 (97)	7.4 (2.3)	19.2 (73)	5 (1.5)	15.3 (58)	4 (1.2)	12.8 (49)	3.4 (1)	60 (33)	38.3 (145)	3.4 (1)	20 (11)

Model No.	Standard Boiler Pump *	
	Pump	HP
<input type="checkbox"/> H7-88AR	Taco 007	1/25
<input type="checkbox"/> H7-108AR	Taco 007	1/25
<input type="checkbox"/> H7-198AR	Taco 0010	1/8
<input type="checkbox"/> H7-278AR	Taco 0012	1/8
<input type="checkbox"/> H7-398A	Taco 0012	1/8

*Pump selection based on 30°F ΔT with up to 50 eq. ft. of tubing