



# CARRINGTON STREET



£925,000

**WETHERELL**  
MAYFAIR'S FINEST PROPERTIES

102 Mount Street · London · W1K 2TH  
T: 020 7529 5566 E: [sales@wetherell.co.uk](mailto:sales@wetherell.co.uk)  
[wetherell.co.uk](http://wetherell.co.uk)

NO-ONE KNOWS MAYFAIR BETTER THAN WETHERELL





## CARRINGTON STREET



A newly refurbished one bedroom apartment in a purpose built block with resident caretaker.

FLAT • 1 BEDROOM • 1 RECEPTION ROOM

NO-ONE KNOWS MAYFAIR BETTER THAN WETHERELL





## CARRINGTON STREET

A newly refurbished one bedroom apartment in a purpose built block with resident caretaker.

Located in the heart of Shepherd Market, Mayfair, this lateral apartment of 418sq ft is situated on the second floor with high ceilings and period features. There is a large reception room with west facing aspect, separate kitchen, double bedroom and en suite bathroom. The property will serve very well as a pied a terre or investment property. Located on Carrington Street in Shepherd Market, Garrick House is well placed for many restaurants, bars and private members clubs, including the prestigious 5 Hertford Street. Excellent transport links are close by including Green Park tube station for access to the Jubilee, Victoria and Piccadilly tube lines.

### Accommodation:

- \*One Bedroom
- \*En Suite Bathroom
- \*Kitchen
- \*Reception Room
- \*Second Floor
- \*Resident Caretaker

### Terms:

Lease Length: 137 Years Remaining  
Service Charge: £2,264 Per Annum  
Ground Rent: TBC

Price: £925,000

£925,000

Wetherell have no authority to make or give any representations or warranties in relation to the property. These particulars do not form part of any offer or contract and must not be relied upon as statements or representations of fact. Any areas, measurements or distances are approximate. The text, photographs and plans are for guidance only and are not necessarily comprehensive. It should not be assumed that the property has all the necessary planning, building regulation or other consents and Wetherell have not tested any services, equipment or facilities. Purchasers must satisfy themselves by inspection or otherwise. 2021

**WETHERELL**  
MAYFAIR'S FINEST PROPERTIES

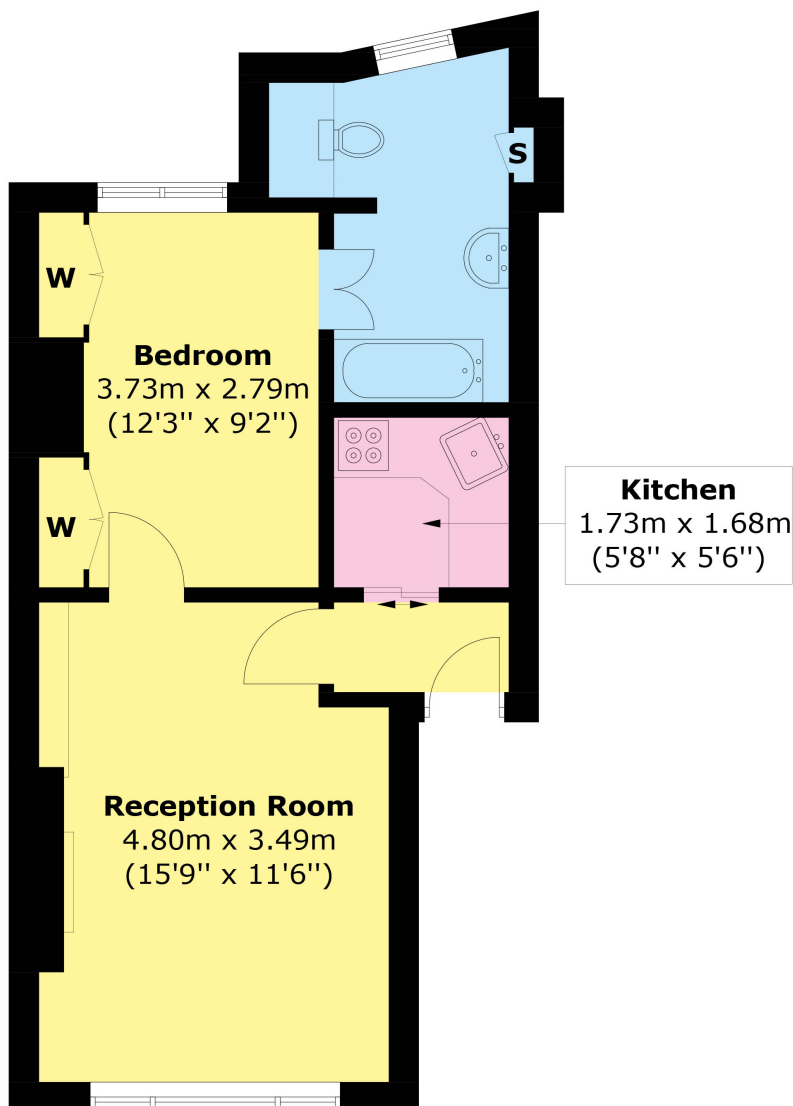
102 Mount Street · London · W1K 2TH  
T: 020 7529 5566 E: sales@wetherell.co.uk  
wetherell.co.uk

NO-ONE KNOWS MAYFAIR BETTER THAN WETHERELL





CARRINGTON STREET



## Second Floor

Area (approx.): 38.9 sq. m (418.6 sq. ft)

Wetherell have no authority to make or give any representations or warranties in relation to the property. These particulars do not form part of any offer or contract and must not be relied upon as statements or representations of fact. Any areas, measurements or distances are approximate. The text, photographs and plans are for guidance only and are not necessarily comprehensive. It should not be assumed that the property has all the necessary planning, building regulation or other consents and Wetherell have not tested any services, equipment or facilities. Purchasers must satisfy themselves by inspection or otherwise. 2021

## WETHERELL

MAYFAIR'S FINEST PROPERTIES

102 Mount Street · London · W1K 2TH  
T: 020 7529 5566 E: sales@wetherell.co.uk  
wetherell.co.uk

NO-ONE KNOWS MAYFAIR BETTER THAN WETHERELL

