



# AVERY ROW

## MAYFAIR



A smart and modern one bedroom apartment with south west facing views located within the fashionable Avery Row.

£999,950

**WETHERELL**  
MAYFAIR'S FINEST PROPERTIES

102 Mount Street · London · W1K 2TH  
T: 020 7529 5566 E: [sales@wetherell.co.uk](mailto:sales@wetherell.co.uk)  
[wetherell.co.uk](http://wetherell.co.uk)



NO-ONE KNOWS MAYFAIR BETTER THAN WETHERELL

1982-2012





## AVERY ROW MAYFAIR



FLAT • 1 BEDROOM • 1 RECEPTION ROOM

NO-ONE KNOWS MAYFAIR BETTER THAN WETHERELL





## AVERY ROW MAYFAIR

A smart and modern one bedroom apartment with south west facing views located within the fashionable Avery Row.

Situated on the first floor, this bright property of 524 sq ft comprises a large open plan kitchen/reception room, generous double bedroom with a separate bathroom and is sold with a long lease.

Avery Row is set back off prestigious Grosvenor Street and is moments from Selfridges and the open spaces of Grosvenor Square.

- \*Entrance Hall
- \*Reception Room
- \*Kitchen
- \*Double Bedroom
- \*Bathroom
- \*524 sq ft
- \*EPC Band - C

Leasehold - 108 years remaining  
Service Charge - Approximately £1,563 per annum  
Ground Rent -TBC  
Price - £999,950

£999,950

Wetherell have no authority to make or give any representations or warranties in relation to the property. These particulars do not form part of any offer or contract and must not be relied upon as statements or representations of fact. Any areas, measurements or distances are approximate. The text, photographs and plans are for guidance only and are not necessarily comprehensive. It should not be assumed that the property has all the necessary planning, building regulation or other consents and Wetherell have not tested any services, equipment or facilities. Purchasers must satisfy themselves by inspection or otherwise. 2014

**WETHERELL**  
MAYFAIR'S FINEST PROPERTIES

102 Mount Street · London · W1K 2TH  
T: 020 7529 5566 E: sales@wetherell.co.uk  
wetherell.co.uk



1982-2012

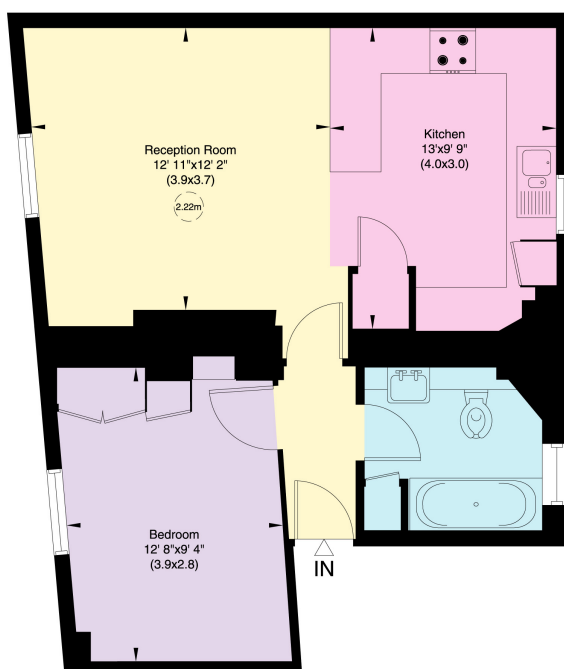
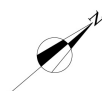
NO-ONE KNOWS MAYFAIR BETTER THAN WETHERELL



## AVERY ROW MAYFAIR

### AVERY ROW LONDON W1K

Gross internal area (approx.)  
49 Sq m (524 Sq ft)



First Floor

Not to scale, for guidance only and must not be relied upon as a statement of fact. All measurements and areas are approximate only (and have been prepared in accordance with the current edition of the RICS Code of Measuring Practice).

Wetherell have no authority to make or give any representations or warranties in relation to the property. These particulars do not form part of any offer or contract and must not be relied upon as statements or representations of fact. Any areas, measurements or distances are approximate. The text, photographs and plans are for guidance only and are not necessarily comprehensive. It should not be assumed that the property has all the necessary planning, building regulation or other consents and Wetherell have not tested any services, equipment or facilities. Purchasers must satisfy themselves by inspection or otherwise. 2014

## WETHERELL

MAYFAIR'S FINEST PROPERTIES

102 Mount Street · London · W1K 2TH  
T: 020 7529 5566 E: sales@wetherell.co.uk  
wetherell.co.uk



1982-2012

NO-ONE KNOWS MAYFAIR BETTER THAN WETHERELL