



Hydraulics Ltd
Antech

Pumps | Motors | Filtration | Cylinders | Power Units

SPECIALISTS IN SYSTEM DESIGN & **HYDRAULIC COMPONENTS**

About Antech Hydraulics



At Antech Hydraulics, we are a proudly independent, privately owned company, offering a level of flexibility and personal service that sets us apart. Since our founding in 1995, we've built a reputation for technical expertise, responsive support, and tailored solutions.

We specialise in the supply, design, and servicing of hydraulic components and systems, supporting a wide range of industries—from mobile and industrial applications to oil & gas, marine, mining, and wind energy sectors.

Whether you need solutions for movement, lifting, rotation, shaping, excavation, or transportation, we are your trusted hydraulic partner. Our in-depth understanding of modern technologies enables us to deliver the performance and reliability you need to stay ahead in a rapidly evolving market.

Our product offering includes:

- Hydraulic pumps, motors, valves, filtration, and cylinders
- Complete hydraulic systems
- Repair and servicing solutions

With a focus on fast response, technical accuracy, and customer satisfaction, we help you achieve your goals quickly and efficiently.



Engineering Services



Antech offers an ever-expanding suite of hydraulic engineering services, designed to meet the diverse needs of our customers across various industries. Our experienced team are committed to delivering high-quality solutions that enhance the efficiency and reliability of your hydraulic systems.

Our comprehensive range of products & services include:



Filtration & Breathers

UFI Filters and **NTF Microfiltration** are global leaders in filtration technology and thermal management. Antech are proud UK partners of the brands, stocking over 1000 Housings, Elements & Accessories, and building Offline Filtration units onsite.

Des-Case is a leading provider of contamination control products for industrial lubricants and breathers. Antech have stock on the shelf, for next day delivery.



Motors & Pumps

Working with industry leading manufacturers, Antech are proud partners of:

Kawasaki Precision Machinery (UK) Ltd
Settima Mecannica
B&C Hydraulics

We supply a complete range of Gear Pumps, Vane Pumps, Screw Pumps, Radial Motors, and Axial Piston Pumps.



Cylinders & Valves

LJM designs, develops, and manufactures hydraulic cylinders for the mobile, industrial, power generation, and food industries. Lloyds and DNV approved cylinders are available in certain ranges.

With over 30 years in the hydraulics industry, Antech also has access to industry leading valves, such as Atos, at competitive prices and available on next day delivery, subject to stock availability.

Hydraulic System Design



The team at Antech have a wealth of experience in the hydraulics industry and are equipped to handle all aspects of hydraulic system design. We pride ourselves on designing systems that are efficient, reliable, and cost-effective, using the latest technologies and techniques to ensure that the systems designed, are up to date, and meet the needs of the client.

Working with the Client from Start to Finish

Antech not only work with you from start to finish but offer after-care support if and when required.

Define and Agree the Scope of the Project

Antech will work with you and help move your project step by step to ensure you get the best outcome.

Ensure Requirements are Specific, Realistic and Measureable

Antech know how important your project is to you, and will ensure specific, realistic results.

Obtain Clarity if there is any Doubt

The last thing Antech want is for you to have doubts. They'll explain everything so you understand and happy with the result.

Create a Clear, Consise, and Thorough Specification Document

Who doesn't like to see proof? Antech know the documentation can be just as important as the product itself.

Manufacture and Install the System with Full Commissioning and Training at Site

Antech don't want to just build the product and send you on your way. They offer after-care support and can offer installation and commissioning if required. We also provide a full documentation package if required, including operating and maintenance manuals and test certificates, datasheets etc. as required.

Hydraulic System Servicing



Regular servicing is essential to keep your hydraulic systems running safely, efficiently, and reliably. An annual service helps detect wear and potential failures early, reducing downtime, avoiding costly repairs, and extending the life of your equipment. It ensures your system is operating at peak performance while meeting safety and compliance standards. With preventative maintenance, you'll benefit from consistent operation, improved energy efficiency, and lower operating costs.

Don't wait for a breakdown to take action—schedule your annual service today and keep your hydraulic system in top condition all year round.

What's Involved?

- One of Antech's engineers will schedule a date that's suitable to attend site to carry out the service.
- The quote will include: site time and travel, all replacement elements and breathers, an oil sample and sample report and clean up of the system, with an optional oil clean, if required, using a 2µm Offline Filter Trolley.
- Available on a 1, 2, or 3 year agreement where prices are held for that period of time, saving £££ each year and ensuring maximum performance of your system.

For more information on the service agreements, please contact sales@antech-hyd.co.uk and a member of the team can assist you.

Antech Hydraulics are **authorised distributors** for Kawasaki Precision Machinery (UK) Ltd, selling Staffa hydraulic motors across UK and International Markets.

With **stock on the shelves**, including seal kits and shaft seals, and **direct access to the KPM factory**, Antech are setup to support with all your Staffa requirements.

Technical Information

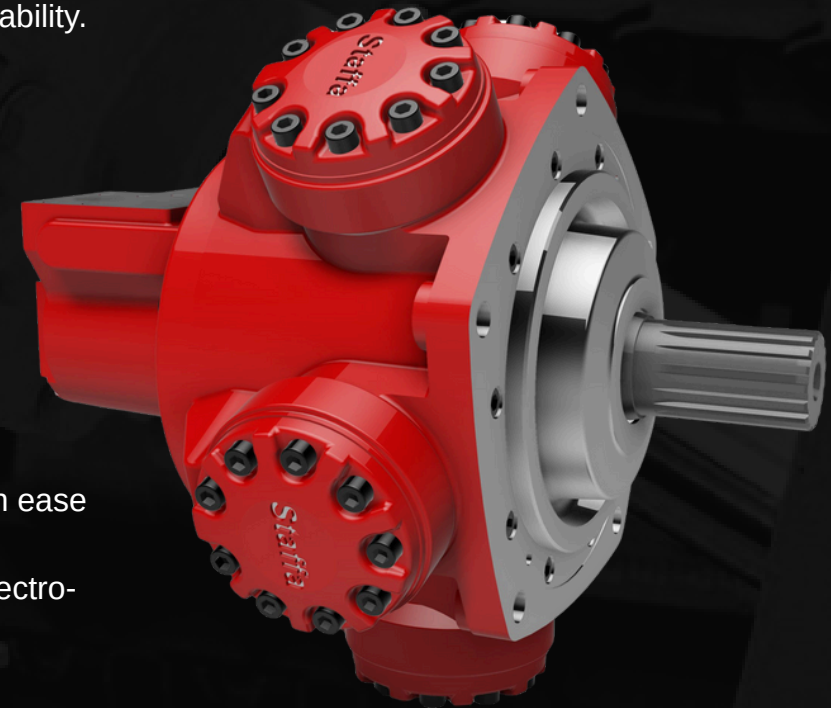
Staffa high torque, low speed radial piston motors use hydrostatic balancing techniques to achieve high efficiency, combined with good breakout torque and smooth running capability.

Various features and options are available to suit specific applications:

- Capacities from 50 to 6800 cc/rev
- Fixed, dual or quad displacement
- Up to 250 bar continuous pressure
- Output to 25000 Nm. Continuous power up to 430 kW
- Unique hydrostatic balancing provides minimum wear and extended life
- High volumetric and mechanical efficiency
- Large variety of shaft and porting options
- On dual / quad displacement motors, the pre-set displacements can be selected with ease when the motor is running (freewheel option available)
- Also available in a continuously variable version using either hydro-mechanical or electro-hydraulic control methods
- Highly accurate electronic positional and velocity control systems available

Staffa

RADIAL HYDRAULIC MOTORS



Looking for a Staffa motor? Contact sales@antech-hyd.co.uk and a member of the team can assist you. Alternatively you can call +44 (0)1253 890037 (Option 1) or scan the QR code for more information.

Antech Hydraulics are **authorised distributors** for Kawasaki Precision Machinery (UK) Ltd, selling Kawasaki axial piston pumps across UK and International Markets.

With pumps on the shelves, including seal kits, throughdrives and torque limiters, and direct access to the KPM factory, Antech are setup to support with all your pump requirements.

Technical Information

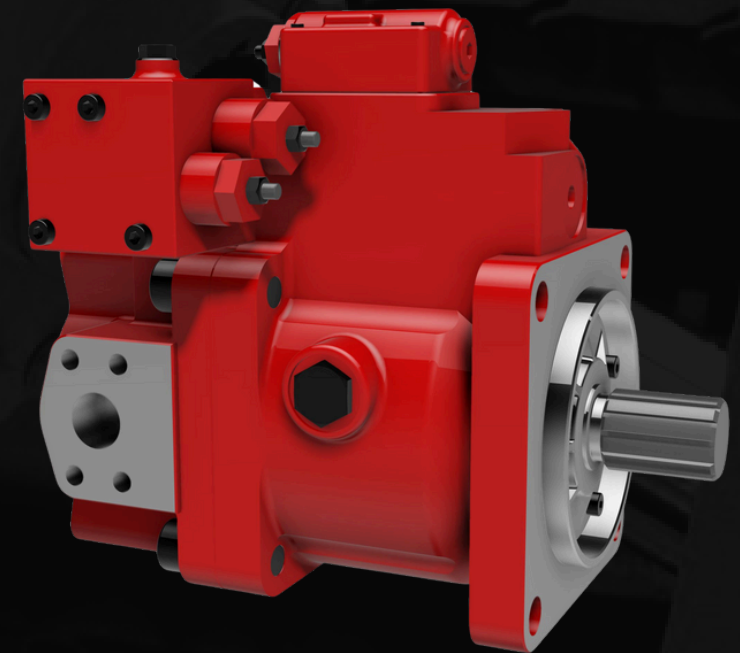
K3VL Series

- Medium/high pressure, variable displacement open circuit control with 320 bar continuous pressure rating and high self-priming capability
- Available in nominal displacements ranging from 28 to 200 cc/rev
- High efficiency, compact design with through drive capability
- Extensive range of integral control options
- Pressure limiter and remotely operated pressure compensator combination with integral unload and proportional relief remote control
- Pressure limiter and load sense combination with integral unload and proportional relief remote control
- Torque limiter control which can be integrated with any of the above
- Electrical displacement control and pilot operated displacement control (without torque limiter) also available
- Wide range of shaft, mounting and porting options

Other Kawasaki ranges include the K3VLS, K3V, K3VG and more.

 **Kawasaki**
Powering your potential

AXIAL PISTON PUMPS



Looking for a Kawasaki pump? Contact sales@antech-hyd.co.uk and a member of the team can assist you. Alternatively you can call +44 (0)1253 890037 (Option 1) or scan the QR code for more information.

Settima high flow rate pumps are available from Antech. Antech make sure to stock the best in the business when it comes to hydraulic equipment, that's why they're a trusted UK partner of Settima Meccanica high flow rate screw pumps.

In addition to their versatility, screw pumps are also incredibly reliable. They have a simple design with few moving parts, which means there are fewer components that can wear out or fail over time. This makes them a cost-effective choice for long-term use.

If you're looking for a reliable and efficient pumping solution, you might also want to consider Continuum® silent gear pumps. These pumps are a type of positive displacement pump that use inter-meshing gears to transfer fluids from one location to another.

One of the key advantages of Continuum® silent gear pumps is their quiet operation. Unlike other types of pumps that can be noisy and disruptive, these pumps operate at a low decibel level, making them ideal for use in environments where noise is a concern. Continuum® silent gear pumps are also easy to maintain, with minimal maintenance required to keep them running smoothly. And because they have no internal seals or packing, there's less risk of leakage or contamination.

Latest Innovation

The new Settima Triumphflex® screw pump is the latest technology to leave the Italian factory. With its modular design, allowing for a wide range of configurations, this universal base pump can be assembled to suit your application.

This pump is also already equipped for horizontal and vertical installation, allowing for the addition of relief valves, noise-cancelling valves, and various port orientation options.

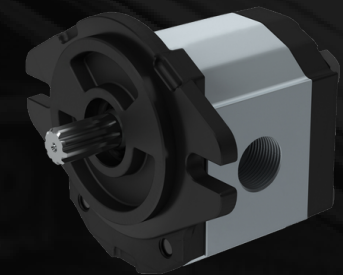
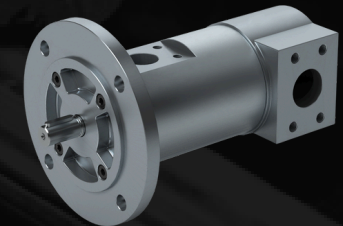


SCREW PUMPS

&

SILENT

GEAR PUMPS



Looking for a Settima pump? Contact sales@antech-hyd.co.uk and a member of the team can assist you. Alternatively you can call +44 (0)1253 890037 (Option 1) or scan the QR code for more information.

With a wide range of gear pumps on the shelf, available on next day delivery, Antech Hydraulics are the **UK distributor** of B&C Hydraulics range of gear pumps, vane pumps, and valves.

Gear Pumps & Vane Pumps are widely used in hydraulic systems. Performances are guaranteed by the high mechanical and volumetric efficiency level, as well as competitiveness in maintenance and costs.

With displacements from 0.95cc/rev up to 300cc/rev, and working pressures up to 290 Bar, these gear pump options are available in a wide choice of shafts, flanges and ports, all complying with international standards. They can also reach speeds up to 5000 rpm.

B&C hydraulic pumps are used in many different applications, including:

- Garbage Trucks
- Forklifts
- Agricultural Machinery
- Hydraulic Power Units

Did you know that B&C can provide Vane Pumps and cartridges that are fully interchangeable with Bosch Rexroth, Parker, Caterpillar and Eaton Vickers?

B&C Hydraulics also manufacture their own range of **Hydraulic Valves**:

- Check Valves
- Flow Control Valves
- Pressure Control Valves



GEAR PUMPS VANE PUMPS VALVES



Looking for a pump or valve supplier? Contact sales@antech-hyd.co.uk and a member of the team can assist you. Alternatively you can call +44 (0)1253 890037 (Option 1) or scan the QR code for more information.



Antech Hydraulics provide the full range of UFI hydraulic filtration products, including suction, pressure, return and air filters. The range extends through to standard reservoir accessories such as filler breathers, level gauges and float switches.

As a **UK partner** of UFI Hydraulic filters and a large stock holding of housings, elements, and accessories, Antech are on hand to assist you with all your filtration requirements.

Part of the UFI Group, one of the world's largest manufacturers of filtration products, UFI hydraulic filters are produced in Italy to exacting quality standards. The company is ISO9001, ISO14001, and ISO/TS 16949:2009 certified.

Suction Filters – up to 700 l/min, 10µm to 250µm filtration

Pressure Filters – up to 450 l/min, 5µm to 21µm filtration

Return Filters – up to 2400 l/min, 5µm to 90µm filtration

Cellulose, fibreglass, or metal wire mesh media is available. There is also an extensive range of visual or electrical clogging indicators to choose from.

UFI offer filter element cross-references to many other major manufacturers' products, offering you the opportunity to save money while maintaining maximum protection of your equipment.

UFI's Computer-Aided Filter selector and Element Cross Reference programs can be found on the 'Webtool' tab of the UFI website (<https://www.ufihyd.com>).

HYDRAULIC FILTRATION



Looking for UFI filtration? Contact sales@antech-hyd.co.uk and a member of the team can assist you. Alternatively you can call +44 (0)1253 890037 (Option 1) or scan the QR code for more information.

Antech Hydraulics are the **exclusive UK partner** of NTF Micro Filtration products.

For more than 35 years, NTF has been a manufacturer of high-efficiency micro filtration products for vehicles, heavy-truck, industrial, marine, off-road, construction, and mobile markets. With both manufacturers and operators recognising the need for finer filtration to meet or exceed today's current cleanliness standards, NTF has become a vital product for the control of contamination.

By working offline or in bypass, NTF filtration removes solid particulate far smaller than full-flow inline filtration. Typically in the 1µm to 5µm range, these abrasive wear particles are highly damaging to all components, but in particular servo valves, fuel injectors, and other sensitive components where even the smallest particles can cause failure.

NTF elements will also remove water as standard.

NTF can be fitted from new or easily retrofitted to existing systems. Popular applications include:

- Industrial and mobile hydraulics
- Gearboxes
- Diesel generators
- Gas turbine and wind turbine lubrication systems
- Ship's engines, hydraulics and lubrication systems
- Automotive transmissions and engines



OFFLINE FILTRATION



We offer advice and consultancy on oil cleanliness. Contact sales@antech-hyd.co.uk and a member of the team can assist you. Alternatively you can call +44 (0)1253 890037 (Option 1) or scan the QR code for more information.

Antech Hydraulics are authorised distributors and UK partners of the Des-Case Corporation brand of breathers.

Working with customers across the UK and Internationally, Antech can supply Des-Case breathers on a next day delivery, due to their stock availability.

Des-Case desiccant breathers are air filter and water vapour removal systems, designed to replace traditional breather caps on gearboxes, reservoirs, storage tanks, or systems that contain oils or other fluids. The desiccant breathers prevent ingress of moisture and solid contaminants, thereby improving performance and reliability, prolonging oil life and reducing component failures.

Des-Case breathers are completely sealed and virtually indestructible, therefore being suitable for mobile and static applications in all environments.

Compatible with all mineral oils, most synthetic oils and diesel fuels.

Temperature Range: -20°F to 200°F (-29°C to 93°C)

Filter Efficiency: 3µm absolute

Colour Indication: Blue to Pink

Typical Applications include:

- Totes/Drums
- Storage Tanks
- Wind Turbines



DESICCANT BREATHERS



Looking for a supplier of Des-Case breathers? Contact sales@antech-hyd.co.uk and a member of the team can assist you. Alternatively you can call +44 (0)1253 890037 (Option 1) or scan the QR code for more information.

LJM Lind Jensen Hydraulic designs, develops, and manufactures hydraulic cylinders for the mobile, industrial, power generation, and food industries. Lloyds and DNV approved cylinders are available in certain ranges.

Cylinders are available in 25mm to 320mm bore with strokes up to 3200mm. There are a variety of mounting options available to suit your specification.

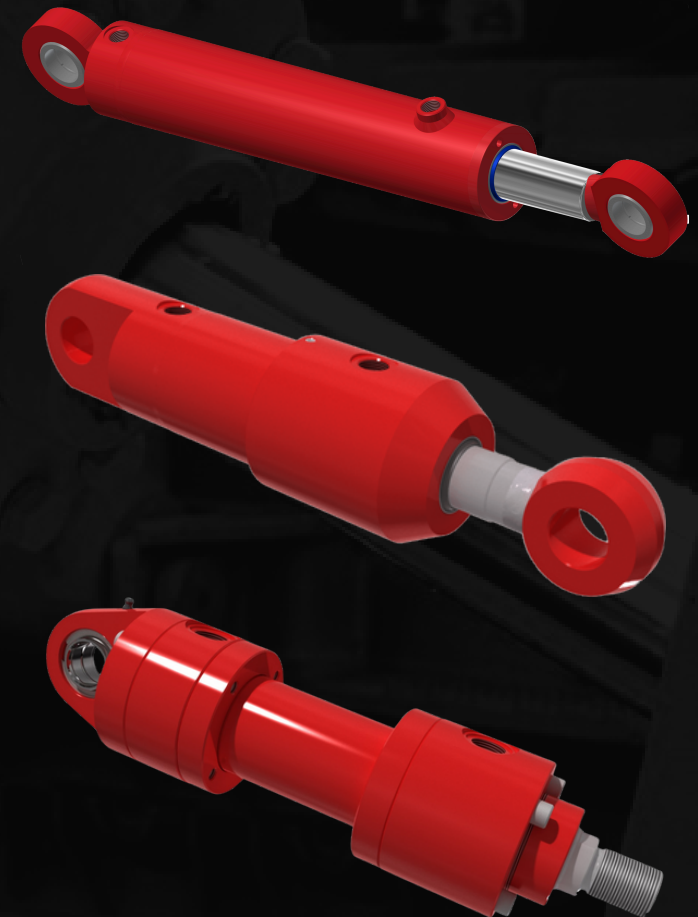
You can always rely on every cylinder produced by LJM to have the same optimal characteristics of quality, functionality, and economy.

LJM are proud to offer consistent quality and punctual delivery, something that Antech seeks in all its suppliers. *Antech are the only UK partner of LJM cylinders, cementing their relationship, providing technical support, and competitive pricing.*

LJM employs approximately 200 staff, with more than 12000m² of manufacturing and administration facilities.

LJM have also produced their own software to specify the correct cylinder for your requirements. Check out <http://www.cylinderconsultant.com> today. Alternatively, call the ANTECH team a call and they can support you.

HYDRAULIC CYLINDERS



Looking for an LJM cylinder? Contact sales@antech-hyd.co.uk and a member of the team can assist you. Alternatively you can call +44 (0)1253 890037 (Option 1) or scan the QR code for more information.

Telephone : +44 (0)1253 890037

Email: sales@antech-hyd.co.uk

Website: www.antech-hyd.co.uk



SPECIALISTS IN SYSTEM DESIGN & HYDRAULIC COMPONENTS