

# ARCHITECTURAL HERITAGE

GARDEN | SCULPTURE | INTERIOR



## ARCHITECTURAL HERITAGE

GARDEN | SCULPTURE | INTERIOR

It is with some degree of pride that we present here our 2018 Garden Catalogue. Every year we look to develop new items to enhance the collection under the broad umbrella of *Classic Modern* design. I interpret this as being timeless design manufactured to the highest quality to fit within both traditional and contemporary garden schemes.

All the products featured in this catalogue are, to a varying degree, inspired by the past and similarly fabricated in a traditional way, in the best and most appropriate materials by highly skilled craftsmen. Our quest is to preserve the legacy of the *Cotswold Arts & Crafts* tradition and to forge our own ethos – one where we look to fabricate garden ornament, planters and fountains for not just one lifetime, but for future generations to enjoy. This is what drives Architectural Heritage forward as we endeavour to be the best in what we do, by supplying exceptional quality garden ornament, coupled with second-to-none customer service, for our many loyal clients.

Alongside our garden collection we look to present a diverse selection of carefully curated antique garden ornament, sculpture and interiors. Our extensive inventory can be seen on our website and for email updates (about once every two months) a latest stock newsletter is available for all our registered clients – please do join by visiting our website on [www.architectural-heritage.co.uk](http://www.architectural-heritage.co.uk).

It only leaves me to thank you for your interest and I look forward to being of assistance.

With kind regards

Alex Puddy

## ARCHITECTURAL HERITAGE

GARDEN | SCULPTURE | INTERIOR







**FOUNTAINS  
& POOL  
SURROUNDS**





Installation and photograph by Cotswold Estates and Gardens Ltd

### The Two Tier Fountain

A two tier fountain in age patinated artificial stone taken from an 18th century original, each bowl having egg and dart carving to the rim, raised upon baluster pedestals with carved foliage. The upper bowl is surmounted by a pineapple finial. A pump pack is available.

Overall height  
8'7" [262cm]  
Overall diameter  
4'6" [137cm]  
Square at base  
2'2" [67cm]



Installation and photograph by Cotswold Estates and Gardens Ltd

### The Decorative Circular Pool Surround

An age patinated artificial stone circular pool surround having egg and dart decoration.

External diameter  
14' [426cm]  
Internal diameter  
12' [366cm]  
Height  
8½" [22cm]





**The Great Westwood  
Pool Surround**

A large and impressive  
age patinated artificial  
stone pool surround at  
6 metres diameter.

External diameter  
19' 8" [600 cm]

Height  
1' 1¼" [35 cm]





### **The Single Tier Fountain**

A single tier fountain in age patinated artificial stone, the bowl having egg and dart carving to the rim raised upon a baluster pedestal carved with acanthus foliage, with circular foot and square base. The bowl is surmounted by a spout in the form of a pineapple. A pump pack is available.

Overall height  
4' 1" [125 cm]  
Overall diameter  
2' 7½" [80 cm]  
Square at base  
1' 6" [45 cm]

### **The Circular Pool Surround**

An age patinated artificial stone circular pool surround.

External diameter  
10' 6" [320 cm]  
Height  
11" [28 cm]





### **The Square Pool Surround**

This age patinated artificial stone pool surround has many possibilities; squares, rectangles and rills. Illustration shows standard size.

Overall width 8' 7" [262cm]

Height 11" [28cm]



### **The Large Single Tier Fountain**

A large single tier fountain in age patinated artificial stone, the bowl having egg and dart carving to the rim, raised upon a baluster pedestal carved with acanthus foliage, with circular foot and square base. The bowl is surmounted by a spout in the form of a pineapple. A pump pack is available.

Overall height

5' [152.5cm]

Overall diameter

4' 5" [135cm]

Square at base

2' 2" [67cm]



**The Arched Back Wall Fountain**

A hand carved natural limestone wall fountain with arched back plate. A pump pack is available.

Height 4' 7¼" [140 cm]  
Width 3' 11¼" [120 cm]  
Depth 2' 3½" [75 cm]



**The Onslow Park Wall Fountain with Lead Spout**

A hand carved natural limestone wall fountain having a lead spout centred to the classical back plate. A bespoke fibreglass liner, tinted to match the stone, and pump pack, are available.

Height 5' 5" [165 cm]  
Width 4' 7" [140 cm]  
Depth 2' 10" [86 cm]





**The Neptune  
Wall Fountain with  
Lead Spout**

A large hand carved natural limestone wall fountain with lead spout. A pump pack is available.

Height 6' 5" [196 cm]  
Width 9' 8" [295 cm]  
Depth 4' 6" [137 cm]



**The Neptune  
Wall Fountain**

A large hand carved natural limestone wall fountain with central mask of Neptune. A pump pack is available.

Height 6' 5" [196 cm]  
Width 9' 8" [295 cm]  
Depth 4' 6" [137 cm]





**The River God  
Fountain Mask**

Hand carved from  
natural limestone.

Height 2' 2" [66 cm]

Width 2' [62 cm]

Depth 6" [16 cm]



**The Wall Fountain  
with Lion Mask**

A wall fountain in age  
patinated artificial stone,  
having arched back plate  
inset with a lead lion mask  
spout, raised above a 'D'  
shaped bowl with stepped  
rectangular base. A pump  
pack is available.

Height 5' [151 cm]

Width 2' 7" [80 cm]

Depth 1' 8" [51 cm]





**PLANTERS**





**The Square  
Copper Planters**

Hand crafted from heavy gauge brass, riveted together and then verdigris patinated to echo the Victorian antique originals.

**Small**

Height 1' 1¼" [35 cm]  
Width 1' 9¼" [54 cm]  
Depth 1' 9¼" [54 cm]

**Medium**

Height 1' 5¾" [45 cm]  
Width 2' 3" [68.5 cm]  
Depth 2' 3" [68.5 cm]

**Large**

Height 1' 11½" [60 cm]  
Width 2' 11¼" [89.5 cm]  
Depth 2' 11¼" [89.5 cm]

**Very Large**

Height 2' 5" [73.5 cm]  
Width 3' 3½" [100.5 cm]  
Depth 3' 3½" [100.5 cm]





**The Square  
Copper Planter  
Small**

Hand crafted from heavy gauge brass, riveted together and then verdigris patinated to echo the Victorian antique originals.

Height 1' 1 $\frac{3}{4}$ " [35 cm]

Width 1' 9 $\frac{1}{4}$ " [54 cm]

Depth 1' 9 $\frac{1}{4}$ " [54 cm]





**The Square  
Copper Planter  
Medium**

Hand crafted from heavy gauge brass, riveted together and then verdigris patinated to echo the Victorian antique originals.

Height 1' 5¼" [45 cm]

Width 2' 3" [68.5 cm]

Depth 2' 3" [68.5 cm]





**The Square  
Copper Planter  
Large**

Hand crafted from heavy gauge brass, riveted together and then verdigris patinated to echo the Victorian antique originals.

Height 1' 11½" [60 cm]  
Width 2' 11¼" [89.5 cm]  
Depth 2' 11¼" [89.5 cm]





**The Square  
Copper Planter  
Very Large**

Hand crafted from heavy gauge brass, riveted together and then verdigris patinated to echo the Victorian antique originals.

Height 2' 5" [73.5 cm]  
Width 3' 3½" [100.5 cm]  
Depth 3' 3½" [100.5 cm]





**The Circular  
Copper Planters**

Hand crafted from heavy gauge brass riveted together and then verdigris patinated to imitate the Victorian antique originals.

**Small**

Height 1' 1¼" [35 cm]  
Diameter 1' 9¼" [54 cm]

**Medium**

Height 1' 5¾" [45 cm]  
Diameter 2' 3" [68.5 cm]

**Large**

Height 1' 11½" [60 cm]  
Diameter 2' 11¼" [89.5 cm]

**Very Large**

Height 2' 5" [73.5 cm]  
Diameter 3' 3¾" [101 cm]





**The Circular  
Copper Planter  
Small**

Hand crafted from heavy gauge brass, riveted together and then verdigris patinated to imitate the Victorian antique originals.

Height 1' 1 $\frac{3}{4}$ " [35 cm]  
Diameter 1' 9 $\frac{1}{4}$ " [54 cm]





**The Circular  
Copper Planter  
Medium**

Hand crafted from heavy gauge brass, riveted together and then verdigris patinated to imitate the Victorian antique originals.

Height 1' 5 $\frac{3}{4}$ " [45 cm]

Diameter 2' 3" [68.5 cm]





**The Circular  
Copper Planter  
Large**

Hand crafted from heavy gauge brass, riveted together and then verdigris patinated to imitate the Victorian antique originals.

Height 1' 11½" [60cm]  
Diameter 2' 11¼" [89.5cm]





**The Circular  
Copper Planter  
Very Large**

Hand crafted from heavy gauge brass, riveted together and then verdigris patinated to imitate the Victorian antique originals.

Height 2' 5" [73.5 cm]

Diameter 3' 3/4" [101 cm]





**The Rectangular  
Copper Planters**

Hand crafted from heavy gauge brass, riveted together and then verdigris patinated to echo the Victorian antique originals.

**Small**

Height 1' 11½" [60 cm]  
Length 3' 11¼" [120 cm]

**Medium**

Height 1' 11½" [60 cm]  
Length 5' 10¾" [180 cm]

**Large**

Height 1' 11½" [60 cm]  
Length 7' 2½" [220 cm]

Available in two depths:  
Narrow 1' 8½" [52 cm]  
Wide 2' 3¼" [69 cm]





**The Rectangular  
Copper Planter  
Small**

Hand crafted from heavy gauge brass, riveted together and then verdigris patinated to echo the Victorian antique originals.

Height 1' 11½" [60cm]  
Length 3' 11¼" [120cm]

Available in two depths:  
Narrow 1' 8½" [52cm]  
Wide 2' 3¼" [69cm]





**The Rectangular  
Copper Planter  
Medium**

Hand crafted from heavy gauge brass, riveted together and then verdigris patinated to echo the Victorian antique originals.

Height 1' 11½" [60 cm]  
Length 5' 10¾" [180 cm]

Available in two depths:  
Narrow 1' 8½" [52 cm]  
Wide 2' 3¼" [69 cm]





**The Rectangular  
Copper Planter  
Large**

Hand crafted from heavy gauge brass, riveted together and then verdigris patinated to echo the Victorian antique originals.

Height 1' 11½" [60 cm]

Length 7' 2½" [220 cm]

Available in two depths:

Narrow 1' 8½" [52 cm]

Wide 2' 3¼" [69 cm]





**The Courtyard  
Copper Planters**

Hand crafted from heavy gauge copper, riveted together and then verdigris patinated to imitate the Victorian antique originals.

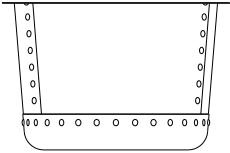
**Small**  
Height 1' 7¾" [50 cm]  
Diameter 3' 6" [107 cm]

**Medium**  
Height 1' 9½" [55 cm]  
Diameter 4' 2" [127 cm]

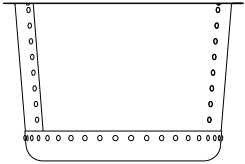
**Large**  
Height 2' ½" [62 cm]  
Diameter 5' 2¾" [159.5 cm]



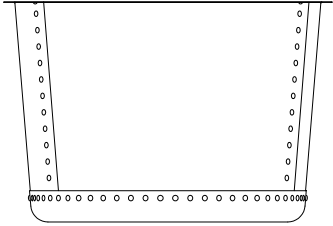
The Circular Copper Planters



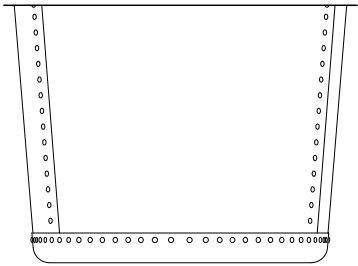
**Small**  
Height 1'1¾" [35cm] Diameter 1'9¼" [54cm]



**Medium**  
Height 1'5¾" [45cm] Diameter 2'3" [68.5cm]

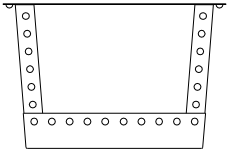


**Large**  
Height 1'11½" [60cm] Diameter 2'11¼" [89.5cm]

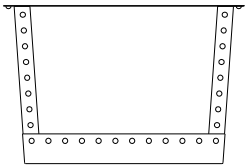


**Very Large**  
Height 2'5" [73.5cm] Diameter 3'3¾" [101cm]

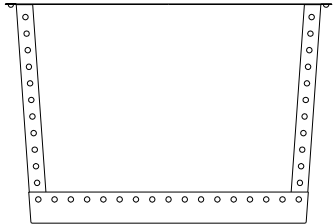
The Square Copper Planters



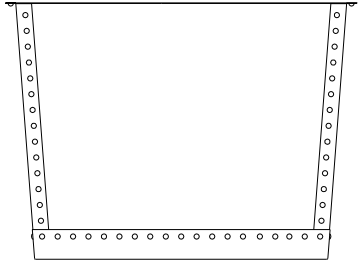
**Small**  
Height 1'1¾" [35cm] Width 1'9¼" [54cm]



**Medium**  
Height 1'5¾" [45cm] Width 2'3" [68.5cm]

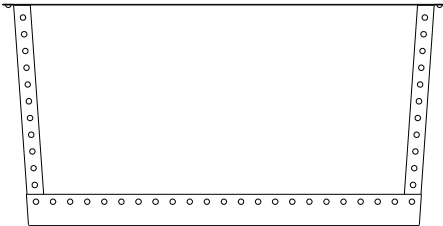


**Large**  
Height 1'11½" [60cm] Width 2'11¼" [89.5cm]

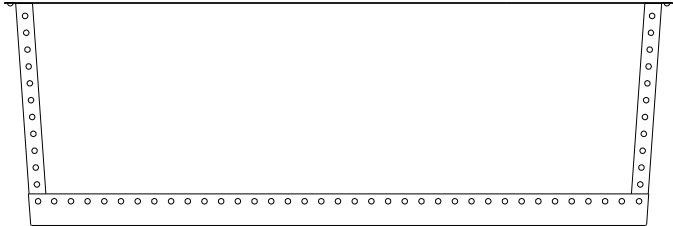


**Very Large**  
Height 2'5" [73.5cm] Width 3'3½" [100.5cm]

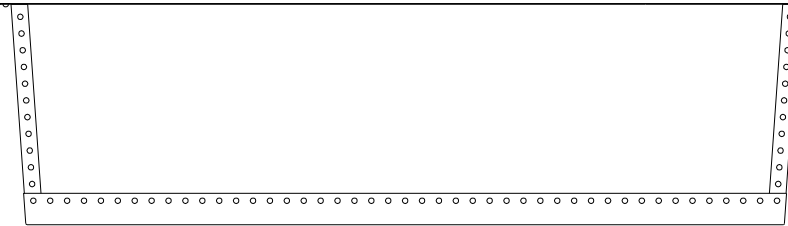
The Rectangular Copper Planters



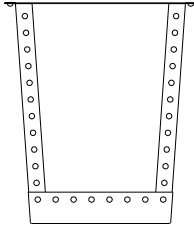
**Small**  
Height 1'11½" [60cm] Length 3'11¼" [120cm]



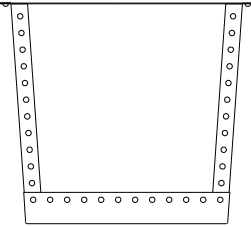
**Medium**  
Height 1'11½" [60cm] Length 5'10¾" [180cm]



**Large**  
Height 1'11½" [60cm] Length 7'2½" [220cm]

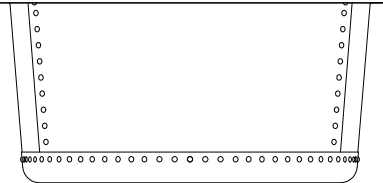


**Narrow**  
1'8½" [52cm]

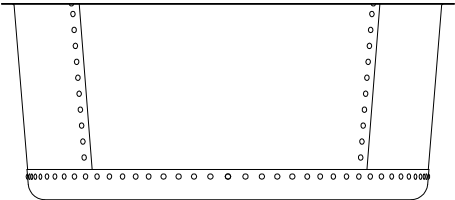


**Wide**  
2'3¼" [69cm]

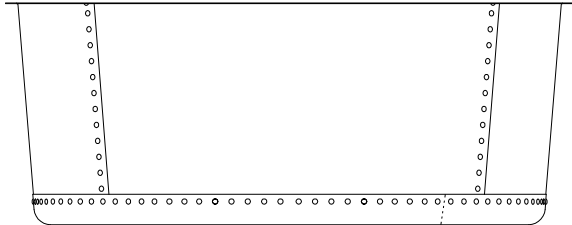
The Courtyard Copper Planters



**Small**  
Height 1'7¾" [50cm] Diameter 3'6" [107cm]



**Medium**  
Height 1'9½" [55cm] Diameter 4'2" [127cm]



**Large**  
Height 2'½" [62cm] Diameter 5'2¾" [159.5cm]





**The Lead Planters**

A range of hand crafted lead planters to our own designs, with bespoke commissions undertaken.





**The Estate  
Lead Planter**

A lead planter ornamented  
with recessed square  
panels.

Height 1'7¾" [50 cm]

Width 3'4" [101.5 cm]

Depth 1'7¾" [50 cm]

Bespoke commissions  
undertaken.



**The Estate  
Lead Planter  
Large**

A lead planter ornamented  
with recessed square  
panels.

Height 2'2" [66 cm]

Width 3'4" [101.5 cm]

Depth 2'2" [66 cm]

Bespoke commissions  
undertaken.





**The Townhouse  
Lead Planter  
Small**

A lead planter of circular form with drainage holes to base.

Height 1' 8" [51 cm]  
Diameter 2' [61 cm]



**The Townhouse  
Lead Planter  
Medium**

A lead planter of circular form with drainage holes to base.

Height 2' [61 cm]  
Diameter 2' 6" [76 cm]



**The Townhouse  
Lead Planter  
Large**

A lead planter of circular form with drainage holes to base.

Height 2' 6" [75 cm]  
Diameter 3' [91.5 cm]



**The Bromsgrove Guild  
Lead Planter**

A faithful copy of an early  
20th century model by the  
Bromsgrove Guild. An eight  
sided planter embellished  
with scenes and motifs  
relating to nature.

Height 1'7" [48 cm]  
Diameter 1'9" [61 cm]

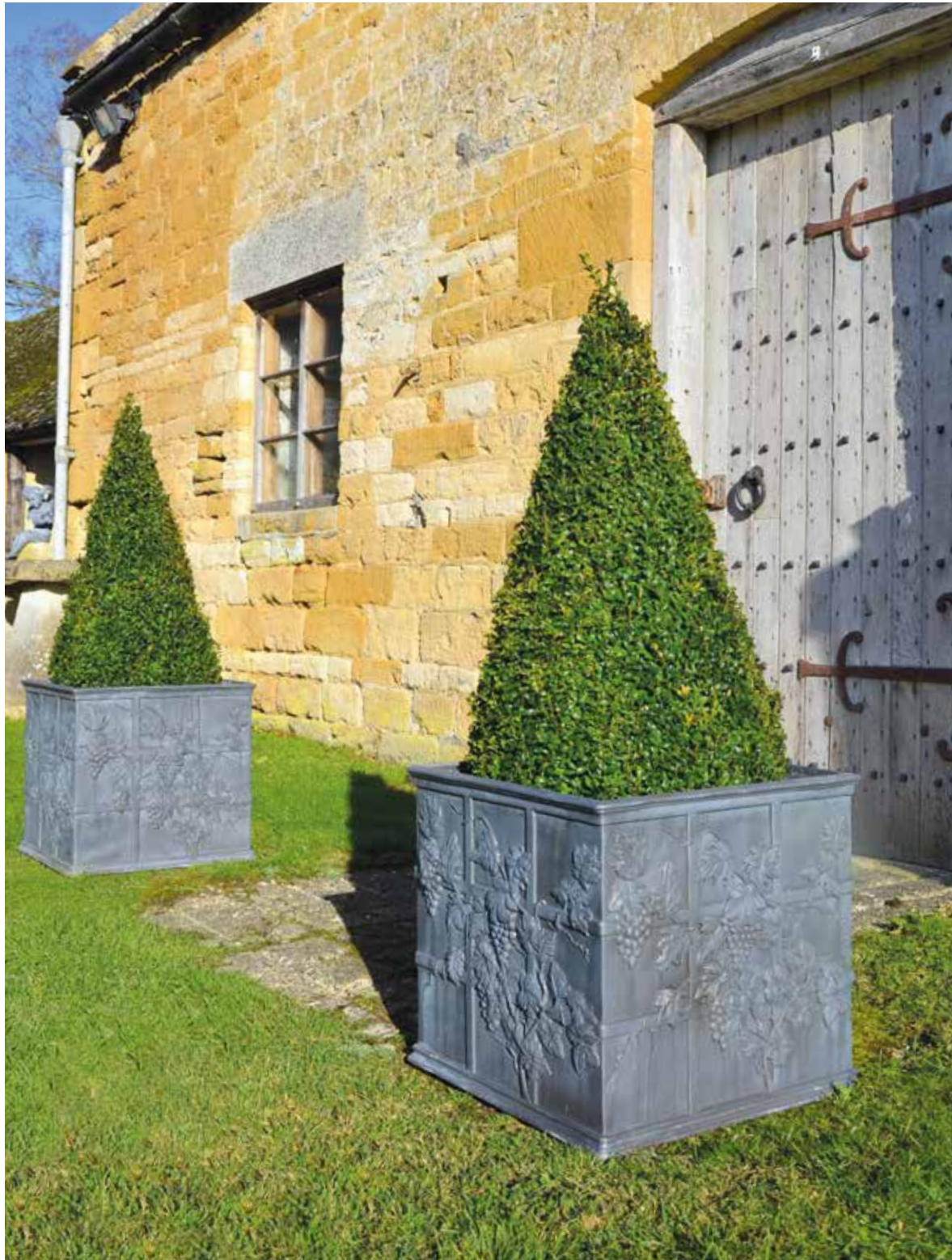


**The Cotswold Lion  
Lead Planter**

After the antique original,  
a fine quality lead garden  
planter of oval form  
having applied lion mask  
below the rim.

Height 1'8" [51 cm]  
Diameter 2' [61 cm]





**The Lattice Vine  
Lead Planter**

A lead planter of square  
form embellished with a  
lattice and vine decorative  
motif.

Height 1'7" [48 cm]

Width 1'8" [51 cm]

Depth 1'8" [51 cm]





**SEATS, BENCHES  
& TABLES**





**The Quercus Robur  
High Back Garden Seat**

An Arts & Crafts inspired garden seat carved from 6-year-old air-dried English Oak (Quercus Robur), of plank construction with keyed mortise and tenon joints.

Height 3' [91.5 cm]

Width 6' 6" [198 cm]

Depth 2' 5" [74 cm]





# **The Quercus Robur Garden Seat**

An Arts & Crafts inspired garden seat carved from 6-year-old air-dried English Oak (Quercus Robur), of plank construction with keyed mortise and tenon joints.

Height 2' 2½" [67 cm]  
Width 6' 6" [198 cm]  
Depth 2' 5" [74 cm]



# **The Quercus Robur Garden Bench**

An Arts & Crafts inspired garden bench carved from air-dried English Oak (Quercus Robur), of plank construction with keyed mortise and tenon joints.

Height 2' 2" [66 cm]  
Width 6' 6" [198 cm]  
Depth 1' 8½" [52.5 cm]





### **The Curved Neo-Classical Seat**

A hand carved natural limestone park seat of curved form having panelled back with central roundel, scrolled arm supports and volute feet.

Height 3' 3" [100cm]  
Width 9' 9" [313cm]  
Depth 1' 9" [53cm]



### **The Neo-Classical Seat**

A hand carved natural limestone seat having panelled back with central roundel, dentil moulded arm supports and feet with inswept plinth bases.

Height 3' 4" [102cm]  
Width 5' 5½" [166.5cm]  
Depth 1' 8¼" [51.5cm]





### **The Classic Curved Stone Bench**

A hand carved natural limestone bench having fluted supports and shaped seat.

Height 1' 7" [48cm]  
Width 4' 7" [140cm]  
Depth 1' 4" [41 cm]



### **The Classic Straight Stone Bench**

A hand carved natural limestone bench having rectangular top on fluted shaped supports.

Height 1' 7" [48cm]  
Width 4' 7" [140 cm]  
Depth 1' 4" [41 cm]





**The Quercus Robur  
Garden Dining Table**

A fine English 6-year-old air-dried carved oak table, joined by the distinctive pegged mortise and tenon joints, a trademark of The Architectural Heritage Quercus Robur Range. This fine table is made to last outside and will weather in time to a silver grey.

Height 2' 4½" [72.5 cm]  
Depth 3' 4" [102 cm]  
Length 9' [274 cm]  
Custom sizes available.





**The English Oak  
Garden Dining Table with  
Natural Limestone Top**

A mortise and tenoned English oak base supporting a solid natural limestone top.

Height 2' 4" [71 cm]  
Length 6' 10¾" [210 cm]  
Depth 2' 11½" [90 cm]



**The English Oak  
Garden Dining Table with  
Arabesque Marble Top**

A mortise and tenoned English oak base supporting a solid Italian Arabesque marble top.

Height 2' 4" [71 cm]  
Length 6' 10¾" [210 cm]  
Depth 2' 11½" [90 cm]





**SUNDIALS &  
ARMILLARIES**





### The Inverted Sundial Pedestal

A hand carved natural limestone sundial pedestal of tapering form, available with choice of armillary sphere.



With Zenith Armillary Sphere

Overall height  
5' 10" [178 cm]  
Square at base  
1' 1½" [34 cm]  
Sphere diameter  
1' 6½" [47 cm]



With Greenwich Armillary Sphere

Overall height  
6' 6" [198 cm]  
Square at base  
1' 1½" [34 cm]  
Sphere diameter  
2' 3½" [70 cm]



With Holborn Armillary Sphere

Overall height  
7' 6" [229 cm]  
Square at base  
1' 1½" [34 cm]  
Sphere diameter  
3' 1" [94 cm]





### **The Solstice Sundial Pedestal**

A hand carved natural limestone sundial pedestal of elegant baluster form. A choice of dial plate or armillary sphere is available.

With Zenith Armillary Sphere

Overall height  
5' 10" [178cm]

Square at base  
1' 2" [36 cm]

With Thomas Wright Dial Plate

Overall height  
3' 11½" [121 cm]

Square at base  
1' 2" [36 cm]





### **The Portmeirion Column with Zenith Armillary Sphere**

Taking inspiration from Clough Williams-Ellis' 'fantastic' creation, this item is pure folly. The column and base are hand carved in natural limestone and surmounted by a verdigris bronze armillary sphere.

Overall height  
11' 8" [356 cm]

Width at base  
1' 5½" [44 cm]





Image courtesy of Butter Wakefield Garden Design

### The William IV Sundial Pedestal

An age patinated artificial stone sundial pedestal, available with choice of armillary sphere.



With Zenith Armillary Sphere

Overall height  
5' 8½" [174 cm]  
Square at base  
2' 2½" [68 cm]  
Sphere diameter  
1' 6½" [47 cm]



With Greenwich Armillary Sphere

Overall height  
6' 6" [198 cm]  
Square at base  
2' 2½" [68 cm]  
Sphere diameter  
2' 3½" [70 cm]



With Holborn Armillary Sphere

Overall height  
7' 2" [218 cm]  
Square at base  
2' 2½" [68 cm]  
Sphere diameter  
3' 1" [94 cm]





### The Thomas Wright Sundial Plate

A verdigris bronze sundial plate being a faithful copy of the 18th century original by Thomas Wright Instrument Maker to George II.

Height  
8" [20 cm]  
Diameter  
1' [31 cm]



### The Zenith Armillary Sphere

A verdigris bronze armillary sphere, pierced with an arrow and calibrated with the hours. Mounted upon a bell shaped support.

Overall height  
2' 5" [74 cm]  
Sphere diameter  
1' 6½" [47 cm]  
Diameter at base  
6½" [17 cm]



### The Greenwich Armillary Sphere

A verdigris bronze armillary sphere, pierced with an arrow and calibrated with the hours. Mounted upon a bell shaped support.

Overall height  
3' 1" [94 cm]  
Sphere diameter  
2' 3½" [70 cm]  
Diameter at base  
6½" [17 cm]



### The Holborn Armillary Sphere

A verdigris bronze oversized armillary sphere, pierced with a decorative arrow and calibrated with the hours. Mounted upon a bell shaped support.

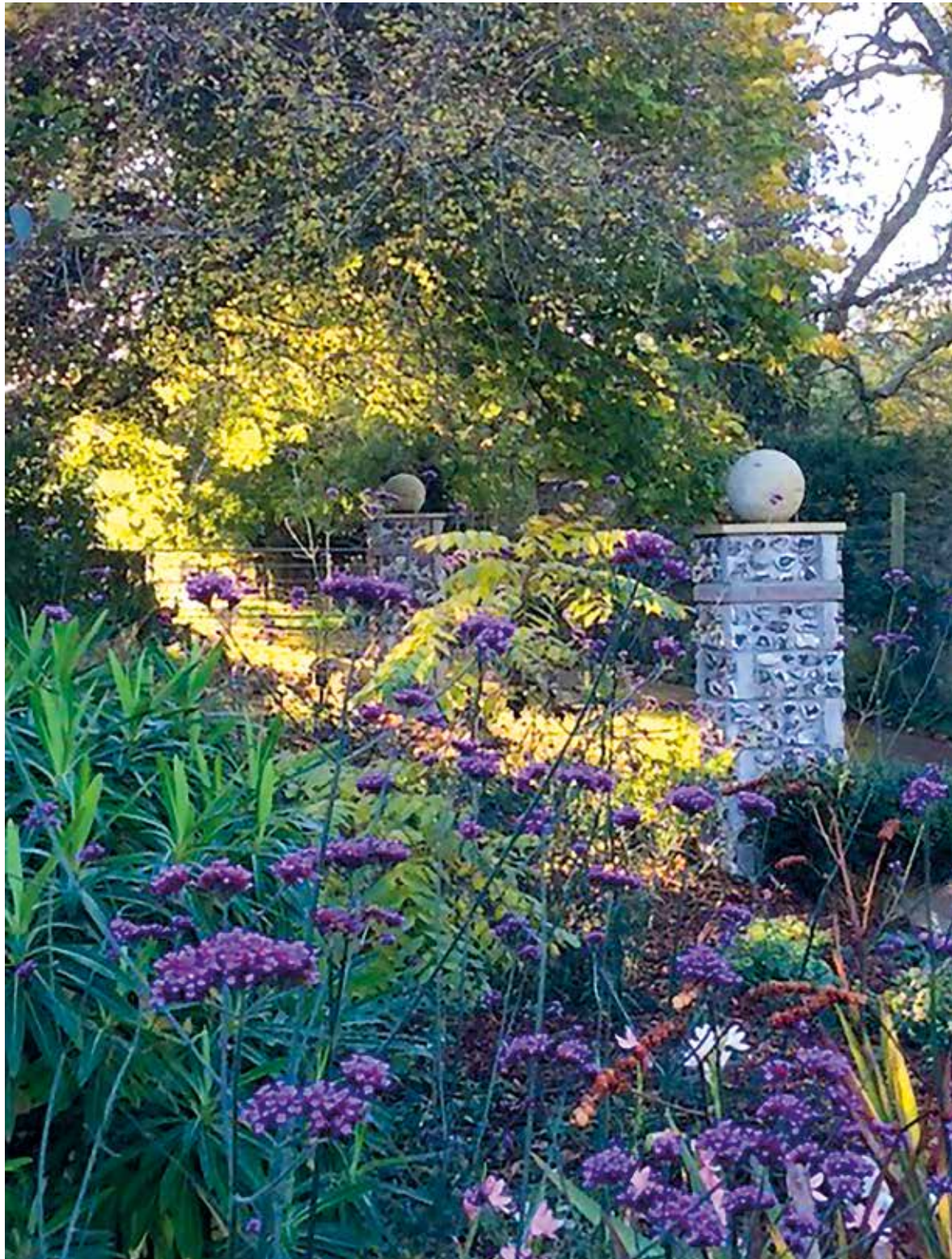
Overall height  
4' 1" [125 cm]  
Sphere diameter  
3' 1" [94 cm]  
Diameter at base  
6½" [17 cm]





**SPHERES &  
FINIALS**





**The Sphere**  
A collection of age patinated artificial stone spheres in three sizes. Perfect for driveway edging or as finials.





**The Sphere**  
**Small**

An age patinated artificial stone sphere. Perfect for driveway edging or as finials.

Diameter 1' 3" [38cm]





**The Sphere**  
**Medium**

An age patinated artificial stone sphere. Perfect for driveway edging or as finials.

Diameter 1' 6" [45.5cm]

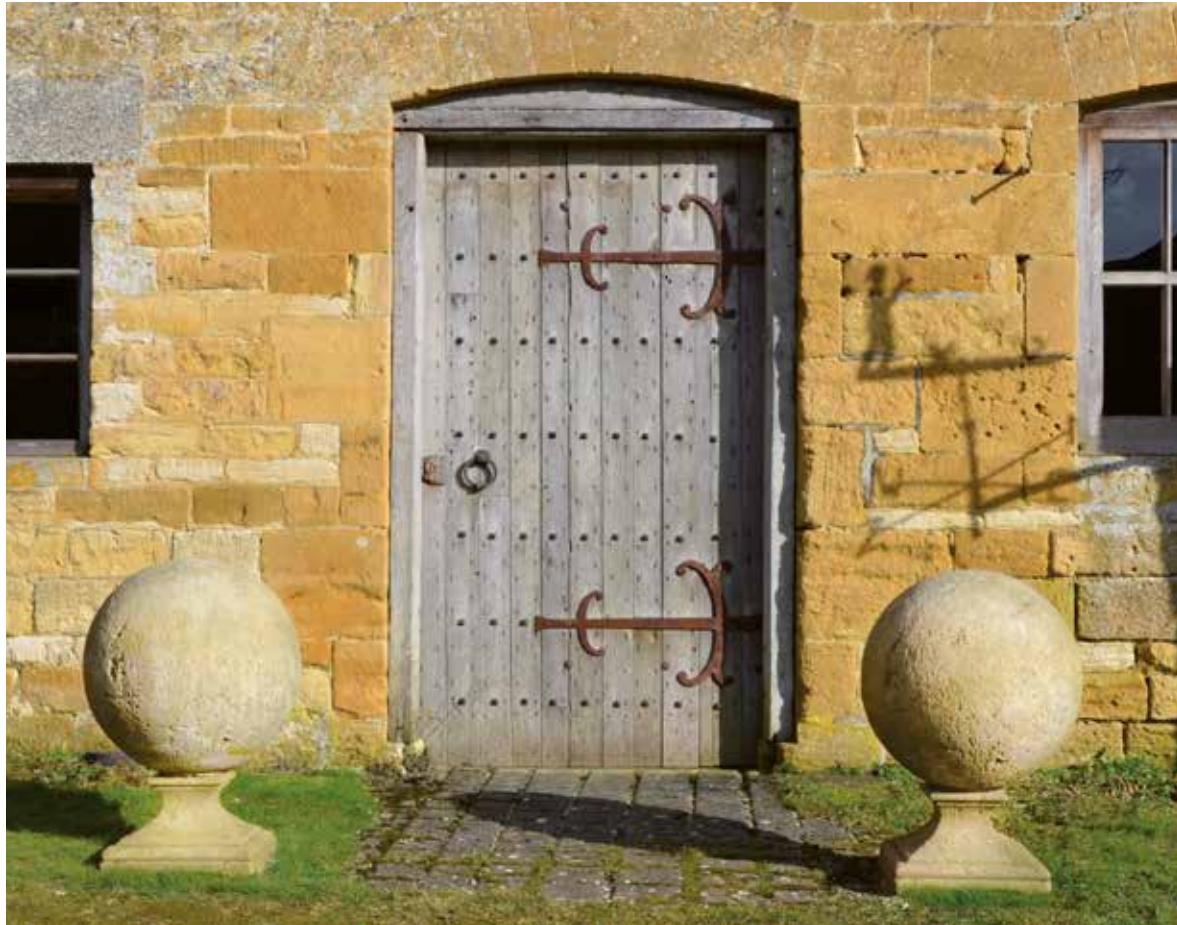


**The Sphere**  
**Large**

An age patinated artificial stone sphere. Perfect for driveway edging or as finials.

Diameter 1' 10" [56cm]





### The Large Sphere Finial

An age patinated artificial stone sphere raised upon square waisted socle.

Height 2' 7½" [80cm]  
 Sphere diameter 1' 10" [56cm]  
 Square at base 1' 3" [38cm]



### The Heritage Finial

An age patinated artificial stone lidded urn having circular socle and square base. The campana shaped body having lobed decoration to the bowl, the shaped lid surmounted by a finial.

Height 2' 9½" [84cm]  
 Diameter 1' 10" [56cm]  
 Square at base 1' [30cm]





**The Winged Lead Putti Finials**

A pair of winged lead Putti seated upon artificial stone spheres, after the 18th century originals.

Height 2' 10" [86 cm]

Width 2' [61 cm]





**GARDEN  
ORNAMENT  
& GARDEN  
STRUCTURES**





**‘Rudolph’ The Rusty Reindeer**

Available singularly or as a herd.

Height 2’5½” [75 cm]  
Width 2’4” [71 cm]



**The Rusty Blooms**

An assemblage of rusty iron tulips with stems and leaves, creating a flexible sculptural installation.  
Height 4’ [122 cm]



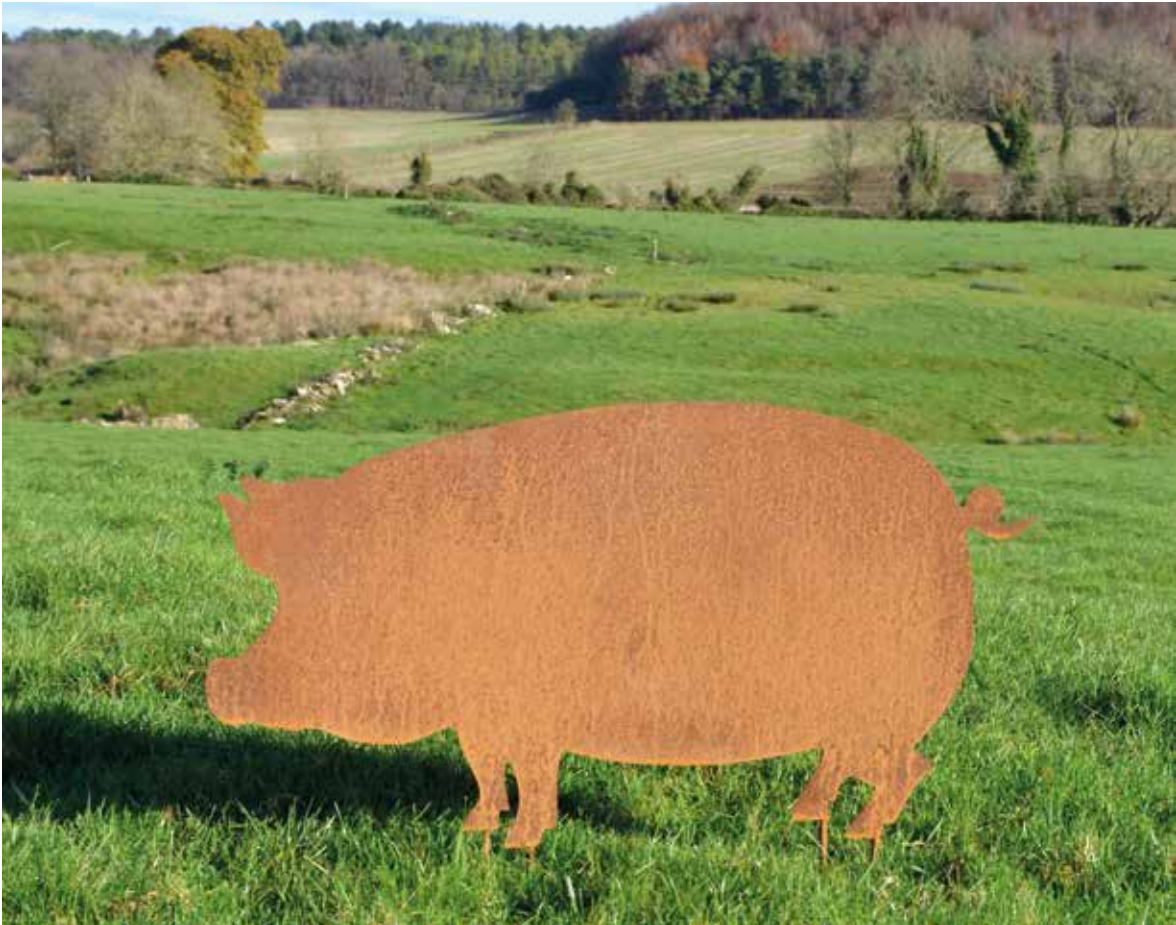


**‘Dolly’ The Rusty Sheep**

Available singularly or as a flock.

Height 1’8” [51 cm]

Width 1’9½” [55 cm]



**‘Colin’ The Rusty Pig**

Available singularly or as a sounder.

Height 1’7” [48 cm]

Width 3’1” [94 cm]





### **The Reclining Fawn**

An artificial stone statue depicting a reclining fawn with raised head, alert ears and small lead antlers.

Height 2' 6" [69cm]  
Length 3' 4" [102cm]  
Width 1' 4" [41cm]



### **The Bird Bath with Equatorial Sundial**

An age patinated artificial stone bird bath; the shallow circular bowl supports an equatorial dial calibrated with the hours, raised upon an ornate pedestal having acanthus decorations with a circular foot and a square base.

Height 4' 6" [137cm]  
Diameter 2' 7½" [80cm]  
Square at base 1' 6" [45cm]





### **The Tree of Life Wall Panel**

A hand punched and finished decorative wall panel incorporating a tree with birds of paradise.

Diameter 2' 10" [86.5 cm]

*Please note that this item will rust in time when outside*



### **The Obelisk**

A hand carved natural limestone obelisk of tapering square form raised upon a panelled square base supported by four spheres.

Height 6' 1½" [186 cm]

Width 1' 2" [36 cm]

Depth 1' 2" [36 cm]



**The Octagonal  
Vine Wellhead**

A hand carved natural limestone wellhead with stone step, wrought iron overthrow, pulley and chain.

Height 8' 4" [254 cm]

Width 4' 8" [142 cm]



**The Circular Wellhead**

A hand carved natural limestone wellhead complete with stone step, wrought iron overthrow, pulley and chain.

Height 8' [244 cm]

Diameter 4' 2" [127 cm]







### The Pergola

Bespoke commissions undertaken to supply hand carved natural limestone columns with English oak trellis.

Height 8' 2½" [250 cm]  
Width 10' 8" [315 cm]  
Depth 10' 8" [315 cm]



### Bespoke Commissions Undertaken

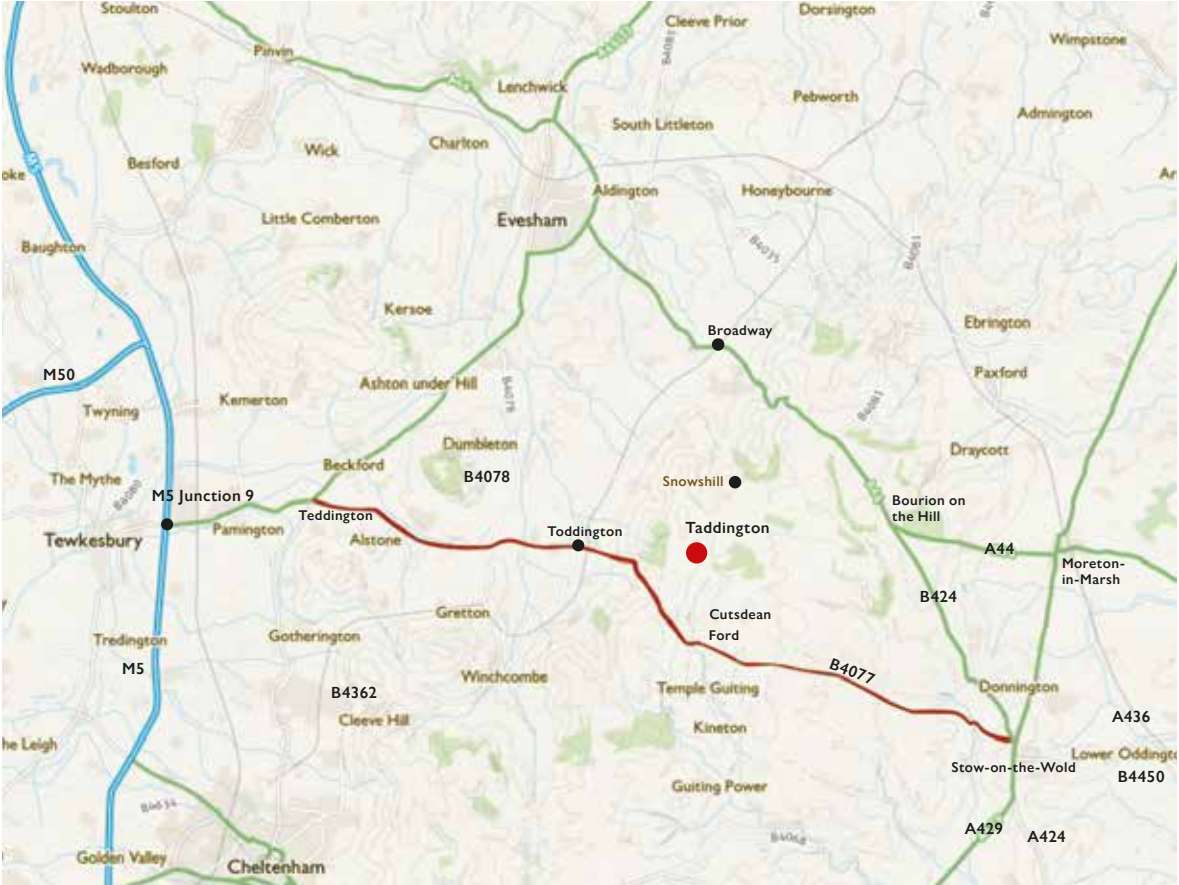
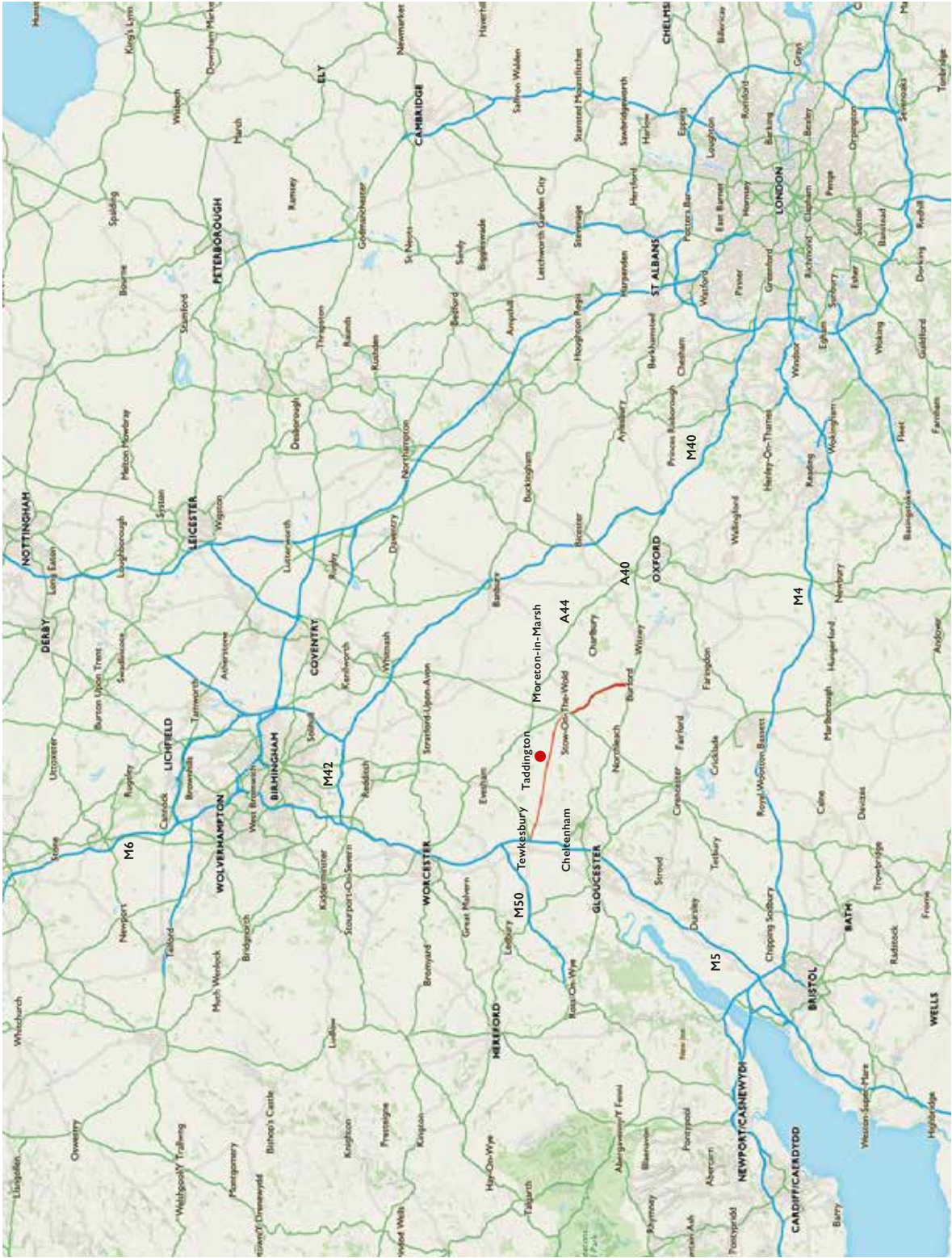
Illustrated – Royal Signals Memorial at The National Memorial Arboretum, Alrewas, Staffordshire, England.





INFORMATION





**Location**

Architectural Heritage is situated in the grounds of Taddington Manor, in the tiny hamlet of Taddington. The galleries and garden are open year round.

We are one hour away from Oxford, Bristol and Birmingham and two hours from London.





The British Antique Dealers' Association



The Association of Art and Antique Dealers



The Cotswold Art and Antique Dealers' Association



The Architectural Dealers' Association



Anti Copying in Design

## ARCHITECTURAL HERITAGE

GARDEN | SCULPTURE | INTERIOR

Taddington Manor  
Taddington, Nr. Cutsdean  
Gloucestershire  
England GL54 5RY  
office@architectural-heritage.co.uk  
www.architectural-heritage.co.uk  
Tel: +44 [0] 1386 584 414

9.00am – 5.00pm Monday – Friday  
Saturdays by Appointment  
Closed Sundays and Bank Holidays



Designed & typeset by etal design consultants. Printed  
in Great Britain by The Westdale Press Limited, on  
Arcoprint.

Copyright © Architectural Heritage 2018. All rights  
reserved. No part of this publication may be reproduced,  
transmitted, or stored in a retrieval system, in any form,  
or by any means, without permission in writing from  
Architectural Heritage.







# ARCHITECTURAL HERITAGE

GARDEN | SCULPTURE | INTERIOR

## PRICE LIST 2018

PAGE NO.	FOUNTAINS & POOL SURROUNDS	PRICE (EXCL. VAT)
4	The Two Tier Fountain	£ 6,600.00
	The Two Tier Fountain Pump Pack	£ 400.00
5	The Decorative Circular Pool Surround	£ 4,000.00
7	The Great Westwood Pool Surround	£ 6,000.00
8	The Single Tier Fountain	£ 2,800.00
	The Single Tier Fountain Pump Pack	£ 300.00
9	The Circular Pool Surround	£ 3,600.00
10	The Square Pool Surround	£ 3,600.00
11	The Large Single Tier Fountain	£ 3,800.00
	The Large Single Tier Fountain Pump Pack	£ 400.00
12	The Arched Back Wall Fountain	£ 3,600.00
13	The Onslow Park Wall Fountain with Lead Spout	£ 5,400.00
	The Onslow Park Wall Fountain Fibreglass Liner	£ 6,000.00
	The Onslow Park Wall Fountain Pump Pack	£ 300.00
14	The Neptune Wall Fountain with Lead Spout	£ 7,800.00
	The Neptune Wall Fountain Pump Pack	£ 300.00
15	The Neptune Wall Fountain	£ 7,800.00
	The Neptune Wall Fountain Pump Pack	£ 300.00
16	The River God Fountain Mask	£ 2,000.00
17	The Wall Fountain with Lion Mask	£ 2,600.00
	The Wall Fountain with Lion Mask Pump Pack	£ 300.00



PAGE NO.	PLANTERS	PRICE (EXCL. VAT)
23	The Square Copper Planter – Small	£ 900.00
25	The Square Copper Planter – Medium	£ 1,400.00
27	The Square Copper Planter – Large	£ 1,800.00
29	The Square Copper Planter – Very Large	£ 2,400.00
33	The Circular Copper Planter – Small	£ 800.00
35	The Circular Copper Planter – Medium	£ 1,300.00
37	The Circular Copper Planter – Large	£ 1,700.00
39	The Circular Copper Planter – Very Large	£ 2,200.00
43	The Rectangular Copper Planter – Small Narrow	£ 2,000.00
	The Rectangular Copper Planter – Small Wide	£ 2,200.00
45	The Rectangular Copper Planter – Medium Narrow	£ 2,500.00
	The Rectangular Copper Planter – Medium Wide	£ 2,700.00
47	The Rectangular Copper Planter – Large Narrow	£ 3,000.00
	The Rectangular Copper Planter – Large Wide	£ 3,400.00
49	The Courtyard Copper Planter – Small	£ 2,200.00
	The Courtyard Copper Planter – Medium	£ 2,800.00
	The Courtyard Copper Planter – Large	£ 3,400.00
54	The Estate Lead Planter	£ 2,600.00
55	The Estate Lead Planter – Large	£ 3,600.00
57	The Townhouse Lead Planter – Small	£ 1,800.00
58	The Townhouse Lead Planter – Medium	£ 2,400.00
59	The Townhouse Lead Planter – Large	£ 3,000.00
60	The Bromsgrove Guild Lead Planter	£ 1,800.00
61	The Cotswold Lion Lead Planter	£ 1,800.00
63	The Lattice Vine Lead Planter	£ 1,800.00



**PAGE NO. SEATS, BENCHES & TABLES****PRICE (EXCL. VAT)**

67	The Quercus Robur High Back Garden Seat	£ 5,600.00
68	The Quercus Robur Garden Seat	£ 4,400.00
69	The Quercus Robur Garden Bench	£ 3,600.00
70	The Curved Neo-Classical Seat	£ 5,800.00
71	The Neo-Classical Seat	£ 3,800.00
72	The Classic Curved Stone Bench	£ 800.00
73	The Classic Straight Stone Bench	£ 800.00
75	The Quercus Robur Garden Dining Table 9' [274cm] seats 10	£ 6,800.00
76	The English Oak Garden Dining Table with Natural Limestone Top	£ 3,400.00
77	The English Oak Garden Dining Table with Arabesque Marble Top	£ 3,800.00

**SUNDIALS & ARMILLARIES**

81	The Inverted Sundial Pedestal with Zenith Armillary Sphere	£ 1,800.00
81	The Inverted Sundial Pedestal with Greenwich Armillary Sphere	£ 2,000.00
81	The Inverted Sundial Pedestal with Holborn Armillary Sphere	£ 2,200.00
82	The Solstice Sundial Pedestal with Thomas Wright Sundial Plate	£ 1,600.00
83	The Solstice Sundial Pedestal with Zenith Armillary Sphere	£ 1,800.00
85	The Portmeirion Column with Zenith Armillary Sphere	£ 2,800.00
87	The William IV Sundial Pedestal with Zenith Armillary Sphere	£ 2,600.00
87	The William IV Sundial Pedestal with Greenwich Armillary Sphere	£ 2,800.00
87	The William IV Sundial Pedestal with Holborn Armillary Sphere	£ 3,000.00
88	The Thomas Wright Sundial Plate	£ 700.00
88	The Zenith Armillary Sphere	£ 900.00
89	The Greenwich Armillary Sphere	£ 1,100.00
89	The Holborn Armillary Sphere	£ 1,300.00



**PAGE NO.   SPHERES & FINIALS**

**PRICE (EXCL. VAT)**

95	The Sphere – Small	£	350.00
96	The Sphere – Medium	£	550.00
97	The Sphere – Large	£	750.00
98	The Large Sphere Finial	£	1,200.00
99	The Heritage Finial	£	1,200.00
101	The Winged Lead Putti Finials	£	3,800.00

**GARDEN ORNAMENT & GARDEN STRUCTURES**

104	'Rudolph' The Rusty Reindeer – each	£	200.00
105	The Rusty Blooms – each	£	40.00
106	'Dolly' The Rusty Sheep – each	£	120.00
107	'Colin' The Rusty Pig – each	£	250.00
108	The Reclining Fawn	£	1,600.00
109	The Bird Bath with Equatorial Sundial	£	2,600.00
110	The Tree of Life Wall Panel	£	300.00
111	The Obelisk	£	1,800.00
112	The Octagonal Vine Wellhead	£	4,600.00
113	The Circular Wellhead	£	3,600.00
114	The Pergola	£	7,600.00

**ARCHITECTURAL HERITAGE**

GARDEN | SCULPTURE | INTERIOR

Taddington Manor, Taddington, Nr.Cutsdean, Gloucestershire, England GL54 5RY

[office@architectural-heritage.co.uk](mailto:office@architectural-heritage.co.uk)

[www.architectural-heritage.co.uk](http://www.architectural-heritage.co.uk)

+44 [0] 1386 584 414