

[®]
Steintec



high performance paving mortars

Product Range and Installation Guide



About Us

The UK's leading supplier of high performance paving mortars.

Supplying the commercial and domestic markets.

We have many years experience nationally and internationally, contributing to projects with outstanding longevity and visual appeal. We recognise that paving projects represent a major investment to all involved so we're committed to helping ensure the outcome for every project is a success.

Contents

About Us.....	1
---------------	---

Commercial Range

tuffbed 2-pack - Permeable Low Carbon Bedding Mortar ..	3
- Application	4
tuffbed - High Performance Pre-Blended Bedding Mortar...	5
- Application	5
tuffbond - High Performance Bonding and Priming	6
- Application	6
tufftop - High Performance Jointing Mortar	7
- Application	8

Utility / Landscape Range

tuffbed Utility - Pre-Mixed Bedding Mortar	9
- Application	9
tuffbond Utility - Bonding and Priming Mortar	10
- Application	10
tufftop Utility - Jointing Mortar	11
- Application	12

Other High Performance Products

tuffset G - Specialist Rapid Mortar	13
- Application	14
tuffset 60 - Specialist Sixty Minute Multi-Purpose & Rapid Setting Mortar	15
tuffset 60 with tuffset G - Ironworks in Paved Areas.....	16
tufffix - High Performance Paving Repair Mortar	17
- Application	18
tuffgrit - Unbound Permeable Aggregate	19
- Application	19
Tools & Equipment.....	20
Weiss - Pavement Care.....	21
Technical Support & Advice	22

Case Studies, Technical Data, Method Statements and NBS Clauses are available on our website.

Phone: 0203 598 9800
Fax: 0203 384 9036

Email: mail@steintec.co.uk
Web: www.steintec.co.uk

Address:
1 Northwick Road, Canvey Island, Essex, SS8 0PU

tuffbed[®] 2-pack

High Performance Permeable Low Carbon Bedding Mortar



tuffbed 2-pack is a high performance bedding mortar exceeding the requirements of BS7533 for type A and type B mortars.

This two-part product requires no pre-drying or pre-blending of the aggregate content. The binder is packaged separately avoiding the need for energy intensive central processing. This reduces overall energy use and haulage.

Key Features

- Fully water permeable and frost resistant
- Low carbon footprint ([visit www.steintec.co.uk](http://www.steintec.co.uk) for information on low carbon construction)
- 40 min working time (10°C)
- 30-70 mm bedding depth
- Helps prevent moisture related paving issues
- Fully complies with BS 7533 type A and type B
- Suited to commercial and public realm projects
- Compatible with all types of paving; granite, natural stone, concrete and porcelain units



Ealing Broadway Shopping Centre

All mixing is carried out on site which makes tuffbed 2-pack suitable for commercial and larger public realm projects.

Bedding depths of between 30mm and 70mm can be placed in a single layer. Greater depths can be achieved by placing successive layers. Optimum versatility and workability is achieved with a minimum layer depth of 30mm.

It is a requirement of BS7533 that 'The laying course should be frost resistant and allow the passage of water through it after it has cured.'

tuffbed 2-pack meets this requirement and ALL other requirements of BS7533.



Technical Specification

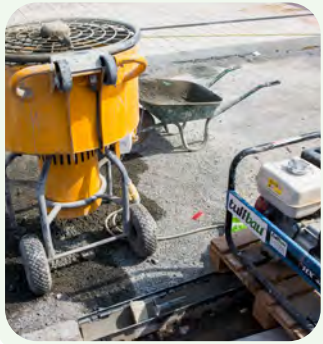
Colour	Grey	Compressive strength (20°C)	14 days: ~25 N/mm ² 28 days: ~35 N/mm ²
Packaging	Bag	Flexural strength	~7 N/mm ²
Packaging weight	25 kg	Permeability	~18 x 10 ⁻⁴ m/s
Bed depth	30 - 70 mm	Storage life	12 months from manufacture date
Typical water used	4-7 litres per 125 kg batch	NBS sections	M10 Q24 Q25
Typical coverage	30 mm: 60 kg/m ² 40 mm: 80 kg/m ² 50 mm: 100 kg/m ²	Compliance	BS 7533
Packages per pallet	40	Working time	40 min at 10°C 30 min at 20°C
Pallet quantity	1 tonne	Working temperature	2-30°C



Application



Step 1
Prepare equipment



Step 2
Clean paving and base



Step 3
Add the aggregate



Step 4
Add and mix the binder



Step 5
Add water



Step 6
Apply bonding mortar to base



Step 7
Place the tuffbed 2-pack



Step 8
Brush on the bonding mortar



Step 9
Tap unit down to level



Key Information

100kg of the aggregate (4x25kg bags) is mixed with one 25kg bag of the binder.

Mix thoroughly with a forced action mixer.

Add the water when the aggregate is evenly coated with tuffbed 2-pack. The mix consistency should be sticky, but not wet so that a ball can be formed in the palm of ones hand.

Allow 24 hours to set before walking on or starting jointing of the paving.

For trafficked applications, where there is a concrete base, a layer of tuffbond priming mortar should be applied to the concrete before the mixed bedding mortar is put in place. Bonding mortar where required, should be applied using a stiff brush.

High Performance Pre-blended Bedding Mortar



A high performance bedding mortar pre-blended for ease of use, in smaller scale commercial, public realm and domestic projects. tuffbed high performance bedding mortar is suitable for use in pavements constructed in concrete or natural stone paving units.

It is a requirement of BS7533 that 'The laying course should be frost resistant and allow the passage of water through it after it has cured.' tuffbed high performance bedding mortar meets this requirement and ALL other requirements of BS7533.

Key Features

- Pre-blended bedding mortar
- Suitable for shallow bedding depth of 15-50 mm
- Helps prevent moisture related paving issues typically associated with conventional mortars
- Fully complies with BS 7533 type A and type B
- Suitable for heavily trafficked areas
- Compatible with all types of paving; granite, natural stone, concrete and porcelain units
- Suited to commercial and public realm projects



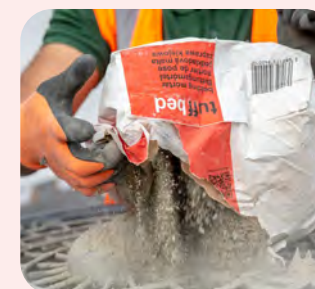
Technical Specification

Colour	Grey
Packaging	Bag
Packaging weight	25 kg
Bed depth	15 - 50 mm
Typical water used	3-4 litres per 25 kg
Typical coverage	15 mm: 27 kg/m ² 30 mm: 54 kg/m ² 50 mm: 90 kg/m ²
Packages per pallet	40
Pallet quantity	1 tonne
Working time	40 min at 10°C 30 min at 20°C
Working temperature	2-30°C
Compressive strength (20°C)	14 days: ~25 N/mm ² 28 days: ~35 N/mm ²
Storage life	12 months from manufacture date
NBS sections	M10, Q24, Q25
Compliance	BS 7533

Step 1 Clean paving units



Step 2 Mix with water in a forced action mixer



Step 3 Clean area



Step 4 Place tuffbed bedding mortar



Step 5 Brush on the bonding mortar



Step 6 Bed unit onto tuffbed mortar



Key Information

Add the water to achieve a mix consistency which should be sticky, but not wet and so that a ball can be formed in the palm of one's hand. Bonding mortar where required should be applied using a stiff brush. Allow 24 hours to set before walking on the paving.

For trafficked applications, where there is a concrete base present, a layer of tuffbond priming mortar should be applied to the concrete base before the mixed bedding mortar is put in place.

tuffbond

High Performance Bonding and Priming



A high performance bonding and priming mortar suitable for natural stone and pre-cast concrete paving units used in bound/rigid construction in commercial and public realm projects.

tuffbond greatly enhances the bond between the paving units and the laying course and where applicable between the laying course and supporting concrete structure/road-base.

Key Features

- Creates the essential adhesion bond between bedding and the paving element
- Applied to supporting concrete structures
- High resistance to shear forces and thermal stresses
- Polymer and resin free
- Provides full BS 7533 compliance in conjunction with tuffbed or tuffbed 2- Pack and tufftop jointing mortar



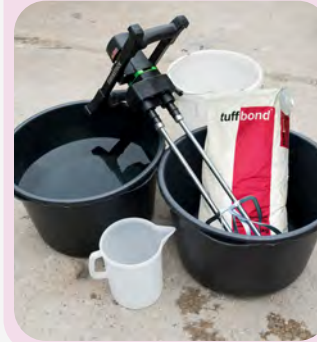
The Shard, London

tuffbond is brush applied as a 1-2mm thick layer to the underside of paving units and to the surface of the base/roadbase.

Technical Specification

Colour	Grey
Packaging	25 kg Bag
Adhesion	~2 N/mm ²
Consumption	~1.5 kg/m ² per layer
Typical water used	6.75 litres per 25 kg
Length of working time	40 min at 10°C 30 min at 20°C
Packages per pallet	40
Pallet quantity	1 tonne
Shelf life	12 months from manufacture date
Compliance	BS 7533

Step 1 Prepare equipment



Step 2 Mix water and tuffbond



Step 3 Clean area



Step 4 Brush apply tuffbond mortar to the base* and to the underside of the paving units



Step 5 Place paving unit on the bedding



* Where the base is in situ concrete or reinforced concrete

High Performance Jointing Mortar



tufftop is a high performance non-permeable, self compacting free flowing slurry applied jointing mortar suitable for pavements constructed in natural stone or concrete paving units.

The elastic modulus of tufftop is optimised to provide the correct supporting stiffness whilst continually absorbing the thermal and dynamic stresses inherent in bound pavements.

Key Features

- Self compacting jointing slurry mortar
- Four colours available
- Exceeds requirements of BS 7533
- Compatible with all types of paving; granite, natural stone, concrete and porcelain units
- Extremely high durability and low maintenance
- Polymer and resin free
- Easy to clean



Broadgate Circle, London

tufftop provides pavements with exceptional performance and durability including those in heavily trafficked environments.

tufftop jointing mortar available in four colours



Natural Grey



Mid Grey



Dark Grey



Beige

N.B. colours are indicative only

Unit with a 6mm joint width	m ² per 25kg
600x1200x20	50.00 m ²
400x800x20	31.25 m ²
800x600x63	12.50 m ²
600x400x50	11.36 m ²
600x900x80	10.40 m ²
600x900x80	2.06 m ²
100x100x80	1.58 m ²
80x80x80	1.29 m ²
100x100x100	1.26 m ²

Technical Specification

Colour	Beige, Natural Grey, Mid Grey & Dark Grey	Compressive strength (20°C)	14 days: ~30 N/mm ² 28 days: ~45 N/mm ²
Packaging	25 kg Bag	Flexural strength	~7.5 N/mm ²
Joint width	>3 mm	Elastic modulus	(20,000 ± 4,000) N/mm ²
Typical water used	4-5 litres per 25 kg	Adhesive bond	~1.5 N/mm ²
Typical coverage	www.steintec.co.uk/calculator/	Storage life	12 months from manufacture date
Packages per pallet	40	NBS sections	Q24 Q25
Pallet quantity	1 tonne	Compliance	BS 7533
Set time	24 hours		
Working time	30 min at 20°C		
Working temperature	2-30°C		

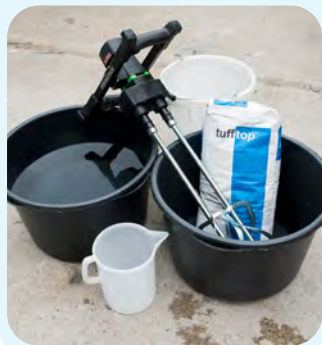


Cornhill Exchange, Ipswich

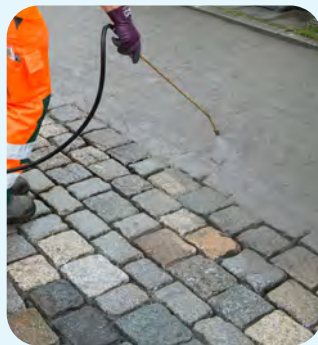
Application



Step 1 Prepare equipment



Step 2 Wash and wet paving



Step 3 Add water to a bucket or mixer



Step 4 Add tufftop and mix together



Key Information

Adding the water first helps avoid lumps, inconsistency, and unmixed material forming at the bottom edge of the bucket.

Use a paddle mixer.

It is important the pavement is entirely wet, to aid application, the complete filling of the joints and the final cleaning process.

Do **NOT** let mortar dry on the surface, spray with a light mist to keep moist while applying and cleaning, if necessary.

Step 5 Pour tufftop over wet paving



Step 6 Spread into joints



Step 7 Clean with sponge belt or float



Pre-mixed Bedding Mortar



NEW

tuffbed Utility is a pre-mixed bedding mortar packaged in moisture resistant 25 kg bags for convenience in storage, handling, mixing and application. Designed for use in domestic driveway, paths and patios as well as public realm, commercial projects which only have a type A bedding mortar requirement.

It is a requirement of BS7533 that 'The laying course should be frost resistant and allow the passage of water through it after it has cured.' tuffbed Utility bedding mortar meets this requirement and ALL other requirements of BS7533 for type A mortars.

Key Features

- Pre-mixed bedding mortar in a single bag
- Suitable for bedding depths of 30-70 mm
- Reduces the effect of efflorescence, frost damage and picture framing on paving
- Fully complies with BS 7533 type A bedding mortar
- Suitable for natural stone, porcelain, concrete and granite paving units
- Ideal for domestic and local authority utilities projects



3 Merchant Square, London

Technical Specification

Packaging	25 kg Bag
Bed depth	30 - 70 mm
Typical water used	2 litres per 25 kg
Typical coverage	30 mm: 60 kg/m ² 40 mm: 80 kg/m ² 70 mm: 140 kg/m ²
Packages per pallet	40
Pallet quantity	1 tonne
Working time	40 min at 10°C 30 min at 20°C
Working temperature	2-30°C
Compressive strength (20°C)	28 days: ~25 N/mm ²
Flexural strength	~3.5 N/mm ²
Permeability	~18.8 * 10 ⁻⁴ m/s
Storage life	12 months from manufacture date
Compliance	BS 7533 type A

Step 1 Clean area and paving units



Step 2 Mix with water in a mixer



Step 3 Check mix consistency



Step 4 Place tuffbed Utility bedding mortar



Step 5 Brush on the bonding mortar



Step 6 Bed unit onto tuffbed Utility bedding mortar



Key Information

Add the water to achieve a mix consistency which should be sticky, so that a ball can be formed in the palm of one's hand. Bonding mortar where required should be applied using a stiff brush. Allow 24 hours to set before walking on the paving.

For trafficked applications, where there is a concrete base present, a layer of tuffbond priming mortar should be applied to the concrete base before the mixed bedding mortar is put in place.

Bonding and Priming Mortar



tuffbond Utility is a bonding and priming mortar used to enhance the adhesion bond between the paving units and bedding mortar and where present, between the bedding mortar and supporting concrete structure.

For ease of use tuffbond Utility has been packaged in pre-measured sachets contained in a reusable, recyclable tub. With individual sachets only the required amount of tuffbond Utility is used and wastage is minimised.

Key Features

- Creates the essential adhesion bond between bedding and the paving element
- For small scale paved areas in; natural stone, porcelain, concrete and granite paving units
- A 1–2 mm thick coat of tuffbond utility, enhances adhesion by 100%
- Polymer and resin free
- Provides full BS 7533 compliance used in conjunction with tuffbed Utility and tufftop Utility jointing mortar



Technical Specification

Colour	Grey
Packaging	12 kg Tub (4x 3 kg Sachets)
Adhesion	~2 N/mm ²
Consumption	~1.5 kg/m ² per layer 8 m ² per tub
Typical water used	1 litre per 3 kg sachet
Length of working time	40 min at 20°C
Packages per pallet	36 - 45
Pallet quantity	460 kg
Shelf life	12 months from manufacture date
Compliance	BS 7533

Step 1 Prepare Equipment



Step 2 Wash underside of paving units



Step 3 Add 1 L of Water per sachet to tub



Step 4 Add sachet to tub and mix



Step 5 Brush apply 1-2mm thick coat to the paving unit



Step 6 Place primed paving unit on bedding



Key Information

Do **NOT** allow tuffbond Utility to dry, apply immediately prior to placing paving unit.

When laying on an in-situ or reinforced concrete base, tuffbond Utility should also be applied to the clean surface prior to placing the bedding mortar.

tuffbond Utility is applied with a stiff brush to the entire underside of each individual paving unit.

Jointing Mortar

NEW

Convenient and easy to use jointing mortar.

Requires just 2 litres of clean water added to the tub and mixed with a paddle mixer, to be ready to go.

Ease of use makes tufftop Utility ideal for smaller projects including driveways, pavements and patios.

Key Features

- Self compacting jointing slurry mortar
- For smaller commercial, domestic bound construction pavements, driveways and patios
- Four colours available; Natural Grey, Mid Grey, Dark Grey, Beige
- For paved areas in; natural stone, porcelain, concrete and granite paving units
- Complies with BS 7533
- Minimal maintenance required
- Polymer and resin free.



tufftop Utility has been developed to make things as easy as possible for all users. Supplied in a reusable and recyclable tub.

The individual sachets in each tub ensure the correct amount of tufftop Utility is used and wastage is minimised.

The carefully measured contents of each sachet are mixed with exactly 1 litre of water.

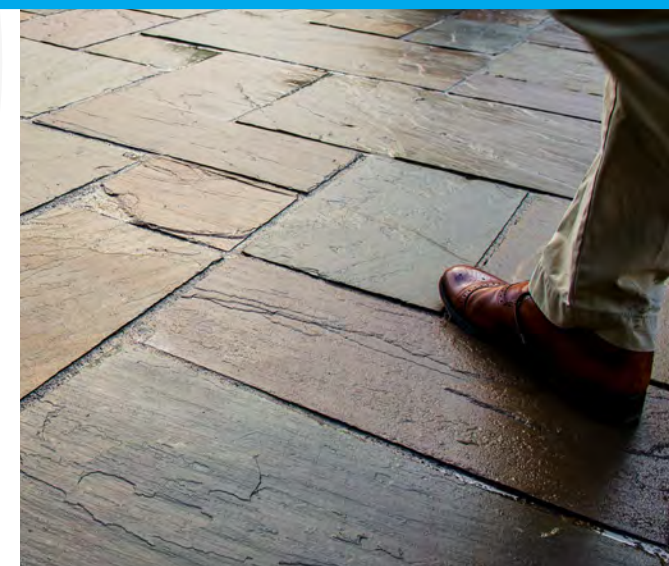
Paving unit size	Joint width	m ² per (11kg) tub
1200 x 600 x 22 mm	4 mm	25 m ²
600 x 900 x 22 mm	8 mm	12.22 m ²
400 x 800 x 22 mm	8 mm	9.16 m ²
300 x 600 x 22 mm	8 mm	7.33 m ²
600 x 900 x 30 mm	10 mm	7.33 m ²
600 x 600 x 30 mm	10 mm	6.11 m ²
300 x 600 x 30 mm	10 mm	4.23 m ²
450 x 450 x 32 mm	10 mm	4.40 m ²
600 x 900 x 50 mm	10 mm	4.58 m ²
600 x 600 x 50 mm	10 mm	3.79 m ²
300 x 600 x 50 mm	10 mm	2.56 m ²
100 x 100 x 100 mm	6 mm	0.56 m ²



N.B. colours are indicative only

Technical Specification

Colour	Beige, Natural Grey, Mid Grey & Dark Grey	Compressive strength (20°C)	7 days: ~20 N/mm ² 28 days: ~25 N/mm ²
Packaging	11 kg Tub (2x 5.5 kg Sachets)	Flexural strength	~3.5 N/mm ²
Joint width	>4 mm	Elastic modulus	(20,000 ± 4,000) N/mm ²
Typical water used	1 litre per 5.5 kg sachet	Adhesive bond	~1.5 N/mm ²
Typical coverage	www.steintec.co.uk/calculator/	Storage life	12 months from manufacture date
Packages per pallet	36 - 45	Compliance	BS 7533
Pallet quantity	420 kg		
Set time	24 hours		
Working time	30 min at 20°C		
Working temperature	2-30°C		



Application



Step 1 Prepare Equipment



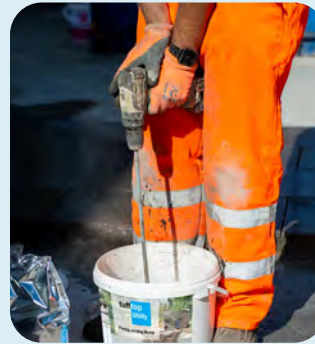
Step 2 Wash and wet paving



Step 3 Add 1L of water per sachet to tub



Step 4 Add sachet to tub and mix



Key Information

It is important the pavement is entirely wet, to aid application, the complete filling of the joints and the final cleaning process.

Do **NOT** let mortar dry on the surface, spray with a light mist to keep moist while applying & cleaning, if necessary.

Step 5 Pour mortar over wet paving



Step 6 Spread tufftop Utility to fill joints



Step 7 Clean using a squeegee with water and/or a sponge float



Specialist Rapid Mortar



A specialist multi-purpose paving mortar.

tuffset G can be used for top to bottom reinstatement of an entire paving structure.

Ideal for overnight rapid repairs and raised traffic tables. Capable of being subjected to heavy trafficking in 3 hours.

Bedding mortar

Use as a high-speed early strength gain bedding mortar. Suitable for three hour trafficking at 20°C.

Bonding mortar

Mixed as a high adhesion slurry paste, for application with a trowel or stiff brush.

Jointing mortar

Add water to tuffset G and use a paddle mixer or forced action mixer to produce a highly plastic, pourable jointing grout.

As Rapid / overnight concrete re-instatement
Renewal of an entire paving structure.

Key Features

- Ready for heavy traffic within 3 hours
- 30-70 mm bedding depth
- Multi-purpose: bedding, priming, jointing, emergency repairs & filling around gully and manhole frames in carriageways
- Available in three colours
- Free of chemical admixtures, polymers & resins
- Exceeds BS 7533 requirements for bedding, bonding and jointing.



King's Cross, London

Technical Specification

Colour	Natural Grey, Mid Grey & Dark Grey	Flexural strength	~7.5 N/mm ²
Packaging	25 kg Bag	Elastic modulus	(20,000 ± 4,000) N/mm ²
Bed depth layer range	30 mm - 70 mm	Adhesive Bond	~3 N/mm ²
Joint width	>3 mm	Storage life	12 months from manufacture date
Packages per pallet	40	NBS sections	Q24 Q25
Pallet quantity	1 tonne	Compliance	BS 7533
Set time	3 hours		
Working time	15 min at 20°C		
Working temperature	-2-30°C		
Compressive strength (20°C)	(1:1 mix) 1 hr: ~27 N/mm ² ; 24 hrs: ~50 N/mm ²		

tuffset G is available in three colours.



N.B. colours are indicative only



Sidcup High Street

Application



Installed as bedding

Mix aggregate and tuffset G using a forced action mixer.

Do not mix more material than will be used within about 15 minutes at an ambient 20°C.

After laying, the paving surface must be thoroughly washed with water to remove any surplus mortar from the surface.

Quarantine the newly laid paving units for 60 minutes before commencing the jointing process with tuffset G.



Installed as bonding

To prepare as priming mortar, tuffset G should be mixed with just enough water to form a thick, pasty slurry.

Only quantities that will be used within approximately 15 minutes at an ambient 20°C, should be mixed.

Use a stiff brush to apply the mortar to the cleaned underside of the paving unit.



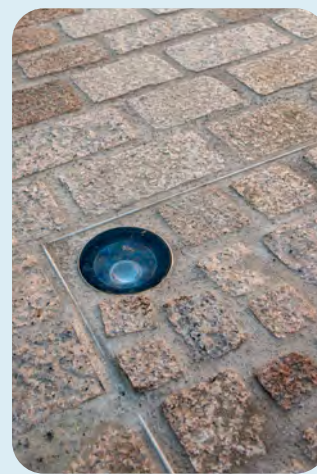
Installed as jointing

Do not mix more material than will be used within about 15 minutes at an ambient 20°C.

It is important the pavement is entirely wet, to aid application, the complete filling of the joints and the final cleaning process.

Do NOT let mortar dry on the pavement surface, spray with a light mist to keep moist while applying and cleaning.

Clean with a sponge belt or sponge float.



Installed as concrete

tuffset G can be used as a rapid repair concrete when mixed with tuffgrit aggregate.

tuffset 60

Sixty Minute Multi-Purpose Rapid Setting Mortar



A supportive high performance mortar for the placing and levelling of iron works and street furniture in carriageways and pavements.

Suitable for public realm and commercial areas, carriageways and pavements, especially in locations subject to constant heavy vehicle trafficking.

Key Features

- Rapid setting (60 minutes) and strength gain
- 20 minute working time
- Placing and levelling of ironwork in areas of heavy traffic
- Durable solution for emergency works
- Frost resistant & highly durable
- Higher performance alternative to sand and cement mixtures
- Polymer and resin free



Luton Town Centre

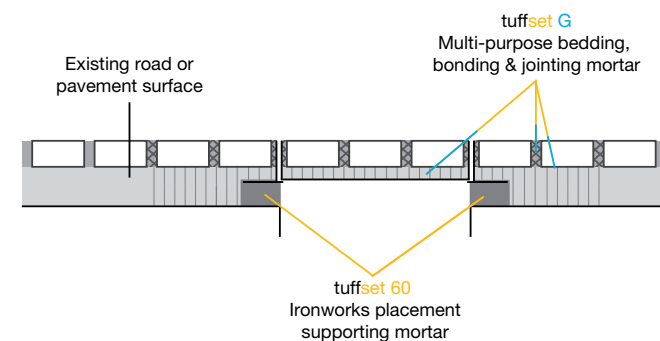
System installation of tuffset 60 with Steintec's tuffset G achieves compliance with DMRB HD27/04 3.11.



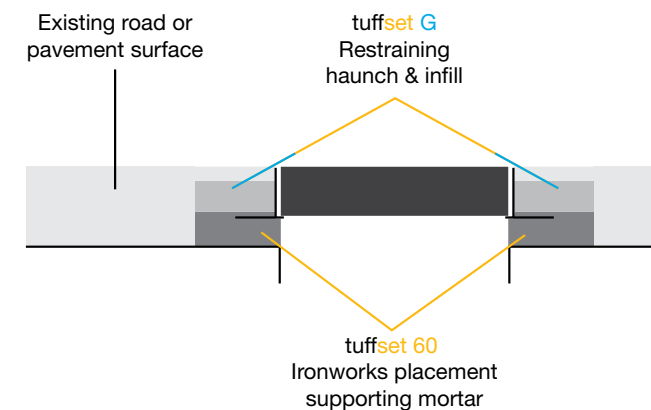
Technical Specification

Colour	Grey	Storage life	12 months from manufacture date
Packaging	Bag	NBS sections	P31 R12 Q24 Q35
Packaging weight	25 kg		
Bed depth	10 - 50 mm		
Typical water used	3 litres per 25 kg		
Packages per pallet	40		
Pallet quantity	1 tonne		
Set time	1 hour		
Working time	20 minutes		
Working temperature	2-30°C		
Compressive strength (20°C)	1 hr: ~25 N/mm ² ; 3 hrs: ~30 N/mm ² ; 24 hrs: ~40 N/mm ²		

Recessed cover in a paved area



Standard Ironworks cover in a carriageway



tuffset 60 tuffset G

with

Using tuffset 60 and tuffset G for ironworks in paved areas

tuffset 60 combined with tuffset G provides a solution for the rapid structural placement of ironwork frames in heavily trafficked carriageways and paved areas with a return to trafficking in just 4 hours. On-site mixing of tuffset 60 and tuffset G is quick and easy.

Step 1 Prepare equipment



Step 2 Mix Water and tuffset 60



Step 3 Build up supporting bed and position ironwork



Step 4 **Confirm correct level and adjust**



Step 5 Allow 60 minutes to set



Step 6 Mix and pour tuffset G to level



Step 7 Lay surface course



Key Information and features

If reinstating an existing installation, remove all loose/failing brick/blockwork.

Ensure tuffset 60 fills any voids beneath the frame.

Once the tuffset G becomes hard a surface course can be laid i.e. granite setts or bituminous wearing course.

Alternatively tuffset G can be used as the surface course.

Open to full traffic after 4 hours of placing tuffset G mortar.

Advantages are:

- Rapid strength gain (similar products have a rapid set but don't gain strength so quickly, leading to premature failure if trafficked too soon).
- Workability
tuffset 60; a supportive mortar with a consistency similar to a stiff sand/cement mix.
tuffset G; a flowable mix that adheres to surrounding substrate and fills voids to structurally secure the ironwork frame.
- Ease of use (quickly and easily mixed on site in a mixer or tub with only the addition of water).

High Performance Paving Repair Mortar

NEW



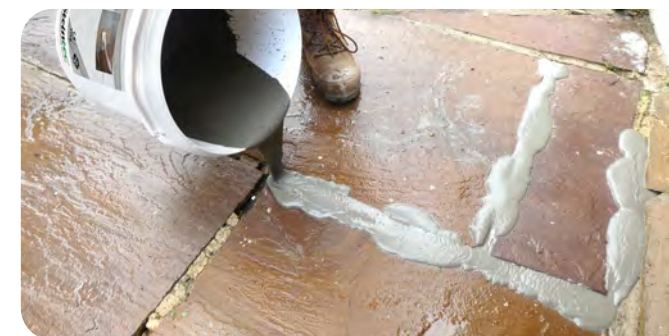
tuffix can rejuvenate old paving, giving it a new lease of life, alleviating the need to fully lift and re-lay.

Old paving, often laid on sand/cement, which has cracked and broken joints and rocking pavers can be renovated with tuffix.

The thick flowable slurry mortar fills voids and replenishes joints to provide a structural repair.

- Three simple steps to replenish damaged paving with tuffix;
1. Remove all loose material from joints and thoroughly clean, ideally with a pressure washer.
 2. Pour tuffix in to the joints.
 3. Remove any excess using a sponge float.

The longevity of a repair carried out with tuffix will depend on the condition and quality of the existing structure, how heavily it is trafficked, and how well it is prepared.



Key Features

- Economically extends life of old paving.
- Dramatically improves appearance.
- Quick and easy to apply,
- Saves time and money.
- Repairs cracked, broken and missing jointing mortar.
- Stabilises loose and rocking pavers.
- For all types of paving module; Setts, slabs, flags, blocks, etc.
- Paths, patios, pavements and driveways.



The Golden Eagle, Portsmouth

Technical Specification

Colour	Natural Grey	Flexural strength	~7.5 N/mm ²
Packaging	Tub	Elastic modulus	(20,000 ± 4,000) N/mm ²
Packaging weight	11 kg (2x 5.5 kg Sachets)	Storage life	12 months from manufacture date
Joint width	>3 mm	Compliance	BS 7533
Typical water used	1 L per 5.5 kg sachet		
Packages per pallet	36 - 45		
Pallet quantity	420 kg		
Set time	3 hours		
Working time	15 min at 20°C		
Working temperature	2-30°C		
Compressive strength (20°C)	1 hr: ~27 N/mm ² ; 24 hrs: ~50 N/mm ²		



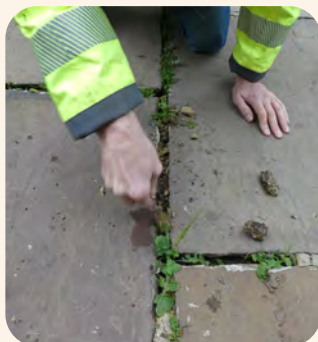
Application



Step 1
Prepare equipment



Step 2
Remove organic material and loose jointing



Step 3
Thoroughly prepare joints



Step 4
Add 1L of water per sachet used



Key Information

It is important the pavement is entirely wet, to aid application, the complete filling of the joints and the final cleaning process.

Do **NOT** let mortar dry on the surface, spray with a light mist to keep moist while applying & cleaning, if necessary.

Only mix and apply one sachet at a time. Do not mix more material than will be used within about 15 minutes at an ambient 20°C.

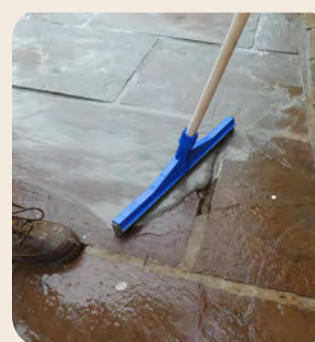
Step 5
Add sachet and mix



Step 6
Pour mortar onto wet paving



Step 7
Spread mortar **to fill joints and** remove excess



Step 8
Clean using a squeegee or **sponge float**



tuffgrit®

Permeable Aggregate



A crushed igneous rock aggregate suitable for use as the laying course material for conventional unbound modular pavements and as the laying course and jointing material in SuDS permeable unbound modular pavements.

Applications include driveways, public realm, commercial areas, patios and pavements using any paving units.

Key Features

- Water permeable (SuDS)
- 2-6 mm natural aggregate
- Available in 25kg bags or bulk bags
- Highly durable
- As described in EN 13242
- Complies with BS 7533

tuffgrit is blended for optimum interlock of the angular particles, actively extending the durability of unbound/flexible pavements.

Technical Specification

Colour	Grey
Packaging	Bag or Bulk bag
Packaging weight	25 kg or 850 kg (dry weight)
Aggregate size	2-6 mm
Packages per pallet	40 bags or 1 Bulk bag
Joint width	8+ mm
NBS sections	Q24 Q25
Compliance	BS 7533



tuffgrit®

Application

Clay pavers & concrete blocks with nibs

Step 1
Screed tuffgrit and compact bedding before laying units



Step 2
Units laid tightly together with ≥ 5mm nibs



Cropped Setts

Step 1
Spread loose tuffgrit bedding



Cropped Setts

Step 2
Tap setts down tightly together and to level



All

Step 3
Sweep tuffgrit into joints



Step 4
Compact and repeat steps 3 & 4 until joints are full



Tools & Equipment

While few special tools are required to use tuffbau's range of products, there are some that can make life easier and massively improve efficiency on site. The range of products illustrated here is a selection of favourites based on our own experience and feedback from the trade.

Mixing

Forced action mixer

Paddles are driven through the mixing pan, combining materials in a way that a kitchen mixer would mix the ingredients for a cake.



Paddle mixers

The electric paddle mixer is ideal for the rapid, thorough and even mixing of many of our mortars.



Pergo®

The Pergo® range of grout cleaning machines have a continuous sponge belt that is fed through a water bucket and rollers. Assisting in finishing large paved areas.



Spare belts and accessories

Replacement continuous sponge belts, parts and Weiss ES100 defoamer.



Cleaning & Hand Tools

Washboy kit

The 23-litre bucket comes supplied with a sponge faced hand trowel. It is very simple to use and has an easy to clean double roller that sits on top of the bucket and makes light work of cleaning the sponge.



Paver's mallet

Durable weighted mallet with two non marking head options. Rubber and Super-plastic heads with either a cast iron or aluminium housing.

Foam Rubber Squeegee

For the application of slurry grout. Designed to push materials into the paving joints, as well as removing surface residues. As easy to use as a stiff broom.





Pavement Care

Protection

FT Plus

A wet-look colour enhancer for natural stone and concrete paving, that also provides stain protection against marks made by grease, oils, fats, fast food, tyre rubber and footwear. It is an excellent and effective impregnator.



Stain Protect Profi

Absorbed into the pores of the paving surface, FT Plus provides excellent protection for natural stone and pre-cast concrete against stubborn pavement grime.



Onex Concentrate

Removes and helps prevent algae and moss stains within hours of application. Continues to work for weeks after to prevent further regrowth.



Install

A pre-construction protection for all paving units. It helps to protect against contaminants often associated with construction sites.



Cleaning

Grundreiniger

Used for the routine surface cleaning of all types of natural stone and concrete pavements. Ideal for general or intensive spot cleaning. pH neutral and solvent free.



Extra KT

Removes deep and stubborn oil stains from all types of pavement surfaces.



Onex Power

A powerful alkaline surface cleaner that removes, kills and prevents growth of moss, weeds, etc.



RCI Rust Remover

Removes rust stains from a variety of natural stone including granite and some sandstone.



Cement Stain Remover

Removes cement stains from natural stone surfaces. Suitable for most types of granite and acid-resistant natural stone and man-made paving and flooring elements such as ceramic tiles and terracotta.



Please contact our technical support team to check on product compatibility before purchasing.



Technical Advice, Sales and Support

In preparation for construction, we will brief contractors and layworkers on specific mixing, laying requirements, techniques, tips and tricks, tools and equipment and logistical issues. Our advice will help save time and money on site. During construction we can provide on-site assistance and layworker training specific to the unique requirements of your project.

We offer this valuable technical support free, because Steintec are as keen as you are to be associated with successful professional projects. Contact us at the earliest possible stage of your project and our experienced technical team will be delighted to assist you in any way we can.

Telephone: 0203 598 9800 Email: mail@steintec.co.uk



Ing. Steven Burton
B.Eng (Hons), GMICE

Technical Director

07748 652 206
steven.burton@steintec.co.uk



Darius Broga
B.Eng (Hons)

**Specification and
Technical Manager**

07919 051 247
darius.broga@steintec.co.uk



Peter Turner

**Sales and Marketing
Director**

07919 051 246
peter.turner@steintec.co.uk



Phil Crichton
BA (Hons), DipLA, CMLI

**Specification and Technical
Consultant (UK North)**

07748 900 704
phil.crichton@steintec.co.uk



Troi Boorman

Technical Coordinator

07919 051 243
troi.boorman@steintec.co.uk

CPD Sessions

At the conceptual and design stage we can provide qualified architectural and engineering professionals to assist. This is backed up by our certified CPD seminar programme which provides an overview of key design and construction considerations.

- **Modular Pavements. Design and Specification Essentials CPD**
- **SuDs and Permeable Pavements CPD**
- **Modern Problems and Solutions CPD**

NBS Clauses

NBS clauses for steintec products are available at
www.steintec.co.uk/technical/nbs-clauses/

Affiliations





Bicester Village, Bicester

Steintec[®]
high performance paving mortars

1 Northwick Road
Canvey Island
Essex
SS8 0PU
UK

Email: mail@steintec.co.uk

Web: www.steintec.co.uk

Phone: 0203 598 9800

Your ***Steintec***[®] Stockist is

Steintec is a trading brand of tuffbau ltd.
Registered in England No. 4376956 - Registered Office: 1 Northwick Road, Canvey Island, Essex, SS8 0PU, UK