



WORLD TRADE DISPLAY

TOUCH MONITOR
OPEN FRAME
TOUCH SCREEN
ALL IN ONE
FLOOR STANDING
ADVERTISING PLAYER
SELF-SERVICE KIOSK
TOUCH TABLE
VIDEO WALL

CATALOGUE

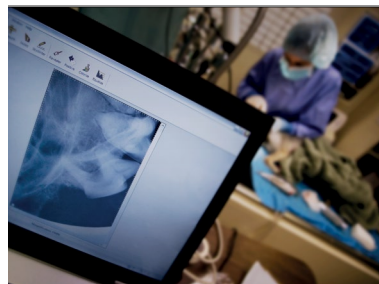




WORLD TRADE DISPLAY

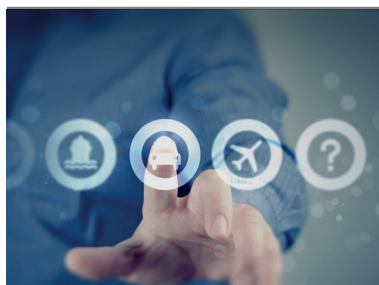
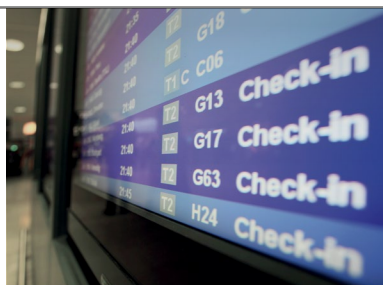


EDUCATION & TRAINING



HEALTHCARE

INTERACTIVE DIGITAL SIGNAGE

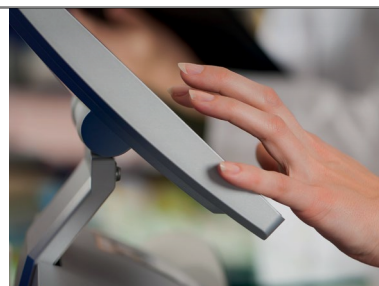


RAIL



FINANCE & BANKING

RETAIL HOSPITALITY



INDUSTRIAL



GAMING AMUSEMENT



Company

World Trade Display is a company specialized in producing and direct selling of interactive touch & digital information signage solutions, at high communicative and emotional-impact.

Thanks to its sales forces consolidated over the years and to its highly qualified service assistance we are able to cover the needs of over 23 countries around the world. The commercial offer is wide and varied, and having the entire range be its own design and construction, are able to meet custom solutions for any type of product such as: Touch Monitor, Open Frame, Touch Screen; Floor Standing Touch; Advertising Player, Touch Table, Self-Service Kiosk e Video Wall.

World Trade Display is a major player in the field of display & digital signage devoted primarily to the world of kiosk information and gaming/entertainment, however their international position for many years has also been consolidated in other industrial sectors such as: Vending, Medical Educational, Ticketing, Transportation, Finance & Banking.

With a wide range of products and new interactive technologies and above all consistency in its line of products, World Trade Display meets and responds to the constant requests for new informative and interactive solutions.

Particular attention has been dedicated to the world of large display screens starting from the large screens to the video-wall, increasingly demanded by the different and multiple applications of use throughout the world.

In fact the company, as with these types of solutions, has always invested in new market segments with efficiency and punctuality, in order to achieve more international leadership.

With its own specific organization for technical support, World Trade Display guarantees accurate technical support “door to door” to better meet all the needs of its international clientele. For sure, one of our main priorities is recruiting and training talented people, and at the same time, focus on human resources and technologies to enhance today, what tomorrow will offer.



World Trade Display is a company specialized in producing and direct selling of interactive touch displays and digital signage solutions, branded WTD.

The highly qualified service assistance it's able to cover the needs of over 23 countries around the world.



History

Founded in 1993 in Rimini, Riccardo Taccardi is the founder and executive manager of the present day World Trade Display©. He is an expert in telecommunications and training in “Industrial Communication”. Only 29 years, WTD today is an international leader in the design and production with its own brand in the market of touch monitor & IDS (Interactive Digital Signage) solutions.

In 1993, the “start-up” year, the company’s’ core business was purely focused in world consumer information technology, more precisely, basic components for the assembly of personal computers, with a wide range of choices which covered the entire production of the personal.

The new digital technologies from 1997 and onwards, have given a strong boost in the different fields of application, especially to an increasing demand in more ‘articulate and interactive screens’ that are even larger.

In fact from 1997 and onwards, the company diverted all its experience into an exclusive sector of displays, for a precise reason made by the current president. In fact, this allowed us to penetrate internationally and become a sole player of its kind, as well as accommodate a ‘broader commercial audience, both in design and marketing using WTD brand products .

This integration exclusively took place in the digital signage industry by World Trade Display starting from 2007. It has led our company within a few years to offer a whole range of products with different technological solutions. The interactive display together with the most ‘advanced IDS solutions are now an integral part of our common life and the sector continues to seize the unlimited possibilities’ that lie ahead for the future.

Mission

The ability to bring high interactivity even in those areas in close contact with the public, is part our mission, to bring closer together the user at a faster speed of communication amongst the different figures in the context of everyday life.

More interactivity, on the flip-side allows for more savings in time and money, especially in such fields as administration, very sensitive to the costs due to bureaucracy, to bring closer the consumer towards a more interactive future even in normal daily life.

World Trade Display, continues to sell even today tens of thousands of displays and informative floor standing with its own official brand registered WTD, in multiple and diverse sectors throughout the world, confirming its identity as a reference point in the sector of industrial information.

The freedom of being able to design, produce and market our own interactive solution, whether a simple display or an interactive kiosk, offers our customers numerous combinations of differentiated solutions in format, size and technology, contributing a secure response to the strong increase in recent years on these types of interactive products.



The freedom of being able to design, produce and market our own interactive solutions.

Special ability to penetrate into international markets, to develop a new kind of work synergy.



TOUCH MONITOR

SAW SURFACE ACOUSTIC WAVE
I-SAW ZERO BEZEL
I.R. INFRARED
PCAP PROJECTED CAPACITIVE



OPEN FRAME

INDUSTRIAL OPEN FRAME
REAR OPEN FRAME
REAR MOUNT
MONITOR OPEN FRAME



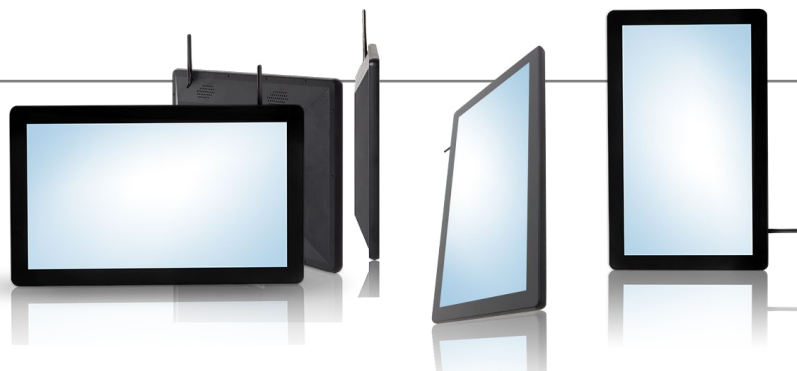
TOUCH SCREEN

SAW SURFACE ACOUSTIC WAVE
I-SAW ZERO BEZEL
I.R. INFRARED
PCAP PROJECTED CAPACITIVE



ALL IN ONE

CASH DESKTOP POINT
GAMBLING TOTEM
INTERACTIVE PC POINT
EDUCATION





FLOOR STANDING & ADVERTISING PLAYER

WALL MOUNTED
ADVERTISING PLAYER
FLOOR STANDING
DOUBLE DISPLAY SOLUTION

SELF-SERVICE KIOSK

TOTEM
TICKETING
GAMING
FINANCE & BANKING



INTERACTIVE TOUCH TABLE

I.R. INFRARED
PCAP PROJECTED CAPACITIVE
INTERACTIVE DIGITAL SIGNAGE
RETAIL & MUSEUM
HEALTH MEDICAL

VIDEO WALL

INDUSTRIAL VIDEO WALL
RAIL INFORMATION
STATION VIDEO MATRIX
TRANSPORTATION SERVICES
HOSPITALITY



FOR REFERENCES AND TECHNICAL SPECIFICATIONS
ABOUT OUR PRODUCTS PLEASE VISIT:
WORLDTRADEDISPLAY.COM

WORLD TRADE DISPLAY Srl

Via della Lontra, 43 - 47923 Rimini - Italy
Tel. +39 0541 753344 - Fax +39 0541 753338
VAT Code and Tax Number: 03910310402
Economic Administrative Index Number: 316170

Web: worldtradedisplay.com
Admin: admin@worldtradedisplay.com
Sales: marketing@worldtradedisplay.com
Support: support@worldtradedisplay.com

All product names, logos, and brands are property of their respective owners.
All company, product and service names used in this brochure are for identification purposes only.
Use of these names, logos, and brands does not imply endorsement.
The Company reserves the right to change these terms and conditions at any time without prior notice.

Last Update 2016 April

A Company Certified **ISO9001**

Copyright © 2016 by World Trade Display Srl

wtd

WORLD TRADE DISPLAY



WORLD TRADE DISPLAY

WORLD TRADE DISPLAY Srl

Via della Lontra, 43
47923 Rimini
Italy

Tel +39 0541 753344
Fax +39 0541 753338

www.worldtradedisplay.com
marketing@worldtradedisplay.com



CERTIFICATO
N° 987 ISO 9001

