



# THE AQUACUT GROUP



The Association of  
**Professional  
Landscapers**



Liberate your imagination. Create stunning  
and functional building finishes with  
Aquacut.

# ABOUT AQUACUT GROUP

Aquacut has decades of experience shaping and finishing porcelain, stone, and metals to create individually designed, functional and aesthetically pleasing finishes. The company has an envious reputation for deliverability and quality. Centred in Cheshire, Aquacut's bespoke finishes are installed in the premises of many well-known entities around the world, including in the UK.

St Paul's Cathedral  
Blackpool Council  
Ipswich City Council  
Manchester Airport  
Heathrow Airport  
Harrods

River Island  
McLaren Motors  
Leeds / Bradford Airport  
Old Trafford  
Dr Martens  
Costa Coffee

Nissan  
Seat  
Ford  
Bentley  
Land Rover  
Southampton Council

Gatwick Airport  
Selfridges  
Nandos  
Bridlington Council  
Mercedes  
East Midlands Airport

Aquacut Limited was established in the 1990's and our artisans quickly established a reputation for first class services to the landscape, tiling and building sectors.

We have three websites:

[www.aquacut.co.uk](http://www.aquacut.co.uk) | [www.tilerstools.co.uk](http://www.tilerstools.co.uk) | [www.babilonia.co.uk](http://www.babilonia.co.uk)

Feel free to browse these, call us on **01565 750666** (Aquacut and Babilonia) or **01565 344860** (Tilers Tools), or drop into Appleton for a visit, you'll be made most welcome. Aquacut and Tilers Tools are members of The Tile Association, The Association of Professional Landscapers, and the Horticultural Trades Association.

The Association of Professional Landscapers awarded Aquacut and Tilers Tools their Service Provider and Manufacturer of the Year Award.

# CONTENTS

	Page
WATERJET CUTTING	5
BULLNOSING, EDGE PROFILES & POLISHING	6
STEP & RISER FABRICATION	7
REDUCED SLIP FEATURES	8
LOGOS, CORPORATE IMAGES & MOTIFS	11
SWIMMING POOLS	12
FURNITURE CLADDING & VANITY UNITS	13
ETCHING & PAINTING	14
LANDSCAPE / HARDSCAPE FEATURES	15
TEMPLATING AND SURVEYING	16
MOSAICS	17
BRICK SETS & AIR BRICKS	18
MECHANICAL FIXINGS	19
LIQUID METAL	20
TILERS TOOLS DIVISION	22
BABILONIA DIVISION	23



## WATERJET CUTTING

Back in the 90's, Aquacut pioneered the use of waterjet cutting to serve the building sector, hence the Aquacut name.

The company quickly gained a first-rate reputation for our professionalism and quality of work.

In the following years, our artisans developed their skills to enable the company to offer a unique range of services, enabling us to be commissioned to undertake complex fabrication works, incorporating a range of specialist services to create functional and attractive building finishes. However waterjet cutting remains at the heart of what we do.

All of our projects are bespoke. Around 90% of what we cut are porcelain tiles and stone and the rest a mixture of metal, glass, plastics, and composites to create millimetre-perfect results time after time.

Waterjet cutting starts with us receiving details of what the client requires. These specifications may be provided on the back of an envelope or in a comprehensive computer drawing. Our design experts then translate these designs into sophisticated computerised drawings which our CNC machines can understand. Our waterjet cutting works to tolerances of  $\pm 0.5\text{mm}$ .





## BULLNOSING, EDGE PROFILES & POLISHING

A bullnosed edge can really lift the attraction of a project to a stunning finish.



Over the years, our artisans have developed a range of techniques for creating bullnose profiles using sophisticated industrial machinery as well as being experts working with hand-held tools to bullnose challenging shapes, such as for curved Roman ends to swimming pools. We offer a wide range of edge shapes. Whether you need to create a unique finish to just a few pieces of marble, or bullnose hundreds of step edges, Aquacut can meet most needs. Bullnosed edges are most often seen in step treads, swimming pool edges, skirting tiles, vanity units, furniture edges, and windowsills. Explore the wide range of bullnose profiles offered by Aquacut. We can profile sweeping curves as well as straight edges.



Full bullnose



Eased profile



Micro bevel



45 degree mitre



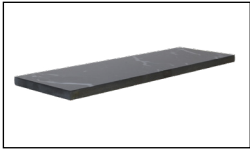
Half bullnose



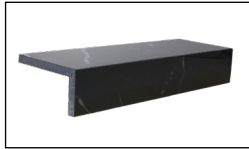
Small pencil round

## STEP & RISER FABRICATION

We offer a range of different step designs, the most popular being:



Simple step



Step with a riser



A simple step with a return



A simple riser, return and box bonded



A riser with two strengtheners

Aquacut has fabricated thousands of steps. These go into retail, commercial, and domestic properties. The fabrication process often incorporates a number of the services Aquacut provides, such as:

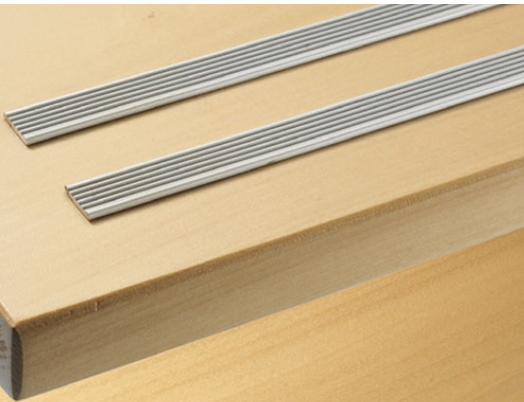
- Templating for those tricky step designs, such as spiral staircases.
- Cutting using our CNC controlled waterjet cutting to give precise results.
- Bullnosing the step edges to give an appealing finish and avoid hard edges to minimise accidents.
- Mitring steps and risers and bonding the two pieces together to create a 3D shape.
- Offering seven different anti-slip techniques for steps.
- Providing strips with special resins to create better visibility for those with impaired vision.

## REDUCED SLIP FEATURES



Aquacut offers a range of seven different anti-slip techniques to meet the most challenging designs. These are most often specified in commercial and retail staircases and ramps but may also be desired when polished tiles or marble is used in domestic settings.

The two most popular anti-slip techniques are bonding square metal bar into pre-cut grooves and applying a special long-lasting resin in etched grooves.





The following techniques are listed in order of popularity.

1. Bonding square metal bar into grooves we cut in the surface of the tiles.  
The metal bar sits around 1mm proud of the tile surface and is usually three parallel lines of metal. While stainless steel is the most specified, we also offer brass and bronze.
2. Use of specialist resins. We first etch shallow grooves (usually straight and parallel, but we could do wavy shapes if desired) which are then filled with the specialist long-lasting resin to stand around 1mm proud of the surface.  
We offer resins in a range of colours but the most common is black.
3. Parallel grooves cut into the leading edge of the tiles.
4. Grooves etched and then painted to create highly visible edges, particularly valued as an aid for the visually impaired.
5. We can etch a band across the leading edge of the tile to create a textured finish which affords greater traction than a polished surface.
6. Metal strips with inserted long-lasting, textured synthetic rubber surface.
7. Tactile steel or brass studs (like upside down mushrooms) are fixed into the surface of the tile (not often specified).



## Aquacut offers seven different options for anti-slip

Stainless steel tactile studs with unseen stems which are bonded into holes drilled, by Aquacut. Very attractive finish, but not often asked for.

Three 3mm grooves cut and square metal bar bonded. The bar stands around 1mm proud as an attractive and effective anti-slip feature. Finish usually in stainless steel or brass.

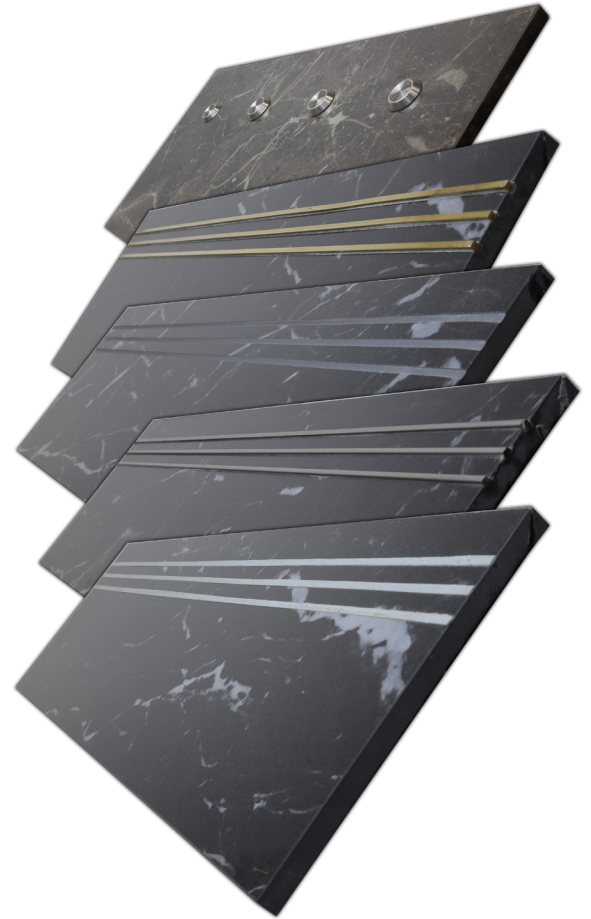
Grooves cut and then painted, often with good colour contrast which aids the visually impaired as well as affording anti-slip properties.

Etch a wide groove into the surface of the tile (circa 1mm deep). Creates a rougher 'trench' which aids grip. (Not shown)

Simple grooves cut into the material. If we do this while we bullnose the edge, the cost is less for the client. (Not shown)

This process uses K-Grip, a resin specially formulated for anti-slip steps. The long-lasting resin is widely specified and is offered in a range of colours.

[A few options can be found opposite but please call us on 01565 750666 to discuss our full range and your requirements.](#)



## LOGOS, CORPORATE IMAGES & MOTIFS

Clients using this service are looking to get noticed, setting the desired tone when people enter their building.

We use our unique range of skills to create:

- Bespoke logos or motifs.
- Entrance mats made from tiles or stone.
- Corporate imaging, such as entrance halls.
- Signage.

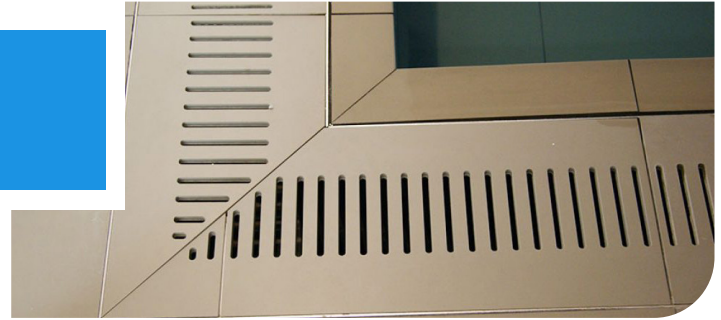
Our designers are experts at helping clients achieve attractive and cost-effective signage. This really is the case of what we can do is limited by your imagination.



## SWIMMING POOLS

Aquacut works with a fair number of swimming pool installers. Our services most valued include:

- Templating the swimming pool and advising on how to tile the surround.
- Waterjet cutting tiles to create a snug fit around the pool.
- Bullnosing the pool tiles at the edges of the pool to make sure they are tactile.
- Creating pool grates for drainage offering a variety of techniques and designs.
- Manufacturing the step cladding, perhaps incorporating anti-slip techniques.
- Fabricate fun shapes or logos out of the pool tiles to create points of interest.
- Cladding hard furniture such as chairs, recliners and tables.

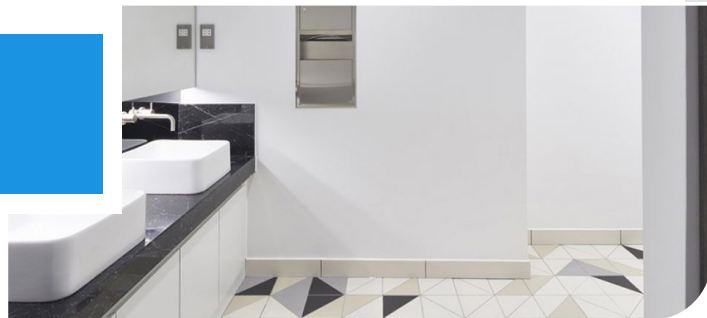




## FURNITURE CLADDING & VANITY UNITS

Wish to create eye-catching and unique furniture in the home or office, then you've come to the right place.

The full range of services Aquacut offers makes the company uniquely placed to make that extra special piece of furniture you are looking for. Furniture cladding can use a number of our services to create that WOW! appeal. We can clad furniture for internal and external areas. Using client's materials, we ensure the pieces fit with the whole installation theme. No wonder our services are in such high demand by discerning professional designers.



Cladding enables creative designers to liberate their imagination by combining different materials such as metals in tiles or stone, etching and painting to create stand-out pieces.



## ETCHING & PAINTING

At Aquacut, we have different technologies to enable us to etch and paint a variety of materials. We can etch stone, porcelain, ceramics, glazed materials, concrete, metals, plastics, and glass. By combining materials, designers, artists and architects have been able to create really imaginative and stunning pieces of work as well as highly effective signage, images and logos. Etching on its own works best with dark material to give a stronger contrast, however, designers have valued the subtlety an etched design in lighter material can show, with the design becoming more or less visible as the viewer moves over the face of the material. Aquacut also offers specialist paints which were developed for exterior and interior applications. Paints with specific RAL colours can be mixed and when combined with an etched surface may increase the design's visibility and impact.



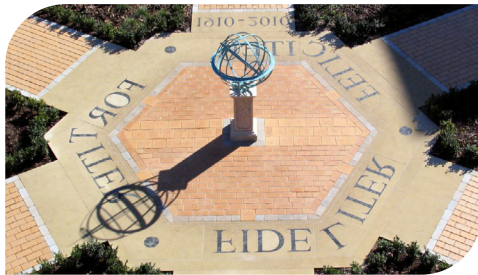
Our technology is in demand to create signs, logos, works of art, entrance mats and directional pointers.



## LANDSCAPE / HARDSCAPE FEATURES

Aquacut has many years of processing stone and concrete materials for landscape professionals but, the increasing demand to use 20mm thick porcelain in landscape environments has seen us working closely with our clients to create stunning and functional finishes.

The commissions we have completed for large public works usually combines a few of our services such as templating, waterjet cutting, bullnosing, etching, painting and epoxy bonding.



## TEMPLATING & SURVEYING

Our templating service, if required, is usually at the fit-out stage. With years of experience templating some really challenging areas, our experts have developed a range of techniques to make sure the results are accurate and delivered timeously.

- Our state-of-the-art computerised laser systems uses a number of pinpoint accurate lasers to create a precise and swift method of templating in even the largest and most complex of projects. Often used for templating swimming pools, terraces/patios as well as internal steps and other floor areas.
- We also offer our traditional service. This is achieved by using hard sheets to cut precise templates. Either the client can arrange their trade person to send us templates or we can attend site and create these. This can be particularly useful for small areas.

Depending on the complexity of the templated area and the method used to template, once we program the templates into our CNC language, we often cut plywood tests and can take these to site as a final check before cutting the client's materials. To ensure the best results, it's important that the area to be templated is complete to the fitting out stage. With Aquacut's considerable experience, we work closely with designers and fitters to make the process as trouble free as possible.



## MOSAICS

---

Creating bespoke mosaics may be expensive, but the end results can be stunning.

Our expertise enables us to create wonderful designs by either cutting special mosaic shapes from marble or tile, or from cutting existing mosaic sheets to accept designs of a contrasting finish.

We also offer a very specialised service to cut mosaics from clients' materials and often then fit them onto a mesh or film for ease of installation. For those aiming for a very high-quality, individual look, the effects can be very appealing.





## BRICK SETS & AIR BRICKS

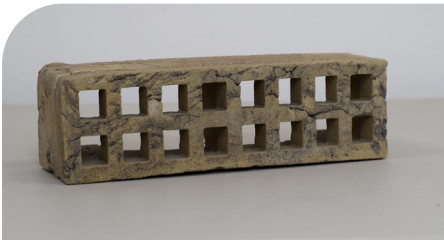
Recommended by brick manufacturers and pre-cast concrete companies, Aquacut offers a range of techniques to manufacture air bricks and brick sets.



Some brick manufacturers don't offer air bricks, so that's where we come in. We can fabricate:

- Air bricks cut from the same bricks being used in the building, so offering continuity.
- Air bricks cut with slots or holes as required.
- Brick sets cut, mitred, and bonded to exacting angles for inserting into pre-cast concrete walls.

We also offer the service of cutting the face off standard bricks to create brick slips to precise measurements.





## MECHANICAL FIXINGS

There may be a legal requirement to secondary fix tiles and stone at height for safety reasons. Increasingly, designers specify secondary fixings on installations at lower heights than regulation demands. Aquacut's secondary fixing system is widely used and is offered in grade 304 and 316 versions of stainless steel.

Mechanical fixings are required by law for tile and stone installations above three meters in height. These are secondary fixings in addition to the usual adhesive fixing. Many designers and installers will use mechanical fixings for any wall installations as a matter of course to add to safety.



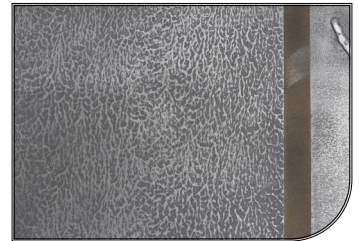
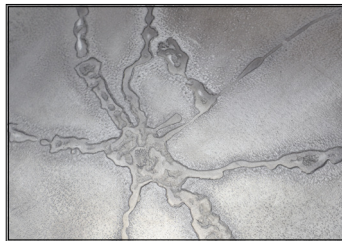
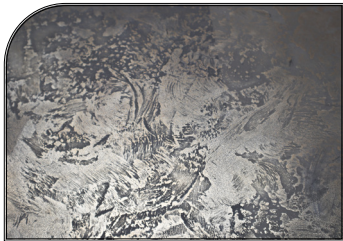
Secondary mechanical fixings from Aquacut are widely specified by architects and designers. We offer them in grade 304 and 316 stainless steel. The fixing methods are fairly simple to understand.

## LIQUID METAL

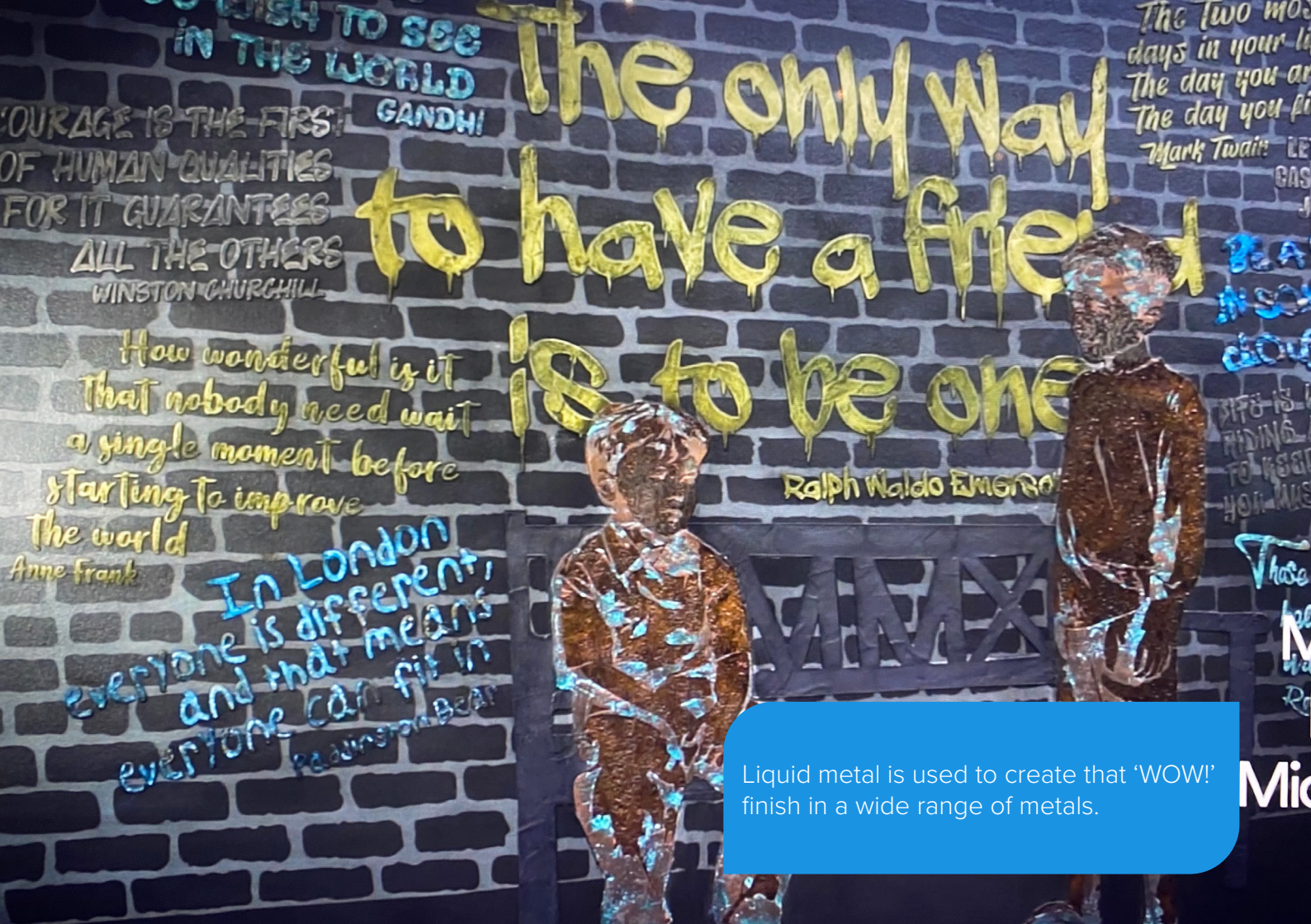
Aquacut offers a range of services linked to liquid metal.

1. Creating templates for clients' own tradesmen to use.
2. Applying liquid metal to clients' materials.
3. Supplying the liquid metal components to clients.
4. Training for craftsmen seeking to develop their skills.

Liquid metal uses a mix of fine powdered metal mixed with specialist resins to create stunning surface finishes. We offer a wide range of metals and the finishes can be textured or polished up to a fine mirror polish. Favoured by particularly creative designers to add that real 'WOW!' finish to their projects. Liquid metal may be used in internal and external areas.







TO WISH TO SEE  
IN THE WORLD  
GANDHI  
COURAGE IS THE FIRST  
OF HUMAN QUALITIES  
FOR IT GUARANTEES  
ALL THE OTHERS  
WINSTON CHURCHILL

The only way  
to have a friend  
is to be one  
Ralph Waldo Emerson

How wonderful is it  
that nobody need wait  
a single moment before  
starting to improve  
the world  
Anne Frank

In London  
everyone is different,  
and that means  
everyone can fit in  
Paddy's Pub

The two most  
days in your life  
The day you are born  
The day you die  
Mark Twain

BE A  
NICE  
GUY  
LIFE IS  
HIDING  
TO KEEP  
YOU MIS  
These  
M  
Re

Liquid metal is used to create that 'WOW!'  
finish in a wide range of metals.

Mic

## TILERS TOOLS

Tilers Tools is part of the Aquacut Group and was established to serve professional tiling, landscaping, and building professionals throughout the UK and Ireland. Tilers Tools is the official Raimondi UK distributor, selling and delivering a wide range of equipment, tools, adhesives, and consumables.

Our brands include FUGA-PAVE a complete installation system for the landscape professionals, TT Paving Solutions for maintaining landscaped hard surfaces and CLFM which is our range of specialist diamond blades and tools. Full details are on our [www.tilerstools.co.uk](http://www.tilerstools.co.uk) website. We also have a very active Facebook page; [LPG Landscape Paving Group](#) with hundreds of landscape professionals sharing their projects, experiences and helping solve queries.

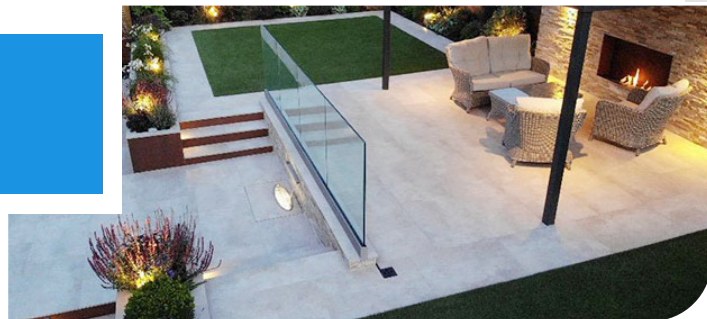




## BABILONIA DIVISION

Babilonia division has been created to offer highest quality products for outdoor living. These incorporate Aquacut's fabrication excellence to create individual items that will WOW your friends and family. We also work with a very select number of partners to round out our offer, so enables us to provide products in the following areas:

- Balustrades
- Pagodas
- Outdoor kitchen
- Outdoor seating
- Planters
- Lighting
- BBQ
- Fire pits
- Entertainment walls and panels
- Feature walls
- Signage





## CONTACT US

Unit 4A Stretton Distribution Centre  
Off Grappenhall Lane  
Appleton  
Warrington  
WA4 4QT

### AQUACUT LIMITED

01565 750666  
sales@aquacut.co.uk  
[www.aquacut.co.uk](http://www.aquacut.co.uk)

### TILERS TOOLS

01565 344860  
sales@tilerstools.co.uk  
[www.tilerstools.co.uk](http://www.tilerstools.co.uk)



## MEMBERS OF THE FOLLOWING ORGANISATIONS

