

Broken Vessels

(Amazing Grace)

JOEL HOUSTON and JONAS MYRIN

♩ = 71 *Worshipfully**p* *light time*
*Elec. line***INTRO**

Em G Em 1 G 2 G *p-mp*

1. All these
(2. You take our)

VERSE 1, 2

Em G Em G

6 piec - es bro - ken and scat - tered, in mer - cy gath - ered, mend - ed and whole. Emp - ty
fail - ure, You take our weak - ness. You set Your trea - sure in jars of clay. So take this

10 hand - ed, but not for - sak - en. I've been set free, I've been set free. A -
heart, Lord, I'll be Your ves - sel. The world to see Your life in me.

PRE-CHORUS*mp* *Bass - 16ths*

C D Em C

14 maz - ing grace! how sweet the sound That saved a wretch like me! Oh, I

18 once was lost but now I am found, Was blind, but now I see. Oh, I can see You

CHORUS*Bass & Drums out*

G D Em C

22 now, oh, I can see the love in Your eyes. Lay - ing Your-self

26 down, rais - ing up the bro - ken to life.

TURN

Band in Bass - 16ths

Em G Em G *mp*

30 2 C

2. You take our

INSTR. 1

1st X - Add Bass build each time *mp-mf*

G D Em

35 Elec. 1-5 C 6 C *f*

A-

PRE-CHORUS

G D Em

40 maz - ing grace! how sweet the sound That saved a wretch like me!

C G D

43 Oh, I once was lost but now I am found, Was

Em

46 blind, but now I see. Oh, I can see You

1 C 2 C

CHORUS

mp diamond feel Bass & Drums out

G D Em C

49 now, oh, I can see the love in Your eyes. Lay-ing Your-self

G D Em C

53 down, rais-ing up the bro - ken to life.

INSTR. 2

mp-mf build each time 3rd X - Full Band

G D Em

57 1-3 C 4 C *mf-f*

A-

Broken Vessels (Amazing Grace) - Lead Sheet - 3 of 3

KEY: G

PRE-CHORUS

2nd X - Sn. - 16ths

62 **G** **D** **Em**
 maz - ing grace! how sweet the sound That saved a wretch like me!

65 **C** **G** **D**
 Oh, I once was lost but now I am found, Was

68 **Em** **1 C** **f** **2 C** **ff**
 blind, but now I see. A - Oh, I can see You

CHORUS

Full groove

71 **G** **D** **Em**
 now, oh, I can see the love in Your eyes.

74 **C** **G** **D**
 Lay - ing Your - self down, rais - ing up the

77 **Em** **1 C** **2 C**
 bro - ken to life. Oh, I can see You Oh, I can see You

CHORUS

mp diamond feel
 Bass & Drums out

80 **G** **D** **Em** **C**
 now, oh, I can see the love in Your eyes. Lay - ing Your - self

84 **G** **D** **Em** **C** **G**
 down, rais - ing up the bro - ken to life.

Broken Vessels

(Amazing Grace)

JOEL HOUSTON and JONAS MYRIN

♩ = 71 *Worshipfully**p* *light time*
*Elec. line***INTRO**

1. All these
(2. You take our)

p-mp

1 A \flat 2 A \flat

Fm A \flat Fm

VERSE 1, 2

6

Fm A \flat Fm A \flat

piec - es bro - ken and scat - tered, in mer - cy gath - ered, mend - ed and whole. Emp - ty
fail - ure, You take our weak - ness. You set Your trea - sure in jars of clay. So take this

Fm A \flat Eb Fm Eb

10 hand - ed, but not for - sak - en. I've been set free, I've been set free. A -
heart, Lord, I'll be Your ves - sel. The world to see Your life in me.

PRE-CHORUS*mp* *Bass - 16ths*

14

D \flat Eb Fm D \flat

maz - ing grace! how sweet the sound That saved a wretch like me! Oh, I

D \flat Eb Fm D \flat

18 once was lost but now I am found, Was blind, but now I see. Oh, I can see You

lifewayworship.com

PREVIEW - Do Not Print

CHORUS*Bass & Drums out*

22

A \flat Eb Fm D \flat

now, oh, I can see the love in Your eyes. Lay - ing Your-self

A \flat Eb Fm

26 down, rais - ing up the bro - ken to life.

1 D \flat

TURN

Band in
Fm Bass - 16ths A \flat Fm A \flat mp

30

2. You take our

1st X - Add Bass
build each time

INSTR. 1

mp-mf

A \flat E \flat Fm 1-5 D \flat 6 D \flat f

35 Elec. A-

PRE-CHORUS

A \flat E \flat Fm

40 maz - ing grace! how sweet the sound That saved a wretch like me!

D \flat A \flat E \flat

43 Oh, I once was lost but now I am found, Was

Fm 1 D \flat 2 D \flat

46 blind, but now see. Oh, I can see You

CHORUS

mp diamond feel
Bass & Drums out

A \flat E \flat Fm D \flat

49 now, oh, I can see the love in Your eyes. Lay-ing Your-self

A \flat E \flat Fm D \flat

53 down, rais-ing up the bro - ken to life.

INSTR. 2

mp-mf build each time
3rd X - Full Band

A \flat E \flat Fm 1-3 D \flat 4 D \flat mf-f

57 A-

Broken Vessels (Amazing Grace) - Lead Sheet - 3 of 3

KEY: A \flat

PRE-CHORUS

2nd X - Sn. - 16ths

62 $A\flat$ $E\flat$ Fm
 maz - ing grace! how sweet the sound That saved a wretch like me!

65 $D\flat$ $A\flat$ $E\flat$
 Oh, I once was lost but now I am found, Was

68 Fm $D\flat$ f $D\flat$ ff
 blind, but now I see. A - Oh, I can see You

CHORUS

Full groove

71 $A\flat$ $E\flat$ Fm
 now, oh, I can see the love in Your eyes.

74 $D\flat$ $A\flat$ $E\flat$
 Lay - ing Your self down, rais - ing up the

77 Fm $D\flat$ $D\flat$
 bro - ken to life. Oh, I can see You Oh, I can see You

CHORUS

mp diamond feel
 Bass & Drums out

80 $A\flat$ $E\flat$ Fm $D\flat$
 now, oh, I can see the love in Your eyes. Lay - ing Your - self

84 $A\flat$ $E\flat$ Fm $D\flat$ $A\flat$
 down, rais - ing up the bro - ken to life.

Broken Vessels

(Amazing Grace)

JOEL HOUSTON and JONAS MYRIN

♩ = 71 *Worshipfully**p* *light time*
*Elec. line***INTRO**

Chords: F#m A F#m 1 A 2 A *p-mp*

1. All these
(2. You take our)

VERSE 1, 2

Chords: F#m A F#m A

6 piec - es bro - ken and scat - tered, in mer - cy gath - ered, mend - ed and whole. Emp - ty
fail - ure, You take our weak - ness. You set Your trea - sure in jars of clay. So take this

Chords: F#m A E F#m E

10 hand - ed, but not for - sak - en. I've been set free, I've been set free. A -
heart, Lord, I'll be Your ves - sel. The world to see Your life in me.

PRE-CHORUS*mp* *Bass - 16ths*

Chords: D E F#m D

14 maz - ing grace! how sweet the sound That saved a wretch like me! Oh, I

Chords: D E F#m D

18 once was lost but now I am found, Was blind, but now I see. Oh, I can see You

CHORUS*Bass & Drums out*

Chords: A E F#m D

22 now, oh, I can see the love in Your eyes. Lay - ing Your - self

Chords: A E F#m 1 D

26 down, rais - ing up the bro - ken to life.

TURN

Band in
F#m Bass - 16ths A F#m A *mp*

30 2 D

1st X - Add Bass
build each time

2. You take our

INSTR. 1

mp-mf

A E F#m 1-5 D 6 D *f*

35 Elec. A-

PRE-CHORUS

A E F#m

40 maz - ing grace! how sweet the sound That saved a wretch like me!

D A E

43 Oh, I once was lost but now I am found, Was

F#m 1 D 2 D

46 blind, but now I see. Oh, I can see You

CHORUS

mp diamond feel
Bass & Drums out

A E F#m D

49 now, oh, I can see the love in Your eyes. Lay-ing Your-self

A E F#m D

53 down, rais-ing up the bro - ken to life.

INSTR. 2

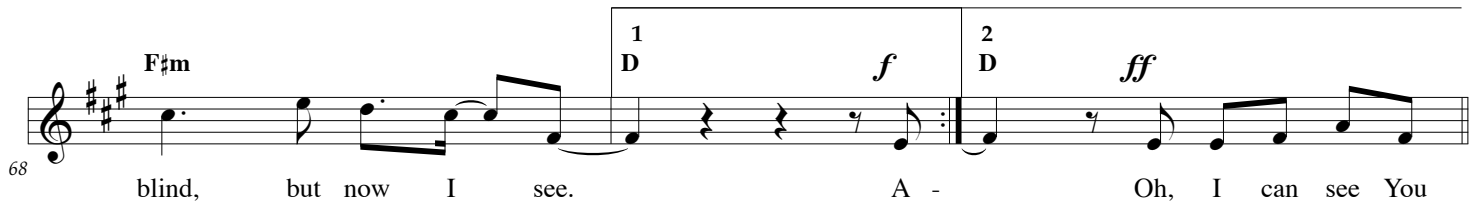
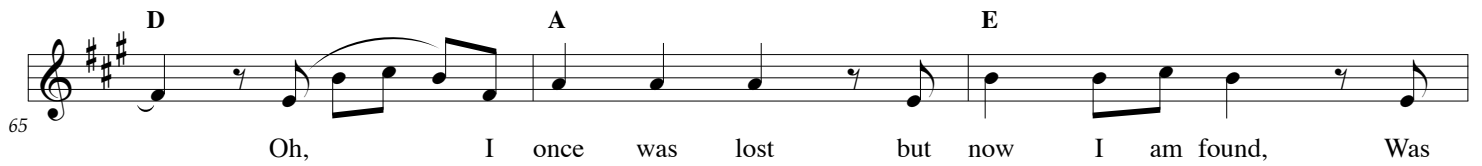
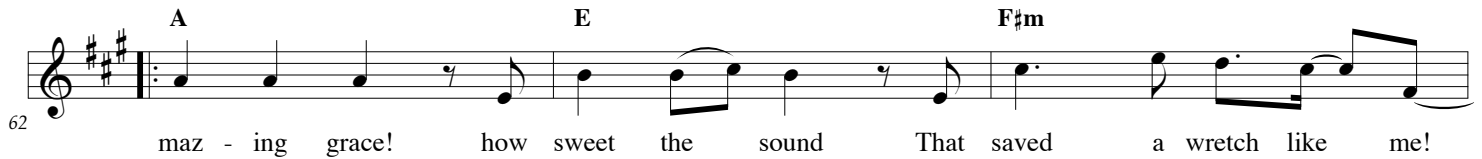
mp-mf build each time
3rd X - Full Band

A E F#m 1-3 D 4 D *mf-f*

57 A-

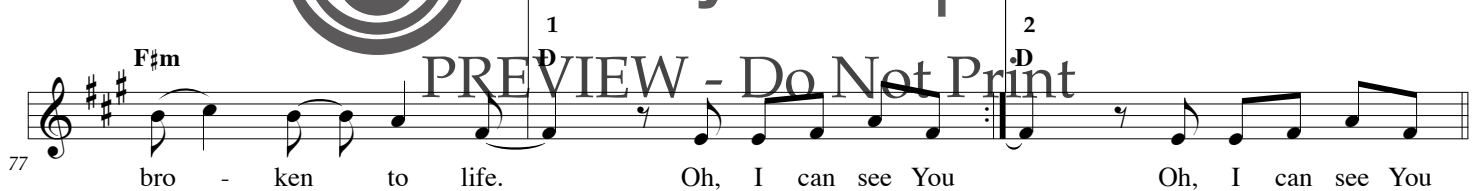
PRE-CHORUS

2nd X - Sn. - 16ths



CHORUS

Full groove



CHORUS

mp diamond feel
Bass & Drums out