

It Came Upon a Midnight Clear

Words by Edmund H. Sears

Music by Richard S. Willis

Arranged and Orchestrated by Robert Nugent

Mournfully

G(no3)

G m

D m

mf

C m7

D m7

E \flat

E \flat
G

F sus4

Fsus $\frac{4}{2}$

F

Fsus $\frac{4}{2}$

F

G m9

E \flat (#4)

MEN: mp

lifewayworship.com

It came up - on a mid - night

Cm7 A^b2

clear, That glo - rious song of old,

Detailed description: This system contains the first two lines of music. The top line is a vocal line in bass clef with lyrics. The bottom two lines are piano accompaniment in bass clef. The key signature has two flats (Bb and Eb). The first measure has a Cm7 chord above it. The second measure has an Ab2 chord above it. The piano accompaniment features a steady eighth-note bass line and chords in the right hand.

A^b A^b(#4) A^b Gm9 E^b(#4)

From an - gels bend - ing near the

Detailed description: This system contains the second two lines of music. The top line is a vocal line in bass clef with lyrics. The bottom two lines are piano accompaniment in bass clef. The key signature has two flats. The first measure has an Ab chord above it. The second measure has an Ab(#4) chord above it. The third measure has an Ab chord above it. The fourth measure has a Gm9 chord above it. The fifth measure has an Eb(#4) chord above it. The piano accompaniment continues with a steady eighth-note bass line and chords in the right hand.

lifewayworship.com

PREVIEW - Do Not Print

earth To touch their harps of gold:

Detailed description: This system contains the third two lines of music. The top line is a vocal line in bass clef with lyrics. The bottom two lines are piano accompaniment in bass clef. The key signature has two flats. The first measure has a Cm7 chord above it. The piano accompaniment features a steady eighth-note bass line and chords in the right hand. A watermark logo for lifewayworship.com is overlaid on the first two lines of music. The text 'PREVIEW - Do Not Print' is overlaid on the vocal line.

WOMEN:
mp

28

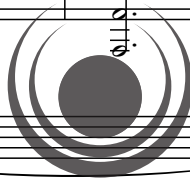
"Peace on the earth, — good will to

28

A 7sus4 D F# G m Gsus4/2

men, From heav'n's — all - gra - cious King": —

G m E A C7sus4 Bb C DbM7



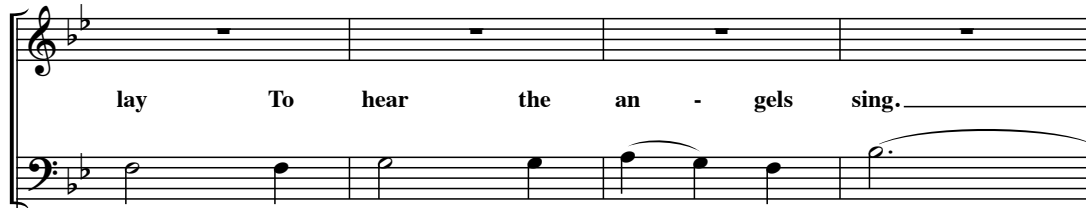
lifewayworship.com

PREVIEW - Do Not Print

The world in sol - emn still - ness

Ebm9 Gb GbM7 Gbm(#11) Bb F F7sus4 Eb D m7

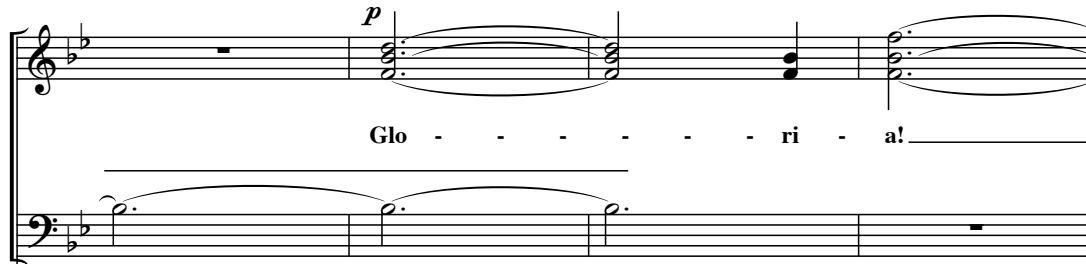
lay To hear the an - gels sing.



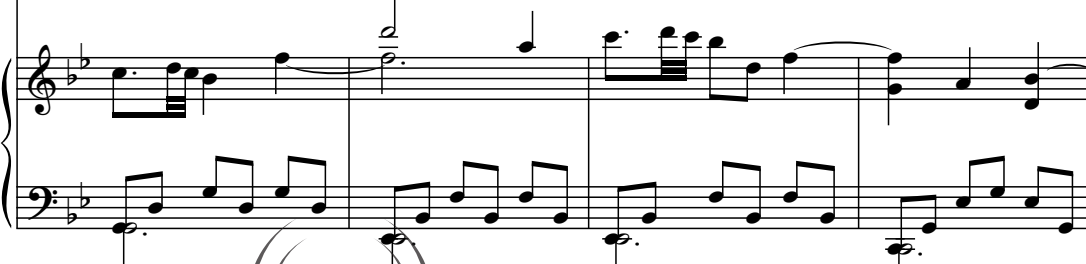
G m7 Cm9 Cm9/Bb F/A G m7



p
Glo - - - - - ri - a!



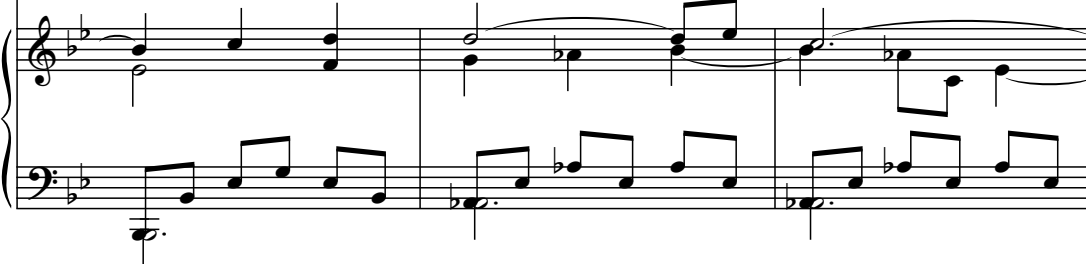
F/G G m7 Eb(#4) Bb/Eb Cm11



 lifewayworship.com
PREVIEW - Do Not Print



Bbsus4 Ab2(no3) Ab



mp 51

And ye, be - neath life's crush - ing
 Life's crush - ing

51 Gm9 Bb Eb

load, load, Whose forms are bend - ing low,

Eb Cm7 Ab2(no3)

lifewayworship.com
 PREVIEW - DO NOT PRINT

Who toll a long the climb ing
 Who toll a

Gm11 F7 Eb

way
long with pain - ful steps and slow,

C m7

D m7

E \flat

f

69

Look now! for

E \flat ₉(#11)

E \flat

E \flat (#4)

C m7

A 7sus4

69

f

glad and gold - en hours Come swift - ly

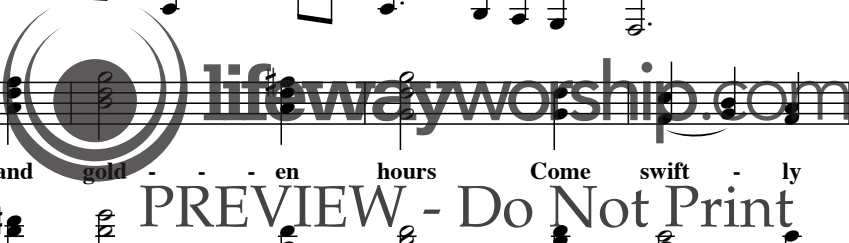
D
F#

G m

Gsus $\frac{4}{2}$

G m

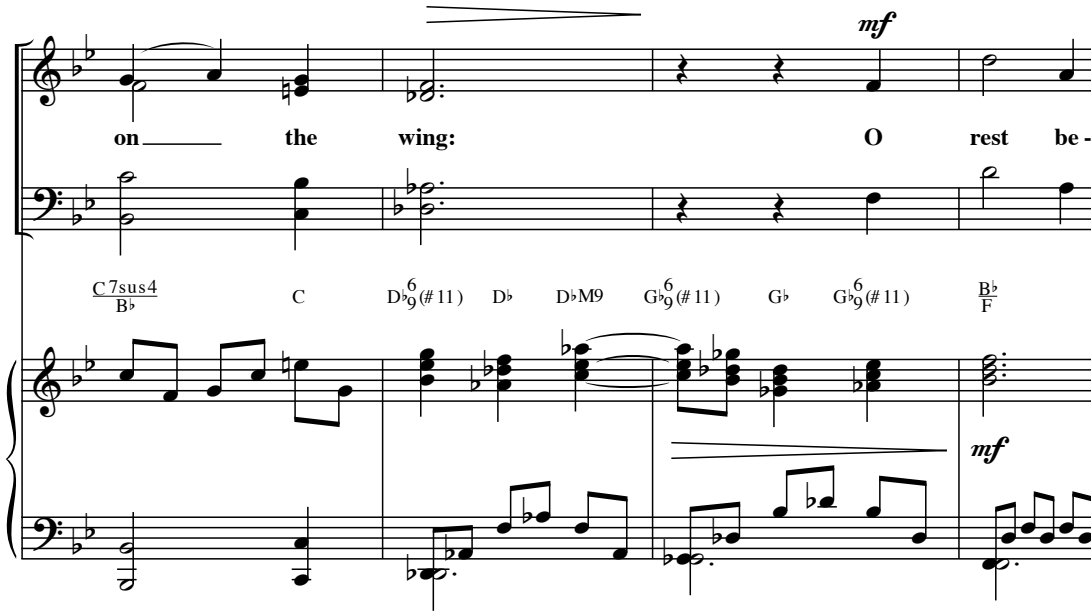
E
A



mf


on the wing: O rest be -

C7sus4 *B^b* C D⁹(#11) D^b D^bM9 G⁶(#11) G^b G⁶(#11) B^b F



neath the wea - ry load. And hear the
wea - ry load,

F7sus4 *E^b* Dm7 Gm7 Cm7



an - gels sing

Dm7 *E^b* *F7* *E^b* *G* *D*

85

f



 lifewayworship.com

PREVIEW - Do Not Print

It Came Upon a Midnight Clear, p.8

C2 A m7

mf

G^bM7 / B C m7 B^bM7 / D G^bM7 / D^b G^bM7 / B^b

mf

A^b7 / G^b A^b / E^b F sus4

f

6

B^bm F m F sus4

f

lifewayworship.com
PREVIEW Do Not Print

E^bm7 F m7 G^b

mf

3 3

N.C.

poco rit.
WOMEN: *mp*

107

A tempo
G m11

For lo, the days — are

poco rit.

E♭M9(♯11)

C m13

has - t'ning on, By proph - et seen — of

old

When, with the ev - er -

MEN: mp

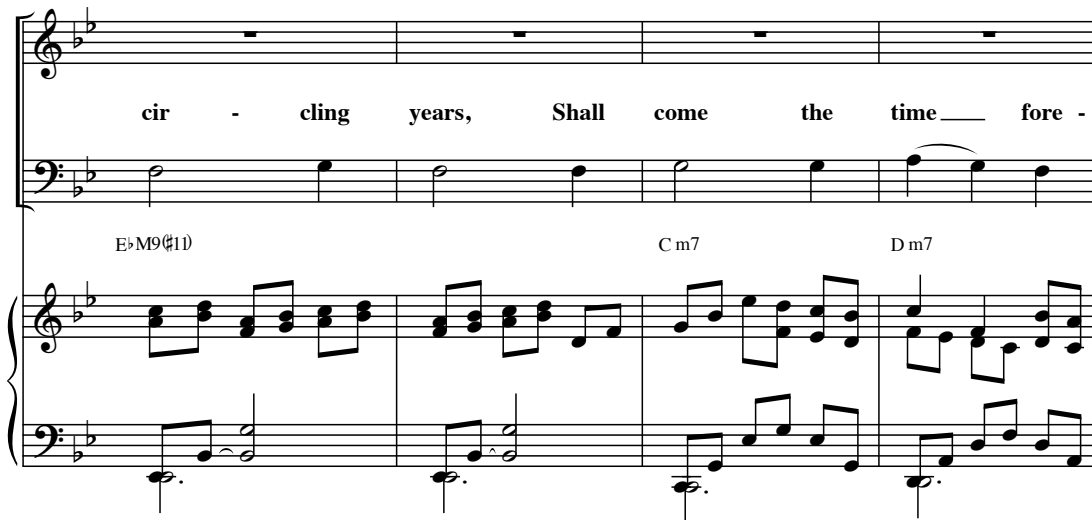
PREVIEW - Do Not Print

A♭⁶

G m11

cir - cling years, Shall come the time fore -

E♭M9(♯11) C m7 D m7



told, When the new

f 123

E♭ D A

123

f



heav'n and earth shall own The

PREVIEW - Do Not Print

Dsus4 D A E♭ G F G B♭ F



Prince of Peace their King.
Prince of Peace their King,

F/A Fsus4/A F/A C7sus4/Bb F/Bb C Dbm7

And the whole world send back the

Dbm7/Gb Ab7sus4/Gb Bb/F F7sus4/Eb Dm7

song Which now the an - - - gels

Gm7 Cm7 Dm7

lifewayworship.com
PREVIEW - Do Not Print

It Came Upon a Midnight Clear, p.12

E♭m7 F sus4 B♭(no3)

sing.

F m E♭m7

F m7 G♭ MEN: f A♭sus4 A♭

Hear the an - - - gels

WOMEN: f

Al - le - lu - ia!

sing!

PREVIEW - Do Not Print

B♭m 3 F m

E^bm7 Fm7 G^b A⁷/_{G^b}

The piano introduction consists of four measures. The right hand features a melodic line with dotted rhythms and eighth notes, while the left hand provides a steady accompaniment of eighth notes. Chords are indicated above the staff: E^bm7, Fm7, G^b, and A⁷/_{G^b}.

CHOIR: f

Glo - ri - a! Glo - ri - a!
Glo - ri - - - a! Glo - ri -

The choir part is marked *f* and spans four measures. It features a vocal line with long notes and a piano accompaniment of chords. The lyrics are: "Glo - ri - a! Glo - ri - a! Glo - ri - - - a! Glo - ri -".

G^b A^b(add4)_{G^b} G^b

The piano accompaniment for the choir section consists of four measures. It features a steady accompaniment of chords in the right hand and eighth notes in the left hand. Chords are indicated above the staff: G^b, A^b(add4)_{G^b}, and G^b.

a!

lifewayworship.com

PREVIEW Do Not Print

The piano accompaniment for the 'a!' section consists of four measures. It features a steady accompaniment of chords in the right hand and eighth notes in the left hand. A large watermark is overlaid on the page.

A^b(add4)_{G^b} B^b(no3)

ff *fff*

The piano accompaniment for the final section consists of four measures. It features a steady accompaniment of chords in the right hand and eighth notes in the left hand. The final measure is marked *fff*. Chords are indicated above the staff: A^b(add4)_{G^b} and B^b(no3).