

How Great Our Joy

Traditional German Carol
New Lyrics by Robert Nugent
Arranged and Orchestrated by Robert Nugent

With celebration

Musical notation for the first system. The piano part is in 4/4 time, starting with a forte (*f*) dynamic. The vocal line begins with a C chord and a melodic phrase. The system concludes with a 2/4 time signature change.

G unis.

N.C.

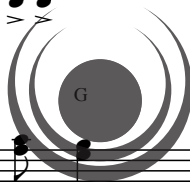
C

MEN:mf

Musical notation for the second system. The piano part features a mezzo-forte (*mf*) dynamic. The vocal line includes the lyrics "How great — our joy, how".

How great — our joy, how

F



lifewayworship.com

PREVIEW - Do Not Print

Musical notation for the third system. The piano part continues with a mezzo-forte (*mf*) dynamic. The vocal line includes the lyrics "great, how great. How great — our joy, how".

great, how great. How great — our joy, how

Tenor Soloist:

12 *mf* greatly relaxed

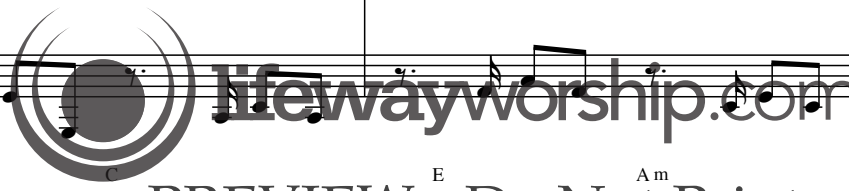
While by the sheep we
hope has come.

hope has come.
Sav - ior has come.

F G C 12

F G C Am C/E
watched at night, Glad tid - ings brought an

F G E Am
an - gel bright. How great our joy!

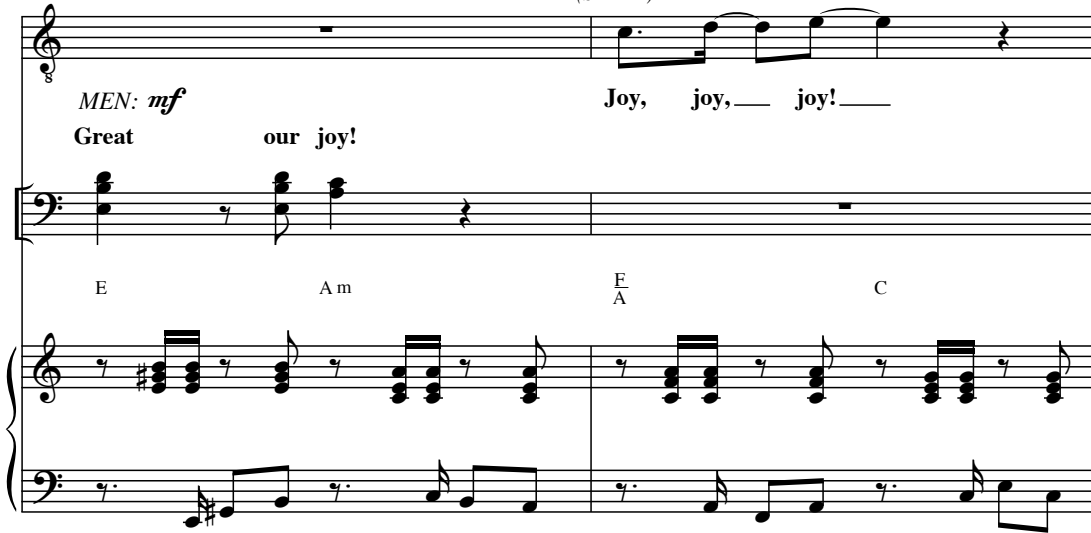


PREVIEW - Do Not Print

(Soloist:)

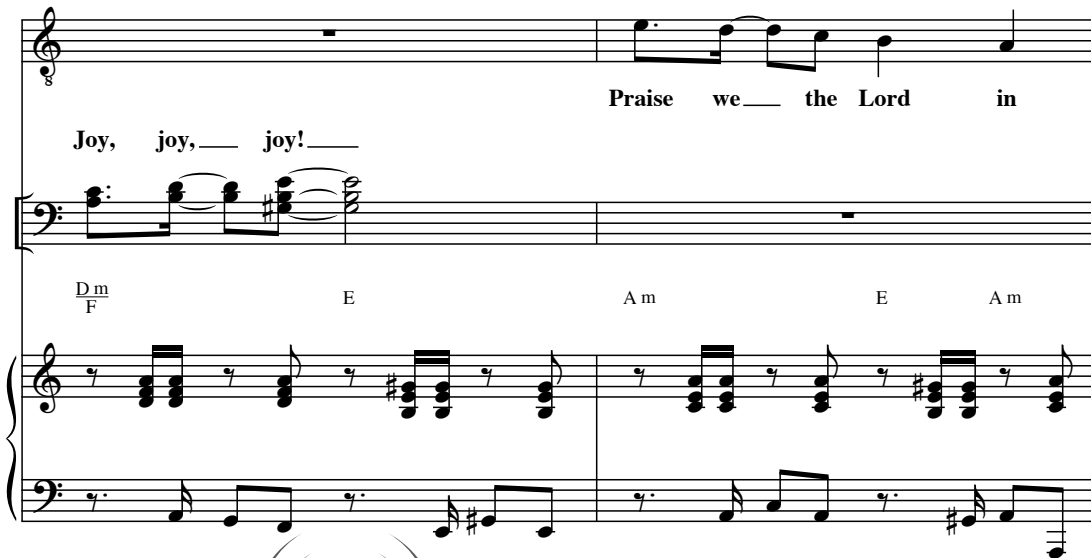
MEN: *mf*
Great our joy! Joy, joy, — joy! —

E Am E A C



Joy, joy, — joy! — Praise we — the Lord in

Dm F E Am E Am



heav'n on — high! Praise — we — the Lord in

Dm E Am E Am



lifewayworship.com
PREVIEW Do Not Print

heav'n on high!

D m E F G

This system contains the first three measures of the piece. It features a vocal line in treble clef with a 2/4 time signature, a bass line in bass clef, and a piano accompaniment in grand staff. The lyrics 'heav'n on high!' are written above the vocal line. Chords D m, E, F, and G are indicated below the bass line.

26 WOMEN:
mf

There shall be born, so he did say,

This system begins at measure 26 with the instruction 'WOMEN:' and a mezzo-forte (*mf*) dynamic. The vocal line continues with the lyrics 'There shall be born, so he did say,'. The piano accompaniment continues with a steady eighth-note bass line and chords.

26 C F G C

This system continues the piano accompaniment from the previous system, starting at measure 26. Chords C, F, G, and C are indicated above the treble staff. A triplet of eighth notes is marked with a '3' in the treble staff.

In Beth - le - hem a Child to - day How

PREVIEW - Do Not Print

This system contains the fourth system of music, starting at measure 26. The vocal line has the lyrics 'In Beth - le - hem a Child to - day How'. A large watermark 'lifewayworship.com' and 'PREVIEW - Do Not Print' is overlaid on the page.

A m C E F G C

This system continues the piano accompaniment from the previous system. Chords A m, C E, F, G, and C are indicated above the treble staff.

great ou joy! Great our joy!
(MEN:)

E Am E Am

This system contains the first two lines of music. The top line is a vocal line in treble clef with lyrics. The bottom line is a piano accompaniment in bass clef. The key signature has one sharp (F#). The first line of music is for the vocal part, and the second line is for the piano accompaniment. The lyrics are "great ou joy! Great our joy!" with "(MEN:)" written below the second line of lyrics. The piano accompaniment consists of chords in the right hand and a simple bass line in the left hand.

Joy, joy, — joy! — Joy, joy, — joy! —

$\frac{E}{A}$ $\frac{C}{G}$ $\frac{Dm}{F}$ E

This system contains the second two lines of music. The top line is a vocal line in treble clef with lyrics. The bottom line is a piano accompaniment in bass clef. The lyrics are "Joy, joy, — joy! — Joy, joy, — joy! —". The piano accompaniment continues with chords in the right hand and a simple bass line in the left hand. The chords are labeled as E/A, C/G, Dm/F, and E.

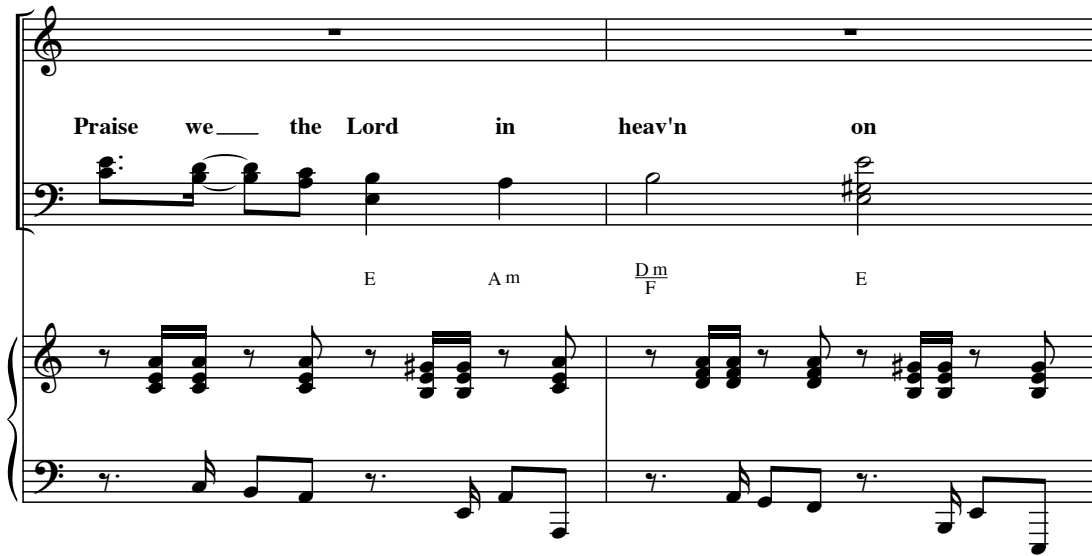
Praise we — the Lord **PREVIEW - Do Not Print** heav'n on — high!

A m E A m D m E A m

This system contains the third two lines of music. The top line is a vocal line in treble clef with lyrics. The bottom line is a piano accompaniment in bass clef. The lyrics are "Praise we — the Lord heav'n on — high!". A large watermark "lifewayworship.com" and "PREVIEW - Do Not Print" is overlaid on the music. The piano accompaniment continues with chords in the right hand and a simple bass line in the left hand. The chords are labeled as A m, E, A m, D m, E, and A m.

Praise we ___ the Lord in heav'n on

E A m $\frac{Dm}{F}$ E



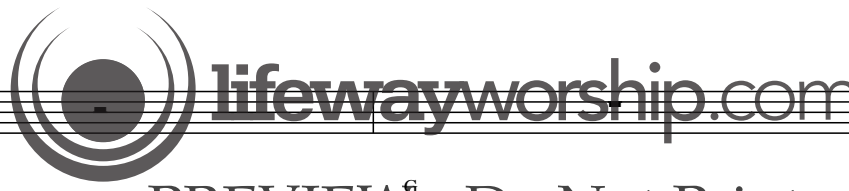
38 *Tenor Soloist:*
mf

And He has come ___ to bring His ___ great joy

high!

38 ^F

PREVIEW⁶ - Do Not Print



meet us here where we are.

Meet us here where we are.

C E F G G unis. N.C.

f

Detailed description: This system contains the first 45 measures of the piece. It features a vocal line, a piano accompaniment, and a guitar part. The vocal line has two parts: a soprano part and a piano part. The piano accompaniment has a treble and bass clef. The guitar part is indicated by chord symbols: C, E, F, G, G unis., and N.C. A dynamic marking of *f* (forte) is present in the piano part.

46

How great our

f

How great our joy, how great, how great.

PREVIEW - Do Not Print

Detailed description: This system contains measures 46-50. It features a vocal line and a piano accompaniment. The vocal line has two parts: a soprano part and a piano part. The piano accompaniment has a treble and bass clef. A dynamic marking of *f* (forte) is present in the piano part. A large watermark 'lifewayworship.com' and 'PREVIEW - Do Not Print' are overlaid on the score.

46

(drums continue)

Detailed description: This system contains measures 51-55. It features a piano accompaniment with a treble and bass clef. The bass clef part has a slash through it, indicating a drum part. The text '(drums continue)' is written in the piano part.

joy! Hey!
joy, for our hope has come.

joy for hope has come.
How great our joy, our Sav - ior has come.

D G A

This system contains the first three staves of the score. The top staff is the vocal line, the middle is the piano accompaniment, and the bottom is the bass line. The key signature is D major (two sharps). The first staff has lyrics 'joy! Hey!' and 'joy, for our hope has come.' The second staff has lyrics 'joy for hope has come.' and 'How great our joy, our Sav - ior has come.' The third staff shows chords D, G, and A.

(Soloist:)

54 *f* D G A D

This gift of God we'll cher - ish well,

This system contains the fourth and fifth staves. The fourth staff is the vocal line starting at measure 54, marked with a forte (*f*) dynamic. The fifth staff is the piano accompaniment. The key signature remains D major. The lyrics are 'This gift of God we'll cher - ish well,'. A large watermark 'lifewayworship.com' is overlaid on the piano accompaniment.

B m

PREVIEW - Do Not Print

That ev - 'ry joy our hearts shall fill. How

This system contains the sixth and seventh staves. The sixth staff is the vocal line, and the seventh is the piano accompaniment. The key signature changes to B minor (two sharps). The lyrics are 'That ev - 'ry joy our hearts shall fill. How'. A watermark 'PREVIEW - Do Not Print' is overlaid on the piano accompaniment.

great our joy!

CHOIR: mf

Great our joy!

F# B m F# B m

Joy, joy, joy!

 lifewayworship.com

PREVIEW - Do Not Print

G B D A Em G F#

Praise we the Lord in heav'n on high!

B m F# B m E m F# B m

This system contains the first two measures of the song. It features a vocal line with lyrics, a piano accompaniment, and guitar chords. The key signature is two sharps (D major). The piano accompaniment consists of chords in the right hand and a simple bass line in the left hand.

Praise we the Lord in heav'n on high!

F# B m E m/G F#

This system contains the next two measures of the song. It features a vocal line with lyrics, a piano accompaniment, and guitar chords. The key signature is two sharps (D major). The piano accompaniment continues with chords and a bass line. A watermark for 'lifewayworship.com' and 'PREVIEW - Do Not Print' is overlaid on the score.

66

How great__ our joy!__ Ex - cel-lent

f

high!__

How great__ our joy, how great, how great. How great__ our

66

B E F#

joy!__ How__ great³ our joy! Won - der-ful

How great, how great__ our

joy, How great__ our joy, for our hope has come, how great, how great, how great.

PREVIEW - Do Not Print

B E F#

Coun - sel-or's born. How great — our joy! —
joy! We praise our Sav - ior. —
our hope has come. —
How great — our joy, how great, how great.

B E F#

This system contains the first three staves of the musical score. The top staff is the vocal line with lyrics. The middle staff is the piano accompaniment. The bottom staff shows the chord progression: B, E, and F#.

How great — our joy, How great — our joy!

ff

ff

B E F# B

This system contains the next three staves of the musical score. The top staff is the vocal line with lyrics. The middle staff is the piano accompaniment. The bottom staff shows the chord progression: B, E, F#, and B. A watermark for 'lifewayworship.com' and 'PREVIEW - Do Not Print' is overlaid on the score. Dynamics markings include *ff* (fortissimo).