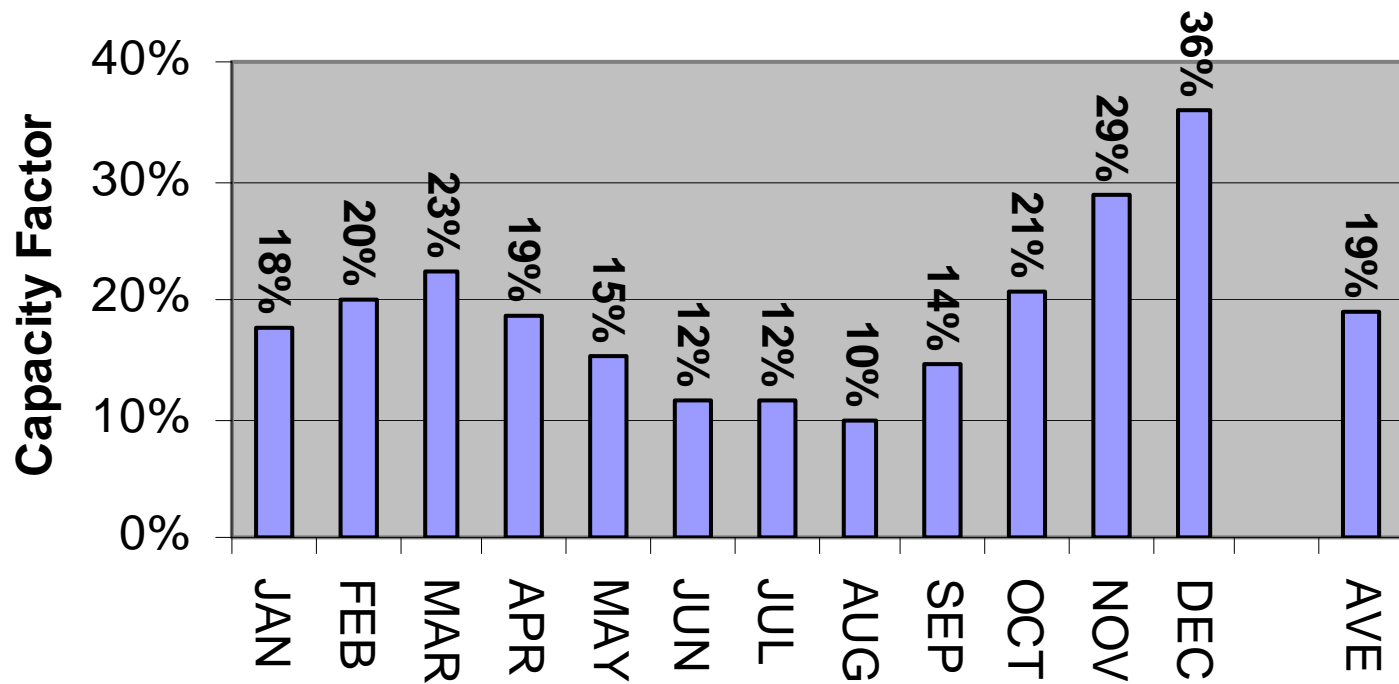


## Madison Windplant, NY (11.5 MW)

■ 2003-2004 Average Capacity Factor by Month and Annual Average



Data Source: US DOE, Energy Information Administration - [http://www.eia.doe.gov/cneaf/electricity/page/eia906\\_920.html](http://www.eia.doe.gov/cneaf/electricity/page/eia906_920.html)