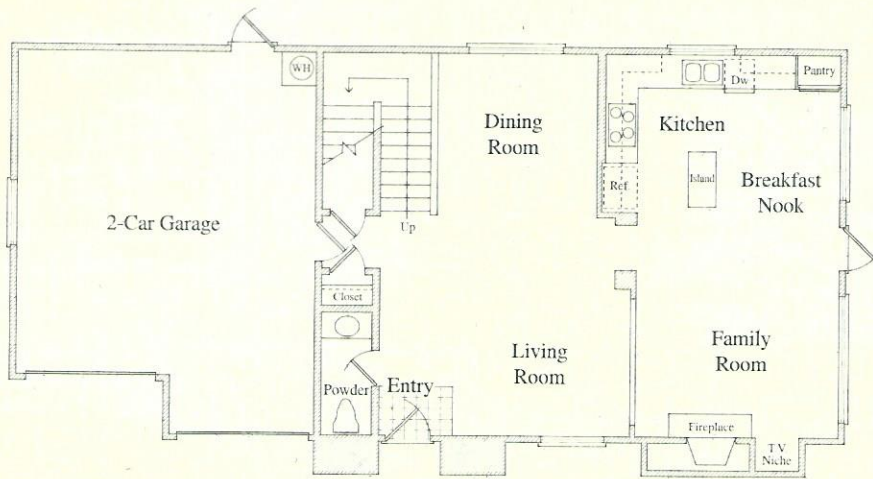


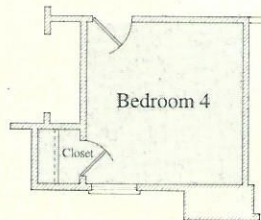
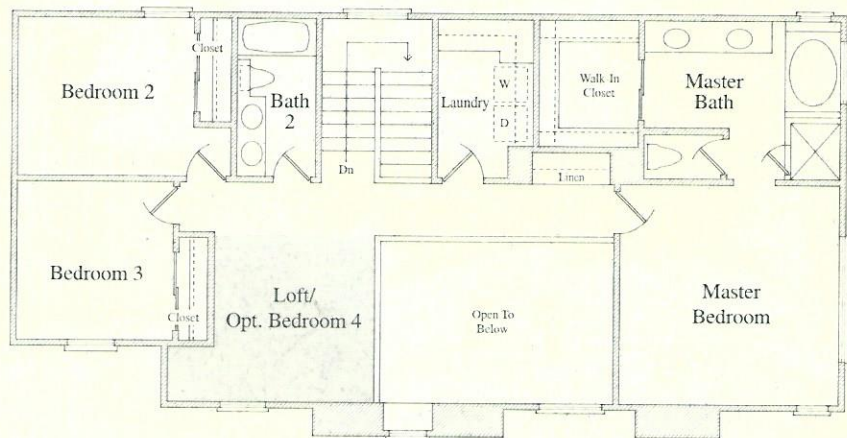
BEVERLY

Plan Four



Approximately 1,906 Square Feet
Three Bedrooms Plus Loft or
Four Bedrooms, Family Room,
Island Kitchen with Nook,
Two and One-Half Baths,
Interior Service Room,
Attached Two-Car Garage

Distinctly separate formal and informal
areas ensure a sparkling setting for
social gatherings, as well as a cozy
place to enjoy your quiet time.
Upstairs, the master suite is sequestered
for privacy: two spacious secondary
bedrooms share a loft...also offered as
a fourth bedroom option.



4A



4B

