

HAWAII PACIFIC YEARBOOK²⁰¹⁵



HAWAII PACIFIC

TABLE OF CONTENTS

President's Message	2	Adult Rankings.....	13
Board of Directors.....	2	Adult League Championships.....	14
Executive Director's Message.....	3	Adult Tournaments.....	17
Staff	3	Junior Final Rankings.....	18
Committee Members.....	4	Junior Team Tennis	20
Programs.....	4	National Junior Teams.....	21
Districts Year-in-Review	5	National Junior Tournaments.....	22
Annual Awards Banquet	8	2014 Royal Lahaina Challenger.....	23
Community Tennis Highlights	10		
Kahiau: A Tennis Foundation	12		



HAWAII PACIFIC ABOUT THE UNITED STATES TENNIS ASSOCIATION

The United States Tennis Association (USTA) is the national governing body for the sport of tennis in the United States and the leader in promoting and developing the growth of tennis at every level, from local communities to the highest level of the professional game. A not-for-profit organization with more than 770,000 members, it invests 100 percent of its proceeds in growing the game. It owns and operates the US Open, the highest-attended annual sporting event in the world, and launched the Emirates Airline US Open Series, linking nine summer tournaments to the US Open. In addition, it owns approximately 90 Pro Circuit events throughout the U.S. and selects the teams for the Davis Cup, Fed Cup, Olympic and Paralympic Games. The USTA's national charitable foundation, USTA Serves, provides grants and scholarships and helps underserved youth and people with disabilities. For more information on the USTA, log on to usta.com, "like" the official Facebook page, facebook.com/usta, or follow @usta on Twitter.

ABOUT THE UNITED STATES TENNIS ASSOCIATION HAWAII PACIFIC SECTION

The USTA Hawaii Pacific Section (USTA HPS) is one of the 17 geographic Sections within the USTA organization. Incorporated in 1973, the Hawaii Pacific Section embraces over 7,500 individual members and 109 organizational members in Hawaii, American Samoa, Guam and Northern Marianas. In addition, the Hawaii Pacific Section is further subdivided into five districts: Kauai, Oahu, Maui, East Hawaii & West Hawaii. The Hawaii Pacific Section is a volunteer-based organization dedicated to carrying out the goals of the national association within its region, particularly with respect to promoting tennis opportunities for juniors and adults of all abilities and all cultural backgrounds. For more information on the USTA Hawaii Pacific, log on to www.hawaii.usta.com, "like" the official Facebook page facebook.com/ustahawaii or follow @USTAHawaii on Twitter.

www.hawaii.usta.com

The United States Tennis Association Hawaii Pacific Section Yearbook is published annually. Photos contributed by Karl Watada of Pro Images Hawaii: proimageshawaii.photorelect.com. For more information or to advertise with the USTA Hawaii Pacific Section, contact Ryan Trujillo, USTA Hawaii Pacific Section Director of Marketing & Communications at trujillo@hawaii.usta.com.



PRESIDENT'S MESSAGE Kevin Inn - President

It has been another exciting year for tennis both at the national and local level. At the national level, the USTA appointed Katrina Adams, the first African American woman and the first former professional tennis player, to serve as the President and CEO of the USTA. Katrina played on the WTA tour and captured 20 career doubles titles. She attended Northwestern University and she was an NCAA All-American in 1986 and 1987. Katrina is currently the Executive Director of the Harlem Junior Tennis and Education Program in New York. The two major construction projects are moving along. Lake Nona in Orlando, Florida will be the new "Home of American Tennis" and is anticipated to open in late 2016. Lake Nona will be the home of the Community Tennis Division, Player Development Division, and Pro Circuits of the USTA. There will be approximately 100 tennis courts, a fitness center, dormitories, and offices.

The major construction and renovation of the USTA Billie Jean-King National Tennis Center at Flushing Meadow is also making progress. The major construction includes a roof over Arthur Ashe Stadium and a second mini-stadium court similar to court 17. The seating and viewing areas of the practice courts were completed on time and quickly became a popular area to view players. The long-term plan also includes re-building Louis Armstrong Stadium and the possibility of a roof over Louis Armstrong Stadium. The US Open generates a large amount of money and some of this money from the US Open funnels down to all USTA Sections. The USTA grants money to the Sections and designates that the funding must be used in certain areas to fund the mission "to promote and develop the growth of tennis".

At home in the USTA Hawaii Pacific Section, we had some exceptional results in some of our key programs! Adult Leagues grew by 3 % over 2013. Schools Tennis doubled its 2014 goal and included a very successful visit to Guam. Adult Competition grew about 1% in large part due to the Hawaii Masters Series, the Triple Crown of Tennis, and the Challenger Wild Card tournaments.

Our success has been the result of a collective effort on behalf of volunteers, Committee Chairs, staff and the USTA Hawaii Pacific Section Board of Directors and I would especially like to thank the Executive Committee and the Board of Directors for volunteering their personal time to serve the USTA Hawaii Pacific Section.

Lastly, I would like to thank our 7,500 members for their continued support and dedication to our mission to "promote and develop the growth of tennis" in our Section. Thank you for participating in our league and tournament programs. We sincerely appreciate your support and patronage. I hope to see you on the courts!

Mahalo,
Kevin Inn, President
USTA Hawaii Pacific Section

2013- 2015 Board of Directors



BACK (left to right): Ron Romano (Executive Director); Betsy Purapura (Director); Nick Yamasaki (West Hawaii Delegate); Riki Fujitani (Director); Ray Hasegawa (East Hawaii Delegate); Franklin Chee (Oahu Delegate); Glen Yee (Director); Dan Miyamoto (Kauai Delegate); and Kris Oyama (Maui Delegate). **FRONT** (left to right): Windy Cummings (Director); Pom Luxton (Director); David Lam (Director); Kevin Inn (President); Russell Lum (Sectional Delegate); Donna Ede (Secretary); Chris Scharein (Director); Shari Fujita (Treasurer) Absent: Sandra Gulley (Vice President); Emi Anamizu (Director)



EXECUTIVE DIRECTOR'S MESSAGE Ron Romano - Executive Director

The USTA Hawaii Pacific Section had an exciting year of growth, enhancements and increases in participation for most programs and events.

The year began with our signature event, the 2014 Royal Lahaina Challenger at the Royal Lahaina Resort on the island of Maui. The Hawaii Pacific Section is the only USTA Section to run its own Pro Circuit event. The Royal Lahaina Challenger is a \$50,000 men's Pro Circuit event the second week of the Australian Open. The USTA Hawaii Pacific Section has hosted six Futures and five Challengers in the past eleven years.

As part of the Challenger wild card opportunities, the Section ran three tournaments which provided winners an exciting opportunity to enter the main draws or qualifying draws in either singles or doubles.

- The Royal Lahaina Challenger Wild Card Tournament at the Oahu Club - The USTA Hawaii Pacific Section awarded a main draw wild card to the winner and a qualifying wild card to the finalist.
- Triple Crown of Tennis - Hawaii's top men's doubles teams battled for the prestigious title of Champions at three exciting events hosted by the USTA Hawaii Pacific Section, the Oahu Club and the Kailua Racquet Club.
- 2013 Oahu Club Open Championships - Over 35 of Hawaii's open, collegiate and high-performance juniors competed in the 2014 Oahu Club Open Championships.

The 2015 Royal Lahaina Challenger will be held at the Royal Lahaina Tennis Ranch. (www.royallahainahchallenger.com).

Adult tennis saw some significant changes in their results this past year.

- Overall Player registrations were up 5% for USTA Leagues over the previous year.
- Adult tournament registrations were up 10 % over the previous year.
- The Hawaii Masters series continues to grow with singles and doubles play in the 30, 40, 50, 60, 70, and 80 age divisions. There were four Hawaii Master Series events in 2014 with the finale in December during the Christmas holiday.
- The Triple Crown of Tennis also grew in 2014 with the greatest increases in the men's events.

Junior tennis continued to evolve and grow in 2014:

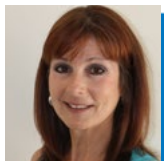
- There was an increase in Red/Orange/Green Ball play days and tournaments.
- Our 5th Annual Family Fun Doubles Tournament continues to be success with more entries every year.
- The Talent ID camps were a big success with Hawaii juniors coming from all islands and other talented juniors coming from Southern California.
- The National Selection Tournament was comprised juniors from all of the Hawaiian Islands and some of the top juniors from several USTA Sections.

Community Tennis had many success stories, but at the top of the list is the continued growth of the Schools Tennis and the Play to Learn program. These programs are self-sustaining and the number of participants continues to grow:

- Schools Tennis grew with the addition of a second Schools Tennis Organizer position. In 2014 we added 8 new schools as a result of a 21st Century Grant opportunity. In addition, we added 4 fee based schools programs. Lastly, a visit to our Guam District resulted in the largest increase in Schools Tennis with 7 workshops, 83 new coaches trained, and 2,100 youth participants!
- The Play to Learn program is a group tennis instruction program at over thirty public park sites in conjunction with the Department of Parks and Recreation. There are approximately 8,000 participants a year with 60 % youth and 40 % adults.
- Orange and Green Ball Junior Team Tennis is now a year round program with spring, summer, and fall seasons.
- Monthly Play Days and Entry Level Junior Tournaments are now monthly events in Hawaii.

The USTA Hawaii Pacific Section is striving to improve in all areas to support the mission of the USTA and the USTA Hawaii Pacific Section. We are excited about all of the opportunities to promote and develop the growth tennis in 2015!

STAFF



Jony Conching
Office Manager



Madeleine Dreith
Director of Community Tennis &
Tennis Service Representative



Ryan Trujillo
Director of Marketing &
Communications



Eduard Merc
Director of
Adult Tennis



Sheila Kurosu
Director of
Schools Tennis



Mimi Kennell
Director of
Junior Tennis



Fay Sakamoto
Community
Tennis Coordinator

2013 - 2015 COMMITTEE MEMBERS

ADULT LEAGUE COMMITTEE

Board Liaison: Saundra Gulley
Chairperson: Ted Gee
Staff Liaison: Eddie Merc
Members: Rosemary Smythe, Jane Sakakihara, Jody Singsank, Laura Shimada, Corey Au, Leonard Loventhal, Nancy Kelly & Jerry Jameson

ADULT COMPETITION COMMITTEE

Board Liaison: Betsy Purpura
Chairperson: Dale Parkham
Staff Liaison: Eddie Merc
Members: Henry Somerville, Dav Cabatingan, Jan Axel Tribler, Jack Blezard

BUDGET & FINANCE COMMITTEE

Board Liaison: Shari Fujita
Chairperson: Shari Fujita
Staff Liaison: Ron Romano
Members: Russell Lum, Kevin Inn, Saundra Gulley & Donna Ede

MARKETING/COMMUNICATIONS / MEMBERSHIP COMMITTEE

Board Liaison: Emi Anamizu
Chairperson: Lori Yip
Staff Liaison: Ryan Trujillo
Members: Karl Watada, Arlene Santos, Barry Nakasone

COMMUNITY TENNIS COMMITTEE

Board Liaison: Windy Cummings
Chairperson: Vailima Watson
Staff Liaison: Madeleine Dreith
Members: Masu Kusume Dyer & Rhoda Baron

GRIEVANCE COMMITTEE

Board Liaison: Glenn Yee
Chairperson: Vernon Hirata
Staff Liaison: Ron Romano

JUNIOR TENNIS COMMITTEE

Board Liaison: David Lam
Chairperson: Russell Lum
Staff Liaisons: Mimi Kennell
Members: Albert Murata, Chanon Alcon, Bernard Yip, Green Yuka, Manny Fernando, Vern Leaman, Henry Sommerville, Fumiya Nakano

NOMINATING COMMITTEE

Chairperson: Mike Purpura
Staff Liaison: Ron Romano
Members: Jenny Kelly, Barry Nakasone, Henry Somerville, Tom Roerk

OFFICIALS COMMITTEE

Board Liaison: Chris Scharein
Chairperson: Susan Welton
Co-Chairperson: Stefanie Higa
Staff Liaison: Ron Romano, Lindsey Keeler & Mimi Kennell

SCHOOLS AND COLLEGIATE COMMITTEE

Board Liaison: Donna Ede
Chairperson: Donna Ede
Staff Liaison: Sheila Kurosu
Members: Galen Nakamura

STRATEGIC PLANNING AND BY-LAWS COMMITTEE

Board Liaison: Russell Lum
Chairperson: Russell Lum
Staff Liaison: Ron Romano
Members: Saundra Gulley

PROGRAMS

The USTA Hawaii Pacific Section services the tennis community with the following programs:



Summer Fun Mobile Tennis | Coaches Workshops | Junior Competitive Training Clinics
Adult Tournaments | School Tennis | Wheelchair Tennis

www.hawaii.usta.com

2014 DISTRICTS YEAR-IN-REVIEW



KAUAI HAWAII DISTRICT TENNIS ASSOCIATION

www.kauai.usta.com

CAROLYN LUM, District President

hawaii96766@yahoo.com

Kauai Tennis Association (KTA) continues to support local tournaments at Poipu Kai Tennis Club for the past 7 years. These events, that are open to junior and adult players for extra fun and competition, have raised over \$30,000 for the Kauai United Way thanks to good player participation and Poipu Kai's donation of court use.

Participation in the USTA Adult League has its ups and downs according to League Coordinator Rosemary Smythe. Congratulations go out to the four teams qualifying for Nationals: Women's 40+ (4.0 & 4.5), Women's 18+ (4.0) and Mixed 40+ (9.0)

Island School, Kapaa High, Kauai High and Waimea High continue to offer fun and good play for Kauai juniors. Interest continues to grow with the junior programs offered around the island. Thanks go to Sheila Kurosu and Kim Kinberg for inspiring the kids at Kapaa and King Kaumualii Elementary Schools. Donna Umetsu and Lori Erickson continue to offer Quickstart at Eleele and Koloa Elementary as well. We look forward to more Schools Programs and maybe a summer camp in 2015.

KTA invites players of all levels and ages to join in our local Charity tournaments, Adult League and Play to Learn Programs! Call (808) 651-8213, email hawaii96766@yahoo.com or talk to the KTA board members: Carolyn Lum, Dan Miyamoto, Helen Young, Krystyna Noe, Rosemary Smythe, Jerry Green and Juan Lorenzo.



MAUI DISTRICT TENNIS ASSOCIATION

www.maui.usta.com

CHRIS SCHAREIN, District President

mdtahawaii@hotmail.com

In 2014 Maui was the hot spot for tennis that included hosting the Royal Lahaina Challenger (a USTA Pro Circuit event), Hawaii High School State Championships, Adult 40&Over Sectionals, Mixed 40&Over Invitational Championships, MIL, USTA Officials training, 8 Maui Grand Prix tournaments, 6 Adult/Mixed Leagues, 1 JTT and numerous school/community clinics.

Being a popular tennis destination comes with some big challenges for our Section & the District(s). "Mahalo" to the dedicated board members, Section staff, USTA officials and to the 150+ VOLUNTEERS on Maui who came out to work these events with the great spirit of Aloha. These events are a success because of everyone's dedication and passion for the sport of tennis.

This year MDTA donated ~\$17,000 in funds that blanketed a cross section of juniors, adults, professional tennis and community programs. These funds helped with travel costs for individual junior players who advanced to Zonals and Inter-sectional tournaments, but also to junior and adult teams that advanced to their National Championships. The RL Challenger and Mixed Invitational received funding and volunteer coverage. And within the community/schools MDTA funding also aided MIL & Molokai High School, 2 tennis professionals who completed their Cardio certification and to a Beginner Tennis Program that started in Central Maui. And once again, MDTA funded the "junior clinic" at the Wailea Fantasy Camp offering 24+ juniors an opportunity to learn from and hit with Lindsay Davenport, Tracy Austin, and Taylor Dent.

Our Maui District "ohana" welcomed several new tennis professionals to the island; Steve Campbell, Colleen Patton, and David Bryner at Kapalua Resort, along with Cason Mays at Maui Country Club. The District also added Susan Sato and Clarita Balala as LLC's, but had to say good-bye to long time LLC Colette Watanabe.

At the USTA HPS Tennis Awards Banquet several Maui individuals were recognized for their service and achievement: Marie Holmberg (MDTA Service Award), Royal Lahaina Tennis Ranch (Facility Award), Royal Lahaina Resort (Friend of Section Award) and Jean Okada (Hall of Fame Award in the player category). Congratulations to you all.

In 2015, MDTA's focus will continue to work on growing participation at all levels and ages, fund programs and events that benefit our community, and work with the County of Maui to ensure public court facilities meet the needs of our tennis community.

2014 DISTRICTS YEAR-IN-REVIEW



WEST HAWAII DISTRICT TENNIS ASSOCIATION

www.westhawaii.usta.com

SAUNDRA GULLEY, District President

westhawaiitennis@gmail.com

West Hawaii players' enthusiasm for "The Game" totally rocks! For the 3rd consecutive year, Adult League play grew, which was a herculean task in the face of continuing to offer all the new USTA leagues. We had record participation at our 5th Annual League Party, and shared Big Island aloha in hosting the 2014 Ekolu and Tri Level Sectional League Championships in West Hawaii.

WHDTA also proudly celebrated (and financially sponsored) our two 55+ Adult teams advancing to the 2014 National Championships: The Lava Girls SL55 8.0 Women's Team (captained by Pat Jamesson & Kathy Lindsey), and the Mauna Kea Breakers 7.0 Women's Team captained by Emily Tate.

WHDTA's continued dedication to "our kids" in 2014 included P/E school programs in Waimea, and our Annual Junior Championships in May – which included both singles and doubles this year. The District also sponsored 4 junior and 3 adult tournaments.

As a 100% volunteer organization, we can never be too grateful for our volunteers -- a heartfelt mahalo goes out to the dedicated and talented individuals who continue to serve on the WHDTA Board: Al Honey, Amy Nordin, Jerry Jamesson, Keely Rochon, Lily Acoba, Lovette Llantos, Nick Yamasaki & Shelly Pelfrey, and new members Emily Tate & Jeff Kam. We also recognize Pat Jamesson as the recipient of West Hawaii's 2014 District Service Award for going above & beyond in her support of tennis.



EAST HAWAII DISTRICT TENNIS ASSOCIATION

www.easthawaii.usta.com

LEONORA KUNIMOTO, District President

leokunimoto@hawaii.rr.com

East Hawaii District was guided through an eventful year by its officers and Board of Directors: President Leo Kunimoto, Vice-president Sheri Nishida, Secretary Valerie Galacgac, Treasurer Jane Iida, Past President Jill Atwal, District Delegate Ray Hasegawa, Hilo Junior Tennis Club President Gerald Kosaki; also, Donna Lim, Andrea Ueno, Nancy Kelly, Lori Nekoba, Peter Tadaki, and Clarysse Nunokawa.

Two very successful events were "Got Game" and "Tennis Festival." "Got Game" introduced tennis to 50 new and beginning players and made a pitch for league tennis. "Tennis Festival" was held in December as a thank you to adult and junior players for their involvement in tennis. Both events were free and provided attendees with food, tennis clinic, hit for prizes and lots of fun.

Several East HI juniors attended national events: Diana (Didi) Wong, Junior Nationals, Level 1, 16s; Emily Soares, 16 Zonals, National Hard Courts 16s; Sarah Dvorak, National Clay Courts, National Hard Courts, National Team; Maile Brilhante, 12 Zonals.

Several USTA League teams played in national tournaments: 2.5 mixed 18 and over, captain Pam Oki, Laila Jayyous, Kira Mae, Earl Maltezo, Ross Naito, Brent Nishi placed 4th; 8.0 men adult 55 and over, captain Grant Yamamoto, Scott Thompson, Tom Kekahio, Richard Cunningham, Tom Randle, Robin Takahashi, Ken Kuwahara, Dean Takebayashi, Henri Aki, Doug Pang, Bill Von Boeckman, Al Zavarro, Peter Follett, Jeff Kam; 2.5 W adult 18 and over, captain Valerie Galacgac, Brenda Ho, Tiffanie Okuda, Hanna Wilson, Jo Ann Ishida, Frances Calantoc, Billie Jo Vieira, and 6.0 adult 65 and over, captain Charlotte Etling, Linda Levine, Eunice Hashimoto, Annie Gleason, Ellen Higa, Jan Nakahara, Lucy Makuakane, Larie Kent placed 4th.

East HI District Leagues Committee consists eight members, six of whom are LLCs. This committee revises the district league rules whenever appropriate and manages any league related matters and concerns.

There are now five qualified referees, Bill Brilhante, Chris Brilhante, Mark Chun, Wayne Yamada, and Gerald Kosaki.

Three recipients were presented with section awards at the annual awards banquet: Emily Soares, Jim Howe Sportsmanship Award, Jane Iida, Section Service Award, and Andrea Ueno, District Service Award.

EHD gave awards to four people, Andrea Ueno, John Sumada (County of Hawaii) and Robin Takahashi (UHH) for going above and beyond in organizing and obtaining courts for league matches; Jane Iida for her major role in recruiting and organizing new and beginning players in league tennis resulting in a record number of 2.5 and 3.0 teams.

2014 DISTRICTS YEAR-IN-REVIEW



OAHU DISTRICT TENNIS ASSOCIATION

www.oahu.usta.com

KAZU SAMURA, District President

odtaboard@gmail.com

2014 has been another exciting year filled with good competition and fun, with a group of dedicated volunteers and directors who continue to give their energy and time to keep tennis alive & well in the Oahu District. As a 100% volunteer organization, we truly appreciate the countless hours and efforts from all who work to serve the game we love! The goal is to bring in new players to grow the game and support players to stay in the game, to truly make it a sport of a lifetime.

In 2014, the Oahu District Tennis Association (ODTA) utilized over \$100,000 in funds for adult, junior and community tennis programs.

ODTA continues its work to improve the quality of play with the Adopt-A-Court program with maintenance at selected public courts in the City and County of Honolulu, which are used by both junior and adult players. ODTA has an ongoing court maintenance program at 5 Reserve-A-Court schools that benefit junior and adult league players. This includes repair and installation of windscreens and nets, power washing, maintenance of the court surface and fabrication of benches.

We support our teams attending the National Championships, and our adult leagues with our Annual Captain's Brunch, balls for all league matches, court costs at CORP, captain's gift cards, and supplies for the local league coordinators.

ODTA has supported community-based tennis festivals in Waipahu, Ewa Beach and Village Park, to bring the game of tennis to families in their home communities. Children have fun playing tennis with their parents and friends, and it is the hope that they continue to stay in the game and possibly use it as an avenue of opportunity as they grow into teenagers and adults.

We would like to again thank all of our hard-working volunteers for giving so unselfishly of their time and efforts, to make tennis what it is on Oahu. We are always in need of more volunteers, so please visit us on our wonderful website at oahu.usta.com.

Patricia Flores
Age 47, Loan Officer

HAWAII TOURISM
AUTHORITY

Come play. **MAUI**
MOLOKAI • LANAI
VisitMaui.com 1-800-525-6284™

2014 TENNIS HALL OF FAME

ALA MOANA HOTEL | NOVEMBER 24, 2014

Kahiau: A Tennis Foundation, is responsible for establishing the criteria and handling the selection of inductees to the USTA Hawaii Pacific Section Tennis Hall of Fame. There are three Tennis Hall of Fame awards recognized among the community: Service, Player and Education. The Service Award honors a volunteer, official, coach or individual who has made outstanding contributions to tennis. The Player Award commemorates an individual that is recognized for outstanding competitive achievements with considerations of sportsmanship and character. The Education Award is presented to an individual who has demonstrated leadership and creative skills in such areas as instruction, writing, organization, coaching, and promotion of the game of tennis. In 2014, the USTA Hawaii Pacific Section proudly inducted two fine recipients for each category:



Masu Kusume Dyer
Service Recipient

Masu Kusume Dyer has called Hawaii her home since 1954. She was born in Japan and completed her higher education at the University of Hawaii. Masu and her husband, Medford, started one of the most successful moving companies in Hawaii, M. Dyer and Sons, over 45 years ago. While managing a booming business and raising five children, Masu still made time for volunteer service in many capacities that included government and political service. She was also a trustee at the Le Jardin Academy, a member of Hawaii Bound Board of Directors and Chair of the Hawaii Council of Camp Fire.

Passionate about tennis, she broadened her volunteer service to help others enjoy the lifetime sport. In the last 20 years her local and national tennis involvement included:

- President of Kahiau: A Tennis Foundation
- USTA National Committee Member serving School Tennis, Diversity, Team Tennis, & Wheelchair Tennis
- Chair of the USTA Hawaii Nominating Committee
- Chair of the USTA Hawaii Tennis Weekend
- USTA Hawaii Board Liaison for the Community Tennis and Volunteer Committee
- Chair of the Jean Fitzgerald Scholarship Committee
- Chair/Co-Chair of The Kailua Racquet Club Men's Night Doubles
- Volunteer for the US Open at the Billie Jean King National Tennis Center
- Volunteer for USTA Hawaii Section Events that includes the Pro Circuit Futures and Challengers

Masu's contributions have made an immense impact in fulfilling the mission of the USTA to grow the game. She has connected the USTA Hawaii Section to valuable national and international resources. Her countless hours of service are given with warm aloha and for the greater good of Hawaii tennis.



Jean Okada
Player Recipient

Jean Okada was raised in Lahaina, Maui as one of six children in the working class family of Nguyen and Kenneth Okada. She was the stellar product of the great Coach Shigesh Wakida. As a member of the Lahaina Junior Tennis Club, she dominated in every age group. She received the most outstanding female tennis player of the year at Lahainaluna High School as well as the Outstanding Female Athlete for her achievement in volleyball and soccer.

The late Coach Wakida, one of USTA Hawaii's first Tennis Hall of Fame Inductees, wrote this about Jean while she was still in highschool: "Jean has been an inspiration and a pillar of strength and courage, dedicated to the success of the team. She is a true sportsman, demonstrating her ability to lead and exceed beyond imagination. Her appreciation for all the opportunities showcases grace and dignity. Always reaching for seemingly unattainable heights, chasing that elusive if not an impossible dream. Her abiding faith and active participation in many other activities is a shining example that provides the strength and resources that move her forward."

A couple of years later, will and determination made dreams come true. She played NCAA Division I college tennis for UC Santa Barbara and is recognized as one of the greatest women's tennis players in the school's history. She was inducted into their Hall of Fame in 2010. Jean is the only player in UCSB history to earn All-American status as a singles player. She won All-Big West Conference first team singles honors in 1994, 1995 and 1996 and first team doubles recognition in four straight years. She was named the team Most Valuable Player in her junior and senior years and achieved the highest ITA singles ranking of any women's tennis player at UCSB.

Her success led her to the Professional Tennis Circuit and competed around the world. She achieved top 200 world rankings, 115 in singles and 200 in doubles. A highlight was making the draw at the US Open in 1998.

2014 TENNIS HALL OF FAME



Dr. David Porter
Education Recipient

A former collegiate tennis and basketball player at BYU-Utah, Dave Porter arrived at BYUH-Hawaii's Laie campus in the fall of 1982 to coach basketball with the hope of starting a tennis program. He helped the Seaside basketball team achieve their first twenty-game win season in school history. In the fall of 1984, Dave coached volleyball and led the women's volleyball team to 2nd place at the National NAIA Tournament, the highest finish for women's volleyball at that time.

That same year, 1984, Dave moved from basketball to tennis and was given responsibility for the men's program. During his 29 seasons which soon included the men's and women's teams, Dave compiled a record of 1,275 wins and 162 losses. He was the first coach in NCAA tennis history to coach both men's and women's teams to National Championships in consecutive years (2002 and 2003). His BYU - Hawaii women's teams are the three-time Pacific West Conference champions (2010, 2011, 2012). He has been named the National Coach of the Year 7 times. He has been named District and/or Regional Coach of the Year 15 times, won 14 Conference Titles, made 13 National Tournament appearances, coached 13 NAIA 1st team All-Americans, 2 NCAA II All-Americans and produced 5 NAIA scholar athletes. Dave Porter has results that many coaches only dream about. He transformed BYU-Hawaii to become one of the most dominant names in college tennis.

He has coached several world-class players, including Zheng Jie, ranked as high as No. 15 in the WTA and Li Na, ranked top 10 in the WTA. He worked closely with the Chinese National Women's Tennis Team/specifically the women's doubles Gold Medal winners in Athens 2004 and the 2006 Australian and Wimbledon doubles champions.

His impressive awards include:

- The USPTA's Alex Gordon Award for the Professional of the Year
- USPTA College Coach of the Year
- The International Tennis Hall of Fame Educational Merit Award
- The United States Olympic Committee "Doc" Councilman Award for Tennis

Dave Porter's passion for teaching, research and coaching has made an extraordinary impact in Hawaii's local community, The United States, and across the world.

PAST RECIPIENTS

2013

Sam Caldwell, Service Award
Jane Pang, Player Award

2012

Jane Sakakihara, Service Award
Sinclair Bill, Player Award

2011

Annie Miller, Service Award
Betsy Somerville Purpura, Player Award

2010

Jane Forester-Leong, Service Award
Muriel Ann Osborne, Player Award

2009

Vailima Watson, Service Award
Jim Schwitters, Player Award

More information about the USTA Hawaii Pacific Section's Tennis Hall of Fame please visit www.kahiautennis.usta.com

2014 SECTION ANNUAL AWARDS

SECTION SERVICE AWARDS

This award is given for each District in the Hawaii Pacific Section has selected a volunteer individual who has made outstanding contributions to promote and develop tennis through service, commitment and example.



Adrian Alvarez
Kauai



Avis Tamura
Oahu



Marie Holmberg
Maui



Pat Jamesson
West Hawaii



Jane Iida
East Hawaii



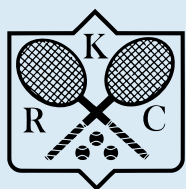
Joseph Cepeda
Guam

SPECIAL SERVICE AWARD



Hawaii Pacific Tennis Foundation
This award is given to an individual recognized for outstanding service.

ORGANIZATION MEMBER OF THE YEAR AWARD



Kailua Racquet Club
This award is given to a member club/organization that serves the tennis community with outstanding offerings.

SPECIAL FRIEND OF TENNIS AWARD



The Royal Lahaina Resort
This award is given to an individual or organization that has been integral in helping the section promote and develop the growth of tennis here in the Hawaii Pacific Section.

JIM HOWE SPORTSMANSHIP

This award is given to one boy and one girl junior player who exemplifies the finest qualities of sportsmanship in competitive play on and off the court.



Gregory Zukeran
Boy Award



Emily Soares
Girl Award

FAMILY OF THE YEAR



The Pang Family
(Kenneth, Deborah, Kendra, Katherine & Karleen)

FACILITY OF THE YEAR AWARD

**ROYAL LAHAINA
TENNIS RANCH**



KA'ANAPALI MAUI

Royal Lahaina Tennis Ranch
This award is given to an outstanding public tennis facility with USTA and other growth programs open to the public.

PRESIDENT'S AWARD



Galen Nakahara
This award is given to an extraordinary organization or individual that has prominently and positively changed lives through tennis.

2014 COMMUNITY TENNIS HIGHLIGHTS

USTA brought tennis to major community events that included the Great Aloha Run Health and Fitness Expo, YMCA Healthy Kids Day, YMCA Sports Camp, ESPN Kids Fest, and Youth Day at the Capitol. The Hawaii Pacific University Men's volunteered for Youth Day at the Capitol where we created a battery of tennis courts on Punchbowl Street.

SUMMER FUN TENNIS

Summer Fun Tennis introduced 1000 kids to tennis at the local parks. A 26 year partnership between the City & County of Honolulu and USTA, organizes teams of coaches to visit 20 public park sites. Coaches were Matthew Ong, Lauren Seki, Riley Inn, David Holt, Alyssa Tobita, Calvin Lee, Casey Baron, Jordan Kakugawa and James Kakugawa.



PLAY DAYS

Play Days are designed to give kids additional court time in a fun, low pressure, non-elimination setting where they can continue to develop and enhance their skills. For both novices and more experienced players, Play Days allow kids to experience the social and competitive aspects of tennis. Play Days promote a sense of achievement through a fun and spirited atmosphere.



2014 COMMUNITY TENNIS HIGHLIGHTS



FAMILY DOUBLES

In its 6th year, the Family Fun Doubles Tournament is the only parent/child competition in the Section. Held at C.O.R.P tennis facility, with over 35 teams in 4 different divisions, it was a family fun event for all!

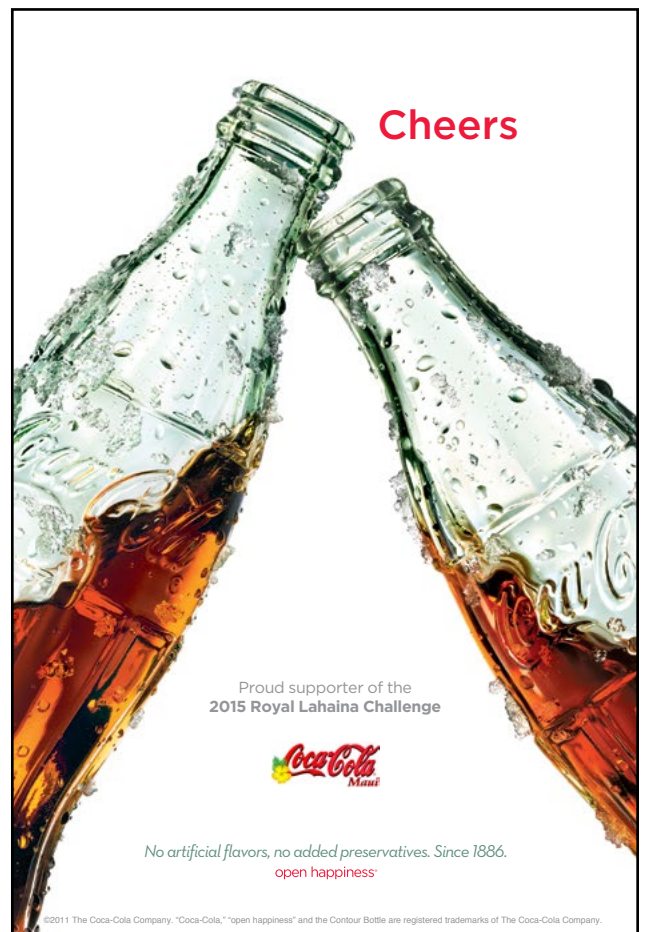
Results:

- Division A: Albert and Rayden Murata, Champions
- Division B: Jay and Riley Visaya, Champions
- Division C: Marlon and Marlon Abarca - Champions
- Division Green: Lito and Logan Duldulao - Champions

SCHOOL TENNIS



Tennis in schools provides kids with a fun, easy and safe introduction to the sport that can be played in any space. School Tennis visited Guam this year and held seven school workshops, servicing over 2,000 children and training over 80 teachers! Back in Hawaii, over 3,500 students and 150 teachers were introduced into the game! School Tennis saw growth with the hiring of Kim Kinberg as the part-time School Coordinator.





Kahiau: A Tennis Foundation is a 501(c) (3) non-profit organization, partner and the fund raising arm of the United States Tennis Association Hawaii Pacific Section. The mission of Kahiau is to promote the growth of tennis in Hawaii to youth, adults, and special populations by helping to fund programs conducted by the USTA Hawaii Pacific Section as well as other tennis organizations in the community.

2014 JUNIOR TENNIS CHAMPIONS CENTER SUMMER CAMP SCHOLARSHIP

These 3 top juniors were chosen to be sent to the Junior Tennis Champions Center to train with some of the nation's best players and coaches.



Skyla Alcon



Andrew Yip



Sage Leaman

SUMMER FUN TENNIS



SCHOOL DAY AT THE ROYAL LAHAINA CHALLENGER



KAHIAU: A TENNIS FOUNDATION GRANT RECIPIENTS

- City & County of Honolulu Department of Parks and Recreation Summer Fun Tennis Program
- USTA Hawaii Pacific Section Jr. Team Tennis Sectional Championships
- USTA Hawaii Pacific Section Regional
- Junior Championships
- USTA Oahu Jr. Fall Classic
- USTA Hawaii Pacific Section School Day at the Royal Lahaina Challenger
- Junior Tennis Champions Center Summer Camp Scholarship

www.kahiautennis.usta.com



THE KAHIAU CUP

The 2014 Kahiau Cup raised thousands of dollars for Kahiau: A Tennis Foundation. The charity tournament, held at the Oahu Club, featured eight teams who competed World Team Tennis style with hopes to take home the first ever, Kahiau Cup. Each team was assigned a local professional who acted as team captain. Dennis Lajola, Ikaika Jobe, Mikael Maatta, and Betsy Purpura were some of the pros that volunteered their time for the event. What made the tournament fun was the World Team Tennis format, which allowed pros to sub in at any given time. Each of the matches were timed and teams competed in a round robin format.

"The chatter, banter and continuous laughter [at first] confused me. Especially after watching a pro and his partner work like the 'dickens' to earn the point, only to have their opponents pull out a 'do over ticket' to replay the point," said Donna Ede, USTA board member and sponsor of the Vision Care Centers Hawaii team. Each player was able to purchase mulligans in case they wanted to do over any important missed points. "The laughter was contagious as was the continuous fist bumps, high fives and hugs I guess I should also mention there was a lot of great tennis," she concluded.

"It was awesome to see people who love the game come together and play for such a great cause," said Andrea Zannoni, pro for the Market City Shopping Center team. "I can see this tournament growing every year! It is a truly unique experience that benefits youth tennis in Hawaii!" concluded Zannoni.

The tournament led up to the victory of the American Savings Bank team, led by pro Mikael Maatta and sponsored by Pom Luxton. Food and drinks were provided to all players as well as door prizes and raffles. HEAD/PENN was onsite with the sponsor of tennis balls for tournament play as well as demo rackets. Special mahalo to all of our sponsors; American Savings Bank, Carlsmith, Vision Care Centers Hawaii, Market City Shopping Center, Outrigger Hotels and Resorts, Richard Ing, and Kevin Inn and friends, HEAD/PENN, and the Oahu Club. We would also like to thank our pros, Jan Tribler, Mikael Maatta, Besty Purpura, Dennis Lajola, Ikaika Jobe, Andrea Zannoni, Rong Ma, and Zora Vlckova. Kahiau looks forward to the 2nd Annual Kahiau Cup in 2015.



American Saving's Bank, Champions

2014 ADULT YEAR-END RANKINGS

OPEN RANKING

Men's Open Singles

1. Nils Schuhmann
2. Ryan Chang
3. John L. Dye
3. Jon A. Brooklyn
5. Grischa Hendreschke
6. Terry Juchartz
7. Carter Lam
7. Phuc Thien Huynh
9. Kawika Lam
9. Chas Okamoto
9. Kulamau'ukomohana Companion
9. Grant C. Zukeran
9. Quinton Muronaga
14. Andre A. Ilagan

Women's Open Singles

1. Xiao Yi Wang-Beckvall

Men's Open Doubles

1. Pierre Tafelski/Hendrik Bode
2. Denis Lajola/Ikaika Jobe
3. Logan Chun/Darin Poei
4. Mikael Maatta /Jan Axel Tribler
5. Daisuke Nakayama/Jeffrey Liang
6. Todd Hall/Kevin Peebles
7. Kevin Wong/Roman A. Kop
7. Jared Carstenn/John R. Kennedy
9. Jeffrey Grimmer/Scott Grimmer
10. Joshua Potterton/Scott Chon

11. Davin Lee/Sage Katayama

12. Kui Ramos/Scott Nishimura

12. Ryan C. Trujillo/Marcus Pearman

Women's Open Doubles

1. Alyssia Fossorier/Katreina Corpuz
2. Yanita Venelinova Arnaudova/ Taylor Lau
3. Yu-Hsien Kennell/Casey Cummings
4. Kana Aikawa/Mackenzie White

Mixed Open Doubles

1. Harold Fernandez/Jody Singsank
2. Xiao Yi Wang-Beckvall/Robert Allen Beckvall

NTRP RANKING

Men's 3.5 Singles

1. Marlon Abarca
2. Tyrone Crockwell
3. John Burns
3. John Deinhardt
5. Milton Nitta
6. Stanley Shimabukuro
6. Joseph Lacaden
6. Silvan Engert
6. Kalaivanan Shunmugaraj

Men's 4.0 Singles

1. Olaka'inoa Kwanji Huddy
1. Hia Chan
3. Richardo Alboro
4. Adam Paul
5. James Thomas
5. Jeff Korcan
5. Mauri Galvez
5. Michael R. Vierra
5. Joel Alexis Camacho
10. Frank Ford
11. Lone Wolf
12. Tyrone Crockwell

Men's 4.5 Singles

1. Gerald Coons
2. Morgan Henderson
3. Hiep Truong

Women's 3.5 Singles

1. Susan Miller
1. Lisa Potterton
1. Karin Engert

Women's 4.0 Singles

1. Liezl Lao

ADULT RANKING

Men's 30 Singles

1. Kui Ramos
2. Eduard Merc
3. Mikael A. Matta

Men's 40 Singles

1. John Dye
2. Matthew Guard
3. Alex Ruiz
4. Marc Cayetano

Men's 50 Singles

1. Robert Beckvall
2. Terry Juchartz
3. Lee Couillard
4. Leonard Loventhal
5. Mark Yoshizu
6. Greg Smith

Men's 60 Singles

1. Dale Parham
2. Randall Yanagi
3. Jerry Hubbard
4. Richard Moeller
5. Curtis Miller
6. George Nations
7. Milton Nitta
8. Lynne Stainbrook
9. Stanley Shimabukuro

Men's 70 Singles

1. Max Pavon
2. Jerry Bona
3. Allwyn Chao
4. James Toguchi

Women's 50 Singles

1. Sheila Kurosu
2. Anne Stevens

Women's 60 Singles

1. Alda Keomaka

Men's 50 Doubles

1. Martin Black/Robert Beckvall

Men's 60 Doubles

1. Don Huang/Paul Botts
2. Dale Parham/Alan Kim
3. James Toguchi/Andres Libed
4. Ference Danko/Mark Gruber
5. Lynne Stainbrook/Henry Erwin

Men's 4.0 Doubles

1. Morgan Henderson/Mauri Galvez
2. Bobby Burritt/Richardo Alboro
3. Paul D. Dunn/Tom Glesne
3. Michael R. Vierra/Robert Thomas Horhager
3. Lone Wolf/Daniel Anthony Weaver
3. Jeff Korcan/Monty Neal

Men's 4.5 Doubles

1. Harold Fernandez/Herbert Tedebjork

Women's 3.5 Doubles

1. Mercedes Bate/Susan Miller
1. Roselle Morala/Renee Jorg

Women's 4.0 Doubles

1. Juliana Massenburg/Joanne Mezin
2. Maile Ford/Christine Ho

Women's 4.5 Doubles

1. Keiko Ichimaru/Janet M. King
2. Fran Hill/Deborah Dorenzo

Mixed 7.0 Doubles

1. Tina Archer/Jamie Lopez

Mixed 8.0 Doubles

1. Vera Wang/Robert Allen Beckvall
2. Tatiana Omokawa/Christopher T. Hong
2. Robert McGuire/Liliana Bruggemann
4. Lynne Stainbrook/Alda Keomaka

2014 ADULT LEAGUE CHAMPIONSHIPS



ADULT 18 & OVER LEAGUE SECTION CHAMPIONSHIPS

Patsy T. Mink Central Oahu Regional Park, Oahu | August 15-17, 2014



OC Doublicious

Captain: Saori Goodman
3.0 Women's Adult Champions



Smashing Divas

Captain: Vanessa Silva
3.5 Women's Adult Champions



Pivotal

Captain: Sonya Halladay
4.0 Women's Adult Champions



X

Captain: Paul Lam
4.0 Men's Adult Champions

OTHER CHAMPIONSHIP TEAMS

Chix With Stix 2.5

Captain: Shannon Tamimi
2.5 Women's Adult Champions

Surf & Volley

Captain: Joshua Potterton
3.5 Men's Adult Champions

Pure Storm

Captain: Bryan Nakaki
3.0 Men's Adult Champions

Everything is Awesome!

Captain: Sara Yoshinaga
4.5 Women's Adult Champions



KRC Knights

Captain: Jeff Grimmer
4.5 Men's Adult Champions

NATIONAL CHAMPIONSHIP PLACED TEAMS

2nd place - Oahu Old School Chip & Charge

October 23-25, 2014 - Indian Wells, CA
4.5+ Men's Adult 40 & Over

2nd place - Oahu -One Shot

November 13-15, 2014 - Tucson, AZ
7.0 Adult Mixed 18 & Over

3rd place- Oahu - Anything Goes!

March 13-15, 2014 - Surprise, AZ
6.0 Women's Adult 65 & Over

4th place - Oahu - Pam's Team

November 13-15, 2014 - Tucson, AZ
2.5 Adult Mixed 18 & Over

4th place- Oahu WaiEwa Greatest Hits

November 13-15, 2014 - Surprise, AZ
6.0 Adult Mixed 40 & Over

2nd place - Oahu - Hui O Kenika

October 16-18, 2014 - Tucson, AZ
3.5 Men's Adult 40 & Over

Winner- Oahu - 96797

October 30 - November 1, 2014
Indian Wells, CA
4.0 Men's Adult 40 & Over

4th place - Oahu - Wrinkles in Time

March 13-15, 2014 - Surprise, AZ
8.0 Women's Adult 65 & Over

Winner - Oahu - Waipio.S

November 20-22, 2014 - Tucson, AZ
6.0 Adult Mixed 18 & Over

Winner - Oahu - Pasicaran

November 20-22, 2014 - Surprise, AZ
7.0 Adult Mixed 40 & Over

2014 ADULT LEAGUE CHAMPIONSHIPS



ADULT 40 & OVER LEAGUE SECTION CHAMPIONSHIPS

Maui | May 17-18, 2014

Maui D'Renegades

Captain: Renee Jorg
3.0 Women's Champions

Oahu Hui O Kenika

Captain: Dean Yamashiro
3.5 Men's Champions

Maui Wild Wahines O Wailea

Captain: Ramani
3.5 Women's Champions

Oahu Team 96797

Captain: Warlo Pasicaran
4.0 Men's Champions

Kauai 4.0 Lihue

Captain: Shannon Burkman
4.0 Women's Champions

Oahu Old School Chip & Charge

Captain: Lance Au
4.5 Men's Champions

Kauai Breakers

Captain Jennifer Hreljac
4.5 Women's Champions



Waipio.S

Captain: Jacqueline Jung
6.0 Mixed 18 & Over Champions

ADULT MIXED 18 & OVER SECTION CHAMPIONSHIPS

Patsy T. Mink Central Oahu Regional
Park Tennis, Oahu | June 21 - 22, 2014



One Shot PR

Captain: Garrett Tanouye
7.0 Mixed 18 & Over Champions



TKO Tennis

Captain: Wendy Wailehua
8.0 Mixed 18 & Over Champions



KRC 9.0

Captain: Jeffrey Grimmer
9.0 Mixed 18 & Over Champions

2014 ADULT LEAGUE CHAMPIONSHIPS



MIXED 40 & OVER LEAGUE SECTION CHAMPIONSHIPS

West Hawaii | September 27 – 28, 2014



THOF-Greatest Hits

Captain: John Velarde
6.0 Mixed 40 & Over Champions



96797

Captain: Warlo Pasicaran
7.0 Mixed 40 & Over Champions



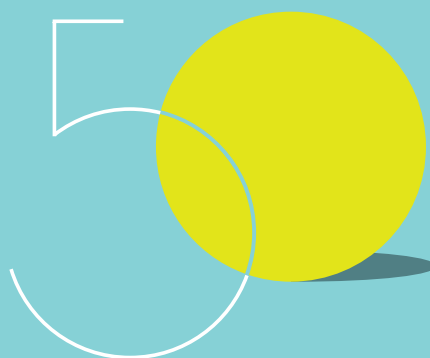
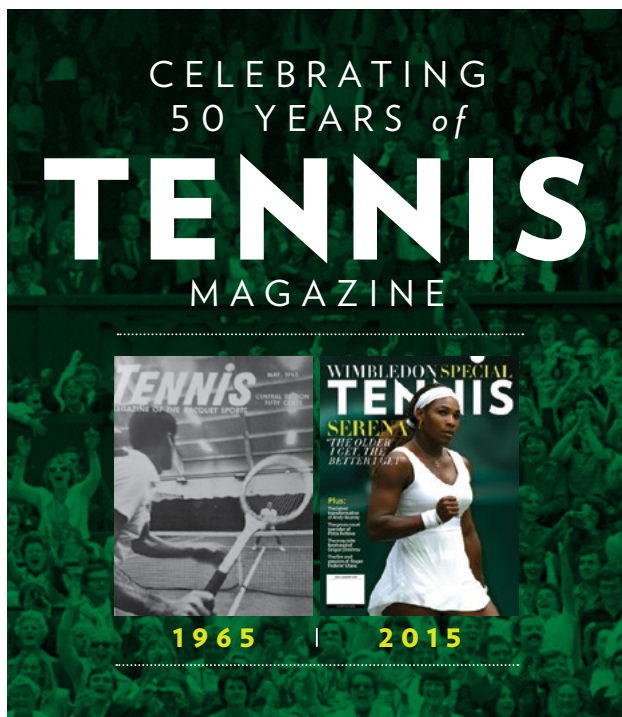
Pineapple Express

Captain: Wendy Vause-Wailehua
8.0 Mixed 40 & Over Champions



Breakers

Captain: Jennifer Hreljac
9.0 Mixed 40 & Over Champions



Having spent half a century as the sport's premier resource since its launch in May 1965, Tennis Magazine is the essential lifestyle guide for the game's enthusiasts. The July/August 2015 issue of Tennis—the annual Wimbledon Special—continues the celebration of looking back at five decades of existence.

ON SALE JUNE 16

2014 ADULT LEAGUE CHAMPIONSHIPS



ADULT 55 & OVER SECTION CHAMPIONSHIPS

Patsy T. Mink Central Oahu Regional Park Tennis Complex, Oahu
July 26 – 27, 2014



Munch Bunch

Captains: Gwendolyn Murai and
Elizabeth Maki
6.0 Women's Champions



Hana Hou

Captain: Clyde Miyasato
7.0 Men's Champions



Mauna Kea Breakers

Captain: Emily Tate
7.0 Women's Champions



Grant's Team

Captain: Grant Yamamoto
8.0 Men's Champions



Lava Girls SL55

Captain: Pat Jamesson
8.0 Women's Champions

EKOLU SECTION CHAMPIONSHIPS

Patsy T. Mink Central Oahu
Regional Park Tennis Complex, Oahu
February 21 – 22, 2014

KRC 6.0

Captain: David Pascua
6.0 Ekolu Champions

96797

Captain: Warlo Pasicaran
7.0 Ekolu Champions

Vicious & Delicious

Captain: Kimberly Y.Oho
8.0 Ekolu Champions

Swing Into Season

Captain: Miyuki S.Haught
9.0 Ekolu Champions

2014 ADULT TOURNAMENTS

MEN'S TRIPLE CROWN OF TENNIS

The Oahu Club Men's Night Doubles
June 23 – 28, 2014

**Ikaika Jobe / Dennis Lajola (2) def.
Hendrik Bode / Pierre Tafelski (3) 6-2; 6-2**

HAWAII PACIFIC MEN'S NIGHT DOUBLES
July 7 – 12, 2014

**Hendrik Bode / Pierre Tafelski (2) def.
Mikael Maatta / Gregg Takata(3) Wo (pc)**

KAILUA RACKET CLUB MEN'S NIGHT DOUBLES
July 20 – August 2, 2014

**Ikaika Jobe / Dennis Lajola (1) def.
Maatta, Mikael / Jan Axel Tribler(2) 6-1; 6-3**



TRIPLE CROWN DOUBLES CHAMPIONS
Dennis Lajola (left) & Ikaika Jobe (right)

ROYAL LAHAINA CHALLENGER WILDCARD TOURNAMENT

January 9 – 12, 2014

Petr Michnev (1) def. Thibaud Berland 6-2; 6-2



**2014 ROYAL LAHAINA CHALLENGER
WILDCARD CHAMPION**
Petr Michnev

HAWAII PACIFIC WOMEN'S NIGHT DOUBLES

September 28 – October 4t, 2014

**Martina Kostalova / Katarina Poljakova (1) def.
Yanita Arnaudova / Taylor Lau 3-6; 6-3**

KAILUA RACKET CLUB MIXED NIGHT DOUBLES

November 3 – 8, 2014

**Karen Liu / Rong Ma (1) def.
Mikael Maatta / Zora Vickova (4) 8-5**

THE OAHU CLUB HONOLULU MEN'S MASTERS OPEN TOURNAMENT

September 13 – September 21, 2014

Thibaud Berland (1) def. Nils Schuhmann (6) 6-3; 6-2
Men's Singles
Thibaud Berland / Yann Renault (1) def. Jakub Hadrav / Jaume
Martinez-Vich (3) 6-1; 4-6; 1-0(5) Men's Doubles
Lindsey Keeler def. Clarise Huang (1) 6-3; 6-3 Women's Singles

2014 BNP TRI-LEVEL NATIONAL CHAMPIONSHIPS

Indian Wells Tennis Garden, Palm Springs, CA
January 17 – 18, 2014

3.5 Women - Kauai
Michelle Fitzgerald

4.0 Women - Kauai
Shannon Burkman

4.5 Women - Oahu
Pom Luxton

3.5 Men - Oahu
Ray Nishimura

4.0 Men - Oahu
Alden Lum

4.5 Men - Oahu
Brett Krueger

2014 JUNIOR FINAL TOP RANKINGS



Azuma Visaya
Boys' 12 Singles



Andre Ilagan
Boys' 14 Singles



Sage Leaman
Boys' 16 Singles



Kawika Lam
Boys' 18 Singles

BOYS' 12

1. Visaya, Azuma
2. Yamamoto, Scott
3. Fujimori, Hunter
4. Kwock, Gabriel TzuZheng
5. Rooney, Aidan
6. Visaya, Riley
7. Somerville, Andrew
8. Wu, Scott
9. Toledo, Ethan
10. Fernando, Zack
11. Merletti, Roman
12. Yoshida, Leon
13. Leng, Andrew Huang
14. Chang, Aaron Shigemi
15. Yamashita, Ty Matao
16. Shapiro, Quinn Michael
17. Wong, Joshua Ryan
18. Hamano, Luke Hiroo
19. Brown, Jadon K
20. Domingo, Trent

BOYS' 14

1. Ilagan, Andre A.
2. Huynh, Phuc Thien
3. Lam, Kailuhia
4. Yee, Shane
5. Heaven, Zion
6. Ramos, Leyton Manuel
7. Virtue, Hayden
8. Hu, Joey K.S.T.
9. Azuma, Jordan S.
10. CALDWELL, MASON
11. Camacho, Camden R
12. alvarico, jathniel john
13. Ching, Cody
14. Miyagawa, Reyn Reiji
15. Lau, Robert Tinbow
16. Huang, Daniel WeiHsian
17. Liu, Evan Kuei Heng
18. Chung, Matthew I
19. Guccione, Brett Morris
20. Ishimura, Ethan

BOYS' 16

1. Leaman, Sage
2. Fujitani, McKenna Jay
3. Baldwin, Joey
4. Esaki, Seann
5. Akagi-Okuma, Jace
6. Huynh, Phuc Thien
7. Shirkhodai, Shayan
8. Bersola, Brent
9. Ellen, Keanu Daniel
10. Hayashi, Marc
11. Ilagan, Andre A.
12. Tuncap, Brian Vaughn
13. Yip, Andrew
14. Apisaloma, Anakele
15. Hu, Darwin
16. Chong, Braxton
17. CALDWELL, MASON
18. Ma, Jaryd
19. Wilson, Mackenzie Price
20. Azuma, Jordan S.

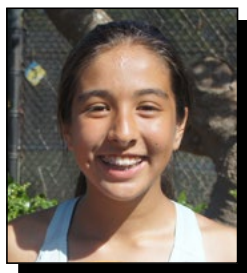
BOYS' 18

1. Lam, Kawika B.K.
2. Zukeran, Gregory C.
3. Lau, Travis
4. Fujitani, McKenna Jay
5. Liang, Jeffrey
6. Bersola, Brandan
7. Motoshige, Kyle Aaron
8. Esaki, Seann
9. Minakata, Junichi
10. Cepeda, Joshua P
11. Chang, Ryan
12. Ellen, Keanu Daniel
13. Gallagher, Finn
14. Katayama, Sage
15. John, Anthony
16. Tuncap, Brian Vaughn
17. Kitagawa, Hideto
18. Sogi, Hiromu
19. Makabe, Tyler T.
20. Travalino, Keanu
Mason Edward

2014 JUNIOR FINAL TOP RANKINGS



Sabrina Loui
Girls' 12 Singles



Casey Cummings
Girls' 14 Singles



Taylor Lau
Girls' 16 Singles



Sarah Dvorak
Girls' 18 Singles

GIRLS' 12

1. Loui, Sabrina
2. Brilhante, Maile
3. Kalabukhova, Anna
4. Lopes, Trystin
5. Fernando, Nikki
6. Kunimoto, Keilyn
Natsumi Joy
7. Alcon, Annika RK
8. Huang, Josette Kailing
9. Wu, Cosette
10. Lopez, Jessalyn Alicia
11. Uyeda, Melanie
12. Sharipova, Asiya
13. Oda, Kianna Kinue
14. Miyatani, jady
15. Flores, Megan Agustin
16. Mock, Kaylee Nicole
17. Medora, Kamea Sheila
18. Centra, Alexandra
Donega
19. O'Neill, Jacqueline
20. Malakooti, Kaia C

GIRLS' 14

1. Cummings, Casey
2. Tsukamoto, Sara
3. Corpuz, Katreina
4. Huang, Clarise Kaili
5. Okamoto, Lillian Lelehua
6. Rooney, Isabella Luisa
7. Kanja, Kourtney
8. Kalabukhova, Anna
9. Huang, Josette Kailing
10. Wang-Beckvall, Xiao Yi
11. Nakamura, Anna
12. Brilhante, Maile
13. Ralar, Kaitlyn
14. Emoto, Dale
15. Merletti, Alyssa
16. Inouye, Celeste
17. Siaso, Gabriela
18. Domingo, Sarah
19. Fitzgerald, Mia P
20. Lopez, Jessalyn Alicia

GIRLS' 16

1. Lau, Taylor Brianna
2. Kato, Kylee K.
3. Soares, Emily H.
4. Wong, Diana Ruth Takae
5. Fossorier, Alyssia
6. Tsukamoto, Sara
7. uyeda, michelle
8. Ikioka, Sarah
9. Okamoto, Lillian Lelehua
10. Costello, Kelly Wan
11. Fujimori, Haley
12. Bryant-Otake, Tristen
13. Okazaki, Laura
14. Kalabukhova, Anna
15. Wong, April
16. Yasunaga, Jaylee
Lagumen
17. Jyo, Erin
18. Min, Jade Juhong
19. Corpuz, Katreina
20. Le, Serena

GIRLS' 18

1. Dvorak, Sarah
2. Tobita, Alyssa T.
3. Ishimura, Ashley
4. Lau, Taylor Brianna
5. Alcon, Skyla SK
6. Soares, Emily H.
7. Kato, Kylee K.
8. Costello, Kelly Wan
9. Bryant-Otake, Tristen
10. Nadler, Camdyn
11. Langmade, Mackenzie L
12. Green, Lani Rae
13. Ikioka, Sarah
14. Manz, Kayla Michelle
15. Corpuz, Katreina
16. Tsukamoto, Sara
17. Gadsden, Chloe
18. Nakasato, Alysse
19. Kalabukhova, Anna
20. Fujimori, Haley

2014 JUNIOR TEAM TENNIS



SPRING SECTIONAL CHAMPIONSHIPS

Pasty T. Mink Central Oahu Regional Park Tennis Complex
May 17 - 18, 2014



Slamming Acers
14 & Under
2.5 Spring Champions



Tennis Pups
18 & Under
2.5 Spring Champions



Mid Pacific Tennis Academy
12 & Under
3.0 Spring Champions



Royal Lahaina Tennis Club
14 & Under
3.0 Spring Champions



High Performance Tennis Storm
18 & Under
3.0 Spring Champions



Mililani 10s Kidz Hurricanes
14 & Under
3.5 Spring Champions



Manoa Valley Tennis
18 & Under
4.0 Spring Champions



Tennis Insanity
14 & Under
Open Spring Champions



Survivors
18 & Under
Open Spring Champions

OTHER CHAMPIONSHIP TEAMS

Aiea Warriors
12 & Under - 2.5 Spring Champions

2014 JUNIOR TEAM TENNIS



WINTER SECTIONAL CHAMPIONSHIPS

Pasty T. Mink Central Oahu Regional Park Tennis Complex
December 13 - 14, 2014



Makiki Warriors
12 & Under
2.5 Winter Champions



Rockets
14 & Under
2.5 Winter Champions



Wailae Country Club
12 & Under
3.0 Winter Champions



Kilauea Fire
14 & Under
3.0 Winter Champions



Hawaii Kai Tennis
14 & Under
3.5 Winter Champions



**High Performance Tennis
Storm**
18 & Under
3.5 Winter Champions



Tiger Tennis
18 & Under
4.0 Winter Champions



Mid-Pacific Tennis Academy
18 & Under
Open Winter Champions



Mililani Monster Tennis East
14 & Under
Open Winter Champions

NONSTOP FLIGHTS FROM HONOLULU TO
LAS VEGAS
ONE WAY AS LOW AS **\$171***



Only at **allegiant.com**
Travel is our deal.

*Must be purchased by 2/6/15 for travel by 8/18/15. Price reflects debit card discount; credit card price higher. Fares may not be available on all flights; restrictions apply.

2014 NATIONAL JUNIOR TOURNAMENTS

2014 NATIONAL JUNIOR TEAMS

The following juniors represented the Hawaii Pacific Section in their respective age division national team championships.

12s ZONE TEAM

Robert Chang
Cody Ching
Gabe Kwock
Andrew Somerville
Azuma Visaya
Scott Yamamoto
Loui, Sabrina
Lopes, Trystin
Alcon, Annika
Brilhante, Maile
Fernando, Nikki
Huang, Josette

14s ZONE TEAM

Yip, Andrew
Azuma, Jordan
Hu, Joey
Miyagawa, Reyn
Ikehara, Tyler
Shuman, Justin
Yamagata, Tayvia
Okamoto, Lillian
Rodick, Meghan
Wo, Betsy
Nakamura, Anna
Huang, Clarise

16s ZONE TEAM

Fujitani, McKenna
Esaki, Seann
Bersola, Brent
Akagi-Okuma, Jace
Makabe, Tyler
Ikioka, Sarah
Chong, Braxton
Lau, Taylor
Soares, Emily
Corpuz, Katreina
Costello, Kelly
Bryant-Otake, Tristen

BOYS & GIRLS 14 INTERSECTIONAL TEAM

Heaven, Zion
Hotz, Makoa
Boulais, Justin
Cummings, Casey
Fujimori, Haley
Fujimori, Taryn
Chekuri, Nithya

BOYS & GIRLS 16 INTERSECTIONAL TEAM

Baldwin, Joey
Leaman, Sage
Shirkhodai, Shayan
Hayashi, Marc
Kato, Kylee
Wong, Diana
Wong, April

GIRLS 18 NATIONAL TEAM

Dvorak, Sarah
Tobita, Alyssa
Ishimura, Ashley
Alcon, Skyla
Yasunaga, Jaylee
Kim, Katie

BOYS 18 NATIONAL TEAM

Lam, Kawika
Zukeran, Gregory
Liang, Jeffrey
Lau, Travis
Chang, Ryan
Motoshige, Kyle

REPRESENTED THE
HAWAII PACIFIC
SECTION AT THE
NATIONAL JUNIOR
TEAM TENNIS
CHAMPIONSHIPS:

High Performance Tennis Storm
18 & Under – 3.0 Division

Royal Lahaina Tennis Club
14 & Under – 3.0 Division

SportMaster®
SPORT SURFACES



SportMaster®...
The Official Playing Surface of



SportMaster®
SPORT SURFACES

Call Today! (800) 395-7325

Visit us at www.sportmaster.net

2014 JUNIOR TOURNAMENTS



2014 SUMMER JR. SECTION CHAMPIONSHIPS

Patsy T. Mink Central Oahu Regional Park Tennis Complex
June 5 - 8, 2014

	Boys Singles Champions	Boys Singles Finalists	Boys Doubles Champions	Boys Doubles Finalists
12s:	Azuma Visaya	Robert Chang	Gabriel Kwock / Scott Yamamoto	Andrew Somerville / Azuma Visaya
14s:	Andre Ilagan	Shane Yee	Andre Ilagan / Kailuhia Lam	Leyton Ramos / Shane Yee
16:	Sage Leaman	Phuc Huynh	Jace Akagi Okuma / Seann Esaki	Jordan Azuma / Jaryd Ma
18s:	Kawika Lam	Gregory Zukeran	Brandan Bersola / Kawika Lam	McKenna Fujitani / Jeffrey Liang
	Girls Singles Champions	Girls Singles Finalists	Girls Doubles Champions	Girls Doubles Finalists
12s:	Sabrina Loui	Maile Brillhante	Maile Brillhante / Sabrina Loui	Anna Kalabukhova / Asiya Sharipova
14s:	Katreina Corpuz	Casey Cummings	Betsy Wo / Tayvia Yamagata	Clarise Huang / Xiao Yi Wang Beckvall
16:	Taylor Lau	Sara Tsukamoto	Alyssia Fossorier / Emily Soares	Katreina Corpuz / Taylor Lau
18s:	Sarah Dvorak	Alyssa Tobita	Skyla Alcon / Ashley Ishimura	Katie Kim / Alyssa Tobita



2014 USTA NATIONAL SELECTION TOURNAMENT

Patsy T. Mink Central Oahu Regional Park Tennis Complex
October 10 - 13, 2014

Boys 18 Singles Champion:	Lane Leschly
Boys 18 Singles Finalist:	Robert Seby
Boys 18 Doubles Champions:	Lane Leschly / Brandon holt
Boys 18 Doubles Finalists:	Daniel Gealer / Robert Seby
Girls 18 Singles Champion:	Ena Shibahara
Girls 18 Singles Finalist:	Bess Waldram
Girls 18 Doubles Champions:	Ena Shibahara / Bess Waldram
Girls 18 Doubles Finalists:	Katie Chang / Annette Goulak



Finalist, Robert Seby (left) and
Champion Lane Leschly (right)

2014 ROYAL LAHAINA CHALLENGER



2014 ROYAL LAHAINA CHALLENGER

Royal Lahaina Tennis Ranch | Lahaina, Hawaii
January 19 - 26, 2014

The 2014 Royal Lahaina Challenger, played at the Royal Lahaina Tennis Ranch had a great showing of world-class tennis. Players from countries across the world competed at this \$50,000 USTA Pro Circuit tournament. The USTA Hawaii Pacific Section is the only section in the nation to host and fully run a Pro Circuit event. The seven-day tournament had draws for both Singles and Doubles and is Hawaii's only men's professional tennis event. Title sponsor, American Savings Bank, has been the top-level sponsor for the past five years and continues to be a supportive partner of the tournament.

Thanks to the sponsorship from Kahiau: A Tennis Foundation, the tournament also saw huge success in its School's Day, where over 100 kids took a field trip to the Challenger and got to learn tennis from some of the competing pros as well as spend some time for Q&A. This was a prime example of bringing School's Tennis to its highest excellence.

Coverage of the event was ever present, with daily stories in the Maui News, stories in the Honolulu Star Advertiser, Maui Now, Tennis World, the ATP, and even ESPN. The tournament had successful promotion through various radio, print, and television sources. The event was also covered via live web streaming so that anyone across the world who has access to Internet could view the event. Analytics showed over 65,000 unique viewers who watched the online streaming.

Bradley Klahn, No. 93 player in the ATP world rankings, beat Tsung-Hua Yang 6-2, 6-3 for the title in the Royal Lahaina Challenger at the Royal Lahaina Tennis Ranch in front of about 500 fans at the stadium court. Klahn finished off Yang, a former doubles partner, in 57 minutes, and won \$7,200 of the \$50,000 purse. Yang, ranked 274th, beat fourth-seeded Jack Sock in the opening round and second-seeded Tim Smyczek in the semifinals, after a three-set quarterfinal. He won \$4,240. Klahn did not lose a set in singles in the event.



Bradley Klahn - Singles Champion (left),
Tsung-Hua Yang - Singles Finalist (right)

Bradley Klahn
2014 Singles Champion

Denis Kudla & Yasutaka Uchiyama
2014 Doubles Champions

Tsung-Hua Yang
2014 Singles Finalist

Daniel Kosakowski & Nicolas Meister
2014 Doubles Finalists

Maui's Fun Food People

Full-Service Catering

Platters

Boat Catering

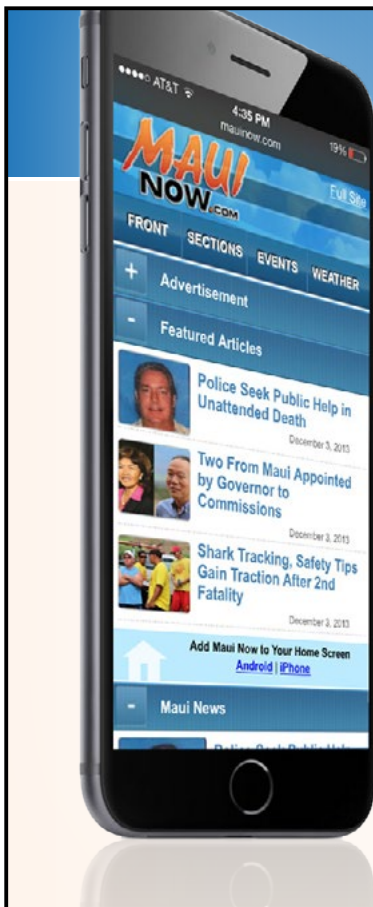
Private Chef

Dinners, large and small, simple to elegant
Party Facilitation



Serving satisfied customers on
Maui for over 20 years.

btfinch@hawaiiintel.net
www.baysidecateringmaui.com



MAUI'S #1

NEWS & INFORMATION WEBSITE

- 24/7 LOCAL NEWS COVERAGE
- DAILY WEATHER REPORTS BY MALIKA DUDLEY
- SURF REPORTS & LOCAL SPORTS COVERAGE
- MAUI ACTIVITIES & DINING GUIDES
- SHOPPING, ARTS & ENTERTAINMENT & MORE

FOR FREE ACCESS VISIT

MAUINOW.COM

facebook

Like Us to Join Our Facebook News Feed



Our mission as a 501 (c)(3) non-profit organization is to promote the growth of tennis in Hawaii.



For more information:
kahiautennis.usta.com



DRUMS of the Pacific LU'AU

MAUI'S MOST EXCITING LUAU!

Enjoy authentic Polynesian songs and dances, including the amazing Samoan Fire-Knife Dance, as you feast under the stars on an all-you-can-eat buffet of traditional island cuisine and tropical drinks.

FREE GIFT when booking online at drumsofthepacificmaui.com with Special Offer Code TENNIS.
Or call Hyatt Concierge at 808.667.4727.

HYATT REGENCY MAUI RESORT & SPA *Offer available online only.*

MORE SAVINGS. MORE LATTES.



KALO CHECKINGSM PLUS | DELUXE

- No Statement Savings account monthly service fee
 - ATM fee rebate*
- Discounted loan rates†

Come talk to us.

Member FDIC

asbhawaii.com



*Withdraw cash from any non-ASB ATM within the U.S. and receive a withdrawal fee rebate of up to \$8 per monthly statement period for Kalo PlusSM (\$12 for Kalo DeluxeSM).

†Subject to credit approval. For variable rate products, discount is subject to the floor rate. Discount available on new loans/lines applied for after establishing Kalo PlusSM or Kalo DeluxeSM Checking account and on non-promotional rates only. Contact a branch for additional details.



HAWAII PACIFIC