

# Thornton Tomasetti

Building Solutions

## Property Loss Consulting



## Property Loss Consulting

Our Property Loss Consulting practice serves insurance companies and their representative attorneys and adjusters in evaluating the scope and nature of losses related to natural and man-made events. We provide critical information that helps our insurance clients make informed decisions regarding property and casualty, construction defect, builders' risk, surety and liability claims.

Operating internationally, our multidisciplinary team offers a streamlined, single-source solution. Structural and MEP engineers, architects, building skin experts and sustainability specialists provide comprehensive, coordinated services. Working with our strategic partner, Hardesty & Hanover, we also evaluate long-span and movable structures, bridges and highway and rail projects.

The core of our practice is scope of damage determination: investigating, documenting, analyzing, and determining the extent and severity of property damage occurring from covered-loss events.

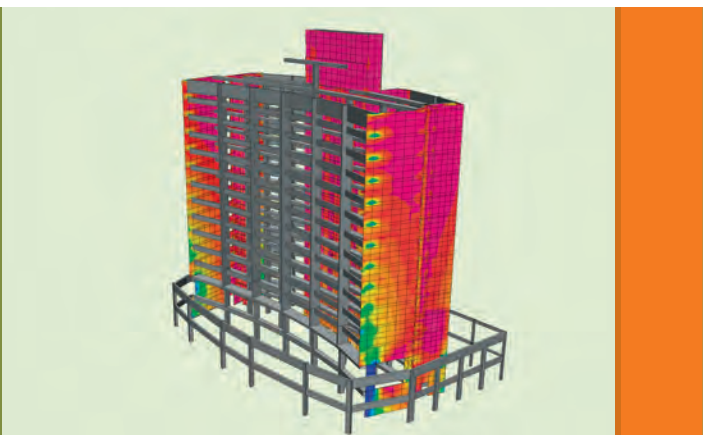
Our forensic teams determine the cause and origin of property damage, ranging from water infiltration to catastrophic failure. We investigate

damage and provide solid answers to complex questions, help define the issues and, if necessary, offer litigation support and expert witness testimony.

Our building code consulting services are informed by an understanding of local, regional and international building codes gained through our experience as design professionals. We provide independent evaluation of code requirements and recommendations for achieving compliance.

The rapidly growing class of environmentally sensitive "green" buildings brings a new set of issues to property loss activities. Our knowledge of sustainable design and the LEED rating system enables us to consult on all technical aspects during the claims adjustment process.

The goal of multihazard risk assessment is to evaluate and mitigate risk related to specific structures or a portfolio of properties. Our due diligence surveys evaluate and quantify potential damage resulting from hurricanes, tornados, earthquakes, floods, blasts and other hazards.



*Tornado damage in Joplin, Missouri (left); ETABS model used to analyze the post-earthquake condition of a hotel in Christchurch, New Zealand (right).*

## Scope of Damage Determination

Property Damage Assessment & Documentation  
Repair/Replacement Recommendations

## Cause & Origin Investigation

Inadequate Performance  
Failure/Collapse Analysis  
Covered-Loss Assessment

## Building Code Evaluation

Requisite Code Compliance Consulting  
Event-Driven Code Compliance Consulting

## Sustainability Claims Consulting

LEED Evaluation & Compliance  
Upgrade Analysis

## Litigation Support Services

Expert Witness Reports & Testimony  
Forensic Information Modeling (FIM)  
Demonstrative Evidence Presentations

## Multihazard Risk Assessment

Probable Maximum Loss Studies  
Vulnerability Assessments  
Mitigation Studies



*Images, from top: Damage assessment at a Joplin, Missouri office building following a series of tornadoes; evaluation of earthquake damage and emergency stabilization at a hotel in Christchurch, New Zealand; fire damage to a physical plant in Chicago, Illinois; damage assessment following an earthquake in Haiti.*

## Firm Overview

### Practice Areas

#### Building Structure

#### Building Skin

#### Building Performance

#### Property Loss Consulting

#### Construction Support Services

#### Building Sustainability

**Thornton Tomasetti** provides engineering design, investigation and analysis services to clients worldwide on projects of every size and level of complexity. Our six integrated practices address the full life cycle of structures.

Founded in 1956, today Thornton Tomasetti is a 600-person organization of engineers and architects collaborating from offices across the United States and in Asia-Pacific, Europe and the Middle East.

**To report a claim, you can reach us 24 hours a day:**

United States, Canada, Mexico: +1.877.993.9737

Australia: 0011.800.1504.1505

Brazil: 0021.800.1504.1505

France, Germany, Ireland,

Italy, Spain, Switzerland,

United Kingdom, New Zealand: 00.800.1504.1505

[plc@ThorntonTomasetti.com](mailto:plc@ThorntonTomasetti.com)

**To learn more about our Property Loss Consulting Practice:**

[www.ThorntonTomasetti.com/property\\_loss\\_consulting](http://www.ThorntonTomasetti.com/property_loss_consulting)

*Cover: Investigation of a snow related stadium roof collapse in Minnesota (left); damage assessment following Hurricane Ike on the U.S. Gulf Coast (right).*

