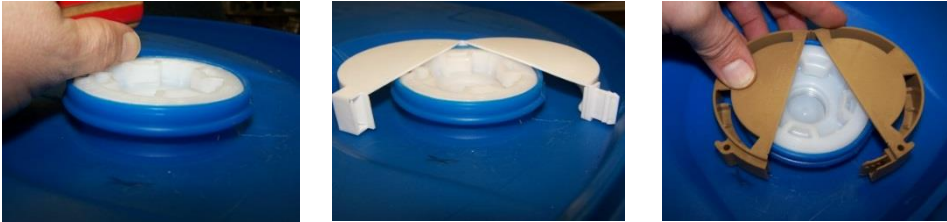


APPLICATION OF THE CLICKLOCK™ TAMPER EVIDENT CAP Guide Lines

APPLICATION INSTRUCTIONS

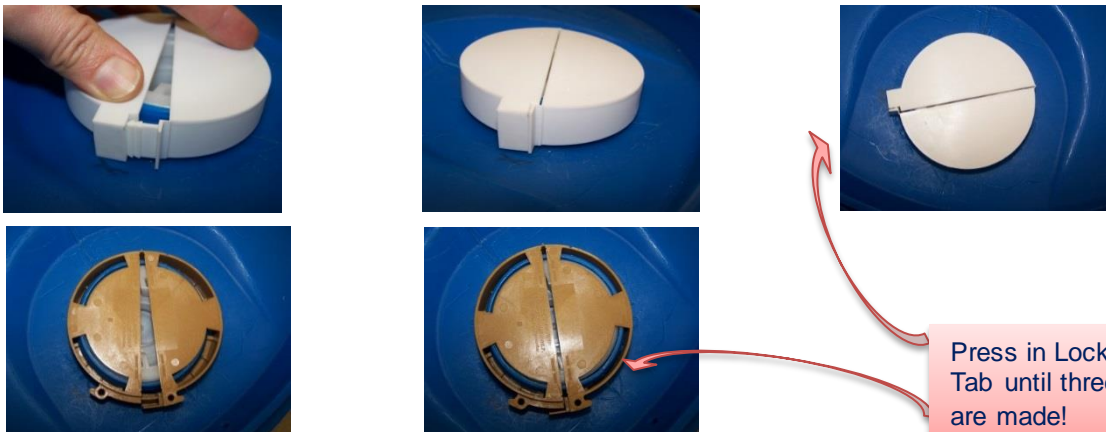
- 1) Bend the ClickLock™ Cap at the hinge and wrap the cap around the neck of the drum which contains the plug.



- 2) Bend the short locking tab, which extends on one side of the cap, and direct it towards the cap's other half containing a mating bracket slot.



- 3) Insert the locking tab of one half into the mating bracket slot of the other half. Push the two halves together.



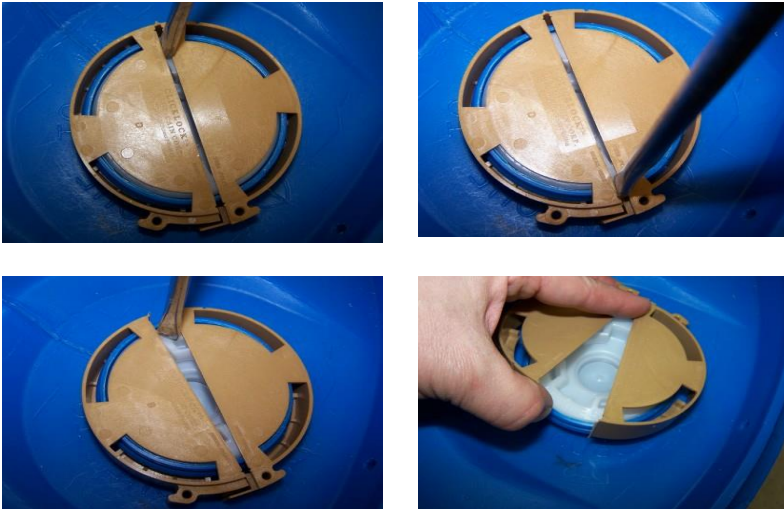
Press in Locking
Tab until three clicks
are made!

To REMOVE cap:

- 1) Insert a screwdriver in the gap between the halves and twist until the hinge breaks the cap and separates the cap halves.
- 2) Remove the cap from the drum neck.



Break at hinge location



Remove Cap from drum!