

Block 37

Presented by:

Block 37 Team

Media Tower/ 108 N. State

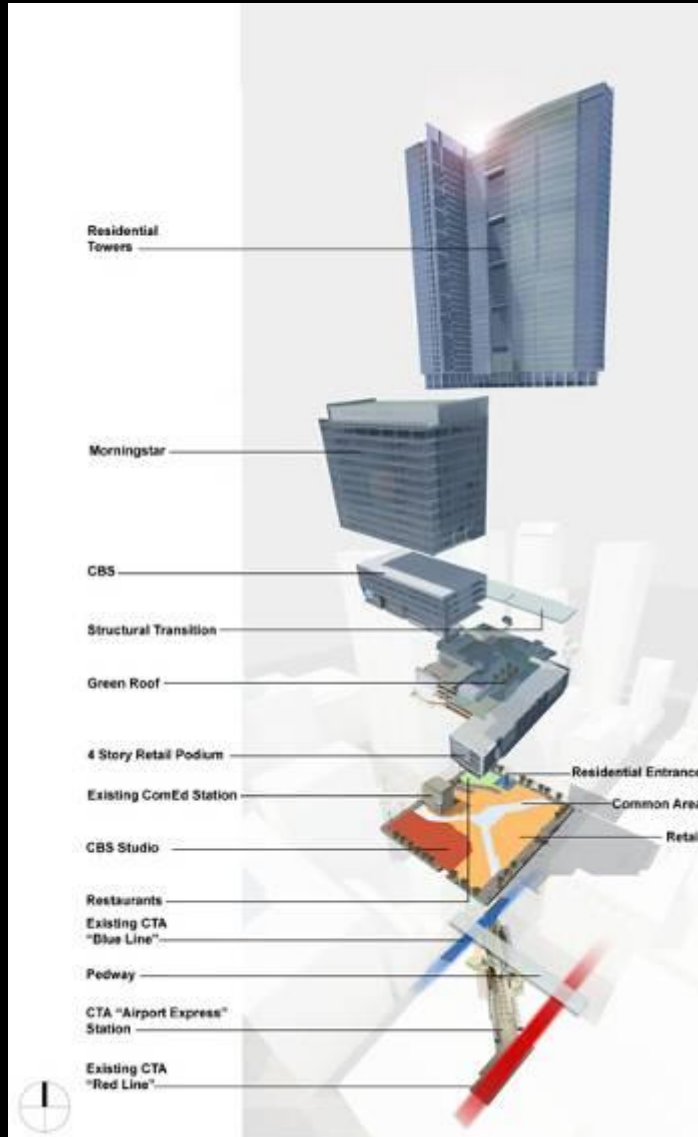
June 14, 2007

Project Details

Mixed-Use Development

- Retail Podium
- Media/Office Tower
- Future Residential Tower
- Below Grade Parking and Loading Dock
- CTA Subway Station

Building Components



108 North State Street (Block 37)

Chicago, IL



**Media/Office
Tower**



**Residential
Tower**

**Retail
Podium**



Thornton Tomasetti

The Old Block 37



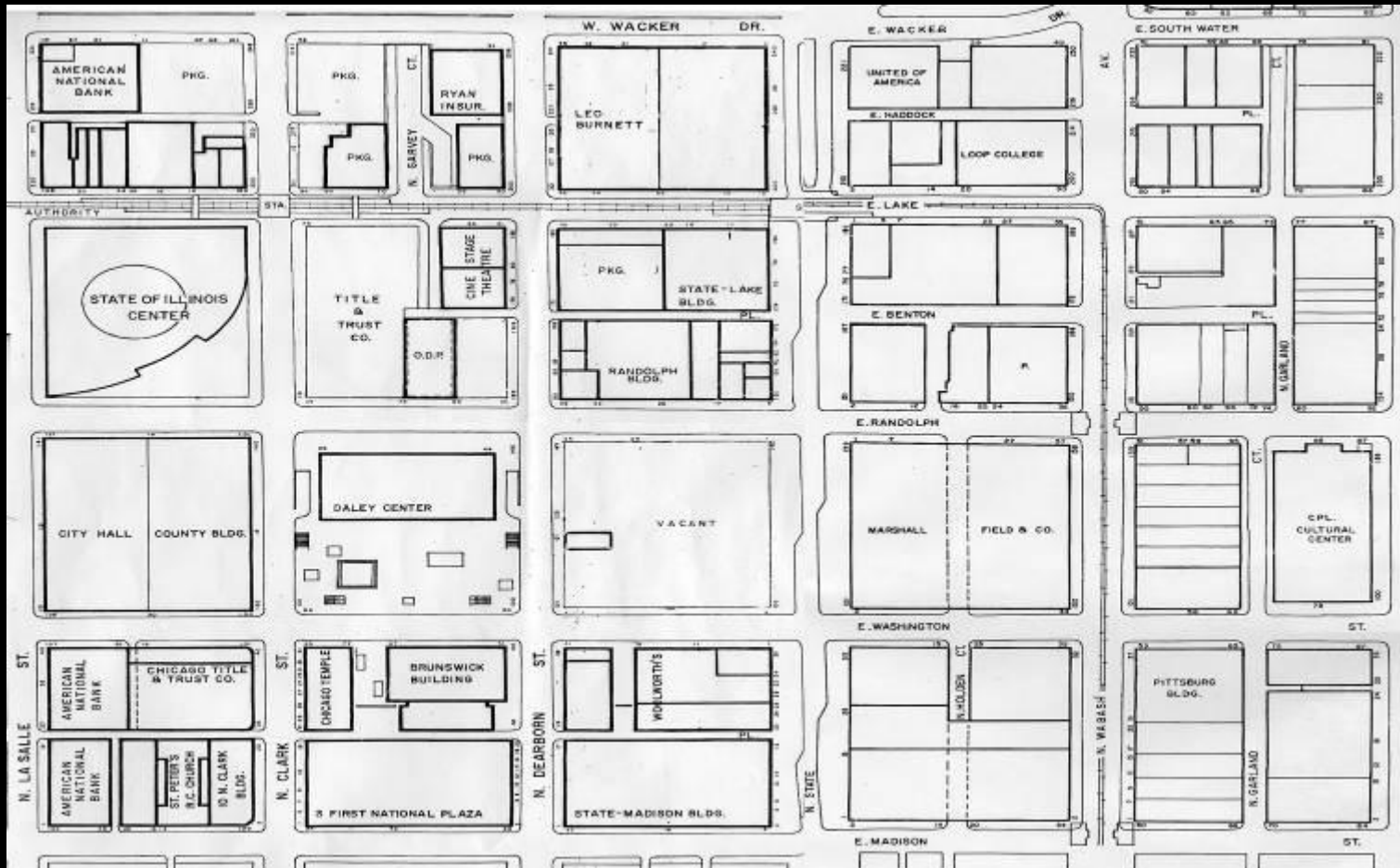
- View from State Street

The New Block 37



- View from State Street

Site Plan



Plan

Structure

Occupies Entire City Block

- **Basement Provides link between active Blue and Red lines**
- **50' deep excavation for retail area**
- **17 Story Media Tower, CBS moving in now!**
- **Retail building designed for future 40 story tower**
- **Retail building designed for upcoming new CTA express train to airports**
 - **New CTA line dictated column layout**

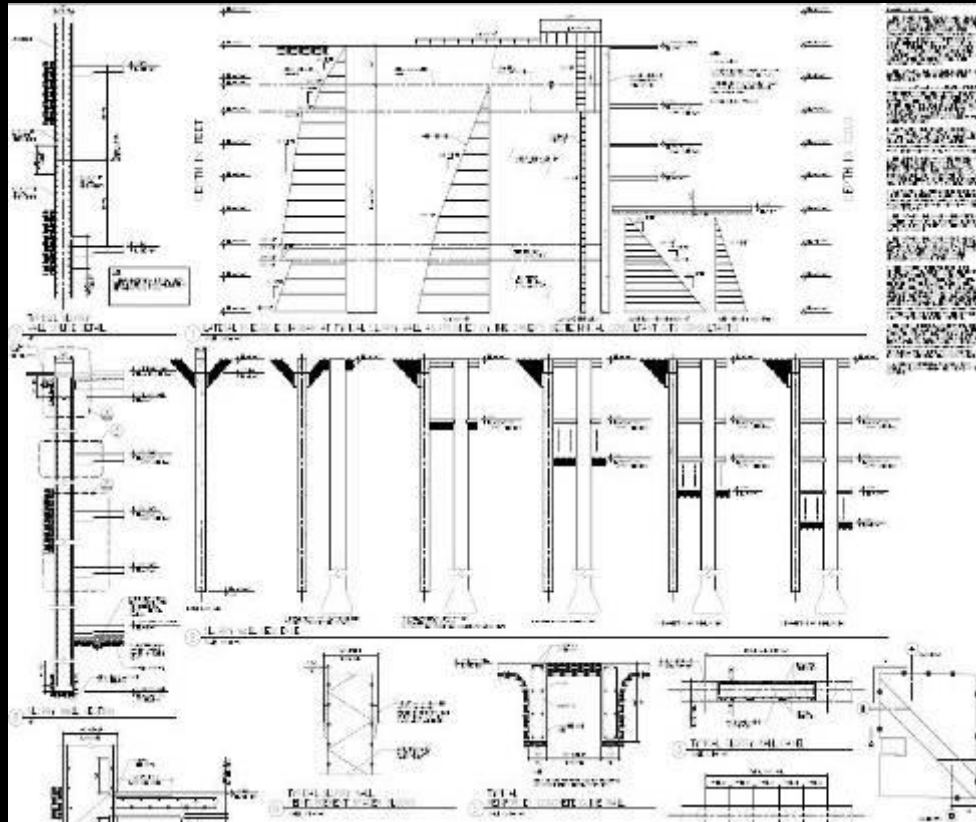
Extremely Busy Job Site!



- Many Different Working Trades at Once

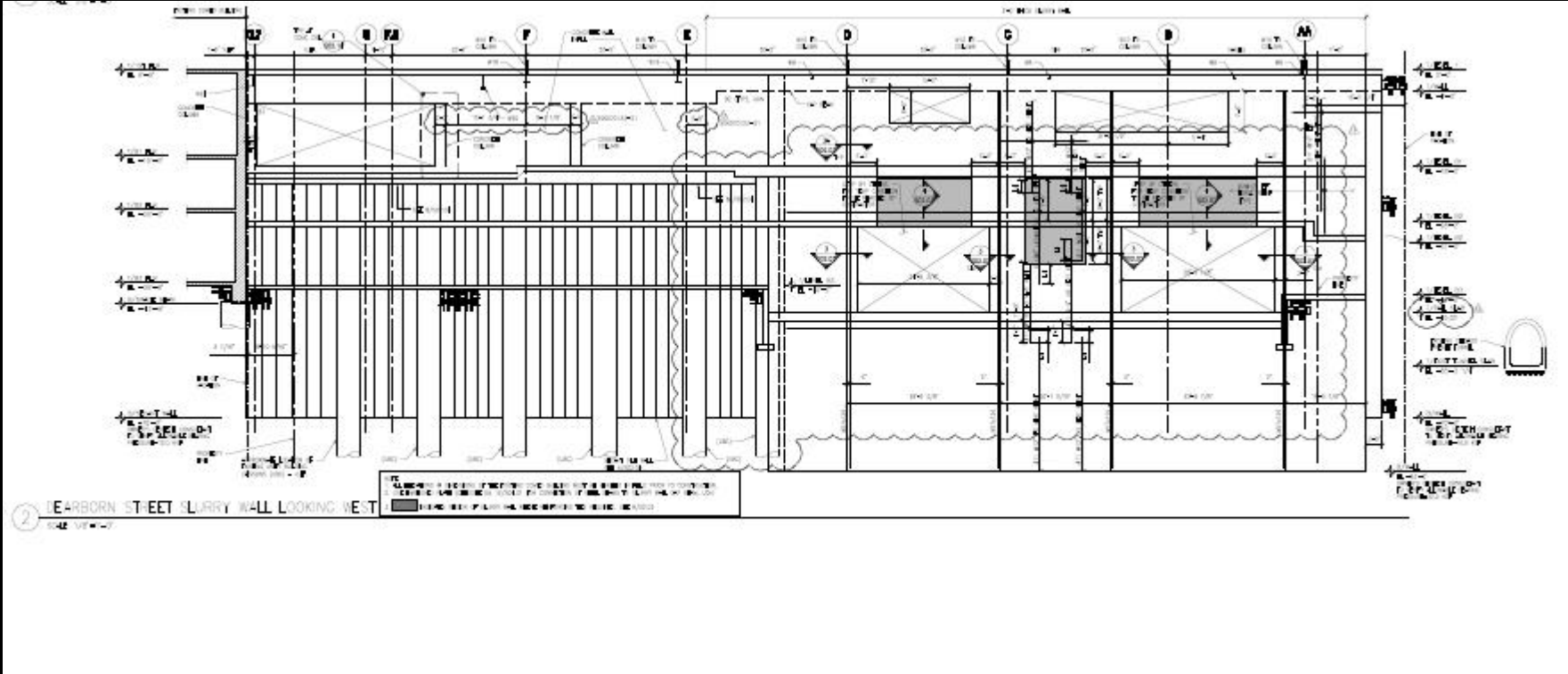
Thornton Tomasetti

Structure



- **Top-Down Sequence for Slurry Wall**

Slurry / Secant Pile Wall Elevation



Slurry Wall Construction



Thornton Tomasetti

Slurry Wall



- **Slurry Wall Rebar Cage**
 - **Ready to be Lowered Into Slurry**

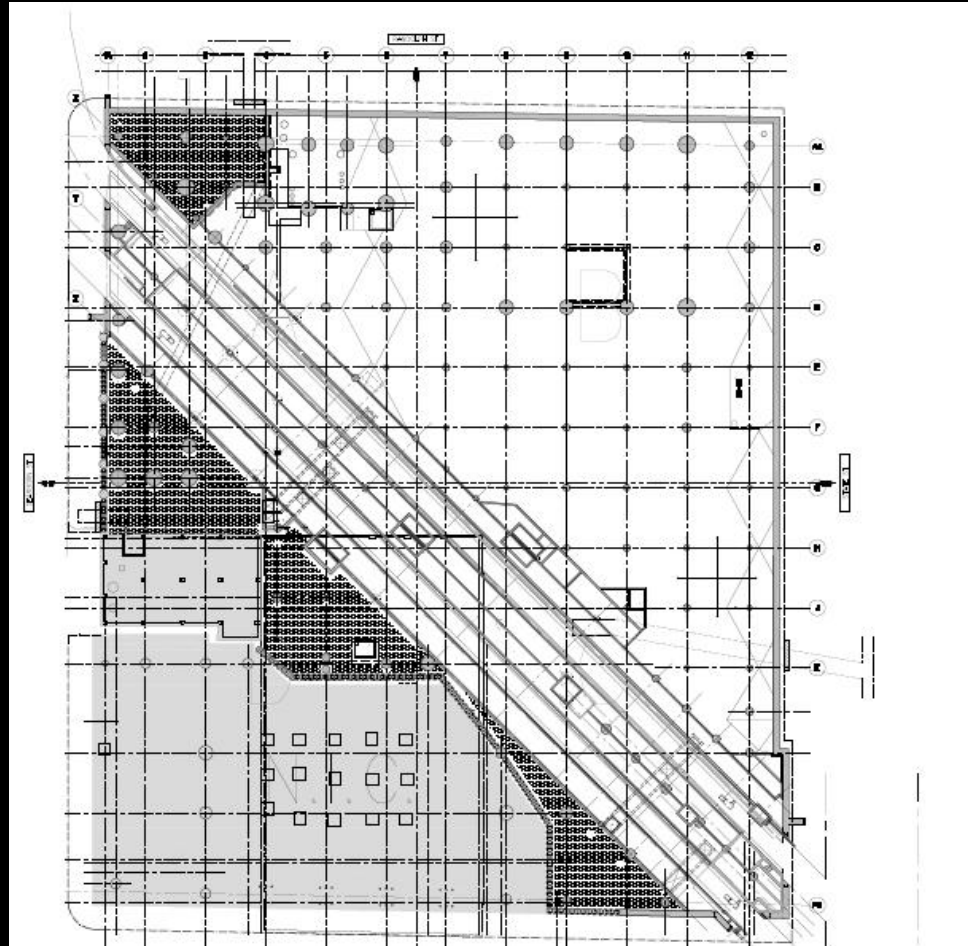
Thornton **Tomasetti**

Secant Pile Wall



- An Alternative to Slurry Wall
- Provides More Stiffness but More Costly

Structure



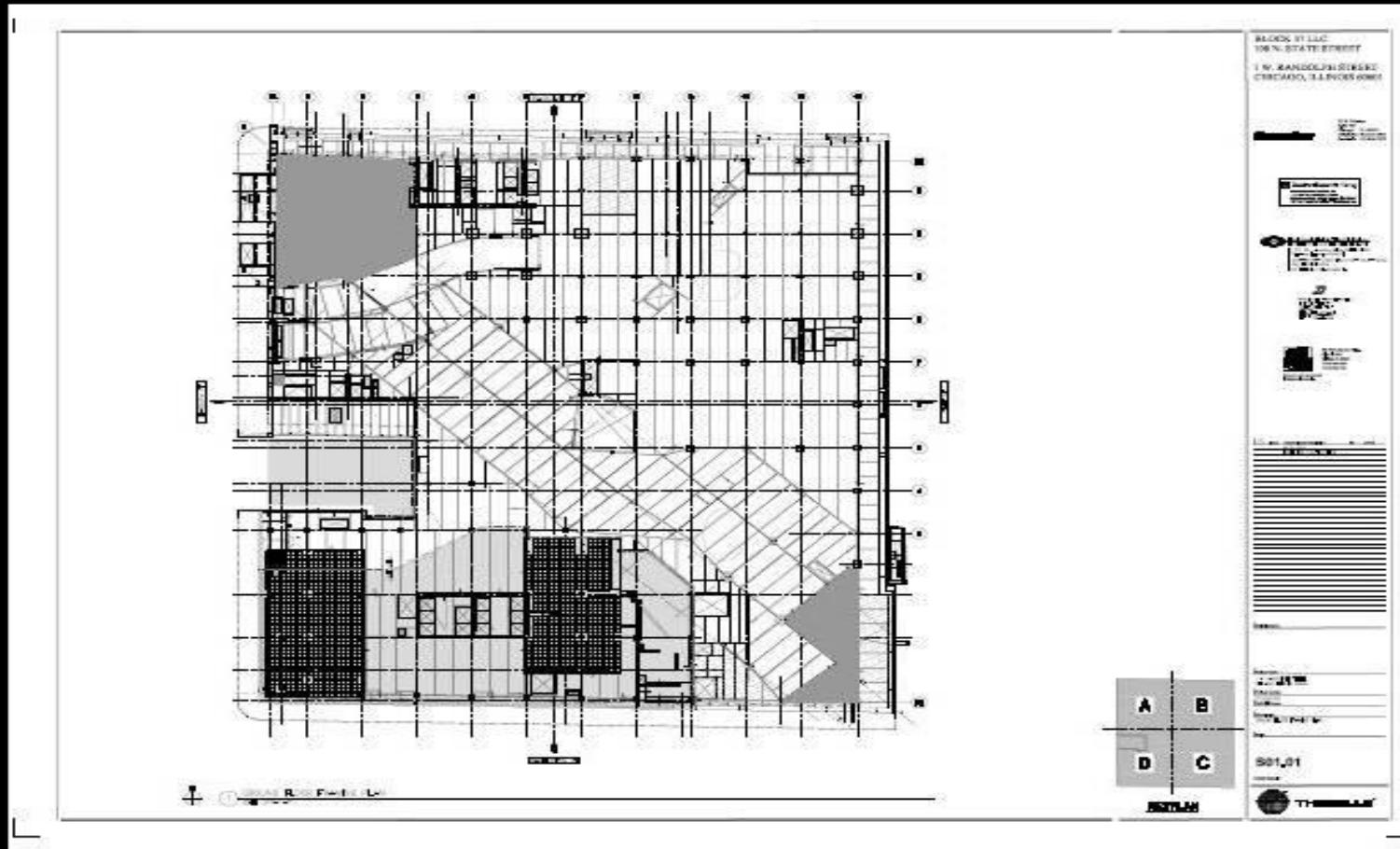
- Track Level

Drop-In Columns



Thornton Tomasetti

Structure



- First Floor Plan

Steel Framing



- Level 1 Steel Braces Slurry Wall for Excavation

Thornton Tomasetti

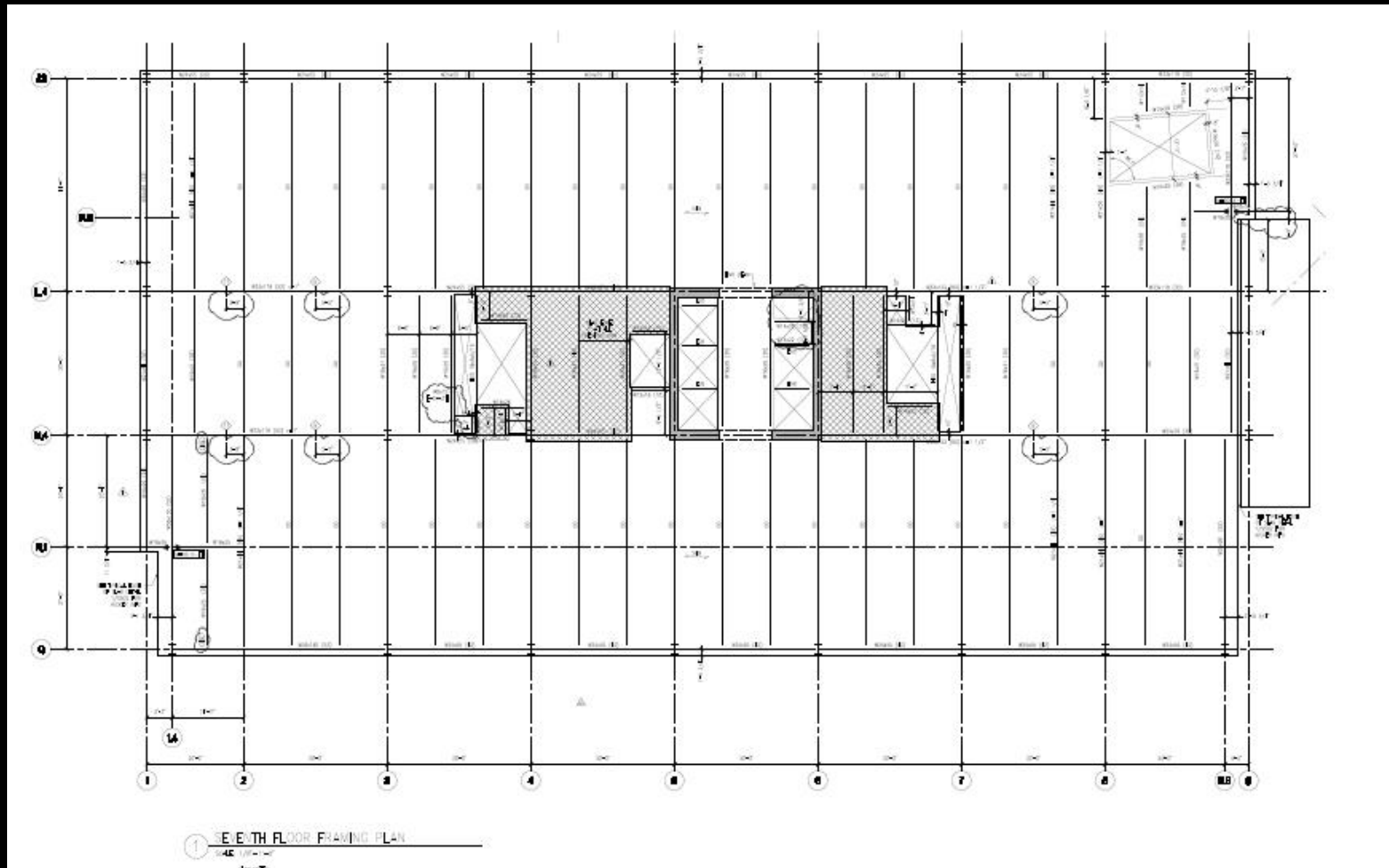
Steel Framing



- Up-Down Construction Begins
- Levels 1, 2, and 3 Partially Completed

Thornton Tomasetti

Media Tower



- Concrete Core with Steel Framing
- Construction Method Perfected by Our Office's Founder, Mr. Eli Cohen

Thornton Tomasetti

Media Tower

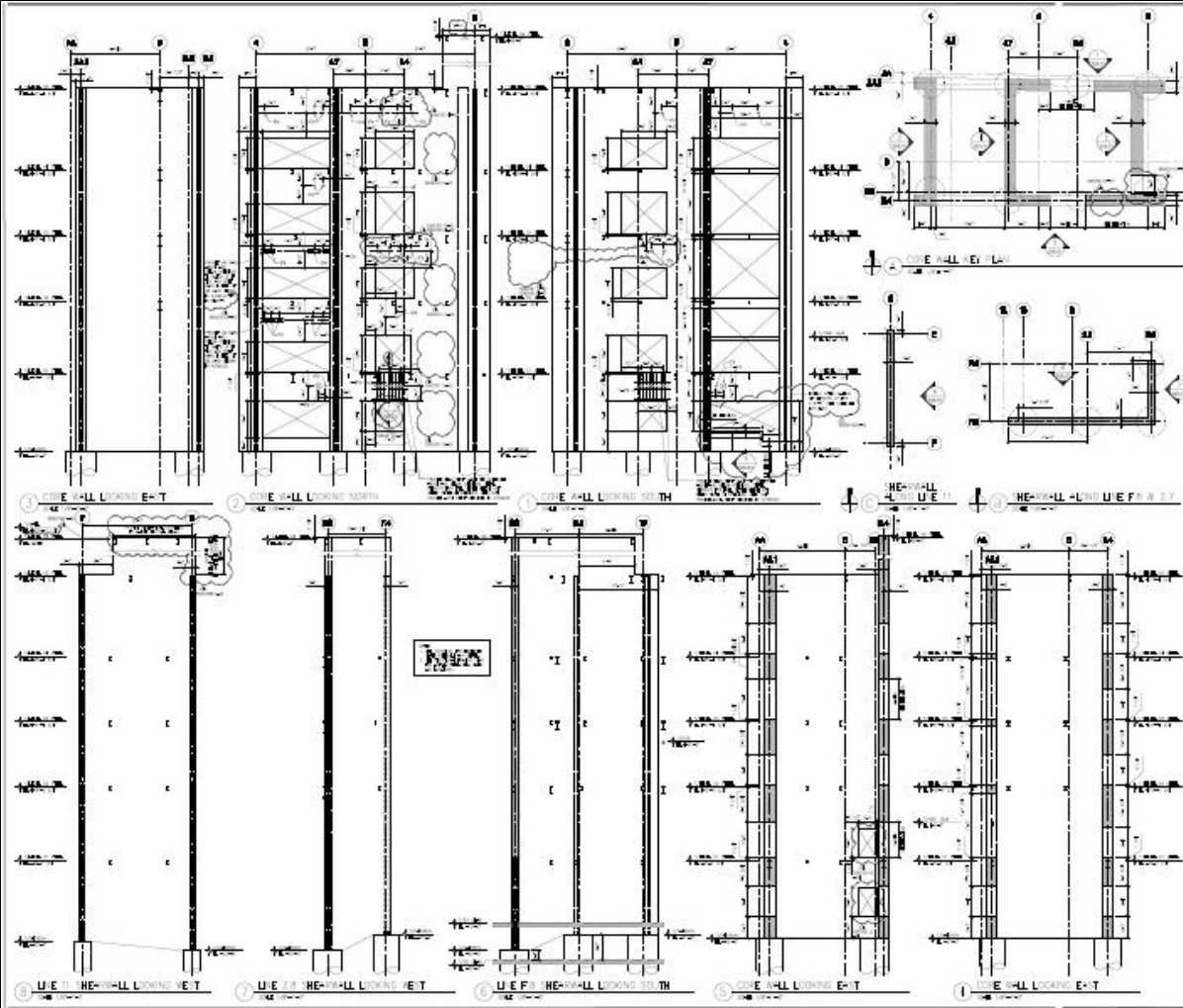


Thornton Tomasetti

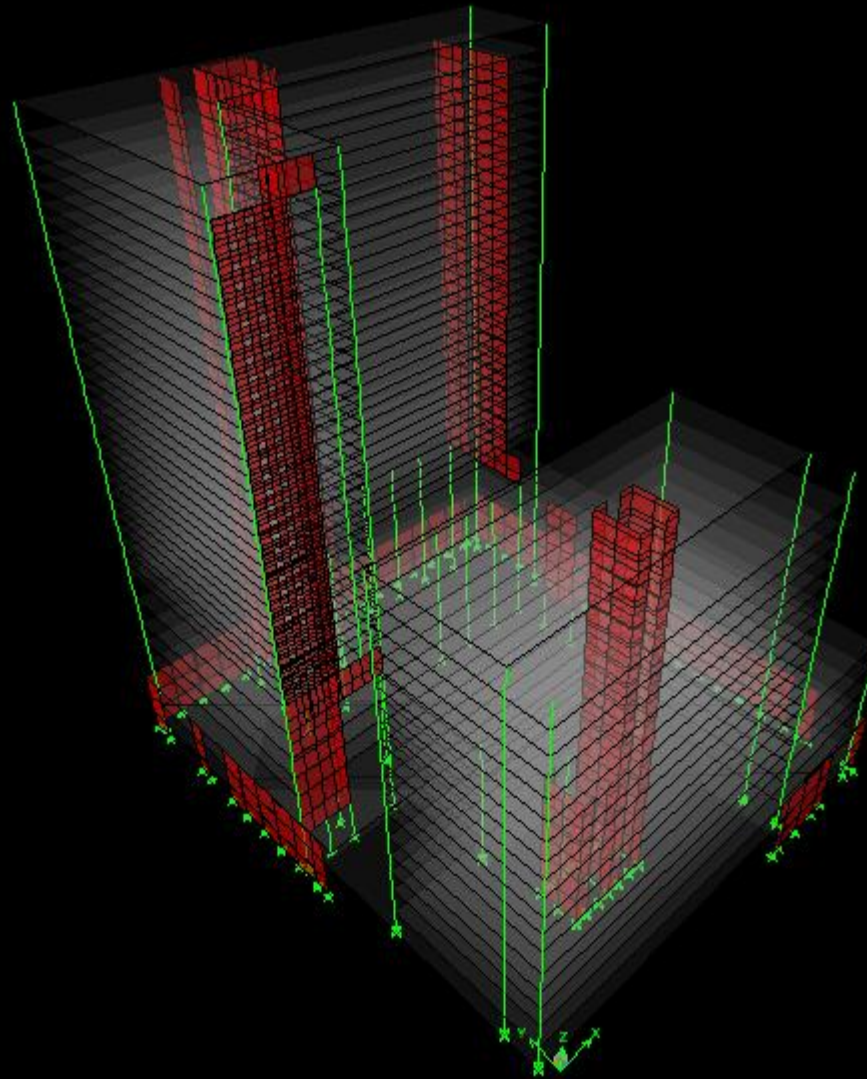
Lateral System

- **Concrete Shear Walls**
- **Diaphragms at Base Share Stiffness
Between Media Tower and Retail**
- **Analyzed with Etabs**

Shear Walls

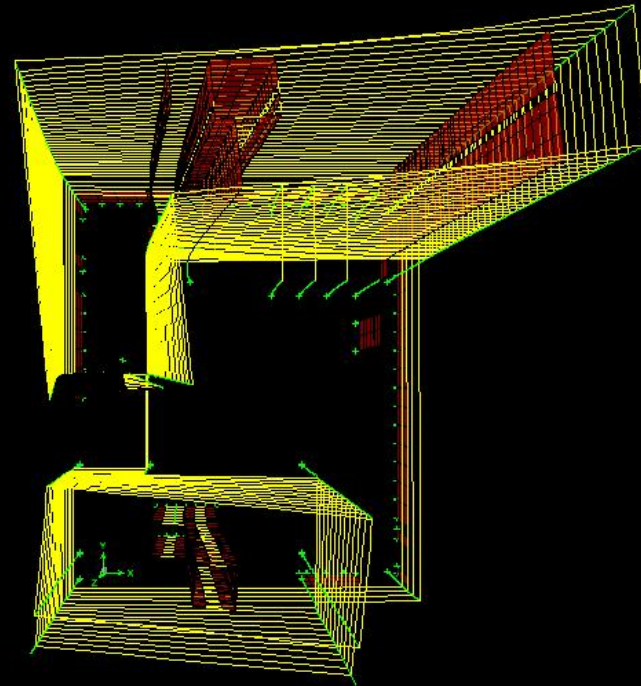
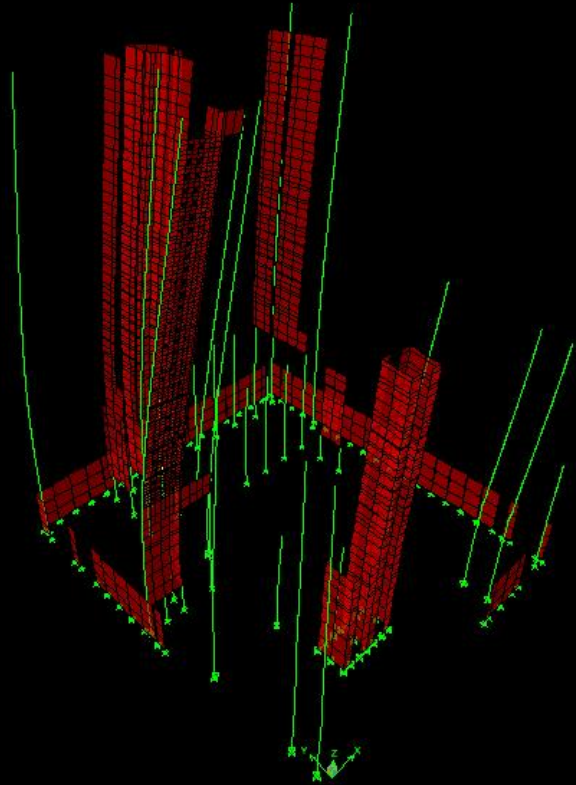


Lateral System



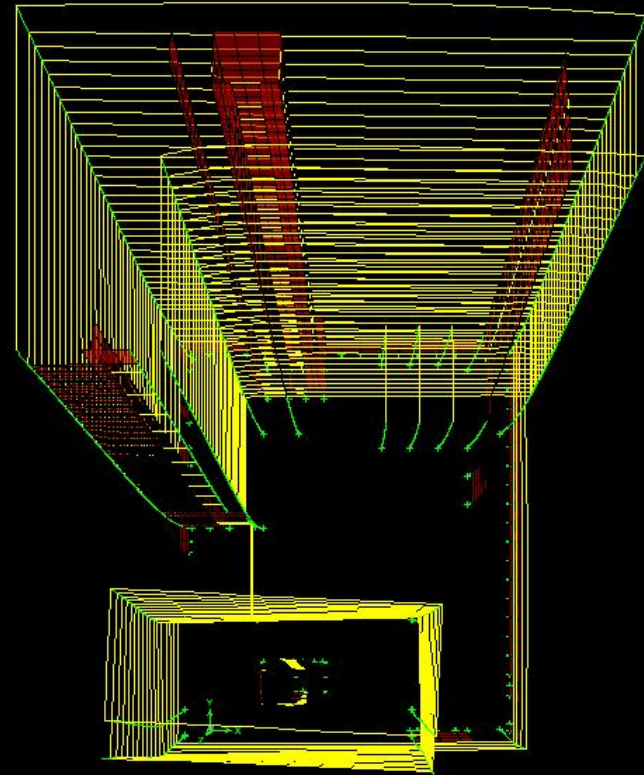
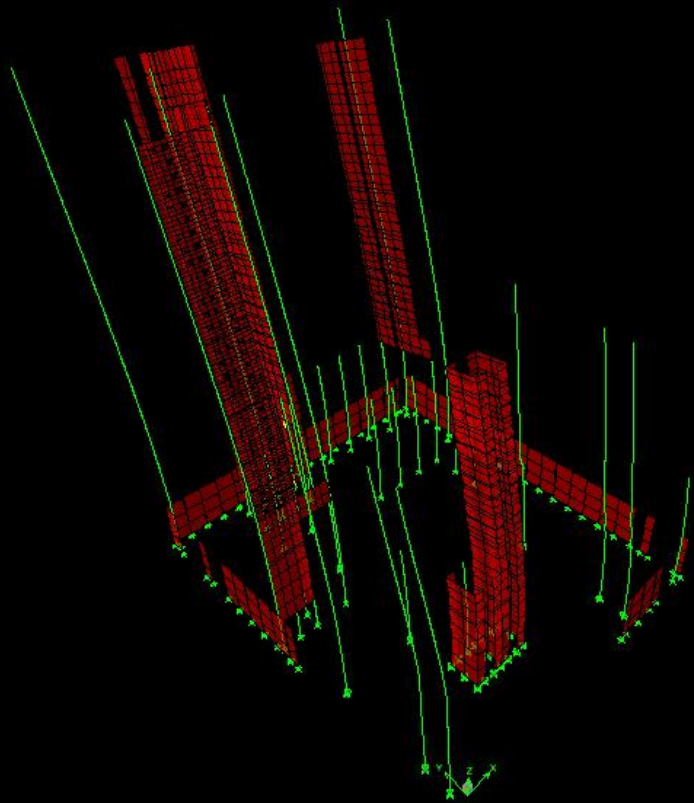
- **Etabs Analysis**

Lateral System



- Wind – East / West

Lateral System



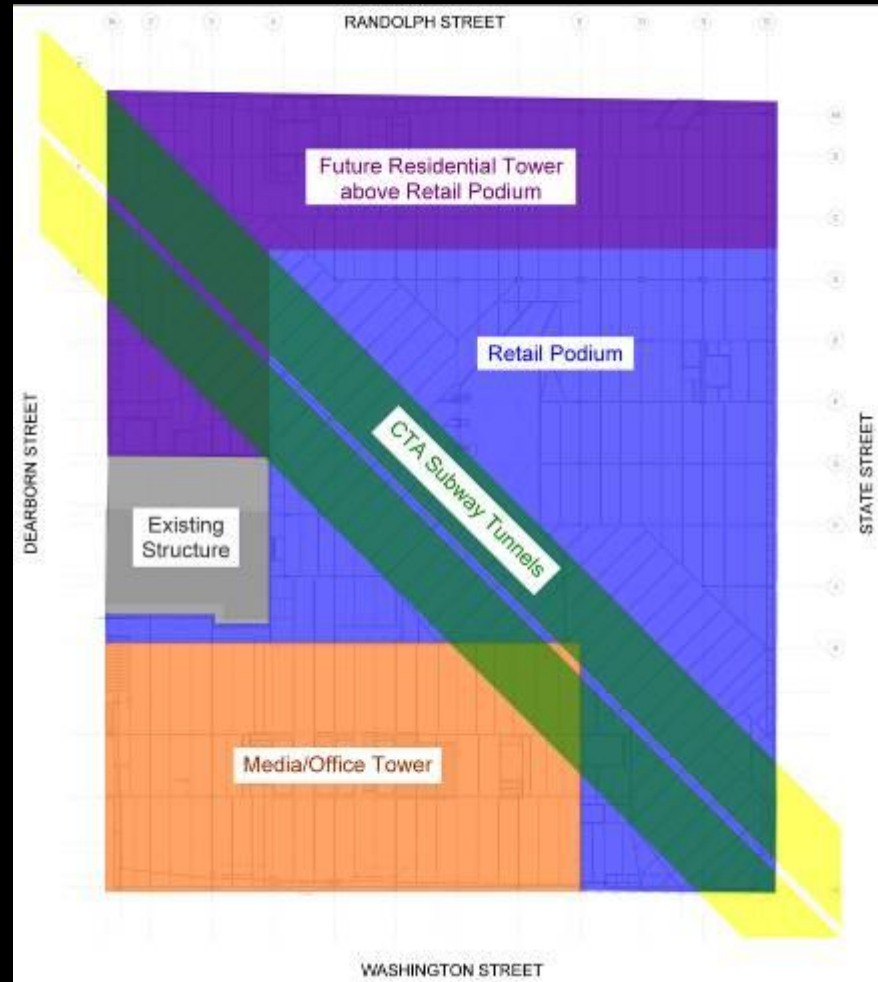
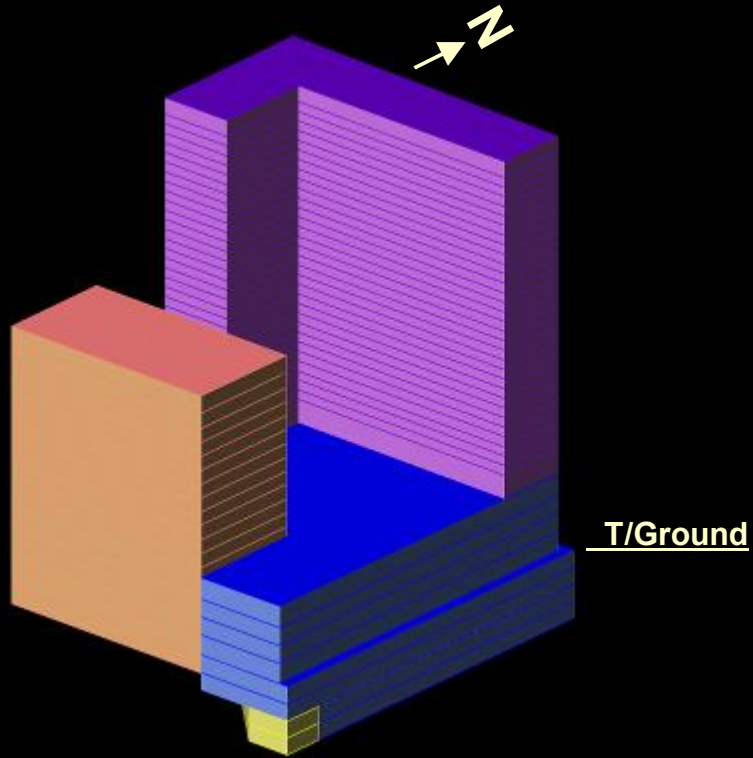
- Wind – North / South

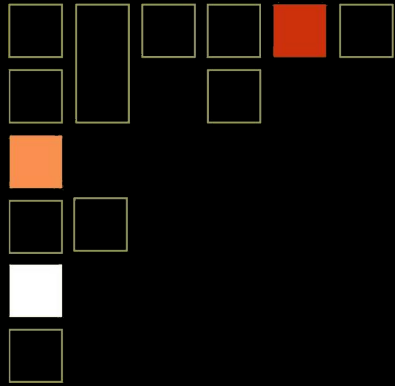
Lateral System

- **Media Tower Core – Traditional Construction**
 - **Core Built Several Stories Ahead of Steel Floor Framing**

- **Retail Core – Up-Down Construction**
 - **Steel Framing Advancing as Core Wall Built Up from B1**

Project Massing - BIM





Thank you