

# Watch Sale Catalog

**Rolex, Panerai, Bell & Ross, Patek  
Philippe, Cartier, Breitling and more!**

**New and Pre-Owned. 1 year warranty on  
all watches.**



CWS Marketing Group

**To purchase now contact Bill Stearman at  
[cwstearman@aol.com](mailto:cwstearman@aol.com) or 1-317 844-4270 ext. 201**

All of the watches are authentic and either pre-owned or new. Offered by Authorized Dealers and members of the International Watch and Jewelry Guild (IWJG). Many pieces come in original boxes with papers. No watches are replicas.

# Sale Catalog

## Lot 1 - Breitling stainless steel and 18K yellow gold Breitling J Class chronograph 40mm round quartz

- Black dial with an 18K yellow gold bezel, sapphire crystal, strap black crocodile with a copilot.
- Box/Papers - No
- SN: 5454
- Model: D53067
- Circa 1990's.
- Estimated Value: 2,000-3,000 US

**SOLD**



## Lot 2 - Rolex Submariner 16613 Y Series (Circa 2002) - Two-Tone 18k Yellow Gold/Stainless Steel

- Box/Papers - No
- SN: Y286578
- Movement Type: Automatic - Chronometer Certified
- Uni-directional Professional Diver's Bezel
- Diver's Watch
- Water Resistant
- Automatic Time and Date
- Dial Description: Blue dial with luminescent 18k yellow gold outlined hour/minute hands and hour markers, 18k yellow gold sweeping seconds hand with luminescent pointer, magnified date window at 3 o'clock
- Bezel: 18k Yellow Gold and Blue Inlay Bezel - Uni-directional Professional Diver's Bezel
- Case Size/Details: 40mm/ 40mm Stainless Steel
- Case Metal: Two-Tone 18k / SS
- Band: stainless steel and 18 K yellow gold bracelet
- Estimated Value: 7,000- 11,000 US

**SOLD**



## Lot 3 - Omega Vintage Flightmaster Chronograph 145.013

- SN: 33311045
- Movement: Original Omega Manual Winding Movement
- Case: Original Omega SS 'Pilot' Shaped Case 43.0 X 52.0 Mm. Screwed Down Back . Omega Logo with Jet Engraving
- Crystal: Acrylic Crystal.
- Dial: Original Omega Grey Matte Dial. Luminous Hour Markers and Hands. 24h (AM in Black and PM in Black) Counter at 9 O'clock, 12 Hour Counter At 6 O'clock And 30 Minute Counter At 3 O'clock. "0-60" Scale Inner Rotating Bezel.
- Band: Original SS Omega Bracelet with Fold Over Clasp.
- Circa 1970's
- No Box and Papers
- Estimated Value 3,000-4000 US



---

#### Lot 4 - Rolex Yacht-Master 16623 - D Series - 40mm Two-Tone Stainless Steel/18k

- Movement Type: Automatic Watch
- Features: Automatic
- Bi-directional Bezel
- Date
- Chronometer Certified
- Water Resistant
- Dial Description: Blue Dial
- Bezel: 18k Yellow Gold Bi-directional Bezel
- Case Size: 40mm
- Case Metal: Stainless Steel
- Caseback: Solid Caseback
- Circa: 2005
- Pre-owned LNIB
- Box and Papers
- Estimated Value: 7,500 - 9,500 USD

**SOLD**



---

#### Lot 5 - Men's Rolex Datejust Watch 116233

- Box/Papers - No
- Series: V
- Circa 2001
- Movement Automatic
- Movement/Caliber 3135
- Power Reserve(h) 50 h
- No. of Jewels 31
- Case Material Steel
- Case Diameter 36.0 mm
- Thickness 11 mm
- Waterproof 100 m
- Glass Sapphire Glass
- Dial White
- Bracelet Color Steel/Gold
- Clasp Fold Clasp, hidden
- Pre-Owned Rolex Datejust 36mm watch, circa 2003-2009, polished round stainless steel case (36mm diameter, 11mm thickness) with 18kt yellow gold screw-down Triplock winding crown, polished fluted 18kt yellow gold bezel, adjustable stainless steel and 18kt yellow gold bracelet with solid links and hidden clasp, white dial set with 10 round diamond hour markers, date calendar at 3 o'clock, 31 jewel Caliber 3135 self-winding mechanical Oyster Perpetual COSC certified chronometer movement, scratch-resistant sapphire crystal, water-resistant to 100 meters (330 feet).
- Estimated Value 7,500 - 8,900 USD



# Sale Catalog

---

## Lot 6 - Rolex Oyster Perpetual Datejust

- Box/Papers - No
- Movement: Automatic
- Case Material: Steel
- Bracelet Material Steel
- Model # 16203
- SN: K993166
- Circa: 2001
- Case Diameter 36.0 mm
- Glass Sapphire Glass
- Dial: Roman Normal Champaign
- Bracelet Material 18Y Gold/Steel
- Estimated Value: 3,500-4,000 US

**SOLD**



---

## Lot 7 - Rolex Cellini Quarts Gold Watch

- Model # R66338
- SN: N375891
- Circa 1991
- Movement Quartz
- Box/Papers - Yes
- Case
- Dial White
- Dial Numerals Roman numerals
- Comments
- Rolex Cellini Watches., 18K yellow gold, quartz movement, white dial, Roman numerals
- Band: Gold Bracelet
- Estimated Value:



---

#### Lot 8 - Rolex Gents Yacht-Master 16623 M Series

- Series Yachtmaster
- Watch Style Luxury
- Movement Automatic
- Functions Hours/ Minutes /Seconds/ Date
- Case Material Stainless Steel
- Case Shape Round
- Case Diameter 40 mm
- Bezel Unidirectional Rotating
- Dial Color Grey
- Dial Type Analog
- Dial Markers Luminous Dots
- Hands Luminous
- Luminescent Hands and Dial Markers
- Bracelet 18kt Yellow Gold and Stainless Steel
- Clasp Deployment
- Bezel Material 18k Yellow Gold
- Calendar Date displays at the 3 o'clock position
- Water Resistant 100 meters/ 330 feet
- Crystal Sapphire
- Made In Swiss Made
- No Box and Papers
- Estimated Value: 8,000 - 9,500 USD

**SOLD**



---

#### Lot 9 - Rolex Datejust

- Box/Papers - No
- Model 16233
- SN: T789647
- Movement: Automatic
- Gender: Men's
- Case Size: 36mm (not including crown or lugs)
- Case Material: Stainless steel with 18k fluted bezel and crown
- Champagne index dial and sapphire crystal
- Attachments: Rolex 78363 18k and SS link jubilee bracelet with deployant buckle
- Circa 1995
- Estimated Value 2500-3500 US

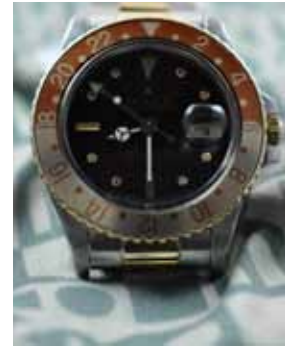
**SOLD**



# Sale Catalog

## Lot 10 - Rolex GMT Master - 16753 - Transitional-Vintage "Root Beer" Brown Nipple Dial - Tutone (18k Yellow Gold/SS) Circa 1985

- Features: Date, GMT
- Uni-directional Professional Diver's Bezel
- Diver's Watch
- Water Resistant
- Automatic
- Movement Details: Time, Date, Second Time Zone
- Dial Description: "Brown Nipple" Dial with luminescent 18k yellow gold hour/minute hands and markers, 18k yellow gold GMT second time zone hand. Magnified date display at 3 o'clock
- Bezel: Brown-Gold lacquered 18k yellow gold uni-directional professional rotating diver's bezel
- Case Size/Details: 40mm/40mm Tutone 18k yellow gold and stainless steel
- Case Metal: Tutone 18k / SS
- Caseback: Solid Stainless Steel
- Age: Pre-Owned - Circa 1980
- Strap/Bracelet: Rolex tutone 18k yellow gold and stainless steel oyster bracelet with Rolex stainless steel Oyster Flip-Lock buckle
- No Box or Papers
- Estimated Value: 4,500 - 6,000 USD



## Lot 13 - Tag Heuer Link Automatic Men's Wristwatch

- Box/Papers - No
- Model WJF211A
- SN #REF7249
- Series: Link Automatic
- Style (Gender): Men's
- Case Material: Stainless Steel
- Dial Color: Black
- Movement: Automatic
- Engine: Tag Heuer Caliber 6.
- Functions: Hour and Minute Hands, Second Subdial, Date at 6.
- Crystal Material: Anti-reflective Sapphire
- Case Diameter/Thickness: 40mm/11.0 mm
- Caseback: See through sapphire
- Bezel Material/Function: Stainless Steel/ Fixed
- Bezel Function: Water Resistance: 200m / 660ft (suitable for swimming, snorkeling, skin diving; unsuitable for diving unless noted)
- Crown Material: Screw Down,
- Calendar: Automatic Date at 6 o'clock
- Watch Bracelet / Strap Material: Stainless Steel
- Watch Clasp Material: Deployment
- Circa: 2008
- Estimated Value: 1,000 – 2,000 US



.....

### Lot 14 - Rolex Oyster Perpetual Datejust

- Box/Papers - No
- Circa: 1991
- SN: N110050
- Model # 15203
- Case Dimensions 41 mm (h) x 34 mm (w)
- Material Stainless Steel
- Crystal: Sapphire
- Bracelet/Strap: SS/G
- Gender Men's
- Movement Automatic
- Description: Men's Rolex Oyster Perpetual Date timepiece, reference 15203, features a round stainless steel case with 18k yellow gold bezel surrounds the white dial that houses the date display with trademark Cyclops lens. A pair of yellow gold and luminescent hands marks the perpetual automatic movement, which is shown through the applied gold stick indicators. Finishing this piece is the original Rolex stainless steel and 18k yellow gold Oyster bracelet and stainless steel folding clasp.
- Estimated Value: 3,500 – 4,500 US

**SOLD**



.....

### Lot 15 - Baume & Mercier

- SN # 653353
- Model # 5301352
- Series: Capeland Sport
- Style: Men's
- Box/Paper - Yes
- Case Material: Stainless Steel
- Dial: Black stick dial rotating bezel
- Movement: Automatic Mechanical
- Functions: Hours, Minutes, Small Seconds, Date
- Crystal Material: Sapphire, Scratch Resistant
- Band: stainless steel
- Case Diameter: 41.0 mm
- Case Thickness: 16.5 mm
- Caseback: Solid
- Bezel Material: Stainless Steel with 60-minute diving scale
- Water Resistance: 200m
- Crown Material: Screw Down, Fluted
- Calendar: Automatic Date
- Estimated Value: 1,300 – 2,000 US

**SOLD**



# Sale Catalog

---

## Lot 16 - Patek Philippe Golden Elipse Men's Automatic

- **Model:** 3738-100G-012
- **Box/Papers** – Yes New
- **Case Material:** 18k Rose Gold
- **Dial Color:** Brown
- **Movement:** Automatic Mechanical (Self-winding)
- **Engine:** Patek Philippe Caliber 240 (161 parts, 27 jewels, 21,600vph)
- **Functions:** Hours, Minutes
- **Crystal Material:** Sapphire - Scratch Resistant
- **Case Length:** 35.6 mm
- **Case Width:** 31.1 mm
- **Case Thickness:** 5.65 mm
- **Caseback:** 18k Rose Gold, Solid, No engravings or marks
- **Bezel Material:** 18k Rose Gold
- **Bezel Function:** Fixed - hobnail pattern
- **Water Resistance:** 25m
- **Crown Material:** 18k Rose Gold, Fluted
- **Calendar:** None
- **Power Reserve:** 48-hour power reserve
- **Bracelet / Strap:** Leather - Brown glossy
- **Clasp:** 18k Rose Gold Tang
- **Watch Bracelet Width:** 14.0 - 19.0 mm
- **Estimated Value:** 17,000 – 20,000 US



---

## Lot 17 - Maurice Lacroix Pontos Day Date

- **Box/Papers** - Yes
- **SN:** PT6027
- **Model #** AJ81891
- **Movement:** Automatic
- **Case:** Stainless Steel 36mm
- **Dial:** Black Arabic/index dial
- **Bezel:** Smooth
- **Crystal:** Sapphire
- **Band :** Black crocodile strap, ardillion buckle
- **Water Resistance :** 50 M
- **Circa:** 2007
- **Estimated Value:** 500 – 900 US

**SOLD**



---

### Lot 18 - Montblanc - Profile Lady Elegance

- Box/Papers - Yes New
- SN:PL60033
- Model: 104291
- Circa 2010
- Calibre: Montblanc 4810/110
- Features: Quartz
- Indications: Hour - minute hands
- Complications: -
- Battery: 317/1.5 V
- Frequency/Jewels: 5 jewels
- Bracelet: Polished stainless steel manchette
- Clasp/Buckle: Triple-folding clasp
- Sapphire crystal: Domed sapphire crystal with anti-reflective coating
- Case back: Stainless steel case back
- Crown: Non-screw crown, 1 O-ring
- Dial: White mother-of-pearl dial with crossover numerals at 3, 6, 9 and 12 o'clock
- Hands: Rhodium-plated luminescent baton hands
- Distance between horns/clasp: 18/18 mm
- Diameter: 23 x 35 mm
- Height: 8.3 mm
- Water-resistant: 3 bar (30 m)
- Estimated Value: 1,300 – 2,300 US

**SOLD**



---

### Lot 19 - Piaget 18 K yellow gold dress watch

- Box/Papers - No
- Lapis blue dial polished bezel and sapphire crystal
- Black Lizard strap with ardillion buckle
- Serial #144430 Model # 9286
- Circa: 1970's
- Estimated Value: 500 – 1,000 US



# Sale Catalog

---

## Lot 22 - Rolex Lady President Datejust Watch

- Box/Papers - No
- Model #79178
- 18 karat solid Gold
- 26 millimeters case
- Rolex automatic self-winding movement
- Sapphire Glass
- Champagne dial with date window
- Swim proof
- Swiss made
- Gender:Ladies
- Features: Automatic winding, 31 jewels, Quickset, sapphire crystal
- Case: 18k yellow gold case with fluted bezel (26mm diameter)
- Dial: Gold Dial
- Bracelet: 18k yellow gold Rolex hidden clasp President bracelet
- Circa: 1990's
- Estimated Value: 8,000 – 14,000 US

**SOLD**



## Lot 23 - Girrard Perregaux

- Model 49525-52-131-BK6A
- Series: 1966
- Style: Men's
- Case Material: 18k Rose Gold
- Dial Color: Silver
- Engine: Girard Perregaux GP03300 automatic (Caliber 11.5", 28,800vph, 27 jewels)
- Crystal Material: Anti-Reflective Sapphire Crystal
- Caseback: See through exhibition crystal on pressed Caseback
- Bezel Material: 18k Rose Gold
- Bezel Function: Fixed
- Crown Material: 18k Rose Gold, Fluted
- Calendar: Automatic Date at 3 o'clock
- Power Reserve: 46-hour power reserve
- Watch Bracelet / Strap Material: Leather - Black Crocodile (matt)
- Watch Clasp Material: Tang Buckle (Pin)
- Watch Bracelet Width: 16.0 - 20.0 mm
- Dimensions / Diameter : 38.00 mm
- Height : 8.50 mm
- Water resistance : 3 ATM (100 feet)
- Frequency : 28,800 Vib/h (4 Hz)
- Functions : Hour, minute, date, second
- Release Date: 2009
- Box Papers - Yes
- Estimated Value: 7,000-9,000 US

**SOLD**



---

#### Lot 24 - Bell & Ross BR01-94 Rose Gold Carbon

- Box/Papers - Yes
- Series: BR01-94 Chronograph 46mm
- Model No.: BR01-94 Pink Gold Carbon
- Dial Color: Black
- Bracelet/Strap: Rubber Black
- Clasp Type: Tang Buckle
- Movement: Automatic Chronograph
- Screw Down Crown: Yes
- Crystal Scratch Resistant Sapphire
- Case Back/Diameter/Material: Solid/46mm X 46mm/PVD & Rose Gold
- Water Resistant
- 100m/330ft
- Warranty: Prestige Time 2 Year Warranty
- Steel case with black CARBON coating & a solid Rose Gold face plate secured by 4 black carbon coated steel screws.
- Satin finished case with some polished finished highlights.
- Black dial with painted white Index & Arabic Numeral hour markers.
- Polished rose gold hands filled with high luminescent paint.
- Index markers painted with high luminescent paint.
- Chronograph/Stop-watch function
- Large central seconds counter.
- 30 minute counter sub-dial at the 9 o'clock position.
- Hour counter sub-dial at the 6 o'clock position.
- Small seconds sub-dial at the 3 o'clock position.
- Date window located between the 4 & 5 o'clock position.
- Additional black synthetic canvas/fabric strap is provided with the watch including a tool & instructions on how to replace the strap.
- ETA caliber 2894 beats at 28,800 vph, contains 37 jewels & has an approximate power reserve of 42 hours.
- Estimated Value: 8,500 – 10,000 USD



---

#### Lot 25 - Chopard 10-6115-23 Les Classiques Ladies Watch - White Dial

- Box/Papers - Yes
- 112 Diamonds Set on Bezel (1.59 Carat)
- 4 Sapphire Cabochon Crown
- Battery Operated Quartz Movement
- Guaranteed Authentic - Certificate of Authenticity
- Scratch Resistant Sapphire Crystal
- Solid 18k White Gold with Steel Case & Bracelet
- 30 Meters / 100 Feet Water Resistant
- 28mm X 28mm = 1 1/8" X 1 1/8" Case
- 6" Adjustable Bracelet
- Estimated Value: 12,000 – 16,000 US



# Sale Catalog

## Lot 26 - Chopard Happy Sport Square Ladies Watch #278358-2004

- Box/Papers - Yes
- 18k White gold bezel and stainless steel 27x27mm square case and bracelet, Bezel set with 104 diamonds (1.37 ctw), White dial with 7 floating diamonds (.39 ctw), 5 sapphire cabochons, Scratch resistant sapphire crystal, Swiss quartz movement, Water resistant 30M
- Double Locking Clasp
- 18k White gold bezel and stainless steel 27x27mm square case and bracelet
- Bezel set with 104 diamonds (1.37 ctw)
- White dial with 7 floating diamonds (.39 ctw)
- 5 sapphire cabochons
- Swiss Quartz movement.
- Water resistant to 30M
- Estimated Value: 13,000-16,000 US



## Lot 28 - Girard Perregaux Richeville Day-Night Watch

- Box/Papers - Yes
- Series: Richeville
- Model Number: 27610-52-151-BACA
- Gender: Mens
- Movement: Swiss Mechanical Automatic (Self-Winding)
- Caliber: GP 33G0.9
- Size: Large Power Reserve: 46 hours
- Case Material: 18kt Pink Gold
- Water Resistance: 30 meters
- Case Dimensions: 37mm length x 37mm width
- Case Thickness: 11.1mm
- CASE Shape: Barrel Tonneau
- Case Back: Screw-In Sapphire Crystal See-Through
- Jewels: 27
- Country Of Origin: Made in Switzerland
- Crown: Pull and Push Crown
- Finish: Polished
- Crystal: Sapphire Crystal Scratch Resistant
- Dial Color: White
- Bracelet/Strap: Brown Alligator
- Clasp Type: Deployant
- Special Features: Hour indicator with a 24 hour disc, day/night indicator, power reserve indicator
- Estimated Value: 12,000 – 16,000 US



**SOLD**

---

#### Lot 29 - Baume & Mercier Ilea Ladies Wristwatch

- **Model** MOA08771
- **Box/Papers** - Yes
- **Series:** Ilea
- **Style (Gender):** Ladies
- **Case Material:** Stainless Steel and Diamonds
- **Dial Color:** Mother-of-Pearl
- **Movement:** Swiss Quartz
- **Engine:** Base ETA F04 111
- **Functions:** Hours, Minutes, Center Seconds, Date at 6.
- **Crystal Material:** Anti-reflective Sapphire
- **Case Diameter:** 30.0 mm
- **Caseback:** Solid Stainless Steel
- **Bezel Material:** Steel with 28 Diamonds, Total Carat Weight of 0.34
- **Bezel Function:** Fixed
- **Water Resistance:** 30m
- **Crown Material:** Stainless Steel set with Single Diamond (0.02ct)
- **Calendar:** Automatic Date at 6 o'clock
- **Watch Bracelet / Strap Material:** Stainless Steel
- **Estimated Value** 1,500-2,200 US



---

#### Lot 31 - Baume & Mercier Ilea Women's Two-tone Watch

- **MOA08773**
- **Box/Papers** - Yes
- **Elegant women's timepiece showcased in steel and gold**
- **Classic feminine wristwatch fit for any occasion**
- **Luxury Baume & Mercier Ilea women's watch 8773**
- **Polished, satin-finished two-tone case and bracelet**
- **Triple-folding clasp**
- **Mother of pearl dial with a fine guilloche curved decor**
- **Applied Arabic numerals and index hour markers**
- **Date window at the 6 o'clock position**
- **Scratch-resistant sapphire crystal**
- **Swiss quartz battery operated movement**
- **Water resistant to 30 meters/100 feet**
- **Case measures 30 mm in diameter, 10 mm thick**
- **Bracelet measures 15.75 mm wide, 8 inches long**
- **Estimated Value** 950-1,300 US



# Sale Catalog

---

## Lot 32 - Baume & Mercier Diamant Ladies Wristwatch

- **Model** MOA08569
- **Box/Papers** - Yes
- **Series:** Diamant
- **Style (Gender):** Ladies
- **Case Material:** Stainless Steel and diamonds
- **Dial Color:** Mother of Pearl
- **Movement:** Swiss Quartz
- **Functions:** Hours, Minutes, Date
- **Crystal Material:** Sapphire - Scratch Resistant
- **Case Length/Width:** 33.0 mm/ 22.0 mm
- **Case Thickness:** 8.2 mm
- **Caseback:** Stainless Steel
- **Bezel Material:** Stainless Steel with 14 diamonds
- **Bezel Function:** Fixed
- **Water Resistance:** 30m / 100ft (suitable for splashing, light rain; unsuitable for swimming or diving)
- **Crown Material:** Oval crown set with diamond
- **Calendar:** Automatic Date at 6 o'clock
- **Power Reserve:** 2 year power reserve
- **Watch Bracelet / Strap Material:** Stainless Steel
- **Watch Clasp Material:** Deployment - Stainless Steel
- **Estimated Value** 1,500-2,200 US



## Lot 33 - Baume & Mercier Riviera Ladies Wristwatch

- **Model** MOA08715
- **Box/Papers** - Yes
- **Series:** Riviera
- **Style (Gender):** Ladies
- **Dial Color:** Mother-of-Pearl with diamonds and Logo
- **Movement:** Swiss Quartz
- **Functions:** Hours, Minutes
- **Crystal Material:** Sapphire - Anti-Reflective
- **Case Diameter/Thickness/Material:** 22.0 mm/5.8 mm/ Stainless Steel
- **Caseback:** Solid Stainless Steel
- **Bezel Material/Function:** S/S Fixed
- **Water Resistance:** 50m / 165ft (suitable for showering; not usually suitable for swimming; unsuitable for diving)
- **Crown Material:** Stainless Steel
- **Watch Bracelet / Strap Material:** Stainless Steel
- **Watch Clasp Material:** Hidden Folding
- **Estimated Value** 950-1,700 US

**SOLD**



---

#### Lot 34 - Baume & Mercier Ilea Ladies Wristwatch

- **Model** MOA08775
- **Box Papers** – Yes
- **Series:** Ilea
- **Style (Gender):** Ladies
- **Case Material:** Stainless Steel
- **Dial Color:** Mother-of-Pearl Guilloche
- **Movement:** Swiss Quartz
- **Engine:** Base ETA F04 111
- **Functions:** Hours, Minutes, Center Seconds, Date at 6.
- **Crystal Material:** Anti-reflective Sapphire
- **Case Diameter/Thickness:** 30.0 mm/ 8.5 mm
- **Caseback:** Solid Stainless Steel
- **Bezel Material/Function:** Steel, polished/satin finish set with 28 diamonds/ Fixed
- **Water Resistance:** 30m / 100ft (suitable for splashing, light rain; unsuitable for swimming or diving)
- **Crown Material:** Gold set with Single Diamond (0.02ct)
- **Calendar:** Automatic Date at 6 o'clock
- **Watch Bracelet / Strap Material:** Stainless Steel and Gold
- **Watch Clasp Material:** Hidden Folding
- **Additional Info:** The oval dial is graced with a fine guilloche 'Curve' motif that accentuates the flowing lines and understated elegance of a timeless design. The crown is discreetly adorned with an offset diamond (0.02ct).
- **Estimated Value** 1,700-2,500 US



---

#### Lot 35 - Bell & Ross BR 02 Chronograph Carbon with Rose Gold Cap

- **Bi-Color on Rubber Strap**
- **BR Instrument BR 02 Chronograph Pink Gold Carbon**
- **BR-02-94-BI**
- **Movement:** Automatic
- **Case:** PVD and 18KT Rose Gold Case Size: 44mm
- **Dial:** Black
- **Bracelet:** Rubber
- **New with Box and Papers**
- **Description:** 500 meter chronograph dive watch from the Bell & Ross BR02 series features a Swiss automatic movement, non-glare sapphire crystal and a combination 18k rose gold and glass-bead blasted 316L stainless steel case with a carbon black finish. Watch includes interchangeable rubber and nylon straps and a decompression valve for deep-sea diving. A unidirectional timing bezel rotates under the crystal and has a luminescent reference point. Case width is 44mm.
- **The BR 02 Pink Gold Carbon Automatic has a 44mm Pink Gold and Steel Case with Black Carbon Powder Coating. The Dial is Black with Pink Gold Markers and White Numerals. Water Resistance is 100 Meters. The BR 02 Pink Gold Carbon Automatic has a Self Winding Swiss Movement and is Secured with a Black Rubber Strap and Bell & Ross Pink Gold Tang Buckle**
- **Estimated Value** 8,000-11,000 US



# Sale Catalog

---

## Lot 36 - Tag Huer Aquaracer GTS 2000

- **Model number:** CAF2111.BA0809
- **Movement:** Swiss Automatic
- **Clasp:** fold-over-clasp-with-safety
- **Case material:** stainless-steel
- **Case diameter:** 42.5 millimeters
- **Case Thickness:** 15 millimeters
- **Band material:** stainless-steel
- **Band length:** mens
- **Band width:** 20 millimeters
- **Band Color:** silver
- **Dial color:** silver scratch resistant sapphire
- **Bezel material:** stainless-steel
- **Bezel Function:** unidirectional
- **Calendar:** Date
- **Special Features:** chronograph, luminous, stop-watch
- **Water Resistant:** 300 Meters
- **Estimated Value** 1,600-2,000 US



---

## Lot 37 - Ernst Benz Chronodiver

- **Caliber:** Automatic: Valjoux 7750
- **Incabloc, Glucydur Balance,**
- **Nivarox Alloy Hairspring**
- **Functions:** Hours, Minutes, Subsidiary Seconds, Day and Date
- **Chronograph:** Hours, Minutes and Central Seconds
- **47mm:** Brushed Stainless Steel
- **Bezel:** Unidirectionally rotating with 60-Minute elapsed timing scale
- **Crown:** Knurled, Screw Down – Double O-ring sealed
- **Flat sapphire glass with anti-reflective treatment on the lower side**
- **Exhibition back with sapphire glass**
- **Water Resistant:** 20 Atmospheres/200m
- **Dial:** White w/green luminous numerals
- **Strap:** Handmade Brown
- **Estimated Value:** 3,000-4,500 US



---

### Lot 38 - Cartier Men's Santos 100 XL Automatic Watch

- **Brand Name:** Cartier
- **Item Shape:** square
- **Dial window material type:** scratch-resistant-sapphire
- **Display Type:** analog
- **Clasp:** deployment-buckle
- **Case material:** stainless-steel
- **Case diameter:** 38 millimeters
- **Case Thickness:** 10 millimeters
- **Band material:** Leather
- **Band length:** men's
- **Band width:** 23 millimeters
- **Band Color:** black
- **Dial color:** white
- **Bezel material:** stainless-steel
- **Bezel Function:** stationary
- **Movement:** swiss-automatic
- **Water resistant depth:** 330 Feet
- **Estimated Value** 3,900-5,000 US



---

### Lot 39 - Ernst Benz Chronolunar Month Day Date

- **SS/Chrono Lunar 47mm**
- **White Dial/Black Strap**
- **47mm**
- **Movement:** Automatic Valjoux 7751, Incabloc, Glucydur Balance, Nivarox Alloy Hairspring
- **Functions:** Hours, Minutes, Subsidiary Seconds, Day and Date, Month, Moon Phases and 24 Hour Display. Chronograph with Hours, Minutes and Sweep Seconds
- **Case:** Polished Stainless Steel, Exhibition Type Back with Sapphire Crystal
- **Crown:** Knurled, Double O-Ring Sealed
- **Crystal:** Domed Sapphire Glass
- **Strap:** Alligator
- **Bracelet:** Polished Stainless Steel
- **Water Resistant:** 5 Atmospheres/165
- **As in the historical timepieces from which this model draws inspiration, the distinguishing feature of the ChronoLunar lies in the way it indicates the position of the calendar. Embodying an authentic demonstration of mechanical ingenuity, its calendar displays the day, month and phases of the moon through apertures, while a half-moon shaped center hand indicates the date. In addition, a subsidiary display shows 24-hour or military time.**
- **Estimated Value** 4,000-6,300 US



# Sale Catalog

---

## Lot 40 - Tag Heuer Calibre Link 16 Day-Date Automatic Chronograph

- CJF211B.BA0594
- SS 42 mm
- Day & Date Calendar
- Chronograph Feature
- Fixed Bezel
- Self Winding Automatic Movement
- Sapphire Crystal Exhibition Case Back
- Certificate of Authenticity
- Scratch Resistant Sapphire Crystal
- Brushed Steel Case & Bracelet
- Manufacturer Box & Manual
- 200 Meters / 660 Feet Water Resistant
- 42mm = 1 5/8" Case, 7" Adjustable Bracelet
- Double Button Deployment Buckle
- Luminescent Hands & Markers
- Screw Down Crown & Caseback
- Estimated Value 2,000-3,000 US



## Lot 41 - Breitling Super Avenger Black Steel Men's Watch M1337010-B930-122S Limited Edition

- Breitling Super Avenger Black Steel Men's Watch M1337010-B930-122S Black pvd-coated stainless steel case with a black rubber bracelet. Unidirectional bezel. Black dial with luminous hands and luminous numbers hour markers. Luminescent hands and dial markers. Date display at 3 o'clock position. 3 black sub dials. Automatic c.o.s.c movement. Scratch resistant sapphire crystal. Case diameter: 48.4mm. Case thickness: 18.6mm. Pvd-coated stainless steel tang clasp. Water resistant at 300 meters (1000 feet). Breitling Super Avenger Black Steel Men's Watch M1337010-B930-122S.
- Collectors condition and complete with box and papers.
- Estimated Value: 4,800 – 6,000 USD
- 

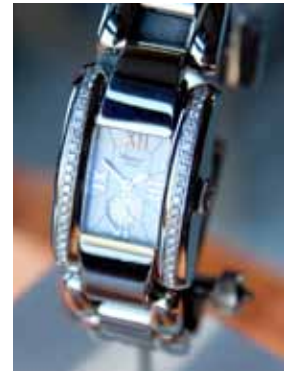


**SOLD**

.....

#### Lot 42 - Chopard La Strade Lady's Stainless Steel Diamond Bezel

- Gender: Ladies
- Series: La Strada
- Movement: Quartz
- Functions: Hours/ Minutes/ Seconds
- Case Material/Diameter: Stainless Steel/23mm x 34.5mm
- Crown: Screw Down
- Bezel: 46 Diamonds
- Dial Color/Markers: White/Silver Tone Roman Numerals
- SubDials: White Hands: Silver Tone
- Bracelet: Stainless Steel
- Water Resistant: 30 meters / 100 feet
- Crystal: Sapphire
- Country of Origin: Swiss Made
- Stainless steel case with a stainless steel bracelet. 46 diamonds bezel. White dial with silver tone hands and silver tone Roman numerals hour markers. White. Quartz movement. Scratch resistant sapphire crystal. Screw down crown. Case diameter: 23mm x 34.5mm. Jewelry clasp. Water resistant at 30 meters / 100 feet. Chopard La Strada Diamond Steel White Ladies Watch
- Estimated Value: 4,000 – 6,000 USD



.....

#### Lot 43 - Ennebi Fondale 9660-100 GF PVD Titanium 47 mm LTD, Ennebi Fondale 9660-100 Titanium

- GF 47 mm Dive Watch
- Ennebi Fondale Dive Watch in Titanium and PVD Black coating & Black Dial
- PVD GF Model
- Brand new in box
- The watch is created by Alessandro Bettanini and Luciano Nincheri. Alessandro was the head engineer at Panerai prior to the Richemonte buy out. Ennebi watch is a company of engineers who used to work for the military.
- It is said that Alessandro designed this, the first 1000 meter dive watch, in 1980 and a few prototypes were made but none were ordered by the Italian Navy, so this model never went into production.
- Base Model w hour, minute & large sweeping second hand
- Black Dial
- Self winding movement 25,60 Caliber
- Power reserve 38 hours
- Case is 47 mm in Micropeened Titanium with PVD coating
- Water and pressure tested of 1000m
- Organic mineral glass with Anti Reflective Coating
- Luminous minute digits and indicators
- Self-locking bidirectional bezel, clicks every 2,5 min
- Beveled bezel index
- 24mm lugs
- Limited Edition of 300 units.
- Estimated Value: 3,000 – 4,000 USD



# Sale Catalog

## Lot 44 - Graham Silverstone Chronograph Blue Dial 41.5 mm on bracelet

- Like New in Box
- Mechanical automatic movement (G-1721 caliber, 131/4, 28,800 vph, 28 jewels, Cotes de Geneve and circular graining decoration, blued steel screws, adjusted five positions). Low carbon, high corrosion resistance 41.60mm three piece stainless steel watch case. Screw down case back with engraved royal marine crown on the back. Curved sapphire crystal. Black luminescent dial with Arabic numerals. Hours, minutes, small seconds, second time zone indicator, date, chronograph with minute counter, center flyback seconds, tachymeter scale. 160 feet water resistance.
- Estimated Value: 3,700 – 4,500 USD



## Lot 45 - A. Lange & Sohne Grande Date Rose Gold

- Manual winding
- Case Material: Pink gold
- Bracelet Material: Crocodile skin
- Condition: 1 (mint)
- Box/Papers - Yes
- Location: United States
- Movement: Manual winding
- Case Material: Pink gold
- Case Diameter: 42.0 mm
- Dial: Grey
- Bracelet Color: Black
- Clasp: Fold Clasp
- Functions: Date
- Display Back, Power Reserve Display
- Gent's 18K Rose Gold A. Lange & Söhne "Grosse Lange 1".
- Black/Grey Dial with Oversized Double Date Indicator.
- Subsidiary Seconds and Power Reserve Indicator.
- Smooth 18K Rose Gold Bezel.
- Highest Quality A. Lange & Söhne Black Crocodile Strap with 18K Rose Gold Lange Deployant Clasp.
- NOTE: This watch does not come standard with the Deployant Gold Clasp, it is a very expensive optional accessory.
- Case Diameter: 42mm.
- Handmade Mechanical Movement visible through Exhibition Caseback.
- Certified Pre-Owned, Mint Condition with A. Lange & Söhne Box, Warranty Papers, Booklets and complete with Capetown's Lifetime Warranty
- Estimated Value: 24,000 – 27,000 USD



**SOLD**

.....

#### Lot 46 - Patek Philippe 5712R Rose Gold Nautilus

- **Case Material:** Pink gold
- **Bracelet Material:** Leather
- **Condition:** Like New
- **Box/Papers** - Yes
- **Case**
- **Glass:** Sapphire Glass
- **Dial:** Grey
- **Bracelet Color:** Brown
- **Buckle Material:** Pink Gold
- **Functions:** Moonphase, Date
- **Power Reserve Display**
- **Comments:** A Jumbo Nautilus Moonphase in 18k Rose Gold, automatic movement, dark grey dial with index batons, moonphase and power reserve indicators, sapphire glass, fixed bezel, exhibition back, original brown leather strap (brand new) with an 18k rose gold fold-over clasp, water resistant to 60m / 200ft, in mint condition, comes with an original box and papers
- **Estimated Value:** 35,500 – 39,000 USD



.....

#### Lot 47 - Sothis Central B Chronograph stainless automatic by Wolfgang Steinkruger in 42mm LTD, LNIB

- **Sothis Central B Chronograph 42mm stainless steel automatic LNIB.** Complete with all boxes and papers. This is Limited Edition 61/999. The watchmaker Wolfgang Steinkruger said that only approximately 200 pieces were made. Sothis is an independent German Watchmaker who makes everything his handmade. His website is sothis.de If you go to his website and click the watches then scroll down to Sothis Museum you will see the watch 2nd from the left on the top row. Only his favorite watch designs are kept in his museum. The central chronograph is a really interesting design. The yellow hand is the chrono sec hand. The small red hand in the middle moves continually as the chrono minute hand. Watch was purchased in January, 2009 and has a 2 year warranty.
- **Estimated Value:** 2,500 – 3,500 USD



# Sale Catalog

## Lot 48 - Hublot Big Bang Arctic 3 Winter Camo Limited Edition of 250

- Brand New in Box
- The Arctic is the 3rd watch released in Hublot's "camo" line of limited edition watches. The first was a green camo called the "jungle" and the second was a tan camo called the "desert". This third special edition called the "winter" camo in the Arctic line up has been received as the best of the 3.
- It is a 44mm mat black ceramic Big Bang, LE of 250 pieces. The strap is covered in Nomex (a flame resistant material developed by DuPont). This sample is as complete as possible. It has the plastic hang tag and the bag it ships in has a sticker specific to the watch. The "Wise Key" warranty and certificate info is under the box. The owner plugs the card reader into a USB port and then inserts the warranty card. The watch will show as authentic and watch use instructions are available online. Also, included you will receive a Jean Claude Biver extended warranty through 2015.
- Estimated Value: 10,000 – 12,000 USD



## Lot 49 - Panerai: Pam 127

- Model: Luminor 1950
- Production Years: 2002
- Movement: Calibre OP XI
- Power Reserve: 56 hours
- Water Resistance: 100m
- Dial Color: Black
- Bezel: Brushed Steel
- Case/Case back: Polished Steel/Exhibition
- Crown Protector: Yes
- Crystal: 2mm Sapphire
- Diameter: 47mm
- Strap/Bracelet: Leather
- Lug Width: 26mm
- Special Edition: Only 1950 units created
- Movement: hand-wound mechanical, Panerai OP XI Calibre with swan's neck regulator, 16½ lignes, 17 jewels, Côtes de Genève decoration. Glucydur® balance with Nivarox® I spring, 21,600 alternations/hour. Incabloc® anti-shock device. Power reserve 56 hours. Chronometer Certificate (C.O.S.C.).
- Case: diameter 47mm, brushed steel.
- Bezel: polished steel.
- Back: see-through sapphire crystal.
- Dial: black with luminous Arabic numerals and hour markers. It consists of two superimposed discs: the top one is perforated with the numerals and hour markers while the lower one is covered with a thin layer of Super Luminova. Small seconds dial at 3 o'clock.
- Crystal: sapphire, formed of corundum, 2 mm thick. Anti-reflective coating.
- Water resistance: 100 meters.
- Strap: PANERAI personalized calf strap and large size brushed steel buckle. Supplied with a steel screwdriver and a second interchangeable strap, missing movement sticker.
- Estimated Value: 19,500 – 24,000 USD



.....

#### Lot 50 - Panerai Men's Luminor GMT PAM 161

- Limited Edition 500 pcs
- Series: Luminor GMT
- Model No.: Pam 161
- Case Material: Titanium and Steel
- Dial Color: Black
- Movement: Automatic
- Bracelet/Strap: Titanium and Stainless Steel
- Crystal: Scratch Resistant Sapphire
- Case back: Screw Down
- Case Diameter: 44mm
- Engine: OP VIII Calibre 13 1/4', 21 Jewels, 28,800 VPH
- Water Resistant: 1000 Feet
- Functions: Hours, Minutes, Small Seconds, Date, Second Time Zone
- Condition: Pre-owned
- Estimated Value: 5,800 – 7,000 USD

**SOLD**



.....

#### Lot 51 - Panerai PAM 171 Luminor Marina Power Reserve on Bracelet 44 mm.

- Never worn with box and papers.
- The black dial with silver sub dial and power reserve indicators practically jump off the face. They are complimented by the high polished stainless steel bezel and 44 mm case.
- Movement: automatic mechanical, exclusive Panerai OP IX calibre, 13¼ lignes, 21 jewels, Côtes de Genève decoration on the bridges. PANERAI personalised oscillating weight. Glucydur® balance, 28,800 alternations/hour with Incabloc® anti-shock device.
- Power reserve 42 hours.
- Chronometer Certificate (C.O.S.C.).
- Functions: hours, minutes, small seconds, date, power reserve.
- Case: diameter 44 mm, AISI 316L polished steel.
- Bezel: steel.
- Back: solid screw down
- Device protecting the crown: (protected as a Trade Mark) steel.
- Crystal: sapphire, formed of corundum, 2.5 mm thick, magnifying lens over the date at 3 o'clock. Anti-reflective coating.
- Water-resistance: 30 bar (~300 meters).
- Bracelet: integrated with the case and made up of links, each consisting of two parts, one titanium and one steel, overlapped and screwed.
- Estimated Value: 8,000 – 9,200 USD



# Sale Catalog

## Lot 52 - Anonimo Chronoscopio AMG Chronograph

- Circa: 2005
- Brand New and Never Worn Complete with Box & Papers
- Special Edition of only 100 Units **SOLD**
- As you may know, this Italian brand was created and launched by some of the pre-Vendome Panerai company employee's. The styling is similar in size and the hearty durability has been given to each watch.
- This model has a 44 mm stainless steel case with a black dial and date function. It was a limited edition made with the AMG logo on the dial.
- Estimated Value: 2,900 – 4,200 USD



## Lot 53 - Panerai: PAM 111

- Never worn NIB
- This is a wonderful 44 mm polished stainless steel Panerai watch with the patented locking crown. It has a black two layered sandwich dial giving the numbers and indices a true 3 dimensional appearance. The see through exhibition back enables you to view the manual wind movement. It comes on a tan calf with a Pre Vendome style buckle adding contrast for a stunning look. It also comes with a rubber dive strap and screwdriver.
- Movement: hand-wound mechanical, Panerai OP XI Calibre with swan's neck regulator, 16½ lignes, 17 jewels, Côtes de Genève decoration on the bridges. Glucydur® balance with Nivarox® I spring, 21,600 alternations/hour.
- Incabloc® anti-shock device. **SOLD**
- Power reserve 56 hours.
- Chronometer Certificate (C.O.S.C.).
- Functions: hours, minutes, small seconds.
- Case: diameter 44 mm, AISI 316L polished steel.
- Bezel: polished steel or brushed titanium.
- Back: see-through sapphire crystal.
- Device protecting the crown: (protected as a Trade Mark) brushed steel or brushed titanium.
- Crystal: sapphire, formed of corundum, 3.5 mm thick.
- Anti-reflective coating.
- Water-resistance: 300 meters.
- Strap: leather or alligator with PANERAI personalized buckle.
- Estimated Value: 4,700 – 5,500 USD



---

#### Lot 54 - Panerai PAM 107 Luminor Marina 44 mm Special Edition Regatta 2001

- Like new with box and papers.
- Luminor Marina Regatta
- Production Years: 2001
- Movement: Calibre OP III
- Power Reserve: 42 hours
- Water Resistance: 300m
- Dial Color: Black
- Bezel: Polished Steel
- Case/Case back: Polished Steel/Solid
- Crown Protector: Yes
- Crystal: 3.5mm Sapphire
- Diameter: 44mm
- Strap/Bracelet: Rubber
- Lug Width: 24mm
- Reference Number: PAM107 PAM00107
- Estimated Value: 6,500 – 8,000 USD



---

#### Lot 55 - Panerai for Purdey PAM 155 Luminor Sealand Floral & Gold 44 mm

- Unique edition of 100 units subdivided into 4 references
- Only 25 Units Created!
- Never Worn with Box & Papers
- Hand Engraved
- Movement: automatic mechanical, exclusive calibre Panerai OP III, 13¼ lignes,
- 21 jewels.
- Glucydur® balance, 28,800 alternations/hour.
- Incabloc® anti-shock device.
- Power reserve 42 hours.
- Bridges and oscillating weight personalised PANERAI.
- Chronometer certificate (C.O.S.C.).
- Functions: hours, minutes, seconds, date.
- Case: diameter 44 mm, brushed steel AISI 316L.
- Bezel: brushed steel, cover engraved by hand.
- Back: screw, steel. Officine Panerai For Purdey engraving.
- Device protecting the crown: (protected as a Trade Mark) in steel.
- Dial: black and grey, with grey hour markers and Arabic numerals at 6 and 12 o'clock. Small seconds at 9 o'clock, date at 3 o'clock.
- Crystal: sapphire, made from corundum, 1.25 mm thick.
- Magnifying lens at 3 o'clock.
- Anti-reflective coating.
- Water resistance: 50 metres.
- Strap: leather with steel buckle personalized PANERAI. Steel screwdriver and second strap.
- Estimated Value: 17,000 – 22,000 USD



# Sale Catalog

---

## Lot 56 - Panerai for Purdey PAM 154 Luminor Sealand Four Bird 44 mm

- Unique edition of 100 units subdivided into 4 references
- Only 25 Units Created
- Never Worn with Box & Papers
- Hand Engraved
- Movement: automatic mechanical, exclusive calibre Panerai OP III, 13¼ lignes, 21 jewels.
- Glucydur® balance, 28,800 alternations/hour.
- Incabloc® anti-shock device.
- Power reserve 42 hours.
- Bridges and oscillating weight personalised PANERAI.
- Chronometer certificate (C.O.S.C.).
- Functions: hours, minutes, seconds, date.
- Case: diameter 44 mm, brushed steel AISI 316L.
- Bezel: brushed steel, cover engraved by hand.
- Back: screw, steel. Officine Panerai For Purdey engraving.
- Device protecting the crown: (protected as a Trade Mark) in steel.
- Dial: black and grey, with grey hour markers and Arabic numerals at 6 and 12 o'clock. Small seconds at 9 o'clock, date at 3 o'clock.
- Crystal: sapphire, made from corundum, 1.25 mm thick.
- Magnifying lens at 3 o'clock.
- Anti-reflective coating.
- Water resistance: 50 metres.
- Strap: leather with steel buckle personalized PANERAI. Steel screwdriver and second strap.
- Estimated Value: 17,000 – 22,000 USD



---

## Lot 58 - Panerai: PAM 10A

- Movement: Calibre OP I
- Power Reserve: 56 hours
- Water Resistance: 300m
- Dial Color: White Tritium Dial
- Bezel: Polished Steel
- Case: Polished Steel
- Case back: Solid
- Crown Protector: Yes
- Crystal: 3.5mm Sapphire
- Diameter: 44mm
- Strap/Bracelet: Black Leather
- Lug Width: 24mm
- Comes with both boxes, warranty card, booklet, menu, OP screwdriver, 2 screws
- Estimated Value: 7,100 – 8,500 USD



.....

### Lot 57 - Panerai for Purdey PAM 153 Luminor Sealand Single Bird 44 mm

- Unique edition of 100 units subdivided into 4 references
- Only 25 Units Created
- Never Worn with Box & Papers
- Hand Engraved
- Movement: automatic mechanical, exclusive calibre Panerai OP III, 13¼ lignes, 21 jewels.
- Glucydur® balance, 28,800 alternations/hour.
- Incabloc® anti-shock device.
- Power reserve 42 hours.
- Bridges and oscillating weight personalised PANERAI.
- Chronometer certificate (C.O.S.C.).
- Functions: hours, minutes, seconds, date.
- Case: diameter 44 mm, brushed steel AISI 316L.
- Bezel: brushed steel, cover engraved by hand.
- Back: screw, steel. Officine Panerai For Purdey engraving.
- Device protecting the crown: (protected as a Trade Mark) in steel.
- Dial: black and grey, with grey hour markers and Arabic numerals at 6 and 12 o'clock. Small seconds at 9 o'clock, date at 3 o'clock.
- Crystal: sapphire, made from corundum, 1.25 mm thick.
- Magnifying lens at 3 o'clock.
- Anti-reflective coating.
- Water resistance: 50 metres.
- Strap: leather with steel buckle personalised PANERAI. Steel screwdriver and second strap.
- Estimated Value: 17,000 – 22,000 USD



.....

### Lot 59 - Panerai: Pam 01 Pre A Luminor Marina T-Swiss-T Dial

- Strap: leather
- Dial: black
- Comments: very nice and complete Pam1A T-dial, inner and outer box, COSC certificate, warranty card, movement sticker, Libretto, screw driver, second strap, 2 screw buckle.
- The first and perhaps most iconic of the Panerai historic line of watches. The transition from Panerai of old to Panerai of new via the (then Cartier-Vendome) Richemont group. The transition brought about many rarities in the Panerai world. The Pre-A 1 is the transition between the two. For the longest time many people saw no difference between a Pre-A 1 and a 1a, but the variation in the dial was quite evident. The Pre-A features letters at the bottom of the dial saying "t-swiss-t" while the 1a features "t swiss t", lacking the hyphens of the Pre-A. These are desirable for their "fatter" numerals and rarity.
- Functions: - small second hand
- Estimated Value: 24,000 – 27,000 USD

**SOLD**



# Sale Catalog

---

## Lot 60 - Panerai: PAM 9A

- Box/Papers yes
- Model: Luminor Base PVD
- Production Years: 1998-1999
- Movement: Calibre OP I
- Power Reserve: 56 hours
- Water Resistance: 300m
- Dial Color: Black
- Bezel: PVD Steel
- Case: PVD Steel
- Caseback: Solid
- Crown Protector: Yes
- Crystal: 3.5mm Sapphire
- Diameter: 44mm
- Strap/Bracelet: Leather
- Lug Width: 24mm
- Estimated Value: 22,000 – 28,000 USD

**SOLD**



## Lot 61 - Panerai: PAM 000 H

- Movement: hand-wound mechanical, Panerai OP I calibre, 16½ lignes, 17 jewels. Cotes de Genève decoration on the bridges. Glucydur® balance with Nivarox® I spring, 21,600 alternations/hour.
- Incabloc® anti-shock device.
- Power reserve 56 hours.
- Functions: hours and minutes.
- Case: diameter 44 mm. AISI 316L polished steel.
- Bezel: polished steel.
- Back: screw, steel. Logo engraved.
- Device protecting the crown: (protected as a Trade Mark) polished steel.
- Dial: black, with Arabic numerals and logo.
- Crystal: sapphire, made from corundum, 3.5 mm thick. Anti-reflective coating.
- Water-resistance: 300 metres.
- Strap: black calf with PANERAI personalized buckle
- Estimated Value: 3,800 – 4,300 USD

**SOLD**



.....

#### Lot 62 - Panerai 5218-301a Mare Nostrum Chronograph Pre Vendome 42 mm

- It has a super rare blue outer box, two Pre Vendome OEM Panerai straps with sewn in Pre Vendome Logo buckles plus blue sharky aftermarket, Original box and original paperwork proving its authenticity. NO - pre Vendome brass screwdriver
- Mare Nostrum
- Production Years: 1993
- Movement: ETA 2801-2, DD 3127
- Power Reserve: N/A
- Water Resistance: 50m
- Dial Color: Blue
- Bezel: Steel
- Case: Steel
- Caseback: Solid
- Crown Protector: No
- Crystal: 1.6mm Sapphire
- Diameter: 42mm
- Strap/Bracelet: Leather and Blue Sharkie
- Estimated Value: 18,500 – 22,000 USD



.....

#### Lot 63 - Panerai: Pam 164M

- New in Box
- Movement: automatic mechanical, exclusive Panerai OP III calibre, 13¼ lignes, 21 jewels. Côtes de Genève decoration on the bridges. PANERAI personalized oscillating weight. Glucydur® balance, 28,800 alternations/hour.
- Incabloc® anti-shock device.
- Power reserve 42 hours.
- Chronometer Certificate (C.O.S.C.).
- Functions: hours, minutes, small seconds, date.
- Case: diameter 44 mm, steel
- Bezel: steel
- Back: screw, steel
- Device protecting the crown: (protected as a Trade Mark) steel
- Crystal: sapphire, formed of corundum, 3.5 mm thick, magnifying lens over the date at 3 o'clock. Anti-reflective coating.
- Water-resistance: 300 meters.
- Strap: alligator with PANERAI personalized buckle.
- Estimated Value: 5,300- 6,300 USD

**SOLD**



# Sale Catalog

## Lot 64 - Panerai: Pam 5218-203A

- Luminor Marina
- Production Years: 1994
- Movement: Calibre Unitas 6497
- Power Reserve: 45 Hours
- Water Resistance: 300m
- Dial Color: Black
- Bezel: PVD Steel
- Case/ Caseback: PVD Steel/Solid
- Crown Protector: Yes
- Crystal: Sapphire
- Diameter: 44mm
- Strap/Bracelet:Leather
- Lug Width: 24mm
- This is a very rare Pre Vendome Panerai that is from the era when Panerai was owned by the Panerai family and not yet owned by Richmont. Panerai watches were not offered to the public until 1991 (all previous models were made for military use only). This is one of the first models introduced to the public in the early 1990's and one of the models Sylvester Stallone fell in love with and commissioned similar pieces to be made.
- Notice the thick numerals, they are slightly recessed into the dial and painted in tritium.
- Estimated Value: 64,000 – 70,000 USD



## Lot 65 - Panerai PAM 177 L Titanium Luminor Marina

- Black Sandwich Dial 44 mm
- Collectors condition complete with box and papers. Comes with OEM rubber dive strap. Original brown alligator strap has been replaced with an Italian Ferretti distressed calf with sewn in brushed stainless steel Vendome style buckle. It also has an OEM titanium thumbnail style buckle. All papers and boxes are also present as seen in pictures.
- Movement: hand-wound mechanical Panerai OP XI calibre with swan's neck regulator, 16½ lignes, 17 jewels, Côtes de Genève decoration on the bridges. Glucydur® balance with Nivarox® I spring, 21,600 alternations/hour.
- Incabloc® anti-shock device.
- Power reserve 56 hours.
- Chronometer Certificate (C.O.S.C.).
- Functions: hours, minutes, small seconds.
- Case: diameter 44 mm in brushed titanium.
- Bezel: brushed titanium.
- Back: see-through sapphire crystal.
- Device protecting the crown: (protected as a Trade Mark) brushed titanium.
- Crystal: sapphire, formed of corundum, 3.5 mm thick.
- Anti-reflective coating.
- Water-resistance: 30 bar (~300 metres).
- Strap: leather & rubber with PANERAI personalized buckle.
- Estimated Value: 4,700 -5,800 USD



---

#### Lot 66 - Panerai: PAM 140

- Yellow Gold Luminor Marina Carbon Dial 44 mm
- New in Box.
- Movement: automatic mechanical, exclusive Panerai OP III calibre, 13¼ lignes, 21 jewels. Cotes de Genève decoration on the bridges. PANERAI personalized oscillating weight. Glucydur® balance, 28,800 alternations/hour.
- Incabloc® anti-shock device.
- Power reserve 42 hours.
- Chronometer Certificate (C.O.S.C.).
- Functions: hours, minutes, small seconds, date.
- Case: diameter 44 mm, 18ct yellow gold with a slight pink tinge
- Bezel: 18ct yellow gold with a slight pink tinge
- Back: screw, gold
- Device protecting the crown: (registered Trade Mark) 18ct yellow gold with a slight pink tinge Crystal: sapphire, formed of corundum, 3.5 mm thick, magnifying lens over the date at 3 o'clock. Anti-reflective coating.
- Water-resistance: 300 meters.
- Strap: alligator with PANERAI personalized buckle.
- Estimated Value: 16,500 – 19,000 USD

**SOLD**



---

#### Lot 67 - Panerai PAM 90L Power Reserve Luminor Marina 44 mm

- Model: Luminor Power Reserve
- Production Years: 2001-Current
- New in Box
- Movement: Calibre OP IX
- Power Reserve: 42 hours
- Water Resistance: 300m
- Dial Color: Black
- Bezel: Polished Steel
- Case: Polished Steel
- Caseback: Solid
- Crown Protector: Yes
- Crystal: 2.5mm Sapphire w/Magnifier
- Diameter: 44mm
- Strap/Bracelet: Alligator
- Lug Width: 24mm
- Estimated Value: 6,400 - 7,500 USD



# Sale Catalog

## Lot 68 - IWC Portuguese Chrono Automatic Edition Laureus Sport for Good Foundation

- Like New in Box
- Special Edition of 2000 Units Created.
- Collectors condition complete with box and papers
- The feature that immediately stands out on the new Portuguese Chrono-Auto-automatic Edition Laureus Sport for Good Foundation is the elegant dial, which is galvanized to give it the blue colour. With its embossed Arabic numerals and swallow-style hands, the watch is immediately recognizable as a Portuguese Chronograph. This model, which is available in a special limited edition of 2000, comes with an alligator leather strap in the same deep shade of dark blue and harmonizes perfectly with the dial. But the unusual thing about this apart from the engraving on the back, inspired by a child's drawing is the fact that for each watch sold, IWC will make a donation to the Laureus Sport for Good Foundation. So apart from taking pleasure in the acquisition of a particularly beautiful and elegant timepiece, buyers can also be proud of making a purchase that does someone else good.
- Functions: Hours, Minutes, Seconds and Chronograph
- Case: Stainless Steel
- CaseBack: Engraved Special Edition
- Bracelet: Dark Blue Crocodile
- Dial: Blue
- Subdial: Chronograph and Seconds
- Hand Indicators: Polished
- Hour Markers: Polished
- Crystal: Anti Reflective Sapphire
- Movement: Calibre 79350 Automatic - Vibrations: 28 800/h / 4 Hz - Jewels: 31 - Power reserve: 44 h
- Case Width: 40.9mm
- Case Thickness: 12.3mm
- Clasp Type: Folding
- Water Resistant: 30 M
- Estimated Value: 4,800 - 6,500 USD



**SOLD**

.....

**Lot 69 - IWC Aquatimer Chronograph Cousteau Special Edition IW378203**

- In excellent condition and complete with box and papers.
- Reference IW378203
- Limited edition of 2500 watches
- Mechanical movement
- Self-winding
- 44-hour power reserve when fully wound
- Day and date display
- Small hacking seconds hand
- Mechanical rotating inner bezel
- Luminescent elements on hands, dial and rotating inner bezel
- Sapphire glass, antireflective on both sides
- Glass: sapphire, convex, antireflective
- Crown: screwed
- Water-resistant: 12 bar
- Case diameter: 44 mm
- Case height: 15 mm
- Aquatimer Chronograph "Cousteau Divers" in stainless steel with rubber strap: 146 g
- Calibre: 79320
- Vibrations: 28 800/h / 4 Hz
- Jewels: 25
- Power reserve: 44 h
- Winding: automatic
- Estimated Value: 5,000 - 6,500 USD



# Sale Catalog

## Lot 70 - IWC Big Pilot St. Exupery Special Edition Brown Dial IW500422

- Like New in Box
- In collectors condition complete with box and papers
- The Big Pilot's Watch Edition Antoine de Saint Exupéry completes the limited Pilot's Watch collection, which IWC has now dedicated four times to the man who brought passion to his work both as poet and pilot. In a break with the past, this edition is not dedicated to any particular work but to the author's entire literary "œuvre". With its – by now characteristic – tobacco brown dial, initial "A" (for Antoine) adjacent at "9 o'clock", and riveted calfskin strap, this immensely popular watch is recognisable at a glance to connoisseurs and collectors as an exclusive "Saint-Ex". It is also the largest pilot's watch from Schaffhausen and requires a case measuring 46 millimetres in diameter to house the IWC-manufactured 51111 calibre with automatic Pellaton winding and seven-day power reserve. The back of the case comes with an engraving depicting Saint-Exupéry as a military pilot. Together, the 1149 watches in stainless steel, 500 in rose gold, 250 in white gold and a unique piece in platinum, which will be sold to the highest bidder, add up to 1900, the year of the author's birth. The watch is accompanied by Nathalie Des Vallières's biography "L'archange et l'écrivain", produced in a special edition for IWC Schaffhausen.

### FEATURES:

- Limited edition of 1149 watches in stainless steel
- Mechanical movement
- Pellaton automatic winding
- Seven-day power reserve when fully wound
- Power reserve display
- Glucydur\* beryllium alloy balance with high-precision adjustment cams on the balance arms
- Breguet spring
- Date display
- Central hacking seconds
- Convex sapphire glass, antireflective coating on both sides and secured against displacement by drop in air pressure

\* IWC Schaffhausen is not the legal owner of the Glucydur trademark.

### DETAILS:

- Glass: sapphire, convex, antireflective coating on both sides
- Crown: screwed
- Water-resistant: 6 bar
- Case diameter: 46 mm
- Case height: 16 mm
- Weight: Big Pilot's Watch Edition Antoine de Saint Exupéry in stainless steel with calfskin strap: 147 g

### MOVEMENT:

- Calibre: 51111
- Vibrations: 21 600/h / 3 Hz
- Jewels: 42
- Power reserve: 7 days (168 hours)
- Winding: automatic
- Estimated Value: 13,500 - 16,000 USD



**SOLD**

.....

**Lot 71 - IWC Big Pilot Los Angelus Boutique Special Edition with Yellow Markers: Only 15 made**

- This is an IWC Special Edition Big Pilot watch. Rare in that only 15 pieces of this watch were created. Like all 5004 models of Big Pilot watches, this piece has a high beat 7 day automatic movement and has a date feature at 6:00 o'clock. The dial is black with yellow markers and yellow hands. The stainless steel case is 46 mm and has a cool onion crown. It comes on a black alligator strap with stainless steel rivets with a IWC stainless steel deployant (folding) buckle. The large case and riveted strap make this an unmistakable Big Pilot Watch.
- In collectors condition and complete with box and papers.
- Estimated Value: 16,000 - 20,000 USD



.....

**Lot 72 - Panerai PAM 92 Mike Horn Luminor Arktos Special Edition**

- Unique Edition of 500 Pieces
- Like New complete Box and Papers
- Production Years: 2004
- Movement: Calibre OP III
- Power Reserve: 42 hours
- Water Resistance: 300m
- Dial Color: Black
- Bezel: Brushed Steel
- Case: Brushed Steel
- Caseback: Solid
- Crown Protector: Yes
- Crystal: 4.2mm Sapphire
- Diameter: 44mm
- Strap/Bracelet: Rubber
- Lug Width: 24mm
- Estimated Value: 6,500 - 8,500 USD



# Sale Catalog

## Lot 73 - IWC Aquatimer Galapagos Chronograph Limited Production Model 3767, BNIB

- This IWC Aquatimer Chronograph Galapagos Islands Edition watch. Unique with its 44 mm vulcanized rubber coated stainless steel case with a sporty black dial, super luminous hands and index markers, chronograph counters, a unidirectional 60-minute rotating black bezel, and a functional black rubber strap. Features on this watch also include an automatic movement with a chronograph function, day and date. The IWC Aquatimer Chronograph Galapagos Islands Edition watch has a screw-down crown that allows for a water resistance to 120 meters. The caseback on the Galapagos Islands watch is engraved with the giant turtle, the "Geochelone nigra" as a tribute to IWC Schaffhausen's contributions to the Charles Darwin Foundation.
- Condition: Brand new with all documentation and papers
- Brand: IWC Aquatimer Chronograph Galapagos Islands Edition
- Model Number: IW376705
- Dial: Black & White
- Size: 44mm    Strap: Rubber    Clasp: Deployment
- Movement: Swiss Automatic
- Warranty: Ltd. 2 year warranty Int'l
- Movement: Mechanical chronograph Self-winding with 44-hour power reserve. Date and day display, Small hacking seconds.
- Bezel: Mechanical external rotating.
- Special Features: Luminescent elements on hands, dial and external rotating bezel
- Crystals: Sapphire glass, antireflective coating on both sides.
- Bracelet quick-change system
- Estimated Value: 5,500 - 7,500 USD



## Lot 74 - IWC Portuguese FA Jones Skeleton Platinum Model IW5442-05 Limited Edition of 50 Units

- IWC Portuguese FA Jones Skeleton
- Collectors condition with box & papers.
- Model #: IW544205
- Collectors condition with box and papers.
- Measures 43 mm
- Limited edition of 50 watches in platinum. Hand-made Jones 98290 calibre, Beryllium alloy balance with precision-adjustment cams on the balance arms. Water-resistant to 30 meters.
- The IWC Portuguese family of watches pays tribute to the remarkable seafarers of Portugal, but this particular Portuguese is a tribute to the founder of IWC, F.A. Jones. This limited edition skeleton watch is equipped with the hand-wound IWC Calibre 98910 movement.
- The unique IWC Portuguese F A Jones Model # 544205 (IW5442-05) is a 50-piece limited edition dedicated to Mr. F. A. Jones, the founder of IWC company. This timepiece features a re-issue of the first movements used & developed by IWC. The skeleton dial & mechanical movement of IWC Jones 544205 shows each component is beautifully hand-engraved & decorated. This watch also has a small seconds sub-dial at the 6 o'clock position. The IWC F. A. Jones 544205 comes in 43-mm platinum case and black crocodile leather strap. This men's watch has approximate power reserve of 46 hours and is water-resistant down to 30 meters (100 feet).
- Estimated Value: 50,000 - 58,000 USD



## Lot 77 - Audemars Piguet Royal Oak Offshore Diver Black Dial ISO approved

- Mint - Box and Papers
- This is the new AP Royal Oak Offshore Diver. It features an in-house AP 3120 caliber movement. The movement runs at 21,600 vph and has 40 jewels, 278 parts and a 22-carat gold oscillating weight. The power reserve is 60 hours. Water-resistance is 300 meters. The case is stainless steel (42 x 13.75mm). The strap is rubber, with a stainless steel buckle. The dial features a sporty black "Méga Tapisserie" motif and applied grey hour-markers with luminescent coating. The hour and minute hands are faceted white gold and a luminescent coating.
- It has a rotating inner bezel which is a great feature. AP decided to use an inner bezel that is controlled via the screw-down crown at 10 o'clock. You have to unscrew the crown in order to adjust the inner bezel, which features a 60-minute diving scale. This design allows the wearer to set the dive time, with no risk of unintentionally adjusting the bezel.
- More cool dynamics: Water tightness and resistance to salt water, Anti magnetic property, resistance to shocks and to thermal variations, Resistance to external forces
- Technical Specifications: Reference: 15703ST.OO.A002CA.01
- Stainless steel case
- Water-resistant to 300 metres
- Movement: Proprietary Calibre 3120, self winding
- Total diameter : 26.60 mm
- Casing diameter: 11.5 lignes (26 mm)
- Thickness: 4.25 mm
- 40 jewels
- 278 parts
- 22-carat gold oscillating weight
- Up to 60-hour power reserve
- Cadence of the balance: 21,600 vibrations per hour
- Variable-inertia balance with eight inertia-blocks and flat balance-spring
- Geneva-type mobile balance-spring stud holder
- Three-position winding stem
- Finishing: all parts finely decorated; mainplate circular-grained; bridges rhodium-plated, chamfered, snailed and adorned with Côtes de Genève. Diamond-polished jewel sinks; wheels with chamfered spokes and diamond-polished jewel sinks; chamfered screw rims and slots
- Oscillating weight engraved with the AP monogram and the Audemars and Piguet family crests
- Case: Stainless steel, Black rubber crowns, Diameter: 42 mm. Thickness: 13.75 mm, Back with medallion bearing the legend Royal Oak Offshore Water-resistant to 300 metres
- Dial: Black with exclusive "Méga Tapisserie" motif. Inner rotating ring with diving scale, Applied grey hour-markers with luminescent coating Facetted white gold hour and minute hands with luminescent coating
- Strap: Black rubber with oversized stainless steel pin buckle
- Functions: Hours and minutes, Dive-time measurement, Date
- Estimated Value: 13,500 - 16,000 USD



# Sale Catalog

---

## Lot 76 - Audemars Piguet Sydney to Hobart Royal Oak LTD

- RoyalOak 15070ST.0.0789ST.01
- Very rare 36 mm stainless steel on bracelet with unique blue dial.
- Limited Edition of 20 pieces.
- Excellent condition with box and papers
- Estimated Value: 17,500 - 20,000 USD



## Lot 78 - Audemars Piguet Millenary Rose Gold w Date

- Like New in Box
- Model Number: 15320or.oo.d093cr.01
- Series: G
- Movement: Automatic Self Winding
- Dial Color: Silver/White
- Function: Hours, Seconds, Date
- Crystal: Sapphire, Scratch Resistant
- Case Material: Solid 18K Pink Gold
- Case Back: Screw In
- Case Diameter: 45 mm (1.77 in)
- Crown: Push In
- Bracelet Material: Crocodile
- Bracelet Clasp: Rose Gold AP Deployant
- Water Proof: 20 Meter (65 feet)
- Country of Origin: Switzerland
- Estimated Value: 15,500 - 19,000 USD



## Lot 79 - Audemars Piguet Royal Oak Pride of China Special Ed

- Audemars Piguet Royal Oak Steel & Rose Gold Pride of China White Dial Special Edition, Never worn and complete with box and papers.
- Estimated Value: 18,000 - 21,000 USD



.....

## Lot 80 - Audemars Piguet Royal Oak Offshore Grand Prix Carbon Special Edition

- Brand New in Box
- References: 26290IO.OO.A001VE.01
- Forged carbon case, forged carbon and black ceramic bezel, blackened titanium crown, black ceramic and titanium pushpieces, titanium pushpiece guards, titanium exhibition case-back fitted with a sapphire crystal- Limited edition of 1750
- Movement Calibre: 3126/3840 selfwinding
- Total diameter: 29.94 mm (1 31/4 lignes)
- Casing diameter: 26 mm
- Thickness: 7.16 mm
- 59 jewels
- 365 parts
- Up to 60-hour power reserve
- Cadence of the balance: 21,600 vibrations per hour
- Variable-inertia balance with eight inertia-blocks and flat balance-spring
- Geneva-type mobile balance-spring stud-holder
- Three-position winding crown
- Finishing: all parts meticulously decorated; mainplate circular-grained; bridges rhodium-plated, chamfered, snailed and adorned with a Côtes de Genève motif. Diamond-polished jewel sinks; wheels featuring chamfered arms and diamond-polished sinks, chamfered screw slots 22-carat gold oscillating weight partially blackened and decorated with two scoops
- Dials: Black with central red negative-printed exclusive "Méga Tapisserie" motif in eloxed aluminium, anthracite small seconds counter (at 12 o'clock), silvered and yellow 30-minute counter (at 9 o'clock), silvered and black 12-hour counter (at 6 o'clock), yellow eloxed aluminium flange
- Functions: Hours and minutes, Small seconds, Chronograph with central seconds hand, 30-minute and 12-hour counters, Flange with tachometric scale, Date
- Powered by the robust 3126/3840 selfwinding in-house caliber (the same movement that powers the current Royal Oak Offshore line). The case is 44x15.65 mm and features the inscription "Royal Oak Offshore Grand Prix -Limited Edition" engraved on the solid case back. The straps are made of a cool blend of black calfskin and alcantara, hand-sewn with alcantara inserts and edges. The pin buckle comes in bead blasted titanium
- Estimated Value: 39,000 - 44,000 USD



# Sale Catalog

---

## Lot 81 - Panerai PAM 180 White Gold w Carbon Dial 44 mm

- This time piece is a White Gold 44 mm Case with patented locking crown. The dial is a fantastic black carbon dial with silver outlined numerals. The numerals have the appearance of floating on the dial. IMHO, this is the coolest dial of any watch I have seen. It has an automatic self winding movement with a sub second hand and date functions. It has the patented locking crown and is complete with box and papers.
- Movement: automatic mechanical, exclusive Panerai OP III calibre, 13¼ lignes, 21 jewels. Cotes de Genève decoration on the bridges. PANERAI personalised oscillating weight. Glucydur® balance, 28,800 alternations/hour.
- Incabloc® anti-shock device.
- Power reserve 42 hours.
- Chronometer Certificate (C.O.S.C.).
- Functions: hours, minutes, small seconds, date.
- Case: diameter 44 mm, 18ct white gold
- Bezel: 18ct white gold
- Back: screw, gold
- Device protecting the crown: (registered Trade Mark) 18ct white gold
- Crystal: sapphire, formed of corundum, 3.5 mm thick, magnifying lens over the date at 3 o'clock. Anti-reflective coating.
- Water-resistance: 300 meters.
- Strap: alligator with PANERAI personalised buckle.
- Estimated Value: 15,500 - 17,500 USD



---

## Lot 82 - Panerai PAM 191 60 mm Compass on Leather Strap LTD

- Never Worn with Box & Papers
- Unique edition of 300 units.
- PAM 00191
- Functions: compass.
- Case: in titanium, diameter 60 mm. Plexiglas® dome 50 mm in diameter, 23 mm thick, luminous lubber-line integrated in the Plexiglas®. The liquid contained inside the capsule is petroleum-based.
- Bezel: rotatable bidirectional bezel in titanium, with 144 engraved divisions, each of 2,5°.
- Dial: black with luminous Arabic numerals and hour markers. 0-360 grades scale.
- Water resistance: 100 metres.
- Strap: PANERAI personalised leather strap and brushed steel buckle. Supplied with a second strap made of technical synthetic material for professional use.
- Estimated Value: 3,500 - 5,500 USD



.....

## Lot 83 - Panerai PAM 193 Depth Meter Gauge Submersible Professional Instrument Watch

- This watch is in very good condition. There are no dents, ding or major scratches. There are some hairline marks on the bezel, but nothing major.
- Complete with box and papers.
- Movement: Automatic mechanical, exclusive Panerai OP XV calibre, 13¼ lignes, 21 jewels, Glucydur® balance, 28.800 alternations/hour. Incabloc® anti-shock device. Power reserve 42 hours. Côtes de Genève decoration on the bridges. Panerai personalized oscillating weight. Chronometer Certificate (C.O.S.C.). Depth-gauge electronic module with Metas individual certificate.
- Functions: Hours, minutes, small seconds. Depth gauge functions: indication of the maximum depth reached during the most recent dive, indication of the amount of battery power left, depth indication during a dive.
- Case: Diameter 47 mm, titanium. Brushed steel push button at 10 o'clock for the depth gauge functions. Device protecting the crown (protected as a Trademark) in brushed steel.
- Bezel: Brushed steel anti-clockwise unidirectional rotating bezel with graduated scale for measuring the duration of immersion and ratchet click at minute intervals, applied polished steel index.
- Back: Screw, titanium.
- Dial: Black with luminous Arabic numerals and hour markers. Depth gauge scale on the outer part of the dial, with three different scales of accuracy:
  - from 0 to 20m
  - from 20m to 60m
  - from 60m to 120m
- Crystal: Sapphire, made from corundum, 3 mm thick. Anti-reflective coating.
- Water resistance: 120 meters.
- Strap: Panerai personalized rubber strap and brushed steel large-size buckle. Supplied with a steel screwdriver and a second interchangeable strap for diving.
- Estimated Value: 11,000 - 14,000 USD



# Sale Catalog

---

## Lot 84 - Panerai PAM 207 Power Reserve Blue Slate Dial Special Edition for Sincere Jewelers 50 pcs

- Like New in Box
- This is a stunning polished stainless steel 44 mm Luminor Marina Panerai watch with a power reserve function and a blue dial. This is the only polished stainless steel model with a blue dial. It was a Special Limited Edition made for Sincere Jewelers in Singapore.
- ONLY 50 Units
- Making this one of the lowest production Panerai watches ever created
- The indicator is over the 5 o'clock our giving this watch a unique look. The unique blue dial also gives this watch a look only found on this Panerai model. This model has the patented locking crown giving it the unmistakable Panerai flair. It comes on a dark blue alligator strap with an OEM folding "deployant" buckle. You will also enjoy the second OEM black rubber dive strap. Although very rare, it would still make a great daily wear. The self winding automatic movement with a sub second hand, date feature and power reserve function of 42 hours and comes with a pearwood special presentation box with parchment scrolls and all of its papers.
- In collectors condition complete with box and papers
- Movement: automatic mechanical, exclusive Panerai OP IX calibre, 13¼ lignes, 21 jewels, Côtes de Genève decoration on the bridges. PANERAI personalized oscillating weight. Glucydur® balance, 28,800 alternations/hour.
- Incabloc® anti-shock device.
- Power reserve 42 hours.
- Chronometer Certificate (C.O.S.C.).
- Functions: hours, minutes, small seconds, date, power reserve.
- Case: diameter 44 mm, AISI 316L polished steel.
- Bezel: steel.
- Back: screw, steel.
- Device protecting the crown: (protected as a Trade Mark) steel.
- Crystal: sapphire, formed of corundum, 2.5 mm thick, magnifying lens over the date at 3 o'clock. Anti-reflective coating.
- Water-resistance: 300 meters.
- Strap: alligator with PANERAI personalized adjustable buckle.
- Bracelet: integrated with the case and made up of links, each consisting of two parts, one titanium and one steel, overlapped and screwed.
- Estimated Value: 10,000 - 13,000 USD



.....

### Lot 85 - Panerai PAM 212 Chronograph 1950 case

- Luminor 1950 Chrono Flyback
- Never Worn with Box & Papers
- Panerai PAM 212 Flyback Chronograph 1950 case
- The 44 mm stainless steel case, locking crown and flyback function make it one of the most desirable Panerai watches available. It has the patented locking crown and the newly introduced historic style 1950 case. It comes on a kevlar strap with a double button deployant buckle.
- Complete with box and papers, this piece is Like New complete with box & papers.
- Movement: automatic mechanical, Panerai OP XIX calibre, 13¼ lignes, 30 jewels, Glucydur® balance, 28,800 alternations/hour, Incabloc® anti-shock device. 42 hours power reserve. Côtes de Genève decoration for bridges and oscillating weight, burnished blued screws. Chronometer Certificate (C.O.S.C.).
- Functions: hours, minutes, seconds. Flyback chronograph with 2 counters, tachymeter scale.
- Case: diameter 44 mm, brushed steel. Brushed steel push buttons for the chronograph functions at 2 and 4 o'clock. Bezel: polished steel.
- Back: see-through sapphire crystal.
- Device protecting the crown: (registered Trade Mark) brushed steel.
- Crystal: sapphire, made from corundum, 2 mm thick. Anti-reflective coating.
- Water-resistance: 100 meters.
- Strap: PANERAI personalised calf strap with carbon fibre pattern and steel adjustable buckle.
- Supplied with a steel screwdriver and a second interchangeable rubber strap.
- Estimated Value: 8,000 - 9,500 USD



**SOLD**

.....

### Lot 86 - Panerai PAM 214 Rattrapante

- 45mm Radiomir Rattrapante
- Similar to last years special edition 45 mm Radiomir with a chronograph rattrapante function.
- This watch is Like New with Box & papers.
- It has a 45 mm stainless steel Radiomir Case with a black dial and triple button Rattrapante function. You will also enjoy the see through exhibition back. It is on a beautiful brown alligator OEM Panerai strap that tapers to its stainless steel Panerai deployant buckle.
- Movement: automatic mechanical, Panerai OP XVIII calibre, 13¼ lignes, 31 jewels, Glucydur® balance, 28,800 alternations/hour, Incabloc® anti-shock device, double column wheel. Power reserve 42 hours. Côtes de Genève decoration for bridges and oscillating weight, burnished blued screws. Chronometer Certificate (C.O.S.C.) Functions: hours, minutes, seconds. Split-seconds chronograph with 2 counters, tachymeter scale. Case: diameter 45 mm, polished steel with removable wire loop strap attachments (patented). Winding crown personalized OP. Polished steel push buttons for the chronograph functions at 2 and 4 o'clock. Button for the split-second function at 8 o'clock. Bezel: polished steel. Back: see-through sapphire crystal. Crystal: sapphire, made from corundum, 1.9 mm thick. Anti-reflective coating.
- Water-resistance: 100 metres.
- Strap: Panerai personalized alligator strap and polished steel adjustable buckle.
- Estimated Value: 7,800 - 9,500 USD



# Sale Catalog

## Lot 87 - Panerai PAM 219 Luminor Base Model Destro Sandwich Dial 44 mm

- This is a destro (left handed) model Panerai in 44 mm polished stainless steel case. The two layer sandwich dial and see through back are both truly unique.
- Never Worn with Box & Papers
- Estimated Value: 5,000 - 6,500 USD



## Lot 88 - Panerai PAM 221 Luminor Marina Auto Date on bracelet PVD coated, 44 mm

- Panerai PAM 221 Luminor Marina Auto Date on bracelet. The watch and bracelet have been PVD coated by a professional company that does a wonderful job. Panerai does not offer this model with a black PVD coating. This is very unique.
- The watch and bracelet are in like new condition. The bracelet has not been worn since it was coated.
- Complete with box and papers.
- Estimated Value: 5,500 - 8,000 USD

**SOLD**



## Lot 89 - Panerai PAM 233 L GMT 8 Day Mechanical Movement 1950 case 44 mm

- Never Worn with Box & Papers
- This is Panerai's first Luminor with the locking crown to hold their in house 8 day movement. It also has the GMT function and has a 44 mm stainless steel 1950 style case. It comes on a black leather "tunnel" strap that is only found on this model. This is the first model with a Panerai made in house movement. True to Panerai's roots, it is mechanical but last for 8 days. Paying respect to the Angelus 8 day movement found in some vintage Panerai models, this is one great movement. The exhibition back shows off this movement.
- Movement: hand-wound mechanical, Panerai Calibre P.2002/1, completely manufactured by Panerai, 13¾ lignes, 6.6 thick, 21 jewels, 8-day power reserve, 3 spring barrels, Glucydur® balance, 28,800 alternations/hour (4 Hz). KIF Parechoc® anti-shock device.
- Functions: hours, minutes, seconds, date, second time zone, 24h indicator, horizontal power reserve indicator, second reset.
- Case: diameter 44 mm, brushed steel
- Bezel: polished steel
- Back: see-through sapphire crystal.
- Device protecting the crown: (protected as a Trade Mark) brushed steel.
- Crystal: sapphire, made from corundum, 2 mm thick. Anti-reflective coating.
- Water-resistance: 10 bar (~100 meters).
- Strap: calf with Panerai personalized steel large-size buckle
- Estimated Value: 10,500 - 12,500 USD



.....

#### Lot 90 - Panerai PAM 24 M Submersible Auto Date 44 mm

- This is the newest L series model. True to historic roots, this time piece is a durable under water dive watch. It has a stainless steel 44 mm case with a black dial. The steel bezel rotates and is also stainless steel with a brushed finish. It comes on a Panerai OEM rubber dive strap and comes with a second Panerai dive strap (velcro).

**SOLD**

- Never Worn with Box & Papers
- Specifications:
- It is based on the Valjoux 7750-P1 and features 21 jewels Panerai personalization on the bridges and rotor and Glucydur balance
- 28,800 VPH
- Incabloc shock protection
- 42 hours power reserve
- Estimated Value: 5,000 - 6,250 USD



.....

#### Lot 91 - Panerai PAM 270 GMT 10 Day Movement w 1950 case

- Never Worn with Box & Papers
- This is an automatic 44 mm stainless steel Luminor GMT watch with Panerai's new in house 10 day movement. It has a black two layer "sandwich" dial with a 10 day power reserve indicator just above the 6 marker. You will also appreciate the "leaf" sub second hand and date feature that are easy to read. This model also has a GMT feature so that you can keep track of time in more than one time zone.
- Comes on an OEM brown alligator strap with white stitching on a Pre Vendom tang buckle.
- Water resistant to 100 meters, 2 mm thick sapphire crystal and a date function.
- Complete with box and papers.
- Movement: automatic mechanical, Panerai calibre P.2003, completely manufactured by Panerai, 13¾ lignes, 25 jewels, 10-day power reserve, 3 spring barrels, Glucydur® balance, 28,800 alternations/hour. KIF Parechoc® anti-shock device. Functions: hours, minutes, seconds, date, second time zone, 24h indicator, horizontal power reserve indicator, second reset.
- Base: diameter 44 mm, brushed steel.
- Bezel: polished steel.
- Back: see-through sapphire crystal.
- Device protecting the crown: (protected as a Trade Mark) brushed steel.
- Crystal: sapphire, made from corundum, 2 mm thick. Anti-reflective coating.
- Water-resistance: 100 metres.
- Strap: alligator with Panerai personalized steel large-size buckle.
- Estimated Value: 12,000 - 15,000 USD



# Sale Catalog

## Lot 92 - Panerai PAM 275 Stainless Steel Luminor 8 day Monopulsante

- This is an automatic 44 mm stainless steel Luminor single button chronograph watch with Panerai's new in house 8 day movement. It has a black two layer "sandwich" dial with an 8 day power reserve indicator just above the 6 marker. You will also appreciate the "leaf" sub second hand and day/night feature that are easy to read.
- Comes on an OEM black alligator strap with white stitching on a Pre Vendom tang buckle. Water resistant to 100 meters, 2 mm thick sapphire crystal and a date function.
- This piece has never been worn and is complete with box and papers
- Movement: hand-wound mechanical, Panerai Calibre P.2004/1 or P.2004 calibre, completely manufactured by Panerai, 13¾ lignes, 8.2 thick, 29 jewels, 8-day power reserve, 3 spring barrels, Glucydur® balance, 28,800 alternations/hour. KIF Parechoc® anti-shock device.
- Functions: hours, minutes, seconds, second time zone, 8-day power reserve, 24h indicator, second reset, horizontal power reserve indicator, single-button chronograph.
- Case: diameter 44 mm, brushed steel, brushed titanium, or black ceramic. Button for the chronograph function at 8 o'clock.
- Bezel: polished steel, polished titanium, or black ceramic. Back: see-through sapphire crystal.
- Device protecting the crown: (protected as a Trade Mark) brushed steel, brushed titanium, or black ceramic.
- Crystal: sapphire, made from corundum, 2 mm thick. Anti-reflective coating.
- Water-resistance: 100 metres.
- Strap: alligator with Panerai personalized brushed steel or brushed titanium large-size buckle, or leather strap with Panerai personalized large size titanium buckle with special hard black coating.
- Estimated Value: 14,500 - 16,500 USD



## Lot 93 - Panerai PAM 285 Submersible 2500 meter 47 mm Special Ed of 250

- In collectors condition complete with box and papers
- PAM00285
- Movement: automatic mechanical, Panerai OP III calibre, 13¾ lignes, 21 jewels, monometallic Glucydur® balance making 28.800 alternations/hour, Incabloc® anti-shock device. Power reserve 42 hours. Chronometer certificate (C.O.S.C.).
- Functions: hours, minutes, small seconds, date, calculation of immersion time.
- Case: diameter 47 mm, brushed titanium. Helium valve.
- Bezel: brushed steel anti-clockwise uni-directional rotating bezel with graduated scale for measuring the duration of immersion and rauche click at minute intervals.
- Back: screw, titanium.
- Device protecting the crown: (protected as a Trade Mark) in brushed steel.
- Dial: black with luminous Arabic numerals and hour markers. Small seconds dial at 9 o'clock. Date at 3 o'clock.
- Crystal: sapphire, formed of corundum, 5,9 mm thick. Anti-reflective coating.
- Water resistance: 2500 metres.
- Strap: Panerai personalized rubber strap and large size brushed steel buckle. Supplied with a steel screwdriver and a second interchangeable strap.
- Estimated Value: 11,000 - 13,000 USD



.....

#### Lot 94 - Panerai PAM 287 Radiomir Black Seal Automatic w Date

- This is the newest model from the "Black Seal" line of Panerai watches. It has a large 45 mm case, an automatic self winding movement and a date feature. The small sub second hand and dial at 9:00 give this watch tons of character. It comes on a black alligator strap with white stitching.
- Never worn complete with box and papers.
- Movement: automatic mechanical, Panerai OP III calibre, 13¼ lignes, 21 jewels. Côtes de Genève decoration on the bridges. PANERAI personalised oscillating weight. Glucydur® balance 28,800 alternations/hour. Incabloc® anti-shock device. Power reserve 42 hours. Chronometer Certificate (C.O.S.C.).
- Functions: hours, minutes, small seconds, date.
- Case: diameter 45 mm, polished steel with removable wire loop strap attachments (patented). Winding crown personalized OP.
- Bezel: polished steel.
- Back: screw, steel.
- Crystal: sapphire, made from corundum, 1.9 mm thick, magnifying lens at 3 o'clock. Anti-reflective coating. Water-resistance: 100 metres.
- Strap: Panerai personalised alligator strap and polished steel adjustable buckle.
- Estimated Value: 5,000 - 6,500 USD



.....

#### Lot 95 - Panerai Pam 28A Tritium Dial Silver Arrow

- Model: Luminor Power Reserve PVD
- Production Years: 1998-1999
- Movement: Soprod 9040
- Water Resistance: 300m
- Dial Color: Black Hobnail
- Bezel: PVD Steel
- Case: PVD Steel
- Caseback: Solid
- Crown Protector: Yes
- Crystal: 2.5mm Sapphire w/Magnifier
- Diameter: 44mm
- Strap/Bracelet: Original Brown leather and Rubber Dive Strap
- Lug Width: 24mm
- This is one of the finest 28A Panerai watches probably in existence. The watch has no scratches and the straps are in 95% condition.
- The watch is complete with box and papers.
- Estimated Value: 17,000 - 19,000 USD



# Sale Catalog

## Lot 96 - Panerai PAM 249 Radiomir California Dial 47 mm Special Edition 1936

- Like New Collectors condition with Triple Box and Papers.
- **Movement:** hand-wound mechanical, exclusive Panerai OP X calibre, 16½ lignes, 17 jewels. Glucydur® balance with Nivarox® I spring, 21,600 alternations/hour. Incabloc® anti-shock device. Power reserve 56 hours. Côtes de Genève decoration on the bridges.
- **Functions:** hours and minutes.
- **Case:** diameter 47 mm, polished steel with removable wire loop strap attachments (patented). Winding crown personalized Panerai.
- **Bezel:** polished steel.
- **Display Back:** sapphire crystal.
- **Dial:** black with luminous hour markers and Arabic and Roman numerals.
- **Crystal:** PLEXIGLAS, 2 mm thick.
- **Water resistance:** 30 metres.
- **Strap:** Never worn leather with PANERAI personalized steel sewn-in buckle.
- **Estimated Value:** 13,000 - 14,500 USD



## Lot 97 - Panerai Pam 40 Luminor Marina Titanium

- **Production Years:** 1999
- **Coplete Box/Papers/Straps**
- **Movement:** Calibre OP II
- **Power Reserve:** 56 hours
- **Water Resistance:** 300m
- **Dial Color:** Black Tritium
- **Bezel:** Brushed Titanium
- **Case:** Brushed Titanium
- **Caseback:** Solid
- **Crown Protector:** Yes
- **Crystal:** 3.5mm Sapphire
- **Diameter:** 44mm
- **Strap/Bracelet:** Leather
- **Lug Width:** 24mm
- The Pam40 is one of the rarest production models in existence. Produced in a special run in the B series, this watch was marketed by Panerai to test the waters with Titanium as the PVD watches they sold were proving difficult to maintain on the customers end, and next to impossible to repair on Panerai's end, the vision was brought to fruition later on with the 55, 56, 116, 117, 118, 176 and 177. This model, however, varies from all of the previous watches not only in its scarcity (a mere 200) but also in it's dial, which features the much sought after tritium dial, almost identical (if in fact it isn't) to the 1a dial. This combination makes it an extreme rarity, and a must have for any serious Panerai collector.
- **Estimated Value:** 17,500 – 20,000 USD

**SOLD**



.....

### Lot 98 - Panerai Luminor Marina Boutique Edition New York (PAM 417)

- Limited Edition 150 pieces
- Like New in Box
- Movement: Automatic, Caliber OP II, based on ETA 6497-2, hand-wound, 17 jewels, 21,600 vph, COSC-certified, Swiss Made
- Functions: Hours, minutes, seconds
- Power reserve: 41 hours
- Case material: Stainless steel
- Bezel material: Stainless steel
- Case shape: Cushion
- Bezel shape: Round
- Case size: 44.00 mm
- Dial: Black
- Numerals: Arabic
- Hands: Steel
- Water resistance: 300 meters
- Strap: Leather
- Crystal: Sapphire
- Case back: Solid, engraved
- The boutique edition timekeeper is equipped with a brown leather strap with contrasting beige stitching. It includes the Statue of Liberty engraved back, a tritium look dial, and the famous "Pig" logo.
- Estimated Value 7,500 – 9,500 USD

**SOLD**



.....

### Lot 99 - Panerai Luminor Power Reserve Destro PAM 123

- Polished Stainless Steel in 44 mm with offset power reserve at 2:00 o'clock
- Panerai Luminor Power Reserve Destro PAM 123
- Like New in Box
- Box and Papers (No Movement Sticker)
- Production Years: 2002-2004
- Movement: Calibre OP IX
- Power Reserve: 42 hours
- Water Resistance: 300m
- Dial Color: Black
- Bezel: Polished Steel
- Case: Polished Steel
- Caseback: Solid
- Crown Protector: Yes
- Crystal: 2.5mm Sapphire w/Magnifier
- Diameter: 44mm
- Strap/Bracelet: Leather
- Lug Width: 24mm
- Estimated Value: 11,000 - 13,500 USD



# Sale Catalog

---

## Lot 100 - IWC Portuguese Handaufzug Silver White Dial Model IW545405

- Never worn complete with box and papers.
- 44 mm Polished stainless steel case with fine brushed/satin finished edges.
- Series Portofino
- Hand Wound Mechanical movement.
- Exhibition see through case back.
- Black Alligator strap on tang buckle.
- Water Resistant to 30 meters (99 feet).
- Case thickness 10 mm.
- Crystal Scratch Resistant Sapphire.
- Silver / White dial with a grey sub-dial.
- Applied Rose Gold colored Arabic Numeral hour markers.
- Printed black minute track with applied Rose Gold indexes on each 5 minute marker.
- Elegant Rose Gold leaf-shaped hands.
- Small seconds sub-dial in a contrasting grey color. With white printed seconds track markers, the "60" marker painted in a contrasting red color.
- IWC calibre 98295, beats at 18,000 vph, contains 18 jewels & has an approximate Power Reserve of 46 hours. Movement decorated with Coates de Geneva (Geneva stripes). This watch is also known as IW545405, 5454-05, 545405
- Estimated Value: 6,500 – 7,800 USD



---

## Lot 101 - Rolex Milgauss

- **Pre Owned: Box/Papers**
- **Model: 116400**
- **Series: Milgauss**
- **Style (Gender): Mens**
- **Case Material: Stainless Steel**
- **Dial Color: White with orange markers and accents**
- **Movement: Automatic COSC**
- **Engine: Rolex Caliber 3131**
- **Functions: Hours, Minutes, Sweep Center Seconds**
- **Crystal Material: Sapphire Crystal, flat with raised edges**
- **Case Diameter: 40.0 mm**
- **Case Thickness: 14.0 mm**
- **Caseback: Stainless Steel screw-locked with Rolex and Milgauss engraving around case back edges**
- **Bezel Material: Stainless Steel, Polished**
- **Bezel Function: Fixed**
- **Water Resistance: 100m / 330ft (suitable for swimming and shallow snorkeling; unsuitable for diving)**
- **Crown Material: Screw-locked, fluted, stainless steel with Rolex Crown logo**
- **Calendar: None**
- **Watch Bracelet/Strap Material: Stainless Steel with Rolex logo**
- **Watch Clasp Material: Triple Folding Clasp with logo, divers extension.**
- **Additional Info: Based on an original design from the 1950s, the Rolex Milgauss is resistant to the extremes of magnetic environments. The automatic movement is protected by a magnetic shield mounted inside the case, providing resistance to magnetic fields up to the magnetic flux density of 1000 gauss. This timepiece is thus indispensable for scientists, engineers, and doctors - professionals who work close to devices that generate strong magnetic fields.**
- **Estimated Value: 5,800 – 7,000 USD**



# Sale Catalog

## Lot 102 - Rolex Deep Sea

- Pre Owned: Box/Papers
- S: 116660V
- Case Material: Stainless Steel
- Dial Color: Black
- Movement: Automatic
- Engine: Rolex 3135 with Parachrom Hairspring
- Functions: Hours, Minutes, Center Seconds, Date
- Crystal Material: Sapphire - Anti-Reflective (slightly domed, 5.5mm thick)
- Case Diameter: 44 mm
- Case Thickness: 17.68 mm
- Caseback: Titanium TA6V Grade 5, 3.28mm thick, Vanadium and Aluminum alloys, 4 x stronger than s/steel
- Bezel Material: Black Cerachrom with 60-minute graduations. Flange ring in Biodur 108
- Bezel Function: Unidirectional Rotating
- Mass: 210.0 g
- Water Resistance: 3900m
- Crown Material: Triplock Winding Crown with three gaskets
- Calendar: Automatic Date at 3
- Watch Bracelet/Strap Material: Stainless Steel
- Watch Clasp Material: Glide lock clasp for ratcheted fine adjustments
- Max Wrist Size: 9.0 inches
- Watch Bracelet Width: 16.0 - 21.0 mm
- Additional Info: The new Oyster Perpetual Sea-Dweller DEEPSEA is waterproof to an extreme depth of 3,900 meters (12,800 feet). This next-generation diving watch confirms Rolex's supremacy in the mastery of waterproofing. Entirely developed in-house by Rolex, the Sea-Dweller DEEPSEA is a completely new wristwatch that benefits from several important technical innovations. It is equipped with the newly designed and patented RINGLOCK SYSTEM, which resists the massive pressure exerted by water at extreme depths. It is the first watch with a double extension bracelet system, making it easily adaptable for improved comfort when worn above a diving suit. The Sea-Dweller DEEPSEA's name is a tribute to the Deep Sea Special, the experimental wristwatch prototype that plunged to a depth of 10,916 meters in the Mariana Trench in 1960.
- Estimated Value: 7,000.00 – 8,500.00 USD



**SOLD**

---

### Lot 103 - Rolex Day Date President

- Pre-owned: Box and Papers
- Case Material: Yellow gold
- Bracelet Material: Yellow Gold
- Movement: Automatic
- Case Material: Yellow gold
- Case Diameter: 36.0 mm
- Glass: Sapphire Glass
- Dial: Champaign
- Clasp: Fold Clasp, hidden
- Functions: Date
- Others: Quick Set
- Comments: Oyster/Silver Dial with Raised Baton Hour Markers, Sweep Second Hand, Date Indicator. 18K Yellow Gold Fluted Bezel, Double Quickset Movement, and sapphire Crystal.
- Matching 18K Yellow Gold Rolex "President" Hidden Clasp Bracelet.
- Model Number: 18238.
- Case Diameter: 36mm.
- Circa: 1990's Production.
- Estimated Value: 7,000 – 9,000.00

**SOLD**



---

### Lot 104 - U-Boat U-42 Edizione Speciale

- 53mm Titanium Submersible Instrument
- LTD of 999 units:
- Pre Owned: Excellent condition complete with box and papers.
- U-Boat watches are an ode to professional instruments and instrumentation. Italo Fontana is the founder and designer of U-Boat watches. An important source of inspiration for Italo's watchmaking career is a concept that his grandfather had proposed to the Italian Navy in 1942. The numerals and left handed configuration of U-Boat watches spurred from these drawings and were originally revived in 2009 by the giant, 65mm, U-1942. The limited edition U-42, unveiled in March 2010, is based on the U-1942 but scaled down to a 53mm size and to a more accessible price range.
- The U-42 is an automatic-winding watch. It runs on "Meccanica Svizzera" or Swiss mechanics. The movement that the watch runs on is dubbed the U-28 calibre. It is the first movement to be given a U-Boat calibre denomination. It offers a 40 hour power reserve. Undoubtedly it is provided by one of the major manufacturers of high-grade movements in Switzerland, probably ETA or Sellita, and is reconfigured to accommodate the left-handed crown configuration and the added torque provided by the huge crown.
- Estimated Value: 5,000 – 7,000 USD



# Sale Catalog

---

## Lot 105 - Tudor Heritage Chronograph Monte Carlo Black Dial

- **Description:** Tudor Heritage Chronograph, Never Worn in Box with Papers, Additional Strap and all Booklets and Manuals, Automatic, 42mm Case, Black Dial with Gray Sub Dials, Subsidiary Seconds at 3:00, Date at 6:00, 45 Minute Register at 9:00, Rotating Bezel, Screw Down Crown, Screw Back, Sapphire Crystal, Luminous Hands and Markers.
- **Never worn:** with box and papers.
- **Estimated Value:** 4,200 - 5,500 USD



## Lot 106 - Decima Mas Strumento XZ221 Titanium 1000 meter Dive Watch

- Decima MasTM Strumento XZ221, is a professional diving instrument as well as timekeeper inspired by the 1988 concept (Subacqueo Stagno 1000 Metri, destined for Military use), designed 2003, developed 2005 and produced 2007, by Time To Time Projects (France) and Ennebi (Italy).
- The XZ221 Strumento is entirely produced at the Ennebi (Italy) laboratory by highly qualified and experienced engineers, as well as artisans and expert operating staff to achieve a high quality level expected by both professional and discerning amateurs. Its production is set at one instrument per day allowing strict manufacturing, precisions and immersion test check list for each singular piece.
- We guarantee that the Strumento XZ221 is manufactured with extreme high levels of precision. Metals, materials, parts, as well as each eye catching details such as finishing, legibility, man operated devices (winding-crown, bidirectional bezel) and engravings are worked to purposely achieve and share the finest craftsmanship representation.
- The Swiss movement calibre F2560 housed in the Strumento XZ221 is chosen for its precision, reliability, durability and resistance to shocks. The movement is mounted in a secure technique allowing further shocks to be absorbed. Final movement adjustments and precision tests are made at Ennebi (Italy) laboratory before and after the movement is fitted into the instrument-case.
- Strumento XZ221-001 Technical Specifications.
- The XZ221-001 is a water-proof instrument, produced and tested for extreme climatic conditions (high and low temperatures, atmospheric vacuum and high pressures).
- Proprietary design; Size: Ø47mm (Ø54mm with the winding-crown), case height 16mm; case-back, bezel, winding-crown and buckle made of grade 5 Titanium microbillé.
- Proprietary auto-blocking bidirectional bezel with preset intervals of 2,5 minutes; Bezel Index at 12 o'clock made in 18K gold. Optional: pantograph engraved rotating bezel.
- Proprietary dial and hands; Dial, hours and minutes hand, hand-painted and filled with luminescent coating (Super Luminova).
- Organic glass (polymer PMMA), 5mm in thickness, mounted mechanically.
- Swiss mechanical movement with automatic-winding, ETA caliber F2560; Functions: hours, minutes, sweeping center seconds; Power Reserve of 40 hours; Frequency 28800 alternations/hour; Incabloc anti-shock system; 25 rubies.
- Water-Resistant to 1000 meters.
- Presented in a personalized and branded exotic wooden box containing: Strumento XZ221-001, 1 fitted Italian calf strap, 2 screw drivers, manual/warranty/service booklet.
- A total production of 1941 Strumento XZ221
- Made and produced in Italy.
- Estimated Value: 3,200 – 4,800 USD



# Sale Catalog

---

## Lot 107 - IWC Portuguese Perpetual Calendar Rose Gold Black Dial Model IW5021-22

- Never worn complete with box and papers
- Solid 18kt Rose Gold case with polished finished bezel & lugs, and fine brushed finished edges.
- Black dial.
- Embossed, raised Rose Gold colored Arabic Numeral hour markers & dot minute markers.
- Elegant leaf shaped polished rose gold hands.
- Perpetual Calendar with year display:
  - Day of the week indicated on the outside perimeter of the sub-dial at the 9 o'clock position.
  - Date indicated on the outside perimeter of the sub-dial at the 3 o'clock position.
  - Month indicated at the sub-dial at the 6 o'clock position.
  - Current year displayed in a full 4 digit format with a window between the 7 & 8 o'clock position.
- Moonphase:
  - Displayed at sub-dial at the 12 o'clock position. Indicated by a rose gold colored full moon display with a rotating black disc above the moon - the disc partially blocks the moon display imitating the wax & wane of the moon.
  - Mirror images of the moon as seen from the northern and southern hemispheres & which deviates from the moons actual progress by a mere 12 seconds per lunar period.
  - A 29.5 day countdown until the new moon.
- Power Reserve Indicator
  - This watch features an impressive 7-Day Power Reserve, indicated by a hand at the center of date sub-dial at the 3 o'clock position.
- Small running seconds hand indicated by a hand at the center of day sub-dial at the 9 o'clock position.
- IWC Caliber 51614, beats at 21,600 vph, contains 62 Jewels & has an approximate power reserve of 7-Days (168 hours) hours.
- Case Material: 18kt Rose Gold
- Dial Color: Black
- Bracelet/Strap: Crocodile Leather Brown
- Clasp Type: Deployant Clasp
- Movement: Automatic
- Screw Down Crown: No
- Crystal: Scratch Resistant Sapphire
- Case Back: Transparent
- Water Resistant: 30m/100ft
- Case Diameter: 44.2mm
- Case Thickness: 15.5mm
- Estimated Value: 24,500 - 30,000 USD



.....

**Lot 108 - IWC Aquatimer Automatic 2000 Titanium Chronograph w rubber strap and ti bracelet IW37191**

- Like new condition complete with box and papers.
- This IWC Aquatimer Automatic 2000 Mens Watch IW371918 features Automatic , Chronograph movement. The Sapphire, Scratch Resistant crystal is beautiful, as is the material from which the watch is made. The bezel of this timepiece is made from Titanium while the bracelet is made from Rubber material. The case material is Titanium and the clasp type is Pin & Buckle. The water resistance is 100 meter (330 feet), and this practical feature, combined with the stunning Black dial makes for an excellent Swiss timepiece.
- Movement Type Chronograph Automatic (self winding) Dial Color: Black
- Calender: Day Date
- Crystal: Sapphire & Scratch Resistant
- Case Material: Titanium
- Case Back: Solid Screw In
- Case Diameter: 44 mm (1.73 in)
- Estimated Value: 3,800 – 5,200 USD



# Sale Catalog

---

## Lot 109 - IWC Aquatimer 2000 White Dial on Rubber Dive Strap Model IW356806

- Never Worn with box and papers
- Brushed finished stainless steel case with polished finished beveled edges.
- White dial with bold applied index hour markers filled with luminescent material.
- Polished steel hands - hour & minute hands filled with white luminescent.
- Black unidirectional bezel with luminescent numbers & luminescent 15 minute zone.
- Strap with quick-change system - spring loaded lever is located on the end of the rubber strap which easily allows for removing/replacing the strap.
- IWC Caliber 30110, beats at 28,800 vph, contains 21 jewels & has an approximate power reserve of 42 hours.
- IWC Aquatimer Automatic 2000 watch, round stainless steel case (44mm diameter, 14mm thickness) with rotating diving bezel and screw-down crown, black rubber strap with quick-change system, white dial with luminescent elements on hands, dial, and rotating bezel, date display at 3 o'clock, 21 jewel Caliber 30110 self-winding mechanical movement with 42 hour power reserve, scratch-resistant sapphire crystal, water-resistant to 2000 meters.
- With its 44-millimetre case and pressure-resistance to 200 bar, the Aquatimer Automatic 2000 is ideally suited for underwater use. The striking external rotating bezel, the hallmark of the current Aquatimer generation, can be turned easily under water, even when wearing gloves. No fewer than six coatings of Super-LumiNova are applied to the underside of the sapphire-glass ring. Thanks to this highly effective luminescent material, the elapsed dive time is clearly visible even in poor lighting conditions.
- Estimated Value: 2,800 – 4,200 USD

