

BASEBALL



Baseball Varsity
Sleeveless Jersey p.26



Baseball Open Hem Pant
p.26



adiZero™ Diamond King
p.28



FANG JERSEY

AD01986

Standard:

- Embroidered adidas brandmark, pro-length and extended drop tail, coverseamed and double-needle hem.

Body Options: Refer to color chart for available colors.

- Pro Mesh (07)
- adi3MESH (87) – Moisture management
- Pro Mock Mesh (79) – Moisture management
- Grey Pinstripes (27) –
(Panels will be solid-colored material, 15 cloth)
- White Pinstripes (08) –
(Panels will be solid-colored material, 15 cloth)
- Heavyweight Poly Warp Knit (15)

Braid Options: Sleeve opening, neck and front, neck only.

- Braid piping (solid color only)
- $\frac{3}{8}$ " braid (1-color, 2-color, 3-color)

Attribution Options:

- Twill
- Embroidery

Sizes: 36-60, Youth Sizes YXS-YXL

- 10% upcharge on 56-58
- 20% upcharge on 60



DERBY JERSEY

AD01984

Standard:

- Embroidered adidas brandmark, pro-length and extended drop tail, coverseamed and double-needle hem.

Body Options: Refer to color chart for available colors.

- Pro Mesh (07)
- adi3MESH (87) – Moisture management
- Pro Mock Mesh (79) – Moisture management
- Grey Pinstripes (27) –
(Panels will be solid-colored material, 15 cloth)
- White Pinstripes (08) –
(Panels will be solid-colored material, 15 cloth)
- Heavyweight Poly Warp Knit (15)

Braid Options: Sleeve opening, neck and front, neck only.

- Braid piping (solid color only)
- $\frac{3}{8}$ " braid (1-color, 2-color, 3-color)

Attribution Options:

- Twill
- Embroidery

Sizes: 36-60, Youth Sizes YXS-YXL

- 10% upcharge on 56-58
- 20% upcharge on 60

HOME RUN PANT – ANKLE LENGTH (AL)

AD01987-AL

Standard:

- Embroidered adidas brandmark, two set-in back pockets, 2.5" knit elastic waistband, brass zipper, coverseamed and double-needle hem, elastic leg opening, 32" inseam (size large).

Body Material Options: Refer to color chart for available colors.

- Grey Pinstripes (27) –
(Panels will be solid-colored material, 15 cloth)
- White Pinstripes (08) –
(Panels will be solid-colored material, 15 cloth)
- Heavyweight Poly Warp Knit (15)

Braid Options: Braid belt loops, braid legs.

- Braid piping (solid color only)
- $\frac{3}{8}$ " braid (1-color, 2-color, 3-color)

Attribution Options:

- Embroidery

Inseam Options: 2" increments.

- Available in 28" through 38" inseam lengths

Sizes: 26-52, Youth Sizes YXS-YXL

- 10% upcharge on 46-48
- 20% upcharge on 50-52



CODE JERSEY

AD01983

Standard:

- Embroidered adidas brandmark, pro-length and extended drop tail, coverseamed and double-needle hem.

Body Options: Refer to color chart for available colors.

- Pro Mesh (07)
- adi3MESH (87) – Moisture management
- Pro Mock Mesh (79) – Moisture management
- Grey Pinstripes (27) – (Panels will be solid-colored material, 15 cloth)
- White Pinstripes (08) – (Panels will be solid-colored material, 15 cloth)
- Heavyweight Poly Warp Knit (15)

Braid Options: Sleeve opening, neck and front, neck only.

- Braid piping (solid color only)
- $\frac{3}{8}$ " braid (1-color, 2-color, 3-color)

Attribution Options:

- Twill
- Embroidery

Sizes: 36-60, Youth Sizes YXS-YXL

- 10% upcharge on 56-58
- 20% upcharge on 60

HOME RUN PANT – RELAXED FIT (RL)

AD01987-RL

Standard:

- Embroidered adidas brandmark, two set-in back pockets, 2.5" knit elastic waistband, brass zipper, coverseamed and double-needle hem, nonelastic leg opening with V-notch, 34" inseam (size large).

Body Material Options: Refer to color chart for available colors.

- Grey Pinstripes (27) – (Panels will be solid-colored material, 15 cloth)
- White Pinstripes (08) – (Panels will be solid-colored material, 15 cloth)
- Heavyweight Poly Warp Knit (15)

Braid Options: Braid belt loops, braid legs.

- Braid piping (solid color only)
- $\frac{3}{8}$ " braid (1-color, 2-color, 3-color)

Attribution Options:

- Embroidery

Inseam Options: 2" increments.

- Available in 28" through 38" inseam lengths

Sizes: 26-52, Youth Sizes YXS-YXL

- 10% upcharge on 46-48
- 20% upcharge on 50-52



NO HITTER JERSEY

AD01988

Standard:

- Embroidered adidas brandmark, pro-length and extended drop tail, coverseamed and double-needle hem, contrast rib-knit neck on 27 and 08 materials. Self-fabric neck on 07, 87, 79 and 15 materials.

Body Options: Refer to color chart for available colors.

- Pro Mesh (07)
- adi3MESH (87) – Moisture management
- Pro Mock Mesh (79) – Moisture management
- Grey Pinstripes (27) – (Panels will be solid-colored material, 15 cloth)
- White Pinstripes (08) – (Panels will be solid-colored material, 15 cloth)
- Heavyweight Poly Warp Knit (15)

Braid Options: Sleeve opening.

- Braid piping (solid color only)
- $\frac{3}{8}$ " braid (1-color, 2-color, 3-color)

Attribution Options:

- Twill
- Screen Print
- Embroidery

Sizes: 36-60, Youth Sizes YXS-YXL

- 10% upcharge on 56-58
- 20% upcharge on 60



LINE DRIVE JERSEY

AD01978

Standard:

- Embroidered adidas brandmark, pro-length and extended drop tail, coverseamed and double-needle hem.

Body Options: Refer to color chart for available colors.

- Pro Mesh (07)
- adi3MESH (87) – Moisture management
- Pro Mock Mesh (79) – Moisture management
- Grey Pinstripes (27) – (Panels will be solid-colored material, 15 cloth)
- White Pinstripes (08) – (Panels will be solid-colored material, 15 cloth)
- Heavyweight Poly Warp Knit (15)

Braid Options: Sleeve opening, neck and front, neck only.

- Braid piping (solid color only)
- $\frac{3}{8}$ " braid (1-color, 2-color, 3-color)

Attribution Options:

- Twill
- Embroidery

Sizes: 36-60, Youth Sizes YXS-YXL

- 10% upcharge on 56-58
- 20% upcharge on 60

HOME RUN PANT – PRO LENGTH FIT (PL)

AD01987-PL

Standard:

- Embroidered adidas brandmark, two set-in back pockets, 2.5" knit elastic waistband, brass zipper, coverseamed and double-needle hem, elastic leg opening, 27" inseam (size large).

Body Material Options: Refer to color chart for available colors.

- Grey Pinstripes (27) – (Panels will be solid-colored material, 15 cloth)
- White Pinstripes (08) – (Panels will be solid-colored material, 15 cloth)
- Heavyweight Poly Warp Knit (15)

Braid Options: Braid belt loops, braid legs.

- Braid piping (solid color only)
- $\frac{3}{8}$ " braid (1-color, 2-color, 3-color)

Attribution Options:

- Embroidery

Inseam Options: 27"

Sizes: 26-52, Youth Sizes YXS-YXL

- 10% upcharge on 46-48
- 20% upcharge on 50-52

LETTER STYLES

PRINT
EMB
TT

X X X

(1) FULL BLOCK:

A B C D E F G H I J K L M N O P Q R S T U V W X Y Z

X X X

(2) PLAIN BLOCK:

A B C D E F G H I J K L M N O P Q R S T U V W X Y Z

X

(3) OUTLINE SOLID BLOCK:

A B C D E F G H I J K L M N O P Q R S T U V W X Y Z

X X X

(4) OUTLINE FANCY BLOCK:

A B C D E F G H I J K L M N O P Q R S T U V W X Y Z

X X X

(5) TIMES BOLD:

A B C D E F G H I J K L M N O P Q R S T U V W X Y Z

X X X

(6) BRUSH SCRIPT:

A B C D E F G H I J K L M N O P Q R S T U V W X Y Z
a b c d e f g h i j k l m n o p q r s t u v w x y z

X X X

(7) LOUISVILLE:

A B C D E F G H I J K L M N O P Q R S T U V W X Y Z

STANDARD NUMBERS

PRINT
TT

X

(8) DALLAS: 4", 5", 6", 7", 8", 10", 12" – One or Two Color

0 1 2 3 4 5 6 7 8 9

X X

(9) DROP SHADOW: 4", 8", 10", 12" – One or Two Color

0 1 2 3 4 5 6 7 8 9

X X

(10) TIMES BOLD: 4", 8", 10", 12" – One or Two Color

0 1 2 3 4 5 6 7 8 9

X X

(11) SHADED HELVETICA: 4", 8", 10", 12" – One or Two Color

0 1 2 3 4 5 6 7 8 9

X X

(12) PRO FULLBLOCK: 4", 6", 8", 10", 12" – One or Two Color

0 1 2 3 4 5 6 7 8 9

ARC STYLES

COLLEGIATE

VERTICAL

COLLEGIATE

HORIZONTAL

COLLEGIATE

REVERSE VERTICAL

COLLEGIATE

SQUEEZED ARC

COLLEGIATE

REVERSE HORIZONTAL

COLLEGIATE

STRAIGHT

SJ

INTERLOCKING

T
S
U

STAIR STEPPING

FABRIC AND COLOR OPTIONS

	White	Black	Blue Grey	S. Grey	Brown	Orange	Cardinal	C.Blue	Dk.Green	Kelly	Gold	Maroon	Navy	Purple	Royal	Scarlet	Veg.Gold
07 CLOTH Pro Mesh																	
87 CLOTH OG Moisture Management, adi3MESH																	
79 CLOTH OG Moisture Management, Pro Mock Mesh																	
27 CLOTH Grey Pinstripes																	
08 CLOTH White Pinstripes																	
15 CLOTH Heavyweight Poly Warp Knit																	

TAIL STYLES



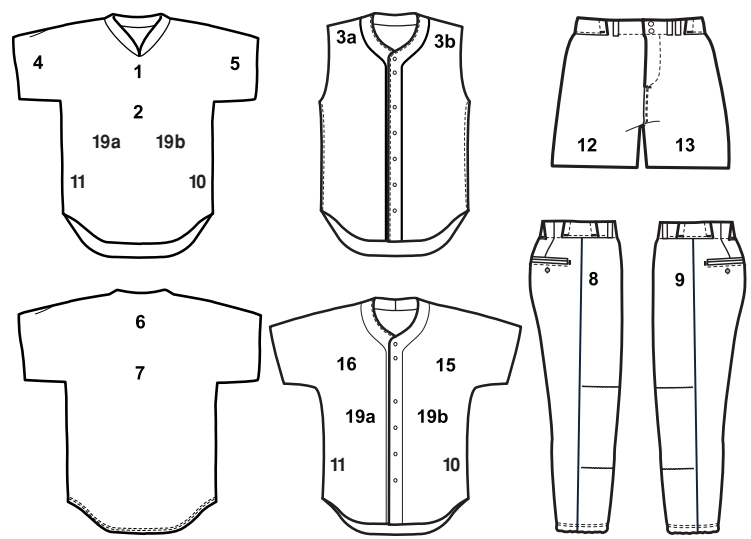
BRAID PATTERNS

1 Color
Pattern A
Braid Piping or 3/8"

2 Equal Stripes
2 Color
Pattern B
3/8"

3 Equal Stripes
T: 2 Color, B: 3 Color
Pattern C, Pattern D
3/8"

LOCATIONS



1. Upper Front (Team Name)
2. Center Front
- 3a. Strap Right
- 3b. Strap Left
4. Right Sleeve
5. Left Sleeve
6. Back Yoke
7. Center Back (Numbers)
8. Right Hip
9. Left Hip
10. Right Side Insert
11. Left Side Insert
12. Right Leg
13. Left Leg
15. Left Chest
16. Right Chest
- 19a. Center Left
- 19b. Center Right

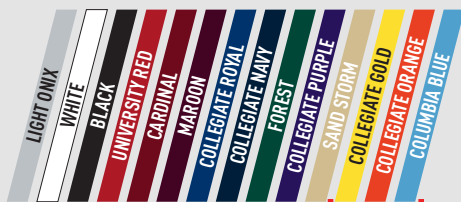
Create Custom Uniforms

Use our miTeam web configurator to outfit your entire team top to bottom. Customize your uniform with your school's colors or start from one of our many inspirations. Go to adidas-team.com or contact your sales representative for ordering details.



1

Customize a miTeam Baseball Short-Sleeve Jersey



Available Nov. 2010

1. Select a base color
2. Select an insert color

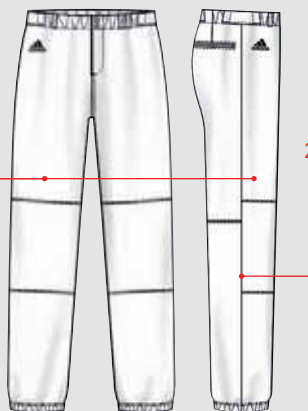


3. Select a sleeve color
4. Select a mesh color

2

Customize matching miTeam Baseball Pants

1. Select a base color
2. Select a contrast color



mi adidas TEAM
CLIMACOOL®

miTeam Baseball Short-Sleeve Jersey \$65.00

S10TMM900

Expected redesign: Spring 2013

Stay cool in the game with this short-sleeve CLIMACOOL® baseball jersey. Full-button placket spaced for team customization. Mesh insets at underarms, down sides and at back neck for ventilation. Drop-tail construction. You can customize your garment in four zones to fit your team's colors. See more at the miTeam section at www.adidas-team.com. **NCAA/NFHS compliant.**

Length: 33" (size large)

100% polyester double knit. 100% polyester mesh.

Sizes: 2XS-4XL

Available: at once

P11651 Custom Colors



mi adidas TEAM
CLIMACOOL®
FORMATION™

miTeam Baseball Pant \$60.00

S10TMM905 / MTH10TMM589

Expected redesign: Spring 2013

CLIMACOOL® knit baseball pant. Center front functional fly. Elastic waistband with two-button closure at center front and belt loops. Jock tag inside center back waist. Reverse-entry welt pockets at back. Double-layer knee construction with FORMOTION™ element at back knee. Entire garment is color customizable. Embroidered adidas brandmark at right front hip. See more at the miTeam section at www.adidas-team.com. **NCAA/NFHS compliant.**

Length: 31" (size large); 34" (open hem)

100% polyester double knit.

Sizes: 2XS-4XL

Available: at once

P11652 Custom Colors (Pro length with elastic cuff)

025582 Custom Colors (Open hem)

Team Explosive Cap
Accessories p.82



CLIMACOOL®

Baseball Varsity Short-Sleeve Jersey \$50.00
S10TMM570

Expected redesign: Spring 2013

CLIMACOOL® short-sleeve baseball jersey. Full-button placket spaced for team customization. Mesh insets at underarms, down sides and at back neck for ventilation. Drop-tail construction. Embroidered adidas brandmark at right chest.

NCAA/NFHS compliant.

100% polyester double knit. 100% polyester mesh.

Length: 33" (size large)

Sizes: 2XS-4XL

Available: at once

P57822 White | White

P56917 Light Onix | White



CLIMACOOL®
FORMOTION™

Baseball Varsity Pant \$50.00
S10TMM578

Expected redesign: Spring 2013

Men's CLIMACOOL® knit baseball pant. Center front functional fly. Elastic waistband with two-button closure at center front with belt loops. Jock tag inside center back waist. Reverse-entry welt pockets at back. Double-layer knee construction with FORMOTION™ element at back knee. Elastic set in hem. Embroidered adidas brandmark at back left hip. **NCAA/NFHS compliant.**

100% polyester double knit.

Inseam: 31" (size large)

Sizes: 2XS-4XL

Available: at once

P57804 White

P56914 Light Onix

Team Program
A-Flex® Cap
Accessories p.81



CLIMACOOL®

Baseball Varsity Sleeveless Jersey \$45.00
S10TMM573

Expected redesign: Spring 2013

CLIMACOOL® sleeveless baseball jersey. Full-button placket spaced for team customization. Mesh insets at underarms, down sides and at back neck for ventilation. Drop-tail construction. Embroidered adidas brandmark at right chest.

NCAA/NFHS compliant.

100% polyester double knit. 100% polyester mesh.

Length: 33" (size large)

Sizes: 2XS-4XL

Available: at once

P57813 White | White

P56916 Light Onix | White



CLIMACOOL®
FORMOTION™

Baseball Open Hem Pant \$50.00
H10TMM589

Expected redesign: Spring 2013

Men's CLIMACOOL® knit baseball pant. Center front functional fly. Elastic waistband with two-button closure at center front with belt loops. Jock tag inside center back waist. Reverse-entry welt pockets at back. Double-layer knee construction with FORMOTION™ element at back knee. 37" unfinished hem. Embroidered adidas brandmark at back left hip. **NCAA/NFHS compliant.**

100% polyester double knit.

Inseam: 34" unfinished hem (size large)

Sizes: 2XS-4XL

Available: November 2010

O25584 Light Onix | White

O25583 White | Light Onix



CLIMACOOL™

Team Baseball Two-Button Jersey

S10TMM572

\$35.00

Expected redesign: Spring 2013

CLIMACOOL® short-sleeve jersey. Two-button center front closure. Mesh inset at back neck for ventilation. Drop-tail construction. Applied 3-Stripes on raglan sleeves. Embroidered adidas brandmark at right chest. **NCAA compliant.**

100% polyester tricot.

Length: 31" (size large)

Sizes: 2XS-4XL

Available: at once

P57820	University Red	P57816	Forest
P57819	Collegiate Navy	P57814	White
P57818	Black	P56915	Light Onix
P57817	Collegiate Royal		



Team Convertible Hot Jacket

\$50.00

S10TMM586

Expected redesign: Fall 2013

Men's woven pullover with quarter-zip placket. Snap sleeves allow for short- or long-sleeve convertibility. Mesh vent at back neck. Dropped hem with bungee with toggle mechanics. Applied 3-Stripes on upper sleeves. Team Performance neck tape inside back neck. Embroidered adidas brandmark at right chest.

NCAA/NFHS compliant.

100% polyester woven plain weave.

Length: 31" (size large)

Sizes: XS-5XL

Available: at once

P57808	Collegiate Navy White	P57805	Forest White
P57809	University Red White	P55922	Cardinal White
P57807	Black White	P55921	Collegiate Purple White
P57806	Collegiate Royal White	P55920	Maroon White



CLIMAWARM™

Big Game Microfleece Crew

M8TMM813

\$55.00

Expected redesign: Spring 2012

CLIMAWARM™ crew neck sweatshirt. Ribbed collar, cuffs and waistband. Embroidered adidas brandmark at back neck. **NCAA compliant.**

100% polyester polarfleece.

Length: 30" (size large)

Sizes: 2XS-4XL

Available: at once

221558	Black Black
221560	University Red Black
221559	Collegiate Navy Black
221557	Collegiate Royal Black



Team GameDay Jacket

\$65.00

M9TMM589

Expected redesign: Fall 2015

Microfiber-filled jacket. Tricot lined. Full-button front with concealed snaps. Inside left chest pocket. Welt pockets. Ribbed cuffs and hem. 3-Stripes detail at back neck. Team Performance equipment room tag inside back neck. Embroidered adidas brandmark at left cuff. **NCAA compliant.**

100% nylon.

Length: 28" (size large)

Sizes: XS-6XL

Available: at once

E73403	University Red White
E73400	Forest White
E73401	Maroon White
E73402	Collegiate Royal White
E76093	Black White
E76094	Collegiate Navy White

The new adidas PROTRAX plate

Light weight • Comfort • Traction • Fit



5 FOREFOOT CLEATS

18% reduction in cleat pressure for more comfort

CORED OUT

8% weight reduction makes you faster

8 SPIKES

22% more traction and superior agility

REENGINEERED CLEAT PLACEMENT

12% faster pivot motion

TOE CLEAT

Off center for toe-off traction for better first metatarsal transition



adiZero™ Diamond King

\$90.00

Be the fastest on the baseline or run down that fly ball; you are the fastest on the field. Sleek two-piece perforated synthetic upper with reinforced collar and heel. Breathable mesh tongue. **Upper:** Synthetic leather upper for lightweight durability. **Lining:** Synthetic leather. **Inlay:** EVA insole for comfort. **Midssole:** Injection-molded EVA midssole for lightweight comfort. **Outsole:** Eight fixed metal cleats to provide maximum traction while fielding and batting. Cored-out TPU plate to reduce weight.

Sizes: 6.5-14 | 15 | 16 | 17

Available: November 2010

606997 University Red | White

624748 Black | White

624749 Collegiate Royal | White



adiPRENE⁺
c4s

Excelsior 6 Low

Expected redesign: Spring 2012

The most durable cleat in the game. An injected TPU toe and a high-abrasion synthetic leather on the upper to protect against all elements. EVA insert under the footbed for comfort. **Upper:** Injected toe clip for toe-abrasion resistance. 10,000-cycle high-abrasion synthetic leather. **Lining:** Non-slip lining for comfort and performance. **Inlay:** Molded EVA sockliner. **Midsole:** Compression-molded EVA for lightweight cushioning. adiPRENE⁺ inserts in the forefoot for pinpoint comfort. **Outsole:** c4s: 4x3 circular cleat configuration.

For other colors, please contact your sales rep.

Sizes: 6.5-14 | 15 | 16 | 17

Available: at once

162589	Black White
162629	White Black



c4s

Diamond King Metal Mid

Expected redesign: Spring 2012

Round the bases with blinding speed thanks to the biting grip of the Diamond King Metal. Featuring the maximum traction that can only come from the c4s cleat configuration. **Upper:** Synthetic leather upper for light weight and durability. Perforated upper materials for superior breathability. **Lining:** Textile. **Inlay:** EVA insole for comfort. **Midsole:** Compression-molded EVA for lightweight cushioning. **Outsole:** c4s: 4x3 circular cleat configuration.

Sizes: 6.5-14 | 15 | 16 | 17

Available: at once

G05176	Black White
G05175	White Black
G05177	Black Royal
G05174	Black University Red



Men's & Youth Triple Star 8 Mid Men's & Youth Triple Star 8 Low

Expected redesign: Spring 2012

Lightweight power perfect for players ready to step it up. With an all-new sockliner that you mold to your foot for incredible comfort and fit. **Upper:** Synthetic leather upper for lightweight durability. **Lining:** Textile. **Inlay:** Heat-molded sockliner for a personalized fit and performance. **Midsole:** Compression-molded EVA. **Outsole:** High-traction rubber. Ultimate in grip.

Sizes: 6-14 | 15 (men's)

10K | 11K | 12K | 13K | 1-6 (youth)

Available: January 2011

men's	youth	
G23271	G21811	Black White (Mid)
G23268	G21810	Black White (Low)



c4s

Diamond King Metal Low

Expected redesign: Spring 2012

Round the bases with blinding speed thanks to the biting grip of the Diamond King Metal. Featuring the maximum traction that can only come from the c4s cleat configuration. **Upper:** Synthetic leather upper for light weight and durability. Perforated upper materials for superior breathability. **Lining:** Textile. **Inlay:** EVA insole for comfort. **Midsole:** Compression-molded EVA for lightweight cushioning. **Outsole:** c4s: 4x3 circular cleat configuration.

Sizes: 6.5-14 | 15 | 16 | 17

Available: at once

G05178	Black University Red
G05179	White Black
G05181	Black Collegiate Royal
G05180	Black White





Removable tongue



adiPRENE®

**Excelsior 6 TR****\$75.00**

The must-have for every coach. Comfortable, high-abrasion synthetic leather on the upper to protect against all elements. Removable-tongue lace cover.

Upper: High-abrasion synthetic upper. **Lining:** Nonslip lining for comfort and performance. **Midsole:** Compression-molded EVA for lightweight cushioning.

Outsole: Full rubber for durability in high-wear areas.

Sizes: 4-13 | 14 | 15

Available: at once

162700 Black | White **061186** University Red | White

G09914 White | Black **162713** Collegiate Navy | White

162699 Collegiate Royal | White

**Turf Hog LE Mid / Low****\$60.00 / \$55.00**

Expected redesign: Spring 2012

Versatile and loaded with value, this cleat comes ready to play. Designed for the everyday athlete, this mid-cut shoe offers extra ankle support and a grippy cleated outsole. **Upper:** Full-grain and synthetic leather for comfort and durability. **Lining:** Nonslip performance lining. **Inlay:** EVA insole for comfort. **Midsole:** Compression-molded EVA. **Outsole:** Multidirectional pattern outsole for maximum traction.

Sizes: 6.5-14 | 15 | 16 | 17

Available: at once

mid	low	
467566	466260	Black White



adiPRENE®
CLIMALITE®
FORMATION™
adiWEAR®
TORSION® SYSTEM

RESPONSE™ Cushion 19**\$85.00**

Expected redesign: Spring 2013

The pressure's off, thanks to a new stretch flex insert on the upper that reduces stress and makes transitions smoother. Functional 3-Stripes improve the fit and add extra support. **Upper:** Flex panels allow the upper to flex naturally with the foot and reduces the risk of irritation. **Lining:** CLIMALITE® lining for moisture management and comfort. **Inlay:** Anatomically molded EVA insole for comfort.

Midsole: adiPRENE® offers full-length forefoot cushioning. FORMOTION™ for motion control and ground adaptability. TORSION® SYSTEM for midfoot integrity.

Outsole: adiWEAR® outsole for best durability in high-wear areas.

Sizes: 6.6-13 | 14 | 15

Available: December 2010

G42479 Black | White | Metallic Silver



adiPRENE®

Fleet TR**\$60.00**

Expected redesign: Fall 2012

The secret to your training is that you mix things up. Perfect for any skill level, this comfortable trainer offers the comfort and support needed for any workout activity. **Upper:** Full-grain leather for comfort and soft feel. **Lining:** Textile.

Inlay: EVA insole for comfort. **Midsole:** Injected EVA for long-term lightweight cushioning. **Outsole:** Blown-rubber outsole for lightweight grip and cushion.

Sizes: 6.5-14 | 15

Available: at once

G07206 Black | White

G07205 White | Black

SOFTBALL



Fastpitch 4 Metal W
p.35



Softball Short-Sleeve Jersey
p.34



Softball Varsity Pant
p.34



WOMEN'S FAST PITCH 2B JERSEY

AD01974W

Standard:

- Embroidered adidas brandmark, pro-length and extended drop tail, coverseamed and double-needle hem.

Body Options: Refer to color chart for available colors.

- Pro Mesh (07)
- adi3MESH (87) – Moisture management
- Pro Mock Mesh (79) – Moisture management
- Heavyweight Poly Warp Knit (15)

Braid Options: No braid options available.

Attribution Options:

- Twill
- Screen Print
- Embroidery

Sizes: XXS-4XL, Youth Sizes YXS-YXL

- 10% upcharge on 3XL
- 20% upcharge on 4XL



WOMEN'S LINE DRIVE JERSEY

AD02376W

Standard:

- Embroidered adidas brandmark, pro-length and extended drop tail, coverseamed and double-needle hem.

Body Options: Refer to color chart for available colors.

- Pro Mesh (07)
- adi3MESH (87) – Moisture management
- Pro Mock Mesh (79) – Moisture management
- Grey Pinstripes (27) – (Panels will be solid-colored material, 15 cloth)
- White Pinstripes (08) – (Panels will be solid-colored material, 15 cloth)
- Heavyweight Poly Warp Knit (15)

Braid Options: Sleeve opening, neck and front, neck only.

- Braid piping (solid color only)
- 3/8" braid (1-color, 2-color, 3-color)

Attribution Options:

- Twill
- Embroidery

Sizes: XXS-4XL, Youth Sizes YXS-YXL

- 10% upcharge on 3XL
- 20% upcharge on 4XL

WOMEN'S SLIDER PANT

AD01972W-EW2BZL (Elastic waist, two-snap closure, zipper fly, belt loops)

AD01972W-RW2BZ (Rib-knit waist, two-snap closure, zipper fly)

AD01972W-RWPU (Rib-knit waist, pull-on) – Pictured

Standard:

- Embroidered adidas brandmark, two set-in back pockets, 2.5" waistband, coverseamed and double-needle hem, elastic leg opening, 24" inseam (size medium).

Body Material Options: Refer to color chart for available colors.

- Grey Pinstripes (27) – (Panels will be solid-colored material, 15 cloth)
- White Pinstripes (08) – (Panels will be solid-colored material, 15 cloth)
- Heavyweight Poly Warp Knit (15)

Braid Options: Braid belt loops, braid legs.

- Braid piping (solid color only)
- 3/8" braid (1-color, 2-color, 3-color)

Attribution Options:

- Embroidery

Inseam Options: 2" increments.

- Available in 24" through 34" inseam lengths

Sizes: XXS-4XL, Youth Sizes YXS-YXL

- 10% upcharge on 3XL
- 20% upcharge on 4XL

WOMEN'S DOUBLE PLAY JERSEY

AD01977W

Standard:

- Embroidered adidas landmark, pro-length and extended drop tail, coverseamed and double-needle hem.

Body Options: Refer to color chart for available colors.

- Pro Mesh (07)
- adi3MESH (87) – Moisture management
- Pro Mock Mesh (79) – Moisture management
- Grey Pinstripes (27) –
(Panels will be solid-colored material, 15 cloth)
- White Pinstripes (08) –
(Panels will be solid-colored material, 15 cloth)
- Heavyweight Poly Warp Knit (15)

Braid Options: No braid options available.**Attribution Options:**

- Twill
- Screen Print
- Embroidery

Sizes: XXS-4XL, Youth Sizes YXS-YXL

- 10% upcharge on 3XL
- 20% upcharge on 4XL

**WOMEN'S BALLPARK SOFTBALL SHORT**

AD01982W

Standard:

- Pull on short with four-needle 1.375" elastic waist with tipped drawstring, one set-in back pocket, 1.5" hemmed leg opening with V-notch, 6" Inseam (size medium), 3" mesh side inserts, self-material liner.

Body Material Options: Refer to color chart for available colors.

- Pro Mesh (07)
- adi3Mesh (87) – Moisture Management
- Pro Mock Mesh (79) – Moisture Management

Braid Options: Braid legs.

- Braid piping (solid color only)
- 3/8" braid (1-color, 2-color, 3-color)

Attribution Options:

- Screen Print
- Embroidery

Inseam Options: 2" Increments.

- Available 6" through 10" Inseam Length

Sizes: XXS-4XL, Youth Sizes YXS-YXL

- 10% upcharge on 3XL
- 20% upcharge on 4XL

**WOMEN'S WALK OFF (WEDGE NECK) JERSEY**

AD01975W

Standard:

- Embroidered adidas landmark, pro-length and extended drop tail, coverseamed and double-needle hem.

Body Options: Refer to color chart for available colors.

- Pro Mesh (07)
- adi3MESH (87) – Moisture management
- Pro Mock Mesh (79) – Moisture management
- Grey Pinstripes (27) –
(Panels will be solid-colored material, 15 cloth)
- White Pinstripes (08) –
(Panels will be solid-colored material, 15 cloth)
- Heavyweight Poly Warp Knit (15)

Braid Options: No braid options available.**Attribution Options:**

- Twill
- Screen Print
- Embroidery

Sizes: XXS-4XL, Youth Sizes YXS-YXL

- 10% upcharge on 3XL
- 20% upcharge on 4XL

**WOMEN'S FANG JERSEY**

AD01986W

Standard:

- Embroidered adidas landmark, pro-length and extended drop tail, coverseamed and double-needle hem.

Body Options: Refer to color chart for available colors.

- Pro Mesh (07)
- adi3MESH (87) – Moisture management
- Pro Mock Mesh (79) – Moisture management
- Grey Pinstripes (27) –
(Panels will be solid-colored material, 15 cloth)
- White Pinstripes (08) –
(Panels will be solid-colored material, 15 cloth)
- Heavyweight Poly Warp Knit (15)

Braid Options: Sleeve opening, neck and front, neck only.

- Braid piping (solid color only)
- 3/8" braid (1-color, 2-color, 3-color)

Attribution Options:

- Twill
- Embroidery

Sizes: XXS-4XL, Youth Sizes YXS-YXL

- 10% upcharge on 3XL
- 20% upcharge on 4XL

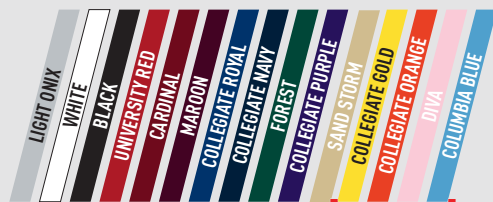
Create Custom Uniforms

Use our miTeam web configurator to outfit your entire team top to bottom. Customize your uniform with your school's colors or start from one of our many inspirations. Go to adidas-team.com or contact your sales representative for ordering details.



1

Customize a miTeam Softball Short-Sleeve Jersey



Available Nov. 2010

1. Select a base color
2. Select an insert color

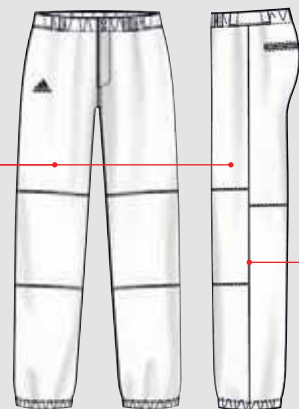


3. Select a sleeve color
4. Select a mesh color

2

Customize matching miTeam Softball Pants

1. Select a base color
2. Select a contrast color



miTeam Softball Short-Sleeve Jersey \$55.00 S10TMW900

Expected redesign: Spring 2013

Stay cool in the game with this short-sleeve CLIMACOOL® softball jersey. Full-button placket spaced for team customization. Mesh insets at underarms, down sides and at back neck for ventilation. Drop-tail construction. You can customize your garment in four zones to fit your team's colors. See more at the miTeam section at www.adidas-team.com. **NCAA/NFHS compliant.**

100% polyester double knit. 100% polyester mesh.

Length: 26" (size medium)

Sizes: 2XS-3XL

Available: at once

P11648 Custom Colors



miTeam Softball Pant \$50.00 S10TMW905

Expected redesign: Spring 2013

CLIMACOOL® knit softball pant. Center front functional fly. Elastic waistband with two-button closure at center front with belt loops. Jock tag inside center back waist. Reverse-entry welt pockets at back. Double-layer knee construction with FORMOTION™ element at back knee. Elastic set in hem. Choose your pant color/braid color online. Embroidered adidas brandmark at right front hip. See more at the miTeam section at www.adidas-team.com. **NCAA/NFHS compliant.**

100% polyester double knit.

Inseam: 24" (size medium)

Sizes: 2XS-3XL

Available: at once

P11647 Custom Colors



Team II Adjustable Visor
Accessories p.83



Softball Short-Sleeve Jersey \$45.00

S10TMW570

Expected redesign: Spring 2013

CLIMACOOOL® short-sleeve softball jersey. Full-button placket spaced for team customization. Mesh insets at underarms, down sides and at back neck for ventilation. Drop-tail construction. Embroidered adidas brandmark at right chest.

NCAA/NFHS compliant.

100% polyester double knit. 100% polyester mesh.

Length: 27" (size medium)

Sizes: 2XS-3XL

Available: at once

P57811 White | Black

P56913 Light Onix | Black



Softball Varsity Pant \$45.00

S10TMW578

Expected redesign: Spring 2013

CLIMACOOOL® knit softball pant. Center front functional fly. Elastic waistband with two-button closure at center front with belt loops. Jock tag inside center back waist. Reverse-entry welt pockets at back. Double-layer knee construction with FORMOTION™ element at back knee. Elastic set in hem. Embroidered adidas brandmark at back left hip. **NCAA/NFHS compliant.**

100% polyester double knit.

Inseam: 24" (size medium)

Sizes: 2XS-3XL

Available: at once

P57802 White | Black

P57801 Black | White

P56901 Light Onix | Black

Team Interval Visor
Accessories p.82



Softball Varsity Short-Sleeve Mesh Jersey \$38.00

S10TMW575

Expected redesign: Spring 2013

Women's mesh jersey built for the softball athlete. Two-button center front closure. Front and back body double-lined for embellishment capabilities. Drop-tail construction. Jock tag at hem. **NCAA/NFHS compliant.**

100% polyester nylon mesh.

Length: 26" (size medium)

Sizes: 2XS-3XL

Available: December 2009

P57799 University Red

P57796 Collegiate Royal

P57798 Collegiate Navy

P57795 Forest

P57797 Black

P57794 White



CLIMALITE®
reversible

Women's Varsity Attack Short \$25.00

S10TMW205

Expected redesign: Spring 2013

Women's reversible mesh short with tricot lining. Available in 6" and 8" inseams. Elastic waistband with internal drawcord. Topstitch detail and applied 3-Stripes at lower legs. adidas brandmark at right hem. **NCAA/NFHS compliant.**

100% polyester mesh.

Inseam: 6" or 8" (size medium)

Sizes: XS-2XL

Available: at once

P58434 Black | White

P55910 Collegiate Navy | White

P55909 Light Onix | White

The new adidas PROTRAX plate

Light weight • Comfort • Traction • Fit



8 SPIKES
22% more traction
and superior agility

5 FOREFOOT CLEATS
18% reduction in cleat
pressure for more comfort

CORED OUT
8% weight reduction
makes you faster

REENGINEERED CLEAT PLACEMENT
12% faster pivot motion

TOE CLEAT
Off center for toe-off
traction for better first
metatarsal transition



Fastpitch 4 Metal W

\$75.00

Expected redesign: Spring 2013

This softball cleat has fast looks backed up by even faster performance. Designed for women, with stellar nine-inning EVA comfort and a durable toe cap that cuts down on drag. **Upper:** Synthetic leather upper for lightweight durability. **Lining:** Textile. **Inlay:** EVA insole for comfort. **Midssole:** Compression-molded EVA. **Outsole:** c4s: 4x3 circular cleat configuration. Injected lightweight TPU outsole with fixed metal cleats.

Sizes: 5-11 | 12

Available: November 2010

G20112 Black | White

G20113 Collegiate Navy | White

G20114 Collegiate Royal | White

G20115 University Red | White

c4s



c4s

Fastpitch 4 TPU W

\$60.00

Expected redesign: Spring 2013

This softball TPU cleat has fast looks backed up by even faster performance. Designed for women, with stellar nine-inning EVA comfort and a durable toe cap that cuts down on drag. **Upper:** Synthetic leather upper for lightweight durability. **Lining:** Textile. **Inlay:** EVA insole for comfort. **Midsole:** Compression-molded EVA. **Outsole:** Lightweight TPU outsole with c4s: 4x3 circular TPU cleat configuration. **Sizes:** 5-11 | 12 **Available:** November 2010

G21421 University Red | White

G23997 Black | White

G23998 Collegiate Navy | White

G21422 Collegiate Royal | White

**Excelsior 6 Low W**

\$90.00

Expected redesign: Spring 2012

The most durable cleat in the game. An injected TPU toe and high-abrasion synthetic leather on the upper to protect against all elements. EVA insert under the footbed for comfort. **NCAA/NFHS compliant.** **Upper:** 10,000-cycle high-abrasion synthetic leather. Injected toe clip for toe-abrasion resistance.

Lining: Nonslip lining for comfort and performance. **Inlay:** Molded EVA sockliner. **Midsole:** adiPRENE[®] inserts in the forefoot for pinpoint comfort. Compression-molded EVA for lightweight cushioning. **Outsole:** c4s: 4x3 circular cleat configuration.

For other colors, please contact your sales rep.

Sizes: 5-15**Available:** at onceadiPRENE[®]

c4s

173395 Black | White

173404 White | Black



adiTUFF™

Triple Star 8 Low W

\$45.00

Expected redesign: Spring 2013

You got the green light, now go yard in this feature-rich traditional cleat with fold-over tongue, adiTUFF™ toe and perforated forefoot. Built for performance and lasting comfort. **Upper:** Synthetic leather upper for lightweight durability. **Lining:** Textile. **Inlay:** Heat-molded sockliner for a personalized fit and performance. **Midsole:** Compression-molded EVA. **Outsole:** High-traction rubber. Ultimate in grip.

Sizes: 5-11 | 12**Available:** at once

G23277 Black | White



Excelsior

\$35.00

Expected redesign: Spring 2013

Pittard's high-quality leather palm for the most comfortable fit in the game. Preferred glove of adidas MLB athletes. Ergonomic cut to ensure maximum natural range of motion. Nylon mesh on back of hand for snug fit. Leather / nylon back.

Sizes: XS-2XL

Available: at once

200027 Black | White

200031 University Red | White

200202 Collegiate Navy | White

200226 Collegiate Royal | White

200227 White | Black



Diamond King Lightning

\$20.00

Genuine leather palm provides premium, long-lasting grip. Lightweight, breathable back-of-hand material combined with neoprene wristband creates an incredibly comfortable fit and feel. Ergonomic cut for maximum range of motion. Ryan Howard's glove in 2011 MLB season.

Leather / mesh back.

Sizes: XS-2XL

Available: November 2010

252434 White | Black

252435 White | University Red

252436 White | Collegiate Navy

252437 White | Forest

252497 White | Collegiate Royal



Slugger (Youth)

\$20.00

Expected redesign: Spring 2012

WebTek synthetic palm provides exceptional grip and dexterity. Soft nanomesh back of hand creates a comfortable, form-fitting glove. Kids'-specific sizing and cut.

Leather palm / synthetic backing.

Sizes: YS-YXL

Available: November 2011

L23305 Black | White