



### Peace of Mind.

*VueZone is a lifestyle product whose application extends far beyond security. True, VueZone can be used to monitor your property, but peace of mind can also come from knowing your kids got home from school safely, your new puppy is still in the back yard, or you did, in fact, close the garage door this morning. VueZone allows you to monitor those you care about most—and seeing is believing.*

### Wire-free. Hassle free.

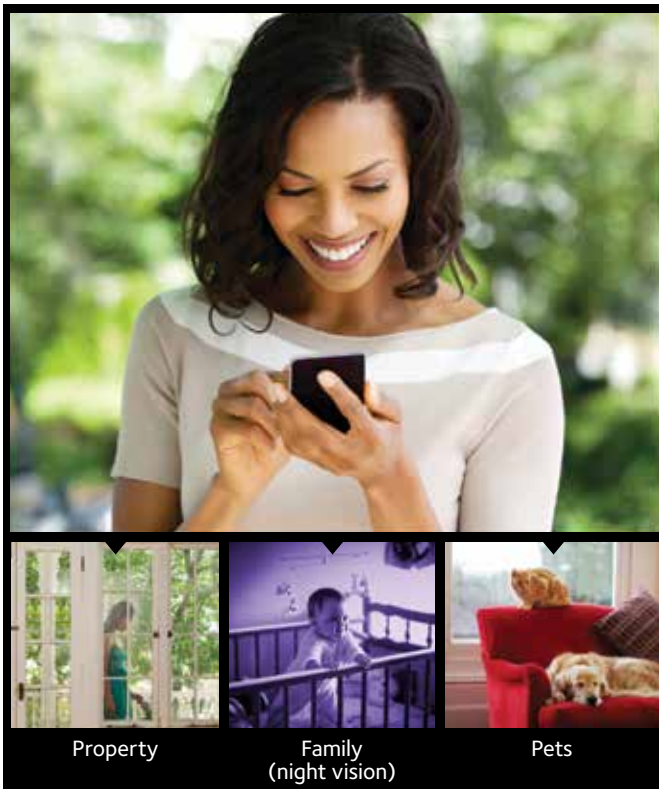
*VueZone is the only video monitoring system to feature completely wire-free cameras. The patented, battery-operated VueZone cameras run on ultra-low power, so you avoid the hassle of running ugly power cords. The technology allows for high image data throughput with very low network overhead. The result is you can place VueZone cameras exactly where you need them, without the expense or mess of other cameras—and even move them as needed. You'll spend more time deciding where to put them than you will setting them up.*

### Place anywhere. View anytime.

*VueZone completely wire-free cameras can be set up in 10 minutes, can be placed absolutely anywhere, and can be viewed from your smartphone, PC, or Mac. You simply place the unobtrusive cameras wherever you'd like, sync your cameras with one click, and you're ready to start viewing live video through your own secure my.VueZone.com online account.*

### Smart. Simple.

*VueZone handles the complex technology so you don't have to. Activating your system is done online in just minutes; there's no software to install or manage—and you don't have to reconfigure your home network. With the press of one button all your VueZone cameras are securely paired with your account. And since your account is web-based, you're free to access your live video from any browser or smartphone. And of course, with motion detection VueZone automatically captures unexpected events and sends you email alerts.*



### Installs in Under 10 Minutes





VZSM2720 system shown.  
See chart below for specific system configurations.




### Start Small and Expand as You Go

*VueZone is a system of tiny cameras that are paired securely with your own Base Station. And VueZone cameras can be added to your existing VueZone system at any time, so you can tailor your system to your particular needs. The same one-touch sync process applies to securely pair all cameras. If you can lift just one finger, you can add a VueZone camera.*

### Systems

	INCLUDED		
	Base Station Station	Motion Detection Camera	Outdoor Shell
		VZCM2050	VZMS2050
VZSM220x	1	1	0
VZSM270x	1	2	0
VZSM272x	1	2	1

### Cameras

	FEATURES				
	Wire-free	Motion Detection	Works with Outdoor Shell	Night Vision	Viewing Angle
VZCB2010 	●				normal (60°)
VZCM2050 	●	●	●		wide (110°)
VZCN2060 	●	●	●	●	wide (110°)

### Watch Your World

From just needing the peace of mind that comes from a quick check-in to monitoring several different locations, VueZone has a service plan that suits you. The FREE service allows you to check-in live from your browser. Or, for just a few dollars a month, you get all the VueZone features—from video alerts to digital pan and zoom, to storing motion detection video in the cloud—and much more.

### Service Plan

Features	FREE	Upgrade Options	
		Premier	Elite*
		\$4.99 per month	\$9.99 per month
• Wire free cameras – place anywhere/view anytime	●	●	●
• Motion detection with email alerts	snapshot	snapshot/video	snapshot/video
• Live video on your computer	●	●	●
• Cameras supported	2	5	15
• Locations supported	1	1	3
• Invite friends to view live video	1	10	15
• Live video on your iPad, iPhone, Android	●	●	●
• Arm/disarm motion detection via smartphone		●	●
• Digital pan and zoom		●	●
• Securely record video to the cloud		up to 250 MB	up to 500 MB
• Supports HD snapshot mode		●	●
• Publish videos to YouTube and snapshots to Flick		●	●

\*Elite Service Plan available February 2013



Scan to learn more about upgrade options  
[www.vuezone.com/serviceplans](http://www.vuezone.com/serviceplans)



### ACCESSORIES

VueZone accessories allow you to place your cameras in locations throughout your home or business. Mount cameras in a window or hang one upside down from a ceiling. Even put a camera outdoors with the Outdoor Shell.



#### Outdoor Shell (VZMS2050)

Rainy outside? It won't matter with your VueZone camera mounted protected inside this water resistant shell. The two-piece shell protects your camera from moisture, while allowing the motion sensor to perform normally.

- Designed to fit motion detection cameras (VZCM2050 and VZCN2060)
- Resists water—sprinkle, spray, and splash (IPX4)
- Motion sensor works normally in shell
- Includes articulated mounting arm or can be attached to standard tripod screw



#### Table/Ceiling Mount (VZMB2010)

Get 360° positioning power for your VueZone cameras. Use this mount freestanding on a table or shelf, or hang upside down from ceiling with included adhesive or screws.

- Simply click camera to magnetic ball and aim
- Includes stainless steel tether that can be installed optionally to deter tampering
- Mount also screws onto any standard camera tripod (1/4-20)



### Window Mount (VZMW2010)

*It's easy to point your VueZone camera out the middle of a large window. Simply stick the suction cup to clean glass then click your camera onto the magnetic mounting ball.*

- Motion detection does NOT work through glass
- Camera lens touches glass to minimize unwanted reflections
- Mounting ball should hang below suction cup
- Pull tab to remove suction cup from glass



### Classic Wall Mount | 4-Pack (VZMT1000)

*Place mounts anywhere you want to view, and simply move your cameras from one location to the next in seconds. Each mount includes a peel-and-stick backing for quick mounting on virtually any flat surface. Or, you can attach the mount with the included screw.*

### Camera-Accessory Compatibility

	VZCB2010	VZCM2050	VZCN2060
Outdoor Shell (VZMS2050)		●	●
Table & Ceiling Mount (VZMB2010)	●	●	●
Window Mount (VZMW2010)	●		
Classic Wall Mount (VZMT1000)	●	●	●

### Camera

Video resolution and frame rate	VGA (640 x 480 pixels) at 3 fps QVGA (320 x 240 pixels) at 6 fps
Video format	FLV (Flash Live Video)
Snapshot mode	UXGA (1600 x 1200 pixels at 1 fps)
Snapshot quality	UXGA (1600 x 1200 pixels) VGA (640 x 480 pixels) QVGA (320 x 240 pixels)
Snapshot format	JPEG
Image sensor	CMOS full color
Motion sensor† (VZCM2050, VZCN2060)	Automatically triggers recording Sensitivity: 130lbs @ 15ft
Digital pan and zoom	2x, 4x
Light sensitivity	1v/lux-sec
IR Filter	VZCB2010: 650 nm (day) VZCM2050: 650 nm (day) VZCN2060: 850 nm (night)
White balance & exposure	Auto-adaptive white/black balance and exposure
Security features	FrameMesh™ wireless video encryption
Battery	Lithium CR123 Photo
Battery charge level indication	Yes—on my.VueZone.com and VueZone Mobile
Battery life	6 months under normal use <sup>1</sup>
Field of view	VZCB2010: Up to 600 diagonal VZCM2050: Up to 1100 diagonal VZCN2060: Up to 1100 diagonal
Focus range (ST)	Fixed focus (60cm to infinity)
Operating temperature	140 - 1220 F (-100 C to 500 C)
Dimensions/Weight <sup>††</sup>	<b>VZCB2010</b> 2.38 x 1.32 x 2.77 in (60.45 x 33.52 x 70.35 mm) 1.2 oz (34 g) <b>VZCM2050</b> 2.39 x 1.99 x 2.77 in (60.70 x 50.54 x 70.35 mm) 1.62 oz (46 g) <b>VZCN2060</b> 2.39 x 1.99 x 2.77 in (60.70 x 50.54 x 70.35 mm) 1.62 oz (46 g)

### Infrared Lamp

Power adapter	110V-240V, 50/60 Hz, input
Operating temperature	14° to 122° F (-10° to 50° C)
Dimensions (H x W x D)	5.16 x 4.15 x 4.15 in (131.06 x 105.41 x 105.41 mm)
Weight	11.9 oz (337.36g)

† Certain camera models only.

†† Weight does not include batteries of 17g (0.6 oz) each.

<sup>1</sup> Batteries last 6 months under normal usage. VueZone is an on-demand system. Normal usage is five minutes of streaming or recording time per day.

<sup>2</sup> Camera range is up to 300 ft (line of sight). For indoor installations, range will decrease depending on environmental factors, including construction materials and methods, and wireless interference. Wireless coverage is suitable for a typical 2,500 square foot residence.

© 2013 NETGEAR, Inc. NETGEAR, the NETGEAR Logo, VueZone, and the VueZone logo are trademarks and/or registered trademarks of NETGEAR, Inc. and/or subsidiaries in the United States and/or other countries. Other brand names mentioned herein are for identification purposes only and may be trademarks of their respective holder(s). Patents and patents pending. Simulated online photos are used on this package. Information is subject to change without notice. All rights reserved.

Camera range is up to 300 ft (line of sight). For indoor installations, range will decrease depending on environmental factors, including construction materials and methods, and wireless interference. Wireless coverage is suitable for a typical 2,500 square foot residence.

### Base Station

Power adapter	110V-240V, 50/60 Hz, input
Interface port	Fast Ethernet
Indicator LEDs	Power, VueZone Activity, Internet Activity Sync
IP Configuration	DHCP (default) or Static
Antenna	Internal
Wireless range	300+ feet LOS <sup>2</sup>
Wireless data rate	Up to 2 Mbps
Wireless frequency	2.4GHz
Gateway processor and memory	Freescall i.MX25, 16MB Flash, 64MB RAM
Certifications	FCC, IC
Operating temperature	32° to 122° F (0° to 50° C)
Dimensions (H x W x D)	5.0 x 2.9 x 4.4 in (127 x 73.66 x 10.16 mm)
Weight	7.3 oz (206 g)

### my.VueZone.com

Browsers supported	Internet Explorer 8 or above, Firefox 3.5 or above, Safari 3 or above, Chrome 10 or above
Smartphones supported	Yes
Automatically recognize additional VueZone cameras entering network	Yes, using VueZone gateway Sync button
View live video from one or more cameras	Yes
Download saved content to your computer	Yes, with service plan
Email a video clip or snapshot	Yes, with service plan

### System Requirements

High-speed Internet connection and an available port on your router
Flash-enabled browser for viewing

### Warranty and Support

One-year, parts and labor limited warranty
--