

IMPORTANT SAFEGUARDS

When using an electrical appliance, basic precautions should always be followed, including the following:

Read all instructions before using this Andis Trimmer.

DANGER: To reduce the risk of electric shock:

1. Do not reach for an appliance that has fallen into water. Unplug immediately.
2. Do not use while bathing or in a shower.
3. Do not place or store appliance where it can fall or be pulled into a tub or sink. Do not place in or drop into water or other liquid.
4. Except when charging, always unplug this appliance from the electric outlet immediately after using.
5. Unplug this appliance before cleaning.

WARNING: To reduce the risk of burns, fire, electric shock, or injury to persons:

1. Close supervision is necessary when this appliance is used by, on, or near children or invalids.
2. Use this appliance only for its intended use as described in this manual. Do not use attachments not recommended by manufacturer.
3. Never operate this appliance if it has a damaged cord or plug, if it is not working properly, if it has been dropped or damaged, or dropped into water. Return the appliance to a service center for examination and repair.
4. Keep the cord away from heated surfaces.
5. Never drop or insert any object into any opening. Insert only recharging transformer plug into trimmer receptacle.
6. Do not use outdoors or operate when aerosol (spray) products are being used or where oxygen is being administered.
7. Do not use this appliance with a damaged or broken blade or comb as injury to the skin may occur.
8. Always attach plug to appliance first, then to outlet. To disconnect, turn all controls to "off" then remove plug from outlet.
9. Adjust voltage setting before connecting appliance to outlet.

SAVE THESE INSTRUCTIONS

This product is intended for Professional use.

OPERATING INSTRUCTIONS

CHARGING UNIT

READ THE FOLLOWING BEFORE CHARGING THIS CLIPPER/TRIMMER

Remove Andis cordless clipper/trimmer and AC adapter from carton. The dual voltage adapter will have to be set manually to the correct voltage before plugging into an electrical outlet. In the U.S.A., adapter must be at 120V setting (as shown in

Fig. 1). Plug adapter into a 120V (or 240V AC outlet, as according to your local power standards). Note that the clipper/trimmer ON/OFF switch must be in the OFF position for the battery to charge. Plug adapter cord directly into the clipper/trimmer (see Fig. 2). The green light on the clipper/trimmer will turn on. The clipper/trimmer is not charged at the factory. **Please recharge clipper /trimmer for 12 hours (overnight) before first use for maximum performance.**



Figure 1



Figure 2

You can keep the clipper/trimmer plugged into the adapter when not in use. The adapter will maintain the battery at full charge and the green light will stay on. The unit has a Nickel Metal Hydride battery that cannot be damaged by overcharging. However, we recommend that the adapter be unplugged if the clipper/trimmer won't be used for seven or more days.

PLEASE NOTE: Nickel Metal Hydride batteries have less "Memory Effect" than Nickel Cadmium batteries. Memory Effect is caused by repeated short uses of the clipper/trimmer, followed by charging. The battery never fully discharges and, therefore, "forgets" how much energy it can store. In order to maximize the performance of your Nickel Metal Hydride battery, please follow these steps:

- 1) Oil blade. Turn clipper/trimmer on and allow it run until the blade slows significantly. It is not necessary to let the blade stop completely.
- 2) Turn clipper/trimmer off. Charge overnight.
- 3) Conduct the above exercise every sixty days.

FAILURE TO CHARGE:

- 1) Make sure voltage is present at the wall outlet (confirm with an appliance you know is working).
- 2) Check to make sure adapter cord is plugged firmly into trimmer. Twist the adapter connector slightly to insure good electrical connection. If failure to charge still exists, return trimmer to Andis or an Andis Authorized Service Station listed in this manual for examination and repair or replacement.

ATTENTION: The product you have purchased contains a rechargeable battery. The battery is recyclable. At the end of its useful life, under various state and local laws, it may be illegal to dispose of this battery into the municipal waste stream. Check with your local solid waste officials (or call 1-800-822-8837) for details in your area for recycling options or proper disposal.



USING TRIMMING COMBS

Your cord/cordless rechargeable trimmer comes complete with six trimming guides. They are 1/2", 3/8", 1/4", 7 day, 5 day and a 3 day for even closer trimming. (See figure 3)

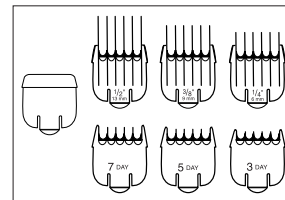


Figure 3

ATTACHING THE TRIMMING COMBS

Slide front of comb over the teeth of the blade. Snap comb down over back of blade. (See figure 4)

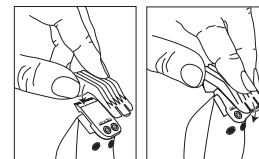


Figure 4

BLADES: When trimming is complete, slide on/off switch to off position and remove the trimming comb (if being used). Lightly brush out blades with the blade cleaning brush provided. For best results put a drop of Andis clipper oil on the blade when necessary. Motor bearings are permanently lubricated—do not attempt to oil. Blades should be handled carefully and never bumped or used to cut dirty or abrasive material. Do not use while bathing or in the shower, as damage to batteries and product may occur.

TRIMMING NECKLINE

Your cord/cordless rechargeable trimmer makes trimming the neckline easier. The results are professional, too. Simply comb hair into natural position and choose an attachment comb for the length of cut desired. Trim with the natural grain of the hair. You may wish to use a comb to hold the hair in position until you feel comfortable using your trimmer. For a closer trim, you may wish to select one of the closer cutting comb attachments (Fig. 3).



Fig. 5



Fig. 6



Fig. 7



Fig. 8

TRIMMING BEARD

Always begin with a slightly damp beard for more control when shaping. Comb your beard in the direction the hair grows, to give you an indication of what areas you need to trim. To trim the outer edge of your beard and add definition, hold the trimmer horizontally with on/off switch facing out. Following the line of your jawbone, cut away longer hairs along the outer edge of your beard (Figs. 6 & 7). To trim your beard line, hold the trimmer vertically (on/off switch facing you). Start at the trimmed edge of your beard and, with a downward motion, trim the area right under your beard line. For added definition of your beard line, use the horizontal position to trim any stray hair (Fig. 8).

TRIMMING MUSTACHE

Always begin with a slightly damp mustache. When trimming your mustache the first few times you may wish to use a comb to hold in place while you trim. As the hair is held in place, trim the hair ends (on/off switch facing out using an upward motion). Once you feel comfortable using your cordless rechargeable trimmer, you may wish to use it without the comb. Simply place a finger on upper lip to lift hair away from skin and trim mustache using an upward motion. When you've achieved the desired length, use a downward motion to blend the hairs of your mustache. Be sure to trim slowly and gently. Too much pressure too quickly may trim off too much (Fig. 9).



Fig. 9

ANDIS AUTHORIZED REPAIR STATIONS

RYAN'S SHARPENING 1805 E. McDowell Rd., Phoenix, AZ 85006-0352
GROOM-IT INDUSTRIES 3305 Glendale Blvd., Los Angeles, CA 90039
GROOMTECH/LPS 555 Saturn Blvd, #436, San Diego, CA 92154
APPLIANCE SALES & SERV. 840 Folsom St., San Francisco, CA 94105
THE SHAVER SHOP 17516 Hawthorne Blvd., Torrance, CA 90504
MILBERN'S 2434 N. Federal Hwy., Lighthouse Point, FL 33064 954-941-3213
C.J.'S GROOMING TOOLS 3241 Shallowford Rd., Atlanta, GA 30341
K.A. VOGEL & SONS, INC. 2215 N. Milwaukee Ave., Chicago, IL 60647
AUTHORIZED SERVICE CO. 1644 W. Ogden Ave., Downers Grove, IL 60515
STEPHENSON'S SALES & SERVICE 156 E. Main St., Lake Zurich, IL 60047
LAVILLE SERVICE & SUPPLY 419 West Ewing Ave., South Bend, IN 46613
SCOTLAND YARD 8432 Quail, Florence, KY 41042
SMALL APPLIANCE REPAIR 2636 Jefferson Highway, Jefferson, LA 70121
WATERS APPLIANCE SERVICE 216 E. Diamond Ave., Gaithersburg, MD 20877
BO-JO CLIPPER SERVICE 615 Summer St., Lynn, MA 01905
SHAVER & TIME WORLD 27326 Grand River Rd., Redford, MI 48240
SUPERIOR APPLIANCE SERV. 1050 Scribner N.W., Grand Rapids, MI 49504
MISSISSIPPI GRINDING WORKS, 336 Meadowbrook Road, Jackson MS 39206
HUFF'S WHOLESALE DISTRIBUTOR Hwy. 6, POB 139, Knox City, MO 63446
PURTLE BARBER SUPPLY CO., 5628 Gravois Ave., St. Louis, MO 63116
MYER'S ELECTRIC 7342 Farnam, Omaha, NE 68114
THE SHARP SHOP 5712 W. Charleston Blvd., Las Vegas, NV 89146
SUN APPLIANCE SERVICE 1687 Central Ave., Albany, NY 12205
LONG ISLAND CUTLERY 170-10 Jamaica Ave., Jamaica, NY 11432
NORWOOD BARBER SUPPLY 16249 Eury Rd., Norwood, NC 28128
HEROLD BROS., INC. 1418 Euclid Ave., Cleveland, OH 44115
DIX BARBER SUPPLY CO. 3960 E. Main St., Columbus, OH 43213
APPLIANCE & SHAVER SERVICE 3142 Markway Rd., Toledo, OH 43606
H.L. MOSS, INC. 1714 E. 15th St., Tulsa, OK 74104
APPLIANCE REPAIR CENTRAL 2033 N.E. Columbia Blvd., Portland, OR 97211
BURROUGH'S ELEC. CLIPPER CTR. 320 Court St. N.E., Salem, OR 97301
M. SCHNEIDER & SONS 5046 N. 5th St., Philadelphia, PA 19120
MYERS MANSFIELD RD #3 Box 316, Ford City, PA 16226
APPLIANCE SALES & SERVICE 2608 Main St., Columbia, SC 29201
SHARP'N BY DON 5373 Blackman Rd., Murfreesboro, TN 37129
REID'S APPLIANCE SERVICE 906 Georgia, Amarillo, TX 79102
ALL TYPE SALES & SERVICE 2835 Irving Blvd, Dallas, TX 75207
FORT WORTH SHAVER & APPLIANCE 1900 Montgomery St., Fort Worth, TX 76107
WATER'S APPLIANCE SERVICE 8371 W. Main St., Marshall, VA 20116
SUN ELECTRIC APPLIANCE 4554 E. Princess Anne Rd., Norfolk, VA 23502
THE SHAVER CLINIC 5108 Evergreen Way, Suite #2, Everett, WA 98203
ANDIS COMPANY 1800 Renaissance Blvd., Sturtevant, WI 53177

andis®



Model
BTF

LIMITED WARRANTY

This Andis product is warranted against defective material or workmanship for one year from the date of purchase. All implied warranties arising and by virtue of State law shall also be limited to one year. Any Andis product determined to be defective in material or workmanship during the warranty period will be repaired or replaced without cost to the consumer for parts and labor. The defective product must be returned with proof of purchase and \$6.50 to cover cost of handling, to any Authorized Andis Repair Station or to: Andis, 1800 Renaissance Blvd., Sturtevant, WI 53177 USA or IN CANADA to: A & AG AGENCIES (CANADA), INC. 10050 Côte de Liesse, Lachine, Québec, H8T 1A3 CANADA. Enclose or attach a letter describing the nature of the problem. Due to foreign matter sometimes found in hair, clipper blades, or resharpening of blades, are not subject to the one year warranty. Andis will not be liable under this warranty for any defect, failure or malfunction of any of its products caused by normal wear, abuse, misuse, unauthorized adjustments or disassembling. Andis will not be liable for any consequential damages resulting from any defect in material or workmanship of any of its products. Some States do not allow limitations on how long an implied warranty lasts or exclusion or limitation of incidental or consequential damages, so the above limitations or exclusions may not apply to you. The Warranty gives you specific legal rights, and you may also have other rights which may vary from State to State.

Date Purchased _____ Model _____

Congratulations – you just went First Class when you bought this Andis product. Careful workmanship and quality design have been the hallmarks of Andis products since 1922.

KEEP THIS FOR YOUR RECORDS

Form # 22781 © 2002 Andis Company, USA Printed in China