

Setting up a Logic Controls CR3003 USB Cash Drawer

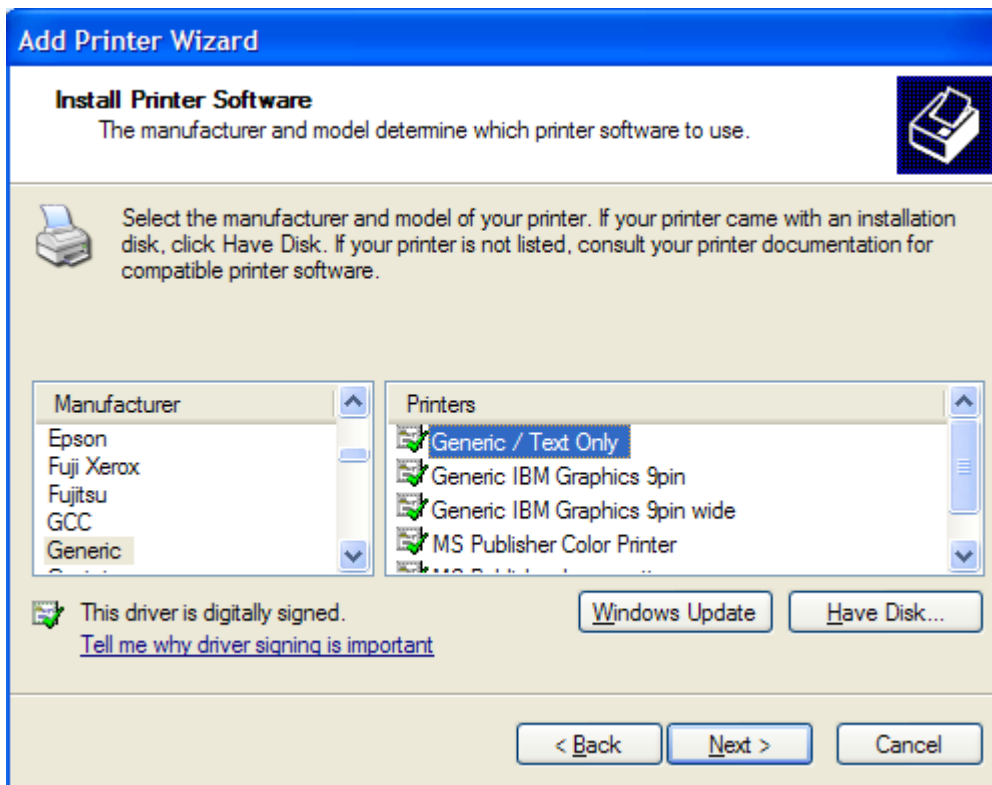
Go to Logic Controls website at www.logiccontrols.com and download the USB Driver and Programming Utility from the Cash Drawer Section of the Downloads page of the site. Unzip the files to a folder noting where you put them.

Connect the cash drawer to the computer before you install the Logic Controls driver. This will install a HID device in the computer's Device Manager

Next, Install the USB driver (HIDCOMINST.EXE) from the USB driver folder. This will install a virtual COM port, which you can see in the Windows Device Manager under Ports (COM and LPT). The port installed is usually the next available number after the last physical COM port. For example, If the computer has a physical COM 1, the virtual COM port will install as COM 2.

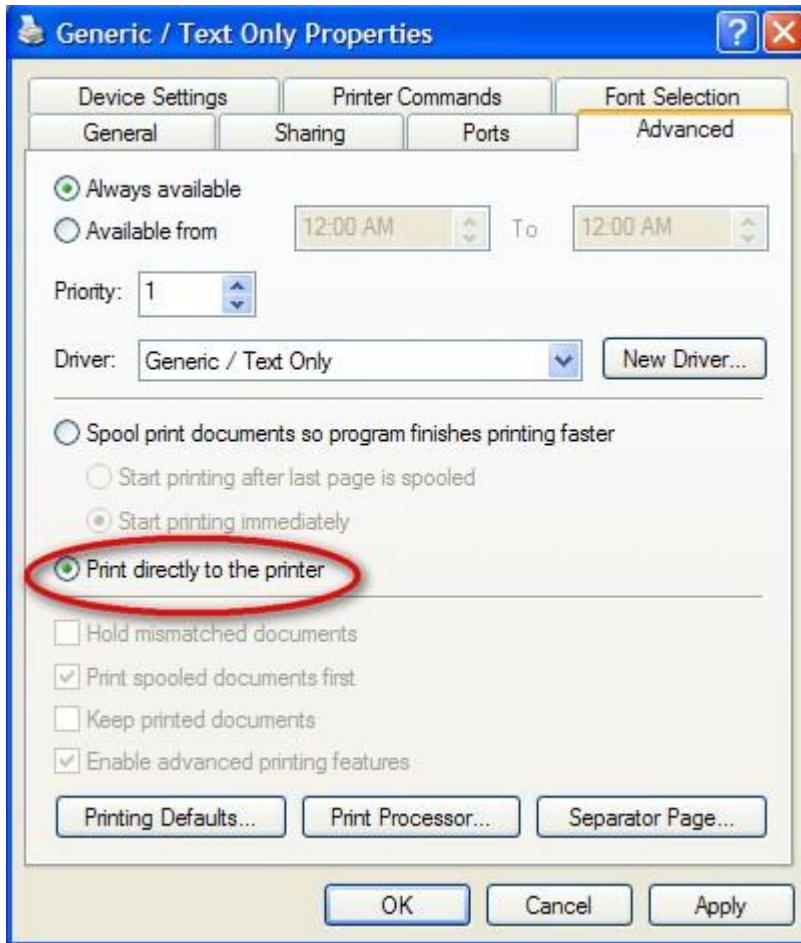
REBOOT the PC. This is important to make sure the new COM port will be available for the next step.

In the Printers and Faxes window of the PC add a Generic Text Only Printer. **When you select a port, make sure you use the COM port installed by the USB driver.**



Don't set it to the default printer, don't share it and don't print a test page. POSitive addresses the cash drawer through this printer port and driver.

After the Generic printer is installed, edit the printer properties and click the “Advanced” tab.



Select “**Print directly to the printer**”. If you don’t do this the drawer won’t open.

Next, in POSitive Station settings, Choose Cash Drawer (see next screen shot.). Be sure to put a check next to Use Cash Drawer. Enter 7 for the Cash Drawer Code. The Cash Drawer Port, Pulse and Bypass Direct To Port settings are not used and are overridden by the next step. Finally, select the Generic Text Only printer driver we set up earlier for the Cash Drawer Printer.

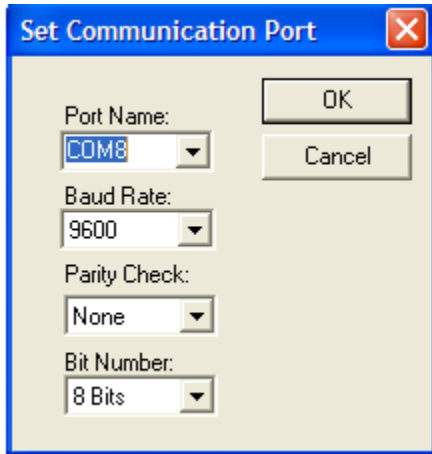
Click the test button – if it was set up correctly the drawer will open. If it doesn't, check that the driver is set to print directly to the printer (see previous step). This is the most likely cause for failure of this set-up.

The screenshot shows a software window titled "Station Detail" with a blue header bar. On the left is a vertical navigation menu with the following items: General, Program Start, Screen Settings, Invoice/Misc, Printing Options, Register Balance, **Cash Drawer** (highlighted in blue), Pole Display, Credit Card Processing, Portable Scanner, Multi-Monitor Support, RMS Pump Interface, Printers/E-Mail, Invoice, Alternate Invoice, Layaway, Orders, Internet Orders, Service, Quotes, Quotes w/Costs, Contract Pricing, Deposit Receipt, AR Receipt, Consignment Agrmnt, Recurring Invoices, and Packing Slips. The main area of the window is titled "Cash Drawer" and contains the following settings:

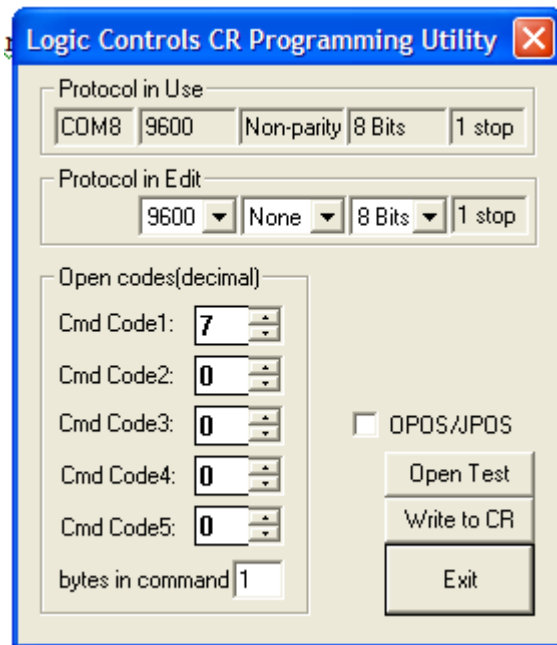
- ☒ Use Cash Drawer
- Cash Drawer Settings**
 - Cash Drawer Code:
Enter the decimal number(s) (separated by commas) needed to open your cash drawer. For example, many cash drawers use the decimal number 7.
- Cash Drawer Port**
 - COM1, COM2, COM3, COM4, COM5, COM6, COM7, COM8, LPT1, LPT2, LPT3 (radio buttons; COM8 is selected)
- Pulse: (with up/down arrows)
- ☐ Bypass Direct To Port
- Test button (with a printer icon)
- Cash Drawer Printer: (with a dropdown arrow)

At the bottom left of the window is a button labeled "COM Ports Setup" with a printer icon. At the bottom right are two buttons: "OK [F10]" with a green checkmark icon and "Cancel" with a red X icon.

FOR REFERENCE. USE ONLY IF NECESSARY.
Setting up the Cash Drawer using the programming utility



CREDIT.exe is the programming utility. This is pretty simple – choose the port name as appropriate and click OK.



You can use this utility to test the drawer and to change the communication protocol or the open code. The default open code for Logic Controls serial and USB drawers is 7. If you change the open code, make sure the “bytes in command” number matches the number of Cmd Codes used. Click Write to CR to update the drawer.