

A polished silver thermal carafe is the central focus, standing on a dark surface. In the background, two white coffee cups are visible on a tray, and the blurred outlines of wooden chairs suggest a cafe or restaurant setting. The lighting is warm and focused on the carafe.

# Innovation

2009

SERVICE IDEAS CATALOG

EFFECTIVE FEBRUARY 1, 2009

A LEGACY OF

# INNOVATION

---



1946



1948



1956



1982/2003



1987



1998



1999



2005



2006



2007



2007



2008

In 1946, Art Murray had a vision to improve the service in his own Murray's Restaurant of Minneapolis, and to share those ideas with fellow operators. His ideas, innovation and successes are the foundation of Service Ideas. Over 60 years later we remain passionate about providing solutions to improve foodservice presentation and remain committed to bringing innovative products and partnerships that work together in our industry. From our family and team, "It is our privilege to work together with you this year and we thank you for the opportunity to present our 2009 catalog filled with our legacy of innovation".

YOUR PARTNERS,  
THE MURRAY FAMILY  
& TEAM SERVICE IDEAS

# Service Ideas 2009

<b>Table</b>		Alfi® Hotello Top Therm Servers	29	Custom Cresting	43
Hot Solutions - <b>New!</b>	5	982 Series Servers - <b>New!</b>	29	Frothing Pitchers	44
Wood Platter	5	Stainless Pitchers	29	Water Pitcher	44
Thermo-Plate™ Platters	6	Steelvac™ PVL Servers	30	Stainless Pitcher	44
Bread Baskets	7	Steelvac™ FVP Servers	30	Decanter	44
Wine Chillers	7	Steelvac™ SJ Servers	31	Ice Buckets	45
Tuscany Glass™ Collection	8-15	Brew N' Pour™ Steelvac™ Server	31	Non-Slip Trays	45
Syrup Saver Dispenser	16	Steelvac™ S/S2 Carafes	32		
Syrup Dispensers	16	Classic Stainless Carafes	32	<b>Airpots</b>	
Table Caddy	16	Flavorbands	32	Eco-Air® with Sight Glass - <b>New!</b>	47
Table Organizers	17			Roto Rack	47
Sugar/Creamer Set	17	<b>Glass Lined Servers</b>		Drip Trays	47
Sugar Packet Holder - <b>New!</b>	17	Alfi® Kugel Ball Servers	33	Eco-Air® Glass Lined	49
		Alfi® Toscana	34	Eco-Air® Stainless Lined	49
<b>Tea Servers</b>		Alfi® Basic Modern Servers	34	Eco-Air® Colors	49
Tea Chest	19	Alfi® Nomos Servers	34	Eco-Air® Parts	49
Ceramic 'Cast Iron Look' Tea Pot	19	Alfi® Handy Servers	35	Economy Stainless	50
Finum Tea Products - <b>New!</b>	20	Alfi® Neat Servers	35	NSF Stainless Airpot - <b>New!</b>	50
Tea Ball	21	Alfi® Diana Servers	35	Premium Glass Lined	51
Ceramic Tea Pot	21	Alfi® Saphir Server	36	Steelvac™ Stainless Lined	51
Plastic Teapot	21	Alfi® Juwel Server	36	Blacktie™ Sight Glass	51
		Alfi® Opal Server	36	Steelvac™ Sightglass	51
<b>Plastic Lined Servers</b>		Alfi® Albergo	38	Airpot Cover-Ups	52
Aero Serv Servers - <b>New!</b>	22	Classy™ Vacuum Servers	38	Gravity-Serv™	53
New Generation® Servers	23	Push N' Serv™ Servers	39	Wire Racks	54
Metallic Luster™ Servers	24	Ultra Carafe	39	Airpot Stands	54
Push Button Metallic Servers	24	Classic Glass Carafe™	39	Condiment Organizers	55
Thermo-Serv® Push Button Servers	25			Compartment Condiment Organizer	55
Thermo-Serv® Flip Top Servers	25	<b>Specialty Servers &amp; Accessories</b>		Coffee And Tea Dispenser Cleaners	55
Twist N' Serv™ Servers	26	Service Idea Brick Presses	40	First Aid Kit	55
Eco-Serv™ Servers	26	Alfi® Coffee Maker	41	Brewer Packages - <b>New!</b>	56-57
Swirl Servers	26	Alfi® Teekanne	41		
		Stainless Press - <b>New!</b>	41	<b>Buffet</b>	
<b>Stainless Lined Servers</b>		Service Ideas Tea Pot	41	Insulated Urns	59
Alfi® Juwel Top Therm Server	27	Alfi® Cool Bottle	42	Tea Urns	59
Alfi® Opal Top Therm Server	27	Ice Tube Pitchers	42	Ze Pé Beverage Dispensers - <b>New!</b>	60
Alfi® Hotel Design - <b>New!</b>	27	Sculptured Ice™ Pitcher	42	Ze Pé Cereal Dispensers	61
Alfi® Noble Server - <b>New!</b>	28	Identification Magnets	43	Ze Pé Buffetware	61
Alfi® Albergo Top Therm Server	28	Identification Labels Static Cling	43	Ze Pé Serving Carts	62
WJ Servers - <b>New!</b>	28	Identification Chains	43	Thermal Container	63

## Helpful Symbols



Warranty - Guaranteed by Service Ideas, Inc. for number of years indicated.



NSF Approved - Approved by the National Sanitation Foundation.



Dishwasher Safe - Safe in standard and commercial dishwashers.



Temperature Retention - Retains hot/cold temperature for amount of hours indicated.



Made in the U.S.A. - Product is made in the United States of America.



ETL Listed - Meets requirements for product safety standards.

# Innovation

AT THE TABLE

PICTURED: HS13BL + SK10CH

## HOT SOLUTIONS™ PLATTER/SKILLET



Constructed from plastic with polyester blend insulation. Innovative insulation tolerates temperatures to 500° F while preventing heat transfer. Custom colors available. Quantities 96-239 require a \$250 color matching charge. Quantities over 240 have no additional charge. **For longer life recommend low temperature dishwasher.**

Case pack: 6 each.

HS13BL	Black plate holder 12.5" x 9" x 1.5" (31.5 cm x 23 cm x 4.8 cm)
HS15BL	Black plate holder - <b>NEW</b> 11" x 15" x 1.5" (27.9 cm x 25 cm x 4.8cm)
SK10CI	Cast iron skillet without handle 7.25" x 10" x 0.75" (18.5 cm x 25 cm x 1.9 cm)
SK10CIH	Cast iron skillet with handle 7.25" x 10" x 0.75" (18.5 cm x 25 cm x 1.9 cm)
RP18	Cast iron skillet round - <b>NEW</b> 9.25" (23.5 cm)



HS13 + SK10CIH  
BLACK



HS15BL  
BLACK



SK107BHC  
BIRCHWOOD

## + Innovation

LIGHTWEIGHT INSULATION AND  
HEAT CORE MEANS PLATE IS  
COOL TO THE TOUCH.

500°F or below  
skillet placed on plate



HS13 CUTAWAY

## FEATURES:

- The lightweight insulation protects the table from heat transfer.
- Side rails protect hands from hot skillet.
- The edge is rolled for an upscale look and easy handling.
- The platter fits any standard fajita skillet and includes room for the skillet to expand when heated.
- A notched foot holds the skillet steady and allows for draining when washing.
- Platters are stackable.
- Custom colors, shapes, and molded logos are available.



CUSTOM COLORS AVAILABLE  
UPON REQUEST

## WOOD PLATTER/SKILLET



Skillet constructed from sandcast aluminum, holder made from wood. Real wood holders, lightweight skillet. **Hand wash.**

Case pack: 12 each (Completes & Parts).

SK107BHC	Birchwood holder w/ sandcast skillet with Skillet: 7.25" x 9.5" (18.4 cm x 24.1 cm) with 5" (12.7 cm) handle, Holder: 9" x 12" (22.9 cm x 30.5 cm)
----------	---

PARTS	SK107BH Birchwood holder for SK107CA SK107CA Sandcast fajita skillet with handle
-------	---



## THERMO-PLATE™ PLATTERS



Plate constructed from 304 bright annealed, .048 gauge stainless, optional aluminum (RO117), the holder from polyester. Stackable. Optional escargot (RT7/701) and oyster (RT10) insets for rounds. **Hand wash the plate, the holder is dishwasher safe.**

Case pack: 12 each, 6 each (FP3), (Completes & Parts). Custom colors and cresting available.

### ORIGINALS

<b>OT11C</b>	Small original holder/insert Plate: 6.5" x 11" (16.5 cm x 27.9 cm) Holder: 8" x 12.5" (20.3 cm x 30.5 cm)
<b>LO12C</b>	Large original holder/insert Plate: 8" x 12.5" (20.3 cm x 31.8 cm) Holder: 9.5" x 14" (24.1 cm x 35.6 cm)

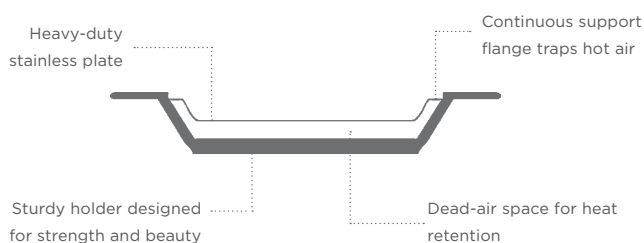
<b>PARTS</b>	<b>OT11BL</b>	Holder for OT11SS
	<b>OT11SS</b>	11" Stainless insert
	<b>LO12BL</b>	Holder for LO12SS
	<b>LO12SS</b>	12" stainless insert
	<b>LO125SS</b>	6"(half) stainless insert (order 2 for each holder)

### OVALS

<b>RO128C</b>	Oval holder/insert Plate: 11.75" x 7.75" (29.8 cm x 19.7 cm) Holder: 13.75" x 10" (34.9 cm x 25.4 cm)
<b>RO117AC</b>	Handle holder/aluminum insert Plate: 11.25" x 7.25" (29.8 cm x 18 cm) Holder: 13.75" x 8.5" (34.9 cm x 21.6 cm)
<b>RO117C</b>	Handle holder/stainless steel Plate: 11.25" x 7.25" (29.8 cm x 18 cm) Holder: 13.75" x 8.5" (34.9 cm x 21.6 cm)

<b>PARTS</b>	<b>RO128BL</b>	Oval holder for RO128SS
	<b>RO128SS</b>	Oval 11.75" stainless insert
	<b>RO117BL</b>	Handle holder for RO117SS or RO117AL
	<b>FPI/RO117AL</b>	Handle aluminum insert FOR RO117
	<b>FPI/RO117SS</b>	Handle stainless insert FOR RO117

### HOW THERMO-PLATE™ PLATTERS WORK



### ROUNDS

<b>RT10C</b>	10" round holder/insert Plate: 10" (25.4 cm) Holder: 12" (30.5 cm)
<b>RT1025C</b>	10.25" holder/insert Plate: 10.25" (26 cm) Holder: 12.25" (31.1 cm)
<b>RT7C</b>	7" sloping holder/insert Plate: 7.5" (19.1 cm) Holder: 9.5" (24.1 cm)
<b>RT701C</b>	7" holder/insert Plate: 7.5" (19.1 cm) Holder: 9.5" (24.1 cm)

<b>PARTS</b>	<b>RT10BL</b>	10" holder for RT10SS
	<b>RT10SS</b>	10" stainless steel insert
	<b>RT010SS</b>	10" stainless steel oyster insert
	<b>RT1025BL</b>	10.25" holder for RT1025SS
	<b>RT1025SS</b>	10.25" stainless steel insert
	<b>RT7BL</b>	7" sloping rim holder for RT7SS
	<b>RT7SS</b>	7" stainless steel insert
	<b>RT701BL</b>	7" straight rim holder for RT7SS
	<b>RTE7SS</b>	7" stainless steel escargot insert

### FISH

<b>FPIAC</b>	Small fish holder/aluminum insert Plate: 11.75" x 7.25" (29.8 cm x 18.4 cm) Holder: 14.25" x 9.75" (36.2 cm x 24.8 cm)
<b>FPIC</b>	Small fish holder/stainless insert Plate: 11.75" x 7.25" (29.8 cm x 18.4 cm) Holder: 14.25" x 9.75" (36.2 cm x 24.8 cm)
<b>FP3C</b>	Super fish holder/stainless insert Plate: 14" x 8.5" (35.6 cm x 21.6 cm) Holder: 21" x 13.75" (53.3 cm x 34.9 cm)

<b>PARTS</b>	<b>FPI</b>	Small fish holder for FPI/RO117AL or FPI/RO117SS
	<b>FPI/RO117AL</b>	Handle aluminum insert for FPI
	<b>FPI/RO117SS</b>	Handle stainless insert for FPI
	<b>FP3</b>	Super fish holder for FP3SS
	<b>FP3SS</b>	Super stainless fish insert



BKOV  
STAINLESS



BKRD7  
BKRO  
STAINLESS



BKWI  
STAINLESS



BKTA  
STAINLESS

## BREAD BASKETS

Constructed from a lightweight stainless steel. Available in convenient sizes. Constructed from chromed metal wire, BKTA combination of 38 and 60 gauge, BKWI 50 gauge. **Hand wash.**  
Case pack: 1 each.

<b>BKOV</b>	Large oval basket 11" x 7.5" (27.9 cm x 19.1 cm)
<b>BKRD7</b>	7" round basket 7" (17.8 cm)
<b>BKRO</b>	9" round basket 9.5" (24.1 cm)
<b>BKTA</b>	Tall bread basket 10" x 11" x 12" (25.4 cm x 27.9 cm x 30.5 cm)
<b>BKWI</b>	Wide bread basket 13" x 7.5" x 4" (33 cm x 19.1 cm x 10.2 cm)



0355010000  
TRANSPARENT CRYSTAL  
WITH STAINLESS

## CRYSTAL WINE CHILLER

Constructed from double walled acrylic and stainless steel. Features integrated cooling liquid. Holds 4" diameter bottle. **Hand wash.**  
Case pack: 1 each.

<b>0355010000</b>	Transparent crystal wine chiller 5.25" x 8" (13 cm x 18.7 cm)
-------------------	--

### + Innovation

PROVIDES FROST LOOK.  
MAINTAINS CHILL WITH  
INTEGRATED COOLING LIQUID.



WC1  
BRUSHED STAINLESS

## STAINLESS WINE CHILLER

Constructed from stainless steel. Features double-wall construction that eliminates condensation. Fits 4" diameter bottle. **Hand wash.**  
Case pack: 1 each.

<b>WC1</b>	Wine chiller 7.75" x 4.75" (19.7 cm x 12.1 cm)
------------	---

## About Lux OFFERED BY SERVICE IDEAS, INC.

Since 1967 Lux has produced handcraft glass, creating original pieces for table service. Following the most up-to-date market requests and offering a wide range of shapes, models and colors.

Since 2005, Lux offers even more. The 31.000 sqm building can house up to 12.000 pallets for more efficient warehousing, giving us the possibility to raise our customer service.

Let the Tuscany glass collection set the mood with unique table presentations that can be enjoyed everyday. Lux sets the table with charger plates, drinking glasses, pizza plates and sushi plates. The beauty of the glass overlapping makes the table the star for any event.

Let Lux emphasize every moment with bright colors, chic nuances and charming design.

The Tuscany glass collection is from the Montelupo Fiorentino, Italy, one of the most productive areas for glass items since the early 1500's, and is 1/4" thick, the appropriate thickness for hotel and restaurant use. It features colors that are in the glass material and won't fade or wear off.

Service Ideas, Inc. offers a new selection in the rain pattern as well as the Eco-Line, satin, nuage and others. All items are in convenient case packs.

### QUICK REFERENCE SIZES & SHAPES

	Dessert 4" - 6.5"	Lunch/Salad 7" - 8.5"	Dinner 9" - 10.5"	Charger 11"+	Page
ROUND					
Nuage Satin Standard				8003221	10
Nuage Satin Wavy				8009221	10
Nuage Shiny Standard				800343	10
Nuage Shiny Wavy				800943	10
Rain		7226	7225		9
Lined				8001	12
Pebbled				8003	12
Metropolis	7344	7345		7347/7348	13
OVALS					
Rain			7134	7135	9
Metropolis			7350		13
SQUARE					
Eco-Line	9515		9502	9504	15
Rain		7270	7272	7273	9
Metropolis	7367				13
RECTANGLE					
Eco-Line		9506	9507	9509	15
Rain	7140	7139	7138	7114	9
TRIANGLE					
Eco-Line		9522		9511	15
Triangle				8130	14
RAIN DROP					
Rain		7215	7211	7212	9

## TUSCANY GLASS™ RAIN COLLECTION



Ingrained etched pattern gives a rain effect which shimmers in light. 1/4" glass. Produced in the appropriate thickness for hotel and restaurant use. Made in Italy. **Subject to 8 week lead time on special and volume orders. Dishwasher Safe.**

Case pack as noted.

### RECTANGLES

<b>7114CL</b>	Rectangle plate (6 each) 11.75" x 7.8" (29.8 cm x 19.8 cm)
<b>7138CL</b>	Rectangle plate (6 each) 9.75" x 6.25" (24.8 cm x 15.9 cm)
<b>7139CL</b>	Rectangle plate (6 each) 7.5" x 5" (19.1 cm x 12.7 cm)
<b>7140CL</b>	Rectangle plate (12 each) 6" x 4" (15.2 cm x 10.2 cm)

### OVALS

<b>7134CL</b>	Oval plate (12 each) 9.5" x 7.5" (24.1 cm x 19.1 cm)
<b>7135CL</b>	Oval plate (12 each) 12" x 10.25" (30.5 cm x 26 cm)

### ROUNDS

<b>7225CL</b>	Round plate (12 each) 10.6" (26.9 cm)
<b>7226CL</b>	Round plate (12 each) 8.25" (21 cm)

### RAIN DROPS

<b>7211CL</b>	Rain drop plate (6 each) 9" x 8" (22.9 cm x 20.3 cm)
<b>7212CL</b>	Rain drop plate (6 each) 11.25" x 9.75" (38.6 cm x 24.8 cm)
<b>7215CL</b>	Rain drop plate (6 each) 8.8" x 7.8" (22.4 cm x 19.8 cm)
<b>7216CL</b>	Rain drop bowl (6 each) 7.5" x 6.5" (19.1 cm x 16.5 cm)
<b>7217x</b>	Rain drop clear candle holder (12 each) 3.25" x 3" (8.3 cm x 7.6 cm) Colors available: black (BL), clear (CL)

### SQUARES

<b>7270CL</b>	Square coupe plate (12 each) 8.6" (21.8 cm)
<b>7272CL</b>	Square coupe plate (12 each) 10.6" (26.9 cm)
<b>7273CL</b>	Square coupe plate (6 each) 12.8" (32.5 cm)
<b>7271CL</b>	Square coupe plate (6 each) - <b>NEW</b> 9.85" (25 cm)

### TUMBLERS

<b>7110CL</b>	10 oz clear tumblers (6 each) - <b>NEW</b> 4" (10.2 cm)
<b>7111CL</b>	8.5 oz clear tumblers (6 each) - <b>NEW</b> 3.5" (8.9 cm)

### CANDLE HOLDER

<b>8175CL</b>	Clear candle holder (6 each) - <b>NEW</b> 3.2" x 3.2" x 3.5" (8.1 cm x 8.1 cm x 8.9 cm)
---------------	--

### RAIN RECTANGLES CLEAR

7114CL/  
7138CL

7139CL/  
7140CL

### RAIN OVALS & ROUNDS CLEAR

7135CL

7225CL

7134CL

7226CL

### RAIN DROPS CLEAR

7212CL

7216CL

7217CL

7217BL

### RAIN SQUARES CLEAR

7273CL/7270CL

7271CL/7272CL

### RAIN TUMBLERS CLEAR



7110CL  
10 OZ



7111CL  
8.5 OZ



8175CL

## TUSCANY GLASS™ NUAGE COLLECTION



Specify color when ordering. 1/4" glass. Produced in the appropriate thickness for hotel and restaurant use. Made in Italy. **Subject to 8 week lead time on special and volume orders. Dishwasher Safe.**

Case pack as noted.

**NUAGE SHINY STANDARD RIM**  
WHITE & GREEN  
800343



**NUAGE SATIN STANDARD RIM**  
WHITE & GREEN  
8003221



## Work Together

NUAGE PLATES  
+ NUAGE TUMBLERS (PG.11)

### STANDARD RIM

- |                |  |
|----------------|--|
| <b>800343</b>  | Shiny standard rim plate (6 each)<br>12.5" (32 cm) |
| <b>8003221</b> | Satin standard rim plate (6 each)<br>12.5" (32 cm) |
|                | Stocked colors: green (GRN), white (WH)            |

### WAVY RIM

- |                |  |
|----------------|--|
| <b>800943</b>  | Shiny wavy rim plate (6 each)<br>13" (34 cm) |
| <b>8009221</b> | Satin wavy rim plate (6 each)<br>13" (34 cm) |
|                | Stocked colors: green (GRN), white (WH)      |

**NUAGE SHINY WAVY RIM**  
WHITE & GREEN  
800943



**NUAGE SATIN WAVY RIM**  
WHITE & GREEN  
8009221



## + Innovation

COLORS ARE SWIRLED INTO  
GLASS SO NO TWO ITEMS  
LOOK THE SAME.



**NUAGE SHINY ESPRESSO**  
WHITE, CLEAR, BROWN  
708343 (CUP), 708543 (SAUCER)



**NUAGE SHINY CAPUCCINO**  
WHITE, CLEAR, BROWN  
708443 (CUP), 708643 (SAUCER)

#### ESPRESSO

- 7083CL** Clear shiny espresso 3 oz cup (6 each)  
2.5" x 3.5" x 2.5" (6.4 cm x 8.9 cm x 6.4 cm)
- 708343** Shiny espresso 3 oz cup (6 each)  
2.5" x 3.5" x 2.5" (6.4 cm x 8.9 cm x 6.4 cm)
- 7085CL** Clear shiny espresso saucer (6 each)  
4.5" (11.3 cm)
- 708543** Shiny espresso saucer (6 each)  
4.5" (11.3 cm)
- Stocked colors: white, brown, clear

#### CAPUCCINO

- 7084CL** Clear shiny capuccino 5 oz cup (6 each)  
4.5" x 3.5" x 2.5" (11.4 cm x 6 cm x 6.4 cm)
- 708443** Shiny capuccino 5 oz cup (6 each)  
4.5" x 3.5" x 2.5" (11.4 cm x 6 cm x 6.4 cm)
- 7086CL** Clear shiny capuccino saucer (6 each)  
5.5" (13.3 cm)
- 708643** Shiny capuccino saucer (6 each)  
5.5" (13.3 cm)
- Stocked colors: white, brown, clear

#### TUMBLER

- 8285/43WH** White 10 oz tumbler (6 each) - **NEW**  
4" (10.2 cm)

## Nuage SPECIAL ORDER ASSORTED STYLES & COLORS



**TUMBLER WHITE** - 8285/43WH



**NUAGE PLATES ASSORTED STYLES & COLORS (SPECIAL ORDER)**

**LINED**  
BLUE, CLEAR

8001

**PEBBLED**  
BLUE, CLEAR

8003

**CAKE STAND**  
CLEAR8880/221WH  
WHITE8913CL  
CLEAR**TUMBLERS**  
CLEAR8477CL  
8.5 OZ8478CL  
10 OZ8479CL  
13.5 OZ**TUSCANY GLASS™ COLLECTION**

Produced in Montelupo Fiorentino, Italy, one of the most productive areas for glass items since early 1500's. 1/4" glass. Produced in the appropriate thickness for hotel and restaurant use. Made in Italy. **Subject to 8 week lead time on special and volume orders. Dishwasher Safe.**

Case pack as noted.

**LINED**

**8001** Lined plate (6 each)  
12.5" (32 cm)  
Colors available: clear (CLR), blue (BLU)

**PEBBLED**

**8003** Pebbled plate (6 each)  
12.5" (32 cm)  
Colors available: clear (CLR), blue (BLU)

**CAKE STANDS**

**8880/221WH** Nuage white footed cake stand (1 each)  
10.5" x 3.5" (27 cm x 9 cm)

**8913CL** Footed cake stand with lip (1 each) - **NEW**  
10.5" x 3.5" (27 cm x 9 cm)

**TUMBLERS**

**8477CL** 8.5 oz clear tumbler (6 each) - **NEW**  
3.5" (8.9 cm)

**8478CL** 10 oz clear tumbler (6 each) - **NEW**  
4" (10.2 cm)

**8479CL** 13.5 oz clear tumbler (6 each) - **NEW**  
4.75" (12.1 cm)

## TUSCANY GLASS™ METROPOLIS



Crackled, collage pattern offers a new look and feel to old world glass. 1/4" glass. **Subject to 8 week lead time on special and volume orders. Dishwasher Safe.**

Case pack as noted.

## OVALS

**7350CL** Oval plate (6 each)  
9.5" x 7.5" (24 cm x 49 cm)

## ROUNDS

**7344CL** Round plate (12 each)  
6.3" (16 cm)

**7345CL** Round plate (12 each)  
8.25" (16 cm)

**7347CL** Round plate (6 each)  
12.5" (21 cm)

**7348CL** Round plate (6 each)  
14.6" (31.8 cm)

## SQUARE

**7367CL** Square plate (12 each)  
5.5" (14 cm)

## CENTERPIECE/BOWL

**7358CL** Centerpiece bowl (6 each)  
11.8" x 1.8" (30 cm x 4.5 cm)

## TUMBLER

**7355CL** Tumbler (6 each) 10 oz  
4" (10.2 cm)



7350CL



7344CL

7348CL



7355CL



7358CL



7367CL



## TUSCANY GLASS™

Customize your servingware! Special order the size and compartments you need. 1/4" glass. Produced in the appropriate thickness for hotel and restaurant use. Made in Italy. **Subject to 8 week lead time on special and volume orders. Dishwasher Safe.**

Case pack as noted.

### NUVOLA CLEAR W/GREEN TINT



### NUVOLA

Compartments: 3" x 3" x 2"

Capacity: ≤ 3/4 cup dry or 6 fluid oz. per compartment.

- |               |  |
|---------------|--|
| <b>1801CL</b> | Antipasta 3 compartment (not shown) (6 each)<br>16" x 6" (41 cm x 15 cm) |
| <b>1802CL</b> | Antipasta 2 compartment (6 each)<br>11.5" x 6" (29 cm x 15 cm)           |
| <b>1803CL</b> | Antipasta 4 compartment (6 each)<br>11" x 11" (28 cm x 28 cm)            |

### GOURMET SATIN



### GOURMET

- |                  |  |
|------------------|--|
| <b>8948202SA</b> | Gourmet bowl satin (6 each)<br>2.375" x 7.5" (6 cm x 19 cm)              |
| <b>8949202SA</b> | Gourmet bowl satin (6 each)<br>2.375" x 11.5" (6 cm x 29 cm)             |
| <b>8950202SA</b> | Gourmet bowl satin (6 each)<br>4" x 12.5" (10 cm x 32 cm)                |
| <b>8951202CL</b> | Gourmet plate satin (6 each)<br>12.5" (32 cm)<br>Colors available: satin |

### SCOMPARTI

- |               |   |
|---------------|---|
| <b>1406CL</b> | Quadro 5 compartment (6 each)<br>11.75" x 1.25" (29 cm x 3 cm)<br>Small compartments: 2" x 2.25" x .25" deep<br>Large compartments: 8.5" x 5.5" x .25" deep |
|---------------|---|

### SCOMPARTI CLEAR W/GREEN TINT



1406CL

### TRIANGLE

- |                  |  |
|------------------|--|
| <b>8130201SA</b> | Triangle satin (6 each)<br>12.5" (32 cm) |
|------------------|--|

### TRIANGLES SATIN



8130201SA

**+ Innovation**CUSTOM DESIGNS AVAILABLE AT  
300 MINIMUM ORDER QUANTITY**3 COMPARTMENT**  
CLEAR W/GREEN TINT

SMALL 9521



LARGE 9520

**SQUARE**  
CLEAR W/GREEN TINT

9504/9502

**RECTANGLE**  
CLEAR W/GREEN TINT

9509/9507

9506

**TUSCANY GLASS™ ECO-LINE**1/4" glass. **Subject to 8 week lead time on special and volume orders. Dishwasher Safe.**

Case pack as noted.

**ECO-LINE COMPARTMENTS**

- 9521** Compartment tray (6 each)  
Compartment sizes: 3" x 1.25" x .25" deep  
9.875" x 6" (25 cm x 15 cm)
- 9520** Compartment tray (6 each)  
Compartment sizes: 4.25" x 3.5" x .25" deep  
15.75" x 7.5" (39.3 cm x 19 cm)

**ECO-LINE SQUARES**

- 9515** Square plate (12 each)  
4.75" (12 cm)
- 9502** Square plate (6 each)  
9.875" (25 cm)
- 9504** Square plate (6 each)  
12.25" (31 cm)

**ECO-LINE RECTANGLES**

- 9506** Rectangle plate (12 each)  
7.875" x 4" (19.6 cm x 10.1 cm)
- 9507** Rectangle plate (6 each)  
9.875" x 6" (25 cm x 15 cm)
- 9509** Rectangle plate (6 each)  
13.75" x 8.25" (35 cm x 21 cm)

**ECO-LINE TRIANGLES**

- 9522** Triangle plate (12 each)  
8.25" (21 cm)
- 9511** Triangle plate (12 each)  
11" (27.5 cm)

**TRIANGLE**  
CLEAR W/GREEN TINT

9522

9511

SY916  
AL / ALMONDSY916  
BL / BLACKSY916  
WH / WHITESZ10  
BL / BLACKSZ10RED  
RED / RED COVERSZ10YL  
YL / YELLOW COVER

## Work Together

SYRUP DISPENSER  
+ TABLE CADDY

SZS4  
STAINLESSSZC4  
COPPER

## SYRUP DISPENSERS



SAN plastic construction. Flow restricted pour. **Dishwasher safe.**

Case pack: 6 each.

Specify color when ordering.

**SY916** Syrup dispenser .5 L (16 oz)  
5.75" x 3" (13.3 cm x 7.6 cm)

**PARTS** **SYL** SY dispenser lid for SY916 (case pack 12)  
**SYJ916** SY dispenser jar for SY916 (case pack 12)

## SYRUP SAVER™ DISPENSERS



Polycarbonate plastic construction. Optional embossed syrup flavors on the lid. Can heat in syrup warmer to 140 degrees.

Specify color when ordering. **Dishwasher safe.**

Case pack: 12 each.

**SZ10BLBLU** Blueberry syrup dispenser .3 L (10 oz)  
2.75" x 4.5" x 5" (7 cm x 11.4 cm x 12.7 cm)

**SZ10BLBP** Butter pecan syrup dispenser .3 L (10 oz)  
2.75" x 4.5" x 5" (7 cm x 11.4 cm x 12.7 cm)

**SZ10BLBY** Boysenberry syrup dispenser .3 L (10 oz)  
2.75" x 4.5" x 5" (7 cm x 11.4 cm x 12.7 cm)

**SZ10BLST** Strawberry syrup dispenser .3 L (10 oz)  
2.75" x 4.5" x 5" (7 cm x 11.4 cm x 12.7 cm)

**SZ10XX** Plain syrup dispenser .3 L (10 oz)  
2.75" x 4.5" x 5" (7 cm x 11.4 cm x 12.7 cm)

**PARTS** **SZLXX** Replacement lid for SZ10XX, state flavor or color when ordering  
**SZJ10CL** Replacement jar for SZ10BL

## + Innovation

DESIGN FEATURES FLAT SIDES  
AND FLOW CONTROL.

## TABLE CADDYS



Stainless and plastic construction. Holds four SZ10 syrup bottles (not included). Available in stainless or copper. **Dishwasher safe.**

Case pack: 4 each.

**SZS4** Syrup stainless caddy  
12.25" x 3.5" x 3.25" (31.1 cm x 8.9 cm x 8.3 cm)

**SZC4** Syrup copper caddy  
12.25" x 3.5" x 3.25" (31.1 cm x 8.9 cm x 8.3 cm)

## + Innovation

CREATE YOUR IDEAL  
CONDIMENT SET.STOCFCR  
STAINLESSSTOCPSCR  
STAINLESSSTOSPSH  
STAINLESS

## TABLE ORGANIZERS

Constructed from stainless steel. Choose from a variety of options to create one for your needs. Holds 3/4 cup of dry condiments.

**All parts sold separately. Hand wash.**

Case pack: 1 each sets/6 each parts.

## STOSPSH

Salt and pepper set with holder

5.25" x 2" (13.3 cm x 5.1 cm), 6.25" x 2" (15.9 cm x 5.1 cm)

<b>STOH2</b>	2 condiment stainless steel holder
<b>STC7</b>	Plain stainless 7 hole top
<b>STC3</b>	Plain stainless 3 hole top

## STOCFF

PLAIN 4 pack coffee condiment set with holder

5.25" x 2" (13.3 cm x 5.1 cm), 6.25" x 2" (15.9 cm x 5.1 cm)

<b>STOH4</b>	4 condiment stainless steel holder
<b>STC7</b>	Plain stainless 7 hole top
<b>STCMESH</b>	Plain stainless mesh top
<b>STCMULTI</b>	Plain stainless multi-hole top
<b>STCTEAR</b>	Plain stainless tear-drop top

## STOCPSCR

CRESTED 2 pack coffee condiment set with holder

5.25" x 2" (13.3 cm x 5.1 cm), 6.25" x 2" (15.9 cm x 5.1 cm)

<b>STOH2</b>	2 condiment stainless steel holder
<b>STCMESHPSUGR</b>	Powdered sugar crested stainless mesh top
<b>STCMULTICINN</b>	Cinnamon crested stainless multi-hole top

## STOCFCR

CRESTED 4 pack coffee condiment set with holder

5.25" x 2" (13.3 cm x 5.1 cm), 6.25" x 2" (15.9 cm x 5.1 cm)

<b>STOH4</b>	4 condiment stainless steel holder
<b>STC7VANILLA</b>	Vanilla crested stainless 7 hole top
<b>STCMESHNUTM</b>	Nutmeg crested stainless mesh top
<b>STCMULTICINN</b>	Cinnamon crested stainless multi-hole top
<b>STCTEARCOCOA</b>	Cocoa crested stainless tear-drop top

## Work Together

SUGAR/CREAMER SET +  
WJ SERIES SERVER (P.28)

SSC85  
BRUSHED STAINLESS  
W/ CHROME

SPH3BL

## SUGAR/CREAMER SET



Constructed from 18/8 stainless steel with a chrome plated plastic lid. Features a space saving, stylish design. **Dishwasher safe.**

Case pack: 1 each/master case 24 each complete sets/6 each creamer only.

<b>SSC85</b>	Sugar/creamer set (8.5 oz) 4.75" x 2.5" (12.1 cm x 6.7 cm)
<b>SC85</b>	Creamer (8.5 oz) 4.75" x 2.5" (12.1 cm x 6.7 cm)
<b>SS85</b>	Sugar (8.5 oz) 4.75" x 2.5" (12.1 cm x 6.7 cm)

<b>PARTS</b>	<b>SLC85</b> Creamer replacement lid
	<b>SLS85</b> Sugar replacement lid
	<b>SC85GAS</b> Creamer gasket

## SUGAR PACKET HOLDER



Constructed from black ABS plastic. Custom colors available. Minimum order quantity for custom color is 600 pieces.

**Dishwasher safe.**

Case pack: 12 each

<b>SPH3BL</b>	Black sugar packet holder 2.5" x 3" x 3.5" (6.4 cm x 7.6 cm x 8.9 cm)
<b>SPH5BL</b>	Black sugar packet holder - <b>NEW</b> 5" x 2.75" x 2.25" (12.7 cm x 7 cm x 5.7 cm)

STEEPED IN

# Innovation

PICTURED: LOO2Z 1.2 LITER BLACK

## TEA CHEST

Constructed from Beachwood. The tea boxes feature a see through plastic lid with individual compartments for merchandising and storing tea.

Compartments: 2.75" L x 2.38" W x 2.13" D. **Wipe with dry cloth.**

Case pack: 1 each.

<b>TB006</b>	6 compartment tea chest 2.75" x 8.25" x 7.25" (7 cm x 21 cm x 18.5 cm)
<b>TB012</b>	12 compartment tea chest 2.75" x 11" x 10.75" (7 cm x 28 cm x 27.5 cm)



TB006  
6 COMPARTMENT



TB012  
12 COMPARTMENT

## Brewing Tea

- Use fresh or bottled water whenever possible. Water quality is important to the flavor of the tea.
- For black teas, bring the water to a full rolling boil, but do not over-boil the water. For green teas, bring the water just to the boiling point (steaming.)
- Fill your teapot with hot water to pre-warm before adding tea leaves and hot water to the pot.
- Add one level teaspoon of tea leaves for every cup of water. Add the leaves directly to the pot, or use a tea strainer or infusing basket.
- Pouring hot water over tea leaves starts the steeping process.
- Steep full black leaves four to five minutes. Steep green teas and smaller leaf teas for three minutes.
- Experiment with brewing times and the amount of tea leaves used to adjust to your own taste.

## CERAMIC 'CAST IRON LOOK' TEA POT

Constructed from ceramic. This tea pot features the look of cast iron, but is light weight ceramic. Includes infuser basket. **Hand wash.**

Case pack: 1 each.

<b>L001Z</b>	.75 Liter (24.1 oz) teapot 5.25" x 7" x 6" (13.5 cm x 18 cm x 15 cm)
<b>L002Z</b>	1.2 Liter (40.6 oz) teapot 5.75" x 8" x 6.5" (14.5 cm x 20 cm x 16.5 cm)

<b>PARTS</b>	<b>LTPLBL</b> Lid for L00XZ
	<b>LTPB</b> Infuser basket for L00XZ



L001Z  
BLACK  
.75L



L002Z  
BLACK  
1.2L

BOTH SIZES AVAILABLE IN BLACK CERAMIC.



4286000  
BLACK  
1.8L



4282000  
BLACK  
.7L



4285000  
BLACK  
1.2L



4245002  
WHITE  
.5L



4244900  
WHITE  
1.25L



4246000  
BLACK  
6 OZ



4217000



4270000

## FINUM - NEW

Founded by A. Riensch in 1845. Bring out the best in tea and coffee with Riensch-Held innovative designs. No parts available.  
**Hand wash recommended.**

Case pack: 1 each.

### ICED TEA CONTROL

4286000 1.8 L (60 oz) ice tea control with black lid  
3" x 7" x 9.5" (7.6 cm x 17.8 cm x 24.1 cm)

### TEA CONTROL

4282000 .7 L (24 oz) black tea control with black lid  
4.75" x 6.25" x 5.5" (12.1 cm x 15.9 cm x 14.0 cm)

4285000 1.2 L (40 oz) black tea control with black lid  
3" x 9.75" x 5.5" (7.6 cm x 24.8 cm x 14.0 cm)

### ENGLISH TEA POT

4244900 1.25 L (42 oz) english tea pot  
4.2" x 9.5" x 5" (10.7 cm x 24.1 cm x 12.7 cm)

4245002 .5 L (16 oz) english tea pot  
3.25" x 7.25" x 5" (8.3 cm x 18.4 cm x 12.7 cm)

### TEA GLASS SYSTEM

4246000 6 oz tea glass system  
2.5" x 4.25" x 4.25" (6.4 cm x 10.8 cm x 10.8 cm)

### UNIVERSAL FILTER

4217000 Universal filter  
2" x 4.25" x 4.75" (5.1 cm x 10.8 cm x 12.1 cm)

### TEA WARMER

4270000 Stainless tea warmer  
1.75" x 5.75" x 3" (4.4 cm x 14.6 cm x 7.6 cm)



TB600CC  
BLACK  
.6L



TPC10  
BL / BLACK  
.3L



TPC10  
FG / FOREST GREEN  
.3L



TPC16  
WH / WHITE  
.5L

BOTH SIZES AVAILABLE IN ALL 3 COLORS.

## TEA BALL

Plastic exterior with a glass liner. Features a removable tea basket and portion spoon included. **Linens dishwasher safe.**

Case pack: 1 each.

<b>TB600CC</b>	.6 (20 oz) Liter tea ball 5.25" x 5.75" x 4" (13.3 cm x 14.6 cm x 10.2 cm)
----------------	---

<b>PARTS</b>	<b>TB600BDY</b>	TB600CC plastic body/shell
	<b>TB600BKSCOOP</b>	TB600CC plastic scoop
	<b>TB600BSK</b>	TB600CC infuser basket
	<b>TB600COL</b>	TB600CC plastic collar
	<b>TB600LID</b>	TB600CC plastic lid
	<b>TB600LNR</b>	TB600CC glass liner

## CERAMIC TEA POTS



Constructed from ceramic. Features a clip on/off lid and infuser basket. Specify color when ordering. **Dishwasher safe.**

Case pack: 6 each.

<b>TPC10</b>	.3 Liter (10 oz) tea pot 5.75" x 4.25" x 3" (14.6 cm x 10.8 cm x 7.6 cm)
<b>TPC16</b>	.5 Liter (16 oz) tea pot 6.25" x 5" x 3.25" (15.9 cm x 12.7 cm x 8.3 cm)

<b>PARTS</b>	<b>TPCLSS</b>	Clip on stainless lid
	<b>TPCBSK</b>	Basket 10 oz or 16 oz



TS612AL  
ALMOND



TS612BL  
BLACK



TS612BU  
BURGUNDY



TS612CBT  
COBALT  
BLUE



TS612FG  
FOREST  
GREEN



TS612GR  
GRAY



TS612MV  
MAUVE



TS612ST/BR  
STONEWARE  
W/ BROWN



TS612ST/BU  
STONEWARE  
W/ BURGUNDY



TS612ST/COB  
STONEWARE  
W/ COUNTRY BLUE



TS612WH  
WHITE

## PLASTIC TEAPOTS



Plastic construction with double wall insulation. Stackable. Tether option to attach lid. Optional custom cresting available. Specify color when ordering. Customization Options: Custom color - 300 each minimum. Molded insert - \$1,400 net, 300 initial and reorder minimum. **Dishwasher safe.**

Case pack: 6 each.

### STANDARD

<b>TS612</b>	.5 Liter (16 oz) tea pot 6" x 3.5" (15.2 cm x 8.9 cm)
--------------	--

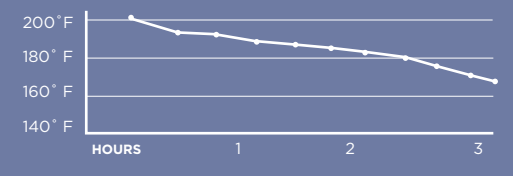
### TETHER

<b>TST612</b>	.5 Liter (16 oz) tea pot with tether 6" x 3.5" (15.2 cm x 8.9 cm)
---------------	--

<b>PARTS</b>	<b>TPL</b>	16 oz teapot lid (case pack 12)
	<b>TPLT</b>	16 oz teapot lid with tether (case pack 12)
	<b>TST</b>	Replacement tether

# Plastic-Lined SERVERS

HEAT RETENTION CHART



ALL TESTS ARE DONE AT FULL CAPACITY.

- Durable, impact-resistant ABS outer shell resists cracking, chipping and peeling
- Double wall body
- Environmentally safe polyurethane foam insulation
- Inner liner heat, impact and stain resistant
- Reinforced handle for added safety
- Completely sealed, all sonic welded body

## + Innovation

ERGONOMIC RUBBER HANDLE FOR COMFORTABLE POURING. DESIGNED IN PARTNERSHIP WITH AIRLINES.



GRAY  
1.4L



BLACK  
1.4L

## AEROSERV SERVERS - NEW



Lightweight design for compact spaces, safety and ergonomics. Functions as both a brewer pot and server. Lid indicator specifies R= Regular, D=Decaf, O=Other. **Dishwasher safe.**

Case pack: 12 each.

<b>AEROSERV1</b>	1.4 Liter (48 oz) gray server 4.75" x 8.5" x 6.75" (12.1 cm x 21.6 cm x 17.1 cm)
<b>AEROSERV3</b>	1.4 Liter (48 oz) black server 4.75" x 8.5" x 6.75" (12.1 cm x 21.6 cm x 17.1 cm)

<b>PARTS</b>	<b>AEROSERVLID3</b>	Gray lid for AEROSERV1
	<b>AEROSERVLID5</b>	Black lid for AEROSERV3

## Work Together

NEW GENERATION SERVERS  
+ SUGAR PACKET HOLDER (P. 17)



NG101BL  
BLACK  
1L

## NEW GENERATION® SERVERS



Durable ABS plastic construction with foam insulation. Optional decaf, Take-A-Part or Brew N' Pour™ lids available. Optional custom cresting available. Lid with Decaf imprint may be substituted by adding "D" to model number. Specify color when ordering. **Dishwasher safe, for longer life recommend hand wash.**

Case pack: 6 each.

<b>NG501</b>	.6 Liter (20 oz) server 8" x 4.5" (20.3 cm x 11.4 cm)
<b>NG101</b>	1 Liter (33.8 oz) server 9.25" x 5" (23.5 cm x 12.7 cm)
<b>NG421</b>	2 Liter (67.6 oz) server 11.25" x 6" (28.6 cm x 15.2 cm)

<b>PARTS</b>	<b>NGL</b>	NSF Take A-Part lid (case pack 12)
	<b>NGLW</b>	Welded push button lid (case pack 12)
	<b>BTL</b>	Brew-Thru lid (case pack 12)
	<b>NGLGAS</b>	Gasket for NGL (case pack 12)

**Application Suggestion** 2-3 hour retention required, heavy-duty usage, self-service, may be left on tables, ideal for chains, family restaurants, country clubs.

### PANTONE matching system

The Pantone Matching System (PMS) allows you to know the specific color of your servers so you can coordinate with color schemes of other pieces or decor. The following numbers represent the colors of the New Generation line:

Almond	726C	Country Blue	652C
Burgundy	209C	Forest Green	343C
Brown	476C	Gray	429C
Cobalt Blue	276C	Mauve	694C

**Let us match a custom color.** Custom colors available. Minimum order quantity of 300 pieces.

### COLORS



ST/COB  
STONEWARE  
W/COUNTRY BLUE



ST/BR  
STONEWARE  
W/BROWN



CBT  
COBALT BLUE



FG  
FOREST GREEN



BU  
BURGUNDY



AL  
ALMOND



MV  
MAUVE



GR  
GRAY



WH  
WHITE



ML501CH/BL  
CHROME W/BLACK  
.6L



ML101CH/BL  
CHROME W/BLACK  
1L



ML315CH/BL  
CHROME W/  
BLACK  
1.5L

## METALLIC LUSTER™ SERVERS



Plastic construction with foam insulation. Actual chrome powder finish. Lid with Decaf imprint may be substituted by adding "D" to model number. **Dishwasher safe, for longer life recommend hand wash.**

Case pack: 6 each.

ML501	.6 Liter (20 oz) server 8" x 4.5" (20.3 cm x 11.4 cm)
ML101	1 Liter (33.8 oz) server 9.25" x 5" (23.5 cm x 12.7 cm)
ML315	1.5 Liter (50.7 oz) server 11.75" x 5" (29.8 cm x 12.7 cm)

PARTS	NGLWBL	Black welded push button lid (case pack 12)
	NGLGAS	Gasket for NGLW (case pack 12)

**Application suggestion** 2-3 hour retention required, medium-duty service, self service, limited restaurants, business & industry.

## PUSH BUTTON METALLIC SERVERS



Durable metal body with protective coating, plastic liner and foam insulation. Classic design with safety push-button lid. Optional decaf, Take-A-Part or Brew N' Pour™ lids available. Optional custom cresting available. Lid with Decaf imprint may be substituted by adding "D" to model number. **Hand wash.**

Case pack: 6 each.

ML501M	.6 Liter (20 oz) server 6" x 4" x 8" (15.2 cm x 10.2 cm x 20.3 cm)
ML101M	1 Liter (33.8 oz) server 6.5" x 5" x 9.5" (16.5 cm x 12.7 cm x 24.1 cm)

PARTS	NGLWBL	Black welded push button lid (case pack 12)
	NGLGAS	Gasket for NGLW (case pack 12)

Work Together  
← METALLIC LUSTER SERVER +  
TABLE CADDIES (P.16) →



ML501MCPBL  
COPPER W/ BLACK  
.6L



ML101MSSBL  
STAINLESS W/BLACK  
1L

BOTH FINISHES AVAILABLE IN .6L OR 1L

## THERMO-SERV® PUSH BUTTON SERVERS



Durable ABS plastic shell with foam insulation. Classic design with safety push-button lid. Optional decaf, Take-A-Part or Brew N' Pour™ lids available. Optional custom cresting available. Lid with Decaf imprint may be substituted by adding "D" to model number. Specify color when ordering. **Dishwasher safe, for longer life recommend hand wash.**

Case pack: 6 each.

<b>PB501</b>	.6 Liter (20 oz) server 8" x 4.5" (20.3 cm x 11.4 cm)
<b>PB101</b>	1 Liter (33.8 oz) server 9.25" x 5" (23.5 cm x 12.7 cm)
<b>PB421</b>	2 Liter (67.6 oz) server 11.25" x 6" (28.6 cm x 15.2 cm)
<b>PB315</b>	1.5 Liter (50.7 oz) server <b>NOTE:</b> Available by special order, 45 day lead time, 120 minimum. Call for pricing.

<b>PARTS</b>	<b>NGLW</b>	Welded push button lid (case pack 12)
	<b>NGLGAS</b>	Gasket for NGLW (case pack 12)

**Application suggestion** 2-3 hour retention required, heavy-duty usage, self-service, may be left on tables, ideal for chains, family restaurants, country clubs.



PB501  
CB / COPPER  
W/ BLACK



PB421  
KB / GOLD  
W/ BLACK



PB101  
MG / METALLIC GRAY  
**NEW COLOR!**



PB101  
ST/BR / STONEWARE  
W/ BROWN



PB101  
BL / BLACK

ALL COLORS STOCKED IN 1 LITER SIZE.  
SPECIAL ORDER 20 OZ AND 2 LITER SIZES MAY INCUR  
2-4 WEEK LEAD TIME AND AN 84 PC MINIMUM.  
CALL FOR CURRENT INVENTORY.



TS411  
KB / GOLD  
W/ BLACK



TS501  
BL / BLACK



TS101  
CB / COPPER  
W/ BLACK

## THERMO-SERV® FLIP TOP SERVERS



The original plastic insulated server since 1956. Durable ABS shell with foam insulation. Classic design. Optional custom cresting available. Lid for Decaf may be substituted by adding "OR" for all orange lid. Specify color when ordering. **Dishwasher safe, for longer life recommend hand wash.**

Case pack: 6 each.

<b>TS501</b>	.6 Liter (20 oz) server 7.5" x 4.5" (19.1 cm x 11.4 cm)
<b>TS101</b>	1 Liter (33.8 oz) server 9" x 5" (22.9 cm x 12.7 cm)
<b>TS411</b>	2 Liter (67.6 oz) server 10.75" x 6" (27.3 cm x 15.2 cm)

<b>PARTS</b>	<b>TSL1</b>	Flip top lid for TS501/TS101 (case pack 12)
	<b>TSL2</b>	Flip top lid for TS411 (case pack 12)

**Application suggestion** 2-3 hour retention required, wait person service, banquets, water pitcher.



ECO6  
WH / WHITE  
.6L



ECO13  
BL / BLACK  
1.3L



FT10R  
DECAF  
INDICATOR  
TAB

BOTH COLORS AVAILABLE IN BOTH SIZES.

## ECO-SERV® SERVERS



Plastic exterior with foam insulation. Snap on decaf indicator. Specify color when ordering. **Dishwasher safe, for longer life recommend hand wash. Lids NOT dishwasher safe.**

Case Pack: 12 each. **Sold in case packs only.**

ECO6	.6 Liter (20 oz) server 7" x 5" x 6.5" (17.8 cm x 12.7 cm x 16.5 cm)
ECO13	1.3 Liter (44 oz) server 9.75" x 5" x 7" (24.8 cm x 12.7 cm x 17.8 cm)

PARTS	ECL	Lid for ECO6/ECO13 (case pack 12)
	FT10R	Decaf indicator tab (case pack 12)

**Application Suggestion** High quantity needed, 2-3 hour retention required, light service usage, never recommended for any application associated with the healthcare industry.

## TWIST N' SERV™ SERVERS



Plastic construction with foam insulation. Push button lid. Specify color when ordering. Twist top special order - lead time 60 days. **Hand wash.**

Case Pack: 12 each. **Sold in case packs only.**

### PUSH BUTTON

TNSPB20	.5 Liter (17 oz) server 7.25" x 3.5" x 5.25" (18.4 cm x 8.9 cm x 13.3 cm)
TNSPB40	1.2 Liter (40.1 oz) server 9.5" x 4.5" x 7" (24.1 cm x 11.3 cm x 17.8 cm)
TNSPB60	1.8 Liter (60.8 oz) server 11.5" x 5.25" x 7.5" (28.9 cm x 13 cm x 19.1 cm)

### TWIST LID - SPECIAL ORDER

TNS20	.5 Liter (17 oz) server 7.25" x 3.5" x 5.25" (18.4 cm x 8.9 cm x 13.3 cm)
TNS40	1.2 Liter (40.1 oz) server 9.5" x 4.5" x 7" (24.1 cm x 11.3 cm x 17.8 cm)
TNS60	1.8 Liter (60.8 oz) server 11.5" x 5.25" x 7.5" (28.9 cm x 13 cm x 19.1 cm)

PARTS	TNSPBL20	Push button lid for TNSPB20 (case pack 12)
	TNSPBL40	Push button lid for TNSPB40 (case pack 12)
	TNSPBL60	Push button lid for TNSPB60 (case pack 12)
	TNSL20	Twist lid for TNS20 (case pack 12)
	TNSL40	Twist lid for TNS40 (case pack 12)
	TNSL60	Twist lid for TNS60 (case pack 12)



TNS20  
WH / WHITE  
.5L



TNSPB40  
BL / BLACK  
1.2L



TNSPB60  
WH / WHITE  
1.8L

BOTH COLORS AVAILABLE IN ALL 3 SIZES.



DECAF  
INDICATOR  
TAB

## SWIRL SERVERS



Plastic exterior with foam insulation. Snap on decaf, tea, or coffee indicators. Specify color when ordering. **Handwash.**

Case Pack: 6 each. **Sold in case packs only.**

SSS20	.6 Liter (20 oz) server 6.5" x 4.75" x 8" (16.5 cm x 12.1 cm x 20.3 cm)
SSS42	1.2 Liter (40 oz) server 8" x 5.5" x 10" (20.3 cm x 14 cm x 25.4 cm)
SSS64	1.9 Liter (64 oz) server 8.75" x 6.5" x 11.25" (22.2 cm x 16.5 cm x 28.6 cm)

PARTS	SSSL20	Replacement lid for SSS20 (12 each)
	SSSL42	Replacement lid for SSS40 (12 each)
	SSSL64	Replacement lid for SSS64 (12 each)
	SSSFTVAR	Indicator tab - coffee, tea decaf



SSS20  
BL / BLACK  
.6L

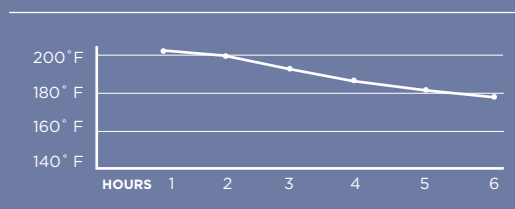
SSS42  
GM / GUN METAL  
1.2L

SSS42  
WH / WHITE  
1.2L

SSS64  
MO / MOCHA  
1.9L

# Stainless-Lined SERVERS

HEAT RETENTION CHART



ALL TESTS ARE DONE AT FULL CAPACITY.

**STAINLESS FACTS:** Stainless steel is an alloy that starts with basic iron with up to 8 alloys added, depending on the quality. The major alloys in stainless steel are chromium and nickel. The chromium provides rust, corrosion resistance and durability. Nickel provides additional rust resistance, strength, and high polishing characteristics.

The numbers:

18/0 indicates 18 percent chromium and 0 percent nickel.

18/8 indicates 18 percent chromium and 8 percent nickel.

18/10 indicates 18 percent chromium and 10 percent nickel.

The more percent of nickel, the higher the grade and the higher the costs. While 18/0 is not necessarily unsatisfactory, it is not considered corrosion resistant.



577  
CHROME  
1.5L



697  
CHROME  
1.5L

## ALFI® JUWEL TOP THERM SERVER



Brass with polished chrome finish exterior and stainless interior. Handmade and crafted in a traditional design with an unbreakable stainless liner and stopper lid. Optional glass liner, page 36. **Hand wash with Alfi brush, do not submerge.**

Case pack: 1 each.

**57715** 1.5 Liter (50.7 oz) server  
11.25" x 5.5" (28.6 cm x 14 cm)

Available by special order—call for pricing. (8 week lead time)

**5774** .4 Liter (13.5 oz) server

**5778** .8 Liter (27 oz) server

**PARTS** **571LID** Lid and hinge  
**572GAS** Liner gasket  
**STOPPER** Stopper for lid .8 Liter to 2.0 Liter  
**STOPPER2** Stopper for lid .32 Liter to .75 Liter  
**93** Alfi Brush



74704  
STAINLESS  
.4L



74707  
STAINLESS  
.7L



74710  
STAINLESS  
1L

## ALFI® OPAL TOP THERM SERVER



Brass with polished chrome finish exterior and stainless interior with vacuum insulation. Handmade and polished, crafted in traditional design with an unbreakable stainless liner and stopper lid. Optional glass liner, page 36. **Hand wash with Alfi brush, do not submerge.**

Case pack: 1 each.

**69715** 1.5 Liter (50.7 oz) server  
12" x 5.75" (30.5 cm x 14.6 cm)

Available by special order—call for pricing. (8 week lead time)

**6974** .4 Liter (13.5 oz) server

**6978** .8 Liter (27 oz) server

**PARTS** **571LID** Lid and hinge  
**572GAS** Liner gasket  
**STOPPER** Stopper for lid .8 Liter to 2.0 Liter  
**STOPPER2** Stopper for lid .32 Liter to .75 Liter  
**93** Alfi Brush

## ALFI® HOTEL DESIGN - NEW



Stainless exterior and interior with vacuum insulation. **Dishwasher safe.**

Case pack: 1 each.

**74704** .4 Liter (13.5 oz) stainless server  
3.75" x 7.5" x 7.25" (9.5 cm x 19.1 cm x 18.4 cm)

**74707** .7 Liter (24.5 oz) stainless server  
4" x 8" x 7.5" (9.5 cm x 19.1 cm x 18.4 cm)

**74710** 1 Liter (33.8 oz) stainless server  
3.75" x 7" x 7.5" (9.5 cm x 17.8 cm x 19.1 cm)



0547  
STAINLESS  
1L



0767000060  
CHROME  
.6L



0767000100  
CHROME  
1L



0767000150  
CHROME  
1.5L



0767000200  
CHROME  
2L

ALL 4 SIZES IN CHROME FINISH.



WJ7SS  
CH / POLISHED CHROME  
.7L



WJ10SS  
BS / BRUSHED STAINLESS  
1L



WJ7SS  
CP / COPPER  
.7L

BOTH SIZES AVAILABLE IN ALL FINISHES.

## WJ SERIES SERVERS - NEW



Stainless exterior with stainless interior and vacuum insulation. Elegant design at a value price. Specify finish when ordering. **Hand wash/do not submerge.**

Case pack: 6 each.

WJ7SS	.7 Liter (24 oz) brushed stainless server 5.5" x 6.5" x 9.75" (14.0 cm x 16.5 cm x 24.8 cm)
WJ10SS	1 Liter (33.8 oz) brushed stainless server 5.5" x 6.5" x 10.5" (14.0 cm x 16.5 cm x 26.7)

PARTS	WJLCP	Copper Lid
	WJLCH	Polished Chrome Lid

+ Innovation

ELEGANT DESIGN AT  
A VALUE PRICE.

## ALFI® NOBLE SERVER - NEW



Stainless exterior and interior with vacuum insulation. **Dishwasher safe.**

Case pack: 1 each.

0547000100	1 Liter (33.8 oz) stainless server 4" x 6" x 9" (10.2 cm x 15.2 cm x 22.9 cm)
------------	--

## ALFI® ALBERGO TOP THERM SERVERS



Stainless exterior with stainless interior and vacuum insulation. Features an unbreakable stainless liner with a push-button lid. Optional Glass liner, page 38. **Hand wash/do not submerge.**

Case pack: 1 each.

0767000060	.6 Liter (20 oz) server 7" x 5" (18.2 cm x 13 cm)
0767000100	1 Liter (33.8 oz) server 8.75" x 5" (22.3 cm x 13 cm)
0767000150	1.5 Liter (50.7 oz) server 9.5" x 5.25" (24 cm x 13.7 cm)
0767000200	2 Liter (67.6 oz) server 11" x 5.25" (28 cm x 13.7 cm)

PARTS	767LID	Lid
-------	--------	-----





55730  
STAINLESS  
.3L

55760  
STAINLESS  
.6L

55710  
STAINLESS  
1L

55715  
STAINLESS  
1.5L

ALL 4 SIZES IN POLISHED STAINLESS FINISH.

## ALFI® HOTELLO TOP THERM SERVER



Stainless steel exterior and interior with vacuum insulation. Features dishwasher safe vacuum, unbreakable liner and weighted lid. **Dishwasher safe.**

Case pack: 1 each.

<b>55730</b>	.3 Liter (10 oz) server 5.5" x 5" x 5.75" (14 cm x 12.7 cm x 14.6 cm)
<b>55760</b>	.6 Liter (20 oz) server 6.5" x 5" x 5.75" (16.5 cm x 12.7 cm x 14.6 cm)
<b>55710</b>	1 Liter (33.8 oz) server 8" x 5" x 6" (20.3 cm x 12.7 cm x 15.2 cm)
<b>55715</b>	1.5 Liter (50.7 oz) server 10.25" x 5" x 6" (25.7 cm x 12.7 cm x 15.2 cm)

### + Innovation

WEIGHTED LID PROVIDES STURDY  
PERFORMANCE AND FEEL.



98203  
STAINLESS  
.3L

98206  
STAINLESS  
.6L

98210  
STAINLESS  
1L

98215  
STAINLESS  
1.5L

ALL 4 SIZES IN POLISHED STAINLESS FINISH.

## 982 SERIES SERVER - NEW



Stainless steel exterior and interior with vacuum insulation. **Dishwasher safe. Do not disassemble the server or the lid.**

Case pack: 6 each.

<b>98203</b>	.3 Liter (10 oz) server 4" x 5.75" x 5.75"
<b>98206</b>	.6 Liter (20 oz) server 4.75" x 6" x 6.75"
<b>98210</b>	1 Liter (33.8 oz) server 5.25" x 6.25" x 7.5"
<b>98215</b>	1.5 Liter (50.7 oz) server 5.25" x 6.25" x 9.0"



WP3  
.3L

WP6  
.6L

WP1  
1L



WP15  
1.5L

WP20  
2L

SA / BRUSHED STAINLESS  
CH / POLISHED STAINLESS

ALL 5 SIZES AVAILABLE IN BOTH FINISHES.

## STAINLESS PITCHERS



Stainless steel exterior and interior with foam insulation. Features double-wall insulation that virtually eliminates condensation and helps prevent denting. Specify finish when ordering. **Hand wash/ do not submerge.**

Case pack: 1 each/master 12 (2 Liter 8 each).

<b>WP3</b>	.3 Liter (10 oz) pitcher 7" x 4.25" x 4.5" (17.8 cm x 10.5 cm x 11.4 cm)
<b>WP6</b>	.6 Liter (20 oz) pitcher 8.25" x 4.25" x 4.5" (21 cm x 10.8 cm x 11.4 cm)
<b>WP1</b>	1 Liter (33.8 oz) pitcher 8.5" x 4.5" x 5.25" (21.6 cm x 11.4 cm x 13.3 cm)
<b>WP15</b>	1.5 Liter (50.7 oz) pitcher 10.5" x 5" x 5.25" (26.7 cm x 12.7 cm x 13.3 cm)
<b>WP20</b>	2 Liter (67.6 oz) pitcher 11.25" x 5.5" x 6.5" (28.3 cm x 13.7 cm x 16.5 cm)



### PWL STEELVAC™ SERVERS



Lightweight stainless steel exterior and interior with superior vacuum insulation. Features a stylish design and take apart push-button lid. Lid with orange trigger for decaf may be substituted by adding "D". NSF approved. **Hand wash.**  
Case pack: 6 each.

PWLA061	.6 Liter (20 oz) server
	4.75" x 6" x 6.5" (12.1 cm x 15.2 cm x 16.5 cm)
PWLA121	1.2 Liter (40.6 oz) server
	4" x 5" x 7.75" (17.8 cm x 12.7 cm x 19.7 cm)
PWLA161	1.6 Liter (54 oz) server
	6.75" x 5" x 9.75" (17.8 cm x 12.7 cm x 24.8 cm)
PWLA201	2 Liter (67.6 oz) server
	6.75" x 5" x 11.75" (17.2 cm x 12.7 cm x 29.8 cm)
PARTS	
PWLBL	Push-button black lid for PWL (case pack 6)
PWLBLD	Push-button Decaf lid for PWL (case pack 6)



PWLA061 STAINLESS .6L  
PWLA121 STAINLESS 1.2L  
PWLA161 STAINLESS 1.6L  
PWLA201 STAINLESS 2L

ALL 4 SIZES AVAILABLE IN STAINLESS FINISH.



### FVP STEELVAC™ SERVERS



Stainless steel exterior and interior with vacuum insulation. Features an unbreakable liner, push-button lid, optional Brew N' Pour™ or decaf lid available. Lid with orange trigger for decaf may be substituted by adding "D" or "B" for Brew N Pour Lid after model number. **Hand wash/do not submerge.**  
Case pack: 6 each.

FVP12	1.2 Liter (40.6 oz) server
	8.5" x 5.5" (21.6 cm x 14.3 cm)
FVP15	1.5 Liter (50.7 oz) server
	9" x 5.5" (22.9 cm x 14.3 cm)
FVP20	2 Liter (67.6 oz) server
	10.75" x 5.5" (27.3 cm x 14.3 cm)
PARTS	
FVPL	Push-button black lid for FVP
FVPLOR	Push-button black lid with orange trigger for FVP
FVPBTL	Brew N' Pour™ black lid for FVP
FVPBTLOR	Brew N' Pour™ orange lid for FVP



FVP12 STAINLESS 1.2L  
FVP15 STAINLESS 1.5L  
FVP20 STAINLESS 2L

ALL 3 SIZES AVAILABLE IN STAINLESS FINISH.



SJ10SS  
STAINLESS  
1L

## SJ STEELVAC™ SERVERS



Stainless steel exterior and interior with vacuum insulation. Features an unbreakable liner, push-button or Brew N' Pour lid. Lid with orange trigger for decaf may be substituted by adding "D" or "B" for Brew N Pour Lid. **Hand wash/do not submerge.**

Case pack: 6 each.

<b>SJ60SS</b>	.6 Liter (20 oz) server 7.5" x 4.25" x 6.25" (19.1 cm x 10.5 cm x 15.9 cm)
<b>SJ10SS</b>	1 Liter (33.8 oz) server 10.5" x 3.5" x 6" (26.7 cm x 8.9 cm x 15.2 cm)
<b>SJ20SS</b>	2 Liter (67.6 oz) server 12.25" x 4.75" x 7.75" (31.1 cm x 12.1 cm x 19.2 cm)
<b>PARTS</b>	<b>SJL</b> SteelVac™ black lid for SJ (case pack 6) <b>SJLOR</b> SteelVac™ decaf lid for SJ (case pack 6) <b>SJBTL</b> SteelVac™ Brew N' Pour™ lid for SJ (case pack 6) <b>SJBTLOR</b> SteelVac™ Brew N' Pour™ decaf lid for SJ (case pack 6)



SJ60SS  
STAINLESS  
.6L

SJ10SS  
STAINLESS  
1L

SJB20SS  
STAINLESS  
2L

BREW THRU LID  
"B"

ALL 3 SIZES AVAILABLE IN STAINLESS FINISH.

BNP19  
STAINLESS W/ BLACK  
1.9L



## BREW N' POUR™ STEELVAC™ SERVER



Stainless steel exterior and interior with vacuum insulation. Interchangeable Brew N' Pour™ decaf lid option. Insulation saves electricity. Lid for decaf may be substituted by adding "OR" after model number. **Hand wash/do not submerge.**

Case pack: 6 each.

<b>BNP19</b>	1.9 Liter (64.2 oz) server 6.5" x 7" x 9" (15.9 cm x 17.8 cm x 22.9 cm)
--------------	--

<b>PARTS</b>	<b>BNPL</b> Black lid (case pack 6)
	<b>BNPLOR</b> Orange lid (case pack 6)

**Application Suggestions** Unplug the heat plate of the coffee maker and use the following formula to figure out how much it will save you: 1) Check the wattage of the machine. Ex. 200. 2) Multiply wattage by the number of hours your appliance is in use. Ex. 200 x 16hrs/day = 3,200. 3) Divide by 1000 to get Kilowatt hours. Ex. 3,200 / 1,000 = 3.2 KWH. 4) Check your local Kilowatt hourly rate. Ex. Clark County (Las Vegas), is 5.73 cents per KWH. Multiply your KWH by the local rate. 3.2 KWH x .0573 = .18 cents/day. So you save \$65/year, per warmer, which pays for the server.

### DON'T FORGET YOUR CLEANER!

Keep your product looking great.



12632  
PAGE 55



SW70  
WHITE  
.7L



SB100  
BLACK  
1L



SS100  
STAINLESS  
1L



SS100  
WITH A CREST  
(1 LITER ONLY)



S2S100  
STAINLESS  
1L



S2S100  
WITH A CREST

AVAILABLE IN 3 FINISHES.

## S/S2 STEELVAC™ CARAFES



Stainless steel or plastic exterior with stainless interior and vacuum insulation. Features an unbreakable liner, slender style with or without pedestal base and a twist lid. Lid for decaf may be substituted by adding "D" after model number. **Hand wash/do not submerge.**

Case pack: 6 each.

### WITH BASE

<b>SB70</b>	.7 Liter (24 oz) black carafe 9.25" x 4.25" (23.5 cm x 10.8 cm)
<b>SB100</b>	1 Liter (33.8 oz) black carafe 11.5" x 4.25" (29.2 cm x 10.8 cm)
<b>SS70</b>	.7 Liter (24 oz) stainless carafe 9.25" x 4.25" (23.5 cm x 10.8 cm)
<b>SS100</b>	1 Liter (33.8 oz) stainless carafe 11.5" x 4.25" (29.2 cm x 10.8 cm)
<b>SS100xxx</b>	1 Liter (33.8 oz) stainless carafe specify 2%, half & half, skim, whole milk 11.5" x 4.25" (29.2 cm x 10.8 cm)
<b>SW70</b>	.7 Liter (24 oz) white carafe 9.25" x 4.25" (23.5 cm x 10.8 cm)
<b>SW100</b>	1 Liter (33.8 oz) white carafe 11.5" x 4.25" (29.2 cm x 10.8 cm)

### WITHOUT BASE

<b>S2S70</b>	.7 Liter (24 oz) stainless carafe 9" x 3.5" (22.9 cm x 8.9 cm)
<b>S2S70xxx</b>	.7 Liter (24 oz) stainless carafe specify half & half, skim 9" x 3.5" (22.9 cm x 8.9 cm)
<b>S2S100</b>	1 Liter (33.8 oz) stainless carafe 11.5" x 3.5" (29.2 cm x 8.9 cm)
<b>S2S100xxx</b>	1 Liter (33.8 oz) stainless carafe specify 2%, half & half, skim, whole milk 11.5" x 3.5" (29.2 cm x 8.9 cm)

<b>PARTS</b>	<b>SSLID</b>	SteelVac™ black lid for S, S2 (case pack 6)
	<b>SSLIDOR</b>	SteelVac™ orange lid for S, S2 (case pack 6)



CGCS060  
SS / BRUSHED  
STAINLESS W/ BLACK



CGCS101  
CP / COPPER  
W/ BROWN

BOTH SIZES AVAILABLE IN BOTH FINISHES.



FB  
FLAVORBANDS

## CLASSIC STAINLESS CARAFES™



Durable metal exterior with stainless vacuum insulation. Features a virtually dripless spout with 1/8" turn stopper top, tilt to pour. Specify color when ordering. Lid for decaf may be substituted by adding "D" after model number. Optional glass liner page 39.

**Hand wash/do not submerge.**

Case pack: 6 each.

<b>CGCS060</b>	.6 Liter (20 oz) carafe 5" x 6.5" x 8.75" (12.7 cm x 16.5 cm x 22.2 cm)
<b>CGCS10</b>	1 Liter (33.8 oz) carafe 4.5" x 6.25" x 10" (11.4 cm x 15.8 cm x 25.4 cm)

<b>PARTS</b>	<b>CGRL6SS</b>	.6 Liter stainless liner
	<b>CGRL1SS</b>	1 Liter stainless liner
	<b>CGSTOP1</b>	Black stopper lid (case pack 6)
	<b>CGSTOP2</b>	Brown stopper lid (case pack 6)
	<b>CGSTOPOR</b>	Orange stopper lid (case pack 6)

## FLAVORBANDS

Rubber band identifiers are recommended for 4" or smaller diameter servers, models: Sx, S2S & SJ on page 31 & 32.

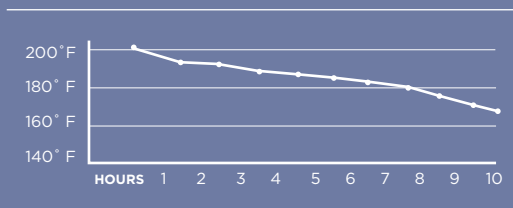
Case pack: Sold in pack of 6 only. Variety pack 1 of each flavor.

<b>FBVARIETY</b>	Flavorband variety (7 pack)
<b>FBCREAM</b>	Flavorband cream (6 pack)
<b>FBDECAF</b>	Flavorband decaf (6 pack)
<b>FBHALF&amp;HALF</b>	Flavorband half & half (6 pack)
<b>FBHOTWATER</b>	Flavorband hot water (6 pack)
<b>FBREGULAR</b>	Flavorband regular (6 pack)
<b>FBSKIM</b>	Flavorband skim (6 pack)
<b>FBTEA</b>	Flavorband tea (6 pack)
<b>FBCOLDVAR</b>	Flavorband cold variety pack (2 each of skim, half & half, cream)

Custom printing available. 500 minimum.  
\$75 net set-up charge.

# Glass-Lined SERVERS

HEAT RETENTION CHART



ALL TESTS ARE DONE AT FULL CAPACITY.

- Hard glass vacuum liner with silver lacquering provides 8+ hours of retention
- Variety of body styles house liner
- Liners are replaceable for longer life of server
- Handwashing recommended for vacuum carafes

115  
E / BLACK115  
KC / COBALT BLUE115  
PA / WHITE115  
PP / ANTHRACITE  
GRAY115  
SV / SILVER0175 052 094  
COBALT BLUE0175 970 094  
COGNAC0175 033 094  
LAVA RED0175 971 094  
ORANGE0175 010 094  
TRANSPARENT

## ALFI® KUGEL BALL SERVERS



Polypropylene or acrylic exterior with glass interior and vacuum insulation. Available with a twist lid. Specify color when ordering. **Hand wash/do not submerge.**

Case pack: 1 each.

### TWIST LID

115 .9 Liter (30.4 oz) server  
8" x 5" (20.3 cm x 12.7 cm)

PARTS 105L Glass liner  
FBL Lid for 115

### TRANSPARENT

0175 .9 Liter (30.4 oz) server  
8" x 5" (20.3 cm x 12.7 cm)

PARTS 105L Glass liner  
FBSL Lid for 0175

## ALFI® BASIC MODERN SERVERS



Acrylic exterior with glass interior and vacuum insulation. Features a twist-top lid. Specify color when ordering. **Hand wash/ do not submerge.**

Case pack: 1 each.

**865** .9 Liter (30.4 oz) server  
8" x 6" (20.3 cm x 15.2 cm)

**PARTS** **865L** Glass liner  
**BL** Basic modern lid



865  
010 / TRANSPARENT  
.9L



865  
PB / LAVA RED  
.9L



865  
PC / AZURE BLUE  
.9L



865  
PP / ANTHRACITE  
.9L

## ALFI® TOSCANA SERVERS



Acrylic exterior with glass interior and vacuum insulation. Features a twist-top lid. Specify color when ordering. **Hand wash/ do not submerge.**

Case pack: 1 each.

**0915** 1 Liter (33.8 oz) server  
8" x 6" (20.3 cm x 15.2 cm)

**PARTS** **0915999100** Glass liner  
**9103020059** Black push button lid



0915020100  
BLACK  
1L

## ALFI® NOMOS SERVERS



Plastic exterior with a glass liner. Features a screw top lid. **Hand wash/do not submerge.**

Case pack: 1 each.

**1265XXX100** 1 Liter (33.8 oz) server  
6.7" x 4.1" x 12.4" (17 cm x 10.5 cm x 31.5 cm)

**PARTS** **0125999100** Replacement glass liner  
**9103020056** Replacement black lid



1265010100  
010 / WHITE  
1.0L



1265020100  
020 / BLACK  
1.0L



1265030100  
030 / RED  
1.0L



1265050100  
050 / BLUE  
1.0L



HANDY.6  
BL / BLACK  
.6L



HANDY1  
WH / WHITE  
1L

BOTH SIZES AVAILABLE IN BOTH COLORS.

## ALFI® HANDY SERVERS



Polypropylene exterior with glass interior. Features Take A-Part lid. Stackable. Specify color when ordering. **Hand wash/do not submerge.**

Case pack: 1 each.

<b>HANDY.6</b>	.6 Liter (20 oz) server 8.75" x 4.75" (22.2 cm x 12 cm)
<b>HANDY1</b>	1 Liter (33.8 oz) server 9.75" x 5.25" (24.8 cm x 13.3 cm)

<b>PARTS</b>	<b>145G</b>	6 Liter glass liner
	<b>57G</b>	1 Liter glass liner
	<b>9352A</b>	White lid for handy1 & 6
	<b>9352E</b>	Black lid for handy1 & 6
	<b>9404</b>	Lid gasket



1915010  
WHITE

.6L, 1L & 1.5L AVAILABLE.

## ALFI® NEAT SERVERS



Plastic exterior with glass interior and vacuum insulation. Screw top. **Dishwasher safe.**

Case pack: 1 each.

<b>1915010060</b>	.6 Liter (20 oz) server 6.5" x 5.5" x 9.25" (16.5 cm x 14 cm x 23.5 cm)
<b>1915010100</b>	1 Liter (33.8 oz) server 6.5" x 9.5" (16.5 cm x 24 cm)
<b>1915010150</b>	1.5 Liter (50.7 oz) server 6.5" x 10.25" (16.5 cm x 26 cm)

<b>PARTS</b>	<b>9103010065</b>	Replacement lid
--------------	-------------------	-----------------



0925037100  
037 / RED  
1L



0925073100  
073 / LIME  
1L



0925096100  
096 / YELLOW  
1L



0925109100  
109 / ORANGE  
1L

## ALFI® DIANA SERVERS



Plastic exterior with glass interior and vacuum insulation. Features a push-button lid. Specify color when ordering. No replacement parts available. **Hand wash/do not submerge.**

Case pack: 1 each.

<b>0925xxx100</b>	1 Liter (33.8 oz) server 6.75" x 6" x 9.25" (17.2 cm x 14 cm x 23.5 cm)
-------------------	--



1852 / CHROME  
.65L, 1L AVAILABLE

SPECIAL ORDER: 18541 / SILVER



572  
CHROME  
.5L, 1L, 1.5L AVAILABLE

SPECIAL ORDER: 5741 / SILVER



692 / CHROME  
.65L, 1L, 1.5L, 2L AVAILABLE

SPECIAL ORDER: 6941 / SILVER

## ALFI® SAPHIR PREMIUM GLASS SERVER



Brass with polished chrome finish exterior, glass interior and vacuum insulation. Handcrafted in traditional design. Features a stopper lid. **Hand wash with Alfi brush, do not submerge.**

Case pack: 1 each.

185265 .65 Liter (22 oz) chrome server  
8.75" x 3.75" (22.2 cm x 9.5 cm)

18521 1 Liter (33.8 oz) chrome server  
10" x 4.25" (25.4 cm x 10.5 cm)

Available by special order—call for pricing. (8 week lead time):

18541 1 Liter (33.8 oz) silver server  
10" x 4.25" (25.4 cm x 10.5 cm)

PARTS	185L65	.65 Liter glass liner
	185L1	1 Liter saphir/achat glass liner
	571LID	Chrome lid and hinge
	57LGAS	Liner gasket
	93	Alfi Brush

## ALFI® JUWEL PREMIUM GLASS SERVER



Brass with polished chrome finish exterior with glass interior. Handmade and polished, crafted in traditional design with a stopper lid. Optional stainless liner page 27. **Hand wash with Alfi brush, do not submerge.**

Case pack: 1 each.

5725 .5 Liter (16.9 oz) chrome server  
7.25" x 3.5" (18.4 cm x 8.9 cm)

57210 1 Liter (33.8 oz) chrome server  
9" x 4" (22.8 cm x 10.2 cm)

57215 1.5 Liter (50.7 oz) chrome server  
11.25" x 5.5" (28.5 cm x 14 cm)

Available by special order—call for pricing. (8 week lead time):

5741 1 Liter (33.8 oz) silver server  
9" x 4" (22.8 cm x 10.2 cm)

PARTS	57L5	.5 Liter liner
	57L1	1 Liter liner
	57L15	1.5 Liter liner
	571LID	Chrome lid and hinge
	57LGAS	Liner gasket
	STOPPER	.8 Liter - 2 Liter stopper
	STOPPER2	.35 Liter - .75 Liter stopper
	93	Alfi Brush

## ALFI® OPAL PREMIUM GLASS SERVER



Brass with polished chrome finish exterior, glass interior and vacuum insulation. Handmade and polished, crafted in traditional design. Features a stopper lid. Optional stainless liner page 27. **Hand wash with Alfi brush, do not submerge.**

Case pack: 1 each.

69265 .65 Liter (22 oz) chrome server  
8.25" x 4.5" (20.6 cm x 11.4 cm)

6921 1 Liter (33.8 oz) chrome server  
9" x 5.25" (22.8 cm x 13 cm)

69215 1.5 Liter (50.7 oz) chrome server  
10.5" x 5.75" (26.6 cm x 14.6 cm)

6922 2 Liter (67.6 oz) chrome server  
12" x 5.75" (30.4 cm x 14.6 cm)

Available by special order—call for pricing. (8 week lead time):

6941 1 Liter (33.8 oz) silver server  
9" x 5.25" (22.8 cm x 13 cm)

PARTS	57L65	.65 Liter liner
	57L1	1 Liter liner
	57L15	1.5 Liter liner
	57L2	2 Liter liner
	571LID	Chrome lid and hinge
	57LGAS	Liner gasket
	93	Alfi Brush



## Why Alfi? TO BRING TASTE TO YOUR TABLE.

### HOT LOOKS

Award-winning designers like Ole Palsby and Tassilo von Grolman partner with Alfi to create servers that make a statement. The Alfi brand is known worldwide as the ultimate in chic.

### HOT DRINKS

Years of research on heat flow, heat conduction, and heat radiation give Alfi unmatched performance. Vacuum-insulated, double-walled Alfi Dur-Hard glass with silver lacquering ensures that virtually no heat can escape.

### COOL OPTIONS

Alfi provides a range of servers to fit any budget and application, including those with double-walled, vacuum-pumped, stainless steel inserts, which perform nearly as well as glass—and won't break.

## CUSTOM ENGRAVING & REPAIR

Increase awareness and reinforce your brand with Custom Engraving. We engrave right on carafes, turning them into personalized statements. Lead time with camera ready artwork is four to eight weeks.

**\$2.00** list per letter, logos to be quoted; 12 each minimum.

Repair services available.

Call for estimates. Alfi carafes with minimal damage may be refurbished.

**\$20.00** per hour charge plus parts at standard discount.



ALL 3 SIZES AVAILABLE IN POLISHED FINISH.

## ALFI® ALBERGO GLASS SERVER



Stainless exterior with glass interior. Features a push-button lid. Special order .65 and 1.5 Liter. Optional stainless steel liner, page 28.

**Hand wash/do not submerge.**

Case pack: 1 each.

144265	.65 Liter (22 oz) server 8.5" x 5.5" x 7" (21.6 cm x 14 cm x 17.8 cm)
14421	1 Liter (33.8 oz) server 10.25" x 5.75" x 7.75" (26 cm x 14.6 cm x 19.7 cm)
144215	1.5 Liter (50.7 oz) server 11.5" x 5.75" x 8" (29.2 cm x 14.6 cm x 20.3 cm)

PARTS	1442999070	65 Liter glass liner
	14321L	1 Liter glass liner
	1442999150	1.5 Liter glass liner
	1432LID	1 Liter lid with tea infuser
	93	Alfi Brush



2 SIZES AVAILABLE, ALL 4 FINISHES AVAILABLE IN 1 LITER ONLY.

## CLASSY™ VACUUM SERVERS



Stainless exterior with glass interior and vacuum insulation. Features a push button lid. Specify color when ordering. Lid with orange trigger for decaf may be substituted by adding "D" after model number. **Hand wash/do not submerge.**

Case pack: 6 each.

CJ6	.6 Liter (20 oz) server 5" x 6.75" x 9" (12.7 cm x 17.1 cm x 22.8 cm)
CJ10	1 Liter (33.8 oz) server 5.5" x 6.75" x 11" (13.9 cm x 17.1 cm x 27.9 cm)

PARTS	CJRL6	.6 Liter glass liner for CJ6
	CJRL1	1 Liter glass liner for CJ10
	CJRL1BL	Black lid for CJ10, 6 (case pack 6)
	CJRL1BLD	Black decaf lid for CJ10, 6 (case pack 6)
	CJRL1CH	Mirrored finish lid for CJ10, 6CH (case pack 6)
	CJRL1CHD	Mirrored finish decaf lid for CJ10, 6CH (case pack 6)
	CJL1WHG	White lid for CJ10 (case pack 6)
	93	Alfi Brush



TPS10  
STAINLESS W/  
BLACK  
1L

TPS16  
STAINLESS W/  
BLACK  
1.6L

TPS19  
STAINLESS W/  
BLACK  
1.9L

## PUSH N' SERV™ SERVERS



Stainless exterior with glass interior and vacuum insulation. Features an ergonomically friendly design with push button on handle. Lid with orange inset for decaf may be substituted by adding "D" after model number. **Hand wash/do not submerge.**

Case pack: 6 each.

TPS10	1 Liter (33.8 oz) server 10" x 5.75" x 7.5" (25.4 cm x 14.6 cm x 19.1 cm)
TPS16	1.6 Liter (54 oz) server 12.25" x 5.75" x 7.5" (31.1 cm x 14.6 cm x 19.1 cm)
TPS19	1.9 Liter (64.2 oz) server 13.25" x 6" x 7.5" (33.7 cm x 15.2 cm x 19.1 cm)

PARTS	DX10	1 Liter glass liner for TPS10
	DX16	1.6 Liter glass liner for TPS16
	DX19	1.9 Liter glass liner for TPS19
	TPSGAS	Liner gasket for TPS19
	TPSLID	Black lid for TPS10, 16, 19 (case pack 6)
	TPSLIDOR	Decaf lid for TPS10, 16, 19 (case pack 6)

### + Innovation

ERGONOMICAL PUSH  
BUTTON HANDLE.



PXS19C  
1.9L



PXS19BTL  
BRUSHED STAINLESS  
W/ BLACK  
1.9L

## ULTRA CARAFE



Stainless exterior with glass interior and vacuum insulation. Features Click N' Pour or Brew N' Pour™ dishwasher safe lids. Since it fits under most "airpot" brewers feel free to brew directly into it. Lid for decaf may be substituted by adding "D" after model number. **Hand wash/do not submerge.**

Case pack: 6 each.

PXS19C	1.9 Liter (64.2 oz) with Click N' Pour lid server 12.75" x 6.25" x 7.75" (32.6 cm x 15.4 cm x 19.6 cm)
PXS19BTL	1.9 Liter (64.2 oz) with Brew N' Pour lid server 12.75" x 6.25" x 7.75" (32.6 cm x 15.4 cm x 19.6 cm)

PARTS	DX19	1.9 Liter glass liner for PXS19
	PXSL	Black click n' pour lid for pxs19
	PXSLOR	Orange lid for PXS19 (case pack 6)
	PXSBTL	Black Brew N' Pour lid for PXS19BTL (case pack 6)
	PXSBTLOR	Orange Brew N' Pour lid for PXS19BTL (case pack 6)

## CLASSIC GLASS CARAFE™



Durable metal exterior with glass interior. Features a virtually dripless spout with 1/8" turn stopper top, tilt to pour. Optional stainless liner page 32. Specify color when ordering. Lid for decaf may be substituted by adding "D" after model number. **Hand wash/do not submerge.**

Case pack: 6 each.

CGC060	.6 Liter (20 oz) carafe 9.75" x 5" x 6.5" (22.2 cm x 12.7 cm x 16.5 cm)
CGC101	1 Liter (33.8 oz) carafe 10" x 4.5" x 6.25" (25.4 cm x 11.4 cm x 15.8 cm)

PARTS	CGRL6	.6 Liter glass liner
	CGRL1	1 Liter glass liner
	CGSTOP1	Black stopper lid (case pack 6)
	CGSTOP2	Brown stopper lid (case pack 6)
	CGSTOPOR	Orange stopper lid (case pack 6)

CGC060  
SS / BRUSHED  
STAINLESS W/ BLACK  
.6L



CGC101  
CP / COPPER  
W/ BROWN  
1L

BOTH SIZES AVAILABLE IN BOTH FINISHES.

# Specialty SERVERS

If you're going to make an impression, make it incredible. And if you're going to make coffee, why not make it French press? We've got everything you need to leave a lasting impression on any guest—whether you want hand-pressed coffee, loose-leaf tea, or perfectly chilled iced drinks. Add an extra shot of sophistication and flavor to any affair with just the right server.



T277B  
STAINLESS  
.35L



T477B  
STAINLESS  
.6L



T677B  
STAINLESS  
.8L



T877B  
STAINLESS  
1L

ALL 4 SIZES AVAILABLE IN STAINLESS FINISH.

## SERVICE IDEAS BRICK PRESSES

Constructed from stainless with a Pyrex glass liner. Features a brick pattern. **Hand wash.**

Case pack: 1 each.

<b>T277B</b>	.35 Liter (11.8 oz) chrome press makes 3 (4 oz) cups. 4.6" x 3.6" x 8" (11.7 cm x 9.1 cm x 20.3 cm)
<b>T477B</b>	.6 Liter (20 oz) chrome press makes 5 (4 oz) cups. 5.8" x 4.4" x 8.5" (14.7 cm x 11.2 cm x 21.6 cm)
<b>T677B</b>	.8 Liter (27.1 oz) chrome press makes 6 (4 oz) cups. 6" x 4.8" x 9" (15.2 cm x 12.2 cm x 22.9 cm)
<b>T877B</b>	1 Liter (33.8 oz) chrome press makes 8 (4 oz) cups. 6" x 4.8" x 9.8" (15.2 cm x 12.2 cm x 24.9 cm)

<b>PARTS</b>	<b>L3</b> Glass liner 277 5" x 2.75" (12.5 cm x 6.9 cm)
	<b>L4</b> Glass liner 477 6" x 3.5" (15 cm x 8.8 cm)
	<b>L6</b> Glass liner 677 6" x 3.75" (15 cm x 9.4 cm)
	<b>L8</b> Glass liner 877 7" x 3.75" (17.8 cm x 9.4 cm)

## HOW TO USE A FRENCH PRESS

1. Warm glass bowl beforehand and fill with appropriate amount of medium ground coffee or tea. Depending on preferred strength, use 2-3 tsp., for 6 oz of water.
2. For best results pour water which has just come to a boil, place lid on and let steep.
3. After grounds or tea leaves settle towards bottom (approximately 3-5 minutes), push filter down, pour.



2120 050 040  
STAINLESS  
.5L



2120 120 040  
STAINLESS  
1.2L



2109060040  
STAINLESS  
.6 L



2109 140 040  
STAINLESS  
1.4L  
(SPECIAL ORDER)

### ALFI® COFFEE MAKER

Made from 18/10 stainless steel with double-wall insulation. Features a traditional press system. **Hand wash.**

Case pack: 1 each.

<b>2120 050 040</b>	.5 Liter (16 oz) coffee maker 7.75" x 3" x 5.5" (19.7 cm x 7.6 cm x 14 cm)
<b>2120 120 040</b>	1.2 Liter (40.6 oz) coffee maker 9.5" x 4" x 6.75" (24.1 cm x 10.2 cm x 17.1 cm)

### ALFI® TEEKANNE TEA POT

Constructed from 18/10 stainless steel. Features a removable stainless steel tea filter. **Hand wash.**

Case pack: 1 each.

<b>2109060040</b>	.6 Liter (20 oz) tea pot 3.5" x 5.5" (9 cm x 14 cm)
<b>2109 140 040</b>	1.4 Liter (47.3 oz) tea pot 7.5" x 4.75" x 7.75" (19.1 cm x 12.1 cm x 19.7 cm)



S4012350



S4012800



S40121000

### STAINLESS PRESS - NEW

Made from 202 stainless steel with double-wall insulation. Features a traditional press system. **Hand wash.**

Case pack: 1 each/master 12.

<b>S4012350</b>	.35 Liter (11.8 oz) stainless press 4" X 4.75" X 6.5" (10.2 cm x 12.1 cm x 16.5 cm)
<b>S4012800</b>	.8 Liter (27 oz) stainless press 4.75" X 5.5" X 7.75" (12.1 cm x 14 cm x 19.7 cm)
<b>S40121000</b>	1 Liter (33.8 oz) stainless press 5.5" X 6" X 8.5" (14 cm x 15.2 cm x 21.6 cm)



T600CC  
CHROME  
.6L



T600CCG  
GOLD  
.6L

### SERVICE IDEAS TEA POT

Metal holder with glass interior. Make tea to order. **Liners dishwasher safe.**

Case pack: 1 each.

<b>T600CC</b>	.6 Liter (20 oz) chrome tea pot 6.5" x 5.5" x 6.5" (17.5 cm x 14 cm x 16.5 cm)
<b>T600CCG</b>	.6 Liter (20 oz) gold tea pot 6.5" x 5.5" x 6.5" (17.5 cm x 14 cm x 16.5 cm)

<b>PARTS</b>	<b>TL4</b> Glass liner T600 4" x 4" (10.2 cm x 10.2 cm)
--------------	--

## Work Together

ALFI COOL BOTTLE +  
ALFI KUGEL (P.33)



1135033075  
033 / CHERRY RED  
.75L



1135971075  
971 / ORANGE  
.75L



1135970075  
970 / ICE TEA  
.75L



1135010075  
010 / MILKY WHITE  
.75L

## ICE TUBE PITCHER

Constructed from clear acrylic or polycarbonate. The ice tube allows you to chill without diluting liquids. Great for juice.

**Handwash only with soft sponge and non-abrasive cleaner.**

Case pack: 6 each.

### ACRYLIC

AWP19SB	1.9 Liter (64.2 oz) smooth body pitcher 10.5" x 6" x 7.5" (26.7 cm x 15.2 cm x 19.1 cm)
AWP24BS	2.4 Liter (81.1 oz) bell shape pitcher 11.25" x 4" x 8" (28.5 cm x 10 cm x 20 cm)
AWP33SB	3.3 Liter (111.5 oz) smooth body pitcher 11.75" x 4" x 7.5" (30 cm x 10 cm x 19 cm)
AWP33RB	3.3 Liter (111.5 oz) ribbed body pitcher 11.5" x 4" x 8" (29 cm x 10 cm x 20 cm)

### POLYCARBONATE

PWP19SB	1.9 Liter (64.2 oz) smooth body pitcher 10.5" x 6" x 7.5" (26.7 cm x 15.2 cm x 19.1 cm)
PWP28BS	2.8 Liter (94.7 oz) bell shape pitcher 11.25" x 4" x 8" (28.5 cm x 10 cm x 20 cm)
PWP33SB	3.3 Liter (111.5 oz) smooth body pitcher 11.75" x 4" x 7.5" (30 cm x 10 cm x 19 cm)

PARTS	AWPLI	Lid/cover for AWP/PWP (2.4 L, 2.8 L, 3.3 L) (case pack 6)
	AWPLI19	Lid/cover for AWP/PWP (1.9 L) (case pack 6)
	AWPICE	Ice tube for AWP/PWP (case pack 6)



SI2LITCL  
CLEAR  
2L

## ALFI® COOL BOTTLE

Cool design for cold drinks. Features the unique Inside Out-Look to view content level. An extra large all-round pouring opening and fresh colors to designate drinks. **Hand wash.**

Case pack: 1 each.

1135XXX075	.75 Liter (25.5 oz) cool bottle 4.5" x 11" (11.4 cm x 27.9 cm)
------------	---

PARTS	1135999075	Liner for cool bottle
	FBSL	Lid for cool bottle

## + Innovation

SEE THROUGH GLASS VACUUM.



AWP19SB  
CLEAR  
1.9L



AWP24BS  
CLEAR  
2.4L



AWP33RB  
CLEAR  
3.3L



AWP33SB  
CLEAR  
3.3L



PWP19SB  
CLEAR  
1.9L



PWP28BS  
CLEAR  
2.8L



PWP33SB  
CLEAR  
3.3L

3 SIZES AVAILABLE IN BOTH MATERIALS.

## SCULPTURED ICE™ PITCHER



Constructed from S.A.N. plastic. Lid available, stackable.

**Dishwasher safe.**

Case pack: 6 each.

SI2LITCL	2 Liter (67.6 oz) clear pitcher with lid 8.25" x 4.5" (21 cm x 11.4 cm)
----------	--

PARTS	SI2LITCOC	Lid for SI2LITCL
-------	-----------	------------------

## IDENTIFICATION MAGNETS



### PLAIN STYLE



Magnetic identification labels available in packs of 6 each. Your choice of plain in over 23 flavors or in a variety pack that includes 1 of each flavor. Flavors: Milk, 2% Milk, Skim Milk, Half & Half, Cream, Hot Water, Tea, Ice Tea, Coffee, Decaf, Regular, Breakfast Blend, Colombian, French Roast, Gourmet Blend, House Blend, Almond, Amaretto, French Vanilla, Hazelnut, Irish Cream, Mocha, Blank. **Specify flavor when ordering.**

Sold in Case Pack of 6 only. Variety Pack 1 of each flavor.

MT1XX	Plain individual tags order as 6 each (3.5" x 1.25")
MT1VPA	Variety pack 1 each of 23 (3.5" x 1.25")

### COFFEE BEAN STYLE



2 sizes of coffee bean style available in Colombian, Decaf, House Blend, French Roast. **Specify flavor when ordering.**



Sold in Case Pack of 6 only. Variety Pack 1 of each flavor.

MTCB1XX	Coffee bean style tag (3" x 1")
MTCB4XX	Coffee bean style tag (6" x 4")

## IDENTIFICATION LABELS



Static cling. Clean, easy way to identify contents. **Wipe with damp cloth.**

Case pack: 1 sheet/20 labels.

SC1VPA	Variety sheet: milk, 2% (2 each), skim milk, cream, hot water, coffee, decaf, regular, breakfast blend, colombian, french roast, gourmet blend, house blend, almond, amaretto, french vanilla, hazelnut, irish cream, mocha
SC1CA	Cold sheet: cream, milk, half & half, 2% (5 each of 4=20)
SC1HA	Hot sheet: hot water, regular, decaf, house (5 each of 4=20)



IDCHHW  
HOT WATER



IDCHCF  
COFFEE



### CUSTOM CRESTING

Available with camera ready art. Increase awareness and reinforce your brand with Service Ideas' Custom Cresting program. We print your logo right on plastic servers, turning them into advertisements themselves. Lead time with camera ready artwork is four weeks.

**\$7.00** LIST PER COLOR, PER HIT; 36 MINIMUM.

## IDENTIFICATION CHAINS

Constructed out of metal. Adjustable chain. **Wipe with a damp cloth.**

Case pack: 1 each.

IDCH	Identification chain (Specify CF for Coffee, DE for Decaf, HW for Hot water. Specify VAR for 1 of each noted above.) 1.5" x 3.5" (3.8 cm x 8.9 cm), Chain 25" (63.5 cm)
------	--

HOLDS THERMOMETER  
60721



FROTH206  
STAINLESS  
.6L

FROTH326  
STAINLESS  
1L

FROTH506  
STAINLESS  
1.5L

FROTH646  
STAINLESS  
1.9L

4 SIZES AVAILABLE IN STAINLESS FINISH.

## FROTHING PITCHERS



Stainless steel construction. Features an opening to hold thermometer and internal content level lines in 6 ounce increments. Thermometer sold separately. **Dishwasher safe.**

Case pack: 1 each.

<b>FROTH206</b>	.6 Liter (20 oz) pitcher 4.25" x 3.5" (10.5 cm x 8.9 cm)
<b>FROTH326</b>	.95 Liter (32 oz) pitcher 5" x 4" (12.7 cm x 10.2 cm)
<b>FROTH506</b>	1.5 Liter (50 oz) pitcher 6" x 4.25" (15.2 cm x 10.8 cm)
<b>FROTH646</b>	1.9 Liter (64 oz) pitcher 6.75" x 4.5" (17.1 cm x 11.4 cm)

<b>PARTS</b>	<b>60721</b>	5" stem thermometer
--------------	--------------	---------------------

### + Innovation

HOLE IN THE HANDLE  
FOR THE THERMOMETER.



WPS2  
STAINLESS  
2L

## WATER PITCHER

Constructed from stainless steel. Features a traditional shape with ice guard. **Hand wash.**

Case pack: 1 each/master 6.

<b>WPS2</b>	2 Liter (67.6 oz) pitcher 6" x 7.75" x 7.5" (15 cm x 19.5 cm x 19 cm)
-------------	--



X7025  
STAINLESS  
1.9L

## STAINLESS PITCHER



Constructed from stainless steel. Features a sleek look with chrome finish and ice guard. **Dishwasher safe.**

Case pack: 1 each/master 12.

<b>X7025</b>	1.9 Liter (64 oz) pitcher 10" x 4" (25.4 cm x 10.2 cm)
--------------	---



PCB18  
BLACK  
1.8L

## DECANTER



Polycarbonate plastic body with a stainless base. Features a removable decaf rubber grip on the handle. Empty decanter must be immediately removed from heat source. **Dishwasher safe.**

Case pack: 12 each

<b>PCB18</b>	1.8 Liter (60 oz) decanter 6.75" x 6.5" x 8" (17.1 cm x 16.5 cm x 20.3 cm)
--------------	---

<b>PARTS</b>	<b>DSOR18</b>	Decanter sleeve orange
--------------	---------------	------------------------

### + Innovation

REMOVABLE DECAF INDICATOR.

## ICE BUCKET



Constructed from ABS plastic with double-wall insulation. Double-wall virtually eliminates condensation. Custom colors available. Minimum order quantity for custom color is 600 pieces. **Dishwasher safe.**

Case pack: 6 each.

<b>IB3</b>	3 Liter (101.4 oz) bucket 9.25" x 7.5" x 8.25" (24.1 cm x 19.1 cm x 21 cm)
------------	---

<b>PARTS</b>	<b>IBL3BL</b>	Black lid
--------------	---------------	-----------



IB3  
BL / BLACK  
3L

## STEEL ICE BUCKET

Constructed from stainless steel. Double-wall virtually eliminates condensation, includes drip tray. **Hand wash.**

Case pack: 6 each.

<b>IB13SS</b>	3 Liter (101.4 oz) bucket 7" x 7" (17.8 cm x 17.8 cm)
---------------	--

<b>PARTS</b>	<b>IBSSPARTS</b>	Inside disk
--------------	------------------	-------------



IB13SS  
STAINLESS  
3L

## NON-SLIP TRAYS



Constructed from 18/8 stainless steel. Features 3 non-slip options molded in rubber grips, solid rubber, and removable rubber mat to prevent slipping. Stackable. **Dishwasher safe. Handwash removable insert.**

Case pack: 1 each/master case 12 each.

<b>TR1412RI</b>	Tray with removable insert (handwash insert) 14" (35 cm), inside 11.5" (29 cm)
<b>TR1412SR</b>	Tray with solid rubber surface 14" (35 cm), inside 11.5" (29 cm)
<b>TR1412</b>	Tray with rubber grips 14" (35 cm), inside 11.5" (29 cm)

<b>PARTS</b>	<b>TR-RI</b>	Rubber insert for TR1412RI (handwash insert)
--------------	--------------	--

**+ Innovation**

MOLDED IN PLACE  
RUBBER GRIP.

Work Together

NON-SLIP TRAY +  
STAINLESS PITCHERS (P.29)



TR1412RI  
STAINLESS

TR1412SR  
STAINLESS

TR1412  
STAINLESS



# Innovation

AT YOUR SERVICE

PICTURED: RRA3 BLACK



ECAL22SG  
STAINLESS  
2.2L

## ECO-AIR® WITH SIGHT GLASS - NEW

Stainless exterior and glass interior with vacuum insulation. Exterior sight glass to view content level. **Hand wash.**

Case pack: 1 each.

<b>ECA22SG</b>	2.2 L (74.4 oz) stainless airpot with pump lid 16" x 6" x 8" (38.7 cm x 15.2 cm x 20.3 cm)
<b>ECAL22SG</b>	2.2 L (74.4 oz) stainless airpot with lever lid 16" x 6" x 8" (38.7 cm x 15.2 cm x 20.3 cm)

<b>PARTS</b>	<b>ECASGL22</b>	2.2 L liner with gasket and protector
	<b>ECASGSP</b>	Suction pipe with level indicator
	<b>ECASGWIN</b>	Window for sightglass airpot

### + Innovation

EASY TO VIEW CONTENTS  
WITH SIGHT GLASS COVER.



RRA3 + RRPCH  
BLACK

## Work Together

ROTO RACK +  
ECO-AIR AIRPOTS (P.49)



RRPCH  
BLACK



RRA6C  
BLACK

## ROTO RACK



Black powder coated steel. Lazy susan rotation for counter space savings, holds up to 3 or 6 Eco-Air®, 6" airpots, optional sign holder for marketing coffee and condiment holder. **Airpots not included. Hand wipe.**

Case pack: 1 each.

<b>RRA3C</b>	Holds 1-3 airpots plus 1 large drip tray(DT412BL), sign kit and 3 octagonal drip trays 24.25"h x 20"dia (61.6 cm x 50.8 cm)
<b>RRA3</b>	Holds 1-3 airpots plus 1 large drip tray 24.25"h x 20"dia (61.6 cm x 50.8 cm)
<b>RRA6C</b>	Holds 1-6 airpots plus 1 large drip tray(DT412BL), sign kit and 6 octagonal drip trays 24.25"h x 20"dia (61.6 cm x 50.8 cm)
<b>RRA6</b>	Holds 1-6 airpots plus 1 large drip tray 24.25"h x 20"dia (61.6 cm x 50.8 cm)

<b>PARTS</b>	<b>RRKIT3</b>	Kit includes 3 octagon drip trays and hardware
	<b>RRSIGNKIT</b>	Sign kit includes sign topper and pole
	<b>RRTOOL</b>	Hex wrench tool
	<b>RRPCH</b>	Plastic condiment holder

### + Innovation

HOLDS MULTIPLE AIRPOTS IN  
ONE SPACE SAVING SETUP  
WITH LAZY SUSAN BASE.



DT412AL  
BLACK WITH  
ALUMINUM



DT412BL  
BLACK



DT412GD  
BLACK WITH GOLD

## DRIP TRAY



Constructed from black styrene and metal drain tray. **Hand wash.**

Case pack: 1 each.

<b>DT412AL</b>	Aluminum drip tray 12" x 4"
<b>DT412BL</b>	Black drip tray 12" x 4"
<b>DT412GD</b>	Gold drip tray 12" x 4"

## SERVICE IDEAS ECO-AIR® "BUILD YOUR OWN" AIRPOTS

Don't see exactly what you need listed? That's okay, we allow you to customize all of our Eco-Air® airpots to get exactly what you need. Mix and match your choice of shell, liner and lid, to customize all of our Eco-Air® airpots to get exactly what you need. Not sure how to get the airpot you want? Our customer service representatives can help you with that.

### + Innovation

COMBINATIONS TO SUIT  
YOUR NEEDS.

**LEVER LID**  
REGULAR OR DECAF  
"ECAL"

**PUMP LID**  
REGULAR OR DECAF  
"ECA"

**STAINLESS EXTERIOR**  
SMOOTH "S"  
JEWEL "J"

**PLASTIC EXTERIOR**  
SMOOTH/SHINY "P"  
RIBBED/MATTE "MAT"  
MATTE "SBPMAT"

**SIZES**  
1.9 LITER  
2.2 LITER  
2.4 LITER (STAINLESS ONLY)  
2.5 LITER

**LINER**  
GLASS 8 HOUR  
"ECA"  
"ECAL"  
STAINLESS 4-6 HOUR  
"ECAS"  
"ECALS"



STAINLESS  
SMOOTH



STAINLESS  
JEWELLED



SHINY PLASTIC



MATTE PLASTIC  
RIBBED



MATTE PLASTIC  
SMOOTH

PLASTIC COLORS:



BURGUNDY (BU)



FOREST GREEN (FG)



WHITE (WH)

SPECIAL ORDER: 12 WEEK LEAD TIME  
MINIMUM ORDER QTY. MAY APPLY

AIRPOTS ECO-AIR

## ECO-AIR® GLASS LINED AIRPOT



Plastic or stainless exterior with glass interior and vacuum insulation. Durable plastic shell helps prevents denting. Interchangeable lever or decaf lid options. Lid with orange pump or lever release button for decaf may be substituted by adding "D" after model number. Specify color when ordering a plastic exterior. **Hand wash/do not submerge.**

Case pack: 1 each.

PUMP LID	LEVER LID	DESCRIPTION	DIMENSIONS
ECA19S	ECAL19S	1.9 Liter (64.2 oz) smooth stainless steel airpot	14.5" x 6" x 8" (36.8 cm x 15.2 cm x 20.3 cm)
ECA22S	ECAL22S	2.2 Liter (74.4 oz) smooth stainless steel airpot	15.25" x 6" x 8" (38.7 cm x 15.2 cm x 20.3 cm)
ECA22PXX	ECAL22Pxx	2.2 Liter (74.4 oz) shiny plastic (BL, BU, FG, WH) airpot	15.25" x 6" x 8" (38.7 cm x 15.2 cm x 20.3 cm)
ECA22PBLMAT	ECAL22PBLMAT	2.2 Liter (74.4 oz) ribbed matte plastic (BL) airpot	15.25" x 6" x 8" (38.7 cm x 15.2 cm x 20.3 cm)
ECA22SBPBLMAT	ECAL22SBPBLMAT	2.2 Liter (74.4 oz) smooth matte plastic (BL) airpot	15.25" x 6" x 8" (38.7 cm x 15.2 cm x 20.3 cm)
ECAJ22S	ECALJ22S	2.2 Liter (74.4 oz) stainless steel jewel shell airpot	15.25" x 6" x 8" (38.7 cm x 15.2 cm x 20.3 cm)
ECA25S	ECAL25S	2.5 Liter (84.5 oz) smooth stainless steel airpot	16.5" x 6" x 8" (41.9 cm x 15.2 cm x 20.3 cm)
ECA25SBPBLMAT	ECAL25SBPBLMAT	2.5 Liter (84.5 oz) smooth matte plastic (BL) airpot	16.5" x 6" x 8" (41.9 cm x 15.2 cm x 20.3 cm)

## ECO-AIR® STAINLESS LINED AIRPOT



Plastic or stainless exterior with stainless interior and vacuum insulation. Durable plastic shell helps prevents denting. Unbreakable liner, interchangeable lever or decaf lid options. Optional stainless steel liner gives you 2.4L capacity. Lid with orange pump or lever release button for decaf may be substituted by adding "D" after model number. Specify color when ordering plastic exterior. **Hand wash/do not submerge.**

Case pack: 1 each.

PUMP LID	LEVER LID	DESCRIPTION	DIMENSIONS
ECAS22PXX	ECALS22Pxx	2.4 Liter (81.1 oz) shiny plastic (BL, BU, FG, WH) airpot	15.25" x 6" x 8" (38.7 cm x 15.2 cm x 20.3 cm)
ECAS22PBLMAT	ECALS22PBLMAT	2.4 Liter (81.1 oz) ribbed matte plastic (BL) airpot	16.5" x 6" x 8" (41.9 cm x 15.2 cm x 20.3 cm)
ECAS22SBPBLMAT	ECALS22SBPBLMAT	2.4 Liter (81.1 oz) smooth matte plastic (BL) airpot	16.5" x 6" x 8" (41.9 cm x 15.2 cm x 20.3 cm)
ECAJS22S	ECALJS22S	2.4 Liter (81.1 oz) stainless steel jewel shell airpot	15.25" x 6" x 8" (38.7 cm x 15.2 cm x 20.3 cm)
ECAS22S	ECALS22S	2.4 Liter (81.1 oz) smooth stainless steel airpot	15.25" x 6" x 8" (38.7 cm x 15.2 cm x 20.3 cm)

## ADDITIONAL ECO-AIR® PARTS

### LINERS

ERL19	Glass liner for ECA19
ERL22	Glass liner for ECA22
ERL25	Glass liner for ECA25
ERL22SS	Stainless steel liner for ECAS22
KITECASS25	Conversion kit for switching glass liner to stainless includes SS liner, suction pipe, gasket

### SUCTION PIPE

ESP19	Suction pipe for ECA19
ESP22	Suction pipe for ECA22
ESP25	Suction pipe for ECA25
ESP22SS	Suction pipe for ECAS22

### GASKET

ECAGAS3	Lid grommet gasket
ECAGAS7	Liner gasket
ECAGAS4A	Suction pipe collar gasket
ECAGAS4B	Suction pipe end gasket

### LIDS & FLAVOR STICKERS

ELLBL	Lever lid
ELLBLORT	Decaf lever lid (release button orange)
ELLOR	All Orange lever lid
EPL22BL	Pump lid
EPLOR	Decaf pump lid (pump orange)
EPL22OR	All orange pump lid
FSDRT	Round, paper flavor stickers (decaf, tea, regular)



ECONOMY  
STAINLESS  
SVAP

## NSF STAINLESS AIRPOT - NEW



Stainless steel exterior and interior with vacuum insulation. Unbreakable liner, interchangeable lever and decaf lids. Decaf lid available by adding "D". NSF approved. **Hand wash/do not submerge.**

Case pack: 1 each/master 6.

PUMP LID	LEVER LID	DESCRIPTION
SVAP25P	SVAP25L	2.5 Liter (84.5 oz) stainless steel airpot 6.25" x 9" x 13" (20.3 cm x 14 cm x 31.8 cm)
SVAP30P	SVAP30L	3 Liter (101.4 oz) stainless steel airpot 6.25" x 9" x 14.25" (20.3 cm x 14 cm x 33 cm)
NA	SVAP38CPL	3.8 Liter (128.5 oz) stainless steel airpot
<b>PARTS</b>		
	SVAPLL	Lever lid for SVAP
	SVAPLLD	Decaf lever lid for SVAP
	SVAPPL	Pump lid for SVAP
	SVAPPLD	Decaf pump lid for SVAP
	SVAPSP25	Suction pipe for SVAP25
	SVAPSP30	Suction pipe for SVAP30
	SVAPSP38	Suction pipe for SVAP38



ECONOMY  
STAINLESS  
SECA

## ECONOMY STAINLESS LINED AIRPOT

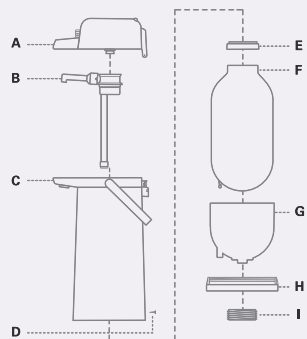


Stainless steel exterior and interior with vacuum insulation. Unbreakable liner, interchangeable lever and decaf lids. Lid with orange pump or lever release button for decaf may be substituted by adding "D" after model number. **Hand wash/do not submerge.**

Case pack: 1 each/master 6.

PUMP LID	LEVER LID	DESCRIPTION
SECA19S	SECA192	1.9 Liter (64.2 oz) stainless steel airpot 8" x 5.5" x 12.5" (20.3 cm x 14 cm x 31.8 cm)
SECA22S	SECAL22S	2.2 Liter (74.4 oz) stainless steel airpot 8" x 5.5" x 13" (20.3 cm x 14 cm x 33 cm)
SECA25S	SECAL25S	2.5 Liter (84.5 oz) stainless steel airpot 8" x 6" x 14" (20.3 cm x 15.2 cm x 35.6 cm)
SECA30S	SECAL30S	3 Liter (101.4 oz) stainless steel airpot 8" x 6" x 14" (20.3 cm x 15.2 cm x 35.6 cm)
<b>PARTS</b>		
	SESP19	Suction pipe for SECA19
	SESP22	Suction pipe for SECA22
	SESP25	Suction pipe for SECA25
	SESP30	Suction pipe for SECA30

## AIRPOT PARTS DIAGRAM



- A Lid (includes: bellows, lid gasket)
- B Suction Pipe (includes: collar gasket, tip gasket, tube, spout)
- C Exterior Stainless Steel or Plastic Body
- D Screw (may need to unscrew to remove liner)
- E-G Glass Liner (includes: E-rubber gasket, F-liner, G-plastic protector on glass liner)
- H Black Base
- I Plug (center bottom)

### 3-STEP Troubleshooting

If liquid is not dispensing or liquid is not staying hot, the following are possible solutions.

1. Tighten the center plug, located in the center of the bottom base, to secure the liner and gasket against the collar of the airpot.
2. When airpot is empty, pump or push the lever of the lid and check for airflow against the palm of your hand.
3. Inspect suction pipe for cracks.

If your airpot does not work after checking for these problems, call Customer Service at 800-328-4493.

### CARE/HANDLING

**How to Use:** For optimal retention, flip open lid and preheat airpot with warm water. Empty water and begin brewing directly into the airpot if your brewer allows you to do so, or refill with hot beverage. Close lid. Glass airpot will retain optimal retention for 8+ hours, Steel airpot will retain optimal retention for 4-6 hours. Avoid careless handling such as

tilting, tipping, dropping or any strong impact which may result in damage to the liner and vacuum seal.

**Liner replacement:** Remove lid. Unscrew metal screw at base of airpot. While holding airpot over garbage loosen bottom plug enough to unscrew entire base. Remove base and carefully remove broken glass and liner gasket. Cautiously wipe out interior with damp cloth until all glass particles are disposed. Insert new liner with new gasket. Replace base and secure liner in place by re-tightening plug. Finally, replace screw and lid.

**How to clean exterior:** Wipe with a soft damp cloth, follow with a dry cloth. How to clean interior: Clean with luke warm water and mild detergent and rinse with hot water. Never submerge in water, place in dishwasher, use brush that may scratch glass liner or use harsh cleaners.

### STORAGE

Best if stored in a cool, dry place with lid off.

### APPLICATION suggestions

**Vacuum Glass Airpots:** 8+ hour retention required

**Stainless Steel Airpots:** 4 hour retention required, unbreakable stainless liner ideal for heavy duty applications, transporting

**Plastic Outershell Airpots:** Available in five colors, these economy airpots offer a durable plastic exterior that eliminates denting and adds color

### ACCESSORIES

Static labels, Airpot racks, Airpot Cover-Ups and ID Chains.

### WARRANTY

As a distributor of fine products, Service Ideas, Inc. is interested in knowing about any problems you may experience. We will work with you individually to determine if the problem is caused by a manufacturer's defect.

### PACKAGING

For UPS approved shipping carton please add "P" to model number. \$4.50 list price..

PREMIUM  
GLASS LINEDTES22  
2.2L, 2.5L, 3LBLACKTIE  
GLASS LINEDPNUA220  
2.2L, 3LPREMIUM  
STAINLESS LINEDSSA250  
2.5L, 3L, 3.75LPREMIUM SIGHT GLASS  
STAINLESS LINEDSSA300SG  
3L

## PREMIUM GLASS-LINED AIRPOT



Stainless steel exterior with glass interior and vacuum insulation. Innovative suction pipe prevents back flow into lid. Lid with orange pump for decaf may be substituted by adding "D" after model number. **Hand wash/do not submerge.**

Case pack: 1 each.

PUMP LID	LEVER LID	DESCRIPTION
TES22	TESL22	2.2 Liter (74 oz) airpot 13.25" x 6.75" x 9.75" (33.7 cm x 17.1 cm x 24.8 cm)
TES25	TESL25	2.5 Liter (84.5 oz) airpot 14" x 7" x 9.75" (35.6 cm x 17.8 cm x 24.8 cm)
TES30	TESL30	3 Liter (101.4 oz) airpot 15" x 7.25" x 9.75" (38.1 cm x 18.4 cm x 24.8 cm)

## PARTS

O22Y	Glass liner for TES22	TESLL	Black lever lid
O25Y	Glass liner for TES25	TESLLOR	Decaf lever lid
O30W	Glass liner for TES30	TESP22	2.2 Liter suction pipe
TESLID	Black pump lid	TESP25	2.5 Liter suction pipe
TESLIDOR	Decaf pump lid	TESP30	3 Liter suction pipe
		TESGAS	Liner gasket

## BLACKTIE™ SIGHT GLASS, GLASS-LINED AIRPOT



Plastic exterior with a glass interior and vacuum insulation. Features an easy to view content level with flushed to body sight glass. **Hand wash/do not submerge.**

Case pack: 1 each.

PNUA220	2.2 Liter (74 oz) airpot 13" x 7.25" x 9" (33 cm x 18.4 cm x 22.9 cm)
PNUA300	3.0 Liter (101.4 oz) airpot 14.5" x 7.25" x 9" (36.8 cm x 18.4 cm x 22.9 cm)

PARTS	PNUA22L	Black pump lid for 2.2 L
	PNUA3L	Black pump lid for 3 L

## STEELVAC™ STAINLESS-LINED AIRPOT



Stainless steel exterior and interior with vacuum insulation. Interchangeable lever or decaf lid options. Lid with orange pump or lever release button for decaf may be substituted by adding "D" after model number. **Hand wash/do not submerge.**

Case pack: 1 each.

PUMP LID	LEVER LID	DESCRIPTION
SSA250	SSAL250	2.5 Liter (84.5 oz) airpot 14.5" x 7.25" x 9.75" (36.8 cm x 18.4 cm x 24.8 cm)
SSA300	SSAL300	3 Liter (101.4 oz) airpot 15.5" x 7.25" x 9.75" (39.4 cm x 18.4 cm x 24.8 cm)
SSA375	SSAL375	3.75 Liter (126.8 oz) airpot 17" x 7.25" x 9.75" (43.2 cm x 18.4 cm x 24.8 cm)

## PARTS

SSALL	Lever lid
SSALLOR	Decaf lever lid (release button orange)
SSAPL	Pump lid
SSALOR	Decaf pump lid (pump orange)
SSASP250	2.5L suction pipe
SSASP300	3L suction pipe
SSASP375	3.75L suction pipe

## STEELVAC™ STAINLESS-LINED SIGHT GLASS



Stainless steel exterior and interior with vacuum insulation. Interchangeable lever or decaf lid options. Exterior sight glass to view content levels with extra sightglass and cleaning brush. Lid with orange pump or lever release button for decaf may be substituted by adding "D" after model number. **Hand wash/do not submerge.**

Case pack: 1 each.

SSA300SG	3 Liter (101.4 oz) pump lid with sight glass airpot 15.5" x 7.25" x 9.75" (39.4 cm x 18.4 cm x 24.8 cm)
SSAL300SG	3 Liter (101.4 oz) lever lid with sight glass airpot 15.5" x 7.25" x 9.75" (39.4 cm x 18.4 cm x 24.8 cm)

PARTS	SSALL	Lever lid
	SSALLOR	Decaf lever lid
	SSAPL	Pump lid
	SSALOR	Decaf pump lid
	SSASGC	Sight glass and brush
	SSASP300	3L suction pipe



APCL22CH  
CHROME W/MODERN HANDLES  
PUMP AVAILABLE



APCTSCH  
CHROME W/ MODERN HANDLES  
LEVER AVAILABLE



APC22  
CHROME/BRASS  
LEVER AVAILABLE



APCLTS  
CHROME/BRASS  
PUMP AVAILABLE

## AIRPOT COVER-UPS

Stainless steel construction with brass accents. Dresses up and extends life of airpots. Fits multiple airpots with adjustable base (APCTS) or Eco-Air 2.2L (APC22). Upon request available with contemporary handles and silver plated, 4-6 week lead time may apply.

**Wipe with cloth to clean.**

Case pack: 1 each.

### ECO-AIR

APC22	Brass accent, holds 2.2 Liter ECA22 pump airpot 17" x 9" x 12" (43.2 cm x 22.9 cm x 30.5 cm)
APCL22	Brass accent, holds 2.2 Liter ECAL22 lever airpot 17" x 9" x 12" (43.2 cm x 22.9 cm x 30.5 cm)
APC22CH	All chrome, holds 2.2 Liter ECA22 pump airpot 17" x 9" x 12" (43.2 cm x 22.9 cm x 30.5 cm)
APCL22CH	All chrome, holds 2.2 Liter ECAL22 lever airpot 17" x 9" x 12" (43.2 cm x 22.9 cm x 30.5 cm)

### PREMIUM Airpots

APCTS	Brass accent, holds all TES/SSA pump lid airpots 18" x 10" x 13" (45.7 cm x 25.4 cm x 33 cm)
APCLTS	Brass accent, holds all TES/SSA lever lid airpots 18" x 10" x 13" (45.7 cm x 25.4 cm x 33 cm)
APCTSCH	All chrome, holds all TES/SSA pump lid airpots 18" x 10" x 13" (45.7 cm x 25.4 cm x 33 cm)
APCLTSCH	All chrome, holds all TES/SSA lever lid airpots 18" x 10" x 13" (45.7 cm x 25.4 cm x 33 cm)

### PARTS

#### BRASS

APC22PL	Eco-Air pump lid
APCL22	Eco-Air lever lid
APCTSLL	Premium lever lid
APCTSLID	Premium pump lid
APCTSBRHNDL	Brass ornate handle

#### CHROME

APC22PLCH	Eco-Air pump lid
APCLLCH	Eco-Air lever lid
APCTSLLCH	Premium lever lid
APCTSCHLID	Premium pump lid
APCTSCHHNDL	Chrome modern handle



PNWASTD250  
BLACK  
2.5L



PNWA250  
WITH OGH8811  
BLACK  
2.5L

## GRAVITY-SERV™



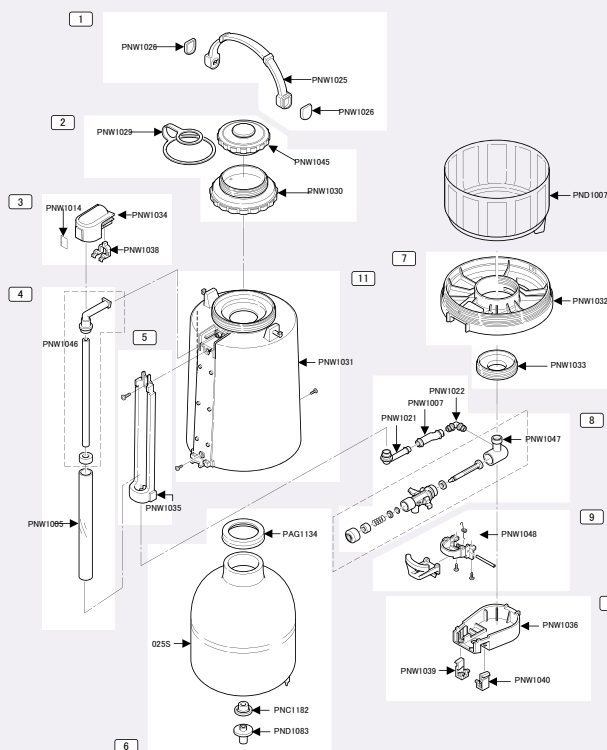
Plastic exterior with a glass interior and vacuum insulation. Features a sight glass to view content level and draw off dispensing. Fits most stands. Ask about special pallet pricing. **Hand wash.**

Case pack: 1 each.

<b>PNWA250</b>	2.5 Liter (84.5 oz) 12" x 8" (30.5 cm x 20.3 cm)
<b>PNWASTD250</b>	2.5 Liter (84.5 oz) with stand
<b>OGH8811</b>	Adjustable plastic stand for PNWA250 8" x 8" x 11" (20.3 cm x 20.3 cm x 27.9 cm) Lower cup clearance 7.5". Raised cup clearance 4".

## PARTS DIAGRAM

1. PNWAHNDL Handle for PNWA250
2. PNWALID Lid for PNWA250
3. PNWAFACE Panel cap for PNWA250
4. PNWASGK Sight glass kit for PNWA250
5. PNWASGCAP Sight glass cap for PNWA250
6. PNWALINER Liner for PNWA250
7. PNWABASE Base for PNWA250
8. PNWAVTK Valve & tubing kit for PNWA250
9. PNWALEVER Lever for PNWA250
10. PNWAVLV Bottom valve for PNWA250
11. PNWACASE Body case for PNWA250



## Work Together

WIRE RACKS +  
AIRPOTS (P.49-51)



APR3BLC  
BLACK



CBR915  
BLACK



APR2BLC  
BLACK

## Work Together

AIRPOT STANDS +  
AIRPOTS (P.49-51)



APS2BL  
BLACK



APS1CBL  
BLACK



HR21B  
BLACK

AVAILABLE IN BLACK FINISH

### WIRE RACKS



Steel wire with powder coat finish. Connect the APR2 and APR3 together to make a 5 station rack. Drip trays included as shown.

**Airpots not included. Hand wash.**

Case pack: 1 each.

APR2BLC	2 airpot rack fits all airpots. Rack holds two airpots (any size). 9.5" x 12" x 20.5" (24.1 cm x 30.5 cm x 51.4 cm)
APR3BLC	3 airpot rack fits all airpots. Rack holds two airpots (any size). 14" x 12" x 23.5" (35.5 cm x 30.5 cm x 59.7 cm)
CBR915	Coffee box rack 9" x 15" (22.9 cm x 38.1 cm)

PARTS	DT45	Octagon drip tray 4.5" (11.4 cm)
-------	------	----------------------------------

### AIRPOT STANDS



Constructed from black styrene with reinforced corners. Features an interlock system. **Airpots not included. Hand wash.**

Case pack: 1 each.

HR21B	Stand holds single airpot with drip tray 14" x 8.5" (35.6 cm x 21.6 cm)
APS1CBL	Stand holds one 6" or 7.25" airpot and 3 condiment bins 24.5" x 7.25" x 16" (61.6 cm x 18.4 cm x 40.6 cm)
APS2BL	Stand holds two 6" or 7.25" airpots 24.25" x 7.75" x 16.25" (61.6 cm x 19.7 cm x 41.3 cm)



HCT2  
BLACK

HCT4  
BLACK



OCH7715C  
BLACK



OCH7715  
BLACK



SC1090  
BLACK



01212  
FOR: DECANTER  
BOWLS, GLASS &  
STAINLESS LINED  
CARAFES AND  
AIRPOTS



02262  
FOR: BREW BASKET



12632  
FOR PLASTIC,  
STAINLESS



1124SI

## CONDIMENT ORGANIZERS

Constructed from black styrene. Organize your condiments with compartments. **Hand wash.**

Case pack: 1 each.

- HCT2** 2 part condiment organizer  
9" x 8" x 7.75" (22.9 cm x 20.3 cm x 19.7 cm)
- HCT4** 4 part condiment holder  
17.5" x 10" x 7.75" (44.5 cm x 25 cm x 19.7 cm)

## COMPARTMENT CONDIMENT ORGANIZER

Constructed from black styrene. Organized compartments for condiments. **Hand wash.**

Case pack: 24 each.

- OCH7715** 3 part octagon open condiment organizer  
7" x 7" x 15" (17.8 cm x 17.8 cm x 38.1 cm)
- OCH7715C** 3 part octagon closed condiment organizer  
7" x 7" x 15" (17.8 cm x 17.8 cm x 38.1 cm)
- SC1090** 6 compartment organizer  
13.75" x 7.75"  
Circles: 3.25" diameter, 0.5" deep  
Rectangle: 7.75" x 1.25", 4.25" x 2.75", 2.5" x 6", all 0.5" deep

## CDCC COFFEE & TEA DISPENSER CLEANERS

Biodegradable, non-toxic cleaners. Fast, safe, easy cleaning with single rinse and NO scrubbing. Effective for glass, plastic and stainless steel materials. Detailed "How To Use" instructions on individual products.

- 01212** 12 oz cleaner (case pack 1 each) 24 uses - great for glass lined carafes and airpots
- 02262** .75 oz cleaner (case pack 25 each) - great for cleaning brewers
- 12632** 32 oz cleaner (case pack 1 each) - great for plastic and stainless steel servers

## FIRST AID KIT

Features quality and brand name first aid supplies for aches/pains, eye care, cuts/scrapes, thermal, disinfectant and more.

- 1124SI** First aid kit, 173 pieces (25 person) (9" x 9" x 3")

# Brew N' Serv™ BREWER PACKAGES



SIBAPA



SIATAPA

## POUR OVER BREWER PACKAGE

Sold with two Eco-Air™ glass lined airpots, a six compartment condiment organizer and airpot cleaner.

**SIBAPA** Pour over brewer package  
 Electrical: 120V/1400W/11.7A  
 Brew capacity: 1/2 gallon (1.9L)  
 Dimensions: 8.5" x 16.5" x 22.5" (22 cm x 42 cm x 57 cm)  
 Listing: UL, NSF  
 Factory volume timer set at 58 OZ—max. setting 84 oz

**PARTS** BREW BASKET  
 SPRAY HEAD

## AIRPOT AUTOMATIC BREWER PACKAGE

Sold with two Eco-Air™ glass lined airpots, a six compartment condiment organizer and airpot cleaner.

**SIATAPA** Airpot automatic brewer package  
 Electrical: 120V/1780W/14.8A  
 Brew capacity: 75 oz (2.2L)  
 Dimensions: 8.5" x 16.5" x 24.25" (22 cm x 42 cm x 61 cm)  
 Listing: UL, NSF  
 Factory volume timer set at 58 OZ—max. setting 84 oz

**PARTS** BREW BASKET  
 SPRAY HEAD

SPECIAL BROCHURE AVAILABLE

# Brew N' Serv™ BREWER PACKAGES



SITATTCA



SIBL3PWA

## THERMAL CARAFE AUTOMATIC BREWER PACKAGE

Sold with two Brew N' Pour™ Steelvac Carafes, a six compartment condiment organizer and carafe cleaner.

**SIATTCA** Thermal carafe automatic brewer package  
 Electrical: 120V/1780W/14.8A  
 Brew capacity: 75 oz (2.2L)  
 Dimensions: 8.5" x 16.5" x 18" (22 cm x 42 cm x 45 cm)  
 Listing: UL, NSF  
 Factory volume timer set at 58 OZ—max. setting 84 oz

**PARTS** BREW BASKET  
 SPRAY HEAD

## 3 WARMER POUROVER BREWER PACKAGE

Sold with six polycarbonate plastic body decanters with steel base, a six compartment condiment organizer and decanter cleaner.

**SIBL3PWA** 3 warmer pourover brewer package  
 Electrical: 120V/1700W/14.2A  
 Brew capacity: 1/2 gallon (1.9L)  
 Dimensions: 15.5" x 16.5" x 16.5" (40 cm x 42 cm x 42 cm)  
 Listing: UL, NSF  
 Factory volume timer set at 58 OZ—max. setting 84 oz

**PARTS** BREW BASKET  
 SPRAY HEAD

CALL FOR SPECIAL NET PRICING

# Innovation

FRESHLEY BREWED

PICTURED: URNCH



URN  
POLISHED STAINLESS WITH  
BRASS ACCENTS



URNCH  
POLISHED STAINLESS WITH  
CHROME ACCENTS

3 SIZES AVAILABLE IN BOTH FINISHES



IT3GPL  
STAINLESS  
3G



IT5GPL  
STAINLESS WITH ITSRL LID  
5G

BOTH SIZES AVAILABLE IN STAINLESS FINISH

## INSULATED URNS



Constructed from stainless steel with foam insulation. The insulation eliminates need for sterno or a plugin. For optimal retention, remove or flip open lid and preheat server with warm water. Empty contents and refill with hot beverage. Secure lid closure. Urn will maintain optimal retention for 2-3 hours. Varying factors that effect temperature are content levels, topping off, open lids. Add CH for all stainless finish. **Hand wash.**

Case pack: 1 each.

URN15	1.5 Gallon urn 22.5" x 12.5" x 14" (57.2 cm x 31.8 cm x 35.6 cm)
URN30	3 Gallon urn 25.5" x 14" x 15.5" (64.5 cm x 35.6 cm x 38.1 cm)
URN50	5 Gallon urn 28.5" x 16" x 17" (72.4 cm x 40.6 cm x 43.2 cm)

PARTS	URN15LID	1.5 gallon urn lid
	URN30LID	3 gallon urn lid
	URN50LID	5 gallon urn lid
	URN15LEG	1.5 gallon urn stand
	URN30LEG	3 gallon urn stand
	URN50LEG	5 gallon urn stand
	URN15GAS	1.5 gallon urn gasket
	URN30GAS	3 gallon urn gasket
	URN50GAS	5 gallon urn gasket
	URNSPIG	Replacement spigot
	URNSPIGGW	Replacement spigot gasket and washer for spigot.

+ Innovation

NO STERNO OR ELECTRICITY  
REQUIRED.

## TEA URNS

Constructed from stainless steel with a plastic lid. Features staggered rubber grip handles. Stainless lid sold separately. **Hand wash in pot sink.**

Case pack: 1 each.

IT3GPL	3 Gallon urn with plastic lid 16.75" x 11.25" x 15.5" (41.9 cm x 28.1 cm x 38.8 cm)
IT5GPL	5 Gallon urn with plastic lid 21.75" x 11.25" x 15.5" (54.4 cm x 28.1 cm x 38.8 cm)

PARTS	ITPRL	Plastic replacement lid for IT
	ITSPIG	Replacement spigot for IT3 and IT5
	ITSRL	Stainless steel replacement lid for IT3 and IT5



LATTE6S  
STAINLESS  
6L



GSP1S7  
STAINLESS  
7L  
4L AVAILABLE



80702720  
STAINLESS  
4L  
7L AVAILABLE



80702690  
STAINLESS  
DOUBLE 7L  
4L AVAILABLE

## ZE PÉ BEVERAGE DISPENSERS



Base constructed from stainless, wood (special order), or polycarbonate (special order), container and tube from acrylic blend plastic, LATTE container from stainless. Features an ice tube that chills without diluting liquids. **Hand wash container in low temperature (under 135 F), wipe off base.**

Case pack: 1 each.

GSP1S4	4 Liter (1 gallon) stainless dispenser 13.5" x 7.25" x 21.5" (34.3 cm x 18.4 cm x 64.6 cm)
GSP1S7	7 Liter (1.8 gallon) stainless dispenser 15.5" x 9" x 30" (39.4 cm x 22.9 cm x 76.2 cm)
LATTE6S	6 Liter (1.6 gallon) single wall dispenser. For cold beverages only. 22.5" x 15" (55.9 cm x 38 cm)
80702720	4 Liter (1 gallon) single stainless dispenser 7.5" x 13" x 21.3" (19 cm x 33 cm x 54 cm)
80702710	4 Liter (1 gallon) double stainless dispenser 15" x 13" x 21.3" (28 cm x 33 cm x 54 cm)
80702700	7 Liter (1.8 gallon) single stainless dispenser 8.7" x 15" x 24" (22 cm x 38 cm x 61 cm)
80702690	7 Liter (1.8 gallon) double stainless dispenser 17.3" x 15" x 24" (44 cm x 38 cm x 61 cm)
10305710	Pitcher display with 3 - 2.8 Liter polycarbonate pitchers - <b>NEW</b> 19.7" x 6.3" x 12.6" (50 cm x 16 cm x 32 cm)

### AVAILABLE by special order-call for pricing

GSP2NINO	7 Liter (1.8 gallon) double wood dispenser 28.5" x 15.25" (72.4 cm x 38.7 cm)
GSP1L	7 Liter (1.8 gallon) single wood dispenser 26.25" x 15.5" (66.6 cm x 39.3 cm)
GSP2MIGNON	4 Liter (1 gallon) double wood dispenser 20.25" x 12.25" (51 cm x 30.8 cm)
GSP1P7W	7 Liter (1.8 gallon) white plastic dispenser 8.7" x 15" x 24" (22 cm x 38 cm x 61 cm)

PARTS	CONT2	4 Liter container
	CONT1	7 Liter container
	JLID807	4 Liter 807 series stainless lid
	JLID8077	7 Liter 807 series stainless lid
	JLIDS2	4 Liter stainless lid
	JLIDS1	7 Liter stainless lid
	JLIDP1	7 Liter white plastic lid
	ICE2	4 Liter ice tube ICE2
	ICE1	7 Liter ice tube
	SPIGOT	Spigot
	SPIGOT807	807 series spigot
	GSPGAS	O-ring and gasket for GSP spigot
	GSPSDT	4.25" grate
	GSPSDT2	4" grate
	GSPSDT3	4.75" grate



GSP2MIGNON  
CHERRY WOOD  
4L  
7L AVAILABLE  
SPECIAL ORDER. 8 WEEK LEAD TIME



GSP1P7W  
WHITE  
SPECIAL ORDER  
ORANGE & BLUE



10305710



80700610  
STAINLESS SINGLE  
(HOLDS APPROX. 15 CUPS)



80700620  
STAINLESS DOUBLE



MULINO2S  
STAINLESS DOUBLE 3L  
MULINO1S (SINGLE) AVAILABLE



MULINO1S7  
STAINLESS SINGLE 7L  
(HOLDS APPROX. 34 CUPS)

## ZE PÉ CEREAL DISPENSERS

Base constructed from stainless, wood (special order), or polycarbonate (special order), container from acrylic blend. Features portion control windmill. **Hand wash container in low temperature (under 135 F), wipe off base.** Case pack: 1 each.

MULINO1S	3 Liter (101.4 oz) single stainless dispenser 18" x 14" x 12" (45.7 cm x 35.5 cm x 30.5 cm)
MULINO1S7	7 Liter (1.8 gallon) single stainless dispenser 21.5" x 8.5" (55 cm x 22 cm)
MULINO2S	3 Liter (101.4 oz) double stainless dispenser 20" x 20" x 13" (50.8 cm x 50.8 cm x 33 cm)
80700610	3 Liter (101.4 oz) single stainless dispenser 7" x 7" x 22.5" (18 cm x 18 cm x 57 cm)
80700620	3 Liter (101.4 oz) double stainless dispenser 13" x 7" x 22.5" (33 cm x 18 cm x 57 cm)

### AVAILABLE by special order-call for pricing

MULINO1PW	3 Liter (101.4 oz) single white plastic dispenser 18" x 14" x 12" (45.7 cm x 35.5 cm x 30.5 cm)
MULINO2PW	3 Liter (101.4 oz) double white plastic dispenser 20" x 20" x 13" (50.8 cm x 50.8 cm x 33 cm)
MULINO1L	3 Liter (101.4 oz) Single wood dispenser 18" x 14" x 12" (45.7 cm x 35.5 cm x 30.5 cm)
MULINO2L	3 Liter (101.4 oz) double wood dispenser 20" x 20" x 13" (50.8 cm x 50.8 cm x 33 cm)

PARTS	CLID	Stainless lid 3 Liter
	CLID7	Stainless lid 7 Liter
	LID807	807 series stainless cereal lid
	WIND	Windmill and hardware
	ZEPEBOWL1	4.75" bowl 807 series
	ZEPEBOWL2	5.5" bowl for MULINO series
	CYPACK	Cereal dispenser: container, paddle, hardware for 3 liter
	CYPACK7	Cereal dispenser: container, paddle, hardware for 7 liter

## ZE PÉ BUFFETWARE

Stainless base with a plastic cover. Features a refrigerated tray.

**Hand wash with non abrasive, material approved cleaners.**

Case pack: 1 each

CLOCHE1S	Refrigerated, dome stainless tray 22" x 14" x 10.5" (55.9 cm x 35.6 cm x 26.7 cm)
----------	--

PARTS	50303453	Icepack
-------	----------	---------

Stainless inset with plastic base. Features 2" diameter cut-outs to hold yogurt, bottles, etc. Refrigerated ice packs.

Hand wash with non abrasive, material approved cleaners

Case pack: 1 each

YOGURT28W	28, 2" opening tray w/base 25" x 17" x 2.5" (64 cm x 43 cm x 6.5 cm)
-----------	---

PARTS	50303453	Icepack
-------	----------	---------



MULINO1PW  
WHITE SINGLE 3L  
MULINO2PW (DOUBLE) AVAILABLE  
SPECIAL ORDER. 8 WEEK LEAD TIME  
(HOLDS APPROX. 15 CUPS)



MULINO1L  
WOOD SINGLE 3L  
SPECIAL ORDER. 8 WEEK LEAD TIME  
(HOLDS APPROX. 15 CUPS)



CLOCHE1S  
STAINLESS



YOGURT28W  
WHITE  
SPECIAL ORDER ORANGE & BLUE

CHEESE ROLL TOP



COOLED ROLL TOP



TOP BAR



PRE-ASSEMBLED CART  
SHOWN WITH OPTIONAL TOPS

## ZE PÉ SERVING CARTS

Customize a cart to fit your needs. Special order, 8 week lead time. Constructed from solid wood. Locking casters available on pre-assembled carts. **Wipe off with damp cloth.**

Case pack: 1 each.

### REQUEST ADDITIONAL CART INFORMATION, PRICING AND CATALOG.

37030300x	Round pre-assembled Cart
	23.6" x 40.2" x 30.7" (60 cm x 102 cm x 78 cm)
47006300x	Cheese roll top
	25.6" x 13.8" (65 cm x 35 cm)
47003303x	Cooled roll top
	25.6" x 13.8" (65 cm x 35 cm)
47040400x	Top bar
	25.6" x 5.5" (65 cm x 14 cm)

FINISHES available - Specify for "x":



T / TANGANIKA N / WALNUT M / MAHOGANY P / ROSEWOOD W / WENGÉ

### + Innovation

ONE BASE TO USE WITH  
MULTIPLE TOPS.



MANY STYLES AND CONFIGURATIONS ARE AVAILABLE.  
REQUEST A CATALOG FOR MORE DETAILS.



GIU15G  
STAINLESS  
1.5G



GIUPLSTAND



GIU2G  
STAINLESS  
2G

## THERMAL CONTAINERS

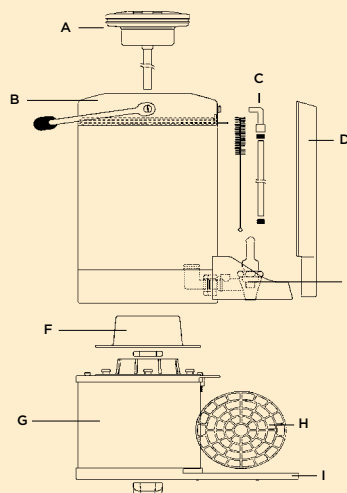


Stainless steel exterior and interior with vacuum insulation. Features a brew-thru top over molded rubber carrying handle for easy grip. Removable base. Two replacement sightglass tubes and brush stored behind capacity gauge. Drip tray included. Carrying handles included on both sizes. **Hand wash.**

Case pack: 1 each.

<b>GIU15G</b>	1.5 Gallon container 19.5" x 8.75" x 13.5" (48.8 cm x 22.2 cm x 34.3 cm)
<b>GIU2G</b>	2 Gallon container 23.5" x 8.75" x 13.5" (59.7 cm x 22.2 cm x 34.3 cm)

## PARTS DIAGRAM



### A. LID AND FILLING TUBE ASSEMBLY

GIU15GFUN	FOR GIU15G
GIU2GFUN	FOR GIU2G

### B. LID WITH HANDLES

GIU2GLIDH	
-----------	--

### C. SIGHT GLASS KIT

GIU15GKIT	FOR GIU15G
GIU2GKIT	FOR GIU2G

### D. GAUGE GLASS SHIELD

GIU15GSHIELD	FOR GIU15G
GIU2GSHIELD	FOR GIU2G

### E. FAUCET KIT

GIU2GFAUC	FOR GIU2G/GIU15G
-----------	------------------

### F. LINER MOUNTING AND PLUG

GIUMOUNT	LINER RETAINER AND PLASTIC NUT FOR GIU15G AND 2G
----------	---

### G. PLASTIC STAND

GIUPLSTAND	FOR GIU2G/GIU15G
------------	------------------

### H. DRIP TRAY

GIU2GDT	FOR GIU2G/GIU15G
---------	------------------

### I. PLUG (CENTER BOTTOM)

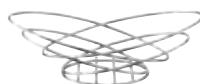
GIUPLUG	BLACK PLASTIC NUT WING FOR BASE FOR GIU15G AND 2G
---------	--



HOT SOLUTIONS™  
PAGE 5



THERMO-PLATE™  
PLATTERS PAGES 6



BREAD BASKET  
PAGE 7



WINE CHILLER  
PAGE 7



RAIN DROP  
PAGE 9



NUAGE LINE  
PAGE 10-11



METROPOLIS  
PAGE 13



ECO-LINE PLATES  
PAGE 15



SYRUP CADDY  
PAGE 16



TABLE ORGANIZER  
PAGE 17



SUGAR/CREAMER SET  
PAGE 17



CERAMIC TEAPOT  
PAGE 19



TEA CHEST  
PAGE 19



FINUM  
PAGE 20



TEA BALL  
PAGE 21



PLASTIC TEAPOT  
PAGE 21



AERO SERV  
PAGE 22



NEW GENERATION™  
PAGE 23



PUSH BUTTON  
METALLIC PAGE 24



THERMO-SERV®  
PAGE 25



SWIRL SERVER  
PAGE 26



ALFI® JUWEL  
PAGES 27 & 36



ALFI® ALBERGO  
PAGES 28 & 38



ALFI HOTEL  
PAGE 27



WJ SERIES  
PAGES 28



ALFI NOBLE  
PAGE 28



982 SERVER  
PAGE 29



STAINLESS PITCHER  
PAGE 29



PWL STEELVAC™  
PAGE 30



BREW N' POUR™  
PAGE 31



S2 STEELVAC™  
PAGE 32



CLASSIC CARAFE™  
PAGES 32 & 39



ALFI® KUGEL BALL  
PAGE 33



ALFI® NOMOS  
PAGE 34



ALFI® DIANA  
PAGE 35



PUSH N' SERV™  
PAGE 39



BRICK PRESS  
PAGE 40



STAINLESS PRESS  
PAGE 41



ALFI® COOL BOTTLE  
PAGE 42



ICE TUBE PITCHER  
PAGE 42



IDENTIFICATION  
MAGNETS PAGE 43



FROTHING PITCHER  
PAGE 44



TRAY  
PAGE 45



ICE BUCKET  
PAGE 45



AIRPOT ROTO RACK  
PAGE 47



ECO-AIR® AIRPOTS  
PAGE 47-49



SVAP  
PAGE 50



PREMIUM GLASS - TES  
PAGE 51



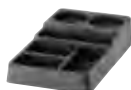
AIRPOT COVER-UP  
PAGE 52



GRAVITY-SERV™  
PAGE 53



WIRE RACKS  
PAGE 54



CONDIMENT HOLDER  
PAGE 55



BREWERS PACKAGES  
PAGE 56-57



URNS  
PAGE 59



ZE PÉ BEVERAGE  
PAGE 60



ZE PÉ PITCHER DISPLAY  
PAGE 60



ZE PÉ CEREAL  
PAGE 61



ZE PÉ TRAY  
PAGE 61



ZE PÉ SERVING CARTS  
PAGE 62



THERMAL CONTAINER  
PAGE 63

---

# Care & Handling Information

---

## PLASTIC-LINED SERVERS

---

### HANDLING

For optimal retention, remove or flip open lid and preheat server with warm water. Empty contents and refill with hot beverage. Secure lid closure. Server will maintain optimal retention no longer than 2-3 hours. Varying factors that effect temperature are content levels, topping off, open lids. Servers should not be heated in a microwave.

### CLEANING

For optimal care, servers should be hand washed with mild detergents. Where noted, servers constructed with an ultrasonic weld are dishwasher safe in most commercial dishwashers where temperatures do not rise above 185 F. However, please check MSDS forms of detergents since some do interact unfavorably with plastics. To clean push-button lids, depress button and flush water through. Push button lids are not dishwasher safe. Never clean plastic servers with vinegar as it will be absorbed by the material and leave a vinegar taste.

### STORAGE

Store in a cool, dry place away from any heat sources.

### TROUBLE shooting

Cracks in body are usually from a chemical reaction and extended use. Bulging to the inner liner or exterior body may be caused by extreme heat conditions. Welded lids may separate over time and are able to be purchased separately. Gapping may occur between joints of the product as a result of wear and tear over an extended time. Servers should never be heated in a microwave.

### WARRANTY

Products noted with symbol are warranted against manufacturer defects for specified years. As a manufacturer of fine products, Service Ideas, Inc. is interested in knowing about any problems you may experience. We will work with you individually to determine if the problem is caused by a manufacturer's defect.

## STAINLESS-LINED SERVERS

---

### HANDLING

To obtain optimal retention, remove lid and preheat with warm water. Empty water, refill with hot beverage and replace lid.

### CLEANING

Exterior-wipe with a soft, damp cloth and follow with dry cloth. Interior-clean with warm water and mild detergent. Rinse with hot water. Never submerge server in water or place in a dishwasher. Lids may be rinsed with hot water.

### STORAGE

Product is best stored in a cool, dry place away from all heat sources.

### TROUBLE shooting

If your server is not holding heat and the above procedures are followed, it may be a result of a broken vacuum. A strong impact and dishwashing may contribute to the vacuum being compromised.

### WARRANTY

As a manufacturer of fine products, Service Ideas, Inc. is interested in knowing about any problems you may experience. We will work with you individually to determine if the problem is caused by a manufacturer's defect.

## GLASS-LINED SERVERS

---

### HANDLING

For optimal retention, remove lid and preheat server with warm water. Empty water and refill with hot beverage. Server will retain optimal retention for 8+ hours.

### CLEANING

Service Ideas, Inc. recommends that all products with vacuum insulation be hand washed. Exterior: Wipe with a soft, damp cloth, follow with a dry cloth. Interior: Clean with luke warm water and mild detergent and rinse with hot water. Never submerge in water, place in a dishwasher, use a brush that may scratch glass liner or use harsh chemical detergents.

### STORAGE

Best if stored in a cool, dry place away from any heat sources.

### TROUBLE shooting

Moisture between the outer shell and bottom plate or leaking, in most cases is a result of server being immersed in water or liner not secure within body. Liner may be adjusted by tightening bottom plug.

### WARRANTY

As a manufacturer of fine products, Service Ideas, Inc. is interested in knowing about any problems you may experience. We will work with you individually to determine if the problem is caused by a manufacturer's defect.