

TACTICAL/RESCUE



BLACKHAWK
COLUMBIAN ROPE
EAGLE
PETZL
PMI ROPE



SRTSUPPLY
Equipping You to Master your World

BLACKHAWK!

TACTICAL VESTS



Omega Cross Draw /
Pistol Mag
Part # 30VT26BK-ALL



D.O.A.V. System
Part # 30DV00BK,WC



Omega Phalanx
HSV Vest
Part # 30VT35BK



Omega Operator
40 mm/Rifle OD Green
Part # 30VT29OD



S.T.R.I.K.E. MOLLE
DOAV Vest
Part # 37CL07OD



S.T.R.I.K.E. MOLLE
Omega Vest - Long
Part # 37CL36-ALL



S.F. Enhanced
Load Bearing Vest
Part # 31SF03BK,DE,OD,WC



Tactical Float Vest II
Part # 30TFV2BK



Omega Tactical Vest EOD
Part # 30VT05BK-ALL



Omega Vest
Shotgun/Utility
Part # 30VT22BK-ALL



Urban Vest
Assault Black
Part # 33UA00BK-ALL



R.A.C.K. Ranger Assault Carry
Kit WC(Kit #2)
Part # 990656WC



Omega Tactical Vest
Cross Draw
Part # 30VT09BK-ALL



Omega Tactical
Vest Medic/Utility
Part # 30VT08BK-ALL



Omega Tactical
Vest-Modular
Part # 30VT21BK-ALL



ISSAK 60/SAW
Gunner Kit
Part # 30HH03DE,OD



Omega Vest
Rifle/Shotgun Black
Part # 30VT31BK



Spec Ops H-Gear
Shoulder Strap
Part # 35SS00BK,OD



Tac-Vest Gas Mask Pouch
Part # 50GM01BK-OD



Tac-Vest Radio Pouch
Part # 53RP00BK,OD



Load Bearing
Suspenders
Part # 35LBS1BK,OD



ISSAK
Rifleman Kit
Part # 30HH02DE,OD



SRTSUPPLY
Equipping You to Master your World

TACTICAL VESTS



Gen-4 Molle System
L.R.R.P. Butt Pack GP
Part # 37CL17ALL



Gen-4 Molle System 1Qt.
Canteen-Mag Pouch
Part # 37CL11ALL



Gen-4 Molle System
40MM Grenade Pouch(2)
Part # 37CL22ALL



Gen-4 Molle System
M4-Triple Mag Pouch
Part # 37CL04ALL



Gen-4 Molle System
Gas Mask Carrier
Part # 37CL19ALL



Gen-4 Molle System
Admin/Compass/Flash Pch
Part # 37CL32ALL



Gen-4 Molle System
AK/M4 Trpl Mag Pch.
Part # 37CL05ALL



Gen-4 Molle System
Ammo Pouch Shotgun 12rnd
Part # 37CL30ALL



Gen-4 Molle System
Compass/Strobe Pouch
Part # v37CL38ALL



Gen-4 Molle System
Dbl Pistol Mag Pouch
Part # 37CL09ALL



Gen-4 Molle System
Deployment Kit Bag
Part # 37CL31ALL



Molle System
M4-Dble Mag Pouch
Part # 37CL03ALL



Gen-4 Molle System
Frag Grenade Pouch Dble
Part # 37CL13ALL



Molle Frag Grenade
Pouch - Single
Part # 37CL12ALL



Molle M60
Ammo Pouch 100rnd
Part # 37CL27ALL



Gen-4 Molle
System Medical Pouch
Part # 37CL18ALL



Molle System
Radio Pouch-MBITR
Part # 37CL20ALL



Molle System
Smoke Grenade
Sngl Pch.
Part # 37CL14ALL



Molle M4-
Single Mag Pouch
Part # 37CL02ALL



Molle SAW Pouch
w/Det Top
Part # 37CL28ALL



Molle System
Small Radio/GPS Pouch
Part # 37CL35ALL



Gen-4 Molle System
Dble Pist Mag Pch
Part # 37CL10ALL



Molle M4
Pistol Pouch
Part # 37CL24ALL



S.T.R.I.K.E. MOLLE
Upright GP Pouch
Part # 37CL52-ALL



S.T.R.I.K.E. MOLLE System
Rapid Mobile Plate Carrier
Part # 37CL71-ALL



Molle System
Radio Pouch-PRC-112/LG
Part # 37CL26ALL



Molle System
Sngl Pist Mag Pouch
Part # 37CL08ALL



Molle System
Utility Pouch
Part # 37CL21ALL



Molle System
Pop Flare Pouch
Single-Up
Part # 37CL15ALL



Molle MP5
Triple Mag Pouch
Part # 37CL29ALL



SRTSUPPLY
Equipping You to Master your World

TACTICAL HOLSTERS & ACCESSORIES



Ambidextrous
Flat Belt Holster Black
Part # 40FB02BK



Angle Draw
Shoulder Holster
Part # 40SH00BK



Concealed
Shoulder Holster
Part # 40SH02BK



Executive
Protection Hip Holster
Part # 40BG00,2,3,4



Concealed Ankle
Holster Black
Part # 40AH00BK



Taser Holster Black
Part # 40TA00BK



Modular Vest
Taser Holster Black
Part # 40TA01BK



Pistol Bunji
Retention Kit
Part # 40BR00BK



Omega VI
Assault Holster
Part # 40QD00BK



Omega VI Holster
Airborne
Part # 40QD02BK



SOCOM MK-23
w/ L.A.M. Black
Part # 40SOC1BK



Spec. Ops Holster
Part # 40XP00BK-OD-LEFT



Omega Drop-Leg
Extender Black
Part # 56DLE1BK



Universal Spec-ops
Shoulder Harness/holster
Part # 40SH04BK



Taser Universal
Harness/Holstr Black
Part # 40SH05BK



Universal Fit
Holster - Black
Part # 60WFUHBK



Bts Modular
Vest (Old 990527) Black
Part # 40VH00BK



Omega Drop Leg Extender
W/2 Quick Release Black
Part # 56DLE2BK



Omega Leg Strap 1.5
Part # 40LS03BK



Omega Leg Strap 2
Part # 40LS02BK



Gen-4 Molle System
Plate Carrier Harness
Part # 37CL33ALL



Gen-4 Molle
System LBE Harness
Part # 37CL40ALL



Molle Hydration
System Carrier
Part # 37CL37ALL



Gen-4 Molle
Commando Recon Vest
Part # 37CL01ALL



GEN 4 Molle
Omega Vest
Part # 37CL36ALL



Gen-4 Molle
Drop Leg Platform
Part # 37CL39ALL



SRTSUPPLY
Equipping You to Master your World

TACTICAL ACCESSORIES

BLACKHAWK!



Universal Fit
Holster - Black
Part # 60WUHBK



Attache Case Pouches
Part # 61AC-Pouches

Have the inside of your Attache'
organized and professional!



CQC Concealment
Vest Holster
Platform
Part # 411500BK



Straps w/Side
Release (Pkg. of 2)
Part # 90AS01BK,DE,OD



BlackHawk Executive
Attache Case
Part # 61AC02-ALL



ID/Credit Card
Holder Black
Part # 90CC01BK



Tactical Pistol
Lanyard/Swivel
Part # 90TPL2BK



Attachment SYS
QK Disconnect Kit 4PC
Part # 90FA02BK,OD



Forearm Mag /
Flashlight Holder
Part # 51FA00BK



Silent Zipper Pulls Black
(pkg of 10)
Part # 98ZP10BK



550 Cord - 100'
Part # 98M551BK,DE,OD



Alice Clip (4 Pack)
Metal Black
Part # HMA04



LBE Bands
Set of 6
Part # 90LBE1BK



Bunji Cords (Pkg. 2)
Part # #98BC24-36BK



Duty Key Holder Black
Item #52DGKHBK



Elastic Keepers
Packaged (10)
1 Black
Part # 90EK10BK



Key Ring 3/4 Black
Part # 98BKR1BK



Cordlock
(Set of 4)
Part # 98HP00BK



Cinch Accessory
Straps (Pkg. of 2)
Part # 90AS04BK,OD



Side Release
Buckle - 1.5 (set of 2)
Part # 98HP06BK



SRTSUPPLY
Equipping You to Master your World

TACTICAL ACCESSORIES



Ammo Cheek Pad
Rifle (5) Black
Part # 90CP02BK,OD



Tactical Cheek Pad
Part # 90CP04BK



Ammo Cheek Pad
Rifle (5)**IVS* Black
Part # 90CP05BK



Buttstock Mag Pouch
M4 Collapsible
Part # 52BS17BK



Cheek Pad for Rifles
Part # 90CP00BK



Scope Protector
Padded
Part # 62SP00BK-ALL



Tactical Cheek Pad
Adjust HawkTex
Part # 90CP01BK



Scope Protector
Padded Crown Protect
Part # 62SP02BK-ALL



SOCOM Pistol Case
Part # 66SS00BK



Shotgun Cases
Part # 64SG34-51BK



Buttstock Shell
Hldr-Pouch TYP Shot Shell
Part # 52BS02BK



Trijicon Scope
Protector Black
Part # 62SP03BK



Buttstock Mag Pouch
W/ Adj Lid Black
Part # 52BS16BK



Discreet Weapons Cases
Homeland Sec. Part # 65DC32BK



Long Gun Pack Mat
Part # 20PM03



Long Gun Drag Bags
Part # 20DB01BK
20DB01DE
20DB01OD



Rifle Cases
Part # 64RC29-46BK



Padded Weapons Case
Part # 61PW00BK-ALL



Scoped Rifle cases
Part # 64SR44-51BK



Duty Keepers w/ Grom
Set of 4 Black
Part # 90DK00BK



Duty Belt Keepers
Part # 90BK00BK



Duty Belt
Part # 41DB00BK-03



Military Web Belt Extender
Part # 41WBE2BK-OD



Padded Patrol Belt
Part # 41PBT1BK-3



Universal BDU Belt
Part # 41UB01BK,DE,OD



Duty Pants Belt
Part # 41DP36BK-50



Enhanced Military
Web Belt
Part # 41WB02OD, 41WB02BK



CQB Riggers Rescue Belt
Part # 41CQ01BK-02


SRTSUPPLY
 Equipping You to Master your World

HELI-VAC SYSTEMS



COLUMBIAN ROPE HELI-VAC™ SYSTEMS

Columbian's HELI-VAC™ Systems provide efficient and safe methods for infiltrating and evacuating special operation personnel to/from point targets. Low stretch fibers and Columbian's Pli-Moor® construction reduce rope kinking and afford fast, fully controlled descent and safe, sure ascent.

*Known to some military facilities as "Fast Rope®."

HELI-VAC™ FAST ROPE® INFILTRATION SYSTEM

This rope is designed for easy handling, sure grip and minimum stretch (working elasticity) by utilizing a unique blend of synthetic fibers and Columbian's Pli-Moor construction.

Eight strand Pli-Moor firm lay synthetic line is specially designed to enable personnel to infiltrate from helicopters without having to be lowered by small lines. This rope can also be used to evacuate from offshore platforms, structures, etc.

Available with eye splice, Figure "A", or High-tech hardware termination, Figure "B".

Figure "A" - Factory installed 4 to 6 inch full eye splice affording as much as 85% of fast rope tensile strength.

Figure "B" - Heli-Vac High-tech termination hardware. Factory installed and tested to over 9,000 lbs. break strength.

HELI-VAC™ INFILTRATION SYSTEM M/P (Olive Drab) 8 Strand Pli-Moor®

EYE SPLICE SYSTEM TYPE

P/N	LGTH	DIA	CIRC	APPROX AVG BREAK STRENGTH
3336672	50'	1-3/4"	5-1/2"	35,000 LBS.
3336670	60'	1-3/4"	5-1/2"	35,000 LBS.
3336671	90'	1-3/4"	5-1/2"	35,000 LBS.
3336673	120'	1-3/4"	5-1/2"	35,000 LBS.

HIGH TECH HARDWARE TYPE

P/N	LGTH	DIA	CIRC	APPROX AVG BREAK STRENGTH
3316662	50'	1-3/4"	5-1/2"	35,000 LBS.
3316660	60'	1-3/4"	5-1/2"	35,000 LBS.
3316661	90'	1-3/4"	5-1/2"	35,000 LBS.
3316663	120'	1-3/4"	5-1/2"	35,000 LBS.

Figure A

Figure B


SRTSUPPLY
 Equipping You to Master your World

FAST ROPE EXTRACTION SYSTEM



HELI-VAC™ FAST ROPE® EXTRACTION SYSTEM*

(THE COMPLETE INFILTRATION/EXTRACTION SYSTEM)

This system affords a unique method to extract multiple personnel efficiently and safely from normally inaccessible or difficult situations. Used also in rescue deployments, it enables the rescuer to descend to the rescue and extract person or persons quickly without time loss.

The Heli-Vac extraction system can also be used as an infiltration system offering the added safety feature of a built-in warning system. When descending personnel reach the upper most white extraction loop they are warned that the system end is near and proper action should be taken to avoid accidents. The remaining loops give additional warnings. Also the white color of the extraction component aids in visibility when the lower end of the system is on the ground.

Available with eye splice, Figure "A", or High-tech hardware termination, Figure "B". See other side.

HELI-VAC™ EXTRACTION SYSTEM

M/P (Olive Drab) 8 Strand Pli-Moor®

EYE SPLICE SYSTEM TYPE				APPROX AVG BREAK STRENGTH
P/N	LGTH	DIA	CIRC	
3346692	50'	1-3/4"	5-1/2"	35,000 LBS.
3346690	60'	1-3/4"	5-1/2"	35,000 LBS.
3346691	90'	1-3/4"	5-1/2"	35,000 LBS.
3346693	120'	1-3/4"	5-1/2"	35,000 LBS.

HIGH TECH HARDWARE TYPE				APPROX AVG BREAK STRENGTH
P/N	LGTH	DIA	CIRC	
3326682	50'	1-3/4"	5-1/2"	35,000 LBS.
3326680	60'	1-3/4"	5-1/2"	35,000 LBS.
3326681	90'	1-3/4"	5-1/2"	35,000 LBS.
3326683	120'	1-3/4"	5-1/2"	35,000 LBS.





SRTSUPPLY
Equipping You to Master your World

HELI-VAC SYSTEMS



Duty Key Holder (Dkh)



Duty Baton Holder (Dbh)



Duty Flashlight Holder (Dfh)



Duty Mag Lite Carrier (Dmlc)



Duty Cuff Pouch (Dcp)



Open Top Collapsible Baton Holder (Cbh)



Duty Flashlight Holder With Flap (Dfh-w/flap)



Duty Flashlight Pouch (Dflp)



Radio Pouch (Rp-ftl-a)



Duty Mace Holder (Dmh-4)



Duty Cuff Pouch-2 (Dcp-2)



Duty Mag Pouch Fb Style (Dmp-2-fb)



Duty Mag Pouch-3 (Dmp-3)



Duty Mag Pouch (Dmp)



Duty M-16 Magazine Pouch (Dmp-fb-m16)



Duty Collapsible Baton Pouch (Dcbp)



Duty Mag Pouch 3 Well Adjustable Flap (Dmp-3a)



Duty Mag Pouch Tension Control (Dmp-tcs-2)



Duty Mag Pouch Tension Control (Dmp-tcs-3)



Duty Mag Pouch Vertical Or Horizontal (Dmp-vh)



Duty Mag Pouch Fb Style (Dmp-3-fb)



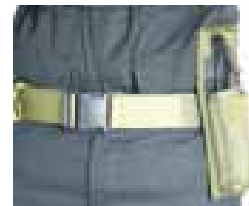
Duty Shotgun Shell Pouch (Dssp-12)



Duty Shotgun Shell Pouch (Dssp-20)



Duty Shotgun Shell Pouch (Dssp-6)



Sunglass Case (Sgc)



Duty Single Mag Pouch (Dsmp/ks)



EAGLE INDUSTRIES



Duty Mag Pouch M-16 (Dmp-m-16)

Duty Keepers (Set Of Four) (Dk)





SRTSUPPLY
Equipping You to Master your World

TACTICAL HOLSTERS



Undercover Ankle
Holster
Part # UAH



Flat Belt Holster
Part # FBH-2



High Ride Break
Part # HRBF-W/O-MP



High Ride Break
Front Holster
Part # HRBF-W-MP



High Ride
Bodyguard Holster
Part # HRBG



Angle Pull Holster
Part # APCH-W/MP



Concealment
Shoulder Holster
Part # CSH



Concealment
Shoulder Holster
Part # CSH-W/MP



Horizontal Pull Holster
w/ Mag Pouch
Part # HP-W-MP



Duty Holster
Part # DH



SAS MK III Holster
Part # SAS-MKIII



Duty Holster
High Ride
Part # DH-HRM



Duty Holster Low Ride
Part # DH-LRM-W-MP



Pants Holster With Thumb
Break And Shirt Guard
Part # ITP-TB-SG



Duty Holster
Mark Vi
Part # DH-MKVI



Pants Holster With
Thumb Break
Part # ITP-W-TB



Smg Shoulder Rig
Part # SMG



Smg Mag Pouches
Part # SMG-MP



Tanker Style Harness
And Mag Pouch
Part # TSAF-W/MP



Universal Special Operations
Holster
Part # SOH-U



Duty Assault Holster
Part # SAS-DAH



SAS MK III Holster
Airborne Style
Part # SAS-MKIII-ABN



SAS MK III Holster
W/ Light Mount
Part # SAS-MKIII-W/LM



SAS MK V Holster Airborne
Part # SAS-MKV-ABN



SAS MKVI Security
Leg Holster
Part # SAS-MKVI



SAS MK V Holster
Part # SAS-MKV



Airborne
Law Pouch
Part # ABL



SRTSUPPLY
Equipping You to Master your World

ACCESSORIES



A-iii Medical Pack
Vertical Pouch (A-iii-mp-vp)
A-iii Medical Pack
Horizontal Pouch
(A-iii-mp-hp)
A-iii Medical Pack
Replacement Pouch
(A-iii-mp-1pm)



Alice Back Pack
Quick Attach Waist Pad
(Af-qawp)



Internal Pack Frame For
The A-iii-p-ab-l (A-iii-p-ab-l-pf)



Alice Back Pack
Shoulder Straps (Af-ss)



A-iii-pack Non-slip Shoulder
Strap Cover (A-iii-nsc)



Alice Back Pack
Waist Pad (Af-wps)



Rope Bag
(Rb)



Sp-20 Shoulder Pad
(Sp-20)



Goggle Cover
With Lining (Gc-l)



Instructor's Emergency
Rappelling Belt (Ier)



Neck Id Wallet
(Nidw)



Hanging Travel
Kit (Htk)

Rope Bag
(Rb-lge)



Rope Bag
Round W/slotted
Webbing
(RB-RSW)



Goggle Cover
Unlined. (Gc-u)



A-iii Pack Frame
(A-iii-pf)



A-iii Pack Frame
Large (A-iii-pf-l)



Internal Pack Frame
For The Becker Patrol
Pack. (Bpp-pf)



Internal Frame For
The Becker Patrol Pack
Large. (Bpp-pf-l)



EDGE GUARD (EG-1)



Royal Robbins 5.11 Tactical
Accessories
(Baton Holder). (Rr-vbh)



Royal Robbins 5.11 Tactical
Accessories
(Handcuff Case). (Rr-vcc)



Royal Robbins 5.11 Tactical
Accessories
(Holster). (Rr-vh)



Royal Robbins 5.11
Tactical Accessories
(Double Mag Pouch).
(Rr-vm)



EAGLE INDUSTRIES



Police Patch - Small (Pps)



SRTSUPPLY
Equipping You to Master your World

ACCESSORIES



Instructor's Emergency Rappelling Belt w/hook and Loop Part # IER-1



Instructor's Emergency Rappelling Belt w/hook and Loop Part # IER-2



Shotgun Shell Belt Part # SS-B-25L



Nylon Belt With Fastex Buckle Part # BF-1



Shotgun Bandoleer Part # BDL-56



Shooter's Stock Pack Rifle, Black Part # 350000



Shooter's Stock Pack Rifle, Olive Drab Part # 350001



Shooter's Stock Pack Rifle, Camouflage Part # 350002



Shooter's Stock Pack Part # 350007



Shotgun Stock Pack Olive Drab Part # 350008



Shotgun Stock Pack Camouflage Part # 350009



Padded Scope Cover w/ Crown Cover Part # PSC-W/CC



Stock Shotgun Shell Carrier Part # SSSC-QTR



Gunstock Ammunition Carrier Flap Part # GSAC-W/FLAP



M-16 Flashbang Pouch Part # M-16FB-SP



Padded Scope Cover Part # PSC



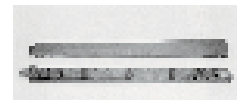
Battle Dress Uniform Belt (Bdu)



Duty Belt Part # DB



Duty Pants Belt Part # DPB



Military Web Belt Pad Part # MWP-S



Gunstock Ammunition Carrier Part # GSAC



Parachutist's Drop Bag Part # PDB-SPR/DR-W-HW



Standard Pro Shooter Bag and Insert Part # PS-1014



Patrolman's Bag w/Cuff and Mag Pouches Part # PB-2



Active Shooter's Bag Part # ASB



Medical Bag Mb-1101



Cargo Bag - Large Outer Bag Only Cdb-jc-b



Commercial Dive Bag Cdb-12-1001



Deluxe Pro Shooter Bag And Insert Dps-1014



Gadget Bag - Large Gb-1001



SRTSUPPLY
Equipping You to Master your World

WEAPON CASES



RIFLE CASE
Part # RC-28AK



RIFLE CASE
Part # RC-3408



RIFLE CASE
Part # RC-4108



RIFLE CASE
Part # RC-4608



SCOPED RIFLE CASE
Part # SR-49BP



RIFLE CASE
Part # RC-3223



RIFLE CASE
Part # RC-36AK



RIFLE CASE
Part # RC-4123



SCOPED RIFLE CASE
Part # SR-44



SCOPED RIFLE CASE
(SR-46)



DISCREET CASES
Part # DC-22



DISCREET CASE-26
Part # DC-26



DISCREET CASE
Part # C-29



DISCREET CASES
Part # DC-16



DISCREET CASE-31
Part # DC-31



DISCREET CASE
Part # DC-CAR-15



SOFT-HARD DISCREET CASE
Part # DC-HC28



M-16/AR-15
Part # DC-M16/AR15



DRAW BAG
Part # RGBG



HYBRID SNIPER RIFLE COVER
Part # HSRC



HYBRID SNIPER RIFLE CARRIER
-BINOCULAR POUCH
Part # HSRC-BP



HYBRID SNIPER
RIFLE CARRIER
Part # HSRC-TP



PISTOL POUCHES
PP10X8



PISTOL POUCHES
PP12X8



PISTOL POUCHES
PP14X8





SRTSUPPLY
Equipping You to Master your World

ACCESSORIES

EAGLE *Made in USA*
Quality by Design!



Ranger H-harness
Part # RHH



Phillip's Rappelling
Harness
Part # PRH



Instructor's
Rappelling Harness
Part # IRH



Ranger H-harness
Camelbak® Compatible
Hybrid Model.
Part # RHH-CC-H



MILITARY LBE
SUSPENDERS
Part # LB-2S



CHEST RADIO POUCH
DELUXE
Part # CRH-D



CHEST POUCH
Part # SF30-AK
Part # CP-SF-30AK



DUTY EVIDENCE POUCH
Part # DEP



DUMP MAG POUCH,
SAS STYLE
Part # SAS-DMP



LARGE DUTY BELT WITH
SECURITY BUCKLE
Part # DBL-SB



ADJUSTABLE RAPPELLING
HARNES
Part # RAP



LOAD BEARING VEST
AIR RESCUE VEST
Part # LBV-AR-40MM



LOAD BEARING VEST
MODULAR
Part # LBV-M



LOAD BEARING VEST
ENHANCED
Part # LBV-USA-E



INSTRUCTOR'S EMERGENCY
RAPPELLING BELT W/SPECIAL
ADAPTOR
Part # IER-2A



LOAD BEARING VEST
Part # LBV-USA



TAC-V3 ASSAULT VEST
Part # TAC-V3



TAC-V2 VEST
Part # TAC-V2



TAC-V1-NU VEST
Part # TAC-V1-NU-B



TAC-V1-NU VEST
Part # TAC-V1-NU-A



TAC-V1-NU VEST
Part # TAC-V1-NU



GAS MASK POUCH
FOR VEST
Part # TAC-V1-N-GMP



TAC-V1-N VEST B
Part # TAC-V1-N-B



TAC-V1-N VEST A
Part # TAC-V1-N-A



TAC-V1-N VEST
Part # TAC-V1-N



TACTICAL MEDICAL
VEST
Part # TAC-V1-MV



SNIPER VEST
Part # TAC-SVD



SRTSUPPLY
Equipping You to Master your World

PERSONAL PROTECTIVE EQUIPMENT (PPE)



VERTEX VENT
Ventilated helmet for
work at height and rescue



ANNEAU
Stitched polyamide
webbing sling



SET ROLL MODULE
Articulated
protector w/ rollers



I'D®
Self-braking descender
belay device
w/ anti-panic function



NEWTON FAST JAK
Rapid intervention
fall-arrest harness



AM'D
Asymmetric carabiner



**ATTACHE
SCREW-LOCK**



Compact pear-shaped
carabiner

FREINO



Carabiner w/ braking spur
for descenders

FALCON
Sit harness



Ref.# :C38

Rescue triangle
w/ shoulder straps



Ref.# :C80BR



HUIT
Figure-8
descender



SRTSUPPLY
Equipping You to Master your World



UNIFORM RAPPEL BEL
Part # 450



**LIGHT-WEIGHT
ASSAULT HARNESS**



RESCUE HARNESS
Part # 310



**RESCUE
LADDERS**
6 Steps
Part # 532



Tactical - 75ft
Part # 454

TACTICAL RAPPEL HARNESS
w/ "D-Ring Tie-in"



Part # 319



MONGOOSE
Screw Gate:
Part # 1140

GATOR



Bent Gate:
Item #1115



GATOR
Straight Gate:
Part # 1110



SRTSUPPLY
Equipping You to Master your World



RIGGING EQUIPMENT



PMI doesn't just follow the trends when it comes to life safety. We create them. For nearly 25 years PMI has made the life safety rope you like best for recreation and for professional use. Our specialty is engineering the characteristics that you want and need - such as durability, hand, dry treatment, and force absorption - into the ropes that we manufacture in our ISO Quality approved plant.

As an industry leader, PMI also offers quality products from SMC and other manufacturers. We take the process of selecting products for supporting cast very seriously, so even if a product doesn't have

our name on it you can be sure that we've put it through the same kinds of analysis we do on our own gear.

Professionals in the field look to PMI for solutions, and PMI steps up to the plate. We can help you with your product needs, technical questions, standards information, and more.

PMI Classic Static Rope

The original, Classic Static rope. PMI Classic's 16 carrier construction is preferred over 32/48 carrier designs for its higher quality and longer wearing characteristics. Our continuous, block creel parallel nylon fiber core construction means you can rely on low stretch and no spin. PMI Classic Static meets the stringent requirements of NFPA and Cordage Institute standards.



Rigging Hardware

SMC Large & Extra Large Steel Locking D



Large size locking carabiner developed by SMC especially for the needs of the fire and rescue communities. Available in several different metal finishes, as well as in both NFPA (Class G) and non-NFPA versions. Black zinc coated models are ideal for tactical operations and

stainless steel model is best for corrosive environments. Large gate opening fits easily over litter rails.

PMI Mate Autolock



A triple-action auto-locking gate carabiner with a smooth, high quality profile. PMI's keywords for our new 11mm stock aluminum Mate carabiner are Reliability and Quality. At 28kN and only 74 grams, there's no excuse for using a lesser performing carabiner.

Personal Escape 8



Compact size and light weight, this tiny figure 8 from SMC works well on single or double ropes (7.5mm as well as single ropes up to 11mm diameter).

SMC Mountain D



Oversized non locking D, featuring the same frame as the Locking D. An easy handling carabiner for all-round use.

Straight 8



The preferred Figure 8 design by SMC. Carabiner hole may be used as a sticht place.

