

**Experts In Home Cleaning™**

# **CLEANview® LIFT-OFF®**

## **USER'S GUIDE**

10N4, 22K7 SERIES 220-240V

**2 Thank You**

**3 Safety Instructions**

**4-5 Product View**

**6 Assembly**

**7-12 Operations**

**13-15 Maintenance and Care**

**16 Troubleshooting**

**17 Accessories**

**18 Replacement Parts**

**19 Warranty**

**20 Consumer Services**



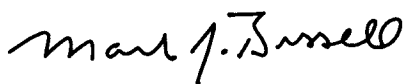
## **Thanks for buying a BISSELL CleanView® Lift-Off®**

We're glad you purchased a BISSELL CleanView® Lift-Off®. Everything we know about floor care went into the innovative design and construction of this complete, high-tech home cleaning system.

Your BISSELL CleanView® Lift-Off® is well made, and we back it with a limited five year warranty. We also stand behind it with a knowledgeable, dedicated Consumer Services department, so, should you ever have a problem, you'll receive fast, considerate assistance.

My great-grandfather invented the floor sweeper in 1876. Today, BISSELL is a global leader in the design, manufacture, and service of high quality homecare products like your BISSELL CleanView® Lift-Off®.

Thanks again, from all of us at BISSELL.



**Mark J. Bissell**  
Chairman, President & CEO

# IMPORTANT SAFETY INSTRUCTIONS

When using an electrical appliance, basic precautions should be observed, including the following:

## READ ALL INSTRUCTIONS BEFORE USING YOUR DEEP CLEANER.

Always connect to a properly Earthed outlet. Unplug from outlet when not in use and before conducting maintenance or troubleshooting.

### **WARNING: To reduce the risk of fire, electric shock, or injury:**

- Use indoors only
- Do not immerse; use only on surfaces moistened by cleaning process
- Do not leave machine when it is plugged in
- Do not service machine when it is plugged in
- If the supply cord is damaged, it must be replaced by the manufacturer or its service agent in order to avoid a hazard
- Do not use machine if it has been dropped, damaged, left outdoors or dropped into water
- Do not pull or carry by cord, use cord as a handle, close door on cord, pull cord around sharp corners or edges, run appliance over cord, or expose cord to heated surfaces
- Do not carry the appliance while in use
- Do not unplug by pulling on cord; unplug by grasping plug not the cord
- Do not handle plug or appliance with wet hands
- Do not put any object into appliance openings, use with blocked opening or restrict air flow
- Do not expose hair, loose clothing, fingers or body parts to openings or moving parts
- Do not pick up hot or burning objects
- Do not pick up flammable or combustible materials (lighter fluid, petrol, kerosene, etc.) or use in the presence of explosive liquids or vapours
- Do not use appliance in an enclosed space filled with vapours given off by oil base paint, paint thinner, some moth proofing substances, flammable dust, or other explosive or toxic vapours
- Remove plug from electrical outlet before cleaning or maintaining the appliance

- Not intended for use by persons (including children) with reduced physical, sensory or mental capabilities, or lack of experience and knowledge, unless they have been given supervision or instruction concerning use of the appliance by a person responsible for their safety
- Young children should be supervised to ensure that they do not play with the appliance
- Do not pick up toxic material (chlorine bleach, ammonia, drain cleaner, petrol, etc.)
- Do not modify the Earthed plug
- Do not use for any purpose other than described in this User's Guide
- Use only manufacturer's recommended attachments
- Use only cleaning products formulated by BISSELL for use in this appliance to prevent internal component damage
- Keep openings free of dust, lint, hair, etc.
- Keep appliance on a level surface
- Turn off all controls before unplugging
- Be extra careful when cleaning stairs
- Pay close attention when working around children

## SAVE THESE INSTRUCTIONS FOR FUTURE USE

This model is for household use only.

### **WARNING:**

This appliance must be Earthed.

## IMPORTANT

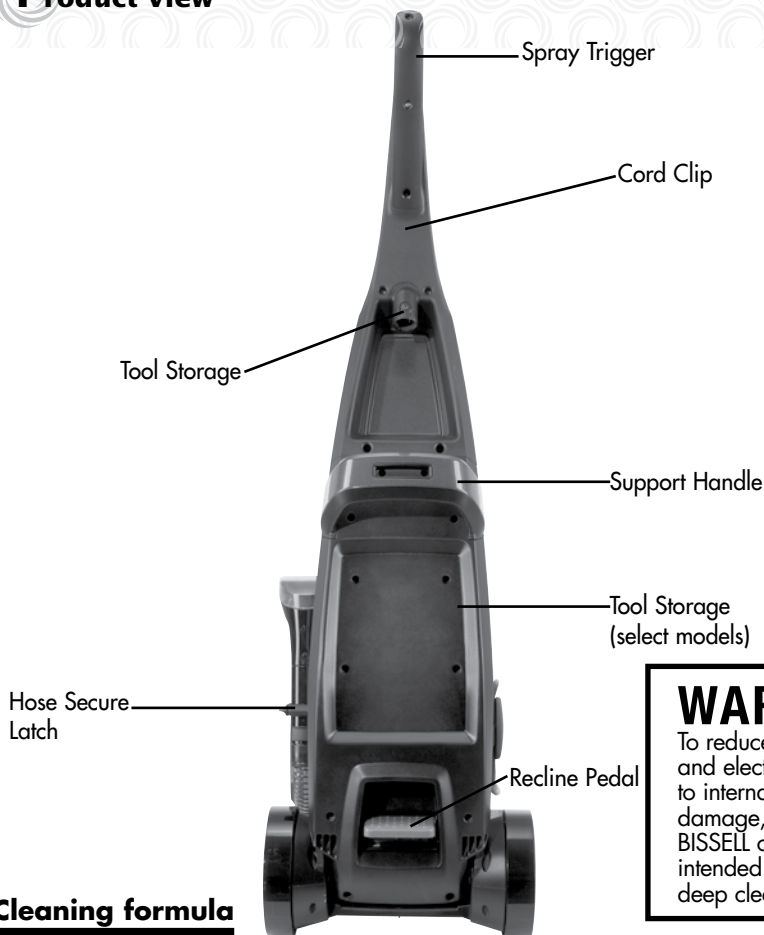
FOR OPERATION ON A 220-240 VOLT A.C. 50/60 Hz POWER SUPPLY ONLY.

If your appliance is fitted with a nonrewireable BS 1363 plug it must not be used unless a 13 amp (ASTA approved to BS 1362) fuse is fitted in the carrier contained in the plug. (Spares may be obtained from your BISSELL supplier). If for any reason the plug is cut off, it must be disposed of, as it is an electric shock hazard should it be inserted into a 13 amp socket.

## Product view



## Product view



### **WARNING:**

To reduce the risk of fire and electric shock due to internal component damage, use only BISSELL cleaning formulas intended for use with the deep cleaner.

## **Cleaning formula**

Keep plenty of genuine BISSELL 2X cleaning formula on hand so you can clean and protect whenever it fits your schedule. Always use genuine BISSELL deep cleaning formulas. Non-BISSELL cleaning formulas may harm the machine and will void the warranty.



1.5 L  
2X Wash  
& Protect  
Professional  
Formula w/  
Scotchgard™  
Protector  
**#81L5-E**



1.5 L  
2X Wash &  
Protect Pet  
Stain & Odour  
Formula w/  
Scotchgard™  
Protector  
**#66W9-E**



1.5 L  
2X Wash &  
Protect Fresh  
Fragrance  
Formula w/  
Scotchgard™  
Protector  
**#92F4-E**



1.5 L  
2X Wash  
& Protect  
Spring Breeze  
Fragrance  
Formula w/  
Scotchgard™  
Protector  
**#12W4-E**



1.5 L  
2X Wash  
& Protect  
Lavender  
Fragrance  
Formula w/  
Scotchgard™  
Protector  
**#33D2-E**



473 mL  
2X Hard  
Floor  
Solutions  
**#56L9-E**



651 mL  
Tough  
Stain  
Precleaner  
**#0400-E**

**Note: Additional BISSELL formula options may be available at your local retailer.**

# Assembly

**Your CleanView® Lift-Off® comes in two easy to assemble components:**

1. Upper handle
2. Portable spot cleaner/Base

**The only tool you will need to assemble your cleaner is a Phillips screwdriver.**

1. Slide upper handle onto base
2. Screw the four included screws into the marked holes.

**Note: two of the holes are located underneath the support handle indicated by graphics. Angle screwdriver to secure into place.**

3. Wrap power cord around Quick Release Cord Wrap.
4. Wrap flex hose around the hose wrap and secure with hose secure latch.
5. Snap attachment(s) into the back of unit.

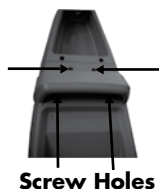
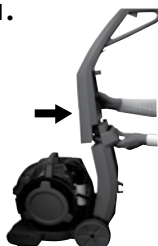
1.



2.



1.



2.



## WARNING:

Do not plug in your cleaner until you have completely assembled it per the above instructions and are familiar with all instructions and operating procedures.

# Operations

## **Special features**

### **Innovative cleaning technology**

This innovative deep cleaner offers two machines in one. The upright deep cleaner uses the power of heat, brushes and cleaning formula to get deep down dirt for a maximum clean. The portable spot cleaner detaches to clean tough spots and stains and hard to reach areas.

### **Hot water heater**

This deep cleaner features a patented built-in hot water heater which will heat the room temperature tap water you put in to safely optimize cleaning effectiveness. The heater temperature is limited to prevent carpet damage. The heater automatically turns on when you turn the machine on. This operates only in upright cleaning mode.

### **Scotchgard™ Protector**

Carpet protection applied at the mill typically wears down over time from heavy foot traffic and everyday cleaning, including deep cleaning. To help restore this important protection, only BISSELL offers deep cleaning formulas with Scotchgard protector. This offers extra protection against dirt and tough stains to keep your carpets looking good longer.

### **Microban® antibacterial protection**

Microban antibacterial protection helps prevent the growth of harmful common household bacteria including E. coli, Salmonella and Staph. a. It helps to keep the unit fresher and cleaner between uses.



Pedal Graphic

### *Tip:*

For easy carrying, grab the carry handle portable spot cleaner and balance with the handle on the back of the machine.



# Operations

## Before you clean

1. Move furniture to another area if cleaning an entire room (optional).
2. Vacuum area with a dry vacuum cleaner thoroughly before deep cleaning.
3. Pretreating (optional):

**3a.** Pretreating is recommended to improve cleaning effectiveness for heavily soiled carpet in high traffic areas such as entryway and hallways.

### **3b. BISSELL Tough Stain precleaner**

Spray the BISSELL Tough Stain precleaner formula onto heavy traffic areas, soiled areas or stains.

Allow to penetrate for at least 3 minutes.

Clean as normal, using the deep cleaner in upright mode, following the instructions below.

## **WARNING:**

To reduce the risk of fire, use only BISSELL deep cleaning formula for full size machines in your deep cleaner. Use of cleaning formulas that contain lemon or pine oil may damage this appliance and void the warranty. Chemical spot cleaners or solvent-based soil removers should not be used. These products may react with the plastic materials used in your deep cleaner causing cracking or pitting.

**3b.**



## **ATTENTION:**

Some Berber carpets have a tendency to fuzz with wear. Repeated strokes in the same area with an ordinary vacuum or deep cleaner may aggravate this condition.

## Upright cleaning mode

### Filling formula & water tank

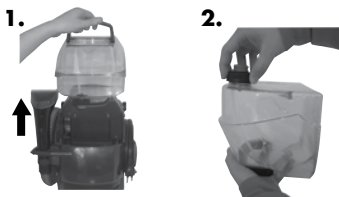
1. Remove tank from the base of the machine by lifting up tank carry handle.

**Note: This tank was designed with a flat bottom so it can be easily filled.**

2. Unscrew the black cap and remove bottle insert.
3. Fill tank with room temperature tap water to the water fill line. Add 60 mL of BISSELL 2X formula to the tank.
4. Replace the bottle insert in the tank and tighten the black cap. Replace the tank on the deep cleaner.

## Cleaning

1. Plug into a proper outlet and press the power button. Allow 1 minute for the hot water heater to warm-up before cleaning.
2. While pressing the spray trigger, make one slow forward wet pass and another one back.





# Operations

## Upright cleaning mode continued

### Cleaning continued

3. Release the spray trigger and make one slow forward and backward pass over the same area. Repeated passes will help aid in dry time.
4. Continue passes until cleaning area is complete.

**Note:** Your machine may be equipped with a circuit breaker that will automatically shut off the brush if a large or loose object is caught in the brush roll. If that happens, be sure to unplug your machine, remove the foreign object, and then plug the machine back in to reset the circuit breaker.

### Empty dirty tank

1. When the dirty tank reaches the "FULL" line on the tank it is time to empty.
2. Remove dirty tank and carry to a utility sink, toilet or outside (where you will dispose of the dirty water).
3. To unlock the dirty tank lid, rotate handle over the back of the tank. Remove lid and pour out dirty water. Rinse out dirty tank to remove any debris.
4. Replace top of tank, and rotate the handle forward to lock in place on front of tank.

### Cleaning your machine

1. Flush out machine of any remaining residual solution.

Fill the formula & water tank with room temperature tap water and turn on your machine.

Recline handle and press the spray trigger for about 15 seconds while making forward and backward passes on carpet. Continue without pressing the spray trigger until there is no more water being suctioned up.

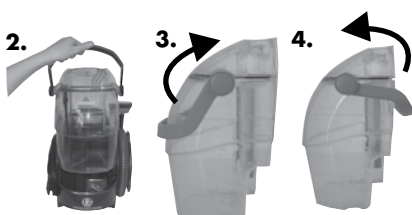
Turn off the machine and wrap the power cord. Make sure the dirty tank and the formula & water tank are emptied, rinsed, and dried before the next use.

Before you replace tank, clean all debris from red filter screen.

**CAUTION:**  
Do not overwet. Take care not to run over loose objects or edges of area rugs. Stalling brush may result in premature belt failure.

### Tip:

Make only one trip to the sink by removing the entire portable cleaner. Fill and empty in the same trip.



**WARNING:**  
To reduce the risk of fire, electric shock, or injury, turn power OFF and disconnect plug from electrical outlet before performing maintenance or troubleshooting.

### Tip:

For best results empty, rinse and dry both tanks before storing.

# Operations

## Upright cleaning mode continued

### Cleaning your machine continued

2. Rinse front nozzle of any dirt and debris.

Remove portable spot cleaner from the base of the machine.

Unscrew three screws with Phillips screw driver and remove nozzle.

Rinse nozzle out at the faucet.

Place back onto the machine by hooking the tabs into the holes on the bottom sides of the machine. Secure with screws.

3. The inside of the end caps can be wiped out with a clean paper towel, or for a more thorough clean, the end caps can be taken off and rinsed clean.

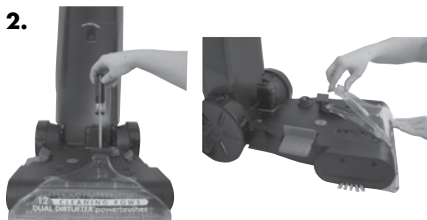
4. Any loose hair or debris can be pulled from the brush rolls and thrown away. For a more thorough clean, follow directions on page 15 for removal of brush rolls. Your machine is now ready to be stored.

**Note: Store cleaner in a protected, dry area. Since this product uses water, it must not be stored where there is a danger of freezing. Freezing will damage internal components and void the warranty.**



## WARNING:

To reduce the risk of fire, electric shock or injury unplug from outlet before servicing.



## Tip:

Let all parts dry completely and replace onto machine.

# Operations

## Portable spot cleaning mode

### Preparing the machine

1. Step on the portable spot cleaning pedal to release the portable spot cleaner.
2. Release flex hose by twisting the hose secure latch clockwise. Unwrap flex hose completely.
3. Attach the desired tool to the hose grip until it snaps together. Make certain the tool is securely attached.
4. Twist the Quick Release cord wrap clockwise to unwrap the power cord completely and plug into grounded outlet.

### Filling tank

1. Follow the instructions for filling the tank in the upright cleaning mode section on page 8

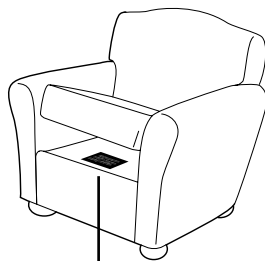
### Cleaning with Tools:

**IMPORTANT! If using to clean upholstery, check upholstery tags. Check manufacturer's tag before cleaning. "W" or "WS" on the tag means you can use your CleanView® Lift-Off® if the tag is coded with an "X" or an "S" (with a diagonal stripe through it), or says "Dry Clean Only", do not proceed with any deep cleaning machine. Do not use on velvet or silk. If manufacturer's tag is missing or not coded, check with your furniture dealer."**

1. Hold the tool approximately 2.5 cm above the soiled surface. Press the spray trigger to apply the cleaning solution to the soiled area.

**Note: Hold end of hose below the tank water level to help prime the portable spot cleaner.**

2. Using the brush on the tool, gently scrub the area to be cleaned.
3. Apply downward pressure on the tool and pull it toward you. The suction will remove the dirt and cleaning solution. Continue until no more dirt can be removed.



Manufacturer's tag

## IMPORTANT

Check for colourfastness in an inconspicuous place. If possible, check upholstery stuffing. Coloured stuffing may bleed through fabric

# Operations

## **Portable spot cleaning mode continued**

### **Cleaning with Deep Reach™ Tool (select models only)**

1. Set tool on soiled surfaces and press the spray trigger to spray solution onto the soiled area to be cleaned.
2. Slowly move the tool back and forth over the soiled surface, keeping the tool in contact with the carpet.
3. Release spray trigger and move tool slowly over the soiled area to suction up water and dirt.
4. Continue to clean the area, working in small sections, until no more dirt can be removed.

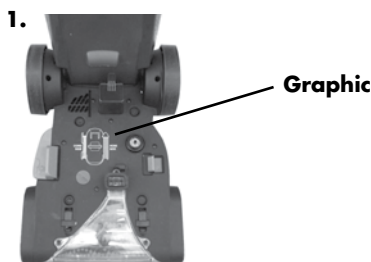


### **Empty dirty tank**

**Follow the instructions under Empty dirty tank section on page 9 of the Upright cleaning mode section.**

### **Replacing portable machine on base**

1. Align the product as the graphic shows, with the cord side on the left and hose side on the right.
2. Push down the portable spot cleaner until you hear it click securely into place. Test the fit by pulling up on the carry handle to make sure it is secure.



### **Cleaning portable machine**

1. Remove and rinse the tools in clean, running water. Dry and replace in the tool storage provided.
2. It is recommended that you suction clean room temperature tap water from a bowl to rinse out the hose. Then lift end of hose and stretch out to ensure all water is cleared from hose.
3. Coil flex hose around the hose wrap and secure with latch.
4. Check suction gate and if it appears dirty, follow steps 1-4 under Cleaning Suction Gate on page 13.

# Maintenance and care

## **Machine care (check regularly)**

### **Cleaning suction gate**

**The suction gate automatically diverts air when the portable deep cleaner is detached. This should be checked and cleaned regularly for any dirt and debris.**

1. Step on the pedal and remove the portable spot cleaner. Remove dirty tank.
2. Remove two screws and pull off suction gate door.
3. Wipe suction gate clean and rinse suction gate door.
4. Replace suction gate door and two screws.

### **Cleaning spray tips**

1. Step on the pedal and remove the portable spot cleaner. To remove, push in tab and pull it out.
2. Clean by rinsing under water.
3. Replace by snapping back in.
4. Repeat steps on second spray tip.

### **Cleaning solution filter**

1. Step on the pedal and remove the portable spot cleaner. Remove the red solution filter cap on the base of the machine by inserting a coin or a flat head screw driver into the slot on the top.
2. Turn counter clockwise to unscrew. Set aside.
3. Remove the white filter by the post. Rinse the filter under water.
4. Replace the white filter back into the filter area.

**Note: Make sure the white filter is seated properly before replacing the red solution filter cap.**

5. Replace the red solution filter cap and turn clockwise to tighten.



## **WARNING:**

To reduce the risk of fire, electric shock, or injury, turn power OFF and disconnect plug from electrical outlet before performing maintenance or troubleshooting.

2.



**Suction Gate**

**Spray Tips**



1.



2.

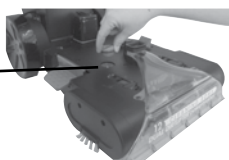


**Solution Filter Cap**

3.



5.



**Filter**

# Maintenance and care

## Small belt removal and replacement (as needed)

**Occasional replacement of one or both belts may become necessary. If that is needed, please follow the instructions below.**

1. Turn off the machine, and unplug it from the outlet. Remove portable spot cleaner.
2. Remove the nozzle by unscrewing three screws on the nozzle cover.
3. Turn the machine on its side.  
**IMPORTANT: with portable spot cleaning pedal facing down.**
4. Remove end cap by unscrewing the 3 screws. Take care not to drop the screws into the unit.
5. Remove 1 silver screw from the pivot arm.
6. Remove pivot arm by gently lifting up.
7. Remove small brush belt.
8. Replace small brush belt, and reverse steps above.
9. Manually rotate brushes by hand to make sure they move freely. May notice a slight resistance from the motor.



## WARNING:

To reduce the risk of fire, electric shock or injury, unplug from the outlet before servicing.



2.



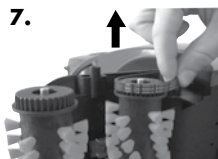
4.



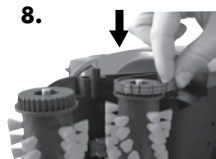
5.



6.



7.



8.

# Maintenance and care

## Brush removal and large belt replacement (as needed)

**Brushes can be removed for cleaning or replacement as needed.**

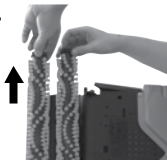
1. Follow small belt removal Instructions on page 14 items 1-7.
2. Remove brush rolls by pulling them off of the metal rods. **Be careful not to lose the small washer at each end of the brush rolls.**
3. Re-attach the large belt to the grooves on the end of the new brush rolls. If the belt is damaged, replace with a new belt.
4. Place cleaned or new brush rolls back onto the rods. Make sure one washer is on each end of the rollers prior to sliding onto the rod. Be sure the brush is seated completely on the rod.
5. Replace small belt over grooves in back roller and metal cog.
6. Replace pivot arm and secure with silver screw.
7. Re-attach end cap by tightening with the (3) black screws.
8. Return front nozzle to front of unit, by latching from underneath and then securing with 3 screws.
9. Follow step number 8 & 9 on page 14. If you have any questions or are having trouble installing or replacing your belt(s) or brushes, please call **BISSELL Consumer Services.**



### **WARNING:**

To reduce the risk of fire, electric shock or injury, unplug from the outlet before servicing.

2.



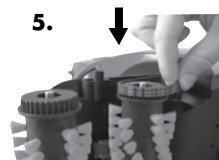
3.



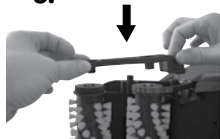
4.



5.



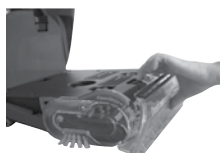
6.



7.



8.



# Troubleshooting

## Built-in heater ready light does not illuminate

### Possible causes

1. The power is not turned ON
2. The portable spot cleaner is not attached completely

### Remedies

1. The power must be ON to activate the heater ready light
2. Make sure the portable spot cleaner is attached  
Push down firmly to check

## Reduced Spray or No Spray

### Possible causes

1. Formula & water tank may be empty
2. Formula & water tank may not be seated completely
3. Pump may have lost prime in portable spot cleaning mode
4. The portable spot cleaner is not attached completely
5. Solution filter may be clogged

### Remedies

1. Refill tank
2. Turn power OFF. Remove and reseal tank
3. Hold end of hose below water level in tank to prime
4. Push down firmly to check connection
5. Follow steps under cleaning filter on page 13

## DirtLifter™ PowerBrush does not turn

### Possible causes

1. The portable spot cleaner is not attached completely
2. The unit is in the upright position
3. Circuit breaker on machine (if equipped) may have tripped
4. The belt is off or broken

### Remedies

1. Make sure the portable spot cleaner is attached.  
Push down firmly to check
2. Brushes only rotate when unit is reclined using the recline pedal
3. Turn the machine OFF and unplug from outlet. Check to see if foreign object is caught in brush roll. Remove object. Plug machine in to reset circuit breaker
4. Turn power OFF and unplug unit from outlet. Follow instructions on pages 14 and 15

## Loss of suction power

### Possible causes

1. Tanks may not be seated properly
2. Nozzles may not be assembled properly
3. The portable spot cleaner is not attached completely
4. Dirty tank has picked up maximum amount of dirty water and has reached full line
5. Formula & water tank is empty
6. Suction gate is open

### Remedies

1. Pick up both tanks and reseal them so it they fit snugly on the unit
2. Unplug the unit. Check to make sure the "lip" of the nozzle is securely hooked into the groove on bottom of Tank (see page 10)
3. Make sure the portable spot cleaner is attached.  
Push down firmly to check
4. Empty dirty tank
5. Check fluid levels in formula & water tank
6. Check to make sure the suction gate is closed. Follow "Cleaning suction gate" instructions on page 13

**Other maintenance or service not included in the manual should be performed by an authorized service representative.**

**Thank you for selecting a BISSELL product.**

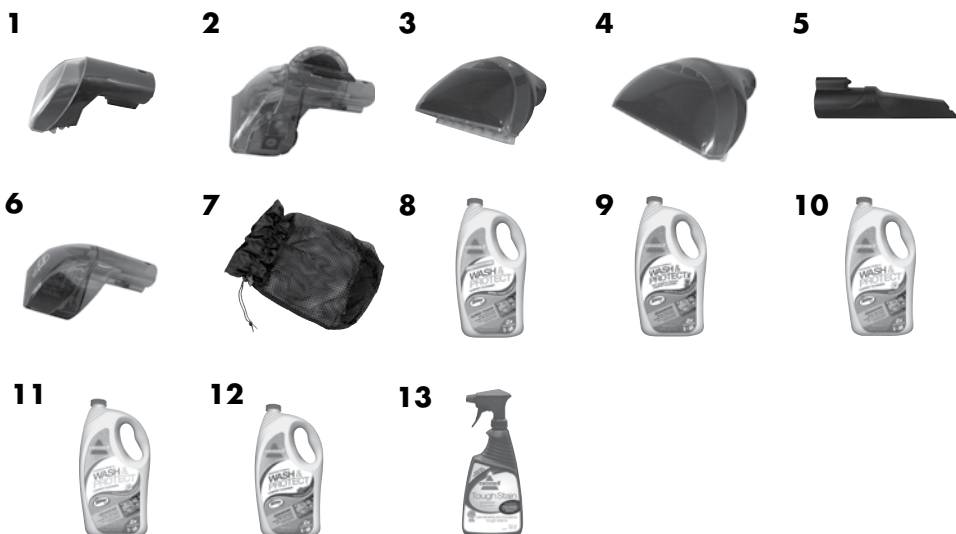
**Please do not return this product to the store.**



## Accessories & formulas

Item	Part No.	Part Name
1	203-6651	3" Tough Stain Tool
2	203-6652	Powered TurboBrush™ Hand Tool
3	203-6653	4" Upholstery Tool
4	203-6654	6" Stair Tool
5	203-7885	Spraying Crevice Tool
6	203-8113	Deep Reach™ Tool
7	310-3040	Mesh Bag
8	81L5-E	1.5 L 2X Wash & Protect Professional Formula w/ Scotchgard™ Protector
9	66W9-E	1.5 L 2X Wash & Protect Pet Stain & Odour Formula w/ Scotchgard™ Protector
10	92F4-E	1.5 L 2X Wash & Protect Fresh Fragrance Formula w/ Scotchgard™ Protector
11	12W4-E	1.5 L 2X Wash & Protect Spring Breeze Fragrance Formula w/ Scotchgard™ Protector
12	33D2-E	1.5 L 2X Wash & Protect Lavender Fragrance Formula w/ Scotchgard™ Protector
13	0400-E	651 mL Tough Stain Precleaner

\*Not all parts are included with every model.



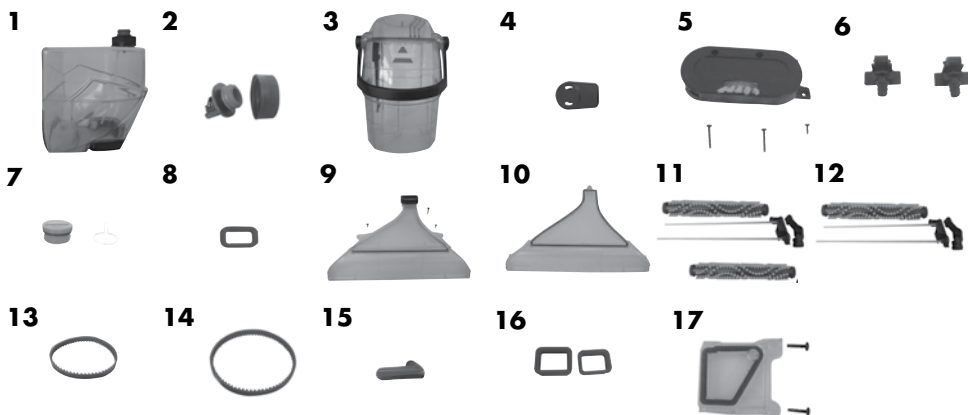
**Note: Additional BISSELL formula options may be available at your local retailer.**

# Replacement parts

**Below please find a list of common replacement parts. While not all of these parts may have come with your specific machine, all are available to you for purchase, if desired.**

Item	Part No.	Part Name
1	203-7893	Formula & Water Tank Assembly (includes cap and insert)
2.	203-6675	Cap and Insert for Formula & Water Tank
3.	203-8102	Dirty Tank Assembly (includes entire tank)
4.	203-7904	Cord Wrap
5.	203-7896	End Caps with Edge Brushes (2 pack, includes screws)
6.	203-7897	Spray Tips Assembly (includes two spray tips)
7.	203-7898	In-line Filter Assembly (includes cap and filter)
8.	203-7901	Nozzle Gasket
9.	203-8103	Nozzle Cover Assembly (includes gasket, nozzle cover, and front nozzle cover)
10.	203-8104	Front Nozzle
11.	203-8105	Brush Assembly (includes 2 brush rolls, 2 axles, and 2 swivel arms)
12.	203-8106	Brush Single Pack (includes 1 brush roll, and 1 axle)
13.	203-7900	Small Brush Belt
14.	203-7899	Large Brush Belt
15.	203-6689	Hose Secure Latch
16.	203-7918	Dirty Tank Gasket Assembly (include both gaskets)
17.	203-7917	Diverter Cover Assembly (includes cover and screws)

**\*Not all parts are included with every model.**



# Warranty - BISSELL CleanView Lift-Off®

This warranty gives you specific legal rights, and you may also have other rights which may vary from country to country. If you need additional instruction regarding this warranty or have questions regarding what it may cover, please contact BISSELL Consumer Services by telephone, or regular post as described below, or contact your local in country distributor.

## Limited Five Year Warranty

Subject to the \*EXCEPTIONS AND EXCLUSIONS identified below, BISSELL Homecare, Inc., will replace (with new or remanufactured components), at BISSELL's option, free of charge from the date of purchase by the original purchaser, for five years any defective or malfunctioning part do to manufacturers defect.

This warranty applies to product used for personal, and not commercial or rental service. This warranty does not apply to fans or routine maintenance components such as filters, belts, or brushes. Damage or malfunction caused by negligence, abuse, or use not in accordance with the User's Guide is not covered.

### For UK inquiries:

Monday - Thursday 9 am — 5 pm

Friday 9 am — 4 pm

### **BISSELL Homecare (Overseas) Inc.**

Ground Floor

226 Berwick Avenue

Slough

Berkshire SL1 4QT

United Kingdom

Telephone: 0844-888-6644

### For all other inquiries:

Monday - Friday 8 am — 4 pm

### **BISSELL Homecare, Inc.**

PO Box 1888

Grand Rapids, Michigan 49501 USA

Telephone: 01-616-453-4451

Fax: 01-616-453-1383

BISSELL HOMECARE INC. IS NOT LIABLE FOR INCIDENTAL OR CONSEQUENTIAL DAMAGES OF ANY NATURE ASSOCIATED WITH THE USE OF THIS PRODUCT. BISSELL'S LIABILITY WILL NOT EXCEED THE PURCHASE PRICE OF THE PRODUCT.

### **\*EXCEPTIONS AND EXCLUSIONS FROM THE TERMS OF THE LIMITED WARRANTY**

THIS WARRANTY IS EXCLUSIVE AND IN LIEU OF ANY OTHER WARRANTIES EITHER ORAL OR WRITTEN. ANY IMPLIED WARRANTIES WHICH MAY ARISE BY OPERATION OF LAW, INCLUDING THE IMPLIED WARRANTIES OF MERCHANTABILITY AND FITNESS FOR A PARTICULAR PURPOSE, ARE LIMITED TO THE FIVE YEAR DURATION FROM THE DATE OF PURCHASE AS DESCRIBED ABOVE.

# BISSELL consumer services

## If your BISSELL product should require service:

Call BISSELL Consumer Services at the numbers below and we will give you the location of a BISSELL Authorized Service Center in your area. If you have questions about your warranty or need replacement parts please contact the numbers below.

### For UK inquiries:

Monday - Thursday 9 am — 5 pm

Friday 9 am — 4 pm

### **BISSELL Homecare (Overseas) Inc.**

Ground Floor

226 Berwick Avenue

Slough

Berkshire SL1 4QT

United Kingdom

Telephone: 0844-888-6644

### For all other inquiries:

Monday - Friday 8 am — 4 pm

### **BISSELL Homecare, Inc.**

PO Box 1888

Grand Rapids, Michigan 49501 USA

Telephone: 01-616-453-4451

Fax: 01-616-453-1383

Or visit the BISSELL website - **[www.bissell.com](http://www.bissell.com)**

When contacting BISSELL, have model number of cleaner available.

Please record your Model Number: \_\_\_\_\_

Please record your Purchase Date: \_\_\_\_\_

**NOTE: Please keep your original sales receipt. It provides proof of purchase date in the event of a warranty claim. See Warranty on page 19 for details.**



**Experts In Home Cleaning™**

©2012 BISSELL Homecare, Inc

Grand Rapids, Michigan

All rights reserved. Printed in China

Part Number 120-4421

Rev 9/11

Visit our website at:

[www.bissell.com](http://www.bissell.com)

Scotchgard is a trademark of 3M

Microban® is a registered trademark of Microban Products Company

