

# Safes, Locks & Personal Protection

## Gun Locks

GunVault.....	1081
Hoppe's .....	1081
Master Lock.....	1081,1082
Mossberg.....	1082
Omega.....	1082
Remington.....	1082
Shot Lock.....	1082,1083

## Gun Safes & Cabinets

Barska .....	1064
Browning.....	1064-1067
Bulldog.....	1067,1068
Cannon Safes.....	1068,1069
G.P.S.....	1069
Gunvault .....	1069-1071
Heritage Safes.....	1071,1072
Lockdown .....	1073,1074

Remington .....	1074
Rhino Safes.....	1074,1075
Sentry .....	1075,1076
Snap Safe.....	1076
Sportlock.....	1076
Stack-On.....	1077-1079
Winchester.....	1079-1081

## Pepper Spray, Tasers & Stun Guns

Mace Brand .....	1083-1085
Pro Mag .....	1085
Ruger.....	1085,1086
Sabre.....	1087-1090
Taser .....	1090

## Padlocks

Master Lock.....	1081,1082
------------------	-----------

Order numbers that are bolded represent new items for this year.

**WARNING: THERE ARE NO WARRANTIES OTHER THAN THE WARRANTIES SUPPLIED  
BY MANUFACTURERS OF THE PRODUCTS WE OFFER FOR RESALE.**

## GUN SAFES &amp; CABINETS



**NEW**

### BARSKA® COMPACT PORTABLE SAFE

• Compact size allows you to store valuables in tight, small spaces or while traveling • Safe can be tethered securely to virtually any fixed object w/included steel cable • 2 emergency back-up keys • Pre-drilled holes allow safe to be mounted into the floor, on a shelf or counter top • Operates on 4 AA batteries (included) • Includes foam liner, removable inner strap & steel cable • Dim.: 7.37"x10.5"x2" • **AX11968:** Retains two digit pin codes; lock out modes • **AX11970:** Fingerprint control can store up to 120 users

Order #	MFG. #	Style	Sugg.Ret.
1923276	AX11968	Digital Keypad	\$89.99
1923277	AX11970	Biometric	169.99



### BARSKA® BIOMETRIC TOP OPENING SAFE

• Fingerprint control can store up to 30 users • Pre-drilled holes allow the safe to be mounted into the floor, on a shelf or countertop • 2 solid steel locking bolts • Hydraulic door system for smooth opening of safe door • Operates on (4) AA batteries (not included) • Can also be opened using supplied special access keys • Inner Dim.: 14-1/2"x11"x2-1/2" • Wt.: 21 lbs. • 1-Year Limited Warranty

Order #	MFG. #	Outer Dim.	Sugg.Ret.
1922403	AX11556	14-3/4"x11-1/4"x5"	\$279.99



### BARSKA® BIOMETRIC FINGERPRINT SAFE

• Fingerprint control can store up to 30 permanent or temporary users you choose • No need to memorize complicated combinations • Store important documents, medicines, cash, jewelry, & firearms or anything you want to keep hidden • Compact design hides nearly anywhere • Pre-drilled holes allow safe to be mounted to walls, onto shelves or counter tops • Includes emergency back-up keys • Operates on (4) AA batteries (not included) • Dimensions: 16 1/2" x 14 1/2" x 7 3/4" • Inner Dimensions: 16 1/4" x 14 1/4" x 7" • Wt.: 31 lbs. • 1-Year Limited Warranty

Order #	MFG. #	Style	Sugg.Ret.
1921352	AX11224	Biometric	\$259.99



### BARSKA® COMPACT BIOMETRIC FINGERPRINT SAFE

• Fingerprint control can store up to 30 permanent or temporary users • Pre-drilled holes allow the safe to be mounted into a wall, on a shelf or countertop • Operates on (4) AA batteries (not included) • Emergency back-up keys included • Inner Dim.: 7.6"x11.6"x5.9" • Wt.: 12 lbs. • 1-Year Limited Warranty

Order #	MFG. #	Outer Dim.	Sugg.Ret.
1922404	AX11620	7.8"x11.8"x7.8"	\$209.99



### BARSKA® DIGITAL KEYPAD SAFE

• Easy to read 4 digit bright LED display • 2 solid steel locking bolts • Pre-drilled holes in the back & bottom of safe • Operates on (4) AA batteries (not included) • Faceplate removes to reveal a backup key lock in case of battery failure • Includes protective floor mat ensuring items are not scratched and mounting hardware • Inner Dim.: 16"x12"x6-1/4" • Wt.: 26.5 lbs. • 1-Year Limited Warranty

Order #	MFG. #	Outer Dim.	Sugg.Ret.
1922405	AX11618	16-1/2"x14-1/2"x7-3/4"	\$159.99



### BARSKA® QUICK ACCESS BIOMETRIC RIFLE SAFE

• Quickly access & safely secure your rifles, shotguns & ammo by scanning your fingerprint • Registers your fingerprint in seconds • Stores up to 4 rifles • Internal 4 position barrel rest • Includes removeable storage shelf for guns & ammo • Silent Access feature allows you to mute beeping notification • Holds up to 120 different users • Features three point dead-bolt locking system • Operates on (4) AA batteries (included) • Emergency back-up keys & mounting hardware included • Outer Dim.: 8.6"x9.8"x52.17" • Inner Dim.: 6.3"x9.7"x52" • Wt.: 66 lbs. • Black finish

Order #	MFG. #	Sugg.Ret.
1922819	AX11652	\$359.99



### BROWNING® SAFES SAFE FEATURES HOME SECURITY & FIRE PROTECTION:

**CHILDPROOFING:** Browning® safes cannot be opened without the combination. No child can have access to your firearms unless they know the combination of your safe

**BURGLAR & FIRE PROTECTION:** Duo-Formed door is formed from a continuous piece of steel plate bonded to a second plate & fused to a rigid length of double-formed, custom shaped steel for an overall door edge thickness of 1-5/16". The door is extremely pry resistant, exceeds U.L. tool attack certification standards. Duo-Formed allows Browning to install a 1" thick layer of its own high-tech Imprafill™ fireproofing material sandwiched between the steel plates, increasing to 1-1/2" the total fire-resistant material. This construction places no weld or seam where they can be attacked, since no welding is required on the door face, there is no heat damage or warping during manufacturing. Exterior hinges allow 180° door opening & installation of fireproofing material around the entire door frame. Unsurpassed for security, every safe features a heavy-duty S&G Group II, UL listed bank-type combination lock with a spy-proof shield, internal relocker & hardplate protection. Massive 1-1/4" diameter cold rolled steel bolts, installed in the door to exacting tolerances, guard the door's perimeter. Uni-force Locking System prevents outside pressure to the locking bolts from being transmitted to the lock. The OmniBarrier™ lock protection system consists of multiple layers of case hardened steel in front of the main locking system, as well as a 1/4" steel plate behind, creating an attack resistant barrier. Platinum & Gold series safes include an additional case hardened anti-drill tungsten deflector plate. When excessive force is applied to the handle, the shear pin snaps free & the handle spins, eliminating the possibility for lock damage. The Vault-type Cam System locks bolts in the top and sides of the door securely in place.

continued next page

continued from previous page

**BROWNING® CONSERVATION SAFES**

Browning®/Pro-Steel Conservation Series safes are a great way to support hunting & the organizations that work to preserve our hunting heritage. These respected organizations strive to conserve & manage wildlife & habitat for present & future generations while promoting hunting in a positive manner. A portion of the proceeds of every Conservation Series safe sold goes directly to the respective conservation organization. Every safe features a baked-on finish with an exclusive game scene bonded to the door, OmniBarrier™ System & Uni-Force™ Locking System. Each model is UL tool attack listed, has an S & G Group II lock with key lock dial, 5-year limited warranty & is Omega Point Laboratories 1550°F fire-resistance listed. The plush Duo Interior is fully carpeted with an elevated floor to facilitate removal of guns.

**BROWNING® MEDALLION SERIES**

•Heavy, 10-gauge steel body •1-1/4" diameter chromed locking bolts •OmniBarrier™ & Uni-Force™ systems create a rugged, protected locking system •1-5/16" Duo-Formed door •UL tool attack listed •S & G group II lock with keylock & 5-year S & G limited warranty •Large gold metallic whitetail deer scene bonded to surface of safe door •Elevated floor to facilitate removal of guns •Baked-on, high-gloss finish •1200°F/75 min. fire protection listed & labeled by Omega Point Laboratories •Two 1/2" layers of fire-resistant material in the safe body •One 1/2" layer of fire-resistant material on the door back panel & a 1" layer of Imprafill™ insulation in the door face •Tan interior

**DROP SHIP****•DEALER ONLY DROP SHIP FOB**

Order #	MFG. #	Cap./Interior	Dimension	Sugg.Ret.
<b>HUNTER GREEN METALLIC</b>				
1910071	1604214305	11/DPX	60"x30"x27"	\$3,099.00
1910083	1604314705	24/DPX	60"x40"x28"	3,999.00
<b>GLOSS BLACK</b>				
1918207	1604224305	11/DPX	60"x30"x27"	3,099.00
<b>BLACK CHERRY</b>				
1920415	1604444905	21/DPX Tall	72"x48"x28"	4,899.00

**BROWNING® PLATINUM® PLUS**

•Ultra-heavy 3/16" steel body •Pry-Stop Corner Bolts at all 4 corners •Extended throw 1-1/2" chromed locking bolts •Uni-Force™ Locking System w/anti-pry tabs & extension arms •1-5/16" thick Duo-Formed® door •Uni-Force Locking System •OmniBarrier® Lock Protection System •UL tool attack listed •S & G® Group II lock with key lock dial & 5-year limited warranty •Premium DPX® Storage System w/simulated leather trim •Quick access DPX barrel rack •4 DPX handgun pouches •Integrated jewelry box •Interior cedar sides & ceiling •Interior light package & full length mirror •Knurled 5-spoke Buckmark handle •Metallic Elk Scene bonded to door •Baked-on, high gloss finish •1200°F/120 min. fire protection •5 layers of 1/2" fire insulation in the body, 4 layers in the door •Premium 3-in-1 Palusol® fire seal for added fire protection •Made in USA

**DROP SHIP****•DEALER ONLY DROP SHIP FOB**

Order #	MFG. #	Cap./Interior	Dimension	Sugg.Ret.
<b>HUNTER GREEN METALLIC</b>				
1921131	1605213834	22/33 + DPX	60"x40"x28"	\$5,799.00
<b>BLACK CHERRY</b>				
1921132	1605543834	21/45 + DPX Tall	72"x48"x28"	7,399.00

**BROWNING® SILVER™ SERIES**

•Rugged 11-gauge steel body •Pry-Stop end bolts •Extended throw 1-1/4" chromed locking bolts •Force-Deflector™ locking mechanism •1-5/16" thick Duo-Formed® door w/full inner plate •Hardened steel pin lock protection •UL tool attack listed •S & G® Group II lock with key lock dial & 5-year limited warranty •DPX Storage System •4 DPX handgun pouches •Deluxe 3-spoke handle •Metallic scene bonded to door •1200°F/60 min. fire protection •3 layers of 1/2" fire-resistant insulation in the body & door •Palusol® expanding fire seal •Made in USA

**DROP SHIP****•DEALER ONLY DROP SHIP FOB**

Order #	MFG. #	Cap./Interior	Sugg.Ret.
<b>BAKED-ON, HIGH GLOSS FINISH</b>			
<b>ELK SCENE, GLOSS BLACK</b>			
<b>DIMENSION: 72"x37"x27"</b>			
1921135	1600424530164905	20/30 + 10 DPX Tall	\$3,399.00
<b>PREMIUM SAFE SCROLL, SILVER METALLIC</b>			
<b>DIMENSION: 60"x30"x25"</b>			
1921133	1600276030164922	10/20 + 7 DPX	2,499.00
<b>RUGGED TEXTURED FINISH</b>			
<b>WHITETAIL BUCK/DOE SCENE, CHARCOAL</b>			
<b>DIMENSION: 60"x37"x27"</b>			
1921134	1600354630164908	20/30 +10 DPX	2,799.00

**BROWNING® BRONZE SERIES SAFES**

•1" steel bolts •3/16" plate door •12-gauge steel body •S & G Group II lock •5-year limited warranty •UL tool attack listed •Premium straight brass handle •Metallic game scene w/Browning® logo •Carpeted interior •Raised floor to facilitate removal of guns •Satin brass finished key lock dial •1200°F/40 min. fire protection listed & labeled by Omega Point Laboratories •Two layers of 1/2" fire-resistant material in the body & door •Tan interior

**DROP SHIP****•DEALER ONLY DROP SHIP FOB**

Order #	MFG. #	Cap.	Color/Finish	Sugg.Ret.
<b>TRIMLINE, DIM.: 60"x24"x18"</b>				
1919056	1603854215	8/16 Duo	Textured Charcoal	\$1,449.00
1919057	1603824215	8/16 Duo	Black Gloss	1,599.00
<b>STANDARD, DIM.: 60"x30"x22"</b>				
1919058	1603953615	12/24 Duo	Textured Charcoal	1,649.00
1919059	1603923615	12/24 Duo	Black Gloss	1,799.00

**BROWNING® TACTICAL SERIES MARK II**

•Heavy 11-gauge steel body •Pry-Stop end bolts •Extended throw 1-1/4" chromed locking bolts •Force-Deflector™ locking mechanism •1-5/16" thick Duo-Formed® door w/full inner plate •Hardened steel pin lock protection •UL tool attack listed •S & G® Type I electronic lock with 5-year limited warranty •DPX® Storage System w/loops for short barrel guns •4 DPX handgun pouches •Tactical-look single handle •Safe Top storage basket conveniently stores gear on safe •Side rails & external accessory rack •Rubber-coated shelves •Picatinny rails make for easy mounting of accessories inside safe •Key fob holder & small item tray •Full length mirrored back panel & interior light package •Raised-dot rubber floor panel •Elevated floor makes removing guns easier •Cast Browning® name plate •1200°F/60 min. fire protection •3 layers of 1/2" fire-resistant insulation in the body & door •Palusol® expanding fire seal

**DROP SHIP****•DEALER ONLY DROP SHIP FOB**

Order #	MFG. #	Cap./Interior	Dimension	Sugg.Ret.
<b>DULL BLACK</b>				
1921259	1608584679	20/30 + 10 DPX	60"x37"x27"	\$3,649.00



### BROWNING®/PRO-STEEL NEGOTIATED FREIGHT RATES

Of necessity, Browning® Pro-Steel safes are heavy because they're constructed to withstand attack or removal from the home. Because safes are heavy, most customers are concerned about the unknown freight costs.

Customers envision unreasonable costs, which is not the case. Our shipping volume has enabled us to negotiate substantial discounts, which we pass along to you and your customer. These rates are guaranteed to us for the period of January 1, 2013 through December 31, 2013, and are applicable to most shipping points in the United States, excluding Hawaii, Alaska and Utah.

Note: Rates are subject to fuel or other surcharges that may be imposed because of unusual economic conditions. A fuel surcharge of 1% to 6% may be added to these rates by the freight carrier. Charges may be higher to some destinations not directly served by Browning® carriers. Rates effective January 1, 2013 through December 31, 2013. Applicable only to prepaid and add shipments.

The table below enables you to know your freight cost before you order. You can ease any customer's objection to freight by showing him how reasonable freight will be on Browning® Pro-Steel safes.

#### PRO-STEEL REGULAR FREIGHT RATES (PER HUNDRED POUNDS)

JAN. 1, 2013 THROUGH DEC. 31, 2013

STATE LBS.	300 TO 499 LBS.	500 TO 999 LBS.	1,000 TO 1,999 LBS.	2,000 TO 4,999
ALABAMA	\$77.09	\$59.82	\$51.46	\$43.68
ARIZONA	42.80	34.39	29.66	25.24
ARKANSAS	67.69	54.84	47.10	40.59
CALIFORNIA	35.25	30.77	29.34	23.76
COLORADO	42.99	34.65	29.69	25.27
CONNECTICUT	81.64	64.59	55.22	46.89
DELAWARE	78.31	65.35	55.92	46.68
DIST. OF COLUMBIA	79.66	66.19	54.39	46.23
FLORIDA	86.35	66.75	56.95	45.77
GEORGIA	73.65	60.63	51.56	44.63
IDAHO	35.26	27.64	24.08	19.52
ILLINOIS	63.03	46.19	39.55	34.65
INDIANA	66.32	50.13	43.45	37.55
IOWA	57.70	45.54	37.66	34.14
KANSAS	53.94	43.63	39.45	33.37
KENTUCKY	68.82	56.05	48.20	40.46
LOUISIANA	70.63	55.44	47.28	39.69
MAINE	85.63	73.52	62.73	53.27
MARYLAND	78.95	62.41	53.98	44.94
MASSACHUSETTS	83.74	65.71	56.14	47.96
MICHIGAN	58.35	49.91	43.29	35.26
MINNESOTA	59.53	45.71	41.15	34.14
MISSISSIPPI	68.69	58.41	49.42	43.19
MISSOURI	59.27	48.24	41.45	34.77
MONTANA	50.35	40.89	34.43	28.94
NEBRASKA	49.72	40.56	34.96	30.41
NEVADA	38.64	29.95	26.86	21.75
NEW HAMPSHIRE	88.27	70.32	58.80	50.09
NEW JERSEY	83.31	65.35	55.89	48.07
NEW MEXICO	45.72	36.24	27.95	24.21
NEW YORK	89.07	69.57	59.63	49.45
NORTH CAROLINA	73.04	60.81	52.21	46.30
NORTH DAKOTA	54.25	42.77	39.26	33.02
OHIO	68.82	53.43	45.84	38.42
OKLAHOMA	58.68	47.63	41.01	34.83
OREGON	46.73	36.33	31.00	24.99
PENNSYLVANIA	69.57	53.14	45.78	38.76
RHODE ISLAND	84.46	68.75	59.14	49.68
SOUTH CAROLINA	75.31	64.76	53.20	45.37
SOUTH DAKOTA	55.40	44.71	38.36	33.18
TENNESSEE	74.09	55.64	47.63	41.01
TEXAS	55.14	43.61	37.40	31.58
VERMONT	91.50	70.32	60.07	51.02
VIRGINIA	79.08	59.97	51.49	43.58
WASHINGTON	47.40	36.57	32.05	25.68
WEST VIRGINIA	74.02	60.23	50.92	43.61
WISCONSIN	63.50	50.82	43.68	37.62
WYOMING	49.77	36.76	31.96	27.06





## BROWNING® SAFE OPTIONS

Electronic Lock- Brass w/black numbers, factory installed on new safe only, includes batteries. **MUST BE FACTORY INSTALLED.**

Everdry™ Electric Dehumidifier- Removes humidity from the interior of a safe and protects against rust. The 18" long EverDry should be used on safes 30" wide and larger. Cord is removable for installation without the electrical outlet.

Order #	MFG. #	Option	Sugg.Ret.
1918813	164128	Everdry™ Electric Dehumidifier	\$29.95



## BROWNING® DRY-ZONE DESICCANT

•Absorbs moisture without electricity •Rechargeable in an oven •Can be reactivated indefinitely  
•One 550 gram box protects up to 37 cubic feet of enclosed space (standard 30" wide safe)

Order #	MFG. #	Sugg.Ret.
1919070	154-001	\$19.95



**NEW**

## BULLDOG VAULTS MAGNUM SERIES LED DIGITAL VAULT w/AUTOMATIC BOLT SYSTEM

•Easy access LED "Nightlight" buttons •Quick access spring loaded door automatically opens when correct code is entered •30% heavier than most other similar sized vaults •30 second interior LED light when door is opened •Audible sound may be muted •Thick egg crate interior padding •Requires (4) AA batteries, not included MODEL BD4020: Features interior shelf for added storage

Order #	MFG. #	Size	Sugg.Ret.
1923446	BD4010	7.25"x11"x8"	\$120.00
1923447	BD4020	9.75"x13.75"x10"	150.00



**NEW**

## BULLDOG VAULTS MAGNUM DIGITAL VAULT

•Quick access spring loaded door automatically opens when correct code is entered •30% heavier than most other similar sized vaults •30 second interior LED light when door is opened •Audible sound may be muted •Requires (4) AA batteries, not included

Order #	MFG. #	Size	Sugg.Ret.
1923445	BD4000	7.25"x11"x8"	\$90.00



## BULLDOG VAULTS STANDARD DIGITAL PISTOL VAULT

•12 digit keypad for more secure combination options •More than 1000 combinations available •Secure hidden key override •Pre-drilled mounting holes •Soft bottom carpet for protection •Heavy-duty steel construction •Durable powder coated black matte finish •2-3/4" steel locking bolts on door •Mounting hardware included •Low voltage LED light •Tamper Alarm for extra security

Order #	MFG. #	Size	Sugg.Ret.
1922329	BD1050	7"x12"x10"	\$69.25
1922820	BD1060	10"x13.5"x10"	103.50
1922821	BD1070	17"x13.5"x13.5"	163.50



Model BD1500



Model BD2500

## BULLDOG VAULTS DELUXE DIGITAL PISTOL VAULTS

•Heavy duty steel construction w/deluxe foam interior & egg crate bottom pad •Easy Guide touch pad features raised ribs that lead your fingers to the numbered buttons for quick & easy code entry •After 4 invalid code entries the electronic control panel is temporarily disabled for 3 minutes then resets to accept the valid code •Smart Safe technology remembers safe combination during power loss or while changing batteries •Secure cylinder key override •Pre-drilled mounting holes & security cable holes •Durable, powder-coated black matte finish •Come w/mounting hardware •Includes interior light, spring loaded door & external power supply MODEL BD1500: Exterior Dimensions: 11"x8"x5.5"/4" MODEL BD2500: Features sliding shelf for extra storage. Exterior Dimensions: 14"x10"x8"/6.5"

Order #	MFG. #	Model	Sugg.Ret.
1922331	BD1500	BD1500	\$108.75
1922332	BD2500	BD2500	149.75

**NEW**

## BULLDOG VAULTS DELUXE TOP LOAD DIGITAL PISTOL VAULT

•"Easy Guide" top pad features raised ribs for quick & easy code entry •4 invalid keypad entries disable the electronic control panel & after 3 minutes the automatic electronic reset will allow acceptance of valid code •"Smart Safe" technology remembers safe combination during power loss or while changing the batteries •More than 1000 combinations available •Secure cylinder key override •Pre-drilled mounting holes •Pre-drilled holes for optional security cable •Deluxe foam interior w/egg-crate bottom pad •Heavy-duty steel construction •Durable powder coated black matte finish •Mounting hardware included •Top-load design works great in furniture w/sliding drawers •Spring loaded door for easy access •Exterior Dimensions 11"x8.5"x2.2"

Order #	MFG. #	Color	Sugg.Ret.
1922330	BD1200	Black	\$105.00



**NEW**

### BULLDOG VAULTS "ONE TOUCH" SPRING-LOADED PERSONAL SAFE

•Unique spring loaded open tray design allows fast, reliable access to firearms and valuables •"One Touch" design opens with the push of a finger •Mounting hardware and deluxe security cable included •Extra heavy-duty steel construction •Scratch resistant interior •Black matte powder paint finish •Deluxe tamper resistant lock •11"x7.5"x2.5"

Order #	MFG. #	Sugg.Ret.
1923442	BD1170	\$51.00

**NEW**

### BULLDOG VAULTS DELUXE DIVERSION BOOK SAFE

•Discreetly conceals and protects firearms and valuables •Ideal for use in home or office •Steel safe box provides 360 degrees of protection •Deluxe foam interior •Easy access three wheel combination lock •Exterior dimensions: 10.5"x7.75"x2.75" •Interior dimensions: 9.25"x7"x1.5"

Order #	MFG. #	Color	Sugg.Ret.
1923443	BD1180	Blue	\$25.50
1923444	BD1182	Brown	25.50



### BULLDOG VAULTS PERSONAL SAFE w/SECURITY CABLE

•Includes security cable  
•Size: 9.5"x6.5"x2" •Black

Order #	MFG. #	Lock Style	Sugg.Ret.
1922823	BD1120	Deluxe key	\$22.50
1922824	BD1125	Combination	25.50



### BULLDOG VAULTS CAR/PERSONAL PISTOL VAULT

•Heavy duty steel construction w/black matte powder finish •Soft, durable scratch-resistant interior •Deluxe key style lock •Features mounting bracket that can be mounted anywhere (includes hardware) •Can be secured without bracket by using the included 3' security cable •When box is locked it cannot be removed from mounting bracket •Ideal for use in cars, trucks, vans, boats, office or home

Order #	MFG. #	Ext. Dim.	Int. Dim.	Sugg.Ret.
1922334	BD1100	8.7"x6"x2.5"	7"x5.25"x2"	\$29.25
1922535	BD1150	10.75"x6.5"x2.5"	10"x6.25"x2"	35.50



### BULLDOG VAULTS MODEL BD3000 BIOMETRIC FINGERPOINT PISTOL VAULT

•Features the ability to register more than 25 user fingerprints •LED display notifies user if print is accepted •Hidden key override for emergency entry •Heavy duty steel construction w/black matte powder finish •Deluxe egg crate bottom pad for extra protection •2-3/4" steel locking bolts on door •Motorized bolts for easy access •Low voltage alarm •External backup battery box for emergency use •Exterior Dimensions: 14"x16.5"x8"

Order #	MFG. #	Sugg.Ret.
1922333	BD3000	\$315.00



### CANNON SAFE CANNON SERIES

•Massive 1-1/2" double-steel composite door •1" Active-locking bolts •High-security commercial grade Type 1 electronic lock •Surefire multiple re-lockers •3 layers extra-hard, 60+ RC steel hard-plate protects the lock •Truelock internal hinges •3-spoke handle •Beveled edge, unibody construction •Pre-drilled bottom for bolting to floor •Heavy 12-gauge •Interior Lighting System -LED lights activate when door is opened, shuts off when closed •Two convenient 110 outlets inside the safe •Computer-style external source plug runs to the wall •Tru-Rack™ Luxury Interior •Plush velour-lined shelving with oak facing is fully adjustable •Intertek-ETL Verified - 1200° for 60 minutes •Triple fin intumescent cold smoke expandable seal •Heat-activated door seal that expands many times its size when exposed to heat •2-step door provides an extra barrier with more sealing surface

**DROP SHIP** **•DEALER ONLY DROP SHIP PREPAID**

Order #	MFG. #	Dimensions	Wt.	Holds	Sugg.Ret.
<b>GLOSS FINISH (SPECIFY COLOR)</b>					
1921317	C23-GLOSS	30"x60"x24"	620 lbs.	22	\$1,680.00

### CANNON SAFE PATRIOT SERIES

•Massive 1" steel composite door •1" Active-locking bolts •High-security commercial grade Type 1 electronic lock •Surefire multiple re-lockers •3 layers extra-hard, 60+ RC steel hard-plate protects the lock •Truelock internal hinges •3-spoke handle •Unibody construction •Pre-drilled bottom for bolting to floor •Heavy 12-gauge •Pre-drilled dehumidifier hole •Tru-Rack™ Luxury Interior •Adjustable upholstered finished shelving & inside walls •Intertek-ETL Verified - 1200° for 30 minutes •Triple fin intumescent cold smoke expandable seal •Heat-activated door seal that expands many times its size when exposed to heat

**DROP SHIP** **•DEALER ONLY DROP SHIP PREPAID**

Order #	MFG. #	Dimensions	Wt.	Holds	Sugg.Ret.
<b>TEXTURED MATTE BLACK FINISH</b>					
1921319	P14	22"x59"x20"	400 lbs.	6-12	\$1,142.00
1921320	P22	30"x59"x24"	525 lbs.	12-24	1,438.00





**NEW**

### CANNON™ SECURITY PRODUCTS RADIO VAULT

- FM radio w/presets •Dual alarms •Time - Sync •Works w/most MP3 devices •Biometric fingerprint scanner
- Hidden drawer for securing valuables •Easy to use keypad •High contrast LCD •Visual display of date •Black

Order #	MFG. #	Sugg.Ret.
1925373	RV-01 BLK	\$399.99



**NEW**

### CANNON™ S ECURITY PRODUCTS WALL VAULT

- Smooth operating door •Hidden internal storage compartment •Electronic keypad technology •Operates on 4 AA batteries •2 access codes available (from 1 to 8 digits) •10 wrong entries/3 min. automatic lockout •Backup key lock •Wall cutout template •Exterior Dim: 14"Wx14"Hx4"D; Interior Dim.: 13.25"Wx8.5"Hx3.5"D •White

Order #	MFG. #	Sugg.Ret.
1925374	WV-01	\$249.99



### G.P.S. GUN CABINET MODULAR STORAGE SYSTEM

- Storing your shooting accessories has never been made easier
- System expands the areas of storage on the inner walls or inside door of all metal gun cabinets •Patent pending system has magnetic backing sewn directly into the back side of each modular storage item
- Rare earth magnets provide extra strength to hold heavier weight

Order #	MFG. #	Description	Sugg.Ret.
1922496	GPS-304UPI	Pistol Holder w/Clip	\$17.79
1922497	GPS-305CL3	Univ. 3-Clip Holder	17.79
1922498	GPS-306SL3	Univ. 3-Speed Loader	17.79
1922499	GPS-307SH5	Univ. 5-Shot Shell Holder	17.79
1922502	GPS-312AC1	Accessory Pouch w/Zipper	17.79
1922503	GPS-313CT5	Univ. 5-Choke Tube Holder	17.79
1922504	GPS-316FBB	Long Gun Barrel Buddy	15.19



### G.P.S. GUN SAFE MODULAR STORAGE SYSTEM

- Storing your shooting accessories has never been made easier
- System can utilize any area that has carpeting on the inner walls or inside door of safes •Patent pending system features hook & loop backing that is sewn directly onto the back side of each modular storage item



Order #	MFG. #	Description	Sugg.Ret.
1922506	GPS-205CL3	Univ. 3-Clip Holder	\$7.79
1922513	GPS-212AC1	Accessory Pouch w/Zipper	8.69
1922508	GPS-213CT5	Univ. Choke Tube Storage	10.39



**NEW**

### GUNVAULT® TACVAULT™

- Fits AR-style rifle w/30 rnd. mag or tactical shotgun •Convenient shelf for spare ammunition, etc.
- Discreetly fits in most standard closets •Predrilled to secure to floor •High strength lock mechanism
- Precise fittings are virtually impossible to pry open w/hand tools •Power supply: (1) 9v battery •External Dim.: 48"x10"x17" •Internal Dim.: 47-1/4"x9-3/4"x14" •Wt.: 80 lbs.



Order #	MFG. #	Lock	Sugg.Ret.
1925371	TV4810	Digital	\$449.99
1925372	TVB4810	Biometric	549.99

### GUNVAULT® BIO 1000 & 2000

- 16-ga. steel construction, soft foam lining •Uses biometrics, specifically fingerprint recognition, to access contents •High-performance algorithm is used to achieve speedy identification of enrolled fingerprints & has very low False Reject Rate (FRR) for a given False Accept Rate (FAR) •System handles maximum of 30 fingerprint templates •Tamper-proof, spring-loaded door •1-year battery power supply under normal conditions •Blinking low-battery light •Interior courtesy light •Audio & LED low battery warning •Includes: mounting gear & power connection jack for external AC or DC power supply (adapter included)



Order #	MFG. #	Size	Power	Sugg.Ret.
<b>BIO 1000</b>				
1920644	GVB1000	8.1"Wx4.9"Hx12"D	8 AA	\$309.99
<b>BIO 2000</b>				
1920645	GVB2000	10.1"Wx7.9"Hx14"D	9-Volt	349.99





### GUNVAULT® MULTIVAULT™

•16-ga. steel construction w/soft foam liner  
•High-strength lock mechanism •Removable interior shelf, constructed of ABS plastic  
•Precise fittings are virtually impossible to pry open w/hand tools  
•Built-in computer blocks access after repeated invalid keypad entries  
•Tamper indicator •Conveniently located, unique No-Eyes® keypad allows quick access, easy-to-use •Audio feedback confirms each correct keypad entry •Audio disable option adds security of silent mode operation •Battery power provides maximum security, easy portability  
•Operates on 8 AAA alkaline batteries •Mounts almost anywhere in any direction •Keyslots & mounting screws included

Order #	MFG. #	Sugg.Ret.
1919430	GV2000C-STD	\$179.99



### GUNVAULT® MULTIVAULT™ DELUXE

•16-ga. steel construction w/soft foam liner  
•High-strength lock mechanism  
•Removable interior shelf, constructed of steel w/padding  
•Precise fittings are virtually impossible to pry open w/hand tools  
•Built-in computer blocks access after repeated invalid keypad entries  
•Tamper indicator •Conveniently located, unique No-Eyes® keypad allows quick access, easy-to-use •Audio feedback confirms each correct keypad entry •Audio disable option adds security of silent mode operation •Battery power provides maximum security, easy portability  
•Operates on 8 AAA alkaline batteries  
•Mounts almost anywhere in any direction •Foolproof security •Motion detector w/audio alarm helps guard against direct tampering •Audio low battery warning  
•Can be programmed for use with up to three user access codes •Keyslots & mounting screws included

Order #	MFG. #	Sugg.Ret.
1919432	GV2000C-DLX	\$209.99



### GUNVAULT® MINIVAULT™

•16-ga. steel construction w/soft foam liner  
•High-strength lock mechanism  
•Precise fittings are virtually impossible to pry open w/hand tools  
•Built-in computer blocks access after repeated invalid keypad entries  
•Tamper indicator  
•Conveniently located, unique No-Eyes® keypad allows quick access, easy-to-use •Audio feedback confirms each correct keypad entry  
•Audio disable option adds security of silent mode operation •Battery power provides maximum security, easy portability  
•Operates on 8 AAA alkaline batteries  
•Mounts almost anywhere in any direction •Keyslots & mounting screws included

Order #	MFG. #	Sugg.Ret.
1919429	GV1000C-STD	\$149.99



### GUNVAULT® MINIVAULT™ DELUXE

•16-ga. steel construction w/soft foam liner  
•High-strength lock mechanism  
•Precise fittings are virtually impossible to pry open w/hand tools  
•Built-in computer blocks access after repeated invalid keypad entries  
•Tamper indicator  
•Conveniently located, unique No-Eyes® keypad allows quick access, easy-to-use •Audio feedback confirms each correct keypad entry •Audio disable option adds security of silent mode operation •Battery power provides maximum security, easy portability  
•Operates on 8 AAA alkaline batteries •Mounts almost anywhere in any direction •Foolproof security •Motion detector w/audio alarm helps guard against direct tampering •Audio low battery warning  
•Can be programmed for use with up to three user access codes •Keyslots & mounting screws included

Order #	MFG. #	Sugg.Ret.
1919431	GV1000C-DLX	\$169.99



### GUNVAULT® MICROVAULT

•Unique notebook-style design  
•Outside is constructed of heavy gauge steel  
•Soft foam on the inside  
•Incredibly compact & lightweight; fits in a briefcase or day pack  
•Conveniently located keypad is easy to use  
•Patented "no-eyes" keypad allows for quick access  
•Precise fittings are virtually impossible to pry open w/hand tools  
•Built-in computer blocks access after repeated invalid keypad entries  
•Dim.: 11"Wx8"Hx2"D

Order #	MFG. #	Lock Style	Sugg.Ret.
1920996	MV500-STD	Standard	\$149.99
1920997	MVB500	Biometric	229.99



### GUNVAULT® MICROVAULT XL

•Fits most tablets & E-readers  
•18-gauge steel construction  
•Protective foam-lined interior  
•Convenient elastic strap w/ pockets for extra storage  
•High-strength lock mechanism performs reliably time after time  
•Precise fittings are virtually impossible to pry open w/hand tools  
•Patented No-Eyes® keypad for quick access  
•Built-in computer blocks access after repeated invalid keypad entries (Digital models only)  
•High strength steel security cable included •Dimensions: 12"x10.25"x3.5" •Wt.: 7.5 lbs.

Order #	MFG. #	Lock Style	Sugg.Ret.
1922855	MV1000-STD	Standard	\$179.99
1922856	MVB1000	Biometric	319.99



### GUNVAULT® NANOVAULT™

•Compact, secure & affordable handgun storage safe solution  
•Perfect for home, travel or concealed-weap-on permit holders  
•Meets TSA airline firearm guidelines & fits discreetly in a bag, briefcase, desk or under a vehicle seat  
•21 gauge steel construction  
•1.25" thick memory foam interior  
•Includes: 1500 lb. test security cable

Order #	MFG. #	Model	Dimensions	Sugg.Ret.
<b>KEY LOCK SYSTEM</b>				
1921213	NV100	100	8.25"x6"x1.75"	\$29.99
1921214	NV200	200	9.5"x6.5"x1.75"	34.95
<b>COMBINATION LOCK SYSTEM</b>				
1921215	NV300	300	9.5"x6.5"x1.75"	39.95







### GUNVAULT® DRAWERVAULT SERIES

•Fits & operates in most standard drawers for ideal handgun storage •Great for home & business to store passports, documents, cash, & other valuables •Fits most tablets & E-readers •18-gauge steel construction •Protective foam-lined interior •Tamper-resistant door •Patented No-Eyes® keypad for quick access •Audio & LED low battery warning •Back-up override key included •Dimensions: 12"x10"x4.25" •Wt.: 8.1 lbs.

Order #	MFG. #	Lock Style	Sugg.Ret.
1922859	GV3000-STD	Standard	\$219.00
1922860	GVB3000	Biometric	334.99



### GUNVAULT® SPEEDVAULT

•Fast activation drop-down drawer •18-gauge steel construction •Protective foam-lined interior •Multiple mounting options •Mounting hardware included •Audio & LED low battery warning •Back-up override key included •Powered by (1) 9V battery •Dimensions: 13"x3.5"x6.5" •Wt.: 6.61 lbs.

Order #	MFG. #	Lock Style	Sugg.Ret.
1922857	SV500	Standard	\$199.99
1922858	SVB500	Biometric	319.99



### GUNVAULT® SECURITY CABLE

•6" high strength steel cable •Works w/GunVault Mini, Multi, Mini Deluxe, Micro, Multi Deluxe and Bio 1000 & Bio 2000 safes •Perfect for homes, RVs, autos, offices or motels

Order #	MFG. #	Sugg.Ret.
1920646	BB3000	\$15.95



**NEW**

### FORTRESS® SAFE FS14 FIRE-SAFE®

•14 gun capacity •6 large 1" steel bolts to keep your valuables safe from unauthorized entry •Recessed door for increased pry resistance •40 min. fire protection at 1200° F to keep valuables protected •1" fire door thickness •14 gauge steel thickness •Programmable electronic lock for quick access to guns & valuables •Override key for emergency access •3 spoke handle •Premium door organization system for maximum storage •Adjustable shelves •Bolt down kit •Lifetime Attack Warranty, 10-year Manufacturer's Warranty, 1-year Satisfaction Guarantee •Marble Gray finish •Wt.: 280 lbs.

**DROP SHIP**

•DEALER ONLY DROP SHIP PREPAID

Order #	MFG. #	Ext. Dim.	Sugg.Ret.
1923417	FS14	60"Hx20"Wx18"D	\$699.00



**NEW**

### FORTRESS® SAFE FS18 FIRE-SAFE®

•18 gun capacity •6 large 1" steel bolts to keep your valuables safe from unauthorized entry •Recessed door for increased pry resistance •40 min. fire protection at 1200° F to keep valuables protected •1" fire door thickness •14 gauge steel thickness •Programmable electronic lock for quick access to guns & valuables •Override key for emergency access •3 spoke handle •Premium door organization system for maximum storage •Adjustable shelves •Bolt down kit •Lifetime Attack Warranty, 10-year Manufacturer's Warranty, 1-year Satisfaction Guarantee •Marble Gray finish •Wt.: 320 lbs.

**DROP SHIP**

•DEALER ONLY DROP SHIP PREPAID

Order #	MFG. #	Ext. Dim.	Sugg.Ret.
1923418	FS18	60"Hx24"Wx20"D	\$799.00



**NEW**

### FORTRESS® SAFE FS30 FIRE-SAFE®

•30 gun capacity •10 X-large 1-1/4" steel bolts to keep your valuables safe from unauthorized entry •Recessed door for increased pry resistance •Patented notched-bolt technology for improved pry resistance •60 min. fire protection at 1200° F to keep valuables protected •1-1/2" fire door thickness •12 gauge steel thickness •Programmable electronic lock for quick access to guns & valuables •Override key for emergency access •3 spoke handle •Premium door organization system for maximum storage •Adjustable shelves •Bolt down kit •Lifetime Attack Warranty, 10-year Manufacturer's Warranty, 1-year Satisfaction Guarantee •Marble Gray finish •Wt.: 510 lbs.

**DROP SHIP**

•DEALER ONLY DROP SHIP PREPAID

Order #	MFG. #	Ext. Dim.	Sugg.Ret.
1923419	FS30	60"Hx28"Wx20"D	\$999.00



**NEW**

### FORTRESS® SAFE FS36 FIRE-SAFE®

•36 gun capacity •10 X-large 1-1/4" steel bolts to keep your valuables safe from unauthorized entry •Recessed door for increased pry resistance •Patented notched-bolt technology for improved pry resistance •60 min. fire protection at 1200° F to keep valuables protected •1-1/2" fire door thickness •12 gauge steel thickness •Programmable electronic lock for quick access to guns & valuables •Override key for emergency access •3 spoke handle •Premium door organization system for maximum storage •Adjustable shelves •Bolt down kit •Lifetime Attack Warranty, 10-year Manufacturer's Warranty, 1-year Satisfaction Guarantee •Marble Gray finish •Wt.: 510 lbs.

**DROP SHIP**

•DEALER ONLY DROP SHIP PREPAID

Order #	MFG. #	Ext. Dim.	Sugg.Ret.
1923420	FS36	60"Hx33"Wx20"D	\$1,299.00





**NEW**

### FORTRESS® SAFE

#### FS45S LIL CHUBBY FIRE-SAFE®

•45 gun capacity •10 X-large 1-1/4" steel bolts to keep your valuables safe from unauthorized entry •Recessed door for increased pry resistance •Patented notched-bolt technology for improved pry resistance •60 min. fire protection at 1200° F to keep valuables protected •1-1/2" fire door thickness •12 gauge steel thickness •Programmable electronic lock for quick access to guns & valuables •Override key for emergency access •3 spoke handle •Premium door organization system for maximum storage •Adjustable shelves •Bolt down kit •Lifetime Attack Warranty, 10-year Manufacturer's Warranty, 1-year Satisfaction Guarantee •Marble Gray finish •Wt.: 680 lbs.

**DROP SHIP**

•DEALER ONLY DROP SHIP PREPAID

Order #	MFG. #	Ext. Dim.	Sugg.Ret.
1923421	LIL CHUBBY/FS45S	60"Hx40"Wx22"D	\$1,499.00



**NEW**

### FORTRESS® SAFE

#### FS60S BIG CHUBBY FIRE-SAFE®

•60 gun capacity •11 jumbo 1-1/2" titanium bolts to keep your valuables safe from unauthorized entry •Recessed door for increased pry resistance •Patented notched-bolt technology for improved pry resistance •95 min. fire protection at 1350° F to keep valuables protected •1-1/2" fire door thickness •12 gauge steel thickness •Programmable electronic lock for quick access to guns & valuables •Override key for emergency access •5 spoke handle •Premium door organization system for maximum storage •Interior LED lighting •Adjustable shelves •Power outlet •Bolt down kit •Lifetime Attack Warranty, 10-year Manufacturer's Warranty, 1-year Satisfaction Guarantee •Wt.: 880 lbs.

**DROP SHIP**

•DEALER ONLY DROP SHIP PREPAID

Order #	MFG. #	Ext. Dim.	Sugg.Ret.
1923422	BIG CHUBBY/FS60S	60"Hx40"Wx28"D	\$2,299.00



**NEW**

### FORTRESS® SAFE

#### FS60 FIRE-SAFE®

•60 gun capacity •12 X-large 1-1/4" steel bolts to keep your valuables safe from unauthorized entry •Recessed door for increased pry resistance •Patented notched-bolt technology for improved pry resistance •60 min. fire protection at 1200° F to keep valuables protected •1-1/2" fire door thickness •12 gauge steel thickness •Programmable electronic lock for quick access to guns & valuables •Override key for emergency access •3 spoke handle •Premium door organization system for maximum storage •Adjustable shelves •Bolt down kit •Lifetime Attack Warranty, 10-year Manufacturer's Warranty, 1-year Satisfaction Guarantee •Marble Gray •Wt.: 800 lbs.

**DROP SHIP**

•DEALER ONLY DROP SHIP PREPAID

Order #	MFG. #	Ext. Dim.	Sugg.Ret.
1925367	FS60	72"Hx40"Wx25"D	\$2,199.00



### FORTRESS SECURITY

#### REGAL SERIES

#### BY HERITAGE SAFE COMPANY

UL listed and certified for security. Class III 75-minute ITR fire certification. 1/8" steel body. 3/8" door reinforced fire door. Strong external hinges Palusol fire seal. 3 7/8" overall door thickness. 1 3/4" firewall (up to 4 layers). 1 1/4" diameter pry-bolt locking bolts at critical spots. UL-listed group II lock. 5-point handle. Triple relockers. Diam-a-Shield™ double hardplate protecting critical spots. Detent system. EZ utility door organizer Lifetime warranty.

**DROP SHIP**

•DEALER ONLY DROP SHIP FOB

Order #	MFG. #	Dimensions	Weight	Sugg.Ret.
1922903	FSR3360T	33"x60"x25"	720 lbs.	\$2,099.00
1922904	FSR3960T	39"x60"x28"	800 lbs.	2,499.00
1922905	FSR3966T	39"x66"x28"	950 lbs.	2,699.00
1919938	FSR4372T	43"x72"x28"	1075 lbs.	2,999.00
1922907	FSR5672T	56"x72"x28"	1250 lbs.	3,999.00
1922908	GLOSS OPTION	(See below for color options)		449.00
1922909	BCT OPTION	Black Chrome Trim		99.00

Please Specify Textured Exterior Color: Emeraldstone, Bluestone, Cherrystone, Granite, Sandstone or Blackstone. Gloss colors are optional for an additional charge.

Black Chrome Trim is available for an additional charge.

Please Specify color desired.

Gloss Black, Pearl White Metallic, Hunter Green Metallic, 2-Tone Gecko Green Metallic, 2-Tone Sapphire Blue Metallic, 2-Tone Crimson Metallic, 2-Tone Cold Steel Metallic, 2-Tone Bronze Metallic or 2-Tone Titanium Metallic

Please Specify Interior Color: Beige Only

Please Specify Interior Style: See Chart

Priced with S&G Group II Combination Lock



### HERITAGE SAFE COMPANY

#### LEGARD ELECTRONIC

#### LOCK INSTALLED

Available on any Regal Safe. Be sure to specify which safes you would like upgraded.



**DROP SHIP**

•DEALER ONLY DROP SHIP FOB

Order#	Mfg. #	Description	Sugg.Ret.
1919942	LG-I	Legard Lock Installed	\$149.00

### HERITAGE SAFE COMPANY

#### HERITAGE LIGHT KIT WITH SWITCH 48"

**DROP SHIP**

•DEALER ONLY DROP SHIP FOB

Order#	Mfg. #	Sugg.Ret.
1920098	LK FL	\$249.00



### HERITAGE SAFE COMPANY

#### HERITAGE ELECTRIC DEHUMIDIFIER

Keeps your guns free from rust and your other valuables mildew-free.

**DROP SHIP**

•DEALER ONLY DROP SHIP FOB

Order#	Mfg. #	Sugg.Ret.
1920738	DH	\$49.00



**NEW**

### LOCKDOWN™ HANDGUN RACK

•Holds 2 pistols or revolvers •Vinyl coating won't scratch or mar handgun's finish •Free up room in your gun safe or cabinet •Use at range to hold handguns while not in use •2 gun rack

Order #	MFG. #	Sugg.Ret.
1923342	222704	\$12.99



**NEW**

### LOCKDOWN™ STACKABLE HANDGUN RACK

•Holds 8 pistols and/or revolvers •Free up room in your gun vault or cabinet •Use independently or stacked •Vinyl coating won't scratch or mar handgun's finish •4+4 gun rack

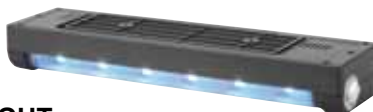
Order #	MFG. #	Sugg.Ret.
1923343	222504	\$39.99



### LOCKDOWN™ CORDLESS VAULT LIGHT

•Light fixture features (6) ultra-bright LEDs w/90° rotating head •Multiple Mounting Options: internal magnets for metal interiors, detachable mounting plate & screws or adhesive-backed hook & loop pads included •Runs on (3) AAA batteries (not included)

Order #	MFG. #	Clamshell Dimensions	Sugg.Ret.
1922817	222-777	8.125"Wx8.625"Hx3.5"D	\$22.99



### LOCKDOWN™ VAULT LIGHTING KIT

•Designed to provide illumination throughout entire vault interior •Flexible rope design can be routed to provide superior light coverage, regardless of shelf configuration inside the vault •Kit contains 12' section of superbright white LED lights housed in durable clear tube & 6' power cord with On/Off switch •Easy-install electrical plug •Mounting hardware included

Order #	MFG. #	Sugg.Ret.
1922356	222020	\$32.99



### LOCKDOWN™ DEHUMIDIFIER ROD

•Designed to slightly increase and maintain air temperature within gun safes or other enclosures •Removes moisture from gun safe interior •Guards against rust, humidity, mildew & condensation •Mounting brackets included •Easy-install quick plug attachment (110V) •Protects firearm investment •Dries approx. 100 cu. ft. (12") or 200 cu. ft. (18")

Order #	MFG. #	Length	Sugg.Ret.
1922357	222000	12"	\$24.99
1922358	222010	18"	29.99



### LOCKDOWN™ HYGROMETER

•Provides accurate relative humidity readings w/ large easy-to-read numbers •Allows you to monitor & control the relative humidity in your vault to protect your guns from excessive moisture that can cause rapid corrosion & pitting on metal surfaces •Mounts easily w/included fastener and/or hook & loop •Size: 2.75" dia.

Order #	MFG. #	Sugg.Ret.
1922359	222111	\$9.99



### LOCKDOWN™ MAGNETIC BARREL REST

•Conveniently secures to the outside of any vault & provides the perfect staging location •Serves as an extra hand when moving guns in & out of vault •Holds 3 guns securely when leaned against vault •Secures to vault w/strong magnets •Rubber-backed magnets protect vault finish •Overmolded contact points protect firearm finish

Order #	MFG. #	Sugg.Ret.
1922363	222177	\$15.99



### LOCKDOWN™ LARGE HANGING ORGANIZER

•Secure & organize small valuables, handguns, knives & more •Includes 6 pockets w/elastic band & durable see-thru mesh fabric •The 3 largest pockets feature zippers that can be opened to allow handgun barrels to protrude through or closed to contain smaller items •Rigid back panel adds support to the organizer •Universal Attachment System includes hooks for carpeted interiors & magnets for metal interiors •Mounts to inside of vault door •Dimensions: 13.5"Wx9"Hx3"D

Order #	MFG. #	Sugg.Ret.
1922364	222168	\$22.99



### LOCKDOWN™ UNIVERSAL HANDGUN HANGER

•Fits most compact, medium-frame & large-frame handguns or revolvers •The wedge shape design w/open bottom allows the barrel to protrude through •Elastic bands & rigid back panel provide the structure to hold guns securely in place •Universal Attachment System includes hooks for carpeted interiors & magnets for metal interiors •Mounts to inside of vault door •Dimensions: 8.6"Wx5"Hx0.75"D

Order #	MFG. #	Sugg.Ret.
1922366	222172	\$9.99



### LOCKDOWN™ EXTERNAL 10" HANGER

•4 separate hooks add storage capacity to the outside of your gun vault •Ideal for empty gun cases, holster belts, cleaning rods or other misc. items •Securely mounts via integrated, high-strength vinyl-coated magnets that protect vault finish from scratches •Heavy-duty powder-coated steel construction •Hold up to 30 lbs •Width: 10"

Order #	MFG. #	Clamshell Dimensions	Sugg.Ret.
1922818	222-454	10.75"Wx9.75"Hx1.5"D	\$29.99







### LOCKDOWN™ VAULT DRAWER

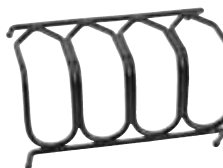
•Wire-constructed frame slides over & mounts to any shelf up to 1" thick •Frame design keeps the user from pulling the drawer out too far & spilling its contents •Provides 11.5"Wx2"Dx2"H worth of previously unused space •No tools needed to install •Dimensions: 14"Wx14"Hx4"D



Order #	MFG. #	Sugg.Ret.
1922367	222155	\$24.99

### LOCKDOWN™ HANDGUN RACK

•Free up room in your gun safe or cabinet •Use at range to hold handguns while not in use •Vinyl-coated metal handgun racks will not scratch or mar handgun finishes •Features individual channels that are specifically designed to cradle the grip & barrel of the gun & are wide enough to accommodate most wide body pistols or magnum revolvers



Order #	MFG. #	Holds	Sugg.Ret.
1922368	222200	4 Guns	\$16.99
1922369	222210	6 Guns	24.99

### LOCKDOWN™ HANDGUN SECURITY VAULTS

•Designed to provide an additional level of security for CWP holders •Durable, 18 gauge steel walls •Extra-heavy 12 gauge reinforced side & bottom plate for securing any flat surface w/included mounting hardware •Comes w/heavy-duty 43", 1500lb steel cable for securing vault to stationary objects or the internal frames of luggage •Meets TSA guidelines •NOTE: Compact size fits most compact revolvers & autos; Large size fits most full size autos & revolvers w/barrels up to 4"



Order #	MFG. #	Size	Sugg.Ret.
1922371	222144	Large	\$24.99

### LOCKDOWN™ SILICA BEADS

•Silica beads absorb moisture from the air to prevent condensation, mildew & rust from damaging valuable firearms •Silica beads change color from orange to green when fully saturated w/moisture & can be easily recharged back to moisture-free orange in the oven •Lasts 3 to 6 months in normal conditions before recharging is required •NOTE: 750 gram, durable vented can provides protection for up to 57 cu. ft.; 450 gram, breathable bag provides protection for up to 33 cu. ft.



Order #	MFG. #	Description	Sugg.Ret.
1922373	222178	750 Grams (Can)	\$24.99

# Remington

### REMINGTON® MODEL 500 DEHUMIDIFIER

•Works in a 500 cubic foot area •No battery or cord needed •Works up to 10 years •Non-toxic, child & pet safe •Eco-friendly



Order #	MFG. #	Sugg.Ret.
1922349	19946	\$33.33

### REMINGTON® MODEL 365 MINI DEHUMIDIFIER

•Protects up to 60 days before any recharging is necessary •Self-contained unit requires no wiring or extension cords •Protects 333 cubic feet



Order #	MFG. #	Sugg.Ret.
1919144	19950	\$27.30

### REMINGTON® REM DRI® 35 DESICCANT

•Removes moisture to prevent rust corrosion & eliminates odors in gun safes & cabinets •No electricity required •Rechargeable for multiple uses



Order #	MFG. #	Sugg.Ret.
1919145	19952	\$11.70

### REMINGTON® MOISTUREGUARD™ GUN PLUGS

•Uses Volatile Corrosion Inhibitor Technology •Protects all metals from rust & corrosion •Place in chamber or mount in gun cabinet or safe to protect guns while in storage •Hangs in safe for up to 30 cu. ft. (mounting clip included) •Can also be used as snap cap



Order #	MFG. #	Ga./Cal.	Sugg.Ret.
1022949	19463	12	\$6.40
1022950	19464	20	6.40
1210831	19468	.22	6.40
1210830	19467	Universal	6.40
<b>3-PACK, RIFLE</b>			
1022951	19465	.222-.223, .243, .243, .308, 7mm-08, .270, .30-06	6.40



**NEW**

### RHINO SAFE CO. RHINO USA

•Patent Pending Rhino Lock mechanism •Internal self adjusting, anti-tamper clutch •Anti-drill/anti-punch, over center cam & main linkage •4 sided punch protection •Tungsten Carbide drill plate (Patented) •U.L. Type 1 LA Gard electronic lock (standard) •Fire protection for 60 mins. @ 1200°F •1" diameter doorbolts •1/4" plate door w/11ga. body •Oversized hinges allow 180° opening •Free repair/replacement after burglary/fire •Door organizer w/pistol holsters & pockets •Black



**DROP SHIP**

•DEALER ONLY DROP SHIP PREPAID

Order #	MFG. #	Ext. Dim.	Sugg.Ret.
<b>26 GUN (645 LBS./25 EXTERNAL CUBIC FEET)</b>			
1925341	R6030	60"x20"x25"	\$1,699.00
<b>30 GUN (746 LBS./31.3 EXTERNAL CUBIC FEET)</b>			
1925342	R6036	60"x36"x25"	1,839.00
<b>32 GUN (900 LBS./40.5 EXTERNAL CUBIC FEET)</b>			
1925343	R7236	72"x36"x27"	2,299.00





**NEW**

### RHINO SAFE CO. BIGHORN ELX SERIES 6030

•U.L. Certified residential security container  
•U.L. Listed electric lock •California DOJ compliant •Fire protection for 70 mins. @ 1200°F •26 long gun capacity •10 large diameter doorbolts (1.25") •Extra thick 1.5" composite door •3mm steel body •Oversized hinges allow 180° opening •Free repair/replacement after burglary/fire •Door organizer w/pistol holsters & pockets •700 lbs. •24.58 external cubic feet •Black

**DROP SHIP**

•DEALER ONLY DROP SHIP PREPAID

Order #	MFG. #	Ext. Dim.	Sugg.Ret.
1923460	6030	59"x30"x24"	\$1,189.00



**NEW**

### RHINO SAFE CO. BIGHORN ELX SERIES 6039/7144

•U.L. Certified residential security container •U.L. Listed electric lock •California DOJ compliant •Fire protection for 70 mins. @ 1200°F •Large diameter doorbolts (1.5") •Extra thick 1.5" composite door •3mm steel body •Oversized hinges allow 180° opening •Free repair/replacement after burglary/fire •Door organizer w/pistol holsters & pockets •Exclusive high-strength, full width top shelf •Fabric covered reinforced box steel construction •Load rated at 110 lbs. w/less than 1/4" deflection •Black

**DROP SHIP**

•DEALER ONLY DROP SHIP PREPAID

Order #	MFG. #	Ext. Dim.	Sugg.Ret.
<b>34 GUNS - 10 DOORBOLTS (830 LBS./31.95 EXT. CUBIC FEET)</b>			
1923461	6039	59"x39"x24"	\$1,479.00
<b>48 GUNS - 14 DOORBOLTS (1100 LBS./31.95 EXT. CUBIC FEET)</b>			
1923462	7144	71"x44"x26"	1,875.00



**NEW**

### RHINO SAFE CO. BIGHORN CLASSIC SERIES 12ECBS/5928EC

•U.L. Certified residential security container  
•U.L. Listed electric lock •California DOJ compliant •Fire protection for 30 mins. @ 1200°F •Large diameter doorbolts (1") •Extra thick 1.5" composite door •2.75mm steel body •Oversized hinges allow 180° opening •Free repair/replacement after burglary/fire •Door organizer w/pistol holsters & pockets

**DROP SHIP**

•DEALER ONLY DROP SHIP PREPAID

Order #	MFG. #	Ext. Dim.	Color	Sugg.Ret.
<b>16 GUNS - 6 DOORBOLTS (308 LBS./12 EXT. CUBIC FEET)</b>				
1925338	12ECBS	55"x21"x18"	Black	\$799.00
<b>24 GUNS - 8 DOORBOLTS (435 LBS./19.12 EXT. CUBIC FEET)</b>				
1923463	5928EC-BC	59"x28"x20"	Black	899.00
1923464	5928EC-SPL	59"x28"x20"	Copper	899.00



**NEW**

### RHINO SAFE CO. BIGHORN CLASSIC SERIES 36ECBX

•U.L. Certified residential security container  
•U.L. Listed electric lock •California DOJ compliant •Fire protection for 45 mins. @ 1200°F •34 long gun capacity •12 large diameter doorbolts (1.5") •Extra thick 1.5" composite door •2.75mm steel body •Oversized hinges allow 180° opening •Free repair/replacement after burglary/fire •Door organizer w/pistol holsters & pockets •790 lbs. •21.75 external cubic feet •Black

**DROP SHIP**

•DEALER ONLY DROP SHIP PREPAID

Order #	MFG. #	Ext. Dim.	Sugg.Ret.
1923465	36ECBX	71"x36"x24"	\$1,399.00



**NEW**

### RHINO SAFE CO. UNDER BED SAFE

•Fits under most beds •Quick & close access to guns •3/16" thick steel plate door •Recessed, pry-resistant door •Backlit keypad lock •Holds up to 4 rifles •Durable baked-on powdercoat finish •12 ga. thick steel •Carpeted floor •Not intended for sale in California •125 lbs. •Dim.: 50"Lx24"Wx5.75"H

**DROP SHIP**

•DEALER ONLY DROP SHIP PREPAID

Order #	MFG. #	Sugg.Ret.
1925339	UB50	\$549.00



**NEW**

### SENTRY® SAFE SECURITY SAFE

•Programmable electronic lock w/override key •Solid steel construction •Live locking bolts help to prevent unwanted entry & access •Concealed hinges for added protection •Multi-position shelves •Key rack, bungee organizational system for storage of easy-to-misplace items •Carpeted interior •Includes bolt down kit to prevent unauthorized removal •Black •**T6-331**: 4 live-locking bolts; 2 multi-position shelves; 2.3 cubic ft. capacity; 105 lbs. •**T8-331**: 3 live-locking bolts; 2 multi-position shelves; 4.3 cubic ft. capacity; 195 lbs. •**T0-331**: 3 live-locking bolts; 3 multi-position shelves; 6.1 cubic ft. capacity; 240 lbs.

**DROP SHIP**

•DEALER ONLY DROP SHIP PREPAID

Order #	MFG. #	Ext. Dim.	Sugg.Ret.
1923435	T6-331	23.9"Hx15.4"Wx16.1"D	\$299.99
1923436	T8-331	27.7"Hx21.7"Wx19.8"D	499.99
1923437	T0-331	37.7"Hx21.7"Wx19.8"D	599.99





**NEW**

**SENTRY® SAFE  
QUICK ACCESS  
BIOMETRIC PISTOL SAFE**

•Meets CA DOJ standards for firearm safety •Quick entry backlit electronic lock, zero feedback •Compression gas strut opens door silently & holds it open for single-handed access even in confined spaces •At-the-ready pistol presentation for convenient access to firearm •Pry-resistant solid steel construction to help protect against unauthorized access to firearms •Override key for back-up access •Exterior dimensions: 3.2"Hx12"Wx9.9"D •Black



Order #	MFG. #	Lock	Sugg.Ret.
1925434	QAPIBE	Biometric	\$199.99
1923432	QAP1E	Electronic	119.99

**SENTRY®SAFE  
X055**

•8-11/16"Hx13-3/4"Wx10-3/8"D •For personal effects, jewelry, legal documents etc. •Electronic key w/override key •2 live-locking bolts •Carpeted floor •Bolt-down kit - hardware included •Black



Order #	MFG. #	Sugg.Ret.
1920368	X055	\$99.99

**SENTRY®SAFE  
X075**

•7-1/16"Hx16-15/16"Wx14-9/16"D •For personal effects, jewelry, legal documents etc. •Electronic key w/override key •2 live-locking bolts •Carpeted floor •Fits most laptops •Access for power cord •Bolt-down kit - hardware included •Black



Order #	MFG. #	Sugg.Ret.
1920369	X075	\$120.00

**SENTRY®SAFE  
X105**

•8-7/8"Hx16-15/16"Wx14-9/16"D •For personal effects, jewelry, legal documents etc. •Electronic key w/override key •2 live-locking bolts •Carpeted floor •Removable shelf •Fits most laptops •Access for power cord •Security cable feature •Bolt-down kit - hardware included •Black



Order #	MFG. #	Sugg.Ret.
1920370	X105	\$140.00

**SENTRY®SAFE  
X125**

•10-5/8"Hx16-15/16"Wx14-9/16"D •For personal effects, jewelry, legal documents etc. •Electronic key w/override key •2 live-locking bolts •Carpeted floor •Removable shelf •Fits most laptops •Access for power cord •Bolt-down kit - hardware included •Black



Order #	MFG. #	Sugg.Ret.
1920371	X125	\$150.00



**NEW**

**SNAPSAFE  
LOCK BOX**

•Easy to operate key lock •Steel security cable •Protective foam interior •Heavy steel construction •Pry-resistant •Meets TSA airline firearm guidelines



Order #	MFG. #	Size	Sugg.Ret.
1925413	5090AS-100	11.5"x8.5"	\$29.99
1925414	5080AS-200	9.5"x6.5"	27.99



**SPORTLOCK™  
TOP LOAD ELECTRONIC  
SAFELOCK**

•Over 1000 custom combinations •Hidden key override •Pre-Drilled mounting holes w/ mounting hardware included •Matte Black •Wt.: 15 pounds



Order #	MFG. #	Dimensions	Sugg.Ret.
1919863	00061	14.17"Lx 14.17"Wx 5.11"H	\$129.99

**SPORTLOCK™  
SAFELOCK DELUXE  
ELECTRONIC CODE LOCK**

•1000 Combinations-five digit electronic code lock •Sliding shelf •9-Volt DC adapter •Fully padded interior •Heavy gauge steel •Mounting holes for securing to wall of shelf •Key override •Interior light when door is open •Switch to disable nose when buttons are pushed •Spring loaded door •Needs 8 AA batteries (Not included) •Black Wt.: 11 pounds



Order #	MFG. #	Dimensions	Sugg.Ret.
1919865	00064	14"Lx 10.1"Wx 7.9"H	\$134.99

Thanks To  
**YOU**  
We've Made it This Far



All Stack-On® Cabinets are Drop Shipped Freight Prepaid.  
If Safe is shipped to a Residence or if a Liftgate is  
needed there will be a charge for each cabinet

**NEW**

### STACK-ON® FS SERIES FIRE SAFE

•Approved by CA DOJ as meeting their standards for firearm safety •2-way locking w/1" live action locking bolts - up to 5 locking points •Large steel locking bolts •Tested & verified to be fire-resistant for 30 mins. up to 1400° F by ETL •Drill-resistant, hardened steel plate located behind lock for greater security •Steel dead bolts on hinge side of safe provide added security •Patented barrel rests & standoffs provide optimal storage for long guns, especially scoped rifles •Sized to accept rifles, as well as side-by-side shotguns •Keeps scoped rifles away from walls & provides for 1-position storage •Reinforced steel doors are filled w/fire retardant material •Door stripping expands & seals when exposed to fire •Epoxy paint finish •NOTE: Electronic Lock safe includes operational lights for open, low battery warning & incorrect entry, plus time-out period after 3 failed attempts & trouble key



**DROP SHIP**

**DEALER ONLY DROP SHIP PREPAID**

Order #	MFG. #	Lock	Finish	Sugg.Ret.
<b>8 GUN (18-3/8"Wx15-1/4"Dx55"H - 1 SHELF)</b>				
1925379	FS-8-MG-C-DS	Combination	Green	\$628.95
1925380	FS-8-MB-E-DS	Electronic	Black	649.95
<b>FULLY CONVERTIBLE INTERIOR</b>				
<b>14 GUN (19"Wx20-1/4"Dx55"H - 4 SHELVES)</b>				
1925381	FS-14-MG-C-DS	Combination	Green	741.95
1925382	FS-14-MB-E-DS	Electronic	Black	761.95
<b>24 GUN (29-1/4"Wx20-1/4"Dx55"H - 4 SHELVES)</b>				
1925383	FS-24-MG-C-DS	Combination	Green	1,022.95
1925384	FS-24-MB-E-DS	Electronic	Black	1,043.95
<b>36 GUN (35-1/4"Wx26-3/4"Dx55"H - 6 SHELVES, 3-SPOKE HANDLE)</b>				
1925385	FS-36-MG-C-DS	Combination	Green	1,396.95
1925386	FS-36-MB-E-DS	Electronic	Black	1,431.95

**NEW**

### STACK-ON® ELITE SERIES FIRE SAFE

•Approved by CA DOJ as meeting their standards for firearm safety •4-way locking w/1.5" live action locking bolts - up to 10 locking points •Large steel locking bolts •Tested & verified to be fire-resistant for 30 mins. up to 1400° F by ETL •Drill-resistant, hardened steel plate located behind lock for greater security •Steel dead bolts on hinge side of safe provide added security •Patented barrel rests & standoffs provide optimal storage for long guns, especially scoped rifles •Sized to accept rifles, as well as side-by-side shotguns •Keeps scoped rifles away from walls & provides for 1-position storage •Reinforced steel doors are filled w/fire retardant material •Door stripping expands & seals when exposed to fire •Epoxy paint finish •NOTE: Electronic Lock safe includes operational lights for open, low battery warning & incorrect entry, plus time-out period after 3 failed attempts & trouble key



**DROP SHIP**

**DEALER ONLY DROP SHIP PREPAID**

Order #	MFG. #	Lock	Finish	Sugg.Ret.
<b>16 GUN (22-3/8"Wx20-3/4"Dx595"H - 1 SHELF, 8 BOLTS)</b>				
1925387	E-16-MG-C-DS	Combination	Green	\$915.95
1925388	E-16-MB-E-DS	Electronic	Black	958.95

Order #	MFG. #	Lock	Finish	Sugg.Ret.
<b>FULLY CONVERTIBLE INTERIOR/DOOR STORAGE SYSTEM</b>				
<b>24 GUN (29-1/4"Wx20-1/4"Dx59"H - 4 SHELVES, 8 BOLTS)</b>				
1925389	E-24-MG-C-S-DS	Combination	Green	1,124.95
1925390	E-24-MB-E-S-DS	Electronic	Black	1,194.95
<b>36 GUN (35-1/4"Wx26-3/4"Dx59"H - 6 SHELVES, 10 BOLTS)</b>				
1925391	E-36-MG-C-S-DS	Combination	Green	1,507.95
1925392	E-36-MB-E-S-DS	Electronic	Black	1,481.95
<b>48 GUN (43"Wx26"Dx59"H - 8 SHELVES, 10 BOLTS)</b>				
1925393	E-48-MG-C-S-DS	Combination	Green	1,754.95
<b>66 GUN (50-1/2"Wx31"Dx62"H - 8 SHELVES, 10 BOLTS)</b>				
1925394	E-66-MB-E-S-DS	Electronic	Black	2,643.95

**NEW**

### STACK-ON® STEEL SECURITY SERIES SAFE

•Approved by CA DOJ as meeting their standards for firearm safety •2-way locking w/1" live action locking bolts - up to 5 locking points •Large steel locking bolts, concealed hinges & hinge side steel dead bolts provide added security •Drill-resistant, hardened steel plate located behind lock for greater security •Patented barrel rests & standoffs provide optimal storage for long guns, especially scoped rifles •Sized to accept rifles, as well as side-by-side shotguns •Keeps scoped rifles away from walls & provides for 1-position storage •Large steel handle w/rubber grip •Epoxy paint finish •NOTE: Electronic Lock safe includes operational lights for open, low battery warning & incorrect entry, plus time-out period after 3 failed attempts & trouble key



**DROP SHIP**

**DEALER ONLY DROP SHIP PREPAID**

Order #	MFG. #	Lock	Finish	Sugg.Ret.
<b>8 GUN (15-1/2"Wx12-3/8"Dx53"H - 1 SHELF, 3 BOLTS)</b>				
1925395	SS-8-MG-C-DS	Combination	Green	\$472.95
<b>10 GUN (15-7/8"Wx15-1/8"Dx55-1/8"H - 1 SHELF)</b>				
1925396	SS-10-MG-C-DS	Combination	Green	539.95
1925397	SS-10-MB-E-DS	Electronic	Black	581.95
<b>16 GUN (20-7/8"Wx20-1/16"Dx55-1/8"H - 1 SHELF, 2 TRAY ORGANIZERS)</b>				
1925398	SS-16-MG-C-DS	Combination	Green	636.95
1925399	SS-16-MB-E-DS	Electronic	Black	675.95
<b>FULLY CONVERTIBLE INTERIOR</b>				
<b>22 GUN (26-13/16"Wx17-5/8"Dx55"H - 4 SHELVES)</b>				
1925400	SS-22-MG-C-DS	Combination	Green	716.95
1925401	SS-22-MB-E-DS	Electronic	Black	738.95

### STACK-ON® LOW PROFILE QUICK ACCESS PERSONAL SAFE

•Tested and listed as a California DOJ Firearm Safety Device •Slim line Personal Safe with removable mounting plate •Locking plate can be affixed to a location & the safe can be secured to the plate or removed by accessing a bolt inside the safe •Can be mounted in the trunk of a car & then moved to a different location in the house or pistol range •Pre-drilled holes for mounting to the floor or a shelf with the locking plate •Holes included in the top for mounting under the bed or in a locker •Fastening hardware included



Order #	MFG. #	Size	Sugg.Ret.
1920289	QAS-1304	9-7/8"Wx13"Dx4-1/4"H	\$93.99

### STACK-ON® DRAWER SAFE w/ELECTRONIC LOCK

•Tested and listed as a California DOJ Firearm Safety Device •2 live action locking bolts and concealed hinges •Fastening hardware included



Order #	MFG. #	Size	Sugg.Ret.
1919905	PDS-500	11-13/16"Wx8-5/8"Dx4-3/8"H	\$63.99

SAFES, LOCKS  
& PERSONAL  
PROTECTION





All Stack-On® Cabinets are Drop Shipped Freight Prepaid.  
If Safe is shipped to a Residence or if a Liftgate is needed there will be a charge for each cabinet

### STACK-ON® PERSONAL SAFE w/ELECTRONIC LOCK

•Tested and listed as a California DOJ Firearm Safety Device •Includes 1 removable shelf •Foam padded bottom and shelf •2 live action locking bolts and concealed hinges •Fastening hardware included



Order #	MFG. #	Size	Sugg.Ret.
1918570	PS-514	13-13/16"Wx9-13/16"Dx9-13/16"H	\$94.99
1918569	PS515	15"Wx11-13/16"Dx11-13/16"H	129.99

### STACK-ON® DRAWER SAFE w/BIOMETRIC LOCK

•Solid steel, pry resistant door has concealed hinges & two live-action locking bolts •Biometric lock can be programmed to accept up to 32 different fingerprints (provides greater security & quicker access to safe's contents) •Includes electronic lock & hidden trouble key •Gas lift on door pops lid open when locking bolts are released & holds lid in place when open •Egg crate foam padded bottom •Pre-drilled holes for mounting to floor or shelf •Fastening hardware included •Tested & listed as a California DOJ firearm safety device



Order #	MFG. #	Size	Sugg.Ret.
1922634	PS-5-B	13-7/8"Wx11-1/2"Dx4-1/2"H	\$149.99

### STACK-ON® PERSONAL SAFE w/BIOMETRIC LOCK

•Solid steel, pry resistant door has concealed hinges & two live-action locking bolts •Biometric lock can be programmed to accept up to 32 different fingerprints (provides greater security & quicker access to safe's contents) •Includes electronic lock, hidden trouble key & removable, adjustable shelf •Foam padded bottom & shelf •Tested & listed as a California DOJ firearm safety device •Black finish



Order #	MFG. #	Size	Sugg.Ret.
1922725	PS-10B	13-7/8"Wx9-7/8"Dx9-7/8"H	\$139.99

**NEW**

### STACK-ON® QUICK ACCESS SAFE w/BIOMETRIC LOCK

•Biometric locks can accept 28 different fingerprints w/backup key •Biometric reader is easy to use & program •Provides greater security - no combinations to remember •Holds standard sized pistols & other valuables •Foam padded interior •Black



Order #	MFG. #	Size	Sugg.Ret.
1923236	QAS-450-B	10"Wx12-1/4"Dx5-5/8"H	\$194.99
<b>w/REMOVABLE SHELF</b>			
1923234	QAS-1200-B	10"Wx12-1/4"Dx8-1/4"H	219.99

### STACK-ON® QUICK ACCESS SAFE w/ELECTRONIC LOCK

•Electronic lock allows for 3 to 8 digit combination to be programmed in •Includes back-up trouble key •Door opens downward w/one steel cam locking point •Holds standard sized pistol & valuables •Foam padded bottom protects contents from scratching •Safe has pre-drilled holes for mounting to wall, shelf or floor •Tested & listed as a California DOJ firearm safety device •Black finish



Order #	MFG. #	Size	Sugg.Ret.
1923235	QAS-450	10"Wx12-1/4"Dx5-5/8"H	\$114.99
<b>w/REMOVABLE SHELF</b>			
1922724	QAS-1200	10"Wx12-1/4"Dx8-1/4"H	121.99

### STACK-ON® QUICK ACCESS DRAWER SAFE w/ELECTRONIC LOCK

•Electronic lock allows for 3 to 8 digit combination to be programmed in •Includes back-up trouble key •Drawer pops out when locking mechanism is released •Ball bearing drawer slide allows the drawer to slide in & out without binding •Holds standard sized pistol & valuables •Foam padded bottom protects contents from scratching •Safe can be secured w/included steel cable (1500 lb. test) or mounted to shelf or floor •Cable is secured when drawer is in place •Fastening hardware included •Tested & listed as a California DOJ firearm safety device



Order #	MFG. #	Size	Sugg.Ret.
1922636	QAS-1000	10"Wx12-1/4"Dx4-5/8"H	\$119.99

### STACK-ON® PORTABLE CASE w/ELECTRONIC LOCK

•Electronic lock allows for 3 to 8 digit combination to be programmed in •Includes back-up trouble key •Slim line design allows for storage in briefcase & under the seat of many cars & trucks •Foam padded bottom protects contents from scratching •Safe can be secured w/included steel cable (1500 lb. test) •Meets TSA airline firearm guidelines



Order #	MFG. #	Size	Sugg.Ret.
1922635	PC-650	11"Wx8-1/4"Dx2-3/8"H	\$74.99
1923238	PC-900	12-1/8"Wx12-1/2"Dx2-5/8"H	91.99

**NEW**

### STACK-ON® PORTABLE CASE w/BIOMETRIC LOCK

•Biometric locks can accept 28 different fingerprints w/backup key •Biometric reader is easy to use & program •Provides greater security - no combinations to remember •Slim-line design allow for storage under the seat of many cars & trucks •Foam padded interior protects contents from scratching •Meets TSA airline guidelines •Designed to be secured w/steel cable (1500 lb. test) - cable included



Order #	MFG. #	Size	Sugg.Ret.
1923237	PC-650-B	11"Wx8-1/4"Dx2-3/8"H	\$169.99
1923239	PC-900-B	12-1/8"Wx12-1/2"Dx2-5/8"H	186.99





All Stack-On® Cabinets are Drop Shipped Freight Prepaid.  
If Safe is shipped to a Residence or if a Liftgate is  
needed there will be a charge for each cabinet

### SECURITY PLUS GUN CABINETS

Superior 3-point locking system provides greater security. Drill resistant, key coded, tubular key lock. Full length welded & staked piano hinge. Pre-drilled mounting holes allow easy attachment to the floor or wall. Non-marring foam padded barrel rests & bottom. Steel pegboard on inside of door allows for hanging storage of vest, hats, holsters. Durable baked epoxy finish. Flush mount bottom for easier fastening to floor. Pre-drilled top mounting holes align with Stack-On® Pistol/Ammo Cabinet (GC-900). Fastening & finishing hardware included

### STACK-ON® AMMO STEEL CABINET

•Steel construction w/hunter green gloss paint finish & gold accents •Locking mechanism passes through steel door & secured behind steel door frame for added security •Fully lockable w/key coded, double bitted lock •Includes 2 removable shelves & foam padded bottom •Pre-drilled mounting holes allow for easy attachment to floor, ceiling, wall or other pre-assembled Security Plus gun cabinets •Fastening hardware is included •California approved •Size: 21"Wx10"Dx18"H



Order #	MFG. #	Sugg.Ret.
1922865	GCG-900	\$99.00

### STACK-ON® SECURITY PLUS™ SECURITY CABINET

•21"Wx10"Dx55"H •Heavy gauge steel •Holds 8 firearms up to 54" tall •Foam padded barrel rests & bottom •Removable shelf is positioned in the front of the unit so longer guns can be stored along the back wall •3-Point locking system w/key coded lock



**DROP SHIP**

**DEALER ONLY DROP SHIP**

### PREPAID

Order #	MFG. #	Color	Sugg.Ret.
1909153	GCG-908	Green	\$342.45

### STACK-ON®/ SECURITY PLUS™ PISTOL/AMMO SECURITY ACCESSORY CABINET

For pistols, ammo, supplies and valuables. Can be mounted to wall, ceiling, floor, or top of Stack-On 8-Gun or 12-Gun Cabinets. 3 Shelves, all foam lined. Heavy 16 gauge all steel construction. 3-Point locking system. 21"Wx10"Dx18"H.



Order #	MFG. #	Sugg.Ret.
1909151	GC-900-5	\$99.99

### STACK-ON® RECHARGEABLE CORDLESS DEHUMIDIFIER

•Great for use in safes & security cabinets  
•Absorbs excess moisture w/o having to drill holes or run electrical cords through a safe  
•Moisture gauge on front of the unit indicates when it needs to be recharged - no batteries needed •Can pull excess moisture from 100 cubic feet for 4 to 6 weeks before it needs to be recharged



Order #	MFG. #	Sugg.Ret.
1920741	SPAD-100	\$29.99



**WINCHESTER**

### WINCHSTER® LEGACY™ PREMIER SERIES

•5-spoke vault handle •Massive vault style hinges •Door panel organizer •Thick interior shelves •Premium gray pindot interior •Power Docking System (PDS) - (2) 110v power outlets w/Ethernet & USB •Beveled edge body construction •Fire Protection: 2.5 hrs. @ 1400°F (fire rating); 5 layers of fireboard in door; 4 layers of fireboard in body; Double layer of Palusol® heat expandable door seal; Upgraded composite door construction w/0.25" solid steel outer plate; External door hinge allows full fireboard protection & 180° door swing •Burglary Protection: UL listed RSC; UL listed lock std.; 10 Ga. steel body construction; Drill resistant hard plate 60-61Rc; Auxiliary relocker; 4-way locking bolt system; 2" solid steel locking bolts; Up to 20 locking bolts; Pry-resistant recessed door; Reinforced steel return door jam; Chamberlain disk protects lock •Wt. (safe): 925 lbs. (26-28 LG), 1530 lbs. (53-54 LG)



**DROP SHIP** •DROP SHIP FREIGHT PREPAID -  
NO RESIDENTIAL DELIVERY

Order #	MFG. #	Holds	Interior	Sugg.Ret.
<b>LA GARD ELECTRONIC LOCK</b>				
<b>BLACK GLOSS EXTERIOR</b>				
1922949	L-6030-26-7-E D	26-28 LG	54"x26"x19"	\$2,499.00
1922953	L-7242-53-7-E D	53-54 LG	66"x37"x21"	3,799.00
<b>GRANITE GLOSS EXTERIOR</b>				
1922951	L-6030-26-11-E D	26-28 LG	54"x26"x19"	2,499.00
1922955	L-7242-53-11-E D	53-54 LG	66"x37"x21"	3,799.00
<b>SG® MECHANICAL LOCK</b>				
<b>BLACK GLOSS EXTERIOR</b>				
1922950	L-6030-26-7-M D	26-28 LG	54"x26"x19"	2,499.00
1922954	L-7242-53-7-M D	53-54 LG	66"x37"x21"	3,799.00
<b>GRANITE GLOSS EXTERIOR</b>				
1922952	L-6030-26-11-M D	26-28 LG	54"x26"x19"	2,499.00
1922956	L-7242-53-11-M D	53-54 LG	66"x37"x21"	3,799.00

### WINCHSTER® SILVERADO® PREMIER SERIES

•5-spoke vault handle •Heavy duty strap hinges •Door panel organizer •Thick interior shelves •Gray pindot fabric interior •Power Docking System (PDS) - (2) 110v power outlets w/Ethernet & USB •Beveled edge body construction •Fire Protection: 2 hrs. @ 1400°F (fire rating); 5 layers of fireboard in door; 4 layers of fireboard in body; Double layer of Palusol® heat expandable door seal; Upgraded composite door construction w/0.25" solid steel outer plate; External door hinge allows full fireboard protection & 180° door swing •Burglary Protection: UL listed RSC; UL listed lock std.; 10 Ga. steel body construction; Drill resistant hard plate 60-61Rc; Auxiliary relocker; 4-way locking bolt system; 1.5" solid steel locking bolts; Up to 18 locking bolts; Pry-resistant recessed door; Reinforced steel return door jam; Chamberlain disk protects lock •Wt. (safe): 800 lbs. (23-24 LG), 1080 lbs. (38-51 LG), 1345 lbs. (49-54 LG)



**DROP SHIP** •DROP SHIP FREIGHT PREPAID -  
NO RESIDENTIAL DELIVERY

Order #	MFG. #	Holds	Interior	Sugg.Ret.
<b>LA GARD ELECTRONIC LOCK</b>				
<b>BLACK GLOSS EXTERIOR</b>				
1922957	S-6030-23-7-E D	23-24 LG	55"x26"x15"	\$1,599.00
1922961	S-6040-38-7-E D	38-51 LG	66"x35"x17"	2,299.00
1922965	S-7242-49-7-E D	49-54 LG	67"x38"x18"	2,699.00

continued next page

**WINCHSTER®  
SILVERADO® PREMIER SERIES**

continued from previous page

Order #	MFG. #	Holds	Interior	Sugg.Ret.
<b>GRANITE GLOSS EXTERIOR</b>				
1922959	S-6030-23-11-E D	23-24 LG	55"x26"x15"	1,599.00
1922963	S-6040-38-11-E D	38-51 LG	66"x35"x17"	2,299.00
1922967	S-7242-49-11-E D	49-54 LG	67"x38"x18"	2,699.00
<b>SG® MECHANICAL LOCK</b>				
<b>BLACK GLOSS EXTERIOR</b>				
1922958	S-6030-23-7-M D	23-24 LG	55"x26"x15"	1,599.00
1922962	S-6040-38-7-M D	38-51 LG	66"x35"x17"	2,299.00
1922966	S-7242-49-7-M D	49-54 LG	67"x38"x18"	2,699.00
<b>GRANITE GLOSS EXTERIOR</b>				
1922960	S-6030-23-11-M D	23-24 LG	55"x26"x15"	1,599.00
1922964	S-6040-38-11-M D	38-51 LG	66"x35"x17"	2,299.00
1922968	S-7242-49-11-M D	49-54 LG	67"x38"x18"	2,699.00

**WINCHSTER®  
BIG DADDY™ SERIES**

•3-spoke vault handle •Heavy duty strap hinges •Door panel organizer •Extra wide body for maximum gun storage •Gray automotive grade interior •Beveled edge body construction •Fire Protection: 75 mins. @ 1400°F (fire rating); 5 layers of fireboard in door; 3 layers of fireboard in body; Palusol® heat expandable door seal; Upgraded composite door construction; External door hinge allows full fireboard protection & 180° door swing •Burglary Protection: UL listed RSC; UL listed lock std.; 12 Ga. steel body construction; Drill resistant hard plate 60-61Rc; Auxiliary relocker; 4-way locking bolt system; 1.5" solid steel locking bolts; Up to 14 locking bolts; Pry-resistant recessed door; Reinforced steel return door jam; Chamberlain disk protects lock •Wt.: 925 lbs.



**DROP SHIP** •DROPSHIP FREIGHT PREPAID - NO RESIDENTIAL DELIVERY

Order #	MFG. #	Holds	Interior	Sugg.Ret.
<b>LA GARD ELECTRONIC LOCK</b>				
<b>BLACK GLOSS EXTERIOR</b>				
1922969	BD-6042-36-7-E D	36-54 LG	56"x38"x16"	\$1,799.00
<b>GRANITE GLOSS EXTERIOR</b>				
1922971	BD-6042-36-11-E D	36-54 LG	56"x38"x16"	1,799.00
<b>SG® MECHANICAL LOCK</b>				
<b>BLACK GLOSS EXTERIOR</b>				
1922970	BD-6042-36-7-M D	36-54 LG	56"x38"x16"	1,799.00
<b>GRANITE GLOSS EXTERIOR</b>				
1922972	BD-6042-36-11-M D	36-54 LG	56"x38"x16"	1,799.00

**WINCHSTER®  
RANGER™ DELUXE SERIES**

•3-spoke vault handle •Heavy duty strap hinges •Door panel organizer •Gray automotive grade interior •Fire Protection: 1 hr. @ 1400°F (fire rating); 3 layers of fireboard in door; 2 layers of fireboard in body; Palusol® heat expandable door seal; External door hinge allows full fireboard protection & 180° door swing •Burglary Protection: UL listed RSC; UL listed lock std.; 12 Ga. steel body construction; Drill resistant hard plate 60-61Rc; Auxiliary relocker; 4-way locking bolt system; 1.25" solid steel locking bolts; Up to 18 locking bolts; Pry-resistant recessed door; Reinforced steel return door jam; Chamberlain disk protects lock •Wt. (safe): 560 lbs. (19-24 LG), 745 lbs. (30-31 LG), 985 lbs. (45-51 LG)



**DROP SHIP** •DROPSHIP FREIGHT PREPAID - NO RESIDENTIAL DELIVERY

Order #	MFG. #	Holds	Interior	Sugg.Ret.
<b>LA GARD ELECTRONIC LOCK</b>				
<b>BLACK GLOSS EXTERIOR</b>				
1922973	R-6028-19-7-E D	19-24 LG	56"x25"x14"	\$1,299.00
1922977	R-6036-31-7-E D	30-31 LG	56"x32"x16"	1,599.00
1922981	R-7240-45-7-E D	45-51 LG	69"x36"x18"	1,999.00

**Order # MFG. # Holds Interior Sugg.Ret.**  
**LA GARD ELECTRONIC LOCK**

<b>GRANITE GLOSS EXTERIOR</b>				
1922975	R-6028-19-11-E D	19-24 LG	56"x25"x14"	1,299.00
1922979	R-6036-31-11-E D	30-31 LG	56"x32"x16"	1,599.00
1922983	R-7240-45-11-E D	45-51 LG	69"x36"x18"	1,999.00

**SG® MECHANICAL LOCK**

<b>BLACK GLOSS EXTERIOR</b>				
1922974	R-6028-19-7-M D	19-24 LG	56"x25"x14"	1,299.00
1922978	R-6036-31-7-M D	30-31 LG	56"x32"x16"	1,599.00
1922982	R-7240-45-7-M D	45-51 LG	69"x36"x18"	1,999.00

**GRANITE GLOSS EXTERIOR**

1922976	R-6028-19-11-M D	19-24 LG	56"x25"x14"	1,299.00
1922980	R-6036-31-11-M D	30-31 LG	56"x32"x16"	1,599.00
1922984	R-7240-45-11-M D	45-51 LG	69"x36"x18"	1,999.00

**NEW**

**WINCHSTER®  
PONY®19 SERIES**

•UL® Listed residential security container •Drill resistant hard plate w/auxiliary relocker •1" locking bolts •10 locking bolts •2-way locking bolt system •Convertible interior •2 removable side shelves •2 interior shelf covers •Gray automotive grade carpet •Granite gloss exterior •Welded external steel strap hinges w/ 180° swing •Single lever handle •435 lbs •Fire rating: 30 minutes @ 1200° F w/ Palusol® door seal

**DROP SHIP**



Order #	MFG. #	Holds	Exterior	Sugg.Ret.
1925344	P-6028-19-11-UK	12-24 LG	60"x28"x20"	\$899.00

**NEW**

**WINCHSTER®  
PONY®42 SERIES**

•UL® Listed residential security container •Drill resistant hard plate w/auxiliary relocker •1" locking bolts •10 locking bolts •2-way locking bolt system •Convertible interior •4 removable side shelves •3 interior shelf covers •Gray automotive grade carpet •Granite gloss exterior •Welded external steel strap hinges - 180° swing •Single lever handle •Fire rating: 30 minutes @ 11 1200° F w/ Palusol® Door seal •Wt: 725 lbs •5 yr. warranty

**DROP SHIP**



Order #	MFG. #	Holds	Exterior	Sugg.Ret.
1925345	P-7240-42-11-UK	42 LG	75"x42"x25"	\$1,399.00

**NEW**

**WINCHSTER®  
DEPUTY 14 SERIES**

•UL listed, S&G mechanical combination lock •Exceeds California DOJ requirements •14 Ga. steel body construction •Drill-resistant hard plate 60-61 Rc •2-way locking bolt system •1" solid steel locking bolts •8 locking bolts •Pry-resistant recessed door •Reinforced steel return door jamb •20 minutes fire protection @ 1200°F •2 layers of fireboard in door •1 layer of fireboard in body •Palusol® heat expandable door seal •Composite door construction •External door hinge allows full fireboard protection & 180° door swing •Welded external cast steel strap hinges •Convertible interior w/adj. side shelves •Interior shelf covers (covers each gun rack) •Granite Gloss finish •LA Gard electronic lock •3 spoke vault handle •Wt.: 300 lbs.

**DROP SHIP**

•DEALER ONLY DROPSHIP PREPAID

Order #	MFG. #	Holds	Exterior	Sugg.Ret.
1925366	D6022-14-11-UK	18 LG	60"x22"x18"	\$699.00





### WINCHSTER® eVAULT™ BIOMETRIC 3.0™

•Biometric pistol safe holds up to 15 fingerprints in nonvolatile memory & allows you access in under 2 seconds (under A/C power) •99.9% reliable, 3rd. Gen. finger-print reader (single finger operation) •Utilizes active reader vs. optic scanner •Easy to start up & program •Scratch resistant, padded interior •Includes A/C power supply •CA DOJ approved •1-year limited warranty •Burglary Protection: Solid state electronics; Spring loaded door; 16 Ga. solid steel construction; Patented lock & latch mechanism; Impact resistant hard plate to protect electronics; 2-piece body construction w/blind seam; 9v battery back-up system (battery not included) •Cubic Size: 0.25 cf •Wt.: 16 lbs.



**DROP SHIP** •DROP SHIP FREIGHT PREPAID -  
NO RESIDENTIAL DELIVERY

Order #	MFG. #	Holds	Interior	Sugg.Ret.
1922985	EV-1200-B	2 HG	4"x9.5"x11"	\$299.00

## GUN LOCKS



### NEW GUNVAULT® MAGVAULT™

•Unique design fits in the magazine well & locks in place quickly •Easy to operate key lock system •Cartridges cannot be inserted or chambered when MagVault is in place •Fits virtually all .223/5.56 AR carbine rifles •High-visibility orange color for immediate safety recognition



Order #	MFG. #	Sugg.Ret.
1029202	AR-01	\$14.99

### GUNVAULT® SHOTGUN BREECHVAULT

•Easy-to-mount, easy-to-use key lock system •Fits Winchester®, Remington® & Mossberg® pump shotguns •Made w/extremely tough glass reinforced nylon for maximum durability •CA DOJ approved



Order #	MFG. #	Sugg.Ret.
1023394	BV-01	\$19.95



### HOPPE'S® LED KEY

•Allows quick location & unlocking in the dark •Prevents unauthorized use of firearm •Exclusive features allow you to locate & unlock firearm in dark or dimly lit rooms •Bright fluorescent safety orange casing color •Key has LED light to quickly place key into slot •No more fumbling in the dark •Includes one LED & one standard key •One year battery life, easy battery replacement with A389 battery



Order #	MFG. #	Sugg.Ret.
1019207	L1	\$11.95

## Master Lock®



### MASTER LOCK® "SET-YOUR-OWN-COMBINATION" TRIGGER GUN LOCK

•Keyless •Easy to install and set •Positive locking with adjustable ratchet mechanism •Special cushion pads protect gun's finish from marring or scratching •Fits many handguns, rifles and shotguns



Order #	MFG. #	Sugg.Ret.
1020240	94DSPT	\$13.49

### MASTER LOCK® CABLE GUN LOCK

•1-5/16" laminated steel body for superior strength •14" steel cable resists cutting •4-pin tumbler cylinder helps resist picking •Dead-locking, anti-rap mechanism defeats physical attacks •Vinyl covers on lock and cable prevent scratching



Order #	MFG. #	Sugg.Ret.
1020241	99DSPT	\$6.95

### MASTER LOCK® ARMORED CABLE GUN LOCK

•Requires user to unload firearm before installing, helps prevent accidental discharge •Usable on most revolvers, pistols, rifles and shotguns •Small diameter cable fits .22 caliber firearms •Case-hardened laminated steel body resists attacks



Order #	MFG. #	Type	Sugg.Ret.
1020068	107DSPT	Keyed Differently	\$9.99
1020069	107KADSPT-P250	Keyed Alike	10.99

### MASTER LOCK® WARDER PADLOCK

•1" wide, laminated steel body •Steel shackle provides strong cut resistance •Warded locking mechanism minimizes jamming from dirt & grime



Order #	MFG. #	Style	Sugg.Ret.
1021432	10D	Keyed Differently	\$2.69



## Master Lock®

### MASTER LOCK® ADJUSTABLE PADLOCK

•1-3/4" wide, laminated steel body •Standard steel, adjustable shackle ensures snug fit to locked item  
•Warded locking mechanism minimizes jamming from dirt & grime



Order #	MFG. #	Style	Sugg.Ret.
1021431	510D	Keyed Differently	\$7.49

### MASTER LOCK® GUN LOCK

•Positive locking with adjustable ratchet mechanism •Easy to attach, lock •Incorporates pin tumbler locking cylinder •2 brass keys •Special cushioned pads protect gun's finish



Order #	MFG. #	Style	Sugg.Ret.
1021429	90DSPT	Keyed Differently	\$11.99
1021430	90KADSPT-PT250	Keyed Alike	13.99



### MOSSBERG® THE LOC-BOX™

•Provides reliable, effective way to help prevent unwanted access •Gives added level of deterrence against theft •Insures firearm remains protected, secure & safe •Convenient wall mounting system provides quick installation •13-gauge steel construction •Rubber coated components & pre-cut, self-adhesive rubber bumpers •Easy-to-use key operated locking mechanism •Includes steel constructed "muzzle hook" that aids in preventing unauthorized users from gaining leverage in attempt to access weapon •"Chamber hook" inhibits operation of action & the ability to load firearm while secured with the Loc-Box •FITS: Pump-Actions-Maverick® 88™, 91™; Mossberg® HS 410™, 500®, 590®, 590DA®; Remington® 870™, Winchester® 1300® and Semi-Autos-Mossberg® 5500™, 9200™, Remington® 1100™, 11-87™



Order #	MFG. #	Sugg.Ret.
1019197	95092	\$46.00



### OMEGA™ INTERNAL GUNLOCKS

•Chamber-specific gunlock •Invisible to naked eye keeps them hidden from unauthorized users •Only unlocks with its key •Locks fit most popular calibers



Order #	MFG. #	Caliber	Packaged	Sugg.Ret.
<b>AUTOMATIC-PISTOL HANDGUN CHAMBER GUNLOCKS &amp; CHILD RESISTANT FOLDING KEY</b>				
1024654	AP022101	.22 LR	Poly Bag	\$19.99
1024656	AP380101	.380 ACP	Poly Bag	19.99
1024256	AP0091001	9mm	Poly Bag	19.99
1024257	AP0401001	.40 S&W	Poly Bag	19.99
1024258	AP0451001	.45 ACP	Poly Bag	19.99
<b>REVOLVER CHAMBER GUNLOCKS &amp; CHILD RESISTANT FOLDING KEY (*Note: Keys fit up to 6" barrels)</b>				
1024658	RV044101	.44/.44M	Poly Bag	19.99

## Remington®



### REMINGTON® CALIFORNIA APPROVED CABLE LOCK

•California-approved cable lock •Wire cable is protected by hardened steel beads offering flexibility with protection against cutting and sawing •Hardened steel laminated lock body •"Ball-Lock" cable retaining system allows the user to secure the cable into the lock body easily •Brass 4-pin tumbler lock plug

Order #	MFG. #	Sugg.Ret.
1020092	18364	\$8.30

### REMINGTON® TRIGGER BLOCK

•Inexpensive investment •Invaluable for safety  
•Blocks off trigger assembly •Securely locks with key



Order #	MFG. #	Sugg.Ret.
1019240	18491	\$7.00
<b>PACK OF 3</b>		
1019241	19439	19.90

**NEW**

### REMINGTON® RAC MOUNTABLE SECURED STORAGE SYSTEM

•Reliable, dependable anti-theft storage device •Tempered steel construction withstands 4700 lbs. of force •Hidden mounting system makes it tamper-proof •Installs in vehicle & mounts to any structural foundation (hidden or visible) •Subtle design can be used to display firearm & secure it for only you to take down •Secures 97% of firearms w/trigger guard •GSA Approved & CA Compliant •System includes Remington® RAC mountable storage rack base, (3) mounting plates, key & mounting hardware



Order #	MFG. #	Model	Sugg.Ret.
1923095	17842	3" (Single Firearm)	\$70.00
1923096	17843	5" (Multiple Firearms)	90.00

## SHOT LOCK™



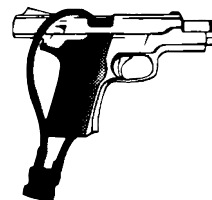
### SHOT LOCK™ D.O.J. CALIFORNIA APPROVED CABLE LOCK

•13" heavy-duty armored cable lock w/protective cable covering •Hardened body •Brass pin tumbler •2 brass nickel-plated keys •Fits most revolvers, semi-autos, shotguns & rifles •NOTE: Does not fit lever actions or O&U's

Order #	MFG. #	Sugg.Ret.
1019528	10000PTR-2	\$8.99

### SHOT LOCK™ KEYED CABLE LOCK

•Keyed alike •13" laminated cable keyed padlock •Vinyl-covered cable prevents damage to firearms •Longer cable makes lock suitable for most revolvers, semi-autos, shotguns & rifles



Order #	MFG. #	Sugg.Ret.
1018575	7000	\$8.99



# SHOT LOCK™

## SHOT LOCK™ KEYED GUN LOCK

- Durable metal alloy construction
- Automatic "push together" installation
- Fits long and handguns

Order #	MFG. #	Style	Ct.	Sugg.Ret.
1017254	5000	Keyed Differently	1	\$8.39
1017470	5000KA	Keyed Alike	10	90.71



## SHOT LOCK™ TRIGGER LOCK

- Lexan polycarbonate construction
- Complies w/new laws on gun storage
- Mounts over trigger guard
- Fits most firearms except lever actions
- Tightens w/special key

Order #	MFG. #	Sugg.Ret.
1017255	1000/2	\$1.54



## PERSONAL PROTECTION DEVICES



The Mace Company

## MACE® BRAND COUNTER TOP DISPLAY

- Effectively showcases 12 units of Mace® Brand products
- Increase exposure & sales on counter tops & at check-out lines
- CONTAINS: 6 ea. PepperGard® & 6 ea. Mark VII OC-C

Order #	MFG. #	Sugg.Ret.
1604217	80162	\$215.99



## MACE® BRAND SCREECHER EMERGENCY ALARM

- Screecher aerosol alarm emits an ear-piercing shriek
- Push-top activator
- Convenient size for pocket or purse
- 10 gram unit contains approximately 30 short blasts.

Order #	MFG. #	Sugg.Ret.
1606268	80145	\$9.95



## MACE® BRAND BEAR PEPPER MACE™ SPRAY

- Protect yourself against possible bear attacks
- 260 gram unit empties in approximately 5.4 seconds
- Magnum Fogger sprays up to 30 feet.

Order #	MFG. #	Sugg.Ret.
1603603	80346	\$44.95



## MACE® BRAND MUZZLE® CANINE REPELLENT

- EPA approved
- Safe, effective & humane
- Velcro-like attachment
- Flip-top safety cap, finger-grip dispenser, belt clip and keychain
- Sprays up to 10 feet
- 17 gram unit contains 10 one-second bursts

Order #	MFG. #	Pack	Sugg.Ret.
1604262	80146	Single Unit	\$14.95



NEW

## MACE® BRAND KEYGUARD®

- Refillable self defense spray unit includes a key ring
- 3 gram unit contains approximately 6 short bursts of 10% OC pepper formula & sprays up to 5 feet
- Approx. 3" long, compact design makes it convenient to carry
- Features a hinged safety cap that flips open to reveal the actuator button, & an orientation tab that allows you to feel when the unit is properly aimed

Order #	MFG. #	Color	Sugg.Ret.
1606488	80365	Pink	\$19.95
1606489	80366	Black	19.95



## MACE® BRAND HOTPINK MACE DEFENSE SPRAY

- Personal model
- 10% OC Pepper: maximum strength formula
- 1.4% Capsaicinoids concentration
- Flip-top safety cap: prevents accidental discharge
- Finger grip dispenser: for accurate aim
- Easy-to-carry: key chain & belt clip
- Contains up to 15 short bursts (depending on size)

Order #	MFG. #	Size	Range	Sugg.Ret.
1605794	80353-2	12 gr.	6-12'	\$16.95
1605051	80347	18 gr.	10-12'	18.95
1605560	80349	17 gr.	10-12'	19.95



## MACE® BRAND 10% PEPPER GEL

- "Gel Formula" shuts down attackers
- Super powerful 1.4% Capsaicinoids concentration
- Sticks like glue
- Non-toxic and Non-flammable
- Minimal cross-contamination

Order #	MFG. #	Size	Range	Sugg.Ret.
1604214	80269	45 gr	15'	\$19.95
1604215	80270	79 gr.	20'	29.95



## MACE® BRAND NIGHT DEFENDER™

- Pepper Gel unit w/bright LED light (33 lux @ 1m)
- Light activates when cap is lifted & aids aim in low light situations
- 1.4% Capsaicinoids concentration
- Sticks like glue on contact & is ideal for use indoors or windy conditions
- Unit contains 7 short bursts
- Batteries for LED are included

Order #	MFG. #	Size	Range	Sugg.Ret.
1605480	80352	45 gr.	8-12'	\$29.95



## MACE® BRAND PEPPER GUN

- Advanced delivery system utilizing Bag-In-A-Can technology
- Sprays up to 25'
- 360° spray radius, allows consistent spray stream from any angle
- Super strength pepper w/.74 Capsaicinoids
- 28 gram OC cartridge contains up to 7 blasts
- Trigger activated LED light
- Water test cartridge & batteries for LED light included

Order #	MFG. #	Color	Sugg.Ret.
1604802	80401	Blue/Black	\$74.95
1604803	80402	Sky Blue	74.95
1604804	80403	Silver	74.95
1604805	80404	Pink	74.95



## MACE® BRAND REFILL DUAL PACKS

- Replacement cartridges for the Pepper Gun

Order #	MFG. #	Pack	Sugg.Ret.
1604807	80421	2 OC Cartridges	\$21.95



### 10 % PEPPER FOAM

Revolutionary defense spray combines 10% pepper & foam to produce powerful defense during an attack. The thick foam covers assailant's face, making it difficult to see. When attacker attempts to wipe away the foam, the pepper is forced into the surface of the skin. Also includes UV dye.



### MACE® BRAND 10% PEPPERFOAM™

•Flip-top safety cap

**LARGE MODEL:** 67 gram unit, jet foam sprays 8-10 ft. Contains 5 one-second bursts

**MAGNUM MODEL:** 115 gram unit, jet foam sprays 8-10 ft. Contains 8 one-second bursts.

Order #	MFG. #	Size	Sugg.Ret.
1602969	80245	Large	\$19.95
1602970	80246	Magnum	22.95

### PEPPER MACE

Pepper Mace relies on a powerful pepper formula that, upon direct contact with an assailant's eyes, forces them to slam shut and causes an intense burning sensation.

**NEW**

### MACE® BRAND HOT PINK JOGGER

•Combines the best of two worlds, hottest formula & hottest color in a convenient, easy to carry Jogger model  
•18g unit utilizes the traditional flip-n-grip safety system, preventing accidental discharge while guaranteeing maximum performance during use  
•Newest hand strap allows quick, easy access to defend yourself in any crisis situation & the convenience of being washable to keep it looking good for years to come



Order #	MFG. #	Size	Sugg.Ret.
1606490	80328	18 grams	\$22.95

### MACE® BRAND JOGGER MODEL

•Great for runners & walkers •Wraparound Velcro®-like strap fits snugly around hand •Sprays 8-12 feet •18 gram unit fires 10 one-second bursts



Order #	MFG. #	Size	Sugg.Ret.
1603380	80329	18 grams	\$18.95

### TRIPLE ACTION™

Triple Action combines OC pepper with CN tear gas along with a UV marking dye. Blended sprays provide the combined benefits of individual sprays



### MACE® BRAND PERSONAL MODEL

•Ideal for outdoor activities including walking or running  
•Belt clip holds unit in place for quick access •Velcro®-like attachment included •Features flip-top safety cap, finger-grip dispenser & keychain •Sprays 8-12 feet •18 gram unit contains 10 one-second bursts

Order #	MFG. #	Pack	Sugg.Ret.
1604260	80136	Single Unit	\$17.95

### MACE® BRAND POCKET MODEL

•Easy aim finger-grip feature •Ideal for emergency use •Compact design fits comfortably in woman's hand  
•Features flip-top safety cap, finger-grip dispenser & keychain •Sprays 6-12 feet •11 gram unit contains 5 one-second bursts



Order #	MFG. #	Sugg.Ret.
1602869	80141	\$15.95

### MACE® BRAND POLICE MODEL

•Same model used by law enforcement personnel  
•Ideal for auto or home use •Velcro®-like attachment included •Features flip-top safety cap, finger-grip dispenser, belt clip & keychain •Sprays 8-12 feet •18 gram unit contains 10 one-second bursts



Order #	MFG. #	Pack	Sugg.Ret.
1604261	80112	Single Unit	\$19.95

### PEPPERGARD®

Oleoresin Capsicum or OC Pepper is a naturally occurring substance derived from cayenne peppers. OC Pepper is designed to cause an assailant's eyes to slam shut upon direct contact. Also causes an intense burning sensation to the skin, eyes & throat.

### MACE® BRAND PERSONAL MODEL

•Ideal for outdoor activities including walking or running  
•Belt clip holds unit in place for quick access •Velcro®-like attachment included •Features flip-top safety cap, finger-grip dispenser & keychain •Sprays 8-12 feet •18 gram unit contains 10 one-second bursts



Order #	MFG. #	Sugg.Ret.
1602870	80153	\$16.95

### MACE® BRAND POCKET MODEL

•10% •Ideal for emergency use •Compact design fits comfortably in a woman's hand •Features flip-top safety cap & keychain •Sprays 6-12 feet •11 gram unit contains 5 one-second bursts



Order #	MFG. #	Sugg.Ret.
1603202	80171	\$14.95

### MACE® BRAND KEYCASE W/UV DYE

•Hard key case model fits easily in pocket or purse  
•Features glow-in-dark locking safety cap & keyring  
•11 gram stream unit sprays up to 10 feet •Contains 5, one second bursts •Includes key ring



Order #	MFG. #	Color	Sugg.Ret.
1604341	80390	Red	\$14.95
1604342	80391	Black	14.95
1604343	80392	Blue	14.95
1604344	80393	Purple	14.95
<b>18 PIECE DISPLAY ASSORTED COLORS</b>			
1604345	80172	Assorted	199.99



## MACE® BRAND POLICE MODEL

•Same model used by law enforcement personnel •Ideal for auto or home use •Velcro®-like attachment included •Features flip-top safety cap, finger-grip dispenser, belt clip & keychain •Sprays 8-12 feet •18 gram unit contains 10 one-second bursts

Order #	MFG. #	Sugg.Ret.
1603019	80170	\$18.95



## MACE® BRAND LEATHER PLUS MODEL

•Attractive model fits easily in pocket or purse •Features glow-in-the-dark locking safety cap & keyring •Sprays up to 10 feet •Contains 5 one-second bursts

Order #	MFG. #	Style	Sugg.Ret.
1603262	80184	With UV Dye	\$12.95



## PHALANX DEFENSE SYSTEMS

**NEW**

### PHALANX DEFENSE SYSTEMS EMERGENCY BODY ARMOR

•Ambidextrous ballistic panel system has multiple configurations which allow it to be deployed using various methods •Unique, patent pending blend of ballistic materials that not only capture a projectile, but also disperses the energy of the projectile over the entire surface of the panel •Fits most adults & children •2 units can be fitted together to provide front & rear protection •Nylon lap-strap & clip •Carrier is made from high-performance, utility-grade linen fabric •Not intended for daily wear •Meets & exceeds NIJ threat level IIIA

Order #	MFG. #	Sugg.Ret.
1606598	EB50055	\$199.95



## PROMAG™ ARCHANGEL DEFENSE PEN - ALUMINUM

•Constructed of T6 aircraft grade aluminum for superior strength & impact resistance •Pen is black, type III hard anodized per mil-spec •Ergonomic design w/threaded cap •Features 1/16" stainless steel heat treated pocket clip •Pen has 1.0mm medium carbide ball point for writing use •Can be used as PDA stylus or as an effective self defense tool & control device

Order #	MFG. #	Sugg.Ret.
1605537	AAPEN01	\$34.17



## PROMAG™ ARCHANGEL DE- FENSE PEN - POLYMER

•Designed as a companion to police, military & executives •Classically styled writing instrument which is also an effective defense tool & control device •Precision molded high strength polymer •Ergonomic design features a threaded cap, heavy duty steel pocket clip & replaceable black pressurized ink cartridge

Order #	MFG. #	Sugg.Ret.
1605538	AAPEN02	\$22.95



**RUGER®**

## RUGER® KEY CHAIN PEPPER SPRAY

•Vinyl pouch & key ring allow you to attach the unit to your keys, bag or other for easy accessibility •Sprays up to 15' w/2 million Scoville heat units of law enforcement-strength stopping power •Net weight 0.388 oz. (11g) •POP Countertop Display w/Ruger® logo contains (6) pink & (6) black Key Chain pepper sprays •NOTE: May not be shipped to or purchased in AK, HI, MA & NY

Order #	MFG. #	Color	Sugg.Ret.
1606535	RKS091D	Desert Camo	\$10.49
1606338	RKS091 POP		119.88



## RUGER® ARMOR CASE PEPPER SPRAY

•Rugged plastic case w/key ring protects your pepper spray & allows you to attach it to your keys for easy accessibility •Sprays up to 15' w/2 million Scoville heat units of law enforcement-strength stopping power •Net weight 0.388 oz. (11g) •NOTE: POP Countertop Display w/Ruger® logo contains (6) pink & (6) black Armor Case pepper sprays •NOTE: May not be shipped to or purchased in AK, HI, MA & NY

Order #	MFG. #	Color	Sugg.Ret.
1606313	RPC093	Black	\$10.99
1606314	RPC093P	Pink	10.99
1606339	RPC093 POP		133.88



## RUGER® LIPSTICK PEPPER SPRAY

•Lipstick-like design allows you to store pepper spray in your purse, cosmetics bag or pocket, to help avoid detection by others •Sprays up to 15' w/2 million Scoville heat units of law enforcement-strength stopping power •Net weight 0.529 oz. (15g) •NOTE: POP Countertop Display w/Ruger® logo contains (12) assorted Lipstick pepper sprays •NOTE: May not be shipped to or purchased in AK, HI, MA & NY

Order #	MFG. #	Color	Sugg.Ret.
1606315	RLS092	Assorted	\$12.99
1606517	RLS092R	Red	12.99
1606518	RLS092P	Pink	12.99
1606519	RLS092B	Black	12.99
1606520	RLS092S	Silver	12.99
1606340	RLS092 POP		155.88



SAVES, LOCKS  
& PERSONAL  
PROTECTION





### RUGER® PRO EXTREME SPEED RELEASE PEPPER SPRAY

•Features same canister used by law enforcement •Displays the Ruger® logo •No lock - quickly releases by simply placing your thumb underneath the trigger & pressing down •Sprays up to 15' with 2 million Scoville heat units •Net weight 1.4 oz. (40g) •NOTE: May not be shipped to or purchased in AK, HI, MA & NY



Order #	MFG. #	Color	Sugg.Ret.
1606337	RX0094	Black	\$14.49

### RUGER® STEALTH PEPPER SPRAY SYSTEM

•Powerful - sprays up to 15' with 2 million Scoville heat units of law enforcement strength stopping power •Speed release allows activation in less than one second •Belt clip attaches the system to just about anything •Net weight 0.388 oz. (11g) •NOTE: May not be shipped to or purchased in AK, HI, MA & NY



Order #	MFG. #	Color	Sugg.Ret.
1606316	R3HB01	Black	\$15.99
1606317	R3HBP1	Pink	15.99

### RUGER® ULTRA PEPPER SPRAY SYSTEM

•Powerful - sprays up to 15' with 2 million Scoville heat units of law enforcement strength stopping power •Speed release allows activation in less than one second •125 decibel alarm screams for attention, even if you can't •Bright strobe light confuses attackers & gives you a chance to get away •Belt clip attaches the system to just about anything •Net weight 0.388 oz. (11g) •POP Countertop Display w/Ruger® logo contains (8) black Ultra Pepper Spray Systems •NOTE: May not be shipped to or purchased in AK, HI, MA & NY



Order #	MFG. #	Color	Sugg.Ret.
1606319	RHBP01	Pink	\$29.99
1606330	RRH005		19.99
1606341	RHB001 POP		239.92

### RUGER® BEAR REPELLENT

•Formulated to penetrate wet fur •Shotgun-cloud pattern sprays up to 9.2 seconds •Net wt.: 9 oz. (255g) •NOTE: May not be shipped to or purchased in WI



Order #	MFG. #	Sugg.Ret.
1606320	RB0100	\$44.99

### RUGER® RESTRAINT

•Stream pattern pepper spray •Sprays up to 15 feet w/2 million Scoville heat units of law enforcement strength stopping power •Speed Release releases pepper spray w/quick flip of the trigger guard •Black color •NOTE: May not be shipped to or purchased in AK, HI, MA & NY



Order #	MFG. #	Size	Sugg.Ret.
1606321	RFTS40	1.4 oz.	\$14.99
1606323	RFTS80	2.8 oz.	16.99

### RUGER® LOCKDOWN

•Fog pattern pepper spray •Sprays up to 12 feet w/2 million Scoville heat units of law enforcement strength stopping power •Speed Release releases pepper spray w/quick flip of the trigger guard •Black color •NOTE: May not be shipped to or purchased in AK, HI, MA & NY



Order #	MFG. #	Size	Sugg.Ret.
1606322	RFTF40	1.4 oz.	\$15.49

### RUGER® LOCKDOWN PISTOL GRIP SPRAY

•Pistol grip pepper spray creates cone-shaped fog pattern used for crowd control •Sprays up to 20 feet w/2 million Scoville heat units of law enforcement strength stopping power •Black color •NOTE: May not be shipped to or purchased in AK, HI, MA & NY



Order #	MFG. #	Size	Sugg.Ret.
1606325	RPGF84	16 oz.	\$48.99

### RUGER® LOCKDOWN FIREMASTER SPRAY

•Sprays cone-shaped fog pattern •Compact spray nozzle minimizes required storage space •Sprays up to 20 feet w/2 million Scoville heat units of law enforcement strength stopping power •Black color •NOTE: May not be shipped to or purchased in AK, HI, MA & NY



Order #	MFG. #	Size	Sugg.Ret.
1606326	RFMF85	16 oz.	\$48.49

### NEW RUGER® MEGA PEPPER SPRAY HOLSTER

•Dual nylon-elastic material allows the Mega Pepper Spray Holster to fit Bear Repellent & Law Enforcement size canisters from 8 oz. to 1 lb. •Easy access Velcro® flap & elastic side panels securely hold canister in place •Black



Order #	MFG. #	Sugg.Ret.
0636119	RMH072	\$19.95





## STATE FORMULATIONS

SABRE® formulated to specific regulations of a particular state. Stun guns are illegal in the following states: Hawaii, Michigan, New Jersey, Massachusetts, New York, Rhode Island, Washington D.C. & Wisconsin. Michigan requires conceal carry license to purchase. There may be other states & cities w/restrictions so check local laws to determine the legality of carrying a SABRE® stun gun in your area.

**NEW**

## SABRE® PERSONAL ALARM

•Remove alarm from keychain to activate 110 dB siren •Audible up to 300' (100 m.) •Dual siren design •Attaches to bag, backpack, keychain, or purse, for easy access •Security Equipment Corp. will make a donation to the Rape, Abuse, & Incest National Network for every PA-RAINN-01 sold



Order #	MFG. #	Color	Sugg.Ret.
1606539	PA-RAINN-01	Red	\$9.99
1606540	PA-01	Black	9.99



## SABRE® STUN PEN

•Safety switch to prevent accidental discharge •Built-in LED flashlight & pocket clip •Red LED light alerts you when Stun Pen is armed •Holster included •Uses (2) CD123A Lithium Ion batteries •Black •600,000 volts of stopping power

Order #	MFG. #	Sugg.Ret.
1606169	S-1001	\$39.99

## SABRE® STUN GUNS

•Designed for civilian personal protection •Intimidating & psychological deterrent •Deployed, loud electrical current jumps from probe to probe & can be visualized & heard from distance •Requires direct contact with attacker's torso •On-Off safety switch & separate activation trigger •Serial number & 2 year warranty date on inside battery cover •Test fired before leaving factory •NOTE: Not designed to be deployed continuously without contacting torso. Do not activate in this manner for more than a few seconds as it will result in irreparable damage



Order #	MFG. #	Volts	Battery	Ht.	Sugg.Ret.
<b>w/WRIST STRAP &amp; BELT CLIP</b>					
1604395	S-120S	120,000	1 9V	4-3/4"	\$29.99
1604429	S-300S	300,000	2-9V	5-7/8"	54.99
1604393	S-500S	500,000	2 9V	6"	64.99
<b>w/WRIST STRAP</b>					
1604394	S-200S	200,000	2 9V	6"	44.99

## SABRE® ELECTRICAL DEFENSE STUN GUNS

•22% Smaller than traditional stun guns •Equipped with an On-Off safety switch & separate activation trigger •Includes LED light & holster •NOTE: Serial number & 2-Year Warranty date can be found inside the battery cover



Order #	MFG. #	Color	Volts	Sugg.Ret.
1606170	S-1002-PK	Pink	800K	\$49.99
1606171	S-1002-BK	Black	800K	49.99
1606256	S-1002-PR	Purple	800K	49.99

## SABRE® ELECTRICAL DEFENSE RECHARGEABLE MINI STUN GUNS

•45% Smaller than traditional stun guns •Rechargeable •Equipped with an On-Off safety switch & separate activation trigger •Includes LED light & holster •NOTE: Serial number & 2-Year Warranty date can be found inside the battery cover



Order #	MFG. #	Color	Volts	Sugg.Ret.
1606173	S-1005-PR	Purple	600K	\$59.99
1606172	S-1005-PK	Pink	600K	59.99
1606258	S-1005-BK	Black	600K	59.99

**NEW**

## SABRE RED USA® PRACTICE SPRAY

•Boost confidence, improve accuracy •Inert spray for practice only •Does NOT contain the pepper irritant & cannot be used for self defense •Includes directions for free access to a practice video, safety tips video & a target •Complete w/practice instructions •Reinforced safety prevents accidental discharge •These models cannot be shipped to AK or HI •**HC Keychain & Canister:** Contains approx. 25 bursts for a distance of 10' •**Spitfire Refill:** Contains approx. 8 bursts for a distance of 6' to 8'



Order #	MFG. #	Model	Size	Sugg.Ret.
1606503	STU-HC-00	HC Keychain	.54 oz.	\$6.49
1606505	STU-R-00	Canister	.54 oz.	4.99
<b>PRACTICE REFILL</b>				
1606504	STU-SFR-00	Spitfire	.16 oz.	4.99

**NEW**

## SABRE RED USA® CAMPUS SAFETY PEPPER GEL

•SABRE RED's Pepper Gel is extremely practical providing protection at a safe distance •Free key ring included, so Campus Safety Pepper Gel is easily accessible •Durable, plastic hard case with integrated safety lock •For SABRE Red, the same brand trusted and used by the NYPD & law enforcement worldwide



Order #	MFG. #	Size	Color	Sugg.Ret.
1606501	HC-14-CPG-PK-US	.54 oz.	Pink	\$11.99
1606502	HC-14-CPG-BK-US	.54 oz.	Black	11.99

## SABRE RED USA® NBCF PINK QUICK RELEASE PEPPER SPRAY KEY RING

•Sabre® will make a donation to the NBCF (National Breast Cancer Foundation) for every unit sold\* •Quick release w/detachable key chain allows immediate access to defense spray when unlocking a door or driving a car •Most popular Sabre® style is a powerful 0.54 oz. container delivering a ballistic stream which reduces wind blow-back •Projects 8 to 10 feet •Contains approximately 25 shots



Order #	MFG. #	Size	Color	Sugg.Ret.
1604801	HC-NBCF-01	.54 oz.	Pink	\$11.99

SAFES, LOCKS  
& PERSONAL  
PROTECTION



### FRONTIERSMAN® BEAR ATTACK DETERRENT

•Contains maximum strength allowed by EPA •35' firing range •Dual propellant system •Velocity & stopping power •Each 1 second blast provides ample amount of spray to put large barrier between user & charging bear •Unique holster design allows immediate access, increased safety •Glow-in-the-dark safety wedge prevents accidental discharge •Safety tie attachment eliminates misplacement •Field tested & repeatedly proven effective by Elmendorf Air Force Base in Elmendorf, Alaska & Brown Bear Resources in Missoula, Montana •Not legal for sale in Wisconsin



Order #	MFG. #	Size	Sugg.Ret.
1604378	FBAD-03	7.9 oz.	\$45.99
1604380	FBAD-06	9.2 oz.	49.99
<b>W/BELT HOLSTER</b>			
1604379	FBAD-04	7.9 oz.	53.99
1604381	FBAD-07	9.2 oz.	55.99

### SABRE RED USA® RED PEPPER GEL TACTICAL UNIT

•Increases safety with the 18' range •Less affected by weather conditions, the velocity & consistency covers your threat and reduces cross contamination •Same size canister used by professionals such as the NYPD & LA County Sheriff's •Protect yourself and your family at a safe distance •Holster included



Order #	MFG. #	Size	Sugg.Ret.
1606167	MK-3-GEL-H-US	1.8 oz.	\$14.99

### SABRE RED USA® BLUE FACE PEPPER SPRAY KEYCHAIN

•Blue Marking Dye adds another powerful ingredient to keep you safe •Couple the intense burning of the eyes, coughing, sneezing & runny nose with a thick blue marking dye •Turns criminals into Smurfs •Dye lasts 24 hours & provides immediate evidence allowing law enforcement to facilitate an arrest •Hard case •Attachment clip •Quick release key ring attachment •Not legal for sale in Wisconsin



Order #	MFG. #	Size	Sugg.Ret.
1605382	HC-22-TC-USBD	.75 oz.	\$13.99

### SABRE RED® HOME DEFENSE PEPPER SPRAY FOGGER

•Contains 10% oleoresin capsiem measuring 0.67% major capsaicinoids •8% to 86% hotter than any other civilian red pepper spray •Powerful fog delivery with a range up to 25' which will cover an entire doorway •Wall mount bracket included •Not legal for sale in AR, CA, FL, HI, NJ, NY, NC, SC & WI



Order #	MFG. #	Size	Sugg.Ret.
1604767	FHP-01	13 oz.	\$49.99

### SABRE RED® DEFENSE SPRAYS

•10% Oleoresin Capsium (OC) measuring 1.33% Major Capsaicinoids •UV dye aids in suspect identification •Not legal for sale in NY & WI



Order #	MFG. #	Size	Color	Sugg.Ret.
<b>HARD CASE w/QUICK RELEASE KEY RING &amp; BELT CLIP</b>				
1604669	HC-14-OC-AC	.54 oz	Assorted	\$11.99

### SABRE RED USA® USA FORMULATED DEFENSE SPRAYS

•Special USA formula features 10% Oleoresin Capsium (OC) measuring 0.67% Major Capsaicinoids •Formulation measures over 4X stronger than OC used by many LE agencies •4-year expiration date



Order #	MFG. #	Size	Color	Sugg.Ret.
<b>CONCEALABLE LIPSTICK UNIT (NOT LEGAL IN WI)</b>				
1606165	LS-22-US	.75 oz.	Pink	\$8.99
<b>HARD CASE w/QUICK RELEASE KEY RING &amp; BELT CLIP</b>				
1604670	HC14-BK-US	.54 oz.	Black	11.99
1604764	HC-14-PK-US	.54 oz.	Pink	11.99
<b>JOGGER MODEL w/HAND STRAP</b>				
1604678	P-22J-OC-US	.75 oz.		12.99
1606166	P-22J-PK-US	.75 oz.	Pink	12.99
<b>KEY RING UNIT</b>				
1604673	KR-14-US	.54 oz		7.99
<b>POCKET UNIT W/CLIP</b>				
1604676	P-22-OC-US	.75 oz		7.99
<b>NOT FOR SALE IN HI, NY &amp; NJ</b>				
<b>DUATHLETE - ADJUSTABLE ARMBAND INCLUDED</b>				
1606168	MK-3-AM-US	1.8 oz.	Black/Reflective	16.99

### SABRE RED® FLOOR DISPLAY

•Features 12 each of 4 popular models



MFG. #	DESCRIPTION
P-22J-OC	Jogger Unit
HC-14-PK-OC	Hard Case w/Key Ring - Pink
HC-14-BK-OC	Hard Case w/Key Ring - Black
HC-14-AC-OC	Hard Case w/Key Ring - Assorted Colors

**DROP SHIP** **DROP SHIPPED**

Order #	MFG. #	Sugg.Ret.
1604775	SRFD-01	\$575.47

### SABRE RED USA® COUNTER BOX DISPLAY

•Contains 12 units •Hard case w/quick release key ring & belt clip



Order #	MFG. #	Size	Color	Sugg.Ret.
1604772	P-BX-HC-14-PK-US	.54 oz.	Pink	\$143.88
1604773	P-BX-HC-14-AC-OC	.54 oz.	Assorted	143.88
1606508	BX-HC-14-BK-US	.54 oz.	Black	143.88

### SABRE® ADVANCED 3-IN-1 FORMULATION

•Contains: red pepper, CS Military Tear gas & UV marking dye •Provides maximum stopping power •Approximately 25 shots per canister •8-10' spray range •Ballistic stream spray pattern decreases wind blow-back •4-year expiration date •Assorted colors •Not legal for sale in HI, MI, NY, & WI



Order #	MFG. #	Size	Case	Sugg.Ret.
<b>KEY RING</b>				
1604672	KR-14	.50 oz.		\$8.99
<b>POCKET KEY CARRY CASE</b>				
1604762	SPKC-14-PC	.54 oz.	Pink Camo	11.99

continued next page

## SABRE®

continued from previous page

### ADVANCED 3-IN-1 FORMULATION

Order #	MFG. #	Size	Case	Sugg.Ret.
<b>HARD CASE w/QUICK RELEASE KEY RING &amp; BELT CLIP</b>				
1604434	HC-14-AC	.54 oz.	Assorted	11.99
1604760	HC-14-BL	.54 oz.	Blue	11.99
1604761	HC-14-PK	.54 oz.	Pink	11.99
<b>POCKET UNIT W/CLIP</b>				
1604675	P-22	.75 oz.		8.99
<b>ATHLETIC MODEL JOGGER UNIT w/HANDSTRAP</b>				
1604677	P-22J	.75 oz.		12.99
<b>NOT FOR SALE IN HI, MI, NJ, NY &amp; WI</b>				
<b>HOME UNIT</b>				
1604671	HM-80	2.5 oz.		14.99
<b>POLICE MAGNUM</b>				
1604674	M-120L	4.0 oz.		16.99

## SABRE®

### ADVANCED 3-IN-1 FORMULATION FLOOR DISPLAY

•Features 12 each of 4 popular models

MFG. #	DESCRIPTION
P-22J	Jogger Unit
HC-14-PK	Hard Case w/Key Ring - Pink
HC-14-BK	Hard Case w/Key Ring - Black
HC-14-AC	Hard Case w/Key Ring - Assorted Colors

**DROP SHIP**

**DROP SHIPPED**

Order #	MFG. #	Sugg.Ret.
1604774	SFD-01	\$587.42

## SABRE®

### ADVANCED 3-IN-1 FORMULATION COUNTER BOX DISPLAY

•Contains 12 units •Hard case w/quick release key ring & belt clip

Order #	MFG. #	Size	Color	Sugg.Ret.
1604768	T-BX-HC-14-BK	.54 oz.	Black	\$143.86
1604769	T-BX-HC-14-PK	.54 oz.	Pink	143.86
1604770	T-BX-HC-14-AC	.54 oz.	Assorted	143.86

## SABRE®

### ADVANCED 3-IN-1 FORMULATION HOME & AWAY PROTECTION KIT

•Contains 2 self-defense sprays, a home unit & key chain case •Home Unit features: glow-in-the-dark safety & wall mount clip •Away Unit features: black key case, quick release key ring, & clip attachment for immediate accessibility •Sprays 8-10 ft. •Sizes in kit: 2.5 oz (1) ea. & .54 oz (1) ea.

Order #	MFG. #	Sugg.Ret.
1604881	S-HAPK	\$22.99

### SABRE RED USA® NBCF PINK KEY RING MAXIMUM STRENGTH PEPPER SPRAY COUNTER BOX DISPLAY

•Sabre® will make a donation to the NBCF (National Breast Cancer Foundation) for every unit sold •Features Sabre Red USA Formula & UV dye •Quick release w/detachable key chain •Projects 8 to 10 feet •Legal for sale in all 50 states

Order #	MFG. #	Size	Qty.	Sugg.Ret.
1604882	P-BX-HC-NBCF-01	.54 oz.	12 units	\$143.88

## SABRE RED USA®

### STOP STRAP PEPPER SPRAY

•Uses Stop Strap Technology from SABRE® Red •For increased safety, the pepper spray will not spray if separated from the Stop Strap •Ideal for those reluctant to use pepper spray

Order #	MFG. #	Color	Sugg.Ret.
1606362	SST-01-BK-US	Black	\$21.50
1606363	SST-01-PK-US	Pink	21.50

## SABRE RED USA®

### SPITFIRE® PEPPER SPRAY

•Compact & fast-deploying •Features SABRE® Red pepper spray •Designed to fire w/less effort & aim w/greater accuracy from the hip or over the shoulder •Contains 0.54 fl. oz. •Includes quick release key ring •Legal everywhere EXCEPT Wisconsin •NOTE: Sabre Red donates a portion of the proceeds from the National Breast Cancer Foundation model to support the fight against breast cancer

Order #	MFG. #	Color	Sugg.Ret.
1606364	SF-01-BK-US	Black	\$14.99
1606365	SF-01-RD-US	Red	14.99
1606366	SF-01-PR-US	Purple	14.99
<b>NATIONAL BREAST CANCER FOUNDATION MODEL</b>			
1606476	SF-NBCF-01	Pink	16.99
<b>CANISTER REFILL</b>			
1606367	SF-R-01		9.99

**NEW**

## SABRE RED USA®

### SPITFIRE® ZOMBIE PEPPER SPRAY

•Compact & fast-deploying •Features SABRE® Red pepper spray •Designed to fire w/less effort & aim w/greater accuracy from the hip or over the shoulder •Includes quick release key ring •Legal everywhere EXCEPT Wisconsin

Order #	MFG. #	Color	Sugg.Ret.
1606461	SFZ-01-US	Bright Green	\$16.99

**NEW**

### PROTECTOR DOG ATTACK DETERRENT w/KEY RING ATTACHMENT by SABRE RED®

•Humanely deters dogs of all sizes from attacking humans without causing long-lasting injury or pain to the attacking dog •Integrated safety lock •Easy to use •All-natural •Contains 0.75 fl. oz. •Spray Range: Up to 12ft. •Includes key ring attachment •NOTE: Sabre Red donates a portion of the proceeds from the National Breast Cancer Foundation model to support the fight against breast cancer

Order #	MFG. #	Color	Sugg.Ret.
1606478	SRP-KR-02	Black	\$8.99
<b>NATIONAL BREAST CANCER FOUNDATION MODEL</b>			
1606477	SRP-NBCFR-KR-02	Pink	8.99

**NEW**

### PROTECTOR DOG ATTACK DETERRENT w/BELT CLIP ATTACHMENT by SABRE RED®

•Humanely deters dogs of all sizes from attacking humans without causing long-lasting injury or pain to the attacking dog •Flip top safety mechanism •Easy to use •All-natural •Contains 1.8 fl. oz. •Spray Range: Up to 15ft. •Includes belt clip attachment

Order #	MFG. #	Color	Sugg.Ret.
1606479	SRP-MK3	Black	\$14.99







### SABRE® GATEKEEPER DOOR ALARM

•Small, practical & easy to use •Piercing 120 decibel siren will likely startle & deter any intruder, while waking you •Door wedge design blocks inward opening doors giving you time to reach for your SABRE pepper spray •Non-skid bottom



Order #	MFG. #	Sugg.Ret.
1605383	GK-01	\$14.99



**NEW**

### TASER INTERNATIONAL TASER C2™ BASIC KIT

•Entry level kit •Includes: Taser® C2™ ECD w/ integrated laser sight, lithium power magazine battery, (1) 15' live cartridge, manual & training disc •NOTE: Activation/Registration required for unit to operate •Age & background checked at activation •Restricted from citizen use in MA, RI, NY, NJ, MI, HI, District of Columbia & certain cities & counties •Certain restrictions may apply - check local laws



Order #	MFG. #	Color	Sugg.Ret.
1606597	39056	Black	\$299.99

### TASER INTERNATIONAL TASER C2™ GOLD PACKAGE

•Includes Taser® C2™ w/laser, lithium power magazine, (2) 15' live cartridges, (1) practice cartridge, durable/lightweight holster, practice target, & training manual •NOTE: Restricted from citizen use in MA, RI, NY, NJ, HI, District of Columbia & certain cities & counties •Certain restrictions may apply - check local laws



Order #	MFG. #	Color	Sugg.Ret.
1606175	39030	Red Hot Red	\$399.99
1606176	39031	Electric Blue	399.99
1606177	39032	Titanium	399.99
1606178	39034	Fashion Pink	399.99
1606305	39035	Yellow	399.99
1606179	39036	Black	399.99

### TASER INTERNATIONAL TASER C2™ REPLACEMENT PARTS

Order #	MFG. #	Sugg.Ret.
<b>LITHIUM POWER MAGAZINE - REPLACEMENT BATTERY</b>		
1604603	39011	\$39.99
<b>2-PACK REPLACEMENT CARTRIDGE</b>		
1604604	37215	69.99

### TASER INTERNATIONAL TASER M26C™ PACKAGE

•Uses propelled wires to deliver an incapacitating pulse that overrides sensory & motor functions of nervous system •Uses Neuro Muscular Incapacitation (NMI) technology to stop aggressive individuals, including those under the influence of drugs or alcohol •Uses replaceable cartridges containing inert, compressed nitrogen to fire two small probes attached to 15' (4.5 meter) insulated conductive wires •Energy current penetrates up to two cumulative inches of clothing to jam sensory & motor functions & inhibiting muscular control •The NMI effect continues in 5-10 second cycles each time you press the trigger •Can be used in direct contact stun mode •Anti-Felon Identification to deter misuse •Package includes: Taser; (4) cartridges; manual & training materials



Order #	MFG. #	Color	Sugg.Ret.
1605379	44009	Black w/Yellow	\$499.99

**NEW**

### TASER INTERNATIONAL TASER X3 "THE HOME DEFENDER"

•Perfect to protect yourself and your family, under any circumstances •Will not create lasting harm to your attacker •Easy to use •Designed for law enforcement •Can incapacitate three people before reloading •Allows you to engage multiple targets •Displays warning arc while loaded •Ergonomic grip •Environmentally Hardened system survives sea spray, rain, dust, electrostatic discharge and even short-term water submersion •High capacity battery •Semi-automatic mode allows you to shoot 3 cartridges •2 back up shots •Dual LASER System •Kit Includes: Taser® X3 "The Home Defender", six Taser® smart 25 ft. cartridges, Taser® X3 Home Defender right side holster and Taser® target



Order #	MFG. #	Color	Sugg.Ret.
1606484	33230	Black	\$1,099.99

### TASER INTERNATIONAL TASER X26C™ ECD (ELECTRONIC CONTROL DEVICE)

•Equipped w/field-tested Taser® technology •Delivers an incapacitating pulse that overrides the sensory & motor functions of the nervous system •Uses Neuro Muscular Incapacitation (NMI) technology which is capable of stopping the most aggressive individuals, including those under the influence of drugs &/or alcohol •Two small energized probes penetrate up to two cumulative inches of clothing using Shaped Pulse™ technology & the NMI effect continues in 5-10 second cycles each time trigger is pressed •Features Central Information digital display (CID) that shows battery percentage, duration remaining during pulse discharge, time, date, & warranty status •NOTE: Can be used in direct contact stun mode; This model is software upgradeable via its integrated Digital Power Magazine (DPM) battery •Kits includes: Taser® X26C™; Laser sight w/integrated LED; DPM battery; (6)-15 foot cartridges w/practice target; Training DVD/Manual; Training certificate (Offers 1-hour of training w/certified officer); Soft holster



Order #	MFG. #	Color	Sugg.Ret.
1605547	26009	Black	\$949.99

### AIR TASER™ C2 HARD CASE HOLSTER

Leather holster with a 360° belt clip. Leather completely encases the C2.



Order #	MFG. #	Color	Sugg.Ret.
0631782	39027	Black	\$29.99