

# MICROWAVE OVEN OPERATION

## How a Microwave Operates

The microwave oven produces R F energy in the form of Radio Waves that cycle 2450 million cycles per second. These MICRO-WAVES have 3 main characteristics. They can penetrate certain materials as if it wasn't even there, materials like glass, mica, paper and some plastics. Secondly, there are materials like metal that the microwaves cannot penetrate and basically just bounce off of. And thirdly, there are materials like FOOD that micro-waves do penetrate and basically are absorbed in the material.

The food absorbs the microwaves and the microwaves cause the molecules in the food to move rapidly creating friction between them which creates the heat that cooks the food. The microwaves only penetrate the outer portion of the food but the heat is conducted inwards to cook the food completely.

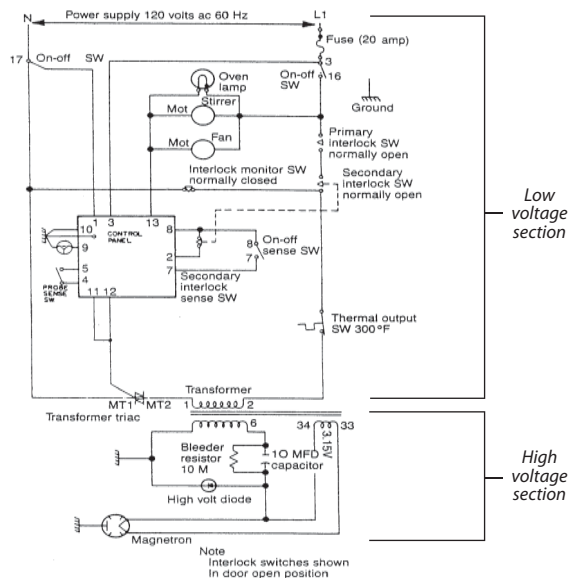
It is the MAGNETRON in the microwave oven that produces the microwaves. The magnetron needs approx. 4000 Volts to go into oscillation to generate the microwaves. The microwave oven has basically 2 sections, the low voltage section which actually controls the unit and the high voltage section whose components include the magnetron and the components that power up the magnetron. The high voltage transformer or the new style inverter is the component that separates the 2 sides.

The low voltage (control section) takes the 120 volts, passes it through all the safety devices like the interlock switches, thermal fuses and powers up the control device. On the older models the control device was the timer which told the triac to close and send power to the high voltage transformer; on the new units it is the PCB control board that performs that function. The fans, turntable motors and lights are also powered from the low voltage section.

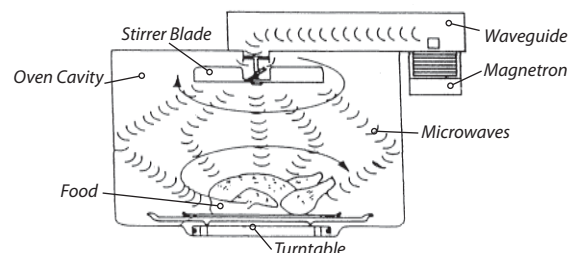
The high voltage section consists of the high voltage transformer, the doubling circuit and the magnetron. The transformer takes the 120 volts from the low voltage section and increases it to approx. 2000 volts and feeds it to the doubling circuit. The doubling circuit consists of the H V Capacitor and the H V diode. The H V diode converts the voltage to DC and the capacitor discharges the 2000 volts and sends it to the magnetron. This adds to the 2000 volts that comes direct from the H V transformer and gives the magnetron the 4000 Volts needed to go into oscillation. On some of the new models this is all done by the inverter board.

The microwaves leave the magnetron through its antenna and goes into the waveguide where they bounce around the metal waveguide and into the oven cavity until they are absorbed by the food. Some models have stirrer blades to direct the microwaves randomly in the cavity to reduce uneven heating. Some models use a rotating tray to reduce uneven heating. The glass tray is used so microwaves can enter the bottom of the food for complete penetration.

Typical Microwave Oven Schematic



Microwave Cooking



1. Microwaves produced by magnetron enters the metal waveguide.
2. Microwaves travel down the waveguide and are stirred up by the stirrer blade as they enter the oven cavity.
3. As they enter the metal oven cavity they bounce around until they are absorbed into food.
4. Microwaves absorbed in food set the molecules in such a frenzied motion that they heat through friction.

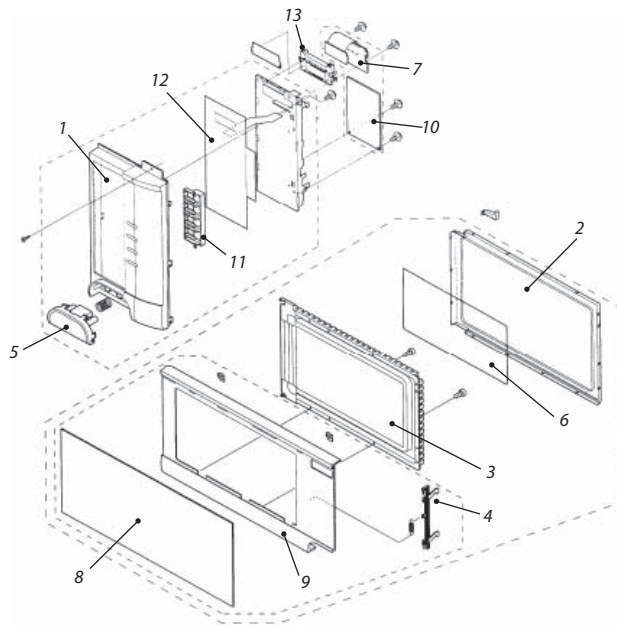
Does the food in a microwave oven cook from the inside out?

Contrary to popular belief, microwaved food does not cook from the inside out. Instead, the microwaves penetrate the first 1" to 1-1/2" of the food, and heat is then drawn to the center by conduction. The theory of food cooking from the inside out comes from the fact that because the air in the microwave is cool, heat dissipates off the surface of the food quickly.

# MICROWAVE OVEN OPERATION

## Microwave Control Panel Parts

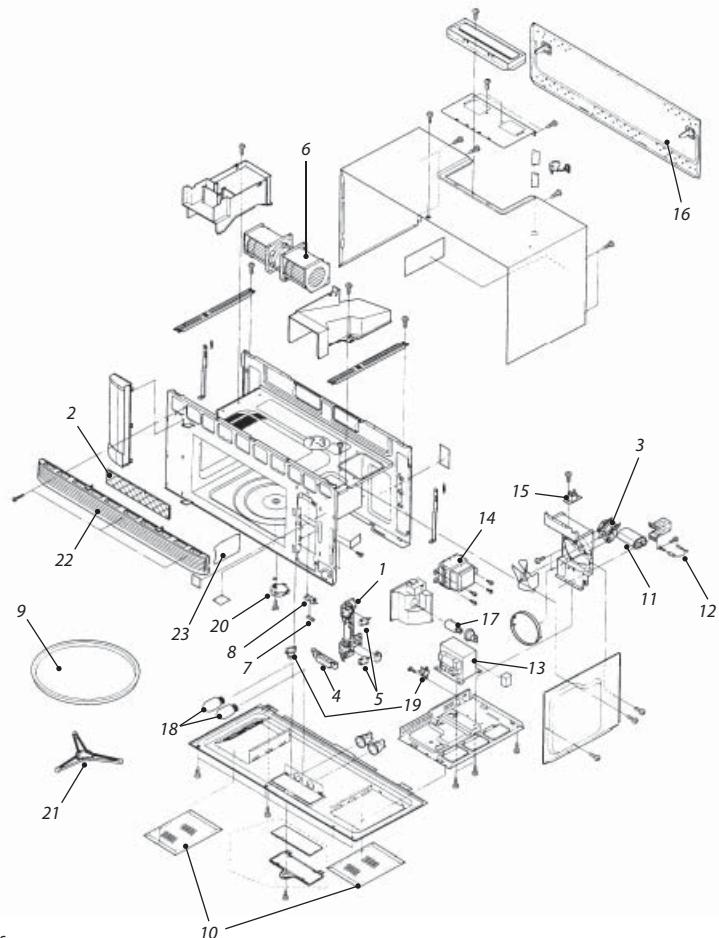
1. Control Panel
2. Door Choke
3. Door Frame
4. Door Latch Key
5. Door Open Button
6. Door Open Button
7. LCD Display & PCB Control Board
8. Outer Door Glass
9. Outer Door Panel
10. PCB, Power Supply
11. Select Button
12. Touch Pad
13. LCD Holder



Please note that not all parts shown are used in all models of microwaves.

## Microwave Oven & Cabinet Parts

1. Body Latch Board
2. Charcoal Filter
3. Cooling Fan Motor
4. Door Open Lever
5. Door Switches
6. Exhaust Blower Motor Assembly
7. Fuse
8. Fuse Holder
9. Glass Tray
10. Grease Filters
11. High Voltage Capacitor
12. High Voltage Diode/Rectifier
13. High Voltage Transformer
14. Magnetron
15. Magnetron High Limit Thermostat
16. Mounting Plate
17. Oven Lamp
18. Rangehood Lamp
19. Thermostats
20. Turntable Motor
21. Turntable Support
22. Vent Louver
23. Waveguide Cover



Please note that not all parts shown are used in all models of microwaves.

# MICROWAVE HIGH VOLTAGE CAPACITORS

All ERP capacitors are built with an internal bleeder resistor and will replace non-bleeder types. The bleeder resistor is a safety device built into the capacitor to discharge the capacitor when the unit is turned off. Capacitors rated at 2100V will replace capacitors rated up to 2500V when used in any home microwave (non-commercial) rated at 1,000 watts or less.



Available with  
1/4" or 3/16"  
male terminals

## UNIVERSAL 2100V FOR DOMESTIC APPLICATIONS

**Universal High Voltage Capacitors with 1/4" male terminals** Each capacitor is equipped with four 1/4" male quick disconnect terminals. Case temperature rating 70°C. Rated at 2100V.

**Popular Direct Replacement High Voltage Capacitors with 3/16" male terminals** (depicted with a -1) Rated @2100V with 3/16" male quick disconnect terminals. Commonly used in Panasonic and Quasar microwaves. For values not shown, use our 1/4" terminal capacitors and our 13QBPADAPTR Adapter Kit.

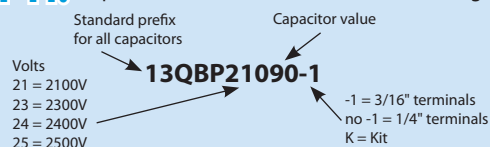
**High Voltage Capacitor Kits** (depicted with a K at the end of the part #) Replacement for Sanyo HV capacitors with internal diode (or without internal diode) and special mounting brackets. One kit replaces both base and side mount brackets. Reduces inventory. Available in four most common values.

## 2500V FOR COMMERCIAL APPLICATIONS

For commercial applications using 2500V capacitors.

Choose your capacitor nearest to your original value. Standard Mfg. tolerance is 6% ±3% (i.e. If you have .88 MFD capacitor use 13QBP21090 – .90MFD)

## FYI: Capacitors' nomenclature for ease of ordering



Capacitor Kit

Kit replaces both  
types shown below:



Side Mount Base Mount



## Terminal Reducer Adapter Kit

Reduces 1/4" terminals to 3/16".

Allows you to substitute universal 1/4" HV capacitors in Panasonic & other applications using 3/16" terminals.

Eliminates the need to convert wire terminals.

**ERP #13QBPADAPT**  
(Kit of 2 adapters)

ERP #	Volt	Value	Height	Width	Depth	Terminal	Kit #
<b>Domestic</b>							
13QBP20075	2000	.75	2.50"	2.00"	1.25"	1/4" male	
13QBP21055	2100	.55	2.50"	2.00"	1.25"	1/4" male	
13QBP21065	2100	.65	2.50"	2.00"	1.25"	1/4" male	13QBP21065K
13QBP21080	2100	.80	2.50"	2.00"	1.25"	1/4" male	
13QBP21085	2100	.85	3.00"	2.00"	1.25"	1/4" male	13QBP21085K
13QBP21090	2100	.90	3.00"	2.00"	1.25"	1/4" male	
13QBP21090-1	2100	.90	3.00"	2.00"	1.25"	3/16" male	
13QBP21095	2100	.95	3.00"	2.00"	1.25"	1/4" male	
13QBP21095-1	2100	.95	3.50"	2.00"	1.25"	3/16" male	
13QBP21097	2100	.97	3.00"	2.00"	1.25"	1/4" male	13QBP21097K
13QBP21100	2100	1.00	3.00"	2.00"	1.25"	1/4" male	13QBP21100K
13QBP21105	2100	1.05	3.00"	2.00"	1.25"	1/4" male	
13QBP21110	2100	1.10	3.00"	2.00"	1.25"	1/4" male	
<b>Commercial</b>							
13QBP25075	2500	.75	3.75"	2.00"	1.25"	1/4" male	
13QBP25085	2500	.85	4.00"	2.00"	1.25"	1/4" male	
13QBP25090	2500	.90	4.75"	2.00"	1.25"	1/4" male	
13QBP25097	2500	.97	4.75"	2.00"	1.25"	1/4" male	
<b>Popular Exact Replacements</b>							
13QBP23100	2300	1.00	4.12"	2.00"	1.25"	1/4" male	
13QBP24094	2400	.94	1.50"	2.00"	1.25"	1/4" male	

# MICROWAVE DIODES

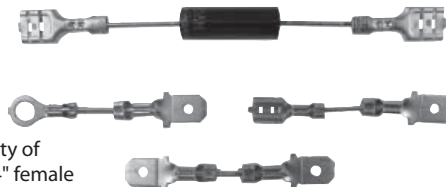
## Order No. 11QBUNIV

### Universal Diode Kit

Length: 3-5/8"

kV: 12 mA: 350

Stock this one diode and replace the majority of diodes commonly used. Diode uses two 1/4" female quick disconnect terminals. Just select correct terminal adapter and attach to correct side of diode.



**NOTE:** Due to the high resistance of a HV diode, it cannot be tested with just any V.O.M. The V.O.M. must be set on the highest resistance setting, and the V.O.M. must be an analog meter using a 9V battery or have an R x 10m scale. Digital meters reduce the 9V to operate the meter and cannot be used.

## Order No. 11QB0234

Length: 3-3/8" kV: 12 mA: 350

Terminals:

Banded side= #8 ring

Non-banded= 3/16" female quick disconnect



Fits: GE, Panasonic, Quasar & many other brands

## Order No. 11QB0235

Length: 3-1/2" kV: 12 mA: 350

Terminals:

Banded side= #8 ring

Non-banded= 1/4" male quick disconnect



Fits: Amana, Whirlpool & many other brands

Banded side Non-banded side



The silver band indicates the direction of current flow. Current flows from the non-banded side to the banded side.

## Order No. 11QB0236

Length: 3-1/2" kV: 12 mA: 350

Terminals:

Banded side= #8 ring

Non-banded= 1/4" female quick disconnect



Fits: GE, Electrolux, Emerson & many other brands

## Order No. 11QB0237

Length: 3-5/16" kV: 12 mA: 350

Terminals:

Banded side= #8 ring

Non-banded= 1/4" female quick disconnect wrapped in heat shrink tubing



Fits: GE, Goldstar, Maytag & many other brands

## Order No. 11QB0526

Length: 10-5/8" kV: 12 mA: 350

Terminals:

Banded side= #8 ring

Non-banded= 2-1/4" female quick disconnect



Fits: Kenmore, Sanyo & many other brands

## Order No. 11QB0527

Length: 3-5/16" kV: 12 mA: 350

Terminals:

Banded side= 1/4" female quick disconnect

Non-banded= 1/4" female flag quick disconnect



Fits: Whirlpool & many other brands

## Order No. 11QB0528

Length: 3-5/8" kV: 12 mA: 350

Terminals:

Banded side= 3/16" female quick disconnect

Non-banded= 1/4" female quick disconnect



Fits: Electrolux, Whirlpool & many other brands

## Order No. 11QB0529

Length: 6" kV: 12 mA: 350

Terminals:

Banded side= #8 ring

Non-banded= 3/4" female quick disconnect



Fits: Jenn-Air, Maytag & many other brands

## Order No. 11QB0530

Length: 12" kV: 12 mA: 350

Terminals:

Banded side = #8 ring

Non-banded = 2-1/4" female quick disconnect on "Y" lead



Fits: GE, Goldstar, Electrolux, Kenmore, Sharp & many other brands

## Order No. 11QB0531

Length: 3" kV: 15 mA: 750

Terminals:

Banded side =

1/4" male quick disconnect

Non-banded =

1/4" male quick disconnect



Fits: GE & many other brands

# MICROWAVE DOOR HANDLES

Order No. 25QBP3777

**G.E.**

Black  
11-3/4" L x 1" W  
10-15/16" on center holes  
Replaces GE #WB15X337



Order No. 25QBP3778

**G.E.**

White  
11-3/4" L x 1" W  
10-15/16" on center holes  
Replaces GE #WB15X338



Order No. 25QBP3779

**G.E.**

Black  
11-5/8" L x 1-1/8" W  
10-9/32" on center holes  
Replaces GE #WB15X10020



Order No. 25QBP3780

**G.E.**

White  
11-5/8" L x 1-1/8" W  
10-9/32" on center holes  
Replaces GE #WB15X335



Order No. 25QBP3784

**G.E.**

Black  
11-3/16" L x 1-1/8" W  
8-3/4" & 9-7/8" on center holes  
Replaces GE #WB15X10022



Order No. 25QBP3785

**G.E.**

White  
11-3/16" L x 1-1/8" W  
8-3/4" & 9-7/8" on center holes  
Replaces GE #WB15X10023



Order No. 25QBP8703

**Daewoo**

White  
10-1/2" L x 1-3/16" W  
9-19/32" on center holes



Order No. 25QBP0513

**Goldstar  
LG, Kenmore**

Almond  
10-1/8" L x 1-1/4" W  
8-1/2" on center holes



Order No. 25QBP0514

**Goldstar  
LG, Kenmore**

Black  
9-7/8" L x 1-1/8" W  
8-1/2" on center holes



Order No. 25QBP0521

**Goldstar  
LG, Kenmore**

Pewter  
9-7/8" L x 1-1/8" W  
9" on center holes



Order No. 25QBP3770

**Goldstar  
LG, Kenmore**

White  
10-1/8" L x 1-1/8" W  
8-1/2" on center holes



Order No. 25QBP1550

**Sanyo**

Black  
8-1/8" L x 1" W  
6-1/2" on center holes





# MICROWAVE DOOR HANDLES

Order No. 25QBP1001

**Sharp**

Almond  
10-5/8" L x 1" W  
10" on center holes



Order No. 25QBP3744

**Sharp**

White  
10-5/8" L x 1" W  
10" on center holes



Order No. 25QBP3752

**Sharp**

Black  
10-5/8" L x 1" W  
10" on center holes



Order No. 25QBP3755

**Sharp**

Black/Chrome  
11-3/16" L x 7/8" W  
10-3/32" on center holes



Order No. 25QBP3764

**Sharp**

White/Clear  
11" L x 7/8" W  
9-31/32" on center holes



Order No. 25QBP3765

**Sharp**

White  
9-7/8" L x 1-1/8" W  
8-3/32" & 8-15/16" on center holes



Order No. 25QBP3772

**Sharp**

White  
0" L x 0" W  
0" on center holes



Order No. 25QBP3790

**Sharp**

Black  
10-1/8" L x 1-1/8" W  
8-1/2" on center holes



Order No. 25QBP3804

**Sharp**

Pewter  
9-1/8" L x 1-1/8" W  
7-3/8" on center holes



ERP Distributors:  
Your competitors already knew about ERP's  
new products months before you did.  
Sign up now for the Inbox Insider and  
receive e-mail flyers to even the playing field.

Ask your sales representative or call ERP to  
have a signup sheet sent to you.  
800.377.1355

MICROWAVE

# MICROWAVE DOOR LATCHKEYS

**Order No. 80QBP7500**

**Daewoo**

Plastic - double key  
4-3/4" L x 1-9/16" W  
Thickness: 3/8"



**Order No. 80QBP7512**

**Goldstar**

Plastic - double key  
7" L x 1-7/8" W  
Thickness: 3/16"



**Order No. 80QBP7536**

**Goldstar**

Plastic - single key  
2" L x 7/8" W  
Thickness: 5/16"



**Order No. 80QBP8588**

**Goldstar**

Plastic - double key  
6-3/8" L x 2" W  
Thickness: 3/8"



**Order No. 80QBP8491**

**Panasonic**

Plastic - double key  
5-3/16" L x 2" W  
Thickness: 3/16"



**Order No. 80QBP8680**

**Panasonic**

Plastic - double key  
4-7/8" L x 2" W  
Thickness: 1/8"



**Order No. 80QBP8834**

**Panasonic**

Plastic - double key  
5-1/8" L x 1-3/4" W  
Thickness: 3/16"



**Order No. 80QBP0787**

**Sharp**

Plastic - double key  
7-15/16" L x 2-3/16" W  
Thickness: 5/16"



**Order No. 80QBP2524**

**Sharp**

Plastic - double key  
7-5/8" L x 2" W  
Thickness: 1/4"



**Order No. 80QBP2621**

**Sharp**

Plastic - double key  
6-3/4" L x 2-1/16" W  
Thickness: 5/8"



**Order No. 80QBP2671**

**Sharp**

Plastic - double key  
8-7/8" L x 1-7/8" W  
Thickness: 9/16"



**Order No. 80QBP7638**

**Sharp**

Plastic - double key  
7-5/8" L x 2" W  
Thickness: 3/16"



**Order No. 80QBP2699**

**Sharp**

Plastic - single key (Left)  
1-1/16" L x 2-1/8" W  
Thickness: 5/8"



**Order No. 80QBP2804**

**Sharp**

Plastic - single key (Right)  
1-1/16" L x 2-1/8" W  
Thickness: 5/8"



# MICROWAVE DOOR OPEN BUTTONS

**Order No. 80QBP0827**

**Panasonic**

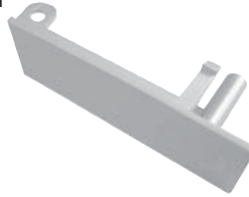
Black  
3-1/4" length  
1-5/8" width  
1" depth



**Order No. 80QBP3303**

**Panasonic**

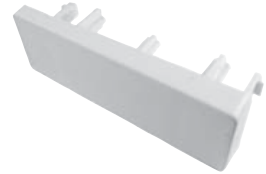
White  
3-5/8" length  
1-1/4" width  
1-5/16" depth



**Order No. 80QBP5796**

**Panasonic**

White  
3-1/8" length  
1" width  
1-1/4" depth



**Order No. 80QBP0705**

**Sharp**

Black  
2-1/8" length  
1" width  
2-3/4" depth



**NEW!**

**Order No. 80QBP1175**

**Sharp**

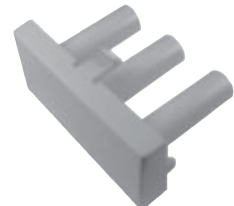
Black  
2-7/8" length  
15/16" width  
1-1/2" depth



**Order No. 80QBP1727**

**Sharp**

Almond  
2-3/8" length  
1-1/8" width  
1-9/16" depth



**Order No. 80QBP3088**

**Sharp**

Black  
2-3/8" length  
1-1/8" width  
1-5/8" depth



**Order No. 80QBP3747**

**Sharp**

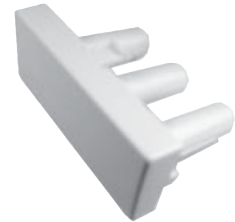
Black  
2-3/8" length  
1-1/8" width  
1-9/16" depth



**Order No. 80QBP3751**

**Sharp**

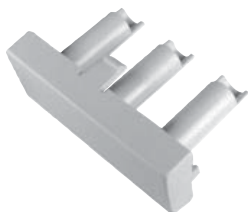
White  
2-3/8" length  
1-1/8" width  
5/8" depth



**Order No. 80QBP4019**

**Sharp**

Almond  
2-3/8" length  
1" width  
1-5/8" depth



**Order No. 80QBP7370**

**Sharp**

Black  
3-1/8" length  
1-3/8" width  
1-5/8" depth



**Order No. 80QBP7371**

**Sharp**

White  
4-1/8" length  
1-3/8" width  
1-5/8" depth



MICROWAVE



# MICROWAVE DOOR OPEN BUTTONS

Order No. 80QBP7373

**Sharp**

Black  
3-7/16" length  
2" width  
1-5/8" depth



Order No. 80QBP8658

**Sharp**

Black  
1-11/16" length  
1-5/8" width  
1-5/8" depth



Order No. 80QBP8668

**Sharp**

White  
3-7/8" length  
1-7/8" width  
1-3/4" depth



Order No. 80QBP8677

**Sharp**

Black  
4" length  
1-5/8" width  
1-3/4" depth



Order No. 80QBP8715

**Sharp**

Stainless Steel  
4-3/16" length  
1-11/16" width  
1-11/16" depth

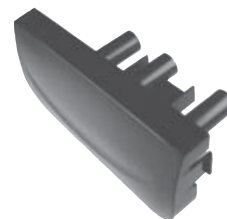


**NEW!**

Order No. 80QBP8746

**Sharp**

Black  
3-7/8" length  
1-7/8" width  
1-3/4" depth

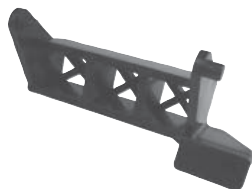


# MICROWAVE DOOR OPEN LEVERS

Order No. 80QBP1881

**Panasonic**

3-1/2" L  
1-7/16" W  
1-9/16" D



Order No. 80QBP3483

**Panasonic**

3-1/4" L  
1-1/2" W  
1-3/4" D



Order No. 80QBP8817

**Panasonic**

3-3/8" L  
2-1/8" W  
1-1/2" D



Order No. 80QBP1432

**Sharp**

4-3/8" L  
1-1/8" W  
1-3/16" D



Order No. 80QBP3117

**Sharp**

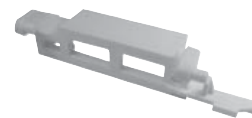
4-1/2" L  
1-1/2" W  
1-9/16" D



Order No. 80QBP7677

**Sharp**

4-1/2" L  
1-3/8" W  
1" D



# MICROWAVE RACK SUPPORTS

Order No. 80QBP3119

Plastic  
13/16" L x 1/2" W x 1" D



**NEW!**

**Goldstar**

Order No. 82QBP0102

Plastic  
3/4" L x 9/16" W x 15/16" D



**Goldstar**

Order No. 82QBP0117

Plastic  
25/32" L x 15/32" W x 23/32" D



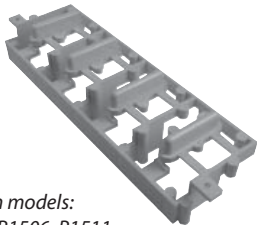
**Samsung**

# MICROWAVE SELECT BUTTONS

Order No. 80QBP1468

**Sharp**

White  
5" L x 1-7/16" W x 3/4" D

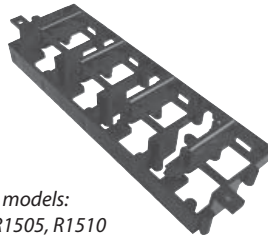


Used on models:  
R1501, R1506, R1511

Order No. 80QBP8675

**Sharp**

Black  
5" L x 1-7/16" W x 3/4" D

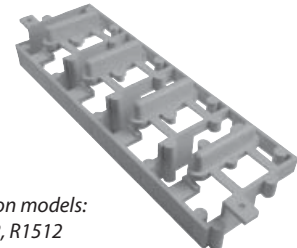


Used on models:  
R1500, R1505, R1510

Order No. 80QBP8712

**Sharp**

Almond  
5" L x 1-7/16" W x 3/4" D



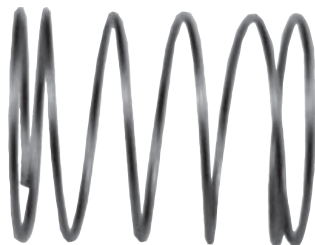
Used on models:  
R1502, R1512

# MICROWAVE SPRINGS

Order No. 80QBP1421

**Sharp**

Spring  
7/8" length  
5/8" diameter



Order No. 80QBP1496

**Sharp**

Latch Spring  
1-1/4" length  
1/4" diameter



MICROWAVE

# MICROWAVE FUSES

**Fast Blow** fuses are quick acting protectors for use in general circuit applications where high surges or transients are not anticipated.

**Slow Blow** fuses are generally used in circuits subject to high inrush currents or other transient surges. Microwave ovens fall in this category, although some manufacturers equip their units with fast blow fuses. As microwave ovens age, some degradation of components occur increasing current requirements. When older units, originally equipped with fast blow fuses experience nuisance interruptions, it is acceptable to replace with a slow blow fuse of the same amp rating.

**CFB:** ceramic fast blow  
**CSB:** ceramic slow blow

**BAF, BAN, FLM, NLM, SC:** midget fuse type

## FUSESTATS

1" diameter thread

ERP #	Amp	Volt	Type
14QBP0247	15	125	Slow blow
14QBP0248	20	125	Slow blow
14QBP0251	30	125	Slow blow



## FUSETRONS

3/4" diameter thread

ERP #	Amp	Volt	Type
14QBP0249	15	125	Slow blow
14QBP0250	20	125	Slow blow
14QBP0252	30	125	Slow blow



## Order No. 14QBP.25GSB20MM

Replaces Whirlpool W10111684

Glass Fuse

.25 amp 250V slow blow  
5 MM dia. x 20 MM long



**NEW style short fuse!**

## Order No. 14QBP04CSB20MM

Replaces Whirlpool W10121103

4 amp ceramic slow blow  
5 MM dia. x 20 MM long



**NEW style short fuse!**

Used on Emerson

## Order No. RF-3AMPFB 3 amp Order No. RF-5AMPFB 5 amp

250 V glass fast blow  
5 MM dia. x 32 MM long



**NEW!**

## CERAMIC FUSES

1-1/4" L x 1/4" diameter

Fast blow replaces:

6AB, SP, RAB, 3AB, 314, ABC, CES-2, CES-4

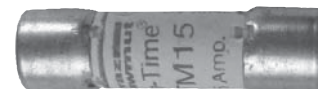
Slow blow replaces:

3ABSB, 326, CES-6, MDA, MWO, 373, 3WO



ERP #	Amp	Volt	Type
14QBP10CFB	10	250	Fast blow
14QBP12CFB	12	250	Fast blow
14QBP15CFB	15	250	Fast blow
14QBP20CFB	20	250	Fast blow
14QBP25CFB	25	125	Fast blow
14QBP30CFB	30	125	Fast blow
14QBP08CSB	8	250	Slow blow
14QBP10CSB	10	250	Slow blow
14QBP12CSB	12	250	Slow blow
14QBP15CSB	15	250	Slow blow
14QBP18CSB	18	250	Slow blow
14QBP20CSB	20	250	Slow blow
14QBP25CSB	25	125	Slow blow
14QBP30CSB	30	125	Slow blow

## MIDGET FUSES



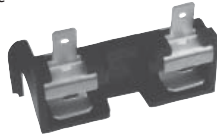
ERP #	Amp	Volt	Length	Dia.	Type
14QBP15BAF	15	250	1-1/2"	13/32"	BAF/BLF
14QBP20BAF	20	250	1-1/2"	13/32"	BAF/BLF
14QBP30BAF	30	250	1-1/2"	13/32"	BAF/BLF
14QBP15BAN	15	250	1-1/2"	13/32"	BAN/BLN
14QBP20BAN	20	250	1-1/2"	13/32"	BAN/BLN
14QBP25BAN	25	250	1-1/2"	13/32"	BAN/BLN
14QBP30BAN	30	250	1-1/2"	13/32"	BAN/BLN
14QBP20FLM	20	250	1-1/2"	13/32"	FLM/FNM
14QBP30FLM	30	250	1-1/2"	13/32"	FLM/FNM
14QBP20NLM	20	250	2"	9/16"	NLM/NON
14QBP25NLM	25	250	2"	9/16"	NLM/NON
14QBP30NLM	30	250	2"	9/16"	NLM/NON
14QBP10SC	10	250	1-5/16"	13/32"	SC/SLC
14QBP15SC	15	250	1-5/16"	13/32"	SC/SLC
14QBP20SC	20	250	1-5/16"	13/32"	SC/SLC

# MIRCOWAVE FUSE HOLDERS

## Order No. 14QBP0100

20 amp • 250 volt  
3/16" male terminals  
Holds:  
1-1/4" L x 1/4" dia. ceraminc/glass fuse

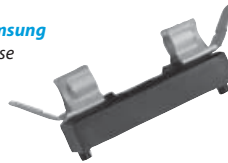
Used on **Panasonic, Quasar**  
Has black molded base



## Order No. 14QBP0101

30 amp • 300 volt  
1/4" male terminals  
Holds:  
1-1/4" L x 1/4" dia. ceraminc/glass fuse

Used on **Sanyo, Samsung**  
Has gray molded base



## Order No. 14QBP0105

20 amp • 300 volt  
3/16" male terminals  
Holds:  
1-1/4" L x 1/4" dia. ceraminc/glass fuse

Used on **Goldstar**  
Has locator pin

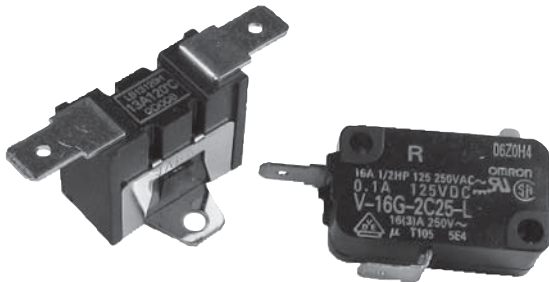


## FUSE/SWITCH KITS

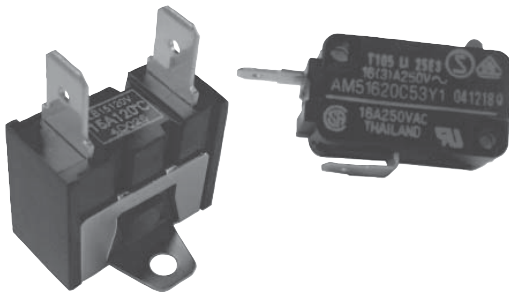
Sharp recommends that the monitor switch and CT fuse be replaced together. The following chart shows the complete kit order number as well as the order numbers for the individual components of the kit.



ERP Kit #	Fuse #	Switch #
FSWK007	14QBP20CFB	28QBP0499
FSWK010	14QBP15CSB	28QBP0499
FSWK012	14QBP20CSB	28QBP0499
FSWK015	14QBP15CFB	28QBP0499
FSWK016	14QBP20CFB	28QBP0499
FSWK021	14QBP20CSB	28QBP0499



ERP Kit #	Fuse #	Switch #
FSWK020	24QBP13A120H	28QBP0499
FSWK025	24QBP15A120H	28QBP0499
FSWK029	24QBP13A120H	28QBP0499



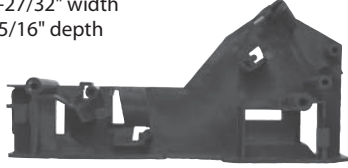
ERP Kit #	Fuse #	Switch #
FSWK017	24QBP15A120V	28QBP0499
FSWK018	24QBP15A150V	28QBP0499
FSWK027	24QBP13A120V	28QBP0499

# MICROWAVE BODY LATCHBOARDS

Order No. 80QBP1220

**Panasonic**

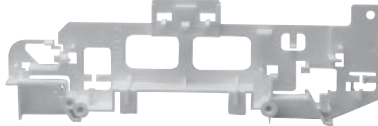
6-9/32" length  
2-27/32" width  
15/16" depth



Order No. 80QBP3931

**Sharp**

8-11/32" length  
2-11/16" width  
1-3/8" depth



Order No. 80QBP8240

**Sharp**

9-5/8" length  
2-3/8" width  
1-5/16" depth



Order No. 80QBP8337

**Sharp**

8-5/8" length  
3-1/4" width  
1-1/4" depth



Order No. 80QBP8750

**Sharp**

10-7/8" length  
2-7/16" width  
1-5/8" depth

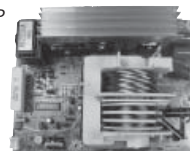


## MICROWAVE INVERTERS

**WARNING:** The inverter board looks like a regular printed circuit board, but is actually a high voltage/high current device. This PCB replaces the high voltage transformer, high voltage capacitor and high voltage diode used in ordinary microwaves. It supplies the approximate 4000V DC needed to put the magnetron into oscillation. As with all microwave parts, repairs should only be done by qualified technicians. Do not touch circuit even when off, high voltage current may remain in the circuit. Do not touch aluminum heat sink, it becomes extremely hot. Do not attempt to adjust or repair the inverter board. Only replace it by following the manufacturer's recommended instructions.

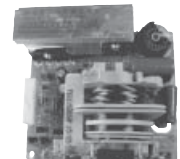
Order No. 20QBP0100

Replaces:  
Panasonic  
A606Y4A00AP



Order No. 20QBP0106

Replaces: Panasonic  
A606Y6G00AP  
F606Y6F00AP



## MICROWAVE INNER DOOR SHEET

Order No. 83QBP1516

**Universal Door Sheets**  
Cut-to-fit clear plastic sheets  
with adhesive on one side.  
16"L x 15"W



## MICROWAVE CORD

Order No. 19QBP0145

**Universal**

90° plug, round cord  
60" overall length  
Black, 16AWG, 3 wire



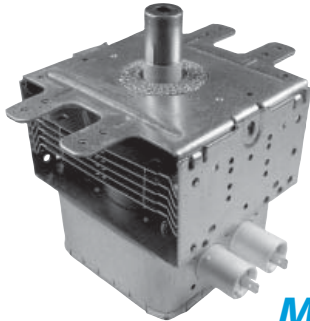
# MICROWAVE MAGNETRONS



## WARNING! Electrical Shock Hazard

Even partial disassembly of a microwave oven can expose a dangerous electric shock and radiation hazard. Service of microwave ovens should be performed only by qualified service personnel.

**CAUTION:** While ERP components are engineered for a broad range of applications, it is the responsibility of the service technician to determine the suitability of a particular application by observing proper electrical and mechanical constraints. ERP shall not be held liable for any injury or damage arising from the misuse or misapplication of its products.



There are approximately five manufacturers of microwave oven magnetrons in the world, and most of these manufacturers are located in the Far East. Anyone manufacturing a microwave oven must purchase the magnetron from one of these manufacturers.

What this means is that many microwave manufacturers use the same or similar magnetrons and that many are interchangeable.

***Magnetron Identification is as easy as 1 - 2 - 3!***

## 1) ELECTRICAL CHARACTERISTICS Match up kV Rating

The electrical characteristics of a magnetron cannot be determined without elaborate testing equipment or the manufacturer's spec sheets. Therefore, you must rely on the research done by us. Look for your industry # below to obtain your kV rating.

Industry #	kV	Industry #	kV	Industry #	kV	Industry #	kV	Industry #	kV	Industry #	kV
0M52	4.1	2M130	UC*	2M163	4.1	2M209	3.8	2M229	4.1	2M258	4.1
0M55	4.1	2M131	UC*	2M164	UC*	2M210	4.1	2M230	3.8	2M259	UC*
0M72	4.1	2M137	UC*	2M167	4.1	2M211	3.8	2M231	3.8	2M261	4.35
0M75	4.1	2M140	4.1	2M170	4.1	2M213	3.8	2M233	4.1	2M262	UC*
2M101	4.1	2M141	UC*	2M172	4.1	2M214	4.1	2M234	3.8	2M266	UC*
2M103	4.1	2M142	UC*	2M181	UC*	2M216	3.8	2M236	4.1	2M268	4.35
2M105	4.1	2M150	UC*	2M186	UC*	2M217	4.1	2M238	4.1	2M269	4.35
2M106	4.1	2M151	UC*	2M188	4.1	2M218	4.1	2M240	4.1	2M282	4.35
2M107	4.1	2M152	4.1	2M189	4.1	2M219	4.1	2M244	4.35	2M45	UC*
2M108	4.1	2M153	UC*	2M189	3.8	2M220	3.8	2M245	4.1	2M500	4.1
2M115	UC*	2M156	UC*	2M200	4.1	2M221	3.8	2M246	4.35	2M53	4.1
2M115	UC*	2M157	4.1	2M203	UC*	2M222	4.1	2M247	4.35	2M53*	UC*
2M120	UC*	2M158	4.1	2M204	4.1	2M223	3.8	2M248	4.35	2M53A*	UC*
2M121	UC*	2M160	4.1	2M205	UC*	2M224	4.1	2M250	UC*	2M57	4.1
2M125	UC*	2M161	4.1	2M207	3.8	2M226	4.1	2M253	4.1	2M700	4.1
2M128	4.1	2M162	UC*	2M208	4.1	2M228	4.1	2M254	4.1	2M71	4.1

\*UC signifies an uncommon kV rating. Magnetrons with uncommon kV ratings cannot be replaced with standard magnetrons. See our model cross reference (on the website) for exact replacement magnetrons.

**PLEASE NOTE:** Use of the wrong kV rated magnetron will result in one or more of the following:

- 1) Magnetron will not go into oscillation,
- 2) Magnetron will not function properly or will overheat
- 3) Magnetron's life will be reduced substantially.

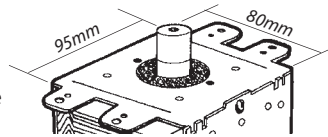


# MICROWAVE MAGNETRONS

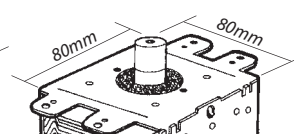
## 2) PHYSICAL CHARACTERISTICS Match up size, configuration, antenna height & bracket

### SIZE

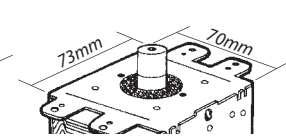
Present-day magnetrons come in three different sizes. In most cases, you cannot replace a smaller one with a larger one due to allotted space.



**STANDARD**



**COMPACT**



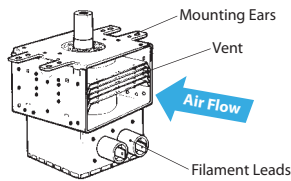
**SUBCOMPACT**

### CONFIGURATION

Configuration is the relationship between the mounting ears, the vents (airflow) and the filament leads. Manufacturers have designated letter codes for various configurations. The following are the four most popular configurations:

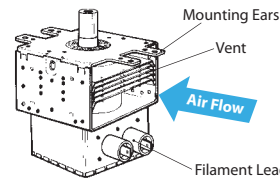
#### E CONFIGURATION

Mounting ears opposite vents and filament leads



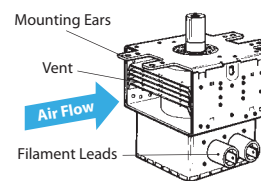
#### H CONFIGURATION

Vents and mounting ears in line with filament leads



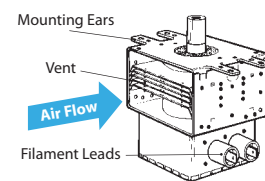
#### J CONFIGURATION

Vent and mounting ears opposite filament leads



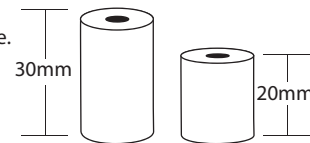
#### K CONFIGURATION

Mounting ears and filament leads opposite vents



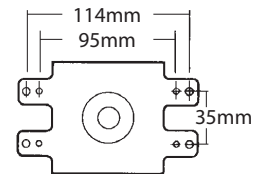
### ANTENNA HEIGHT

Many manufacturers are enlarging the cavity size without increasing the overall size of the microwave. They do this by reducing the size of the waveguide and shortening the antenna height.



### BRACKET

The most popular bracket is what we refer to as the standard bracket. It has two sets of mounting ears coming off of the opposite sides of the top plate of the magnetron with mounting holes spacing as shown. Some manufacturers are using other style mounting brackets which cannot be replaced with our universal type brackets. See pages 24 through 30 for correct replacement.



## 3) IDENTIFY PART NUMBER

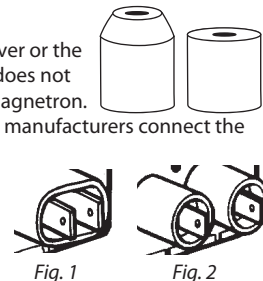
Match the correct magnetron using the chart below of the most popular magnetrons with standard bracket.

kV	Watts	Size	Config.	Antenna	Part No.	Page
4.35	900-1000	Standard	E	30mm	10QBP1007	117
4.35	900-1000	Standard	H	30mm	10QBP1003	117
4.35	900-1000	Standard	J	30mm	10QBP1005	117
4.35	900-1000	Standard	K	30mm	10QBP1004	118
4.1	700-850	Standard	E	30mm	10QBP0235	118
4.1	700-850	Standard	H	30mm	10QBP0231	118
4.1	700-850	Standard	J	30mm	10QBP0230	118
4.1	700-850	Standard	K	30mm	10QBP0232	119
4.1	700-850	Compact	E	30mm	10QBP0239	119
4.1	700-850	Compact	H	30mm	10QBP0226	119
4.1	700-850	Compact	J	30mm	10QBP0234	119
4.1	700-850	Compact	K	30mm	10QBP0228	120
3.8	500-650	Subcompact	H	30mm	10QBP0311	120
3.8	500-650	Subcompact	J	30mm	10QBP0315	120

For magnetrons with special brackets and 20 mm antennas, see magnetron section on pages 24 - 30.

### IMPORTANT NOTES

1. The shape of the antenna cover or the size of the hole in the cover does not affect the operation of the magnetron.
2. There are two standard ways manufacturers connect the filament leads.
  - Fig. 1 Both leads housed in one insulating block
  - Fig. 2 Each lead housed in its own insulating block



In 99% of the applications, the filament leads consist of single wires with a 1/4" quick disconnect female terminal. Therefore, both styles are interchangeable. One percent of the time a plastic block is used, which houses both individual wires. If your replacement magnetron doesn't accept this block, remove the block and connect individual wires to the proper terminal, making certain terminals do not arc against the cabinet cover.

### CAUTION

When reinstalling a removed magnetron, for whatever reason, make certain woven metal RF gasket is properly seated at base of antenna.

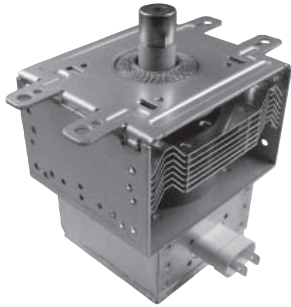


# MICROWAVE MAGNETRONS

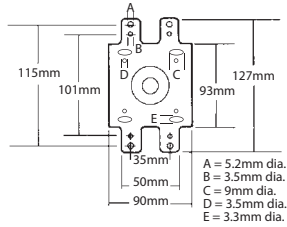
**FINDING YOUR MAGNETRON** All magnetrons are sorted in the following order for ease of locating:

- 1) kV rating: 4.35, 4.1, 3.8
- 2) Size: Standard, Compact, Subcompact
- 3) Configuration: E, GA, G, H, J, K
- 4) Antenna: 30, 20

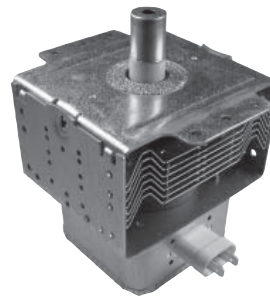
## Order No. 10QBP1008



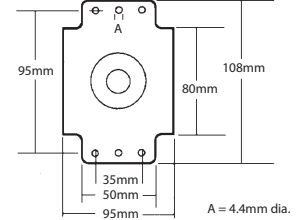
Peak Anode Voltage: 4.35 kV  
Type: Standard  
Configuration: E  
Antenna: 30mm  
Power Rating: 900-1000 watts



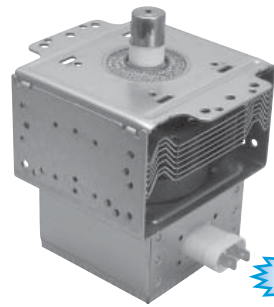
## Order No. 10QBP1001



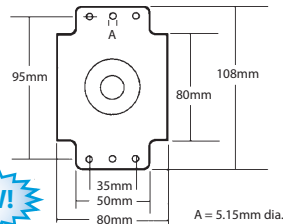
Peak Anode Voltage: 4.35 kV  
Type: Standard  
Configuration: H  
Antenna: 30mm  
Power Rating: 900-1000 watts



## Order No. 10QBP1012

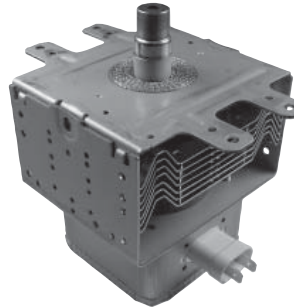


Peak Anode Voltage: 4.35 kV  
Type: Standard  
Configuration: H  
Antenna: 30mm  
Power Rating: 900-1000 watts

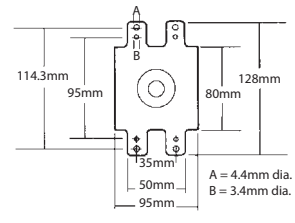


**NEW!**

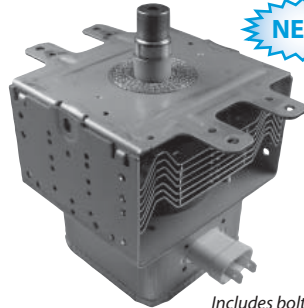
## Order No. 10QBP1003



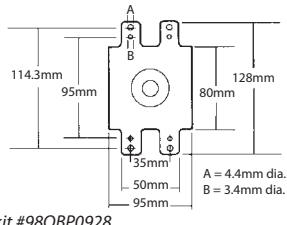
Peak Anode Voltage: 4.35 kV  
Type: Standard  
Configuration: H  
Antenna: 30mm  
Power Rating: 900-1000 watts



## Order No. 10QBP1003K



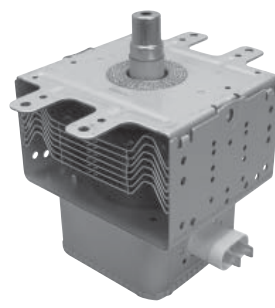
Peak Anode Voltage: 4.35 kV  
Type: Standard  
Configuration: H  
Antenna: 30mm  
Power Rating: 900-1000 watts



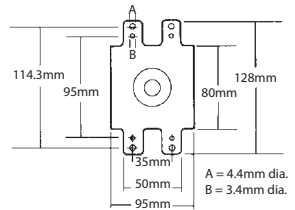
Includes bolt kit #98QBP0928

**NEW!**

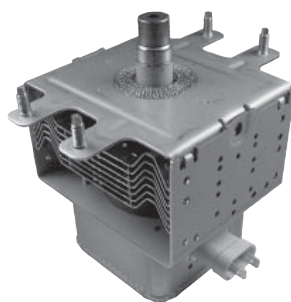
## Order No. 10QBP1005



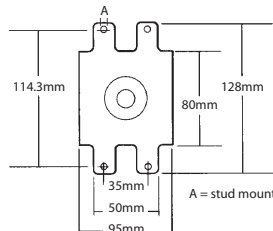
Peak Anode Voltage: 4.35 kV  
Type: Standard  
Configuration: J  
Antenna: 30mm  
Power Rating: 900-1000 watts



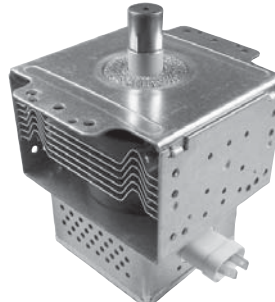
## Order No. 10QBP1000



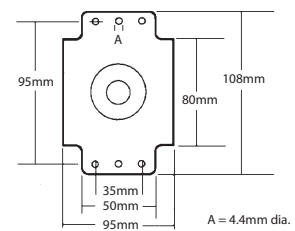
Peak Anode Voltage: 4.35 kV  
Type: Standard  
Configuration: J  
Antenna: 30mm  
Power Rating: 900-1000 watts



## Order No. 10QBP1009



Peak Anode Voltage: 4.35 kV  
Type: Standard  
Configuration: J  
Antenna: 30mm  
Power Rating: 1000 watts

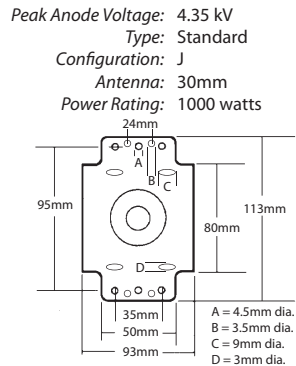
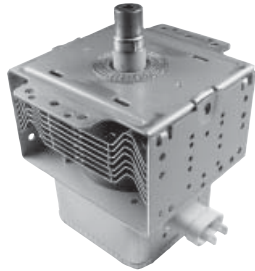


# MICROWAVE MAGNETRONS

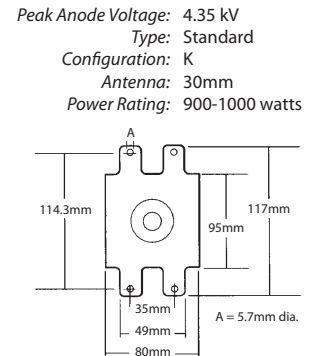
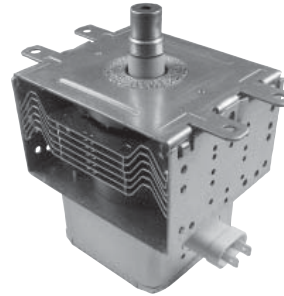
**FINDING YOUR MAGNETRON** All magnetrons are sorted in the following order for ease of locating:

- 1) kV rating: 4.35, 4.1, 3.8
- 2) Size: Standard, Compact, Subcompact
- 3) Configuration: E, GA, G, H, J, K
- 4) Antenna: 30, 20

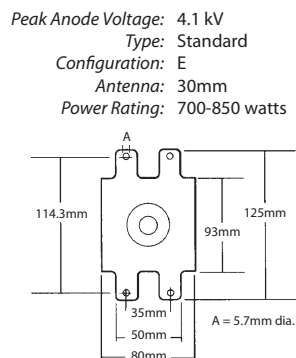
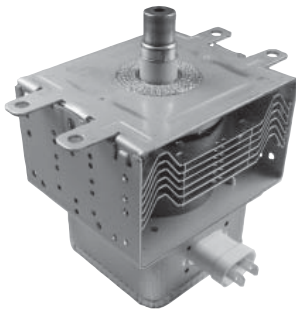
## Order No. 10QBP1006



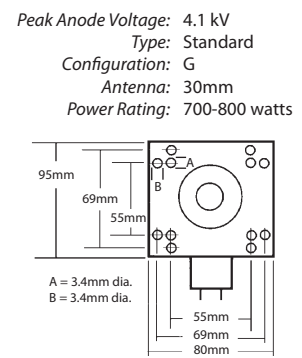
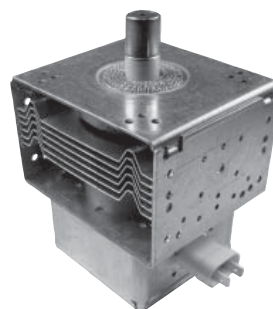
## Order No. 10QBP1004



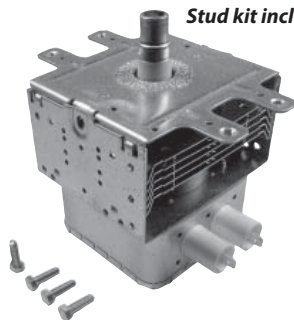
## Order No. 10QBP0235



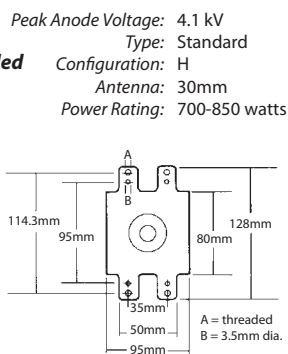
## Order No. 10QBP0246



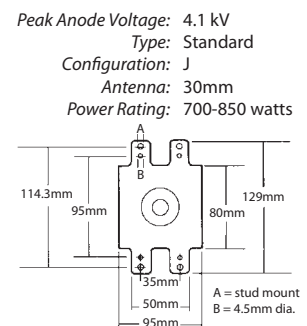
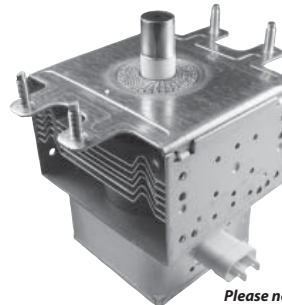
## Order No. 10QBP0231



**Stud kit included**

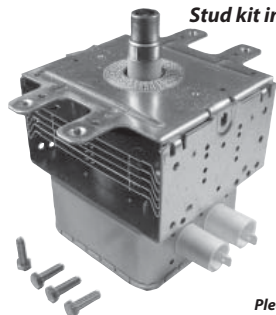


## Order No. 10QBP0229

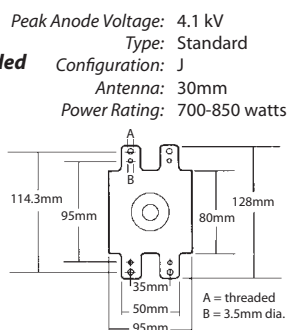


**Please note:** May have thread-in studs instead of permanent studs. May have individual filament insulators in place of dual.

## Order No. 10QBP0230

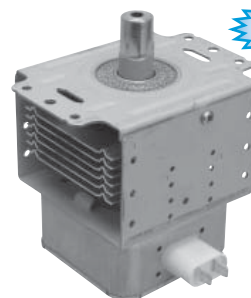


**Stud kit included**

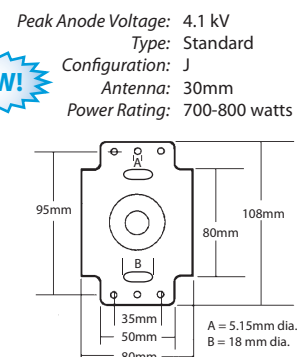


**Please note:** Replaces 10QBP0229 when stud kit is used.

## Order No. 10QBP0244



**NEW!**

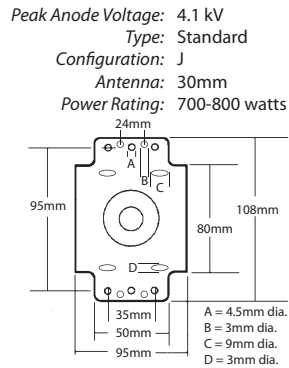
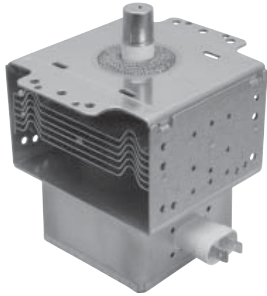


# MICROWAVE MAGNETRONS

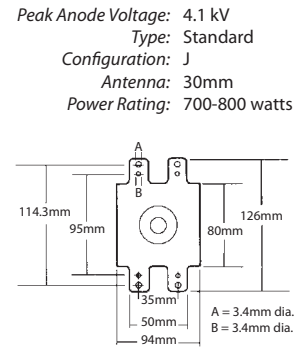
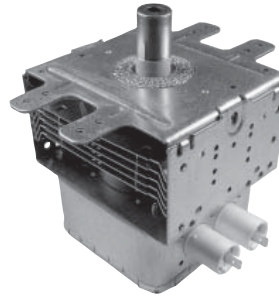
**FINDING YOUR MAGNETRON** All magnetrons are sorted in the following order for ease of locating:

- 1) kV rating: 4.35, 4.1, 3.8
- 2) Size: Standard, Compact, Subcompact
- 3) Configuration: E, GA, G, H, J, K
- 4) Antenna: 30, 20

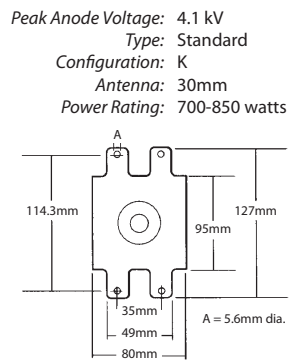
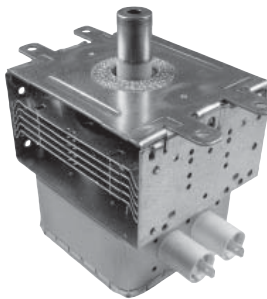
## Order No. 10QBP0275



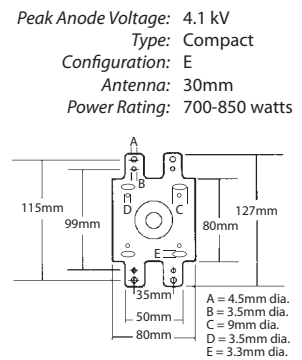
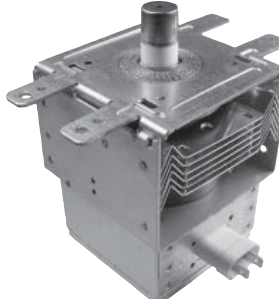
## Order No. 10QBP0259



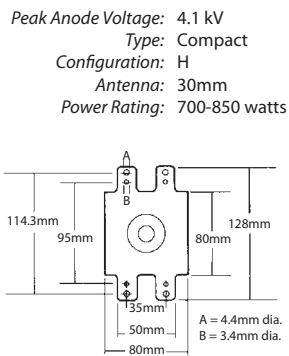
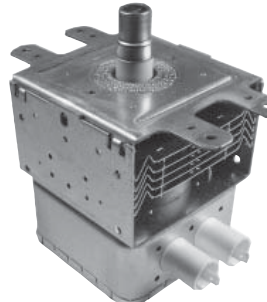
## Order No. 10QBP0232



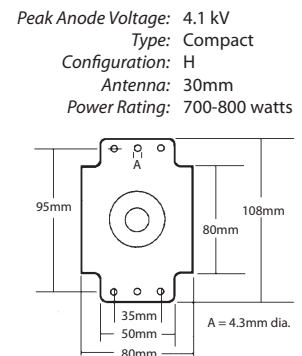
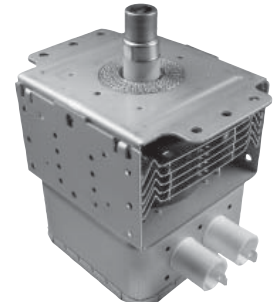
## Order No. 10QBP0239



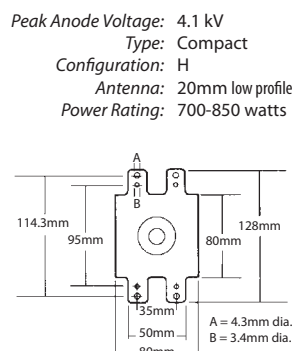
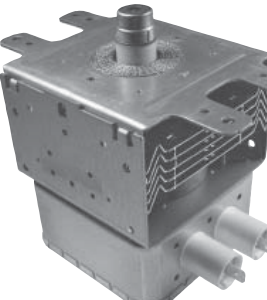
## Order No. 10QBP0226



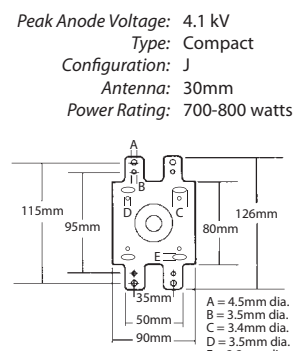
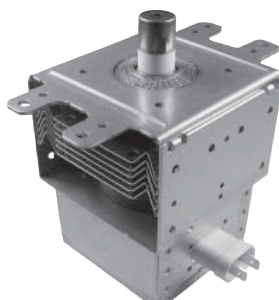
## Order No. 10QBP0249



## Order No. 10QBP0238



## Order No. 10QBP0234



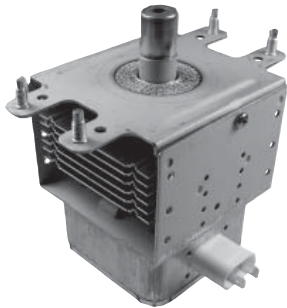


# MICROWAVE MAGNETRONS

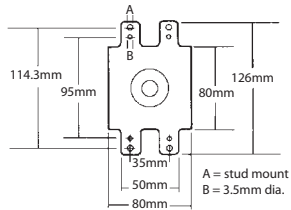
**FINDING YOUR MAGNETRON** All magnetrons are sorted in the following order for ease of locating:

- 1) kV rating: 4.35, 4.1, 3.8
- 2) Size: Standard, Compact, Subcompact
- 3) Configuration: E, GA, G, H, J, K
- 4) Antenna: 30, 20

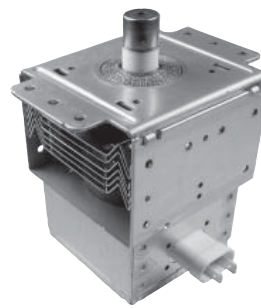
## Order No. 10QBP0227



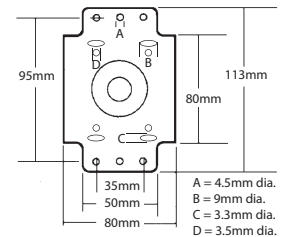
Peak Anode Voltage: 4.1 kV  
Type: Compact  
Configuration: J  
Antenna: 30mm  
Power Rating: 700-800 watts



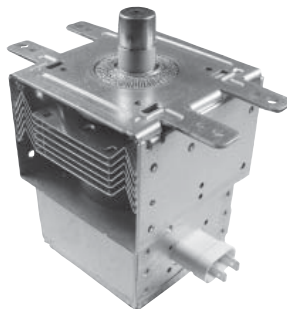
## Order No. 10QBP0243



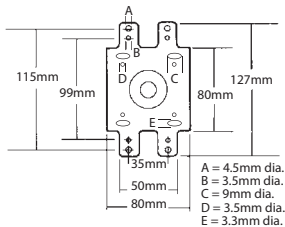
Peak Anode Voltage: 4.1 kV  
Type: Compact  
Configuration: J  
Antenna: 30mm  
Power Rating: 700-800 watts



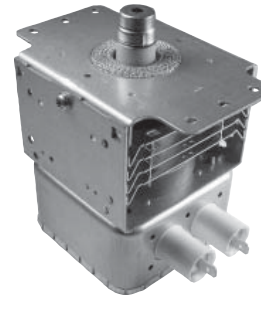
## Order No. 10QBP0228



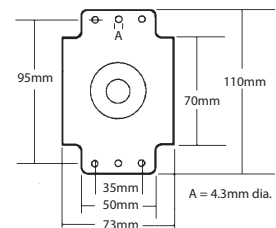
Peak Anode Voltage: 4.1 kV  
Type: Compact  
Configuration: K  
Antenna: 30mm  
Power Rating: 700-800 watts



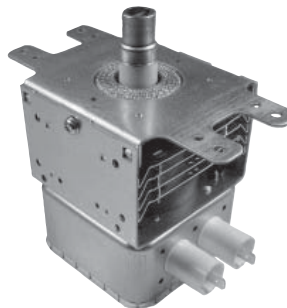
## Order No. 10QBP0300



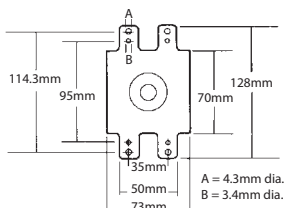
Peak Anode Voltage: 4.1 kV  
Type: Subcompact  
Configuration: H  
Antenna: 20mm low profile  
Power Rating: 500-600 watts



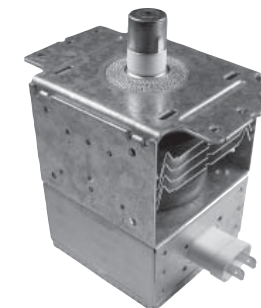
## Order No. 10QBP0311



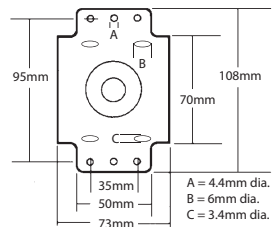
Peak Anode Voltage: 3.8 kV  
Type: Subcompact  
Configuration: H  
Antenna: 30mm  
Power Rating: 500-650 watts



## Order No. 10QBP0309



Peak Anode Voltage: 3.8 kV  
Type: Subcompact  
Configuration: H  
Antenna: 30mm  
Power Rating: 500 watts

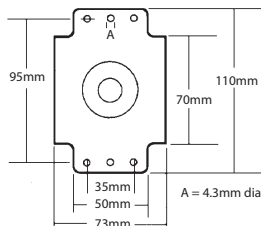


## Order No. 10QBP0315



Peak Anode Voltage: 3.8 kV  
Type: Subcompact  
Configuration: J  
Antenna: 30mm  
Power Rating: 500-600 watts

**NEW!**



## Order No. 98QB0928

**Magnetron Mounting Bolts**  
Pkg. of 4  
Size 5mm



## Order No. 98QB0929

**Magnetron Mounting Nuts**  
Pkg. of 4  
Size 5mm



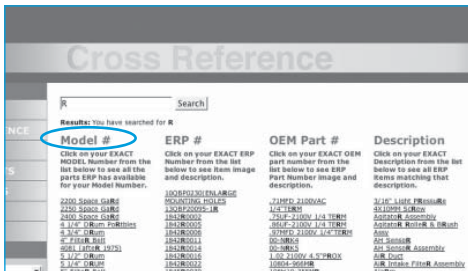
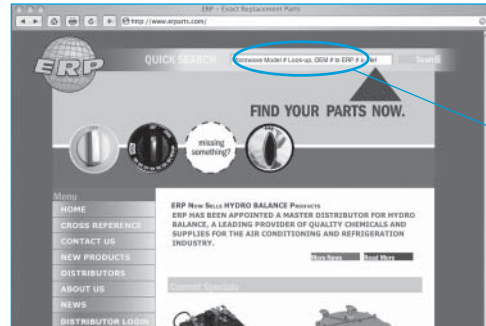
# MICROWAVE MAGNETRONS

Cross reference is on the web! Go to [www.erparts.com](http://www.erparts.com)

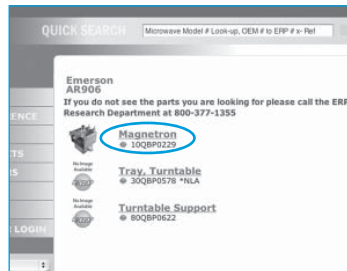
## 1

### Magnetron Lookup by Model #

Enter a model number in the **QUICK SEARCH** box (a) then click on search. If your model comes up, click on it and the magnetron and all the parts we presently have loaded for that model will come up showing the ERP part number. Many will show a picture next to the listing. If we have no record of the model number, "No Results Found" will appear. It is possible that you or your customer may have misread a letter or digit. Put in the beginning letter and number and all models starting with those letters/numbers will appear.



Click on your model # from the model number list.



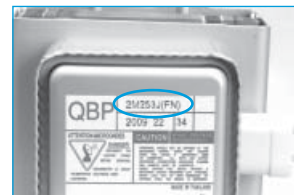
Click on your magnetron and a larger photo will appear.



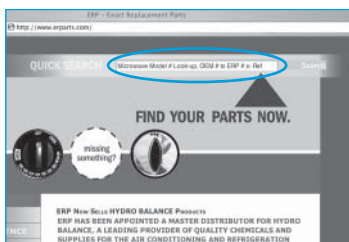
## 2

### Magnetron Lookup by Part #

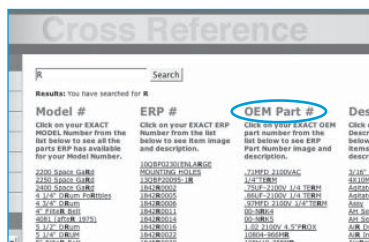
Enter the OEM's part number or the magnetron's manufacturer's number in the **QUICK SEARCH** box. Entering the part number or partial part number gives you a list with all possible parts using that number. If your part number comes up, click on it and the ERP magnetron will appear. If your number is not presently in our system, "No Results Found" will appear.



Magnetron manufacturing number



Enter OEM number or the manufacturing number in quick search.



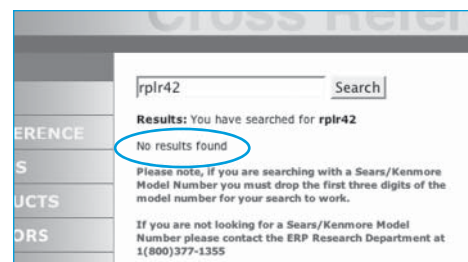
Click on your number from the OEM part number list and a larger photo will appear.



## 3

### "No Results Found"

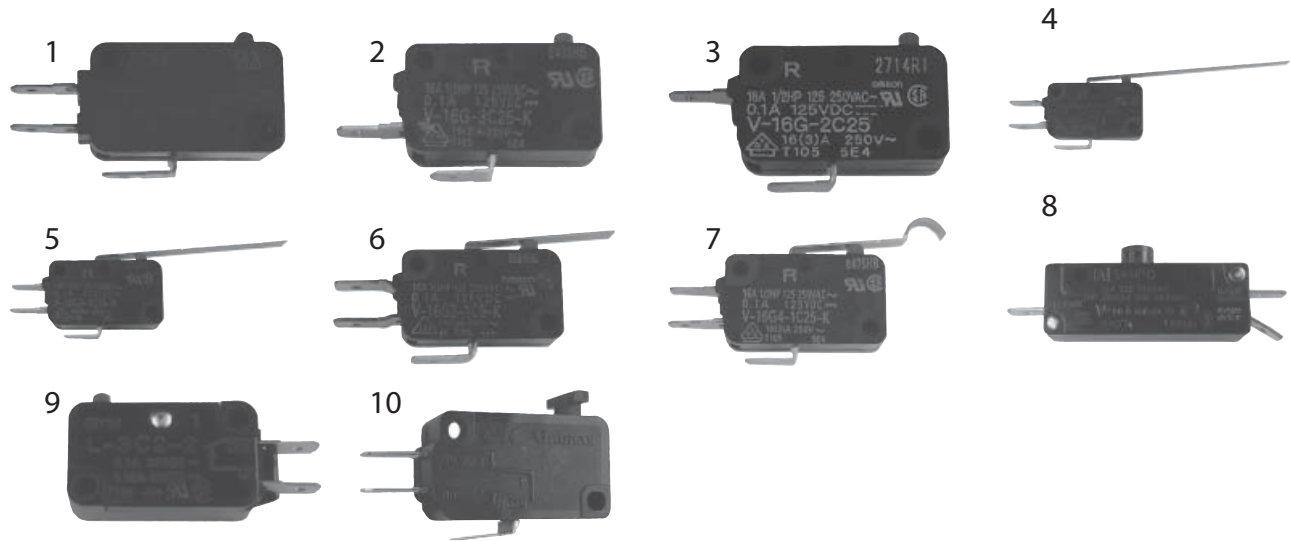
If "No Results Found" comes up, contact the ERP research department and we will look it up for you and add it to our web site. 1.800.377.1355



SEE PAGES 1-3 FOR MORE LOOK UP DETAILS!



# MICROWAVE SWITCHES



Pic	ERP#	Type	Application	Variety	Amp	Volt	Terminal	Lever Length	Lever Width
<b>Universal Replacement Parts</b>									
1	28QBP0491	Button	Universal	SPDT NO/NC	21	125/250	.020 x .187		
	28QBP0492	Button	Universal	SPDT NO/NC	21	125/250	.320 x .250		
	28QBP0493	Button	Universal Light Pressure	SPDT NO/NC	15	125/250	.020 x .187		
	28QBP0494	Button	Universal Light Pressure	SPDT NO/NC	15	125/250	.320 x .250		
	28QBP0495	Button	Universal	SPDT NO/NC	15	125/250	.020 x .187		
	28QBP0496	Button	Universal	SPDT NO/NC	15	125/250	.320 x .250		
	28QBP0540	Button	Lamp/Sensor	SPDT NO/NC	1	125	.020 x .187		
	28QBP0541	Button	Lamp/Sensor	SPDT NO/NC	1	125	.032 x .250		
2	28QBP0497	Button	Latch	SPST NO	15	125/250	.020 x .187		
	28QBP0498	Button	Latch	SPST NO	15	125/250	.320 x .250		
3	28QBP0499	Button	Monitor	SPST NC	15	125/250	.020 x .187		
	28QBP0500	Button	Monitor	SPST NC	15	125/250	.032 x .250		
4	28QBP0507	Extra Long Lever	Universal	SPDT NO/NC	15	125/250	.020 x .187	2-3/8"	5/32"
	28QBP0546	Extra Long Lever	Universal	SPDT NO/NC	15	125/250	.032 x .250	2-3/8"	5/32"
5	28QBP0503	Long Lever	Universal	SPST NC	15	125/250	.020 x .187	2"	5/32"
	28QBP0504	Long Lever	Universal	SPST NC	15	125/250	.032 x .250	2"	5/32"
6	28QBP0501	Short Lever	Universal	SPDT NO/NC	15	125/250	.020 x .187	1-1/16"	5/32"
	28QBP0502	Short Lever	Universal	SPDT NO/NC	15	125/250	.032 x .250	1-1/16"	5/32"
7	28QBP0505	Simulated Roller	Universal	SPDT NO/NC	15	125/250	.020 x .187	1-1/16"	5/32"
	28QBP0506	Simulated Roller	Universal	SPDT NO/NC	15	125/250	.032 x .250	1-1/16"	5/32"
8	28QBP0610	Commercial Duty	Commercial	SPDT NO/NC	25	125/250	.250		
<b>Exact Replacement Parts</b>									
9	28QBP0839	Replaces Panasonic Latch	Exact Replacement	SPST NO	3	277	.187		
10	28QBP0841	Replaces GE T Type (WB24X5167)	Exact Replacement	SPDT NO/NC	15	277	.187		

# MICROWAVE THERMAL FUSES

Rated for continuous operating. Currents up to 10 amps @ 250VAC and 15 amps @ 120VAC. Open temperature tolerance +0°, -4°C. Used in microwave ovens, appliances, personal care products, office machines, portable heaters and industrial equipment. **Package of 4**



ERP #	°F	°C	ERP #	°F	°C	ERP #	°F	°C
22QBP072	162	72	22QBP109	228	109	22QBP184	363	184
22QBP077	171	77	22QBP117	245	117	22QBP192	378	192
22QBP084	183	84	22QBP121	250	121	22QBP216	421	216
22QBP091	196	91	22QBP128	262	128	22QBP228	442	228
22QBP093	199	93	22QBP144	291	144	22QBP240	464	240
22QBP098	208	98	22QBP152	306	152			
22QBP104	219	104	22QBP169	336	169			

Order No. CC18 (pkg of 12)

## Crimp Connectors



High temp - fits wire size #22-18AWG. Allows for easy replacement of thermal fuses. Eliminates heat problems when soldering thermal fuses. Just cut out thermal fuse leaving leads intact. Crimp in new thermal fuse with wire crimping tool.

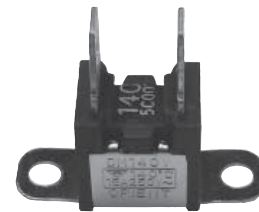
Encased in electronically insulated case with 2 male spade terminals for easy field replacement. Rated 10 amp @ 250VAC, 15 amp @ 120VAC. Open temperature tolerance +0°, -4°C.

**Sold individually**

ERP #	°F	°C	Terminals
21QBP077V	171	77	1/4"
21QBP084V	183	84	1/4"
21QBP098V	208	98	1/4"
21QBP109V-1	228	109	1/4"
21QBP110V	230	110	1/4"
21QBP117V	243	117	1/4"
21QBP121V-1	250	121	3/16"
21QBP128V	262	128	1/4"
21QBP144V-1	291	144	3/16"
21QBP152V	306	152	1/4"
21QBP152V-1	306	152	3/16"



Encased thermal fuses - **special design**.  
Rated 15 amp @ 120VAC. **Sold individually**



ERP #	°F	°C	Terminals	Terminal Style
23QBP120V	248	120	1/4"	Vertical
23QBP120H	248	120	1/4"	Horizontal
23QBP140V	284	140	1/4"	Vertical
23QBP143V	289	143	1/4"	Vertical
23QBP145V	293	145	1/4"	Vertical
23QBP150H	302	150	1/4"	Horizontal
23QBP190H-1	374	190	3/16"	Horizontal

## FYI: Thermal fuses' nomenclature for ease of ordering

Standard prefix for thermal fuses  
21 = Encased  
22 = Non-encased  
23 = Special design

**21QBP121V-1**

Temperature measured in °C

Terminal style  
V = vertical  
H = horizontal

Terminal size  
-1 = 3/16"  
no -1 = 1/4"

# MICROWAVE TRANSFORMERS

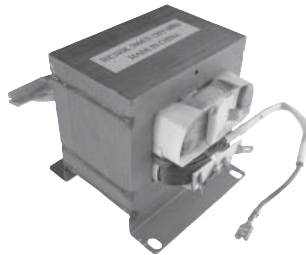
## UNIVERSAL HV TRANSFORMERS

### Selecting the correct replacement

1. Determine the kV requirement of your magnetron by using the chart on the right.
2. Match your magnetron's kV requirement to the HV transformers on this page. Carefully check dimensions to make sure replacement will fit in allowable space.

### Order No. 16QBP0293

Universal  
4.1 kV output (after doubling circuit)  
700-850 watts, 3.3 volt, 300mA  
Horizontal stack type  
3" H x 4-1/8" W x 3-7/8" D



Installation instructions (see wiring diagram on the next page)

1. Place transformer in position so that the label on top of the unit is correctly oriented and readable.
2. The two terminals located on the lower windings are the primary terminals for 120V line input.
3. The single terminal on the upper windings is the high voltage secondary terminal and is connected to the low side of the capacitor.
4. The flying lead located at the front of the unit is connected to the high side of the capacitor. The flying lead wire with the insulated terminal is connected to the "FA" terminal of the magnetron.

### Order No. 16QBP0296

Universal  
4.35 kV output (after doubling circuit)  
900-1000 watts, 3.2 volt, 350mA  
Horizontal stack type  
3-7/8" W x 5-1/4" D x 3-1/2" H



Installation instructions (see wiring diagram on the next page)

1. Place transformer in position so that the label on top of the unit is correctly oriented and readable.
2. The two terminals located on the lower windings are the primary terminals for 120V line input.
3. The single red wire off the backside of the upper windings is the high voltage secondary lead and is connected to the low side of the capacitor.
4. The two leads connected to the insulated terminal block are the filament leads and are connected to the filament terminal coming off of the magnetron. The single wire side is connected to the "FA" terminal. The flying lead coming out of the dual filament terminal block is connected to the high side of the capacitor (diode side).

### Magnetron Requirements for Universal Transformers

Match up the magnetron requirements and kV ratings in this chart to the part numbers on this page. Please note that using the wrong kV rated transformer will result in a magnetron malfunction such as ... no oscillation, overheating, and substantially reduced magnetron life.

Industry #	kV	Industry #	kV	Industry #	kV
0M52	4.1	2M186	UC	2M248	4.35
0M55	4.1	2M188	4.1	2M250	UC
0M72	4.1	2M189	4.1	2M253	4.1
0M75	4.1	2M189	3.8	2M254	4.1
2M101	4.1	2M200	4.1	2M258	4.1
2M103	4.1	2M203	UC	2M259	UC
2M105	4.1	2M204	4.1	2M261	4.35
2M106	4.1	2M205	UC	2M262	UC
2M107	4.1	2M207	3.8	2M266	UC
2M108	4.1	2M208	4.1	2M268	4.35
2M115	4.1	2M209	3.8	2M269	4.35
2M115	UC	2M210	4.1	2M282	4.35
2M120	UC	2M211	3.8	2M45	UC
2M121	UC	2M213	3.8	2M500	4.1
2M125	UC	2M214	4.1	2M53	4.1
2M128	4.1	2M216	3.8	2M53	UC
2M130	UC	2M217	4.1	2M53A	UC
2M131	UC	2M218	4.1	2M57	4.1
2M137	UC	2M219	4.1	2M700	4.1
2M140	4.1	2M220	3.8	2M71	4.1
2M141	UC	2M221	3.8		
2M142	UC	2M222	4.1		
2M150	UC	2M223	3.8		
2M151	UC	2M224	4.1		
2M152	4.1	2M226	4.1		
2M153	UC	2M228	4.1		
2M156	UC	2M229	4.1		
2M157	4.1	2M230	3.8		
2M158	4.1	2M231	3.8		
2M160	4.1	2M233	4.1		
2M161	4.1	2M234	3.8		
2M162	UC	2M236	4.1		
2M163	4.1	2M238	4.1		
2M164	UC	2M240	4.1		
2M167	4.1	2M244	4.35		
2M170	4.1	2M245	4.1		
2M172	4.1	2M246	4.35		
2M181	UC	2M247	4.35		

**UC** is an uncommon kV rating. Magnetrons with uncommon kV ratings cannot use a universal transformer.

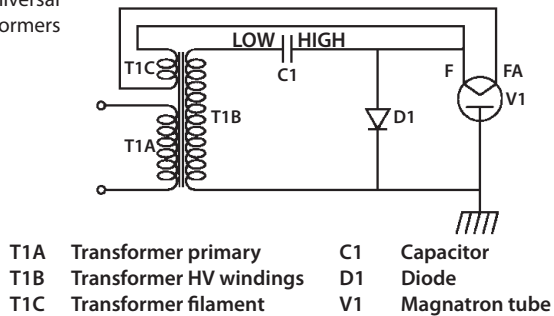
There is no universal replacement for a 3.8kV rated magnetron.

# MICROWAVE TRANSFORMERS

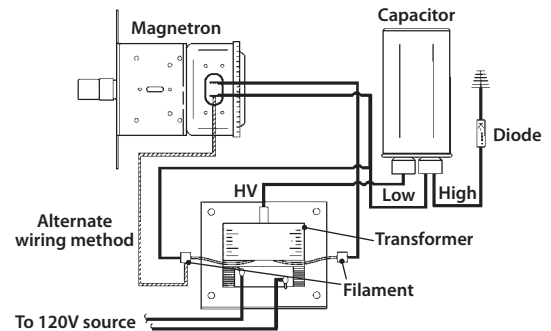
## Wiring Instructions

For Universal Transformers

Half-wave doubler L-C stabilized power supply circuit for typical microwave oven



Wiring diagram for typical microwave oven power supply

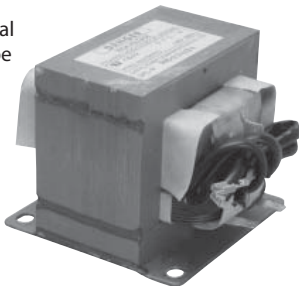


## EXACT REPLACEMENT HV TRANSFORMERS

Order No. 16QBP4274

**Sharp**

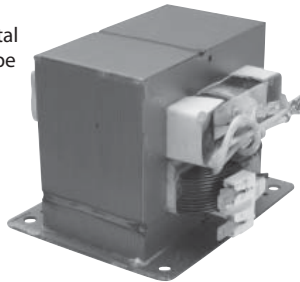
120 volt  
Horizontal  
stack type



Order No. 16QBP4360

**Sharp**

120 volt  
Horizontal  
stack type

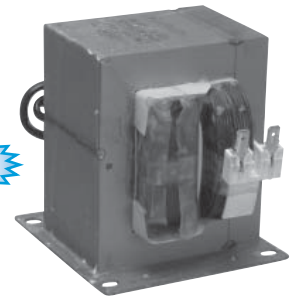


Order No. 16QBP4374

**Sharp**

120 volt  
Horizontal  
stack type

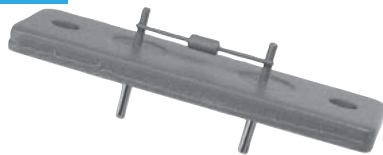
**NEW!**



## MICROWAVE THERMISTORS, SENSORS, VARISTORS

Order No. 17QBP0642

**Sharp**



Order No. 17QBP2172

**Sharp**



Order No. 17QBP2971

**Sharp**



Order No. 17QBP0260

**Universal**

Voltage: 120  
Applied Voltage: 130  
Clamping Voltage: 340  
Amps: 4500  
Energy: 38 joules/2MS



MICROWAVE

# MICROWAVE THERMOSTATS

Applications include hi-limit cutoff thermostats for magnetrons and also as oven cavity safety thermostats. On an old thermostat, "N" & "S" denote temperature in °C, "L" denotes temperature in °F.

## 1/4" Horizontal Terminal Series

50° differential, tolerance: open = -7°F, close ±12°F. Mounting holes are 25mm center to center. 15 amp, 120 Volt.

ERP #	°F	°C
18QBP088H	190	88
18QBP093H	199	93
18QBP099H	210	99
18QBP110H	230	110
18QBP121H	250	121
18QBP127H	261	127
18QBP138H	280	138
18QBP145H	293	145
18QBP149H	300	149
18QBP160H	320	160



## 1/4" Vertical Terminal Series

Mounting holes are 25mm center to center. 15 amp, 120 Volt.

ERP #	°F	°C
18QBP060V	140	60
18QBP077V	171	77
18QBP090V	194	90
18QBP094V	201	94
18QBP122V	252	122
18QBP135V	275	135
18QBP145V	293	145



## 3/16" Horizontal Terminal Series

Mounting holes are 25mm center to center. 15 amp, 120 Volt.

ERP #	°F	°C
18QBP105H-1	221	105
18QBP110H-1	230	110
18QBP115H-1	239	115
18QBP135H-1	275	135



## 3/16" Vertical Terminal Series

Mounting holes are 25mm center to center. 15 amp, 120 Volt.

ERP #	°F	°C
18QBP090V-1	194	90
18QBP110V-1	230	110
18QBP122V-1	252	122
18QBP135V-1	275	135



## Special Wide Mount Bracket Horizontal

Mounting holes are 30mm center to center. 1/4" terminals, 15 amp, 120 Volt.

ERP #	°F	°C
18QBP120H-W	248	120
18QBP150H-W	302	150



## Special Wide Mount Bracket Vertical

Mounting holes are 30mm center to center. 1/4" terminals, 15 amp, 120 Volt.

ERP #	°F	°C
18QBP180V-1W	356	180



## FYI: Thermostats' nomenclature for ease of ordering

Standard prefix for thermostats

Temperature measured in °C

-1 = 3/16" terminals  
no -1 = 1/4" terminals

Terminal style  
V = vertical  
H = horizontal

Wide mount bracket

18QBP150H-1W

# MICROWAVE TURNTABLE COUPLINGS

**Order No. 80QBP8695**

**Emerson**

Drive type: Tri-Wing  
Drive dia.: 1-1/4"  
Shaft style: 1/4" D  
Shaft length: 1/2"



**Order No. 80QBP8933**

**Emerson**

Drive type: Tri-Wing  
Drive dia.: 1-5/16"  
Shaft style: 1/4" D  
Shaft length: 9/16"



**Order No. 80QBP9011**

**GE**

Drive type: Tri-Wing  
Drive dia.: 2"  
Shaft style: 1/4" D  
Shaft length: 3/4"  
Replaces GE #WB06X10138



**Order No. 80QBP1781**

**Goldstar**

Drive type: Tri-Wing  
Drive dia.: 1-3/8"  
Shaft style: 1/4" D  
Shaft length: 5/8"



**Order No. 80QBP4039**

**Goldstar**

Drive type: Tri-Wing  
Drive dia.: 1-3/8"  
Shaft style: 1/4" D  
Shaft length: 1/2"



**Order No. 80QBP8676**

**Goldstar**

Drive type: Tri-Wing  
Drive dia.: 1-1/4"  
Shaft style: 1/4" D  
Shaft length: 19/32"



**Order No. 80QBP2193**

**Panasonic**

Drive type: Tri-Wing  
Drive dia.: 1-1/4"  
Shaft style: 1/4" D  
Shaft length: 15/16"



**Order No. 80QBP8786**

**Panasonic**

Drive type: Tri-Wing  
Drive dia.: 1-5/16"  
Shaft style: 1/4" D  
Shaft length: 9/16"



**Order No. 80QBP3112**

**Samsung**

Drive type: Tri-Wing  
Drive dia.: 1-9/16"  
Shaft style: 1/4"  
Shaft length: 13/16"



**Order No. 80QBP8645**

**Samsung**

Drive type: Tri-Wing  
Drive dia.: 1-1/2"  
Shaft style: 1/4" D  
Shaft length: 3/4"



**Order No. 80QBP0571**

**Sharp**

Drive type: Square  
Drive dia.: 15/16"  
Shaft style: 1/4" Double Flat  
Shaft length: 7/16"



**Order No. 80QBP0886**

**Sharp**

Drive type: Tri-Wing  
Drive dia.: 1-3/4"  
Shaft style: 1/4" X  
Shaft length: 17/32"



MICROWAVE



# MICROWAVE TURNTABLE COUPLINGS

## Order No. 80QBP1352

**Sharp**

Drive type: Square  
Drive dia.: 15/32"  
Shaft style: 1/4" Double Flat  
Shaft length: 3/4"



## Order No. 80QBP1771

**Sharp**

Drive type: Square  
Drive dia.: 7/16"  
Shaft style: 1/4" Double Flat  
Shaft length: 3/4"



## Order No. 80QBP2690

**Sharp**

Drive type: Tri-Wing  
Drive dia.: 1-13/16"  
Shaft style: 1/4" X  
Shaft length: 7/16"



## Order No. 80QBP8387

**Sharp**

Drive type: Round  
Drive dia.: 1/4"  
Shaft style: 5/16" X  
Shaft length: 1-1/4"



## Order No. 80QBP8568

**Sharp**

Drive type: Round  
Drive dia.: 2"  
Shaft style: 1/4" Double Flat  
Shaft length: 1"



## Microwave Turntable Motor Cross Reference is on the web! Go to [www.erparts.com](http://www.erparts.com)

Follow these easy steps to successfully find your turntable motor using the **QUICK SEARCH** feature at the top of the home page or by using the **CROSS REFERENCE** button along the left side in the navigation bar.

**STEP 1** In the **QUICK SEARCH** box or on the **CROSS REFERENCE** page, type in your turntable number, manufacturing number, or the microwave model number, and then click **SEARCH**.



Turntable  
manufacturing number

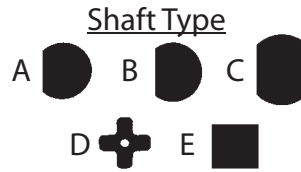
**STEP 2** By typing in the number or part of the number, gives you a list with possible MODEL #, ERP#, OEM PART #, and DESCRIPTIONS. Now move your cursor over the correct part # in one of the columns and click on it.

**STEP 3** Once selection has been made, you will see your part or model with parts listed. Now just click on your part name (a) to get even more information on that part.

If "No Results Found" or if you do not see the item your are searching for, call the ERP research department and we will look it up and add it to our online cross reference.

**SEE PAGES 1-3 FOR MORE LOOK UP DETAILS!**

# MICROWAVE TURNTABLE/STIRRER MOTORS



Order No. 15QBP4173

**Panasonic**

120 volts  
29.2 RPM  
2.5 watts  
Shaft length: 13/16"  
Shaft diameter: 0.222"  
Shaft type:



OEM	ERP#	Volts	Shaft Type	Shaft Length	Shaft Dia.	RPM	Watts
Daewoo	15QBP4172	120	A	9/16"	0.275"	6	3
Emerson	15QBP0685	120	A	7/16"	0.275"	2.5/3	2.5/2
	15QBP4200						
	15QBP4214	120	B	1/2"	0.275"	4/4.8	4
	15QBP1017	21	B	9/16"	0.275"	2.5/3	3/2.5
GE	15QBP3932	21	B	5/8"	0.275"	5/6	3
	15QBP0111	120	B	9/16"	0.275"	3	2.8
Goldstar	15QBP0222	21	B	7/16"	0.275"	2.5/3	3
	15QBP2375	21	E	5/8"	5/16" SQ	29.1/34.9	3.0
	15QBP3596	120	E	7/8"	3/16" SQ	34.9	2.8
	15QBP4102	120	B	11/16"	0.275"	3	2.8
	15QBP4204	120	B	7/16"	0.275"	6	2.8

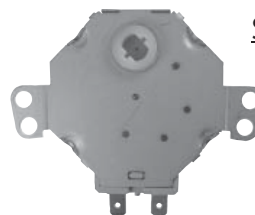
OEM	ERP#	Volts	Shaft Type	Shaft Length	Shaft Dia.	RPM	Watts
Panasonic	15QBP0851	120	A	5/8"	0.275"	5/6	3/2.5
	15QBP1199	120	B	7/16"	0.275"	3	3
	15QBP4186	120	A	1/2"	0.275"	6	4
Samsung	15QBP1017	21	B	9/16"	0.275"	2.5/3	3/2.5
	15QBP3932	21	B	9/16"	0.275"	5/6	3/2.5
Sharp	15QBP0451	120	C	3/8"	0.275"	3	2.5
	15QBP1344	120	D	17/32"	0.312"	2.5/3	3.3/2.8
	15QBP3797	120	C	3/8"	0.275"	29.1/34.9	3/2.5
	15QBP4184	120	D	5/16"	0.275"	3	2
	15QBP4185	120	A	7/16"	.275"	6	2



Shaft Type



OEM	ERP#	Volts	Shaft Length	Shaft Dia.	RPM	Watts
Goldstar	15QBP0122	21	9/16"	0.275"	5/6	3
	15QBP4166	21	7/16"	0.275"	2.5/3	3



Shaft Type A  B 

PLEASE NOTE:  
Shaft type shown engages a recess

OEM	ERP#	Volts	Shaft Type	Shaft Length	Shaft Dia.	RPM	Watts
Sharp	15QBP0192	120	A	7/16"	0.265"	5/6	2.7/2.4
	15QBP0223	120	B	-	-	10/12	2.7/2.4

MICROWAVE

# MICROWAVE TURNTABLE SUPPORTS

**Order No. 80QBP3136**

**Daewoo**

Roller Ring  
Plastic  
7-1/2" dia.  
1/2" roller dia.



**Order No. 80QBP3566**

**Daewoo**

Roller Ring  
Plastic  
9-3/16" dia.  
9/16" roller dia.



**Order No. 80QBP8848**

**Daewoo**

Roller Ring  
Plastic  
8-3/4" dia.  
9/16" roller dia.



**Order No. 80QBP1602**

**Goldstar**

Roller Ring  
Plastic  
7-1/4" dia.  
11/16" roller dia.



**Order No. 80QBP1933**

**Goldstar**

Roller Ring  
Plastic  
8-11/16" dia.  
11/16" roller dia.



**Order No. 80QBP2142**

**Goldstar**

Tri-wing  
Plastic shaft  
5-3/8" ring radius  
9/16" roller dia.  
1/4" D roller type  
11/16" shaft length



**Order No. 80QBP4011**

**Goldstar**

Tri-wing  
Plastic shaft  
3-15/16" ring radius  
9/16" roller dia.  
1/4" D roller type  
9/16" shaft length



**Order No. 80QBP7160**

**Goldstar**

Roller Ring  
Plastic  
9-7/8" dia.  
9/16" roller dia.



**Order No. 80QBP7161**

**Goldstar**

Tri-wing  
Plastic shaft  
4-5/8" ring radius  
9/16" roller dia.  
1/4" D roller type  
1/2" shaft length



**Order No. 80QBP8331**

**Goldstar**

Roller Ring  
Plastic  
11-3/16" dia.  
5/8" roller dia.



**Order No. 80QBP8609**

**Goldstar**

Roller Ring  
Plastic  
9-1/2" dia.  
1/2" roller dia.



**Order No. 80QBP8701**

**Goldstar**

Tri-wing  
Plastic shaft  
4-3/4" ring radius  
11/16" roller dia.  
1/4" D roller type  
11/16" shaft length



**Order No. 80QBP8717**

**Goldstar**

Tri-wing  
Plastic shaft  
5-1/2" ring radius  
9/16" roller dia.  
1/4" D roller type  
21/32" shaft length



**Order No. 80QBP8723**

**Goldstar**

Tri-wing  
Plastic shaft  
4-3/8" ring radius  
9/16" roller dia.  
1/4" D roller type  
9/16" shaft length



**Order No. 80QBP8819**

**Goldstar**

Roller Ring  
Plastic  
9-5/8" dia.  
5/8" roller dia.



# MICROWAVE TURNTABLE SUPPORTS

**Order No. 80QBP8887**

**Goldstar**

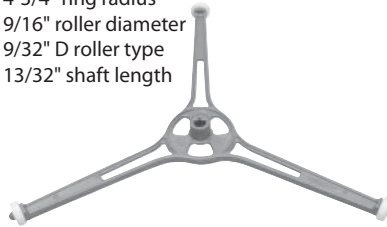
Tri-wing  
Plastic shaft  
4-3/4" ring radius  
9/16" roller diameter  
6/32" D roller type  
3/4" shaft length



**Order No. 80QBP8929**

**Goldstar**

Tri-wing  
Plastic shaft  
4-3/4" ring radius  
9/16" roller diameter  
9/32" D roller type  
13/32" shaft length



**Order No. 80QBP0828**

**Panasonic**

Roller Ring  
Plastic (Almond)  
7-1/2" diameter  
9/16" roller diameter



**Order No. 80QBP2222**

**Panasonic**

Roller Ring  
Plastic  
10-3/16" diameter  
9/16" roller diameter



**Order No. 80QBP7122**

**Panasonic**

Roller Ring  
Plastic  
10-1/2" diameter  
5/8" roller diameter



**Order No. 80QBP7139**

**Panasonic**

Roller Ring  
Plastic  
7-1/4" diameter  
9/16" roller diameter



**Order No. 80QBP8654**

**Panasonic**

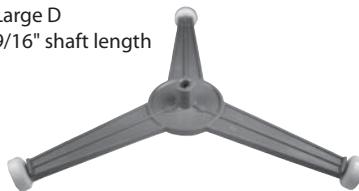
Roller Ring  
Plastic  
9-15/16" diameter  
9/16" roller diameter



**Order No. 80QBP3199**

**Samsung**

Tri-wing  
Plastic shaft  
4-1/4" ring radius  
3/4" roller diameter  
Large D  
9/16" shaft length



**Order No. 80QBP8598**

**Samsung**

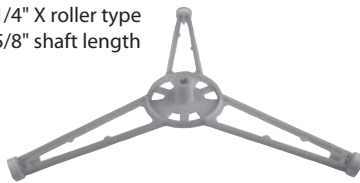
Roller Ring  
Plastic  
7-3/4" diameter  
9/16" roller diameter



**Order No. 80QBP1021**

**Sharp**

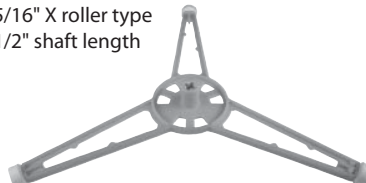
Tri-wing  
Plastic shaft  
4-13/16" ring radius  
9/16" roller diameter  
1/4" X roller type  
5/8" shaft length



**Order No. 80QBP1110**

**Sharp**

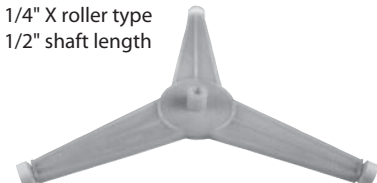
Tri-wing  
Plastic shaft  
4-13/16" ring radius  
9/16" roller diameter  
5/16" X roller type  
1/2" shaft length



**Order No. 80QBP1217**

**Sharp**

Tri-wing  
Plastic shaft  
4-3/8" ring radius  
9/16" roller diameter  
1/4" X roller type  
1/2" shaft length



MICROWAVE

# MICROWAVE TURNTABLE SUPPORTS

## Order No. 80QBP1219

Roller Ring  
Plastic  
8-3/16" diameter  
9/16" roller diameter



**Sharp**

## Order No. 80QBP1287

Tri-wing  
Plastic shaft  
5-1/2" ring radius  
9/16" roller diameter  
5/8" 8pt star roller type  
3/8" shaft length



**Sharp**

## Order No. 80QBP2831

Tri-wing  
Metal shaft  
5-3/8" ring radius  
11/16" roller diameter  
5/16" Sq. roller type



**Sharp**

## Order No. 80QBP2991

Roller Ring  
Plastic  
8-1/4" diameter  
9/16" roller diameter



**Sharp**

## Order No. 80QBP3122

Tri-wing  
Plastic shaft  
4-13/16" ring radius  
5/8" roller diameter  
1/4" X roller type  
5/8" shaft length



**Sharp**

## Order No. 80QBP3142

Tri-wing  
Metal shaft  
6-1/4" ring radius  
15/16" roller diameter



**Sharp**

## Order No. 80QBP3644

Tri-wing  
Plastic shaft  
4-1/2" ring radius  
9/16" roller diameter  
1/4" X roller type  
1/2" shaft length



**Sharp**

## Order No. 80QBP3689

Tri-wing  
Metal shaft  
5-3/16" ring radius  
5/8" roller diameter  
5/16" Sq. roller type



**Sharp**

## Order No. 80QBP8541

Tri-wing  
Plastic shaft  
4-7/16" ring radius  
9/16" roller diameter  
1/4" X roller type  
5/8" shaft length



**Sharp**

## Order No. 80QBP8633

Tri-wing  
Plastic shaft  
4-7/16" ring radius  
9/16" roller diameter  
1/4" X roller type  
5/8" shaft length



**Sharp**

# MICROWAVE TURNTABLE TRAYS

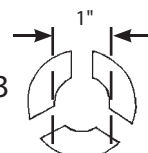
## Tray Drives



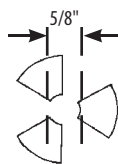
T1



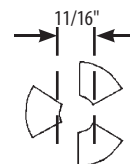
T3



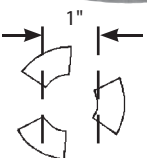
T4



T5



T7



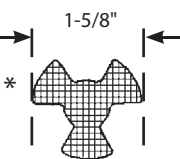
T8



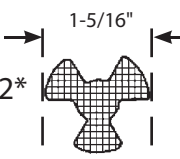
T10



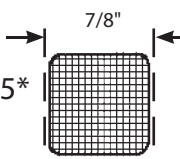
T11\*



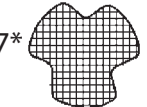
T12\*



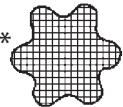
T15\*



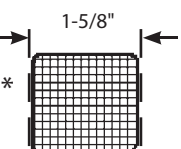
T17\*



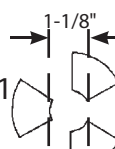
T18\*



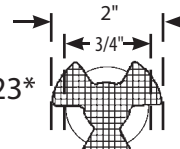
T19\*



T21



T23\*



\*Please Note:  
Tray drives shown with cross-hatch engage a recess having the outline indicated in the bottom center of the tray.

Dia.	ERP#	Drive	Track ID	Track OD	Ridge ID	Ridge OD	Description
9-5/8"	30QBP2525		6-1/2"	7-5/8"	7-5/8"		Has 3 small rectangular feet, 6-7/8" apart
9-5/8"	30QBP4117	T4	6-3/4"	7-1/16"	7-1/16"		Has 3 small rectangular feet, 6-7/8" apart
10"	30QBP4110	T21	7-1/2"	8-5/8"			
10-1/16"	30QBP4143	T23	6-15/16"	9-1/8"			Has 3 feet 1/4" high, 5-3/16" center - center
10-1/4"	30QBP0568	T5	7"	8"			Has 6 feet, 3/32" high on 8-3/4" circle
10-1/4"	30QBP1252		6-7/16"	7-9/16"	7-9/16"		Has 3 small rectangular feet on ridge
10-9/16"	30QBP4132	T23	6-15/16"	8-5/8"			Has 3 feet 3/16" high, 5-1/4" center - center
10-5/8"	30QBP2278	T23	7"	9"			Has 3 feet, 5-1/4" apart, 3/16" high
10-5/8"	30QBP3019	T11	7"	8-5/8"			Has 3 feet, 5-1/4" apart
10-3/4"	30QBP0057		8"	9"	9"		Slightly raised 2" diameter circle in center
10-3/4"	30QBP1564	T3	7-7/8"	8-7/8"			Has 3 feet, 8-3/8" apart, 1/4" high
11"	30QBP0061		8-1/4"	9"			
11-1/4"	30QBP1002		8"	9-1/8"	9-1/8"	10"	
11-3/8"	30QBP3675	T7	7"	8-7/8"			Has 3 feet, 5-1/8" apart
11-1/2"	30QBP2435	T5	5-3/4"	7-3/4"			Has 3 tapered glass feet, 5-1/8" apart
11-5/8"	30QBP1111		8-1/4"	8-7/8"	8-7/8"		Has 1 ridged and track raised, track ID bevelled
11-15/16"	30QBP2415	T5	8"	10-7/16"			
12"	30QBP0649	T5	7-5/8"	9-3/8"			
12"	30QBP1145		8"	9-1/4"			Has 3 feet (dashes) 1/64" high, 8" center - center
12"	30QBP1768	T3	8"	9"			
12"	30QBP4111	T5	8"	10-3/8"			
<b>NEW!</b> 12"	30QBP4160	T7	7-3/4"	9"	9"		Has 3 feet, 1/8" high, 8-3/4" center - center
12-7/16"	30QBP0793	T5	7-1/8"	8-7/16"			Has 3 feet, 5-1/2" apart, 3/16" high
12-7/16"	30QBP4124	T5	3-3/16"	9-5/8"			Has 3 feet at 3-16" high, 5-1/2" center - center
12-7/16"	30QBP4145	T5	7-3/16"	10"	10"		Has 3 feet at 1/4" high, 5-1/2" center - center
12-1/2"	30QBP1848	T7	8-1/4"	10-1/4"			Has 3 feet, 6-5/16" apart, 3/16" high Also fits GE WB39X10003
12-5/8"	30QBP0254	T5	8"	11-1/8"			
12-5/8"	30QBP1274		7-3/4"	8-7/8"			Has small rectangular feet, 8" apart



# MICROWAVE TURNTABLE TRAYS

See page 136 for drive tray profiles

Dia.	ERP#	Drive	Track ID	Track OD	Ridge ID	Ridge OD	Description
12-5/8"	30QBP2418		8-1/16"	9-1/4"	9-1/4"		Has 3 small rectangular feet on ridge
12-3/4"	30QBP0663	T5	8-1/4"	11-1/4"			
12-7/8"	30QBP3538				10-1/2"		White ceramic
13"	30QBP0565				10-7/8"	12-1/4"	Metal, black with white spray
13"	30QBP4026		8-11/16"	9-3/4"		9-3/4"	Has 3 small rectangular feet on ridge
13-1/4"	30QBP0901	T3	7-7/8"	8-7/8"			Has 3 feet, 9-3/4" apart, 3/16" high
13-1/4"	30QBP2008				10-3/8"	11-5/8"	Black metal tray, 3/4" deep
13-1/4"	30QBP3031	T3	7-7/8"	8-7/8"	8-7/8"		OD on ridge is tapers, 3 round feet, 9-1/4" apart
13-3/8"	30QBP4119	T5	8"	11"			Has 3 tapered feet, 6" apart, 7/32" high
13-9/16"	30QBP0331	T5	8-1/4"	10-7/8"			Has 3 feet, 6-5/16" apart, 3/16" high
13-5/8"	30QBP2782	T7	8-1/4"	10-1/4"			Has 3 round glass feet, 6-3/8" apart, 1/4" high
13-13/16"	30QBP0570	T15	8-5/8"	10-1/4"			Has 3 tapered feet, 6-3/16" apart, 1-4" high
14-1/8"	30QBP0766	T5	9-3/4"	11"			Has 3 feet, 7-3/4" apart, 1/8" high
14-3/16"	30QBP0349		9-5/8"	10-7/8"		10-7/8"	No feet, rests on raised ridge
14-3/16"	30QBP4099		8"	9-1/4"		9-1/4"	Has 3 small rectangular feet on ridge
14-3/16"	30QBP4107		8-5/8"	9-3/4"		9-3/4"	Has 3 small rectangular feet on ridge
14-3/16"	30QBP4630	T7	8-1/4"	10-1/4"			Has 3 feet, 6-3/8" apart, 5/16" high
14-7/8"	30QBP1247	T5	8-3/8"	9-1/2"			Has 6 feet on 13" circle
15"	30QBP0606				11-3/4"	12-1/2"	Light gray ceramic with dark flecks, 1" high
15"	30QBP1616	T5	9-3/4"	11"			
15-1/8"	30QBP0064	T10	9-7/8"	11-7/8"			Has 3 rectangular feet, 11-1/2" apart, 5/16" high
15-3/8"	30QBP0055		8"	9"	10-1/4"	11-3/8"	
15-3/8"	30QBP2375				12-1/2"	14-1/4"	Metal, black with white speckles
15-5/8"	30QBP2198		8-3/8"	9-5/8"			
16"	30QBP0350		8"	9-3/16"		9-3/16"	Has 3 small rectangular feet on ridge
16"	30QBP1000		8-3/4"	9-5/8"			
16"	30QBP4087		8-11/16"	9-5/8"		9-5/8"	Has 3 small rectangular feet on ridge
16-9/16"	30QBP4126	T5	9-3/4"	11"			Has 3 tapered feet, 7-5/8" apart, 5/32" high

## Order No. 30QBP2567

15-3/4" length x 13-1/32" width  
3/4" thick  
Sides slightly curved  
4-5/8" x 5/8" x 3/16" deep slot in  
center of tray bottom



## Order No. 30QBP0041

10-1/2" length x 10-1/2" width

## Order No. 30QBP0048

11-13/16" length x 12-3/4" width

## Order No. 30QBP0264

12-1/16" length x 10-5/8" width

## Order No. 30QBP1457

13-3/8" length x 12-5/8" width

## Order No. 30QBP0604

14-1/2" length x 13-5/8" width (white ceramic)

## Order No. 30QBP0566

15-3/4" length x 15-7/16" width

## Order No. 30QBP4159\*


19-1/8" length x 16-3/8" width

\*Has 4 round feet at 1-1/4" high,  
5/16" center - center  
Also has 4 rectangular feet near edges  
that are 1/4" x 2" and 3/16" high




# MICROWAVE WAVEGUIDES & STIRRER COVERS


**Order No. 40QBP1012** 12" L x 10" W  
**Order No. 40QBP1618** 18" L x 16" W  
 Cut-to-fit  
 Mica construction  
**Universal**




**Order No. 40QBP0573** **Emerson**  
 3-27/32" L x 3-1/4" W  
 Mica construction



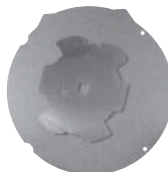
**Order No. 40QBP1399** **Emerson**  
 4-5/8" L x 3-7/8" W  
 Mica construction



**Order No. 29QBP4099** **Emerson**  
 4-3/4" L x 4" W  
 Mica construction



**Order No. 29QBP4093** **Goldstar**  
 8-3/4" diameter  
 Mica construction  
 Includes metal fan disc



**Order No. 40QBP4144** **Goldstar**  
 4-15/32" L x 4-7/8" W  
 Mica construction



**Order No. 40QBP4149** **Goldstar**  
 4-1/4" L x 3-3/4" W  
 Plastic construction



**Order No. 40QBP4200** **Goldstar**  
 5-1/2" L x 4-3/8" W  
 Mica construction



**Order No. 29QBP4095** **Panasonic**  
 13" L x 10-7/8" W  
 Clear frame with  
 white ceiling plate




**Order No. 40QBP1155** **Panasonic**  
 4-9/32" L x 2-11/16" W  
 Mica construction




**Order No. 40QBP4209** **Panasonic**  
 4-9/32" L x 4-9/32" W  
 Mica construction



**Order No. 29QBP0478** **Sharp**  
 4-3/8" L x 2-27/32" W  
 Mica construction



**Order No. 29QBP1951** **Sharp**  
 4-11/16" L x 3-1/16" W  
 Mica construction



**Order No. 29QBP2569** **Sharp**  
 9-5/16" diameter  
 Mica construction with  
 plastic shaft



**Order No. 29QBP3608** **Sharp**  
 4-3/16" L x 2-13/16" W  
 Mica construction

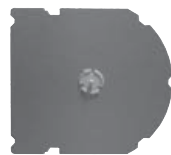


# MICROWAVE WAVEGUIDES & STIRRER COVERS

Order No. 29QBP4085

**Sharp**

7-3/4" L x 7" W  
Mica construction



Order No. 40QBP0461

**Sharp**

4-7/8" L x 4-5/8" W  
Mica construction



Order No. 40QBP0480

**Sharp**

4-11/16" L x 4-3/16" W  
Mica construction



Order No. 40QBP0482

4-9/16" L x 4-1/16" W

Order No. 40QBP0702

4-19/32" L x 4-3/32" W

Order No. 40QBP0720

4-5/8" L x 4-1/8" W

Mica construction

**NEW!**

**Sharp**



Order No. 40QBP0484

**Sharp**

5-1/2" L x 4-5/16" W  
Mica construction



Order No. 40QBP0485

**Sharp**

4-3/8" L x 4-1/16" W  
Mica construction



Order No. 40QBP0715

**Sharp**

4-3/4" L x 4-3/16" W  
Mica construction



Order No. 40QBP0737

**Sharp**

4-3/16" L x 3-27/32" W  
Mica construction



Order No. 40QBP0739

**Sharp**

5-3/32" L x 4-9/32" W  
Mica construction



Order No. 40QBP0743

**Sharp**

6-5/32" L x 4-1/4" W  
Mica construction



Order No. 40QBP1706

**Sharp**

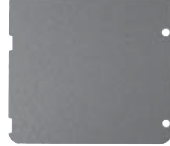
4-5/8" L x 4-1/32" W  
Mica construction



Order No. 40QBP3849

**Sharp**

4-9/16" L x 4-3/32" W  
Mica construction



Order No. 40QBP4189

**Sharp**

5-9/32" L x 5-1/2" W  
Mica construction



Order No. 40QBP4197

**Sharp**

4-23/32" L x 4-7/32" W  
Mica construction



Order No. 40QBP4201

**Sharp**

4-11/16" L x 4-7/32" W  
Mica construction



Order No. 40QBP4203

**Sharp**

8-1/2" L x 8-1/2" W  
Mica construction  
with plastic shaft



# MICROWAVE WAVEGUIDE COVER RETAINER CLIPS

## Order No. 80QBP0896

Pin head: .310" width: .097" length: .275"  
Receptacle dia: .153" Shaft length: .190"  
Qty: 2 expansion pins *Sold in packs of 25*

## Order No. 80QBP0898

Pin head: .315" width: .134" length: .312"  
Receptacle dia: .191" Shaft length: .220"  
Qty: 2 expansion pins

Waveguide cover  
retainer push pins  
**Universal**



## Order No. 80QBP8536

### Waveguide cover retainer push pin

Pin head: .315" width: .073" length: .215"  
Receptacle dia: .139"  
Qty: 1 expansion pin

**Universal**



## Order No. 80QBP0723

### Waveguide cover retainer canoe clip

Pin head: .281"  
Width: .155"  
Length: .365"

**Universal**



## Order No. 80QBP0761

### Waveguide cover retainer canoe clip

Pin head: .308"  
Width: .140"  
Length: .330"

**Universal**



## Order No. 80QBP0894

### Waveguide cover retainer canoe clip

Pin head: .278"  
Width: .141"  
Length: .325"

*Sold in packs of 25*

**Universal**



## Order No. 80QBP0895

### Waveguide cover retainer canoe clip

Pin head: .420"  
Width: .236"  
Length: .590"

*Sold in packs of 100*

**Universal**



# MICROWAVE MISCELLANEOUS

## Order No. 4750

### Magic Lights Microwave Tester

- Checks microwave power settings
- Finds hot and cold spots
- No batteries needed



## Order No. MLM240

### Microwave Radiation Detector

- Checks radiation levels
- Simple and cost efficient warning device
- No batteries required
- 2"L x 1-3/8"W x 3/4"H
- Gauge with "Safety" and "Danger" zones, display immediate results



## Order No. CDMICRO Order No. DVDMICRO

### Microwave Repair CD

- Nearly 400 pages of fully searchable text & illustrations
- Over 20 minutes of hands-on video clips
- Factory troubleshooting charts, errors & service codes, formulas, schematics & diagnostic procedures
- Touch panel (keypad) matrix diagrams for 100s of brands

*Repairing a microwave oven is a dangerous task. The high-voltage potential combined with the high-current capability of an operating microwave oven pose a deadly threat to a careless worker. Therefore, for your personal safety, we respectfully ask that you read and understand these very important safety precautions before attempting any repairs.*

### Microwave Repair DVD "You Can Fix Microwave Ovens!"

- Newly remastered and completely updated
- Designed for appliance, electronic techs, students, amateurs & do-it-yourselfers
- Complete, in-depth, step-by-step instructional video on operation, maintenance & repair with emphasis on safety

