


Replacing the lamp

The Projection lamp, like all lamps, will eventually lose brightness and functionality which affects the overall performance of your TV. How long the Lamp maintains its brightness will vary depending upon your usage and environmental conditions. To maintain the quality of your viewing experience, Sony recommends that you replace the Lamp (1) when the screen becomes dark or the color looks unusual; (2) when  on the front of the TV flashes; (3) after approximately 8,000 hours of use (for KS-60R200A/50R200A) or 4,000 hours of use (for KS-70R200A); or (4) when the lamp replacement message appears on the TV screen.

WARNING

Electric appliances can cause fire or high temperature, resulting in injury or death. Be sure to follow the instructions below.

- Use a Sony XL-5100 replacement lamp (for KS-60R200A/50R200A, not supplied) or XL-5300 replacement lamp (for KS-70R200A, supplied) for replacement. Use of any other lamp may damage the TV.
- Do not remove the lamp for any purpose other than replacement. Doing so may cause injury or fire.
- Do not put flammable materials and metal objects inside the lamp receptacle of the TV after removing the lamp. Doing so may cause fire or electrical shock. Do not touch the lamp receptacle once the lamp has been removed.
- When the lamp eventually burns out, you may hear a noticeable “pop” sound. This is normal and it is inherent to this type of lamp.
- In rare instances, the bulb may pop inside the lamp unit, but the lamp unit is designed to contain all of the broken glass pieces inside the lamp unit.
- This TV’s lamp contains mercury and should be disposed of properly. Consult your local authorities regarding safe disposal. The material contained in this lamp are similar to those of a fluorescent lamp, so you should dispose of it in the same way.

- 1 Switch off the TV. Wait several minutes, then unplug the power cord.
(The cooling fan will continue to operate for about two minutes after switching the TV off.)
- 2 Wait at least 30 minutes after unplugging the power cord to allow the lamp to cool down before replacing it. To avoid being burned, do not touch the lamp receptacle once the lamp has been removed.

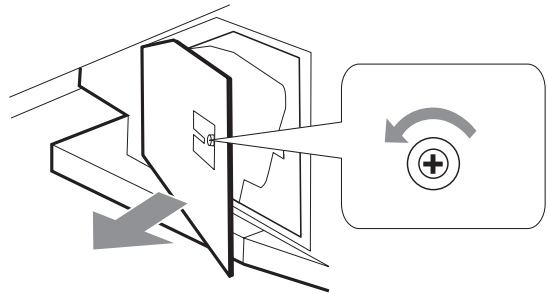
- 3 Take the new lamp out of its package. Do not touch the glass portion of the new lamp.

Notes

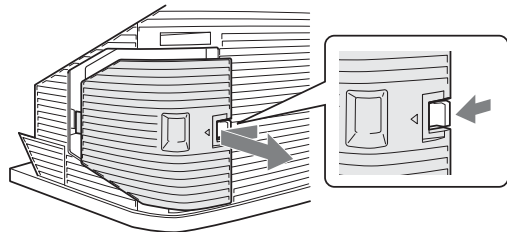
- Do not shake the lamp. Vibration can damage the lamp or shorten its life.
- Avoid touching the front glass of a new lamp or the glass of the lamp receptacle. This may reduce picture quality or lamp life.

- 4 Remove the outside lamp cover.
For KS-60R200A/50R200A, turn the screw with a screwdriver counterclockwise and remove the cover.
For KS-70R200A, release the clamp and remove the cover.

KS-60R200A/50R200A

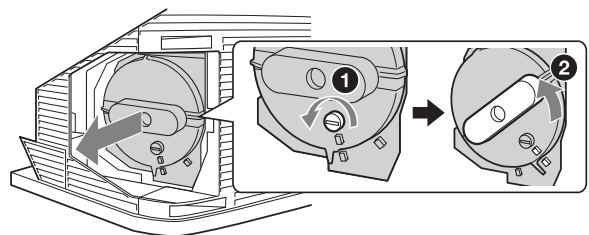


KS-70R200A



- 5 Remove the lamp door. (For KS-70R200A) Turn the screw counterclockwise, and then turn the knob to the left until the marks on the lid and the case line up. Remove the door.

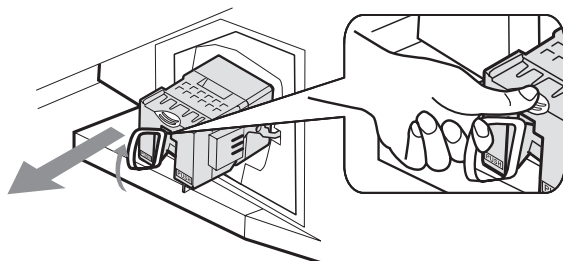
KS-70R200A



Continued

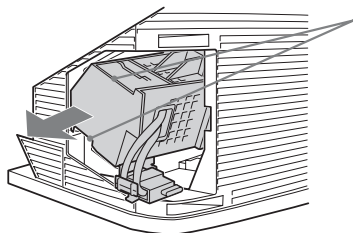
- 6** Pull out the lamp.
 For KS-60R200A/50R200A, place your index finger through the hoop of the lamp handle and pull it upwards, while placing your thumb on the dent on the top. Then pull the lamp out.
 For KS-70R200A, hold the indents on the top and bottom of the lamp, and pull the lamp straight out.

KS-60R200A/50R200A



KS-70R200A

Hold this part of the lamp



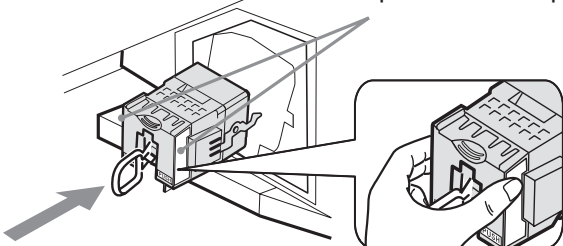
Notes

- The lamp is very hot after use. Never touch the glass portion of the lamp or the non-designated surrounding parts.
- After the used lamp has cooled, place it into the empty box of the replacement lamp. Never put the used lamp into a plastic bag.

- 7** Place the new lamp halfway in. (For KS-60R200A/50R200A)
 Follow the gutter in the housing to mount the new lamp securely.

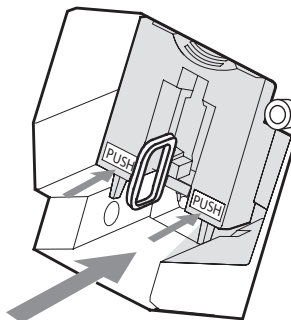
KS-60R200A/50R200A

Hold this part of the lamp

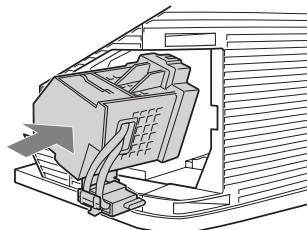


- 8** Put the new lamp into its place.
 For KS-60R200A/50R200A, slide it in slowly by pressing the PUSH part of the front corners of the lamp until it stops with a firm clicking sound to lock.
 For KS-70R200A, make sure the lamp is securely mounted into the compartment.


KS-60R200A/50R200A



KS-70R200A

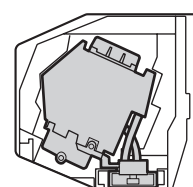
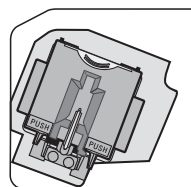


Notes

- The lamp compartment is tilted.
- To ensure the lamp is securely installed, press the area marked PUSH before closing the lamp cover.
- If the lamp is not securely reattached, the self-diagnostic function may be triggered and  flashes in red three times (page 14).

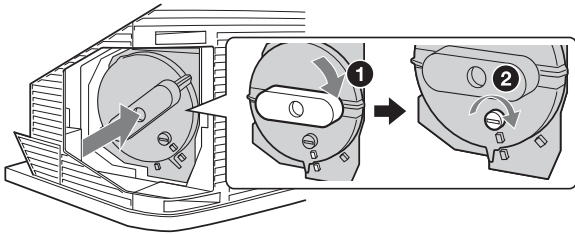
KS-60R200A/50R200A

KS-70R200A



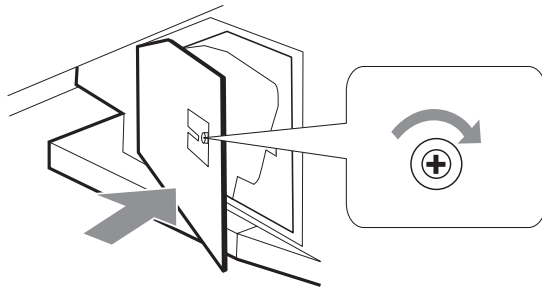
- 9** Reattach the lamp door. (For KS-70R200A)
Turn the knob to the right while pushing the door in, until the marks on the lid and the case line up. Then turn the screw clockwise to secure the door.

KS-70R200A

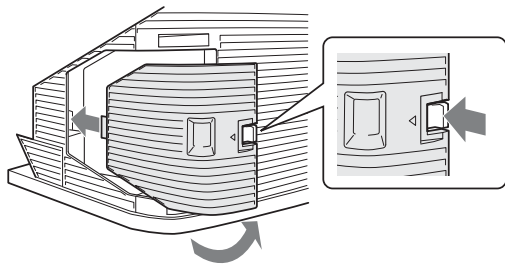


- 10** Place the outside lamp cover back in its place.
For KS-60R200A/50R200A, turn the screw with a screwdriver clockwise and secure the cover.
For KS-70R200A, replace the cover, inserting it from the left side. Press the clamp on the right side to secure the cover.

KS-60R200A/50R200A



KS-70R200A



- 11** Turn on the TV and set the Lamp Replacement option in the Setup menu (page 29). This setting is necessary to inform you when the next lamp replacement is needed.

Notes

- Until you set the Lamp Replacement option, a message announcing that the lamp is at the end of its life will appear every time you switch on the TV.
- Consult your Sony dealer for a Sony XL-5100 replacement lamp (for KS-60R200A/50R200A) or XL-5300 replacement lamp (for KS-70R200A).
- Take great care when replacing the lamp or plugging in/unplugging the connecting cords. Rough handling may cause the TV to fall, damaging the TV, the TV stand and the floor.