

Chip Removal instructions Canon PGI-520 | PGI-220 | CLI-521 | CLI-221

e.g. InkSwiss SIC520B | SIC521PB | SIC522C | SIC523M | SIC524Y

Please Note:

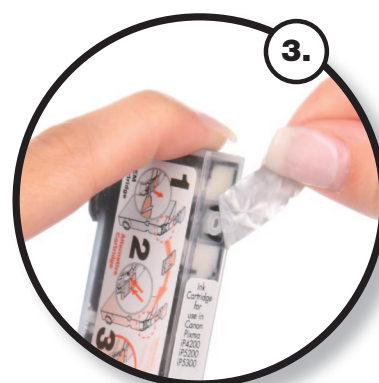
1. This compatible ink cartridge is delivered without a chip. The chip from the empty original ink cartridge needs to be attached to the compatible ink cartridge.
2. Change the ink cartridge only when the printer displays the ink cartridge is empty message.
3. Before attaching the chip to the compatible ink cartridge, please ensure that you have the correct chip from the original ink cartridge.
4. Should you need to attach more than one ink cartridge chip, change each one separately in order to avoid attaching the wrong chip to the wrong ink cartridge.
5. Take care not to damage the chips when changing them.
6. Do not apply pressure to the sides of open ink cartridges, as this could cause the ink to leak out.
7. We accept no responsibility for any damage caused by inadequate or incorrect actions carried out during the chip transfer process. The chip transfer process is carried out at your own risk.



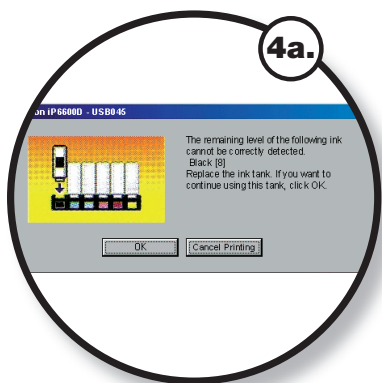
Remove the original ink cartridge from the printer. The chip is attached by 2 plastic pins, whose ends are flattened. Carefully cut off the ends with a sharp knife and remove the chip.



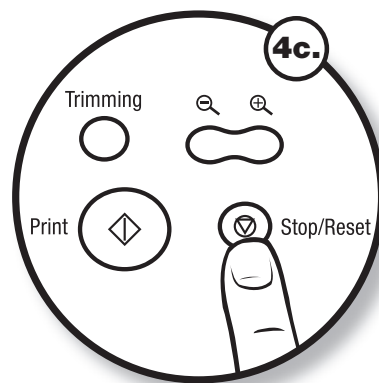
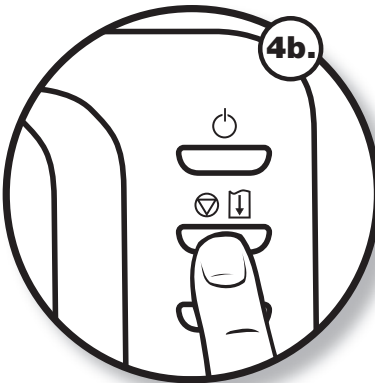
Attach the chip to the compatible ink cartridge, by positioning the holes of the chip over the compatible ink cartridge's 2 plastic pins and pushing into place.



Remove the yellow security strips from the ink cartridge and insert the ink cartridge into the printer.



If after installing your ink cartridge your printer/computer displays an incorrect ink fluid level or the ink fluid level is too low, carry out the following actions: Canon iP3600/iP4600 - press the button (Continue) for 5 seconds, Canon MP540/MP620 - press the button (Stop/Reset) for 5 seconds. The ink fluid level monitor will then be deactivated and the printer will now be able to print. Should an MP printer not respond, please then press the "OK" button.



Additional Information: Please manually check the ink fluid level of the ink cartridges from time to time. If the fluid is too low or print quality is noticeably unsatisfactory, please install a new ink cartridge. Otherwise, the print head could become damaged.

If an ink cartridge cannot be recognised by the printer, please ensure that the chip is correctly positioned on the ink cartridge in order to allow a good contact between the chip and print head sensor.

If necessary, remove dirt using a fluff free cloth and make sure that the ink cartridge is correctly seated. Check the serviceability of the chip by reattaching it to the original ink cartridge. A faulty chip must be replaced.

The chip can be reset to show a full ink fluid level by using a chip reset device.