



classics >

Easy Reader® >

- **INDIGLO®** night-light
- Genuine leather straps
- 3 year battery life* (women's styles)
- 10 year battery life* (men's styles)
- Water-resistant 30m



T20433
0-48148-20433-1
▪ Black leather strap



T20491
0-48148-20491-1
▪ Black leather strap



T20441
0-48148-20441-6
▪ Black smooth grain leather strap



T20501
0-48148-20501-7
▪ Black smooth grain leather strap



- **INDIGLO®** night-light
- Adjustable stainless steel expansion band
- 3 year battery life* (women's styles)
- 10 year battery life* (men's styles)
- Water-resistant 30m



T20423
0-48148-20423-2
▪ Gold-tone expansion band



T20481
0-48148-20481-2
▪ Gold-tone expansion band

< The Timex® fashion line includes timeless classics, a dressy collection, and the trendy TMX® styles—just right for any lifestyle.

All styles are covered by U.S. Patent No. 4,775,964. *Battery life estimates are based on certain assumptions regarding usage; battery life may vary depending on actual usage. See back inside cover for trademark ownership and registration information.

classics >

Easy Reader® >

- **INDIGLO®** night-light
- Genuine leather straps
- QUICK-DATE® feature (where indicated)
- 3 year battery life* (women's styles)
- 10 year battery life* (men's styles)
- Water-resistant 30m



T20071
0-48148-20071-5
▪ Brown croco-grain leather strap
▪ QUICK-DATE® feature



T20101
0-48148-20101-9
▪ Black croco grain leather strap



T20412
0-48148-20412-6
▪ White smooth grain leather strap



T20061
0-48148-20061-6
▪ Silver-tone expansion band



T20081
0-48148-20081-4
▪ Gold-tone expansion band
▪ QUICK-DATE® feature



T20451
0-48148-20451-5
▪ Bi-metal expansion band

- **INDIGLO®** night-light
- Adjustable stainless steel expansion bands
- QUICK-DATE® feature (where indicated)
- 3 year battery life* (women's styles)
- 10 year battery life* (men's styles)
- Water-resistant 30m



T20011
0-48148-20011-1
▪ Brown leather strap
▪ QUICK-DATE® feature



T20051
0-48148-20051-7
▪ Black croco leather strap
▪ QUICK-DATE® feature



T20041
0-48148-20041-8
▪ Brown leather strap
▪ QUICK-DATE® feature



T20021
0-48148-20021-0
▪ Gold-tone expansion band



T20471
0-48148-20471-3
▪ Gold-tone expansion band
▪ QUICK-DATE® feature



T23811
0-48148-23811-4
▪ Bi-metal expansion band



Look for **INDIGLO®** night-light on the face of TIMEX watches...another simply brilliant innovation from Timex! The INDIGLO® night-light uniformly lights up the dial at the push of a button.

The QUICK-DATE® feature allows the user to set the date on the watch directly when the crown stem is halfway out. No more turning watch hands to reset the date!



T20001
0-48148-20001-2
▪ Silver-tone expansion band



T20031
0-48148-20031-9
▪ Silver-tone expansion band
▪ QUICK-DATE® feature



T20461
0-48148-20461-4
▪ Silver-tone expansion band
▪ QUICK-DATE® feature

All styles on pages 4 and 5 are covered by U.S. Patent No. 4,775,964. *Battery life estimates are based on certain assumptions regarding usage; battery life may vary depending on actual usage. See back inside cover for trademark ownership and registration information.

classics >

- **INDIGLO®** night-light
- Genuine leather straps (T28612, T28622)
- Metal bracelets
- Luminescent hands
- QUICK-DATE® feature (except T15367)
- 10 year battery life* (T28612, T28622, T28812, T15367, T21582, T21573)
- 2.5 year battery life* (T21462 only)
- Water-resistant 50m (except T15367 30m)



>new> **T28612**
7-53048-04847-2
▪ Black leather strap with contrast stitching and silver-tone buckle



>new> **T28622**
7-53048-04848-9
▪ Brown leather strap with contrast stitching and silver-tone buckle



>new> **T28812**
7-53048-04850-2
▪ Silver-tone metal band with deployment buckle

- **INDIGLO®** night-light
- Stainless steel expansion bands
- Chrono/alarm/timer
- Month/day/date
- 4 year battery life
- Water-resistant 30m



T78587
0-48148-78587-8
▪ Silver-tone expansion band



T78677
0-48148-78677-6
▪ Gold-tone expansion band



T75961
0-48148-75961-9
▪ Black resin strap

fashion >

6



T15367
0-48148-15367-7
▪ Metal bracelet with foldover clasp



T21582
0-48148-21582-5
▪ Solid stainless steel metal band with deployment buckle



T21573
0-48148-21573-3
▪ Solid stainless steel metal band with deployment buckle



T21462
0-48148-21462-0
▪ Solid stainless steel metal bracelet with deployment buckle

- **INDIGLO®** night-light
- Stainless steel expansion band
- Month/day/date
- Chrono/alarm/timer
- 3 year battery life
- Water-resistant 30m



>new> **T28402**
7-53048-04858-8
▪ Gold-tone expansion band



>new> **T28412**
7-53048-04859-5
▪ Bi-metal expansion band

7

- **INDIGLO®** night-light
- Genuine leather straps with Teflon® fabric protectant on fabric lining
- Luminescent hands
- QUICK-DATE® feature
- 10 year battery life* (T21553)
- 2.5 year battery life* (T21472, T21534)
- Water-resistant 50m



T21472
0-48148-21472-9
▪ Black leather strap with contrast stitching and gingham fabric lining



T21534
0-48148-21534-4
▪ Brown leather strap with contrast stitching and gingham fabric lining



T21553
0-48148-21553-5
▪ Brown leather strap with contrast stitching and plaid fabric lining



- Nylon grosgrain strap
- Luminescent hands (T41711) and luminescent hands and markers (T18581)
- 10 year battery life
- Water-resistant 30m



T18581
7-53048-96424-6
▪ Black grosgrain nylon strap



T41711
0-48148-30317-1
▪ Olive green grosgrain nylon strap

Teflon is a registered trademark of Du Pont De Nemours and Company. Only DuPont makes Teflon®. All styles on pages 6 and 7 are covered by one or more of the following: U.S. Patent Nos. 4,775,964; and 4,527,096.
*Battery life estimates are based on certain assumptions regarding usage; battery life may vary depending on actual usage. See back inside cover for trademark ownership and registration information.

classics >

- **INDIGLO®** night-light
- Adjustable stainless steel bracelet with deployment buckle
- QUICK-DATE® feature
- Luminescent hands
- 10 year battery life*
- Water-resistant 30m



T29012
0-48148-29012-9
▪ Matte and gloss silver-tone metal band



T23231
0-48148-23231-0
▪ Bi-metal metal band

- **INDIGLO®** night-light
- Stainless steel expansion bands or genuine leather straps
- Date or QUICK-DATE® feature (where indicated)
- 10 year battery life*
- Water-resistant 30m



T21942
0-48148-21942-7
▪ QUICK-DATE® feature
▪ Gold-tone expansion band



T21962
0-48148-21962-5
▪ QUICK-DATE® feature
▪ Silver-tone expansion band

- **INDIGLO®** night-light
- Adjustable stainless steel bracelets with deployment buckle
- QUICK-DATE® feature
- Easy Reader® date (styles T23161, T23191 only)
- 3 year battery life (women's styles)
- 10 year battery life (men's styles)
- Water-resistant 30m



T23161
0-48148-23161-0
▪ Mother of pearl dial
▪ Easy Reader® date
▪ Gold-tone metal bracelet



T23191
0-48148-23191-7
▪ Swarovski® crystals on bezel ring
▪ Easy Reader® date
▪ Bi-metal bracelet



T21713
0-48148-21713-3
▪ QUICK-DATE® feature
▪ Dark brown croco-grain leather strap



T21734
0-48148-21734-0
▪ Tan croco-grain leather strap



T21752
0-48148-21752-2
▪ QUICK-DATE® feature
▪ Black croco-grain leather strap



T32157
0-48148-32157-1
▪ Date
▪ Bi-metal bracelet



T32227
0-48148-32227-1
▪ Date
▪ Gold-tone metal bracelet



T32747
0-48148-92740-7
▪ QUICK-DATE® feature
▪ Bi-metal band



T32827
0-48148-32827-3
▪ QUICK-DATE® feature
▪ Gold-tone band



T28482
7-53048-04831-1
▪ QUICK-DATE® feature
▪ Black leather strap with gold-tone buckle

Look for **INDIGLO®** night-light on the face of TIMEX watches...another simply brilliant innovation from Timex! The INDIGLO® night-light uniformly lights up the dial at the push of a button.

classics >

- **INDIGLO®** night-light
- Leather straps
- Date (where indicated)
- 3 year battery life*
- 2.5 year battery life* (T16091 only)
- Water-resistant 30m



T23241
0-48148-23241-9
▪ Brown croco grain leather strap



T23251
0-48148-23251-8
▪ Black leather strap



T19311
0-48148-19311-6
▪ Mother of pearl dial
▪ Black leather strap



T16091
0-48148-16091-0
▪ Date
▪ Brown leather strap

Cavatina® >

- Adjustable stainless steel expansion band or genuine leather strap
- 3 year battery life*



T21912
0-48148-21912-0
▪ Black leather strap



T21872
0-48148-21872-7
▪ Gold-tone expansion band



T21902
0-48148-21902-1
▪ Silver-tone expansion band



T21882
0-48148-21882-6
▪ Gold-tone expansion band



T21864
0-48148-21864-2
▪ Bi-metal expansion band

- Genuine leather straps
- 3 year battery life



T19871
0-48148-19871-5
▪ Brown croco grain leather strap



T19681
0-48148-19681-0
▪ Brown croco grain leather strap

- Adjustable stainless steel expansion bands
- 3 year battery life*



T21922
0-48148-21922-9
▪ Swarovski® crystals
▪ Mother of pearl dial
▪ Silver-tone expansion band



T21932
0-48148-21932-8
▪ Swarovski® crystals
▪ Gold-tone expansion band



T00917
0-48148-30234-1
▪ Silver-tone expansion band



T01017
0-48148-30235-8
▪ Gold-tone expansion band

- **INDIGLO®** night-light
- Leather straps
- Date or QUICK-DATE® feature (where indicated)
- 3 year battery life*
- Water-resistant 30m



T21683
0-48148-21683-9
▪ Rose gold tone case and buckle
▪ QUICK-DATE® feature
▪ Black leather strap



T21693
0-48148-21693-8
▪ Mother of pearl dial
▪ QUICK-DATE® feature
▪ Burgundy croco grain leather strap



T21703
0-48148-21703-4
▪ QUICK-DATE® feature
▪ White croco grain leather strap



T21672
0-48148-21672-3
▪ Mother of pearl dial
▪ QUICK-DATE® feature
▪ Ivory tone croco grain leather strap



T16132
0-48148-16132-0
▪ Date
▪ Brown leather strap

- Adjustable stainless steel expansion bands
- 3 year battery life*
- Water-resistant 30m



T53822
0-48148-53822-1
▪ Bi-metal expansion band



T21832
0-48148-21832-1
▪ Swarovski® crystals on dial
▪ Gold-tone expansion band



T21854
0-48148-21854-3
▪ Bi-metal expansion band



collection >

- Bracelets include easy to use self-adjustable links
- 3 year battery life*



>new> **T19582**
7-53048-02089-8
▪ Gold-tone metal bracelet



>new> **T19802**
7-53048-02102-4
▪ Bi-metal bracelet

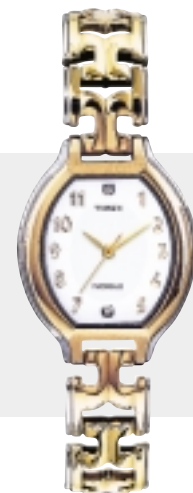


>new> **T22832**
048148-22832-0
▪ Bi-metal bracelet



>new> **T22742**
048148-22742-2
▪ Gold-tone metal bracelet

- 2 GENUINE DIAMONDS at "6" and "12" hour markers (T28432 only)
- **INDIGLO®** night-light
- Bracelets include easy to use self-adjustable links
- 3 year battery life*
- Water-resistant 30m (T28312)



>new> **T28432**
7-53048-04827-4
▪ 2 GENUINE DIAMONDS on dial
▪ Bi-metal bracelet



>new> **T28372**
7-53048-04825-0
▪ QUICK-DATE® feature with Easy Reader® date
▪ Bi-metal bracelet

< With its detailing and design, Timex® fashion watches prove that dress watches do not have to be expensive.

*Battery life estimates are based on certain assumptions regarding usage; battery life may vary depending on actual usage. See back inside cover for trademark ownership and registration information.



collection >

- Bracelets include easy-to-use self-adjustable links
- 3 year battery life*



T19822
0-48148-19822-7
▪ Mother of pearl dial
▪ Gold-tone metal bracelet



T19831
0-48148-19831-9
▪ Bi-metal bracelet



T19861
0-48148-19861-6
▪ Bi-metal bracelet

- Styles feature genuine Swarovski® crystals (T29441 only)
- Bracelets include easy-to-use self-adjustable links
- 2.5 year battery life*



T29441
0-48148-29441-7
▪ Swarovski® crystals on silver-tone case



T28752
7-53048-04861-8
▪ Gold tone metal bracelet



T28762
7-53048-04862-5
▪ Bi-metal bracelet



T28772
7-53048-04863-2
▪ Black leather strap

fashion >

14



T22881
048148-22881-8
▪ Silver-tone metal bracelet



T22891
048148-22891-7
▪ Gold-tone metal bracelet



T23182
048148-23182-5
▪ Silver-tone metal bracelet



T22991
048148-22991-4
▪ Gold-tone metal bracelet

- Bracelets include easy-to-use self-adjustable links
- 3 year battery life*
- Water-resistant 30m



T22932
0-48148-22932-7
▪ Silver-tone metal bracelet



T22942
0-48148-22942-6
▪ Gold tone metal bracelet



T22952
0-48148-22952-5
▪ Bi-metal bracelet

15



T19361
048148-19361-1
▪ Faceted crystal
▪ Bi-metal bracelet



T19371
048148-19371-0
▪ White mother of pearl dial
▪ Bi-metal bracelet



T19391
048148-19391-8
▪ Blue mother of pearl dial
▪ Silver-tone metal bracelet

- Bracelets include easy-to-use self-adjustable links
- 3 year battery life*
- Water-resistant 30m



T28672
7-53048-04834-2
▪ Bi-metal bracelet



T28692
7-53048-04836-6
▪ Swarovski® crystals at "12" hour markers

collection >

easy set alarm >

- All styles include the easy set alarm feature
- Adjustable stainless steel metal bracelets with deployment buckles or genuine leather bands
- **INDIGLO®** night-light
- QUICK-DATE® feature
- 2 years battery life* (women's styles)
- 7.5 years battery life* (men's styles)
- Water-resistant 30m (women's styles)
- Water-resistant 50m (men's styles)



T23001
0-48148-23001-9
▪ Solid stainless steel metal bracelet with deployment buckle



T23011
0-48148-23011-8
▪ Solid stainless steel metal bracelet with deployment buckle



T23031
0-48148-23031-6
▪ Brown braided leather strap

chronograph with **INDIGLO®** night-light >

- Chronograph function measures seconds, minutes and hours
- **INDIGLO®** night-light illuminates entire face
- NIGHT-MODE® feature
- QUICK-DATE® feature
- Stainless steel cases
- Adjustable stainless steel bracelets with deployment buckle
- Luminescent hands (T20523, T20511, T20582, T21442, T21452, T20532 only)
- Genuine leather straps
- 4.5 years battery life
- Water-resistant 50m



T20523
0-48148-20523-9
▪ Mother of pearl dial
▪ Swarovski® crystals
▪ Gold-tone stainless steel metal bracelet with deployment buckle



T20511
0-48148-20511-6
▪ Mother of pearl dial
▪ Swarovski® crystals
▪ Silver-tone metal bracelet with deployment buckle



T20582
0-48148-20582-6
▪ Bi-metal stainless steel metal bracelet with deployment buckle

fashion >

16



T19404
0-48148-19404-5
▪ Black leather strap



T19281
0-48148-19281-2
▪ Metal bracelet with deployment buckle



T19291
0-48148-19291-1
▪ Bi-metal bracelet with deployment buckle



Turn the ring to the desired time.



To set, pull out the crown once for over an hour, twice for under an hour.



When the alarm sounds, the Indiglo® night-light flashes.



T21442
0-48148-21442-2
▪ Silver tone metal bracelet with deployment buckle



With a push of the button, Indiglo® night illuminates the entire face—an industry first!



T21452
0-48148-21452-1
▪ Mother of pearl dial
▪ Swarovski® crystals on dial
▪ Black croco grain leather strap



T20532
0-48148-20532-1
▪ Mother of pearl dial
▪ Swarovski® crystals on dial
▪ Pastel blue croco grain leather strap

17



T28532
7-53048-04840-3
▪ Black leather strap



T28562
7-53048-04843-4
▪ Brown leather strap



T21782
0-48148-21782-9
▪ Silver-tone stainless steel metal bracelet with deployment buckle

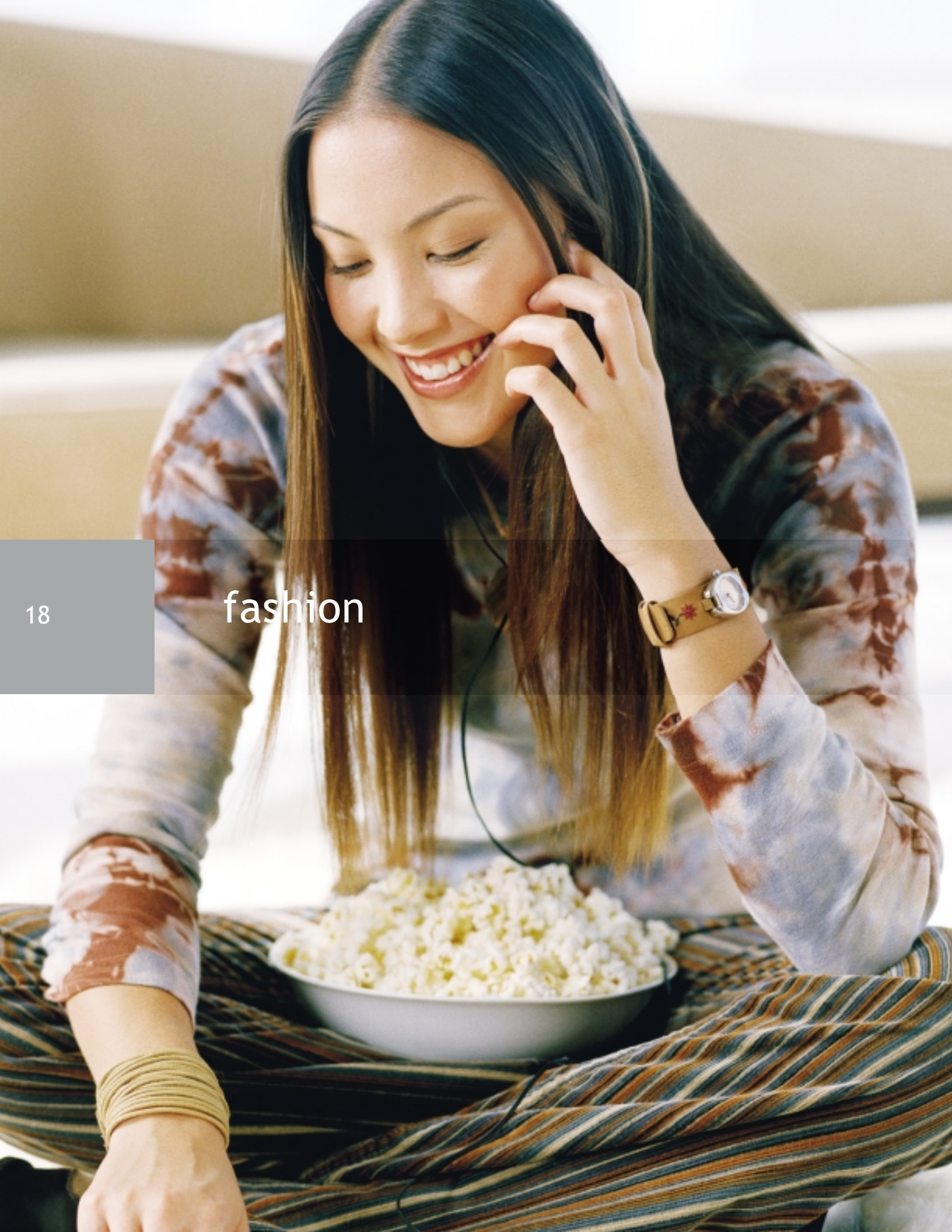


T21813
0-48148-21813-0
▪ Brown croco grain leather strap



T21823
0-48148-21823-9
▪ Black croco grain leather strap

< Chronographs with **INDIGLO®** night-light are another industry first offered by Timex.



TMX® >

fashion leather >

- Metallic dials
- 3 year battery life*
- Water-resistant 30m



>new>
T71431
7-53048-02539-8
■ Denim strap with
stitched flowers



>new>
T71441
7-53048-02541-1
■ Brown leather strap with
embossed floral design



>new>
T71451
7-53048-02544-2
■ Tan suede strap with
stitched flowers

TIMEX
TMX



>new>
T71371
7-53048-02526-8
■ Denim strap with
stitched flowers



>new>
T71381
7-53048-0529-9
■ Brown leather strap with
embossed floral design



>new>
T71391
7-53048-02530-5
■ Beige leather strap
with stitched flowers



>new>
T71401
7-53048-02533-6
■ Black leather strap
with embossed pattern

< Inspired by today's active and youthful consumer, TMX® watches are the perfect combination of fashion and style.

TMX® >

stainless steel
insert style >

- Gradated metallic dials
- Stainless steel and resin case
- 10 year battery life*
- Water-resistant 100m



>new> **T74152**
0-48148-74152-2
▪ Plum translucent resin strap
▪ High gloss bezel



T73071
0-48148-73071-7
▪ Ice blue translucent resin strap
▪ Iridescent high gloss bezel



T73091
0-48148-73091-5
▪ Black translucent resin strap
▪ Metallic high gloss bezel

metal >

- Metallic dials
- Self-adjustable links
- 3 year battery life*



T71641
7-53048-02581-7
▪ Brushed finish



T71651
7-53048-02583-1
▪ Polished finish



T71661
7-53048-02585-5
▪ Polished finish

fashion

TIMEX
TMX

hidden image style >

- Gradated metallic dials with hidden image when **INDIGLO®** night-light is activated
- Black resin straps
- 2.5 years battery life*
- Water-resistant 100m



>new> **T73671**
0-48148-73671-9



>new> **T73681**
0-48148-73681-8



>new> **T73691**
0-48148-73691-7



>new> **T73702**
0-48148-73702-0



T71601
7-53048-02573-2
▪ Polished finish



T71612
7-53048-02575-6
▪ Polished finish



T72281
7-53048-02626-5
▪ Brushed finish

integrated bracelet >

- Metallic dials
- Chrome case and bracelet
- Self-adjustable bracelets with removable links
- 3 year battery life*
- Water-resistant 30m



T73121
0-48148-73121-9
▪ Brushed and polished finish



T73171
0-48148-73212-4
▪ Brushed and polished finish



T73212
0-48148-73261-2
▪ Brushed and polished finish



T73261
0-48148-73261-2
▪ Brushed and polished finish

Styles T74152, T73071, and T73091 are covered by U.S. Patent No. D413,525. Styles T71612, and T71601 are covered by U.S. Patent No. D449,997.*Battery life estimates are based on certain assumptions regarding usage: battery life may vary depending on actual usage. See back inside cover for trademark ownership and registration information.