

HOT TOOLS®



2012
PROFESSIONAL SALON
STYLING APPLIANCES CATALOG
2012

HOT TOOLS® FLATTEN HAIR - IT'S WHAT WE DO



HEATING TECHNOLOGIES

STYLING & HOUSING SURFACES

FLAT IRONS

HEATS - UP TO

HOT TOOLS PROFESSIONAL	HOT TOOLS CERAMIC TOURMALINE	HOT TOOLS NANO CERAMIC	HOT TOOLS PINK TITANIUM	HOT TOOLS BLUE ICE TITANIUM	HOT TOOLS KERATIN IRON
Hot Tools™	CeramicTi™ Tourmaline	Nano Ceramic®	Pink Titanium™	Blue Ice TitaniumTi	Nano Ceramic®
430°	430°	430° & 450°	450°	450°	450°

Pulse Technology® – Every Hot Tools iron Gets Hot...Stays Hot® due to electronic heating systems and powerful heating capacity. The system quickly diagnoses heat loss and restores it to the heating surface, reducing styling time, increasing hold and improving shine due to improved cuticle closure.	●	●	●	●	●
Nano Ceramic® Technology is engineered to emit far infrared heat to seal the cuticle and eliminate frizz, leaving hair soft and shiny. This surface allows hair to glide effortlessly across the plates.			●		●
Ceramic's far-infrared heat goes through the cuticle directly to the cortex. The cuticle is not overheated, shine is increased, and moisture is preserved.		●	●		●
Tourmaline's negative ions help lock-in moisture for enhanced hydration and reduced frizz.		●			
Titanium provides excellent durability under high heat, has excellent corrosion resistance to styling products, and a super-hard smooth surface for snag-free styling and even heat distribution. In its unalloyed condition, titanium is as strong as some steels, but 45% lighter.		●	●	●	●
Floating Plates – adjust to eliminate gaps between plates for better hair contact. (Not on all items within each product line)	●	●	●	●	●
Ceramic Heater – for fast heat-up and instant heat recovery. (Not on all items within each product line)	●		●	●	●



HEATING TECHNOLOGIES
STYLING & HOUSING SURFACES



STYLING IRONS

Pulse Technology® – Every Hot Tools iron Gets Hot...Stays Hot® due to electronic heating systems and powerful heating capacity. The system quickly diagnoses heat loss and restores it to the heating surface, reducing styling time, increasing hold and improving shine due to improved cuticle closure.

Nano Ceramic® Technology is engineered to emit far infrared heat to seal the cuticle and eliminate frizz, leaving hair soft and shiny. This surface allows hair to glide effortlessly across the barrel.

Ceramic's far-infrared heat goes through the cuticle directly to the cortex. The cuticle is not overheated, shine is increased, and moisture is preserved.

Tourmaline's negative ions help lock-in moisture for enhanced hydration and reduced frizz.

Titanium provides excellent durability under high heat, has excellent corrosion resistance, and a super-hard smooth surface for snag-free styling and even heat distribution. In its unalloyed condition, titanium is as strong as some steels, but 45% lighter.

Specialty Irons – for a different look everyday.

	HOT TOOLS PROFESSIONAL	HOT TOOLS CERAMIC TOURMALINE	HOT TOOLS NANO CERAMIC	HOT TOOLS PINK TITANIUM	HOT TOOLS BLUE ICE TITANIUM
	Hot Tools®	CeramicTi™ Tourmaline	Nano Ceramic®	Pink Titanium™	Blue Ice TitaniumTi
	●	●	●	●	●
			●		
		●	●		
		●			
		●	●	●	●
	●	●	●	●	●

HOT TOOLS® DRIES HAIR - IT'S WHAT WE DO



DRYING & HOUSING TECHNOLOGIES

DRYERS AND HOT AIR BRUSHES

Direct ION TECHNOLOGY® (Active ion-generating-system) – Components inside each ionic dryer artificially generates millions of negative ions. They reduce drying time by up to 50% and help reduce static, seal the cuticle, and make hair shiny and soft. Airflow combined with ions dries hair faster.

Tourmaline with Pro-Moisture System™ (Passive ion-generating system) – Tourmaline-generated negative ions provide additional moisture-retention capabilities. Combined with the active ion generators massive ion output, they minimize drying time and maximize Hot Tools dryers' beneficial effects on hair.

Hot Tools® PROFESSIONAL	Hot Tools® PROFESSIONAL IONIC	Hot Tools® CERAMIC-TI TOURMALINE	Hot Tools® NANO-CERAMIC	Hot Tools® PINK TITANIUM	Hot Tools® BLUE ICE TI
Hot Tools®	Hot Tools® IONIC®	CeramicTi™ Tourmaline	Nano Ceramic®	Pink Titanium™	Blue Ice TitaniumTi
●	●	●	●	●	●
		● Including Tourmaline Tools™			



DRIES HAIR UP TO **40% FASTER** THAN NON-IONIC DRYERS



HPK04

**MODEL HPK04
JET DRY TURBO IONIC® DRYER**

- Energy efficient without compromising heat or airflow • Multiple heat / speed combinations
- Cool shot • Includes concentrator and finger diffuser • 8 ft. professional cord
- One-year warranty



HPK11

**MODEL HPK11
1" DIGITAL FLAT IRON – TITANIUM PLATES – HEATS UP TO 450°F**

- Korean designed and engineered • Ceramic heater for fast heat-up and instant heat recovery
- Moveable plates for better hair contact • Digital temperature readout
- Rheostat heat control dial • Heat lock feature • Auto shut-off
- Rounded plate edges • 8 ft. professional swivel cord • One-year warranty



HPK12

**MODEL HPK12
1" FLAT IRON – TITANIUM PLATES – HEATS UP TO 450°F**

- Korean designed and engineered • Ceramic heater for fast heat-up and instant heat recovery
- Moveable plates for better hair contact • Rheostat heat control dial • Separate On / Off switch
- Rounded plate edges • 8 ft. professional swivel cord • One-year warranty



HPK1175

**MODEL HPK1175
THREE BARREL WAVER**

- Titanium Barrels
- Quickly creates waves in any type of hair
- One-year warranty



HPK1852

**MODEL HPK1852
TITANIUM TAPERED IRON – HEATS UP TO 450°F**

- Titanium Surface – corrosion resistant • Ceramic Heater for fast heat-up • Variable heat settings
- Extra long cool tip • Separate On / Off switch • Foldaway safety stand • Heat-resistant glove (included) • 8 ft. professional swivel cord • One-year warranty

NEW!

HEAT-RESISTANT GLOVE INCLUDED!



SPRING IRONS

- Rheostat heat control dial • Fast heat-up and instant heat recovery
- Separate On / Off switch • On indicator light • Powerful spring clamp
- Extra-long cool tip and thumb grip • Foldaway safety stand • 8 ft. professional swivel cord
- Titanium is corrosion resistant to styling products • One-year warranty

Bonus: Includes 2 extra easy-to-replace springs

MODEL HPK43
3/4" SALON SPRING IRON

MODEL HPK44
1" SALON SPRING IRON

MODEL HPK45
1 1/4" SALON SPRING IRON

MODEL HPK46
1 1/2" SALON SPRING IRON

HOT TOOLS®
ARE A CURL'S BEST FRIEND

HIGH HEATS UP TO **450°**

PULSE
Technology
For Gets Hot...
Stays Hot®
Performance

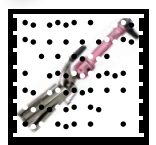
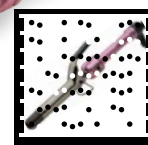


HPK43

HPK44

HPK45

HPK46



VISIT OUR WEBSITE FOR "HOW TO" USE THESE APPLIANCES
www.HotTools.com

HOT TOOLS
BLUE ICE Ti

MODEL HTBL01
IONIC® SALON DRYER

- Quiet, energy-efficient without compromising heat or airflow
- Multiple heat / speed combinations • Cool shot • Includes concentrator, straightening pik, and finger diffuser • 8 ft. professional cord • One-year warranty

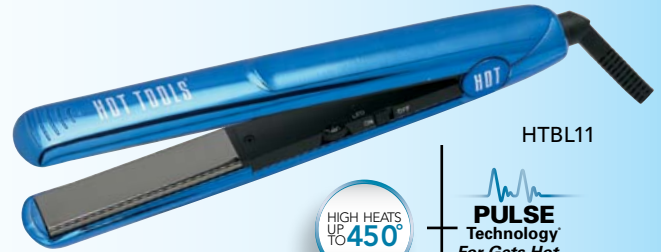


HTBL01

DRIES HAIR UP TO **40% FASTER** THAN NON-IONIC DRYERS

MODEL HTBL11
1" FLAT IRON – TITANIUM PLATES
HEATS UP TO 450°F

- Ceramic heater for fast heat-up and recovery • Smooth surface for snag-free styling
- Movable plates for better hair contact • Rheostat heat control dial
- Separate On / Off switch • Titanium plates are corrosion resistant to styling products
- Rounded plate edges • 8 ft. professional swivel cord • One-year warranty



HTBL11

HIGH HEATS UP TO **450°**

PULSE Technology
For Gets Hot...
Stays Hot®
Performance

HOT TOOLS
ARE A CURL'S BEST FRIEND

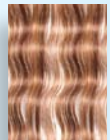
PULSE Technology
For Gets Hot...
Stays Hot®
Performance

MODEL HTBL1175
THREE BARREL WAVER - TITANIUM BARRELS

- Rheostat heat control dial • Fast heat-up and instant heat recovery • Quickly creates waves in any type of hair • Separate On / Off switch • On indicator light • Powerful spring clamp, thumb grip • Foldaway safety stand • Titanium is corrosion resistant to styling products
- 8 ft. professional swivel cord • One-year warranty



HTBL1175



VISIT OUR WEBSITE FOR "HOW TO" USE THESE APPLIANCES

www.HotTools.com



Curly-Q™

TAPERED IRON

HOT TOOLS
BLUE ICE Ti

stylist ✂
preferred

BLUE ICE TAPERED IRONS FEATURE:

- Titanium Surface – corrosion resistant
- Ceramic Heater for fast heat-up
- Variable heat settings
- Extra long cool tip
- Separate On / Off switch
- Foldaway safety stand
- Heat-resistant glove (included)
- 8 ft. professional swivel cord
- One-year warranty

TAPERED IRONS AVAILABLE IN 2 SIZES:

HTBL1851 – Medium (Medio) ½" – 1"

HTBL1852 – Large (Grande) ¾" – 1¼"



HEAT-RESISTANT GLOVE
INCLUDED!


PULSE
Technology
*For Gets Hot...
Stays Hot®
Performance*



HIGH HEATS
UP
TO **450°**



HTBL1852 (Large)

HTBL1851 (Medium)

HOT TOOLS®

ARE A CURL'S BEST FRIEND





STYLISH, ELEGANT DESIGN

MODEL HTBW03
TITAN 2100 TURBO IONIC® – AC MOTOR

- Energy efficient without compromising heat or airflow
- Multiple heat / speed combinations • Cool shot • AC motor
- Includes concentrator and finger diffuser • 8 ft. professional cord • One-year warranty

MODEL HTBW04
TEMPEST 2000 TURBO IONIC®

- Energy efficient without compromising heat or airflow
- Multiple heat / speed combinations • Cool shot • Includes concentrator, straightening pick and finger diffuser • 8 ft. professional cord • One-year warranty

MODEL HTBW01
IONIC® SALON LIGHTWEIGHT DRYER

- Energy efficient without compromising heat or airflow
- Cool shot • Multiple heat / speed options • Powerful & quiet • Low EMF's
- Includes concentrator and finger diffuser • 8 ft. professional cord • One-year warranty

MODEL HTBW02
IONIC® SALON DRYER – 1875 WATT

- 1875 watts • Multiple heat / speed combinations • Cool shot
- Includes concentrator and finger diffuser • 8 ft. professional cord
- One-year warranty

MODEL HTBW11
1" NANO CERAMIC® FLAT IRON – HEATS UP TO 430°F

- Nano Ceramic® ultra-smooth plate surface • Ceramic heater for fast heat-up and recovery
- Moveable plates for better hair contact • Rheostat heat control dial • Separate On / Off switch
- Rounded plate edges • 8 ft. professional swivel cord • One-year warranty

MODEL HTBW14
1" NANO CERAMIC® FLAT IRON – HEATS UP TO 450°F

- Korean designed and engineered • Nano Ceramic® ultra-smooth plate surface
- Ceramic heater for fast heat-up and recovery • Moveable plates for better hair contact
- Rheostat heat control dial • Rounded plate edges • Separate On / Off switch
- 8 ft. professional swivel cord • One-year warranty

HOT TOOLS®
ARE A CURL'S BEST FRIEND



SPRING IRONS

- Rheostat heat control dial • Fast heat-up and instant heat recovery
- Separate On / Off switch • On indicator light • Powerful spring clamp • Extra-long cool tip and thumb grip • Foldaway safety stand • 8 ft. professional swivel cord • One-year warranty

Bonus: Includes 2 extra easy-to-replace springs

MODEL HTBW43
¾" SALON SPRING IRON

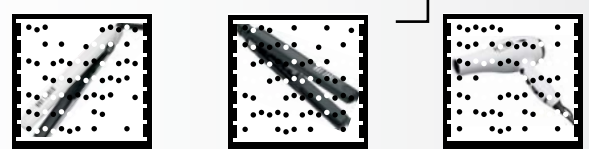
MODEL HTBW44
1" SALON SPRING IRON

MODEL HTBW45
1¼" SALON SPRING IRON

MODEL HTBW46
1½" SALON SPRING IRON



PULSE
Technology
For Gets Hot...
Stays Hot®
Performance



Curly-Q™

TAPERED IRON

HOT TOOLS®

NANOCERAMIC®

stylist ✂
preferred

NANO CERAMIC® TAPERED IRONS FEATURE:

- Nano Ceramic® surface
- Ceramic heater for fast heat-up
- Variable heat settings
- Extra long cool tip
- Separate On / Off switch
- Foldaway safety stand
- Heat-resistant glove (included)
- 8 ft. professional swivel cord
- One-year warranty

TAPERED IRONS AVAILABLE IN 3 SIZES:

HTBW1850 – Small (Petite) ¾" – ¾"

HTBW1851 – Medium (Medio) ½" – 1"

HTBW1852 – Large (Grande) ¾" – 1¼"



HEAT-RESISTANT GLOVE INCLUDED!


PULSE
Technology®
*For Gets Hot...
Stays Hot®
Performance*



HIGH HEATS
UP
TO **450°**



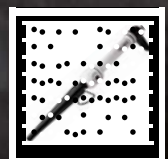
HTBW1852 (Large)

HTBW1851 (Medium)

HTBW1850 (Small)

HOT TOOLS®

ARE A CURL'S BEST FRIEND



GALAXY

by HOT TOOLS

NEW!

MODEL HT7002 TURBO IONIC® SALON DRYER

- Direct ION TECHNOLOGY® for frizz-free styles
- Powerful and quiet
- Multiple heat/speed settings
- Cool shot
- Ergonomic handle
- Removable lint filter
- Includes, finger diffuser, concentrator
- 8 ft. professional cord
- One-year warranty

Ergonomic Orbiting Handle to adjust airflow direction without wrist strain



HT7002

Orbiting Handle

Reduces Drying Time Up To **50%**

Direct ION TECHNOLOGY® for frizz-free styles

Bella 2000

Salon Turbo Ionic Dryer

MODEL HT2000R (MATTE) SALON TURBO IONIC® DRYER

- Direct ION TECHNOLOGY® for frizz-free styles • High-performance AC Motor • Powerful and quiet • Multiple heat/speed settings • Cool shot
- Ergonomic handle • Removable lint filter • Includes, finger diffuser, concentrator, and pik • 8 ft. professional cord • One-year warranty



HT2000R

Powerful Long-life AC Motor

Reduces Drying Time up to **50%**

Direct ION TECHNOLOGY® for frizz-free styles

Whisper Quiet™

Salon Turbo Ionic Dryer

MODEL HT7000Q SALON IONIC® DRYER

- Direct ION TECHNOLOGY® for frizz-free styles • Whisper-quiet, powerful, long-life hybrid motor • Side-mounted turbine fan for excellent airflow and faster drying power • Multiple heat/speed settings • Locking On / Off Cool Shot button with "on" indicator light • Includes finger diffuser, and convertible 2-in-1 concentrator/pik • 8 ft. professional cord
- One-year warranty



HT7000Q

Ergonomic Handle for Styling Comfort

Reduces Drying Time Up To **50%**

Locking Cool Shot with Indicator Light

Turbo Set 7™

Salon Ionic Dryer

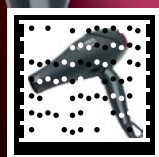
MODEL HT7001 SALON IONIC® DRYER

- Direct ION TECHNOLOGY® for frizz-free styles • Quiet operation with excellent drying power • Ergonomic, well-balanced "7" shaped handle for styling comfort
- Multiple heat/speed settings • Locking On / Off Cool Shot button with "on" indicator light • Lint alert indicator, lights up when cleaning is needed • Includes finger diffuser, and convertible 2-in-1 concentrator/pik • 8 ft. professional cord
- One-year warranty



HT7001

convertible 2-in-1 pik/concentrator



Tourmaline Tools 2000

Turbo Ionic® Dryer

stylist preferred

**NEW LOOK!
SAME GREAT
PERFORMANCE**

MODEL 1043

- Tourmaline-infused airflow
- Direct ION TECHNOLOGY®
- Soft-Grip™ textured finish
- Removable lint filter for easy cleaning, longer motor life
- 8 speed / heat options
- Cool shot for setting the style
- Attachments
 - ◊ Finger diffuser
 - ◊ Concentrator
 - ◊ Pik
- Narrow 1 3/4" European nozzle
- 8 ft. professional cord
- One-year warranty



THE DREAM DRYER...LIGHTWEIGHT AND QUIET WITH EXCELLENT HEAT AND AIRFLOW. LEAVES HAIR SILKY, SMOOTH, SHINY, BEAUTIFUL!



1043

Quiet Dryer

Reduces Drying Time Up To **50%**

Direct ION TECHNOLOGY for frizz-free styles



HOT TOOLS
PROFESSIONAL

Flat Irons

Titanium Plates

NEW!

stylist preferred

TITANIUM FLAT IRONS

- Rheostat temperature control dial
- Rounded plate edges to curl ends under or flip them out
- Movable styling plates for better hair contact
- 1" plates perfect for styles of every length
- Ultra-slim, easy-to-hold design
- Separate On/Off switch
- 8 ft. professional swivel cord
- One-year warranty

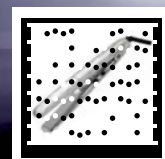


HTP10



HTP11

BEAUTIFUL HOLOGRAPHIC FINISH!



PULSE
Technology

HOT TOOLS
TITANIUM Ti



VIBRASMOOTH

1" VIBRATING FLAT IRON – HEATS UP TO 450°F

- Vibration helps plates glide through hair for sleek, shiny, results
- Nano Ceramic® ultra-smooth plate surface • LCD digital temperature readout • Moveable plates for better hair contact • Digital heat control buttons • Rounded plate edges • Separate On / Off switch
- 8 ft. professional swivel cord • One-year warranty



KERATIN

1" KERATIN FLAT IRON – HEATS UP TO 450°F

- Korean designed and engineered • Nano Ceramic® ultra-smooth plate surface • Ceramic heater for fast heat-up and recovery
- Moveable plates for better hair contact • Rheostat heat control dial
- Rounded plate edges • Separate On / Off switch • 8 ft. professional swivel cord • One-year warranty



INFRARED

1" INFRARED FLAT IRON – HEATS UP TO 450°F

- Infrared LED maintains moisture balance and controls bacteria and odor • Nano Ceramic® ultra-smooth plate surface • LCD digital temperature readout • Moveable plates for better hair contact
- Digital heat control buttons • Rounded plate edges • Separate On / Off switch • 8 ft. professional swivel cord • 2-hour auto shut off
- One-year warranty



SILICONE CERAMIC

1" SILICONE FLAT IRON – HEATS UP TO 450°F

- Silicone strips provide cushioned pressure to straighten hair for silky, shiny results • Nano Ceramic® ultra-smooth plate surface • LCD digital temperature readout • Moveable plates for better hair contact
- Digital heat control buttons • Rounded plate edges • Separate On / Off switch • 8 ft. professional swivel cord • 2-hour auto shut off
- One-year warranty



CONDITIONSHINE

1¼" CONDITIONING FLAT IRON – HEATS UP TO 450°F

- Conditioning steam disperses evenly, adds shine and smooths the hair for sleek, straight hairstyles • Nano Ceramic® ultra-smooth plate surface • Moveable plates for better hair contact • Rheostat heat control dial • Rounded plate edges • Separate On / Off switch
- 2-hour auto shut off • 8 ft. professional swivel cord
- One-year warranty





Ti is the symbol for titanium

CERAMIC^{TI} TOURMALINE FLAT IRONS FEATURE: HIGH HEATS UP TO 430°F

- Advanced Ceramic, Tourmaline, and Titanium styling surfaces
- Moveable Flexi-Plates™ eliminate gaps and stay in full contact with hair
- Pulse Technology® for Gets Hot...Stays Hot® Performance

- Variable heat settings
- Separate heating systems for each plate
- Extra-high heat for hard-to-straighten hair
- Fast heat-up
- Rounded plate edges to curl ends under or flip them out
- Separate On / Off switch
- 8 ft. professional swivel cord
- One-year warranty

**MODEL 1188
1" CERAMIC^{TI} TOURMALINE FLAT IRON**

- Perfect for any hair length
- One-year warranty

**MODEL 1199
1½" CERAMIC^{TI} TOURMALINE FLAT IRON**

- Ergonomic european design for better results
- Ideal for styles of any length
- One-year warranty

**MODEL 1189
2" CERAMIC^{TI} TOURMALINE FLAT IRON**

- Perfect for any hair length
- One-year warranty



PULSE Technology
For Gets Hot... Stays Hot® Performance

**MODEL 2179
DEEP WAVER WITH CERAMIC^{TI} TOURMALINE**

- New plate design creates ultra-deep waves in any type of hair
- Variable heat settings • Locking switch convenient for travel
- Cool Tips • One-year warranty

NEW!

**MODEL 2180
3-IN-1 CERAMIC^{TI} TOURMALINE STYLING IRON – HEATS UP TO 430°F**

- 3-in-1 Waver with reversible and removable wave-plate for three different styling irons and styling flexibility. For a different unique curl each use • Variable heat settings with built-in rheostat control • Fast heat-up • Soft-Grip™ handle for a more comfortable, secure grip • Separate On / Off switch • Foldaway safety stand • 8 ft. professional swivel cord • One-year warranty



1188



1199



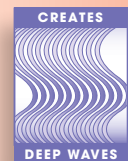
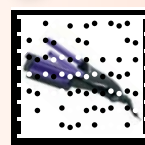
1189



2179



2180



SPRING IRONS

BONUS! Includes two extra easy-to-replace springs

Powerful spring clamp and extra-long cool tip & thumb grip.

One-year warranty

MODEL 2101
¾" CURLING IRON

MODEL 2181
1" CURLING IRON

MODEL 2110
1¼" CURLING IRON

MODEL 2102
1½" CURLING IRON

MODEL 2111
2" CURLING IRON



PULSE
Technology[®]
*For Gets Hot...
Stays Hot[®]
Performance*



MARCEL IRONS

With locking / rotating Marcel handles

TouchGuard™ protector for easier handling close to neck and face.

One-year warranty

MODEL 2105
¾" MARCEL IRON

MODEL 2108
1" MARCEL IRON

MODEL 2182
1½" MARCEL IRON



HOT TOOLS
ARE A CURL'S BEST FRIEND

CERAMIC[™] TOURMALINE CURLING IRONS FEATURE:

HIGH HEATS UP TO 430°F

- Advanced Ceramic, Tourmaline, and Titanium barrel
- Pulse Technology[®] for Gets Hot... Stays Hot[®] performance
- Variable heat settings with built-in rheostat control
- Fast heat-up
- Soft-Grip[™] handle for a more comfortable, secure grip

- Foldaway safety stand
- "On" indicator light
- Separate On / Off switch
- 8 ft. professional swivel cord
- One-year warranty





HOT TOOLS GOLD CURLING IRONS ARE STYLIST CHOICE AWARD WINNERS!

**GOLD CURLING IRON FEATURES:
HIGH HEATS UP TO 430°F**

- Pulse Technology® for Gets Hot... Stays Hot® performance
- Variable heat settings with built-in rheostat control
- Fast heat-up
- Soft-Grip™ handle for a more comfortable, secure grip

- 24K gold-plated barrel
- Separate On / Off switch
- Foldaway safety stand
- "On" indicator light
- 8 ft. professional swivel cord
- One-year warranty



SPRING IRONS

BONUS! Includes two extra easy-to-replace springs
Powerful spring, clamp and extra-long cool tip & thumb grip.

MODEL 1138
3/8" PROFESSIONAL SPRING IRON

MODEL 1103
1/2" PROFESSIONAL SPRING IRON

MODEL 1109
5/8" PROFESSIONAL SPRING IRON

MODEL 1101
3/4" PROFESSIONAL SPRING IRON

MODEL 1181
1" PROFESSIONAL SPRING IRON

MODEL 1110
1 1/4" PROFESSIONAL SPRING IRON

MODEL 1102
1 1/2" PROFESSIONAL SPRING IRON

MODEL 1111
2" PROFESSIONAL SPRING IRON



PULSE Technology®
For Gets Hot... Stays Hot® Performance



HOT TOOLS®
ARE A CURL'S BEST FRIEND



MARCEL IRONS

With locking / rotating Marcel handles
TouchGuard™ protector for easier handling close to neck and face.

MODEL 1106
3/8" PROFESSIONAL MARCEL IRON

MODEL 1107
1/2" PROFESSIONAL MARCEL IRON

MODEL 1104
5/8" PROFESSIONAL MARCEL IRON

MODEL 1105
3/4" PROFESSIONAL MARCEL IRON

MODEL 1108
1" PROFESSIONAL MARCEL IRON

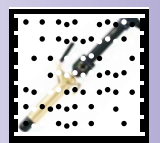
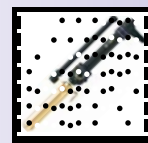
MODEL 1130
1 1/4" PROFESSIONAL MARCEL IRON

MODEL 1182
1 1/2" PROFESSIONAL MARCEL IRON



PULSE Technology®
For Gets Hot... Stays Hot® Performance

stylist preferred



Curly-Q™

TAPERED IRON

GOLD
AT THE
END OF THE
RAINBOW

HOT TOOLS®
PROFESSIONAL

stylist
preferred

GOLD TAPERED IRONS FEATURE:

- Gold Surface
- Ceramic Heater for fast heat-up
- Variable heat settings
- Extra long cool tip
- Separate On / Off switch
- Foldaway safety stand
- Heat-resistant glove (included)
- 8 ft. professional swivel cord
- One-year warranty

TAPERED IRONS AVAILABLE IN 3 SIZES:

HTG1850 – Small (Petite) 3/8" – 3/4"

HTG1851 – Medium (Medio) 1/2" – 1"

HTG1852 – Large (Grande) 3/4" – 1 1/4"



HEAT-RESISTANT GLOVE
INCLUDED!



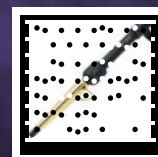
HIGH HEATS
UP
TO **450°**

PULSE
Technology®
For Gets Hot...
Stays Hot®
Performance



HOT TOOLS®

ARE A CURL'S BEST FRIEND





HIGH-PERFORMANCE FLAT IRONS FEATURE:

HIGH HEATS UP TO 430°F

- Pulse Technology® for Gets Hot...Stays Hot® performance
- Variable heat settings for any hair type
- Extra-high heat

- Fast heat-up
- On / Off switch with "On" indicator light
- Separate heating system for each heating plate
- 8 ft. professional cord
- One-year warranty

**MODEL 1171
1" PROFESSIONAL FLAT IRON**

- Rounded plate edges to curl ends under or flip them out
- Moveable plates maintain full contact with hair for optimum results

**MODEL 1190
2" PROFESSIONAL FLAT IRON**

- Creates a smooth, silky appearance
- Moveable plates maintain full contact with hair for optimum results



HIGH HEATS UP TO 430°



1141

1150

**MODEL 1141
REGULAR ¾" PROFESSIONAL BRUSH IRON**

- Soft-Grip™ textured handle • For loose, natural-looking curls
- Extra set of replacement bristles • One-year warranty

Extra set of replacement bristles!

**MODEL 1150
PROFESSIONAL HOT PRESSING COMB**

- Designed specifically for ethnic and coarse hair
- Temperatures up to 430°F (220°C) • 24K gold plated
- Soft-Grip™ textured handle • Includes heavy-duty safety stand
- One-year warranty



1191

**MODEL 1191
2" CRIMPER**

- Creates light, textured crimps and added volume
- Spring loaded handle for easy use
- Locking ring for convenient storage
- One-year warranty



1174CR

**MODEL 1174CR
1" CRIMPER**

NEW!

- Creates light, textured crimps and added volume • Temperatures up to 430°F
- One-year warranty



HTG1855

**MODEL HTG1855
2 BARREL SALON CURLER**

NEW!

- Create your own unique curls • High, even heat for longer-lasting styles
- Produces perfect heat for beautiful, long-lasting, durable curls • One-year warranty

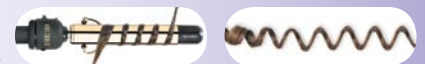


HTG1860

**MODEL HTG1860
1" GOLD FLIPPERLESS WAND**

NEW!

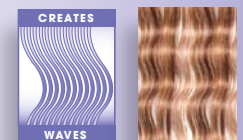
- Creates looped curls • High, even heat for longer-lasting styles • Smooth surface for frizz-free styling • Produces perfect heat for beautiful, long-lasting, durable curls
- One-year warranty



1175

**MODEL 1175
PROFESSIONAL 3-BARREL WAVER**

- Quickly creates luxurious waves in any type of hair
- Soft-Grip™ textured handle • Rheostat heat control dial
- Separate On / Off switch • 24K gold-plated barrel
- Folding safety stand • One-year warranty



HIGH-PERFORMANCE SPECIALTY IRONS FEATURE:

- Pulse Technology® for Gets Hot... Stays Hot® Performance
- Variable heat settings for any hair type
- Fast heat-up
- Separate heating system for each heating plate (crimper)
- On / Off switch with "On" indicator light
- 8 ft. professional swivel cord
- One-year warranty



Aluminum barrel for superior heat retention. Rotating barrel releases tangle-free curls.



1073

MODEL 1073
1½" THERMAL HOT AIR BRUSH WITH ROTATING BARREL – 800 WATT

- 800 watts for fast curling, styling • Styles and dries hair simultaneously
- Tangle-free rotating barrel • Curl release button • Textured, Soft-Grip™ handle
- Nylon bristles hold hair to barrel for better styling results
- High / Low heat settings • Low EMF's • One-year warranty



1074

MODEL 1074
1½" IONIC® HOT AIR BRUSH – 1000 WATT

- 1000 watts • Ion On / Off switch • 1½" barrel for full curls and waves
- Nylon bristles hold hair to barrel for better styling results
- High / Low heat settings • Soft-Grip™ rubberized housing
- Cool shot for setting the style • Low EMFs • One-year warranty

AN IONIC® DRYER AND THERMAL BRUSH-IN-ONE

Includes concentrator attachment



1079

MODEL 1079
1¼" HOT AIR BRUSH WITH RETRACTABLE BRISTLES – ION & CERAMIC® TECHNOLOGY

- ION & CERAMIC® TECHNOLOGY • 1000 watts – powerful outflow and fast drying
- Brush bristles retract into barrel to release curl without tangling • Ball-tipped bristles gently grip hair • High / Low heat settings • Detachable barrel for convenient storage
- Cool shot to set the style • Ion On / Off switch • One-year warranty

Brush bristles retract into barrel to release curl without tangling



MODEL 1023
IONIC® SALON DRYER

- 1875 watts • 6 speed / heat options • Cool shot for setting the style
- Includes concentrator and pik • Comfortable, rubberized handle
- Hanging ring / cord guard • 8 ft. professional cord • One-year warranty



Includes pik and concentrator



1023

MODEL 1023PL
IONIC® SALON DRYER

- 1875 watts • 6 speed / heat options • Cool shot for setting the style
- Includes concentrator and pik • Comfortable, rubberized handle
- Hanging ring / cord guard • 8 ft. professional cord • One-year warranty



Includes pik and concentrator



1023PL

MODEL 1035
IONIC® ANTI-STATIC 1875 WATT PROFESSIONAL DRYER

- 1875 watts • Ion On / Off switch • 8 speed / heat options • Low EMFs
- Cool shot • Includes concentrator • 8 ft. power professional cord • One-year warranty



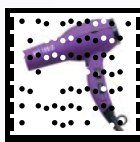
Includes concentrator



1035



For ultimate control, the ion feature may be turned on or off





MODEL HT1044
IONIC® TRAVEL DRYER

- 1875 watts • Lightweight • Folding handle ideal for travel • Multiple heat / speed options
- Cool shot for setting the style • Power indicator light • Concentrator & finger diffuser
- Hanging ring / cord guard • Low EMFs • **Dual voltage**
- 6 ft. professional cord • One-year warranty



Includes concentrator & diffuser



HT1044



GREAT FOR TRAVEL!

MODEL 1039
IONIC® ANTI-STATIC TRAVEL DRYER

- 1875 watts • Separate Ion On / Off switch • 8 speed / heat options • **Dual voltage**
- Folding handle ideal for travel • Cool shot • Includes concentrator • Low EMFs
- Hanging ring / cord guard • 6 ft. professional cord • One-year warranty



Includes concentrator



Folding handle ideal for travel

Folding handle ideal for travel



For ultimate control, the ion feature may be turned on or off



1039



For ultimate control, the ion feature may be turned on or off



1034

MODEL 1034
IONIC® SALON DRYER

- 1875 watts • Multiple speed / heat options • Separate Ion On / Off switch • Cool shot
- Hinged end cap • Includes concentrator, pik and speed diffuser • Low EMFs
- Hanging ring / cord guard • 8 ft. professional cord • One-year warranty



Includes pik and concentrator



SPEED DIFFUSER swirling airflow for fast, gentle drying



1038

MODEL 1038
IONIC® SALON DRYER

- 1875 watts • 8 speed / heat options • Low EMFs • Separate switches for maximum control
- Cool shot • Hanging ring / cord guard • 8 ft. professional cord • One-year warranty



Includes pik and concentrator



1069S

**MODEL 1069S
SILVER PROFESSIONAL DRYER**

- Energy efficient without compromising heat or airflow • Multiple speed / heat options
- Ultra-lightweight, only 13 ounces • Specifically designed to meet stylists' demand for lightweight, quiet dryers with high heat and airflow • Soft-Grip™ rubberized grip
- Cool shot for setting the style • Pik and concentrator • Hanging ring / cord guard
- Low EMFs • 8 ft. professional cord • One-year warranty



1089

**MODEL 1089
PROFESSIONAL DRYER**

- 1875 watts • Hi / low speed / heat options • Cool shot for setting the style
- Concentrator and pik • **Dual voltage** • Hanging ring / cord guard
- Low EMFs • 8 ft. professional cord • One-year warranty



1099

**MODEL 1099
STYLER / DRYER
WITH 3 STYLING ATTACHMENTS**

- 1875 watts with high airflow and maximum heat for faster drying
- 3 styling attachments: * Styling brush * Wide detangling comb * Fine finishing comb
- **Dual voltage** • Multiple speed / heat options • Cool shot for setting the style
- Hanging ring / cord guard • Low EMFs • 8 ft. professional cord
- One-year warranty





NEW!

Includes concentrator, pik and diffuser



TURBO IONIC® SALON DRYER
1875 WATTS POWERFUL AIRFLOW

- Newly designed and engineered motor for quiet operation • Multiple speed / heat options
- Removable lint filter • Concentrator, pik and finger diffuser • Extremely lightweight only 14.28 oz.
- 8 ft. professional cord • One-year warranty



HT5008

HT5108

CRIMSON FADE

1" DIGITAL SALON TITANIUM FLAT IRON

- Digital Temperature control switches — heats up to 430°F • Titanium provides even heat distribution and durability under extreme temperatures and is corrosion resistant to styling products • Pulse Technology® for Gets Hot...Stays Hot® performance
- Separate On / Off switch • Movable styling plates for better hair contact
- Cool tips for easy handling • 8 ft. professional swivel cord • One-year warranty

NEW!

DRYERS

Includes concentrator, pik and diffuser



DRIES HAIR UP TO **50% FASTER** THAN NON-IONIC DRYERS

TURBO IONIC® SALON DRYER WITH POWER BOOST CONTROL & VARIABLE ION DIAL

- Newly designed and engineered motor for quiet operation • 1875 watts • Variable ion dial adjust ion output • Power boost for increased airflow • Multiple speed / heat options • Removable lint filter • Concentrator, pik and finger diffuser • Extremely lightweight only 14.4 oz.
- 8 ft. professional cord • One-year warranty



HT5005R

HT5105R

CARIBBEAN CHEETAH

NEW!

FLAT IRONS



1" FLAT IRONS WITH NANO CERAMIC® PLATES AND CERAMIC HEATER

- Rheostat control dial – heats up to 430°F • Ceramic heater for fast heat-up and instant heat recovery • Pulse Technology® for Gets Hot...Stays Hot® performance • Separate On / Off switch
- Movable styling plates for better hair contact • Cool tips for easy handling • 8 ft. professional swivel cord • One-year warranty

HIGH HEATS UP TO **430°**

PULSE Technology
For Gets Hot... Stays Hot® Performance



HT5006S

HT5106S

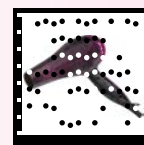
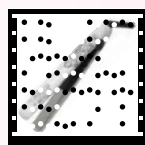
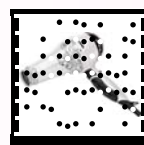
FILIGREE SCROLL



HT5007V

HT5107V

PINK VINTAGE



DRYERS

Includes concentrator, pik and diffuser



DRIES HAIR UP TO **50% FASTER** THAN NON-IONIC DRYERS

TURBO IONIC[®] SALON DRYER WITH POWER BOOST CONTROL & VARIABLE ION DIAL

- Newly designed and engineered motor for quiet operation • 1875 watts • Variable ion dial adjust ion output • Power boost for increased airflow • Multiple speed / heat options
- Removable lint filter • Concentrator, pik and finger diffuser • Extremely lightweight only 14.4 oz. • 8 ft. professional cord • One-year warranty



HT5003B

HT5103B

TINY BUBBLES

FLAT IRONS

1" FLAT IRONS WITH NANO CERAMIC[®] PLATES AND CERAMIC HEATER

- Rheostat control dial – heats up to 430°F • Ceramic heater for fast heat-up and instant heat recovery • Pulse Technology[®] for Gets Hot...Stays Hot[®] performance • Separate On / Off switch
- Movable styling plates for better hair contact • Cool tips for easy handling
- 8 ft. professional swivel cord • One-year warranty

HIGH HEATS UP TO **430°**

PULSE Technology
For Gets Hot...
Stays Hot[®]
Performance



HT5004L

HT5104L

CHANTILLY LACE



HT5000ZB

HT5100ZB

SAFARI ZEBRA



HT5001CH

HT5101CH

CHEETAH





HTS1400

**MODEL HTS1400
12-PIECE HAIRSETTER WITH TOURMALINE**

- Fast heat-up
- 12 extra-large 1½" flocked rollers
- Flocked rollers cushion and grip hair
- 12 easy-to-use butterfly clips hold rollers securely in place
- Convenient zippered claw clip storage pouch
- Recessed area on hairsetter for butterfly clip set-up and easy access
- Cool-Touch® ribbed roller ends make handling easy
- See-through lift-off lid
- On / Off switch with "On" indicator light
- 6 ft. professional cord wraps around base for easy storage
- One-year warranty



Rollers with tourmaline emit ions for shimmering styles

Flocked roller surface grips hair softly, firmly



Unique light-up end panels

**MODEL HTS1401
20-PIECE HAIRSETTER WITH WAX CORE AND IONIC® TECHNOLOGY**

- 20 velvet flocked rollers in 3 sizes
 - * 6 small ¾" rollers
 - * 8 medium 1" rollers
 - * 6 large 1¼" rollers
- Velvet-flocked roller surface – easy to roll up and firmly grips hair
- Cool Touch® roller ends for handling ease
- See-through lid slides open effortlessly, closes securely for storage/travel
- On / Off switch with "On" indicator light
- 20 easy-to-use butterfly clips hold rollers securely in place
- Butterfly clip zippered storage pouch
- 6 ft. professional cord
- One-year warranty

IONIC TECHNOLOGY® – emits ions to create soft, shiny, beautiful hair



Wax-Core Roller Technology releases heat slowly, evenly – helps maintain roller heat

HTS1401



HTS1403

**MODEL HTS1403
20-PIECE HAIRSETTER WITH TOURMALINE**

- Rollers emit Tourmaline when heated and this helps smooth and seal the hair cuticle while forming beautiful long-lasting curls.
- Fast heat-up – Ready to use in minutes
- Heat conductive clips to set the style faster
- Flocked roller surface – easy to roll up and firmly grips hair
- See-through lid closes for convenient storage / travel
- On / Off switch
- Unique light-up front panel shows "READY" light when rollers are ready to use
- 6 ft. cord with storage compartment
- One-year warranty



Heat conductive clips and rollers



1321



MODEL 1321
20-PIECE HAIRSETTER

20 contoured, ribbed rollers with comfortable Cool Touch® ends in 3 sizes
Style any hair length into smooth, beautiful curls

- 20 contoured rollers
 - * 4 small ¾" rollers
 - * 10 medium 1" rollers
 - * 6 large 1¼" rollers
- Special hair guides for tangle-free curls
- Extended posts distribute heat evenly and keep rollers hot
- Ready dot indicates when rollers are at the right temperature
- Color-coded clips with convenient built-in storage
- On / Off switch with power light
- Locking lid for convenient portability
- 6 ft. professional cord
- One-year warranty

MODEL 1305
5-PIECE HAIRSETTER WITH 1" ROLLERS

- Compact design and dual voltage
- 5 large 1" rollers
- 60-second heat-up
- Special hair guides for tangle-free curls
- Roller clips with convenient built-in storage
- Lightweight, compact design with zippered carrying case
- **Dual Voltage**
- 6 ft. professional cord wraps around base for easy storage
- One-year warranty

1305



MODEL 1357
5-PIECE TRAVEL HAIRSETTER WITH 1¾" FLOCKED ROLLERS

- Compact design and dual voltage — ideal for worldwide travel
- 5 jumbo 1¾" rollers
- Flocked rollers cushion and grip hair
- Easy-to-use flexible roller clips hold hair firmly
- Creates fuller, longer-lasting curls
- Cool Touch® roller ends
- **Dual Voltage**
- 6 ft. professional cord wraps around base for easy storage
- One-year warranty

1357

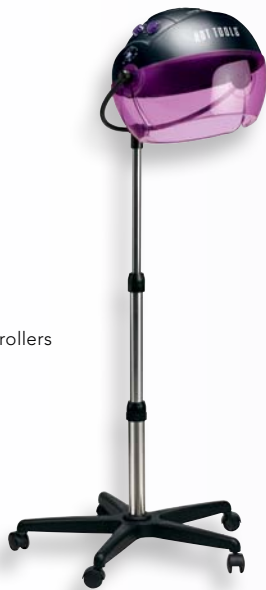




FOR SHINY, BEAUTIFUL,
HEALTHIER-LOOKING HAIR

**MODEL 1059
TOURMALINE IONIC®
PORTABLE SALON DRYER**

- Pro-Moisture System™ with Tourmaline
- Direct ION TECHNOLOGY®
- FastDry™ 1875 watts
- 2 speed / 4 heat options
- Ion On / Off switch
- Large bonnet accommodates even the largest rollers
- Adjustable front visor
- Telescoping stand adjusts height
- Adjustable bonnet angle
- Lint filter removes for cleaning
- Two lockable wheels for stability
- Legs remove from base for compact storage
- 9 ft. cord



1059

PRO-MOISTURE SYSTEM™
Tourmaline and IONIC® nano technologies
change drying's effect on hair,
transforming heat and airflow into a
moisture-enhancing spa treatment.
Creates healthy, shiny, beautiful hair.



1061

**Collapsible for compact
storage and easy transport**

**MODEL 1061
HARD HAT
SALON HAIR DRYER – 1200 WATT**

- 2-motor heating system dries fast, leaves hair softer
- 3 heat / speed options
- Large bonnet accommodates all roller sizes
- Extra-large vents for increased airflow
- Touch 'n Tilt® controls adjust bonnet to the most comfortable drying angle
- Cord storage compartment
- Carrying handle
- Low EMFs

3 HEAT / SPEED POSITIONS



1060

**Collapsible for compact
storage and easy transport**

**MODEL 1060
IONIC® HARD HAT
SALON HAIR DRYER – 1875 WATT**

- Direct ION TECHNOLOGY® with 1875-watt, 2-motor heating system
dries fast, leaves hair softer
- 3 heat / speed options
- Large bonnet accommodates all roller sizes
- Extra-large vents for increased airflow
- Touch 'n Tilt® controls adjust bonnet to the most comfortable drying angle
- Cord storage compartment
- Carrying handle
- Ion On / Off switch
- Low EMFs

3 HEAT / SPEED POSITIONS



Direct ION TECHNOLOGY®
for faster drying, increased softness
and shine, reduces frizz

1051



MODEL 1051
IONIC® SOFT BONNET DRYER

- 800 watts, the most of any soft bonnet dryer
- 225 ft./min. airflow dries hair faster
- Long, flexible hose
- 3 speed / heat settings, including cool shot, to set the style
- Recessed handle
- Comfortable, large bonnet adjusts to fit all roller sizes, circulates air for better drying results

800 WATTS! THE MOST POWERFUL SOFT BONNET AVAILABLE. DRIES FASTER.

MODEL 1128
FINGER DIFFUSER

- Self-adjusting, slide-on attachment design
- Fits most dryers with nozzle sizes up to 2" (51mm)



1128

MODEL 1125
STRAIGHTENING PIK

- Straightens as it dries
- Self-adjusting, slide-on attachment design
- Fits most dryers with nozzle sizes up to 2" (51mm)



1125

MODEL 1129
FLAT IRON CADDY **NEW!**

- Automatic power On / Off • Conveniently stores iron • Space saver • Wall mountable
- Installs easily • Easy access for stylist • Protects countertops from heated iron
- Includes two suction cups, and two screws for wall or counter mounting (does not include flat iron) • One-year warranty



1129

MODEL 1155 / 1156
CURLING IRON CLEANER

- Model 1155 – 4 oz.
- Model 1156 – 8 oz.
- For tourmaline, ceramic, or metal flat irons and curling irons
- Wipes off burnt-on, caked-on styling product to prevent build-up
- Safe, non-toxic formula



1156

1155



Check out our PR on our website
www.HotTools.com

HOT TOOLS[®]

2012

PROFESSIONAL SALON
STYLING APPLIANCES CATALOG

IF YOU SEE THIS!

Scan this tag with your smart phone to see more about Hot Tools products.



Get the free mobile app for your phone
<http://gettag.mobi>

*Supporting
the Cause*

Helen of Troy has donated money in support of breast cancer research. Please visit our web site for more information
www.hotus.com/pro/pink



Follow us on:



Twitter



Facebook



YouTube



HOW-2 VIDEO

Visit our website for how-to videos, style sheets, and tips from the pros.

www.HotTools.com

HELEN OF TROY

1 Helen of Troy Plaza, El Paso, TX 79912
T. (800) 480.8832 F. (915) 225.8005