

WARNINGS

- Econo-Heat wall panel heaters are for wall mounting only and should under no circumstances be used as free standing heaters.
- This appliance is child safe – ie. safe to touch. However, an infant or a baby should not be left unattended as prolonged contact with the surface may result in an injury.
- This appliance is not suited for use in the bathroom.
- This appliance is fitted with a two core cable only. When re-wiring the cord to a new plug, ensure that the Brown wire is connected to Live and the Blue wire is connected to Neutral. Do not connect any of the wires to Earth.
- WARNING: In order to avoid overheating, do not cover the heater with anything, including wet or dry washing. Covering the panel when switched on could result in a fire hazard.
- If the supply cord of this panel is damaged, it must be replaced by the manufacturer, its service agent or a similarly qualified person in order to avoid a hazard.
- Before drilling into a wall, check that the area is free of electric wiring embedded in the wall.
- The heater must not be located immediately below a socket-outlet.
- First time use: When switching on the heater, there may be a slight odour during the first day or two. This is quite normal and is caused by the residual moisture and does not present any health hazard.
- This appliance is not intended for use by persons (including children) with reduced physical, sensory or mental capabilities, or lack of experience and knowledge, unless they have been given supervision or instruction concerning use of the appliance by a person responsible for their safety.
- Children should be supervised to ensure that they do not play with the appliance.
- The Econo-Heat wall panel heater is manufactured to withstand a consistent voltage supply between 220 – 250VAC. Customers in areas that frequently experience surges/spikes or erratic power supply, are advised to use a surge protector with our appliance. Our warranty does not cover damage as the result of surge or erratic power supply.



TWO YEAR WARRANTY

Econo-Heat warrants that your Econo-Heat wall panel heater is free from manufacturing defects, subject to the following conditions:

- Such warranty shall be to repair or replace the goods in the event of Econo-Heat being informed of any manufacturing defect (which shall exclude fair wear and tear) within 2 (two) years of the original purchase or, in the case of installation by an approved Econo-Heat installer, first installation of the goods ("the Warranty Period");
- Any liability on Econo-Heat hereunder shall be conditional on the goods having been stored and installed properly (in accordance with Econo-Heat's installation instructions) and, from the date of delivery:
 - Having been used and maintained in accordance with Econo-Heat's instructions and/or labelling on the goods;
 - No repairs, alterations thereon having been carried out by the Buyer or any third party.
- The warranty is in substitution for and excludes all expressed or implied (whether by law or otherwise) conditions, warranties or obligations of any kind relating to fitness for purpose or quality of workmanship, material or design, save to the extent that any law prevents such exclusion. Econo-Heat accepts no liability for any workmanship of any approved installer (as contemplated above), the approved installers being independent contractors.
- Save as expressly provided for in these Conditions of Sale, Econo-Heat shall not be liable to the Buyer (or their employees, servants or agents, contractors, or successor purchasers) for any direct, indirect, incidental or consequential damages of any nature howsoever caused (whether based in delict or contract or otherwise) pursuant to or arising in respect of the installation and/or use of goods.
- The Buyer (and any successor purchasers) hereby indemnifies Econo-Heat (its members, employees and agents) against all actions, proceedings and claims whatsoever brought against it (its members, employees or agents) by any third party pursuant to, or arising in respect of the installation and/or use of the goods.

IMPORTANT: PLEASE AFFIX YOUR PROOF OF PAYMENT/RECEIPT TO THIS LEAFLET. YOU WILL BE REQUIRED TO FURNISH THE PROOF OF PAYMENT IN THE EVENT OF A WARRANTY CLAIM.

DESIGNED AND MANUFACTURED IN SOUTH AFRICA BY ECONO-HEAT
– CREATORS OF THE ORIGINAL AND ENERGY-SAVER ECONO-HEAT ELECTRIC WALL PANEL HEATER.

THE ORIGINAL LOW COST ENERGY-SAVER HEATER

Energy efficient Economical Effective Eco-friendly

www.econo-heat.com info@econo-heat.com

TWO YEAR WARRANTY



eheater™

WALL PANEL HEATER

USER MANUAL

PLEASE READ CAREFULLY

MODEL NO. 0603 (400 WATT)
MODEL NO. 0606 (260 WATT)



THE ORIGINAL LOW COST ENERGY-SAVER HEATER

Energy efficient Economical Effective Eco-friendly

www.econo-heat.com

Your energy-saver Econo-Heat wall panel heater is a whole room heater designed as an alternative to conventional locality heaters and other forms of high output heaters that use large amounts of electricity. It operates at relatively low surface temperatures (approximately 75°C - 90°C, depending on the ambient temperature), and uses minimal electricity. There are numerous advantages to using Econo-Heat electric wall panel heaters. They are energy efficient, economical, effective, eco-friendly, save on floor space, are safer to use around children and pets, operate at the same electricity cost of just four incandescent light bulbs and can be painted to match any décor with PVA or emulsion type paint (do not use oil based paint). Econo-Heat wall panel heaters are designed to be left on for long periods of time, giving you comfortable background heat at a low cost. This is similar in concept to a central heating system – yet far less expensive.

ROOM SIZES

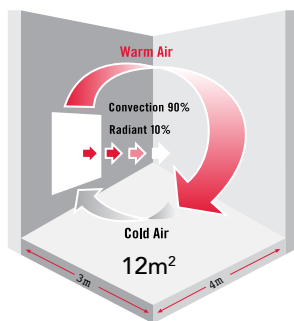
Due to variable factors, it is impossible to specify what size panel or how many to install in a room. We do however, recommend the following:

- For countries with normal winters: 1 x 400 Watt or 2 x 260 Watt per approximately 12m² of floor area.
- For countries with very cold winters: 1 x 400 Watt or 2 x 260 Watt per approximately 9m² of floor area.

Econo-Heat wall panel heaters are International Safety Standards approved and have a two year warranty provided they are used correctly.

CONVECTION TECHNOLOGY

Econo-Heat wall panel heaters provide efficient room heating at a low cost. Using natural convection technology, heat is generated behind the heater in the space between the panel and the wall, which leads to an efficient up-draught of heat circulated into the room (the heated air comes out from behind the heater at the speed of 0.7m per second!). This principle of convection means that about 90% of the heat comes from the back of the panel, while only 10% is radiated from the front of the panel. Convection heating (whole room heater) is far more effective than radiated heating (freestanding locality heater).



FEATURES AND BENEFITS

- Inexpensive to acquire, inexpensive to run.
- Energy saving - save up to 50% or more on your heating costs.
- Whole room heater as opposed to the other locality heaters.
- Efficiently warms a room of approximately 12m² (9m² in very cold climates).
- Uses efficient convection technology.
- Safer for children and pets - No exposed elements, gas or fans.
- Non-flammable. Non-combustible.
- Asbestos free; Contains no harmful chemicals or metals; Eco-friendly.
- No drying of the air. No oxygen burnt up.
- Ultra slim and compact design. Out-of-the-way wall mounting.
- Quick and easy to install with the patented Econo-Kit.
- Can be painted to suit décor.
- SABS and international safety standards approved.
- Two year guarantee.

OPTIONAL PAINTING OF THE PANEL

For painting the front of the heater, the logo plate can be easily removed and replaced by using a screwdriver. Please follow the three easy steps below:

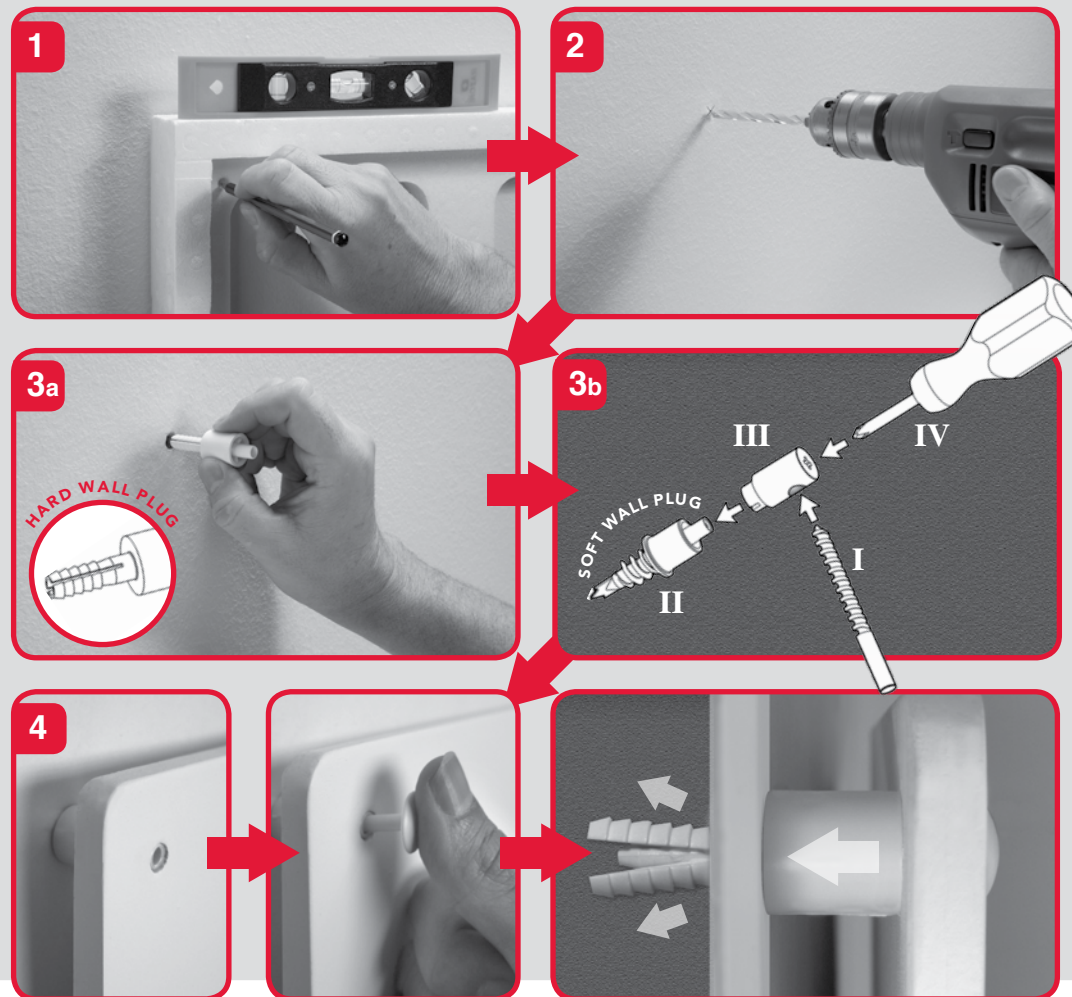
STEP A: Insert the tip of a small screwdriver into the bottom edge 'slot' of the logo plate and gently twist/pry off.

STEP B: Paint the front of the heater, while carefully avoiding the strips of adhesive tape at the bottom right-hand corner of the wall panel heater, where the logo plate attaches. Only use water-based PVA domestic paint (do not use oil-based paints). Allow the paint to dry before switching the heater on (approximately 12 – 24 hours).

STEP C: Once the paint is dry, clip the logo plate back into position on the heater by applying gentle pressure.



EASY STEP-BY-STEP INSTALLATION INSTRUCTIONS



INSTALLATION INSTRUCTIONS DRILL BIT INCLUDED

The ECONO-KIT includes – 1 x 8mm drill bit (I), 4 x hard wall spacer plugs, 4 x soft wall spacer plugs (II), 1 x drive tool (III) and 4 x mounting pins.

- 1 Use the holes provided in the lightweight polystyrene packing (400 Watt model only) OR the heater itself as a template to mark the position of the four holes on a flush wall (ensuring the template is level optionally by using a spirit level).
- 2 Drill the holes using the 8mm drill bit included. For best results, Econo-Heat wall panel heaters should be mounted approximately 15cm above the floor and away from windows and doors.
- 3 **a) HARD WALL** [such as brick or concrete] – Push the hard wall spacer plugs into the wall and position the Econo-Heat wall panel heater onto the four spacer plugs.
b) SOFT WALL [such as GIB® Plasterboard] – Screw the soft wall spacer plugs (II) into the four holes in the wall until hand-tight. Use the drive tool (III) and the supplied 8mm drill (I) bit as a lever/handle (or use a screwdriver (IV) by inserting the tip into the back of the drive tool, see diagram 3b) to screw the soft wall spacer plugs fully into the wall.
- 4 Lock the heater into position with the mounting pins (use a hammer to gently tap the mounting pins into place).