

Ref.No.IM-B099-01

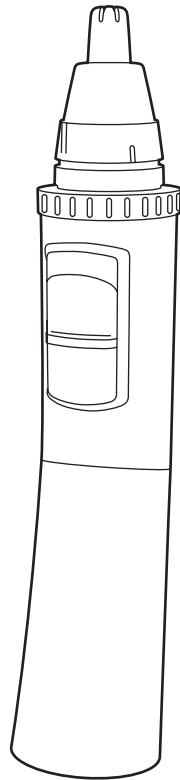
**Panasonic**<sup>®</sup>

Operating Instructions  
(Household) Nose & Facial Hair Trimmer  
Model No. ER-GN30

---

---

---



Before operating this unit, please read these instructions completely and save them for future use.



Thank you for choosing a Panasonic Nose & Facial Hair Trimmer. Please read all instructions before use.

## Safety Precautions

To ensure proper operation of this appliance, please read all the safety precautions carefully before use.

These safety precautions provide instructions in the safe operation of this appliance to help prevent personal injury, injury to others, as well as damage to property. The safety precautions are defined as follows.

### **WARNING:**


This indicates “content that may cause death or severe injury”.

### **CAUTION:**

This indicates “content that may cause injury or damage to property”.

### Safety Precautions Symbols

 A circle and slash symbolizes prohibited actions and behaviors.

 A solid circle denotes mandatory actions and instructions to be followed for safe operation.

### **WARNING**

#### **Mandatory!**

- **Keep out of the reach of toddlers and infants.**

Failure to do so may result in injury or accidental ingestion of the smaller removable parts of the appliance or the accessories.

### **CAUTION**

#### **Mandatory!**

- **Check the blade for deformation or damage before use.**  
Your skin may be injured if damage or deformation is present.
- **Always follow the cautions printed on the battery.**
- **Check the polarity of the battery (+ and -) and install it correctly.**
- **Remove the battery immediately when it is discharged.**
- **Remove the battery when not using the appliance for an extended period of time.**
- **Use the battery by the recommended use-by date.**

Failure to do so may cause overheating or explosion of the battery, injury or contamination of surroundings due to leakage.

#### **Prohibited**

- **Do not press the blade with excessive force or insert too deeply into your nostril/ear canal.**

Doing so may result in injury to your nostril/ear canal.





- **Do not subject the blade to impact, or press with excessive force on the blade.**

Your skin may be injured if damage or deformation is present.

Doing so may result in the blade becoming blunt or lead to malfunction.

- **Do not touch the blade of the inner blade (metallic part) with your finger.**

Doing so may result in injury to your finger.

- **Do not disassemble the battery or throw it into a fire. Do not short-circuit the battery.**



- **Do not dismantle!**

- **Never alter the appliance. Also, do not disassemble or repair it.**

Doing so could result in injury. Contact the store where you purchased the appliance or authorized service center for repair.

### Notes

- **Do not leave the appliance under water, in a humid place, or in a place with high temperature.**

Doing so may result in malfunction.

- **If you clean the trimmer with water, do not use salt water or hot water. Do not soak the trimmer in water for a long period of time.**

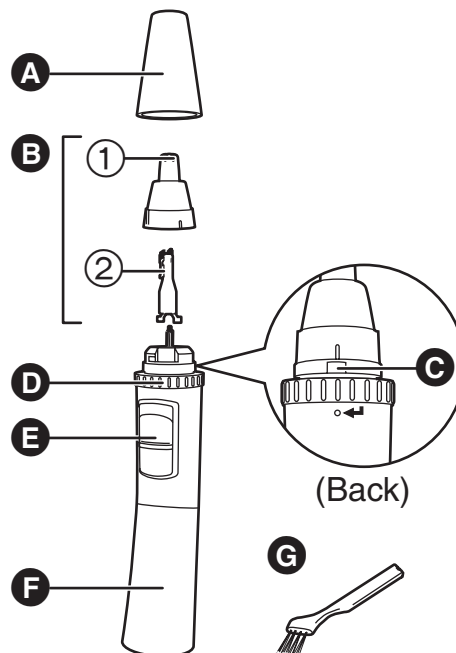
- **Clean the housing only with a soft cloth slightly dampened with tap water or soapy tap water. Do not use thinner, benzine, alcohol or other chemicals.**

- **This appliance is not intended for use by persons (including children) with reduced physical, sensory or mental capabilities, or lack of experience and knowledge, unless they have been given supervision or instruction concerning use of the appliance by a person responsible for their safety. Children should be supervised to ensure that they do not play with the appliance.**



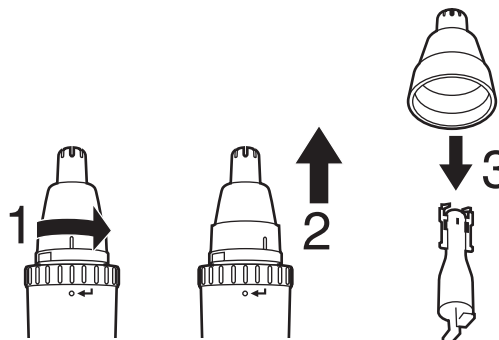
# Parts identification

- A** Protective cap
- B** Blade
  - ① Outer blade
  - ② Inner blade
- C** Water outlet
- D** Wash switch ring
- E** Power switch [0/1]
- F** Battery cover
- G** Cleaning brush



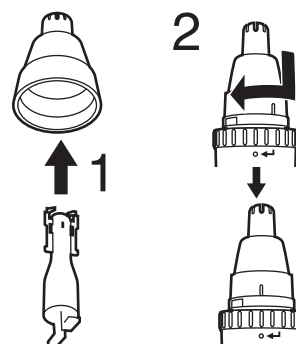
## How to remove the blade

1. Rotate the outer blade in the direction of the arrow, and align the marks.
2. Pull to remove the outer blade.
3. Separate the inner blade from the outer blade carefully.



## How to attach the blade

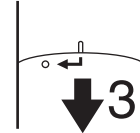
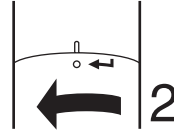
1. Slowly insert the inner blade straight along the inner surface of the outer blade.
2. Align the outer blade with the mark, and rotate it in the direction of the arrow until it clicks.



## Installing or replacing the battery

1. Make sure the power switch is in the "0" position.

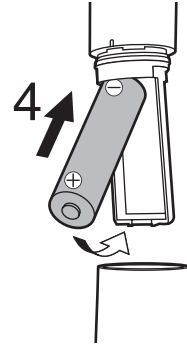
2. Rotate the battery cover in the direction of the arrow, and align the marks.



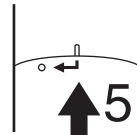
3. Pull to remove the battery cover.

4. Insert the battery.

- Be careful to insert the battery with + and - correctly oriented.



5. Align the marks and insert the main body into the battery cover.




6. Rotate the battery cover in the direction of the arrow.

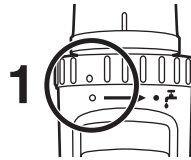
- Do not use a rechargeable battery.
- Use only AA LR6 alkaline battery.
- You can use the appliance for approximately 1 year with the Panasonic AA LR6 alkaline battery.  
(When using once a week, 90 seconds at a time (including washing operation))
- Please dispose of used battery appropriately.

## Use

### Trimming your nose hair and ear hair

**1** Check that the wash switch ring is not set to “”.

**2** Slide the power switch to the “1” position to turn the appliance on.



**3** Insert the tip of the outer blade into your nostril or ear canal.

- Insert it slowly so as not to injure your nostril or ear canal.




**4** Cut the nose hair and ear hair by moving the appliance.

- Move it slowly so as not to injure your nostril or ear canal.

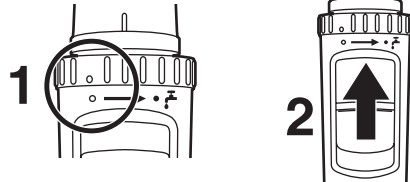
- Cut only the nostril hair around the entrance using the tip (approx. 5 mm) of the outer blade (metallic part).
- Some trimmings may remain inside your nostril or ear canal after cutting, so remove them using a tissue or similar.
- The outer blade surface may get a little warm during use, but performance will not be affected.

## Outlining your eyebrows, moustache, or beard

You cannot trim the hair to length with this appliance.  
It is not suitable for the hair below 0.5 mm.

**1** Check that the wash switch ring is not set to “”.

**2** Slide the power switch to the “1” position to turn the appliance on.



**3** Place the tip of the outer blade against the hair (eyebrows, moustache, or beard) you would like to cut.

- Press the outer blade softly so as not to injure your skin.



**4** Cut the hair by moving it slowly against the growth of the hair.

- The outer blade surface may get a little warm during use, but performance will not be affected.

# Clean

## Cleaning your trimmer

There are 3 ways to clean the appliance: “Jet wash cleaning”, “Water wash cleaning”, and “Brush cleaning”.

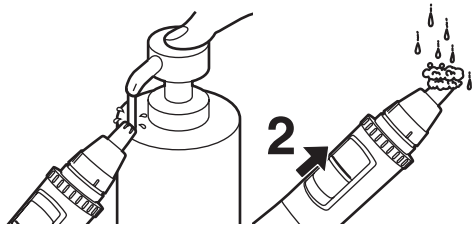
It is recommended to clean at every use.

### Water wash cleaning


#### Notes

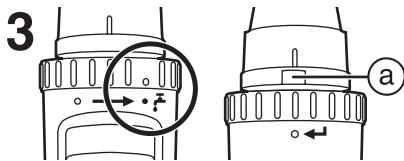
- Do not use kitchen detergents, bathroom cleaner, toilet detergents, or hot water. Doing so may result in malfunction.
- The battery cover should not be taken apart as this can affect the watertight construction of the appliance.

1. Wet the outer blade with water, and apply hand soap or cleaning fluid (optional).
2. Slide the power switch to the “1” position, and let it foam for approximately 10 seconds.



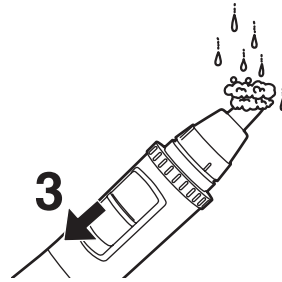
#### Jet wash cleaning

3. Align the wash switch ring to “”.
- The water outlet (a) opens.

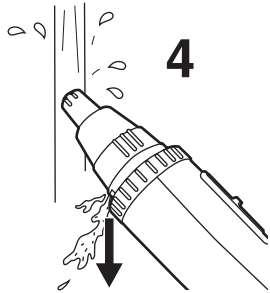


#### Water wash cleaning

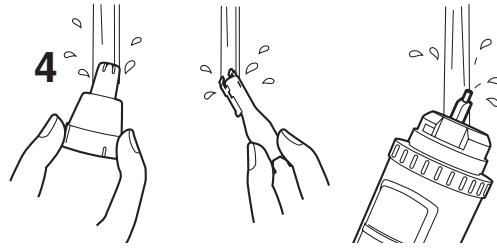
3. Slide the power switch to the “0” position and remove the blade.



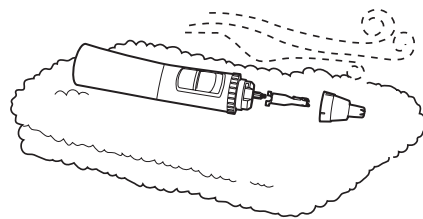
4. With the power switch still set to the “1” position, place the tip of the blade into water and rinse thoroughly.
- Water will jet out from the rear side of the appliance, so point it downward in order to not wet the surroundings.



4. Rinse under running water.

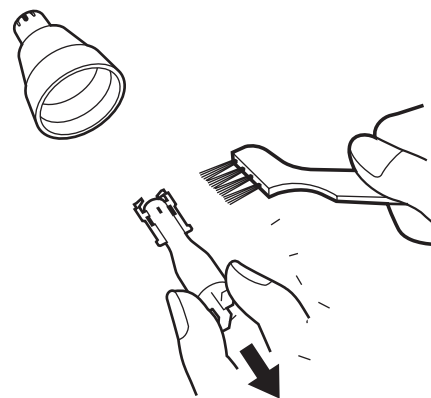


5. Wipe off the water with a towel or similar, and let it dry naturally.
- It will dry faster with the blade removed.



## Brush cleaning

1. Make sure the power switch is in the “0” position.
2. Remove the blade, and lightly brush off the trimmings on the inner blade and outer blade using the cleaning brush.
3. Attach the blade.



## Before requesting repair

Please check the following:

Problem	Possible cause	Action
The cutting performance has reduced.	▶ Deformation of the blade	▶ Replace the blade.
	▶ Wear in the blade (Guideline for blade replacement: approx. 3 years)	
	▶ The battery is discharged.	▶ Replace the battery.
There is an odd odour.	▶ The inner blade is not clean.	▶ Clean the inner blade.
Blade does not move/rotate smoothly.		

## Replacement blade

To maintain sharp cutting performance, it is recommended that the blade is replaced approximately every 3 years.

When replacing the blade, replace both the outer blade and the inner blade at the same time.

## SPECIFICATIONS

Model No.	ER-GN30
Power source	AA LR6 alkaline dry-cell battery (Sold separately)

This product is intended for household use only.

Panasonic Electric Works Wanbao (Guangzhou) Co., Ltd.  
<http://panasonic.net>

Ⓕ EN

Printed in China  
0000000000 X0000-0